



S35586

1/2

$$T1L = 155 \text{mm} \times 90 \checkmark$$

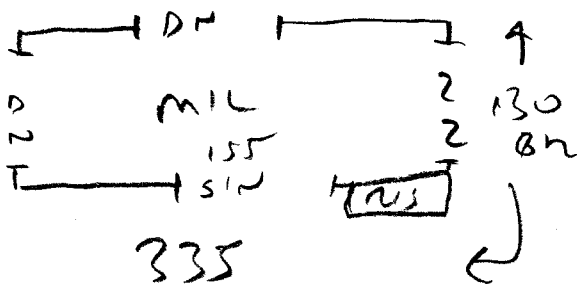
$$7 \times 5T = 45 \times 65 \checkmark$$

$$W1 = 57 \times 71 \checkmark$$

$$W2 = 64 \times 90 \checkmark$$

$$W3 = 60 \times 63 \checkmark$$

$$BIN = 55 \times 105 \checkmark$$



$$W4 = 63 \times 81 \checkmark$$

$$W5 = 64 \times 78 \checkmark$$

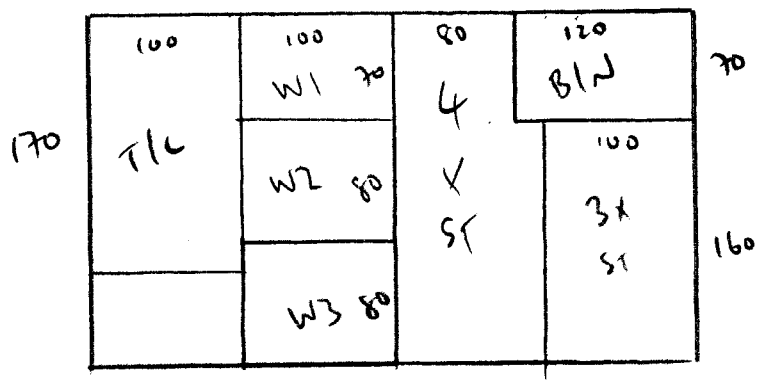
$$W6 = 65 \times 62 \checkmark$$

$$9 \times 5T = 45 \times 70 \checkmark$$

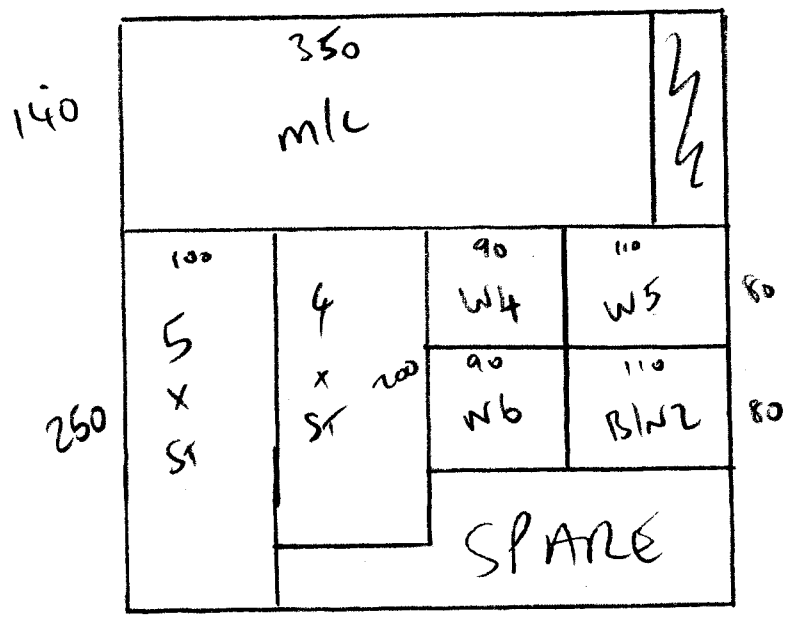
$$BIN 2 = 45 \times 95 \checkmark$$

S35586

2/2



TLC + TOP STAIRS = 230 x 400
9.20m²



MLC + MAIN STAIRS = 390 x 400
15.60m²