



## Culford Mansions, SW3

£2,299,500

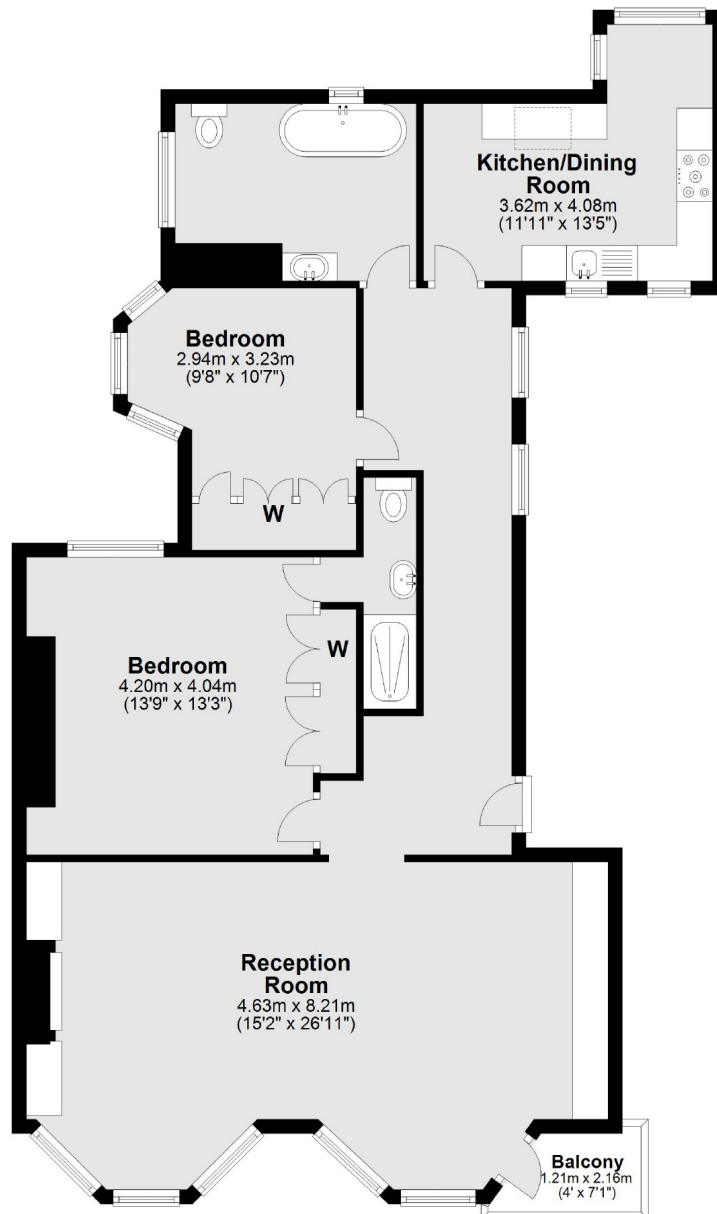
A wonderfully bright apartment boasting a double reception room, high ceilings and plenty of natural light. The property is presented in immaculate condition throughout and has lovely open views across Chelsea rooftops from the front and rear.

Culford Mansions is located on the very quiet Culford Gardens which is moments from Duke of York Square and Sloane Square tube station. The building has recently finished a thorough schedule of works including the lift, communal areas and water tanks.

### Features

- Share Of Freehold
- Resident Caretaker
- Double Reception Room
- Juliet Balcony
- Lift
- Smart Communal Areas

## Culford Gardens, London, SW3



Fourth Floor

Total area: approx. 103.1 sq. metres (1109.9 sq. feet)

### Contact

To arrange a viewing call our office on the number below or visit our website.



Energy Rating: D. We aim to make our particulars both accurate and reliable. However they are not guaranteed; nor do they form part of an offer or contract. If you require clarification on any points then please contact us, especially if you're traveling some distance to view. Please note that appliances and heating systems have not been tested and therefore no warranties can be given as to their good working order.