



- notes
- Do not scale directly from drawing, all measurements are to be taken from site prior to the commencement of works.
 - Golden houses developments ltd reserves the right to all drawings produced, please see company Terms & Conditions for further details
 - Indicates new block work (plan/section)
 - Indicates new brick work (plan/section)
 - Indicates new brick work (elevation)
 - In area's indicated on plan/section drawings to be laid header bond with projecting brick as detail drawing 'TBC'
 - In area's indicated on elevation drawings to be laid header bond with projecting brick as detail drawing 'TBC'
 - Indicates wall type
 - Indicated 30 min's fire complementation
 - Indicated 30 min's fire complementation
 - Dimensions in Blue indicate grid line to drainage c/c
 - Dimensions in Green indicate the faces of linings. Refer to drawings 622_700 & 622_701 for specification of each wall
 - Dimensions in Black indicate critical setting out dimensions to stud wall
 - Dimensions in Red indicate structural openings
 - Soil Ventilation Pipe
 - Stub stack
 - Rainwater pipe
 - Gully

(241) → HW 2701 207mm (ENG PLANK) 19mm
 (322.6) → HW 2208 180mm (ENG. PLANK) 14mm
 (109.1) → SVALBARD (CARPET) 15mm
 (21.9) → TREND COLD (TILES)
 (31.3) → FIFIELD (TILES)
 (129.3) → NEW ENGLAND (ME6022 unrolled flooring carpet)
 (0) → MATERNORN WHITE

date	revision	description
30.01.19	A	Wall & Floor built up added
28.01.19	B	Wall/Floor built up, stairs doors added

project:
 74 LEOPOLD ROAD
 WIMBLEDON LONDON, SW19

client:
 WEST ELEVEN LIMITED



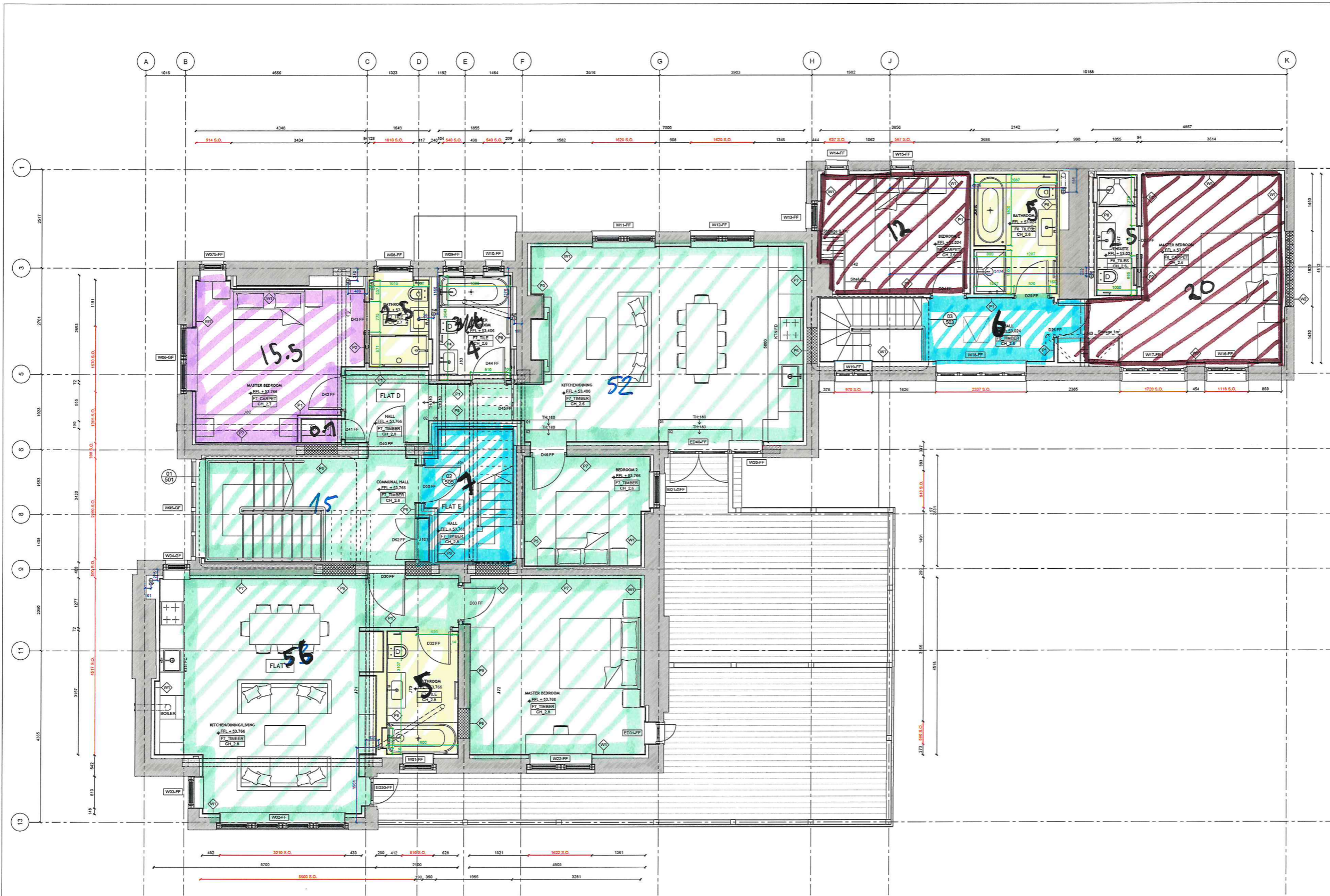
Golden Houses Developments
 Telephone: +44(0)20 7288 6838
 Email: info@goldenhouses.co.uk
 Business Design Centre, Unit 124, 52 Upper Street, N1 0QH London
 Website: www.goldenhouses.co.uk

PL GROUND FLOOR
 SCALE 1:50

title:
 PROPOSED GROUND FLOOR CONVERSION

project no: 622	drawing no: 100	revision: B
date: 31/OCT/18	scale: 1:50 @ A1	drawn: MG

drawing status:
 CONSTRUCTION



- notes
- Do not scale directly from drawing, all measurements are to be taken from site prior to the commencement of works.
- Golden houses developments ltd reserves the right to all drawings produced, please see company Terms & Conditions for further details
- Indicates new brick work (plan/section)
 - Indicates new brick work (elevation)
 - In area's indicated on plan/section drawings to be laid header bond with projecting brick as detail drawing 'TBC'
 - In area's indicated on elevation drawings to be laid header bond with projecting brick as detail drawing 'TBC'
 - Indicates wall type
 - Indicated 30 min's fire complementation
 - Dimensions in Blue indicate grid line to drainage c/c
 - Dimensions in Green indicate the faces of linings. Refer to drawings 622_700 & 622_701 for specification of each wall
 - Dimensions in Black indicate critical setting out dimensions to stud wall
 - Dimensions in Red indicate structural openings
 - Soil Ventilation Pipe
 - Stub stack
 - Rainwater pipe
 - Gully

date	revision	description
30.01.19	A	Wall & Floor built up added
28.01.19	B	Wall/Floor built up, stairs doors added.

project:
74 LEOPOLD ROAD
WIMBLEDON LONDON, SW19

client:
WEST ELEVEN LIMITED



Golden Houses Developments
Telephone: +44(0)20 7286 6838

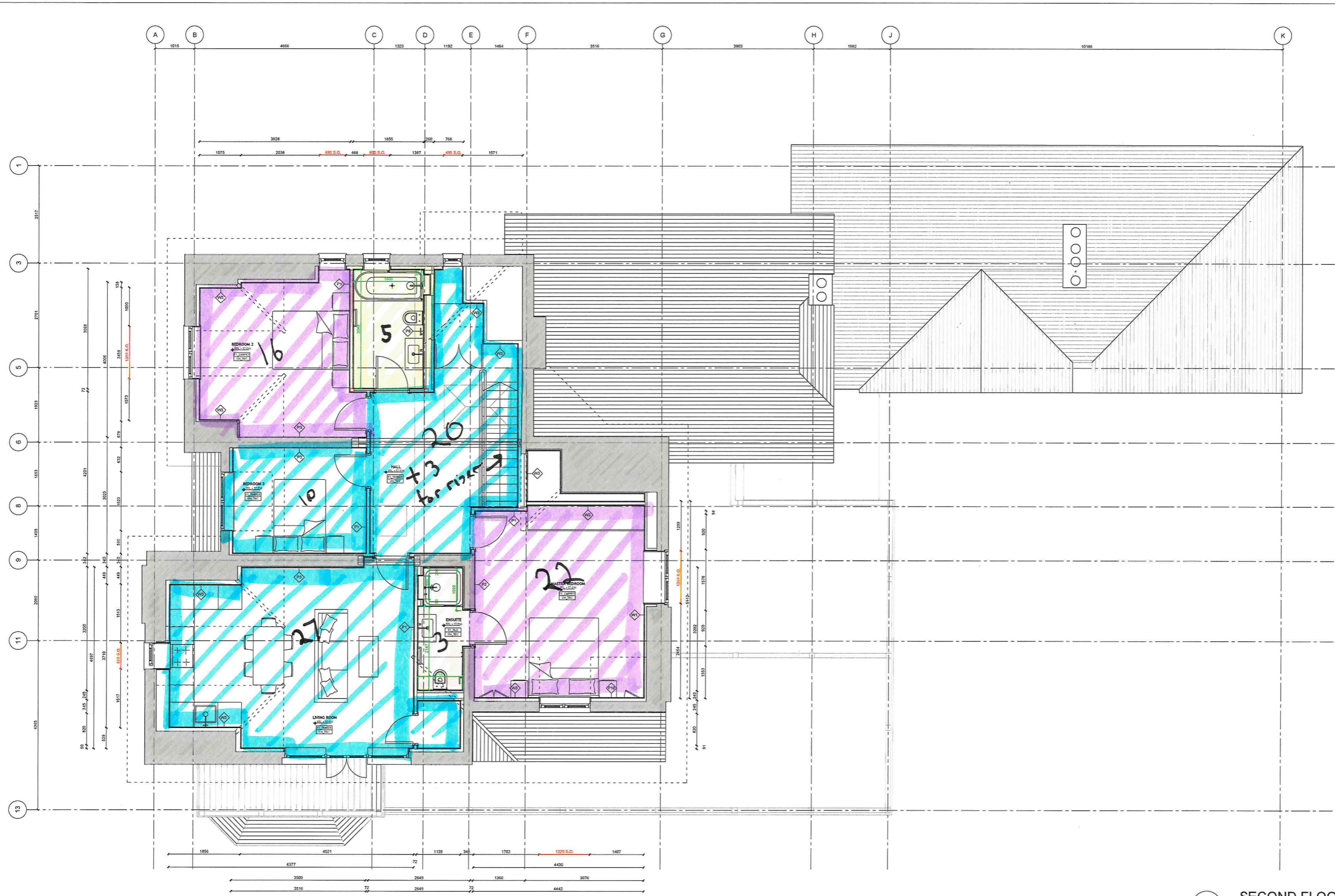
Business Design Centre
Unit 124
52 Upper Street
N1 0QH London
Email: info@goldenhouses.co.uk
Website: www.goldenhouses.co.uk

title:
PROPOSED FIRST FLOOR PLAN
CONVERSION






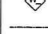


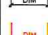



project no: 622	drawing no: 101	revision: B
date: 31/OCT/18	scale: 1:50 @ A1	drawn: MG


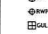


drawing status:
CONSTRUCTION

PL FIRST FLOOR
SCALE 1:50



notes
 Do not scale directly from drawing, all measurements are to be taken from site prior to the commencement of works.
 Golden houses developments ltd reserves the right to all drawings produced, please see company Terms & Conditions for further details

-  Indicates new block work (plan/section)
-  Indicates new brick work (plan/section)
-  Indicates new brick work (elevation)
-  In area's indicated on plan/section drawings to be laid header bond with projecting brick as detail drawing 'TBC'
-  In area's indicated on elevation drawings to be laid header bond with projecting brick as detail drawing 'TBC'
-  Indicates wall type
-  Indicated 30 min's fire complementation
-  Indicated 30 min's fire complementation
-  Dimensions in Blue indicate grid line to drainage c/c
-  Dimensions in Green indicate the faces of linings. Refer to drawings 622_703 & 622_701 for specification of each wall
-  Dimensions in Black indicate critical setting out dimensions to stud wall
-  Dimensions in Red indicate structural openings

-  Soil Ventilation Pipe
-  Stub stack
-  Rainwater pipe
-  Gully

date	revision	description
30.01.19	A	Wall & Floor built up added.

project:
 74 LEOPOLD ROAD
 WIMBLEDON LONDON, SW19

client:
 WEST ELEVEN LIMITED

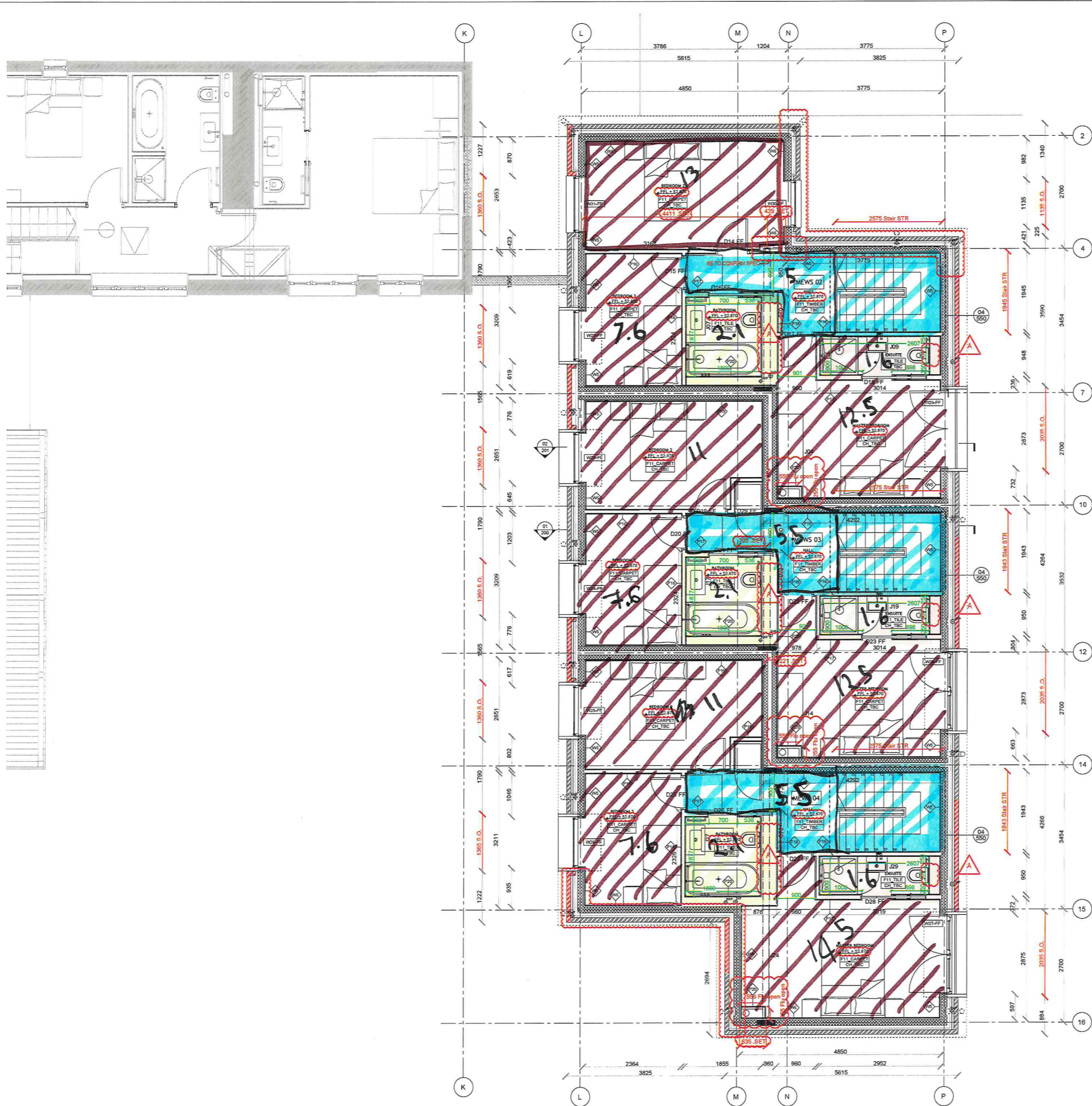
PL SECOND FLOOR
 SCALE 1:50

title:
 PROPOSED SECOND FLOOR PLAN
 CONVERSION

project no:	drawing no:	revision:
622	102	_A

date:	scale:	drawn:
31/OCT/18	1:50 @ A1	MG

drawing status:
CONSTRUCTION



NOTE: REFER TO '622_110' FOR BRICK SETTING OUT DIMENSIONS

notes
Do not scale directly from drawing, all measurements are to be taken from site prior to the commencement of works.
Golden houses developments ltd reserves the right to all drawings produced, please see company Terms & Conditions for further details

- KEY**
- Indicates new block work (plan/section) to engineers specification
 - Indicates stretcher bond (plan/section) Brick_S-Anselmo - AD65RBB Itanda Bianco_215 x 102 x 65
 - Indicates stretcher bond (Elevation) Brick_S-Anselmo - AD65RBB Itanda Bianco_215 x 102 x 65
 - Indicates header bond (Plan) with projecting brick as detail drawing '622_610' Brick_S-Anselmo - AD65RBB Itanda Bianco_215 x 102 x 65
 - Indicates header bond (Elevation) with projecting brick as detail drawing '622_610' Brick_S-Anselmo - AD65RBB Itanda Bianco_215 x 102 x 65
 - Indicates soldier course (Elevation) as detail drawing '622_611' Brick_S-Anselmo - AD65RBB Itanda Bianco_290 x 102 x 65
 - Indicates soldier course (Plan) as detail drawing '622_611' Brick_S-Anselmo - AD65RBB Itanda Bianco_290 x 102 x 65
 - Indicates wall type
 - Indicated 30 min's fire complementation
 - Indicated 30 min's fire complementation
 - Dimensions in Blue indicate grid line to drainage c/c
 - Dimensions in Green indicate the faces of linings. Refer to drawings 622_700 & 622_701 for specification of each wall
 - Dimensions in Black indicate critical setting out dimensions to stud wall
 - Dimensions in Red indicate structural openings
 - Soil Ventilation Pipe
 - Stub stack
 - Rainwater pipe
 - Gully

date	revision	descriptio
11.04.19	A	Updated to client comments. Niches omitted. Levels updated, steel setting out and structural flue opening added.

project:
74 LEOPOLD ROAD
WIMBLEDON LONDON, SW19

client:
WEST ELEVEN LIMITED

GOLDEN HOUSES

Golden Houses Developments
Business Design Centre
Unit 124
52 Upper Street
N1 0QH London

Telephone
+44(0)20 7288 6338

Email
info@GOLDENHOUSES.CO.UK

Website
www.goldenhouses.co.uk

title:
PROPOSED FIRST FLOOR PLAN
NEW BUILD

project no: 622 drawing no: 111 revision: A

date: 30/JAN/19 scale: 1:100 @ A1 drawn: MG

drawing status:
CONSTRUCTION

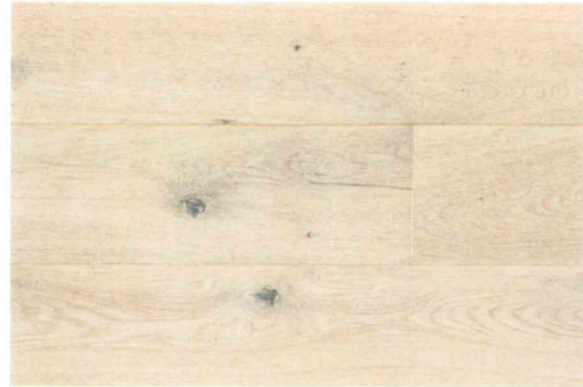
PL New Build_First Floor
SCALE 1:50

TECHNICAL DATA SHEET

HW2208 Alsace

PurePlank

USAGE: (SEE HAVWOODS QUICK REFERENCE GUIDE TO CHOOSING THE CORRECT FLOOR).



INSTALLATION METHODS

Fully Bonded	Yes*
Nailed	No
Floated on underlay	Yes* (recommended)
Over Underfloor Heating	Yes*#

GRADING CRITERIA

Typically, character grade will include both heartwood and sapwood and allows a wider range of colour variation. Knots are larger and you should expect checks (cracks across the growth ring). Filler will be used, the colour of which is carefully selected to complement the wood rather than to match it exactly, and it may vary from batch to batch.

N.B. The product grading criteria is inspected at each mill visually and should be taken as an approximation only. Please ask for further details

PRODUCT DETAILS

Product Code	HW2208
Product Range	PurePlank
Construction	Engineered
Specie	European Oak
Pattern	1-Strip
Process	Sanded
Finish	Matt Lacquered
Profile	Click System
Edge Profile	4-Sided Bevelled Edge
Top Layer	2.5mm European Oak
Backing	Pine Plywood
Thickness	14/2.5mm
Width	180mm
Length	1800mm (Packs may include shorter boards)
Pack Size	2.26m ²
Grade	Character
Maintenance	Comprehensive maintenance instructions and materials are available from Havwoods for all floors.

TECHNICAL CRITERIA

Origin	Europe
Responsible Certification	FSC® Certified (SGSCH-COC-008968)
Janka Hardness Rating	1,120 lbf (4,980N)
Formaldehyde Emission	E1 (EN 717-1:2006)
Pentachlorophenol Emission	< 5ppm (CEN/TR 14823)
Slip testing	57/28 PTV (CEN/TS 15676:2007)
Reaction to Fire Certification	Dfl-s1 (EN 13501-1)
Thermal Conductivity	λ 0.13 W/m K (EN 12664)

* Subject to compatible subfloor and correct installation (see Installation Guidelines) including sensors.
Temperature of top-face must never be allowed to exceed 27°C. UFH protocol to control temperature conditions is recommended.

INSTALLATION AND WARRANTY

All Havwoods floors must be installed by a competent installer who will have the necessary skills and take individual site circumstances into account. Havwoods warranty will apply only to floors which have been installed by a competent flooring installer comparable to BS8201 in the UK or equivalent standards worldwide.

© This technical data sheet was written by Havwoods International. At the time of writing and publication of the sheet, all information is specified correctly. The company reserves the right to change the specifications of this product at any time without prior notice to third parties. The photographs used in this sheet are intended only as illustrations. No rights can be derived from them.

20-FEBRUARY-2019/EU



Havwoods Limited, Carnforth Business Park, Oakwood Way, Carnforth LA5 9FD
T. +44(0)1524 737000 F. +44(0)1524 737001
info@havwoods.co.uk www.havwoods.co.uk