

B8201
The Williams Trust

1 of 4

~~As per Health and Safety~~
~~Option~~

$$\text{Living Room} = 430 \times 500$$

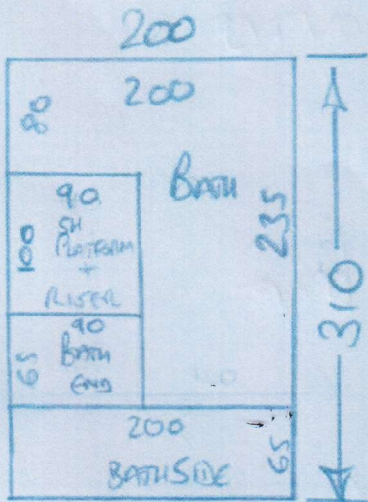
$$\text{Kitchen 1} = 630 \times 500$$

$$\text{Kitchen 2} = 375 \times 500$$

$$1435 \times 500$$

$$= 71.75 \text{m}^2$$

Revolution
Supreme
- Penton



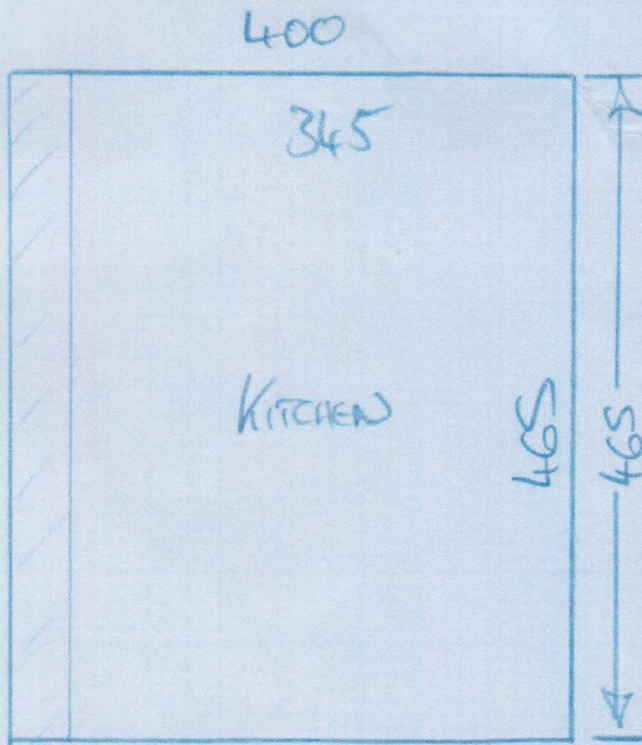
P28201
The Williams Trust

2 of 4

~~Lincoln Vinyl~~
~~Lincoln Vinyl~~

BATHROOM = 310×200

KITCHEN = 465×400



= $24.8m^2$

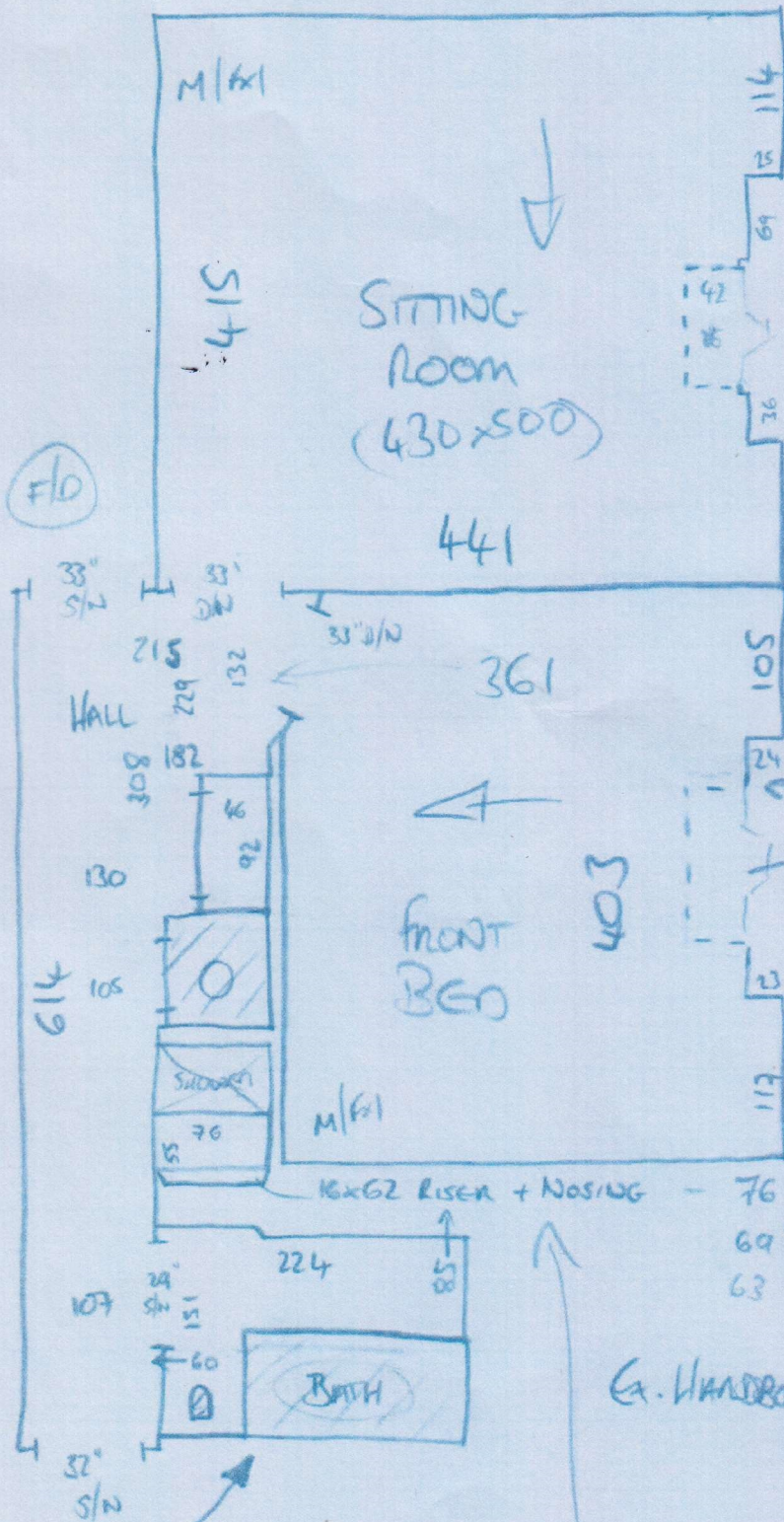
LINCOLN VINYL

- BETHANY

- Rev. Supreme Court

- LINCOLN - BOWMAN

P28201
The Williams Trust



3 of 4

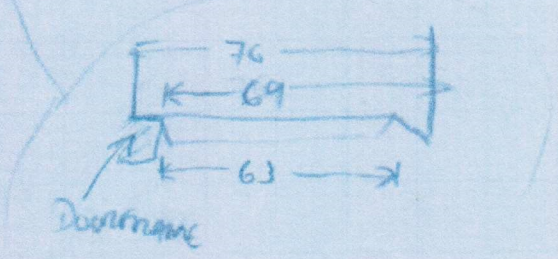
Fit OVER
HEARTH

TILED HEARTH
Threshold of
floorboards
HERE

16x62 RISE + NOSING - 76 full width
69 from door frame
63 from door frame to angle

Ex. HANDBOARDS TO BATH

* Fit C' VINYL To SIDE & END
PANEL OF BATH USING FGO
ADHESIVE. + Fit 'TILE LIP'
To CORNER WHERE SIDE & END MEET.



P28201
The Williams Trust

4 of 4

