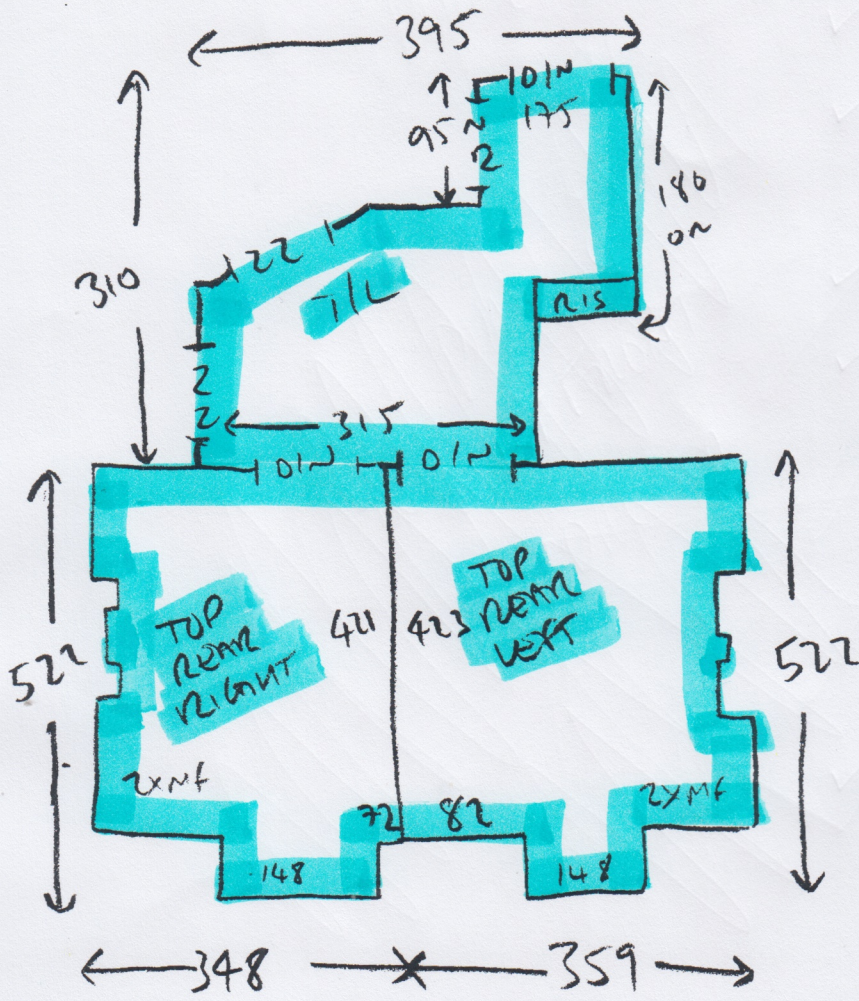


**PHASE 1 = TOP BEDS + TOP S+LANDS
x 2**

535849



113

TIL = PLAN

2xST = 45x90

1/4 A = 120 OR x 96

2xST = 45x96

1/4 B = 125 OR x 91

9xST = 45x90

BIN = 45x115

~~PLAN = PLAN~~

~~2xST = 45x91~~

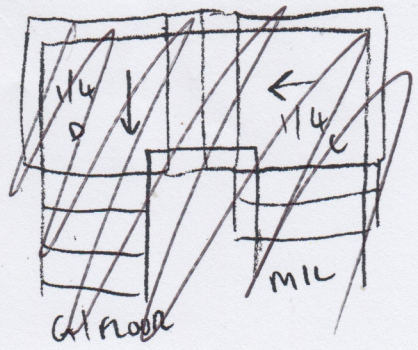
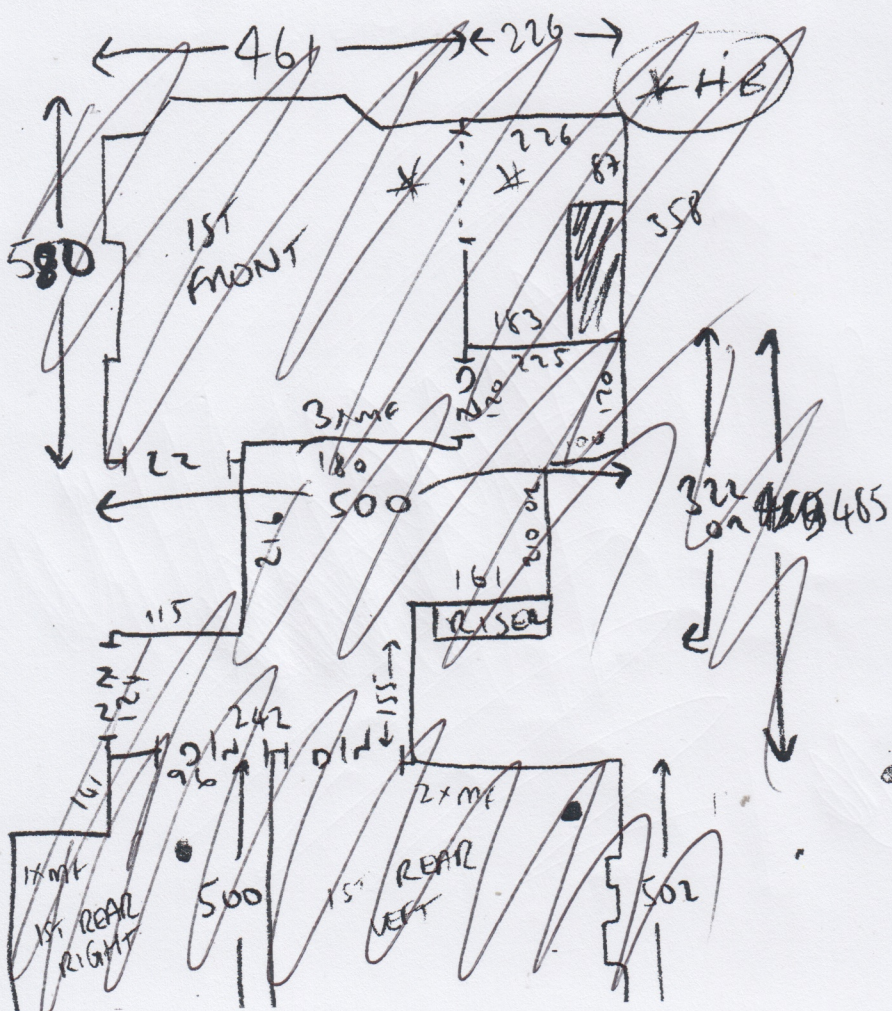
~~1/4 C = 120 OR x 97~~

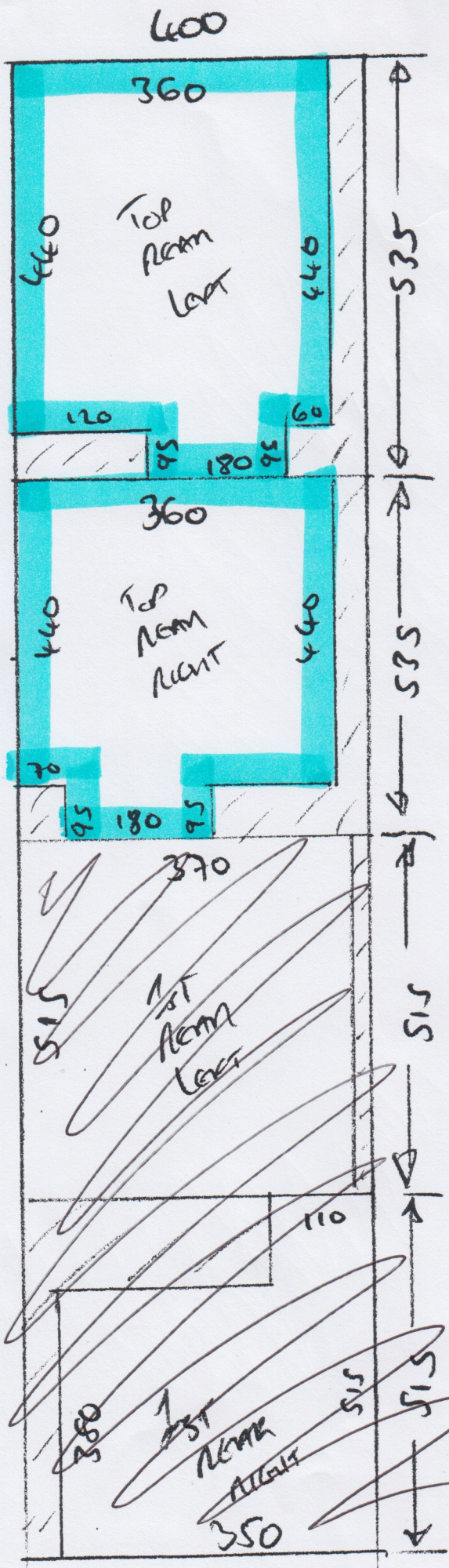
~~2xST = 45x97~~

~~1/4 D = 125 OR x 91~~

~~10xST = 45x92~~

~~BIN = 45x175~~





S35849

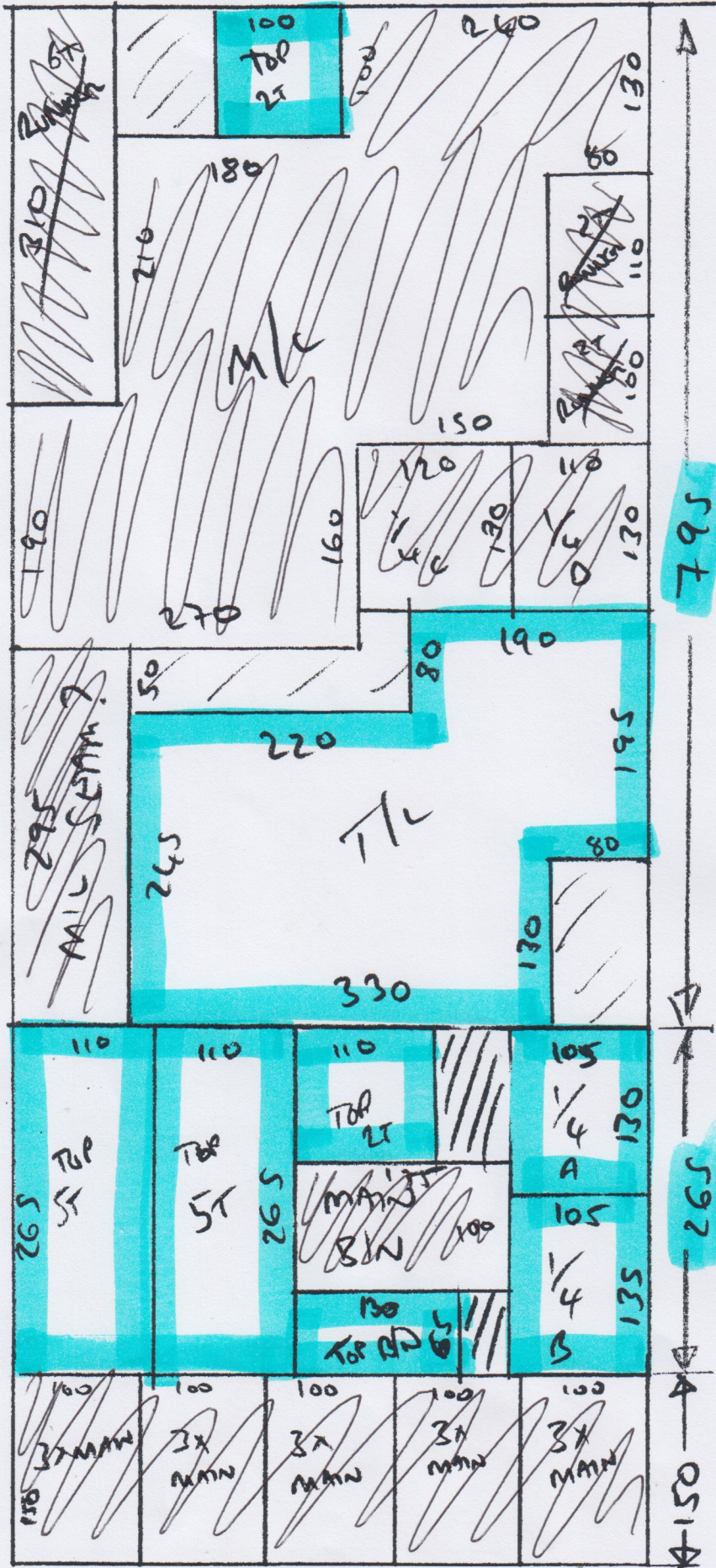
23

~~S35 x 400~~
~~S35 x 400~~
~~S15 x 400~~
~~S15 x 400~~

De Bens

PHASE 1 =
 TOP BEDS x 2
 +
 TOP S + LANDS

500



535849

3/3

795x500

265x500

150x500

PHASE 1 =

TOP BEDS x 2

+

TOP S+LANDS