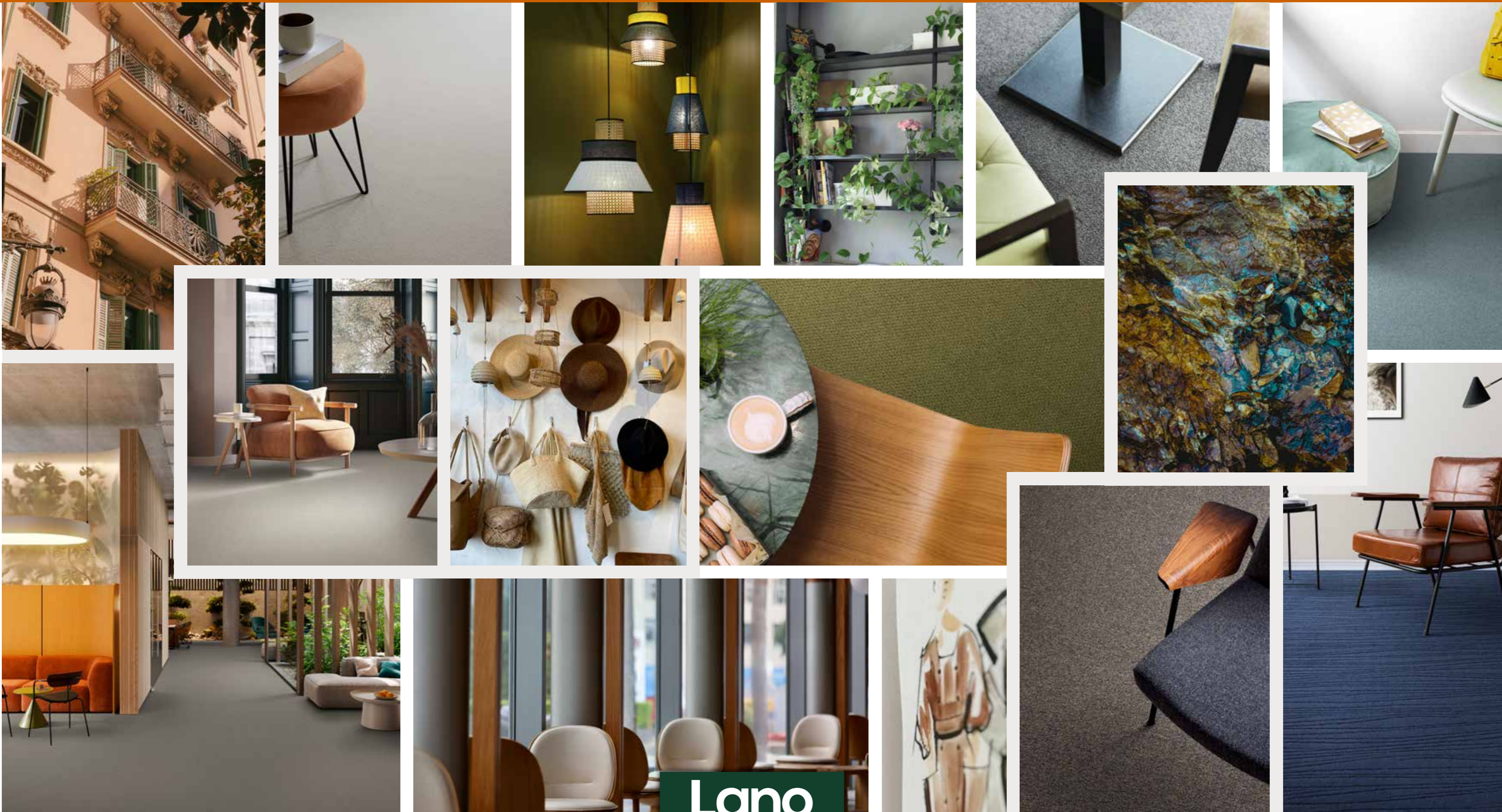


PILOTIS²

lano carpets for contract



Lano
Carpet Solutions

CARVE CLASSIC



FBP: CFA.0261 | 400 cm



FBP: CFA.0291 | 400 cm



FBP: CFA.0100 | 400 cm



FBP: CFA.0310 | 400 cm



FBP: CFA.0593 | 400 cm



FBP: CFA.0410 | 400 cm



FBP: CFA.0812 | 400 cm



FBP: CFA.0722 | 400 cm



FBP: CFA.0251 | 400 cm



FBP: CFA.0182 | 400 cm



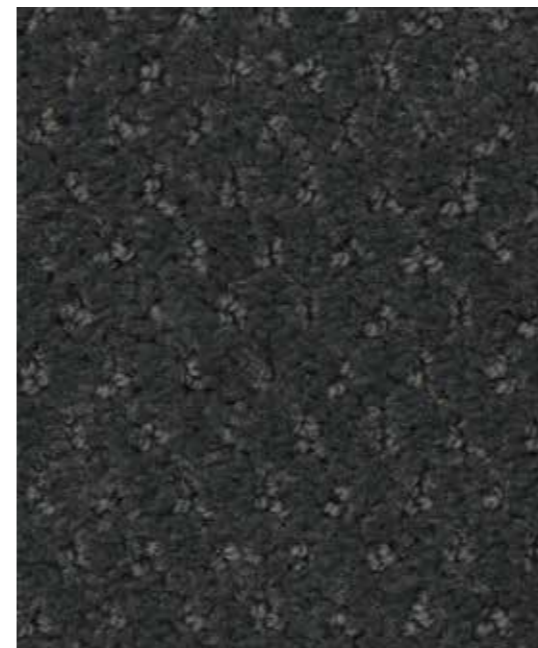
FBP: CFA.0793 | 400 cm



FBP: CFA.0431 | 400 cm



FBP: CFA.0840 | 400 cm



FBP: CFA.0821 | 400 cm



FBP: CFA.0802 | 400 cm

CARVE CLASSIC



CARVE LINEA



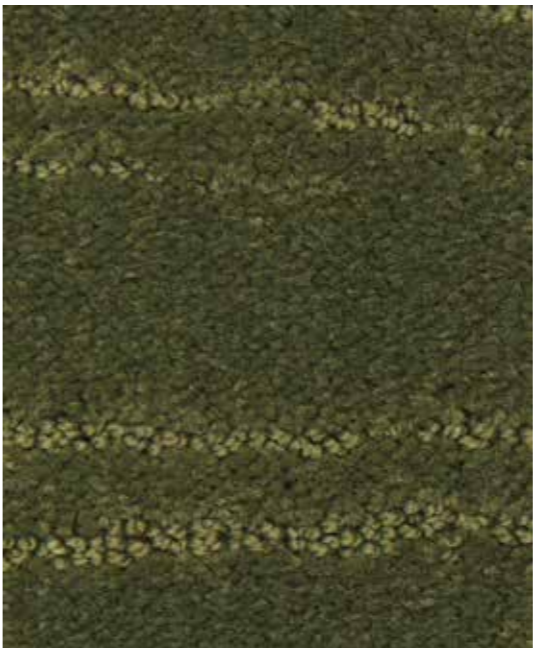
CARVE LINEA



FBP: CFB.0261 | 400 cm



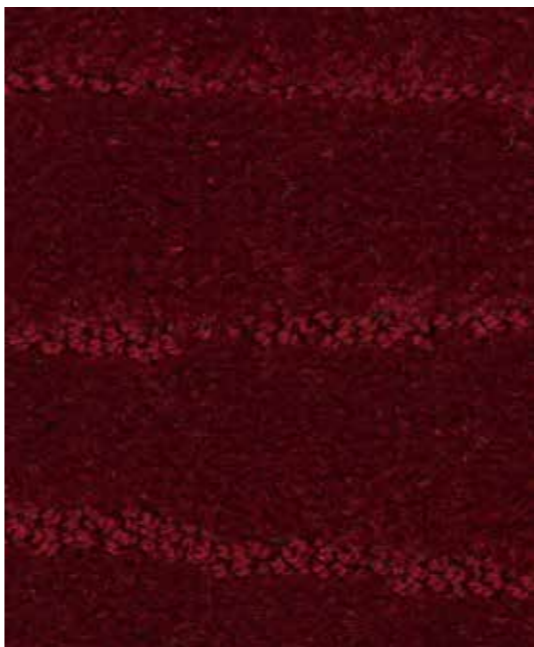
FBP: CFB.0310 | 400 cm



FBP: CFB.0593 | 400 cm



FBP: CFB.0431 | 400 cm



FBP: CFB.0100 | 400 cm



FBP: CFB.0722 | 400 cm



FBP: CFB.0840 | 400 cm



FBP: CFB.0291 | 400 cm



FBP: CFB.0793 | 400 cm



FBP: CFB.0821 | 400 cm



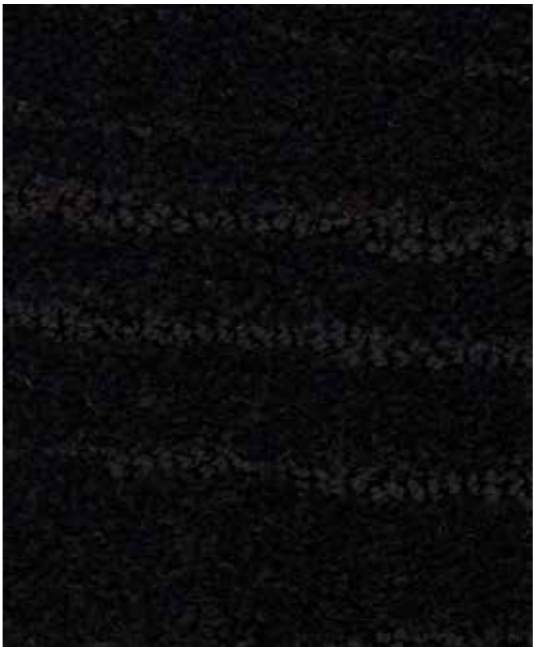
FBP: CFB.0251 | 400 cm



FBP: CFB.0182 | 400 cm



FBP: CFB.0410 | 400 cm



FBP: CFB.0802 | 400 cm



FBP: CFB.0812 | 400 cm

ZEN



SB: ZEN.0790 | 400 cm



SB: ZEN.0791 | 400 cm



SB: ZEN.0812 | 400 cm



SB: ZEN.0800 | 400 cm



SB: ZEN.0830 | 400 cm



SB: ZEN.0742 | 400 cm



SB: ZEN.0792 | 400 cm



SB: ZEN.0832 | 400 cm



SB: ZEN.0810 | 400 cm



SB: ZEN.0840 | 400 cm



SB: ZEN.0624 | 400 cm



SB: ZEN.0690 | 400 cm



SB: ZEN.0871 | 400 cm



SB: ZEN.0821 | 400 cm



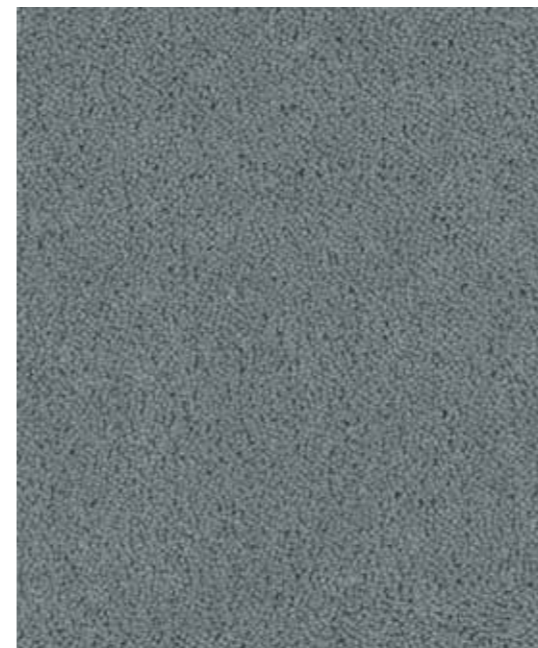
SB: ZEN.0872 | 400 cm



SB: ZEN.0552 | 400 cm



SB: ZEN.0850 | 400 cm



SB: ZEN.0851 | 400 cm



SB: ZEN.0892 | 400 cm

ZEN



ZEN



ZEN



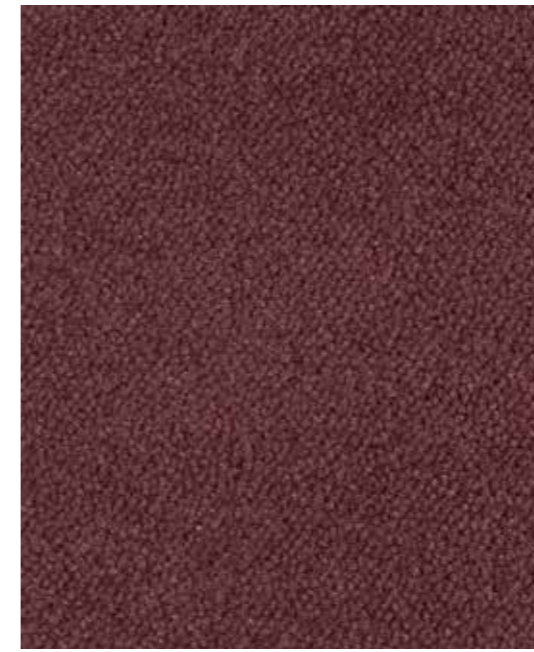
SB: ZEN.0820 | 400 cm



SB: ZEN.0280 | 400 cm



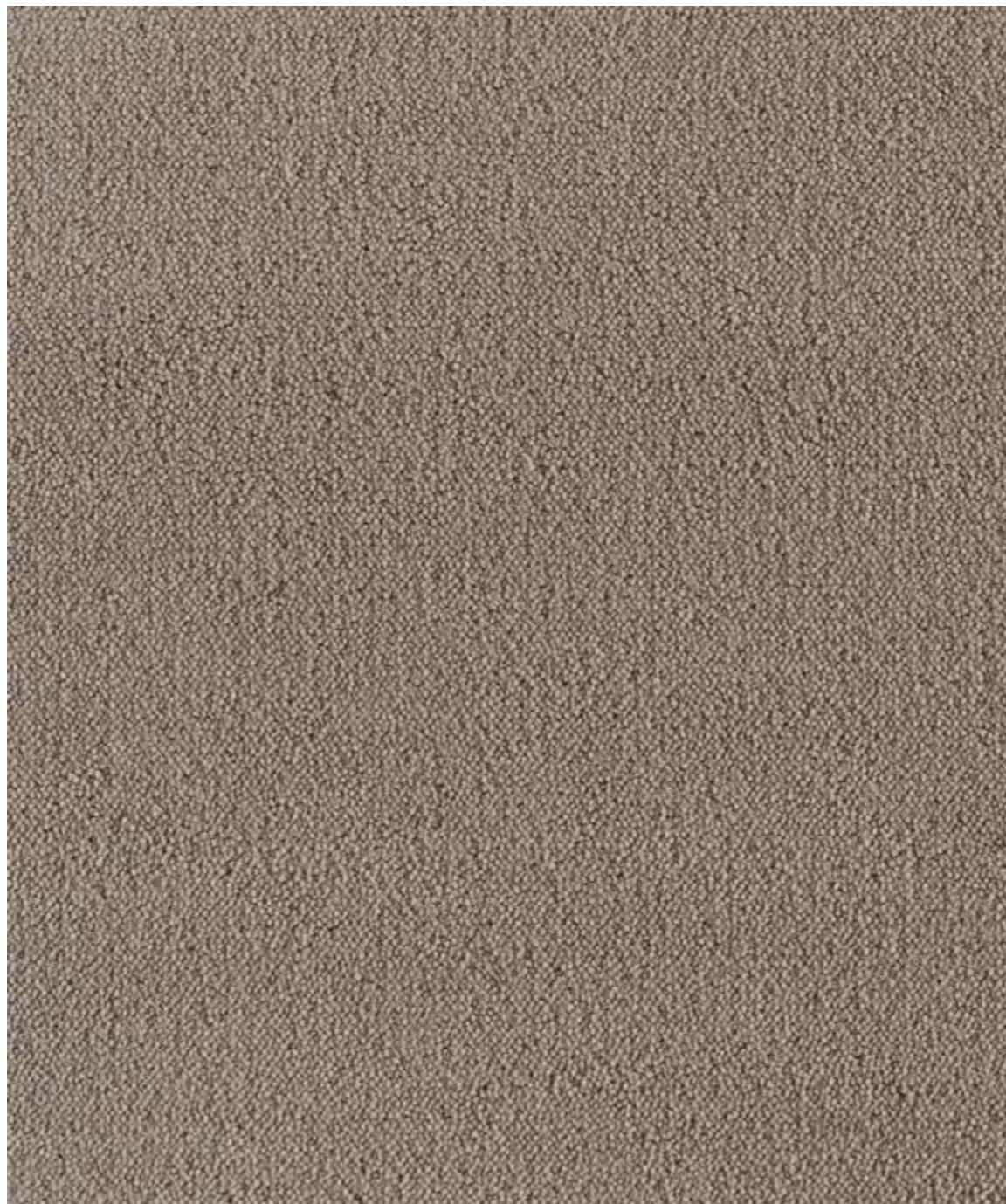
SB: ZEN.0204 | 400 cm



SB: ZEN.0061 | 400 cm



SB: ZEN.0109 | 400 cm



SB: ZEN.0410 | 400 cm



SB: ZEN.0423 | 400 cm



SB: ZEN.0110 | 400 cm



SB: ZEN.0141 | 400 cm



SB: ZEN.0261 | 400 cm



SB: ZEN.0313 | 400 cm



SB: ZEN.0442 | 400 cm



SB: ZEN.0434 | 400 cm



SB: ZEN.0451 | 400 cm



SB: ZEN.0164 | 400 cm



SB: ZEN.0271 | 400 cm

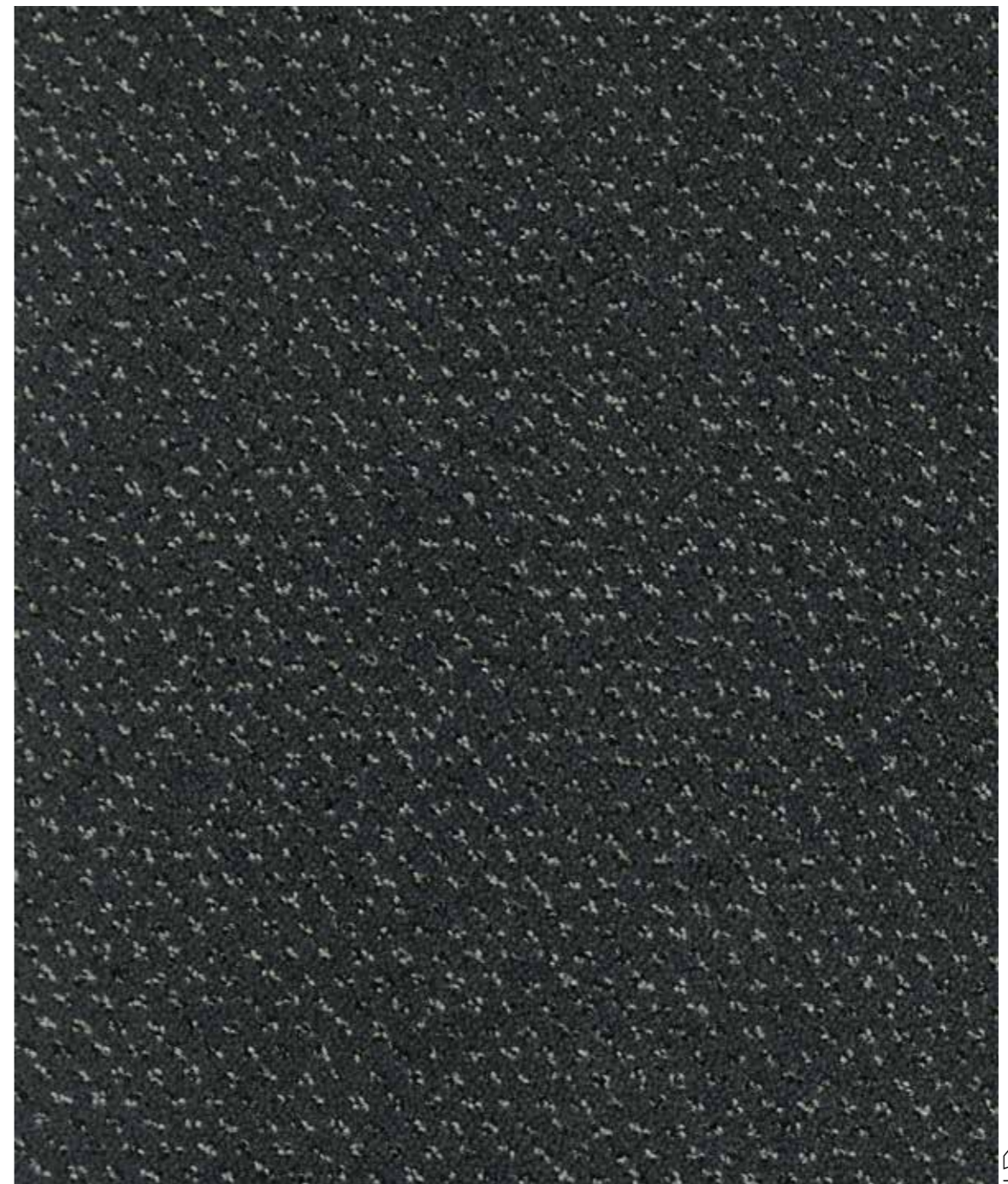
SQUARE



SB: SQS.0122 | 400 cm



SB: SQS.0804 | 400 cm



SB: SQS.0822 | 400 cm



SB: SQS.0282 | 400 cm



SB: SQS.0404 | 400 cm



SB: SQS.0814 | 400 cm



SB: SQS.0214 | 400 cm



SB: SQS.0414 | 400 cm



SB: SQS.0824 | 400 cm



SB: SQS.0811 | 400 cm



SB: SQS.0264 | 400 cm



SB: SQS.0424 | 400 cm



SB: SQS.0842 | 400 cm



SB: SQS.0772 | 400 cm



SB: SQS.0701 | 400 cm

SQUARE



MINERVA



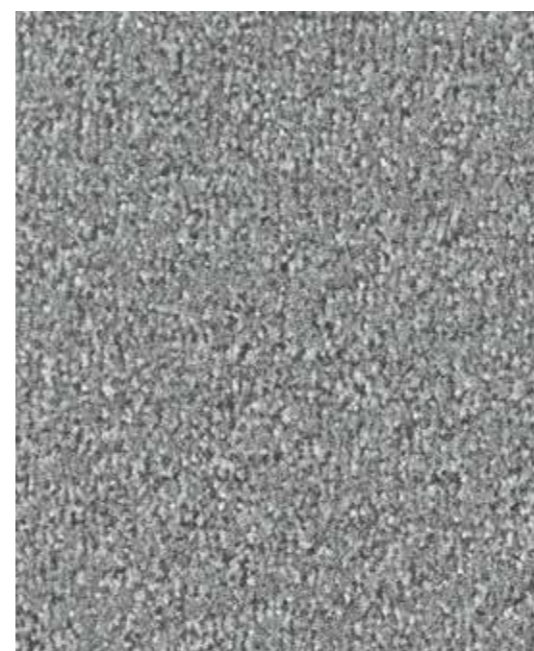
MINERVA



SB: MIN.0811 | 400 cm



SB: MIN.0821 | 400 cm



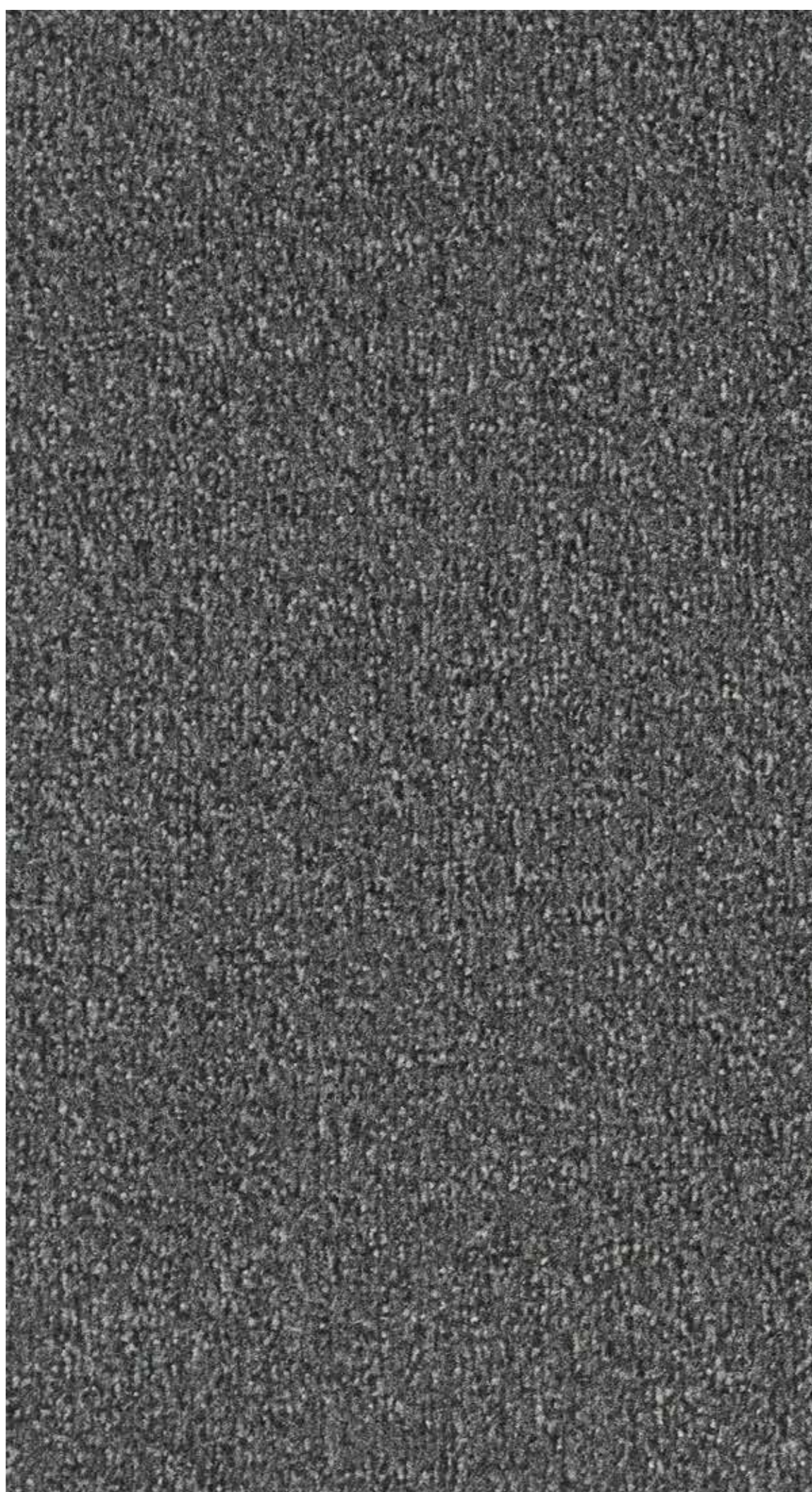
SB: MIN.0870 | 400 cm



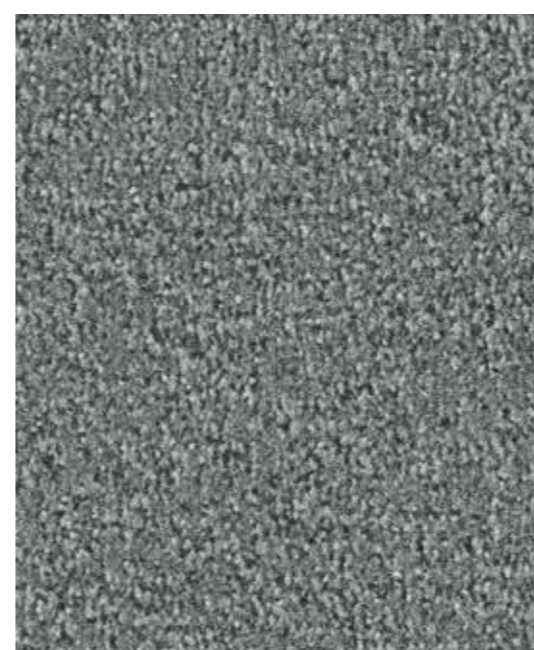
SB: MIN.0431 | 400 cm



SB: MIN.0481 | 400 cm



SB: MIN.0820 | 400 cm



SB: MIN.0850 | 400 cm



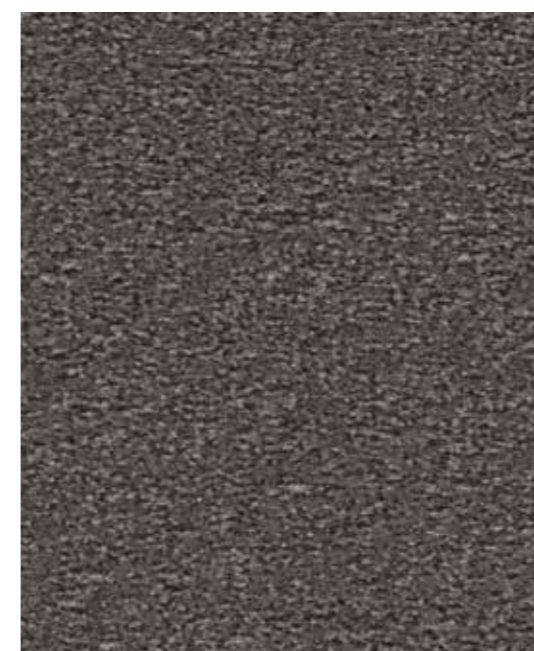
SB: MIN.0421 | 400 cm



SB: MIN.0270 | 400 cm



SB: MIN.0701 | 400 cm



SB: MIN.0401 | 400 cm



SB: MIN.0210 | 400 cm



SB: MIN.0730 | 400 cm



SB: MIN.0810 | 400 cm



SB: MIN.0120 | 400 cm



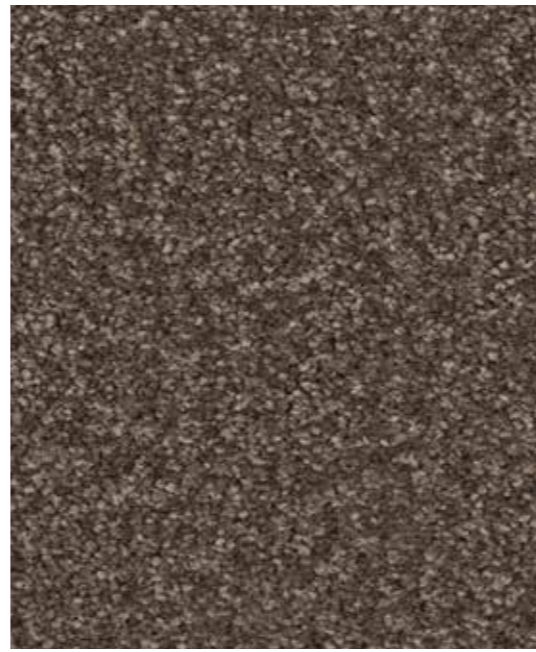
LOTUS



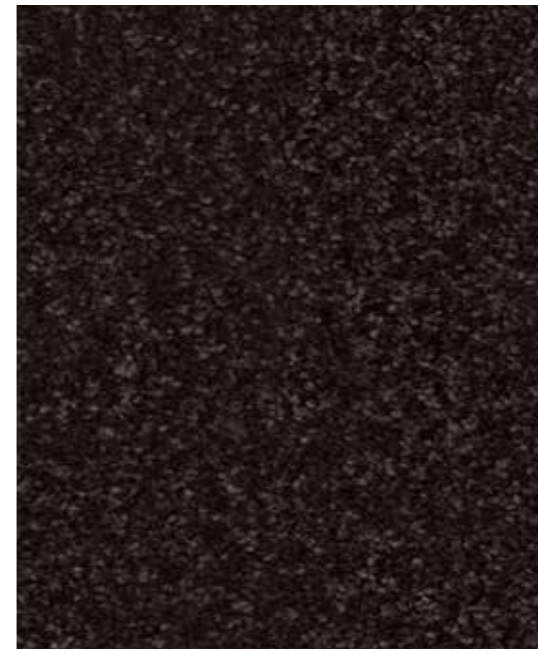
SB: LOT.0250 | 400 cm



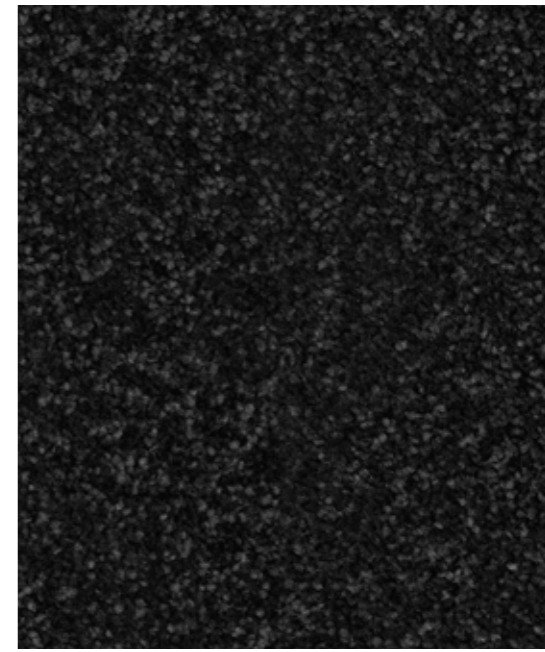
SB: LOT.0260 | 400 cm



SB: LOT.0410 | 400 cm



SB: LOT.0400 | 400 cm



SB: LOT.0800 | 400 cm



SB: LOT.0240 | 400 cm



SB: LOT.0430 | 400 cm



SB: LOT.0590 | 400 cm



SB: LOT.0830 | 400 cm



SB: LOT.0810 | 400 cm



SB: LOT.0450 | 400 cm



SB: LOT.0860 | 400 cm



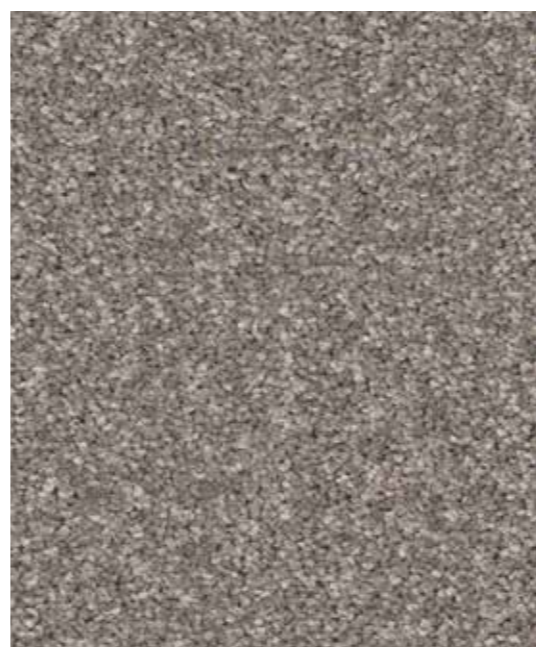
SB: LOT.0820 | 400 cm



SB: LOT.0440 | 400 cm



SB: LOT.0870 | 400 cm



SB: LOT.0840 | 400 cm



LOTUS



MIRI

sisters



MIRI



SB: MIR.0810 | 400 cm



SB: MIR.0400 | 400 cm



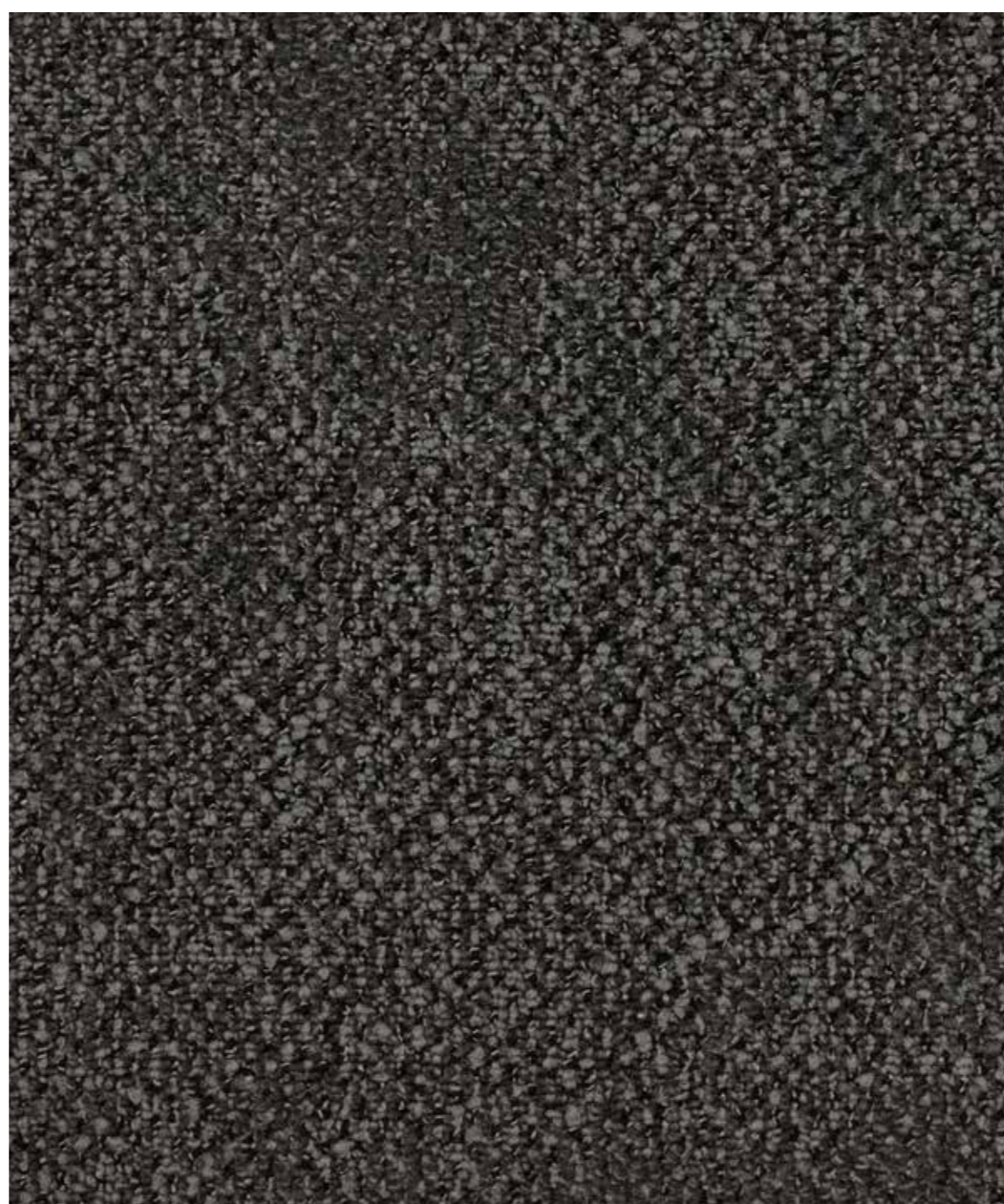
SB: MIR.0410 | 400 cm



SB: MIR.0140 | 400 cm



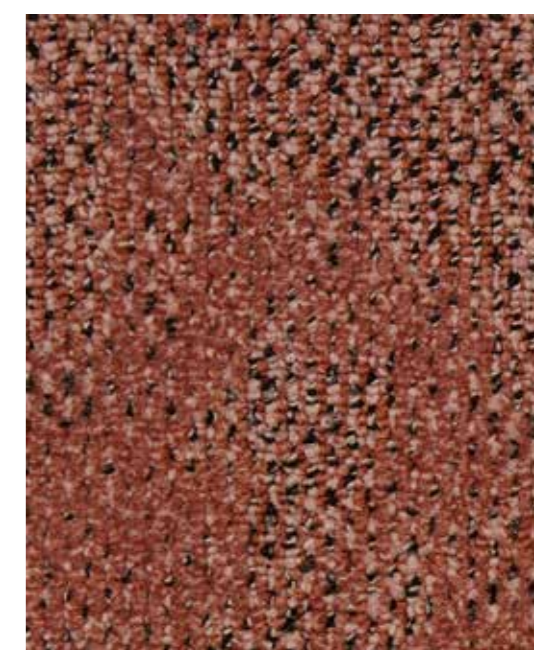
SB: MIR.0830 | 400 cm



SB: MIR.0820 | 400 cm



SB: MIR.0270 | 400 cm



SB: MIR.0180 | 400 cm



SB: MIR.0840 | 400 cm



SB: MIR.0230 | 400 cm



SB: MIR.0260 | 400 cm



SB: MIR.0250 | 400 cm



SB: MIR.0430 | 400 cm

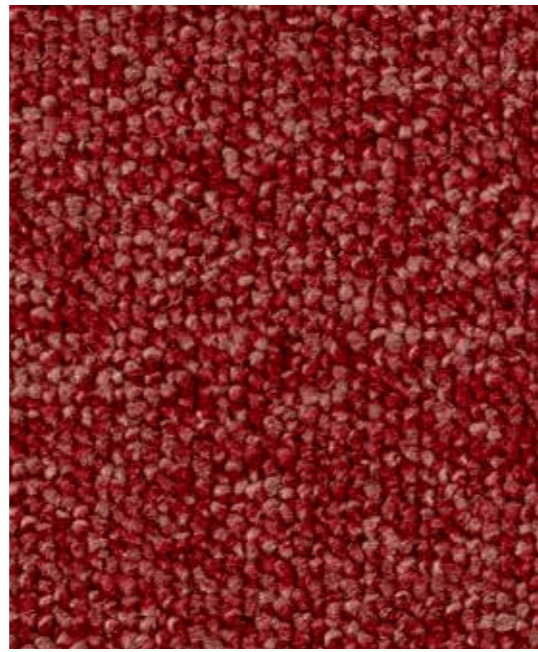


SB: MIR.0640 | 400 cm

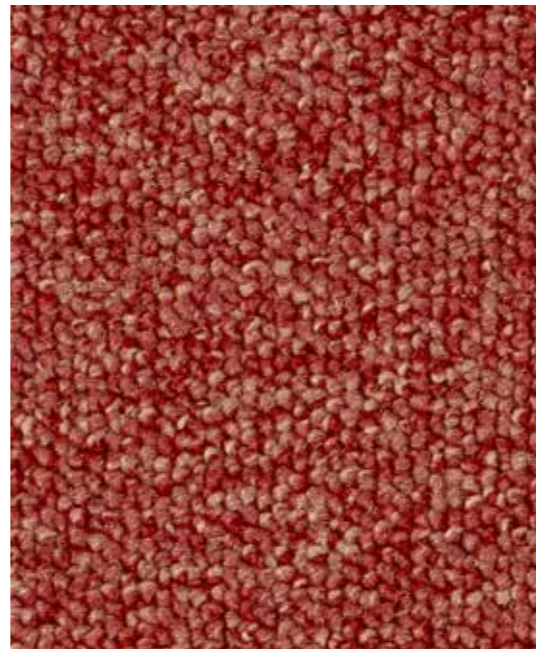


SB: MIR.0850 | 400 cm

GRANIT



SB: GRT.0110 | 400 cm, 500 cm



SB: GRT.0121 | 400 cm, 500 cm



SB: GRT.0819 | 400 cm, 500 cm



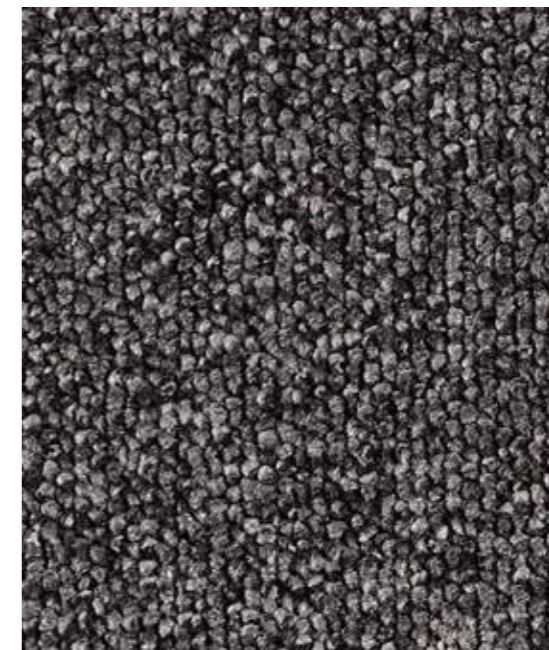
SB: GRT.0134 | 400 cm, 500 cm



SB: GRT.0400 | 400 cm, 500 cm



SB: GRT.0810 | 400 cm, 500 cm



SB: GRT.0802 | 400 cm, 500 cm



SB: GRT.0300 | 400 cm, 500 cm



SB: GRT.0410 | 400 cm, 500 cm



SB: GRT.0269 | 400 cm, 500 cm



SB: GRT.0220 | 400 cm, 500 cm



SB: GRT.0257 | 400 cm, 500 cm

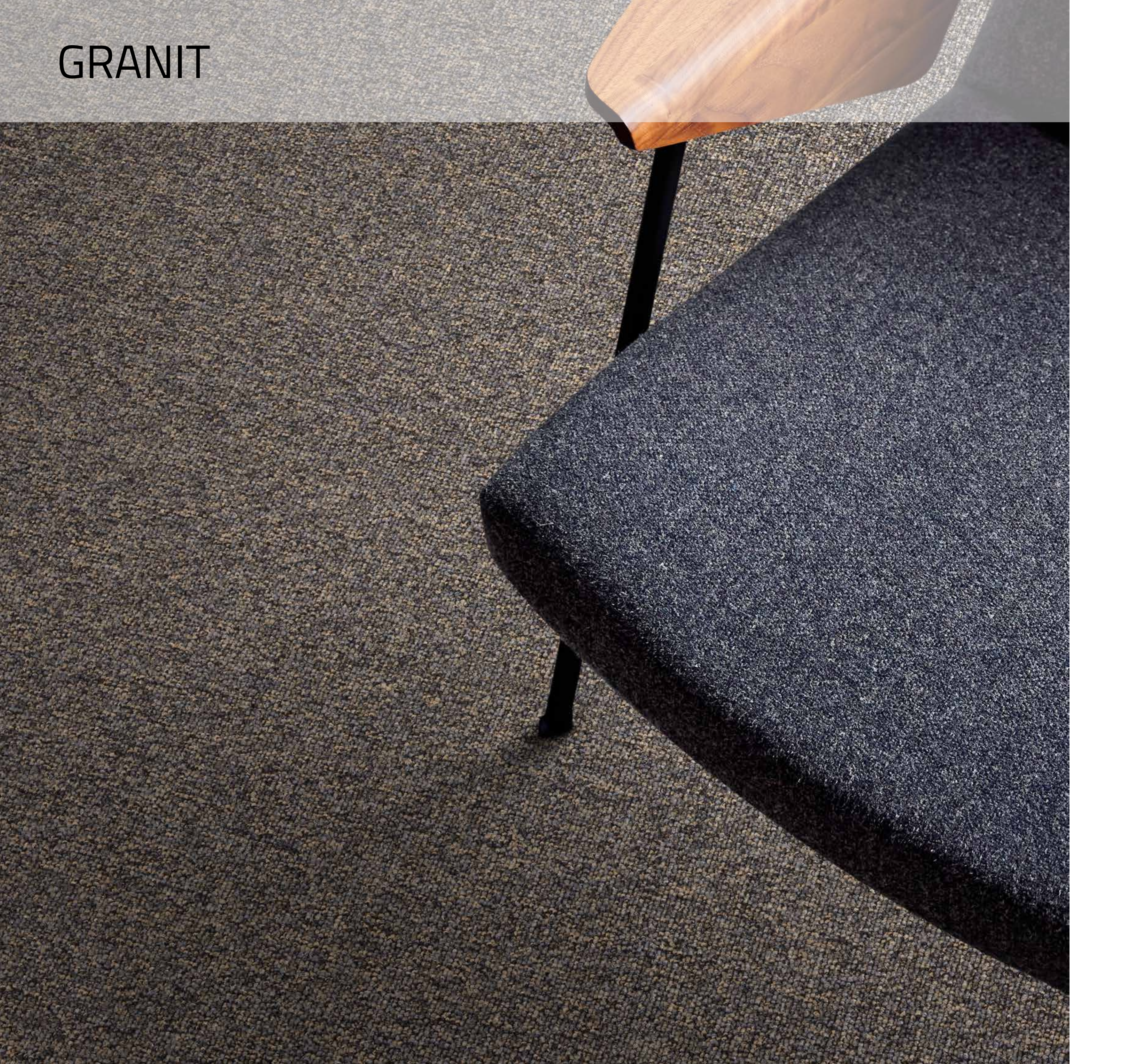


SB: GRT.0270 | 400 cm, 500 cm

GRANIT



GRANIT



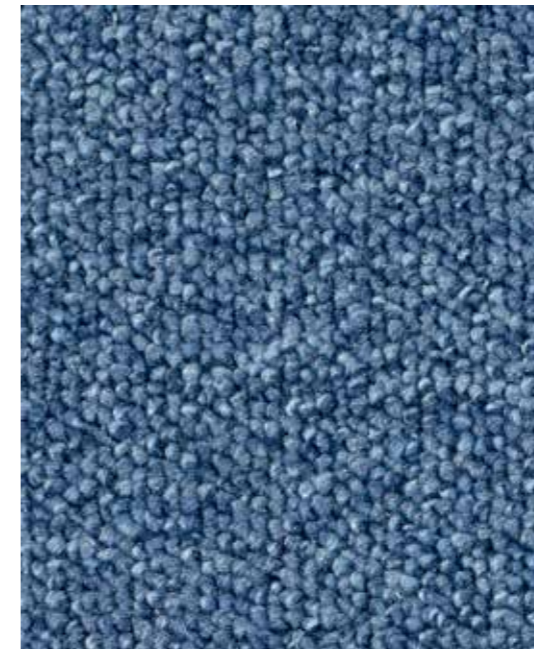
GRANIT



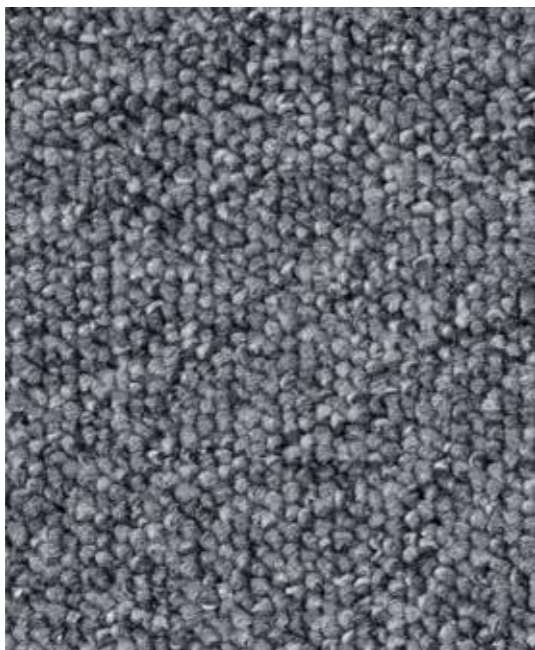
SB: GRT.0842 | 400 cm, 500 cm



SB: GRT.0764 | 400 cm, 500 cm



SB: GRT.0730 | 400 cm, 500 cm



SB: GRT.0820 | 400 cm, 500 cm



SB: GRT.0827 | 400 cm, 500 cm



SB: GRT.0700 | 400 cm, 500 cm



SB: GRT.0680 | 400 cm, 500 cm



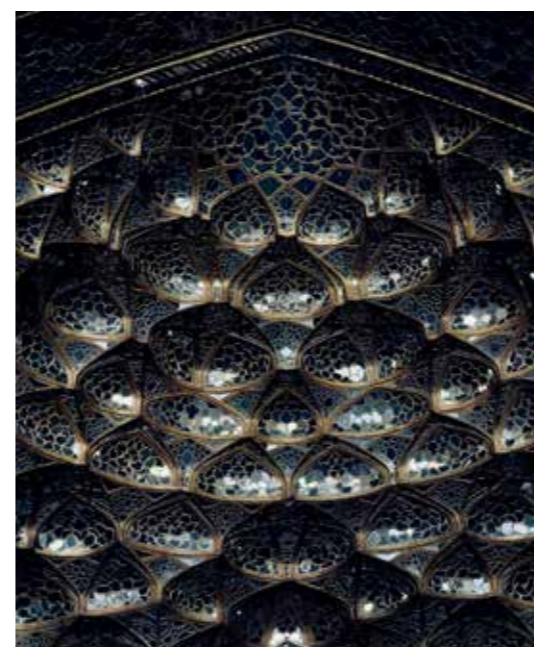
SB: GRT.0858 | 400 cm, 500 cm



SB: GRT.0570 | 400 cm, 500 cm



SB: GRT.0843 | 400 cm, 500 cm



SB: GRT.0793 | 400 cm, 500 cm



MATRIX L



BB: MAL.0870 | 50x50 cm



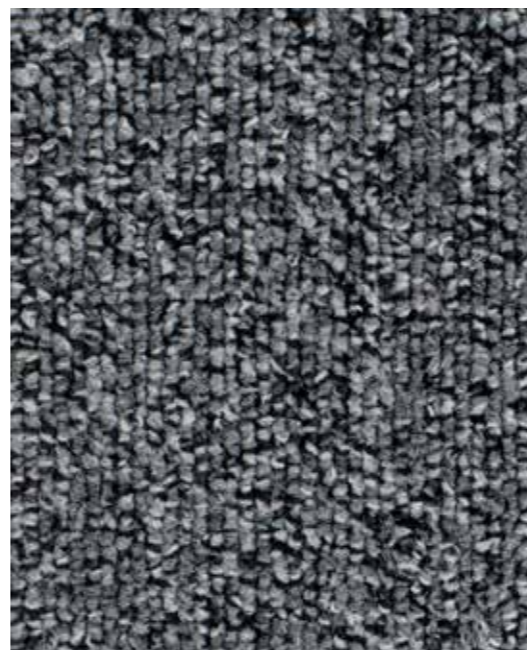
BB: MAL.0430 | 50x50 cm



BB: MAL.0410 | 50x50 cm



BB: MAL.0850 | 50x50 cm



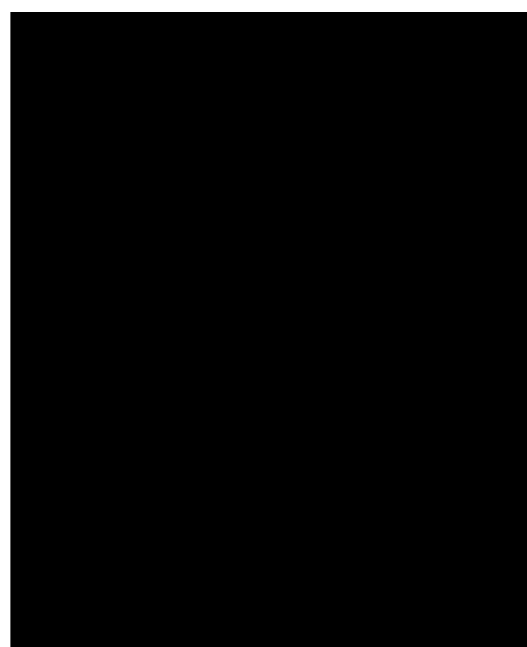
BB: MAL.0820 | 50x50 cm



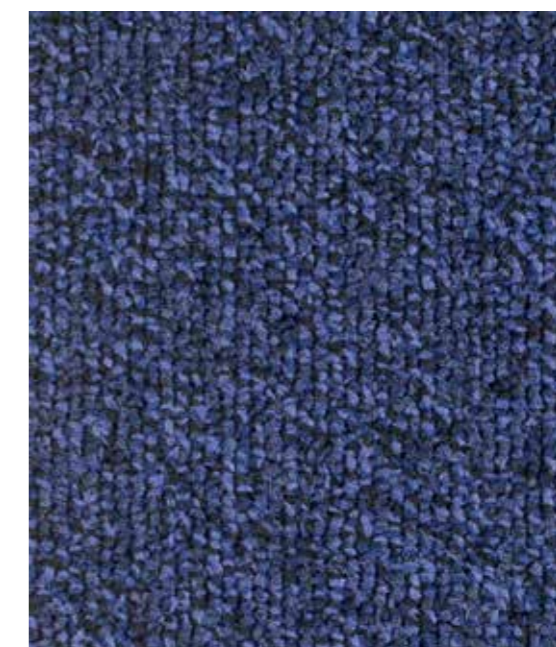
BB: MAL.0810 | 50x50 cm



BB: MAL.0800 | 50x50 cm



B BACK



BB: MAL.0700 | 50x50 cm

REACH
The new EU chemicals legislation

A+

Bfl-s1

PA

RECONYL

CE
EN 14041
DOP-1038-130646
NB 24 11

GUT
CC3AD9BA
www.gut-prods.eu

ISO 9001

Secondary Backing B Back
Rugtype • Envers • Rücken • Sottofondo

Manufacturing process tufted, 1/10" loop pile tiles
Fabricagemethode • Technique de fabrication
Herstellungsort • Tecnica di fabbricazione

Pile composition PA ECONYL
Pool Samenstelling • Nature du velours
Polmaterial • Composizione felpa

Width ± 50 x 50 cm
Breedte • Largeur • Breite • Altezza

Effective pile height ± 2,4 mm
Nuttige poolhoogte • Hauteur de velours utile
Tatsächliche Florhöhe • Spessore felpa utile

Total height ± 5,7 mm
Totale dikte • Hauteur totale • Gesamthöhe • Spessore totale

Pile weight/sqm ± 480 gr
Poolinzetgewicht/m² • Poids mis en oeuvre/m²
Poleinsatzgewicht/m² • Peso felpa/mq

Total weight/m² ± 4.040 gr
Totaal gewicht/m² • Poids total/m²
Gesamtgewicht/m² • Peso totale/mq

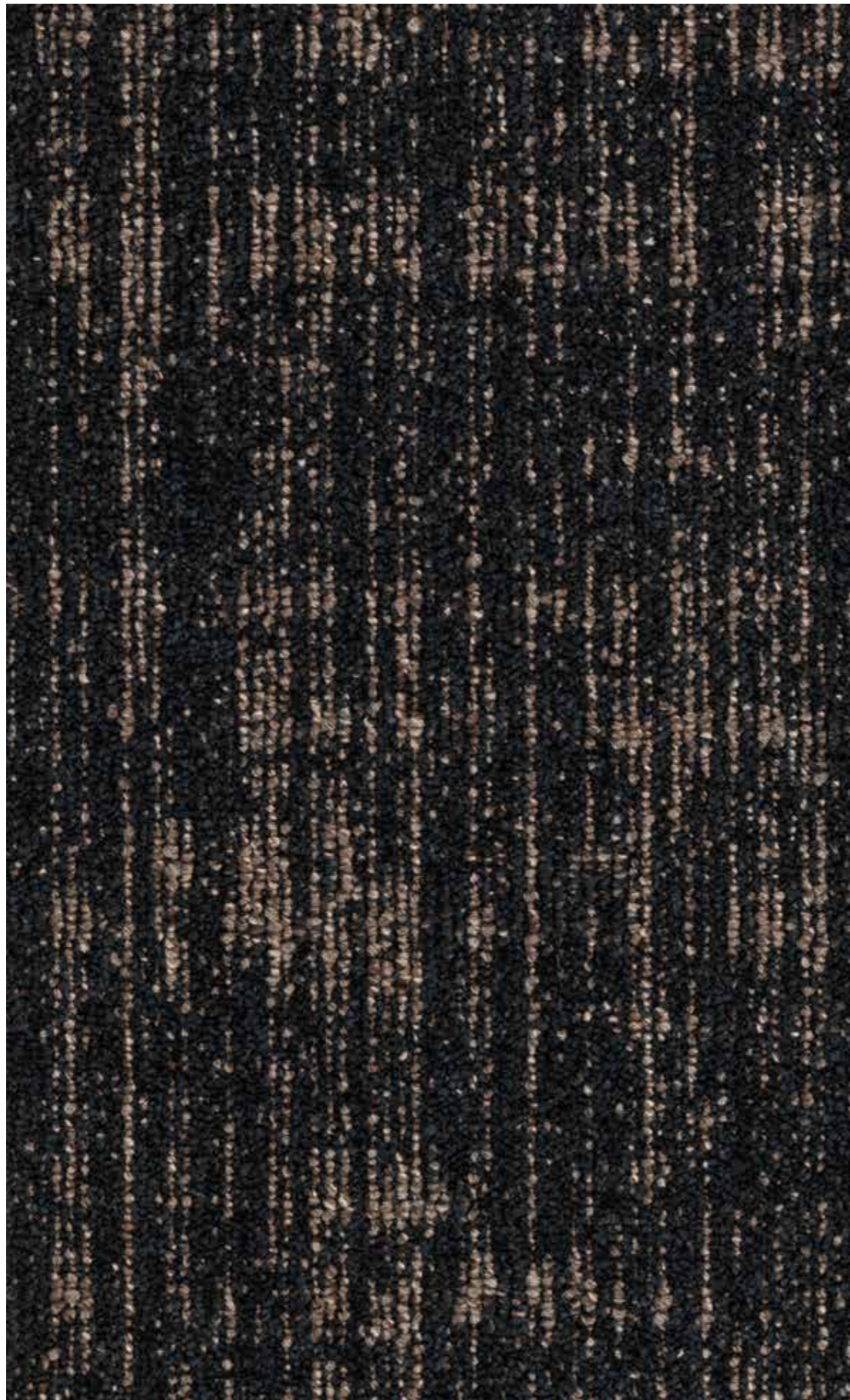
MATRIX L



MATRIX 0



MATRIX 0



BB: MAO.0410 | 50x50 cm



BB: MAO.0800 | 50x50 cm



BB: MAO.0700 | 50x50 cm



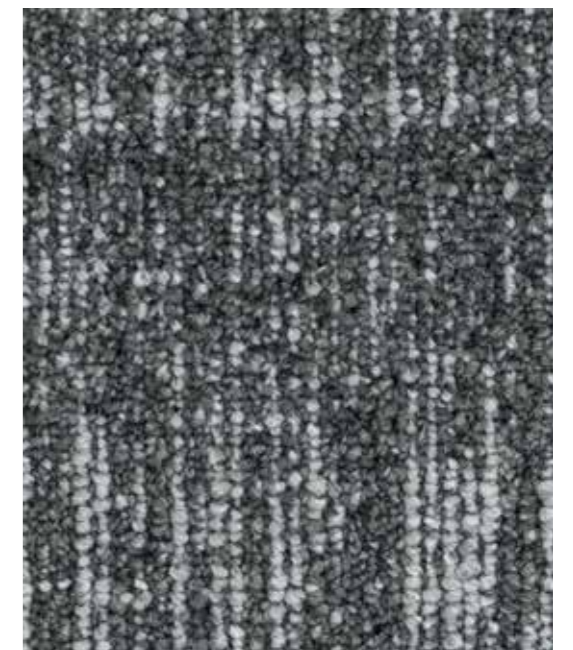
BB: MAO.0260 | 50x50 cm



BB: MAO.0430 | 50x50 cm



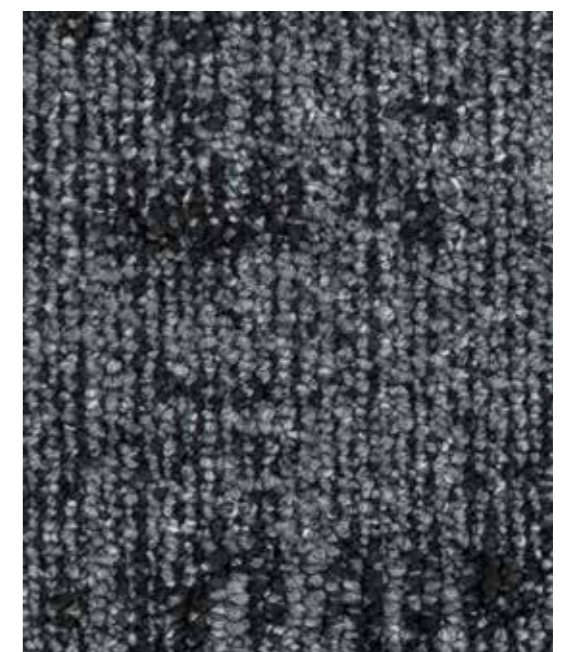
BB: MAO.0870 | 50x50 cm



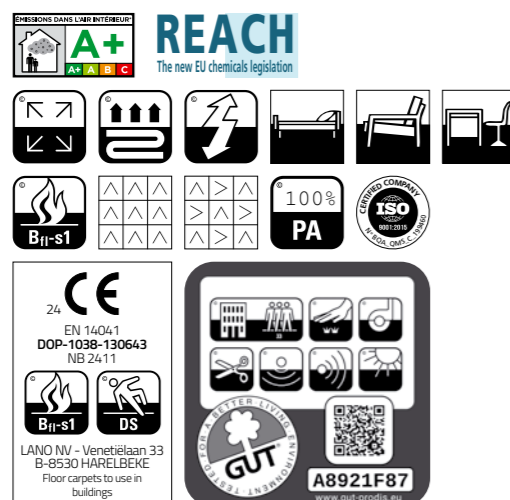
BB: MAO.0850 | 50x50 cm



B BACK



BB: MAO.0820 | 50x50 cm

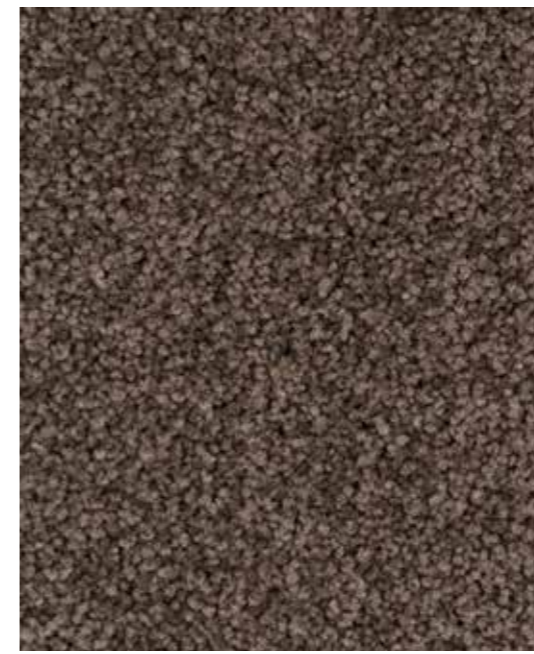


Secondary Backing B Back
 Rugtype • Envers • Rücken • Sottofondo
Manufacturing process tufted, 1/10" crossover loop pile tiles
 Fabricagemethode • Technique de fabrication
 Herstellungsart • Tecnica di fabbricazione
Pile composition PA
 Poolsamenstelling • Nature du velours
 Polmaterial • Composizione felpa
Width ± 50 x 50 cm
 Breedte • Largeur • Breite • Altezza
Effective pile height ± 3,3 mm
 Nuttige poolhoogte • Hauteur de velours utile
 Tatsächliche Florhöhe • Spessore felpa utile
Total height ± 6,8 mm
 Totale dikte • Hauteur totale • Gesamthöhe • Spessore totale
Pile weight/sqm ± 780 gr
 Poolinzetgewicht/m² • Poids mis en oeuvre/m²
 Poleinsatzgewicht/m² • Peso felpa/mq
Total weight/m² ± 4.750 gr
 Totaal gewicht/m² • Poids total/m²
 Gesamtgewicht/m² • Peso totale/mq

MATRIX S



BB: MAS.0430 | 50x50 cm



BB: MAS.0280 | 50x50 cm



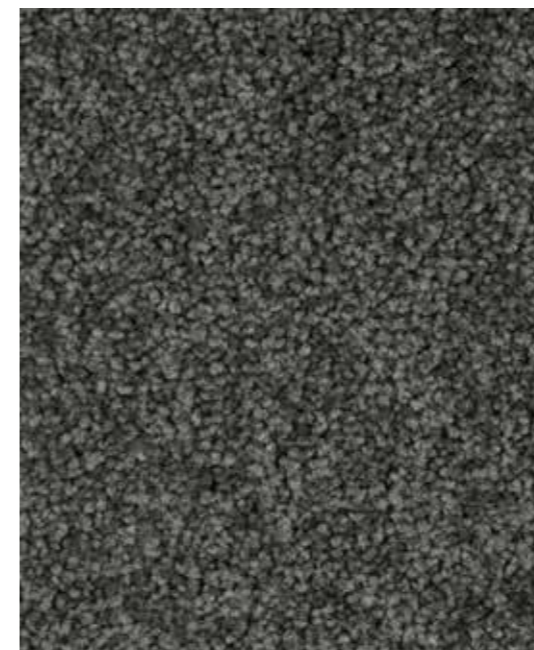
BB: MAS.0110 | 50x50 cm



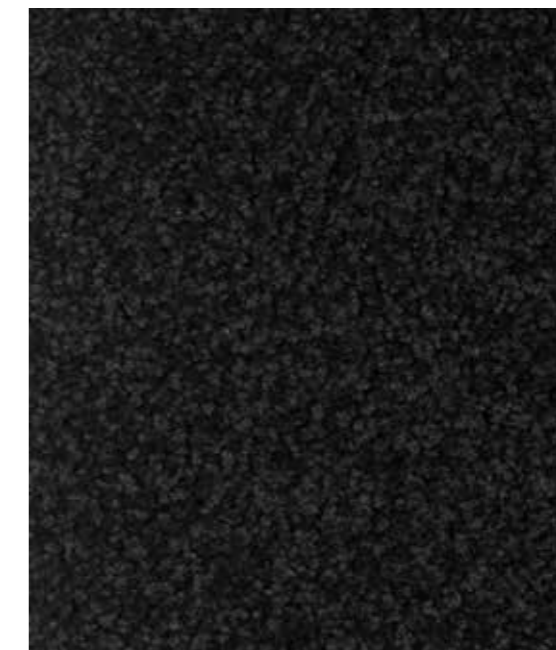
BB: MAS.0260 | 50x50 cm



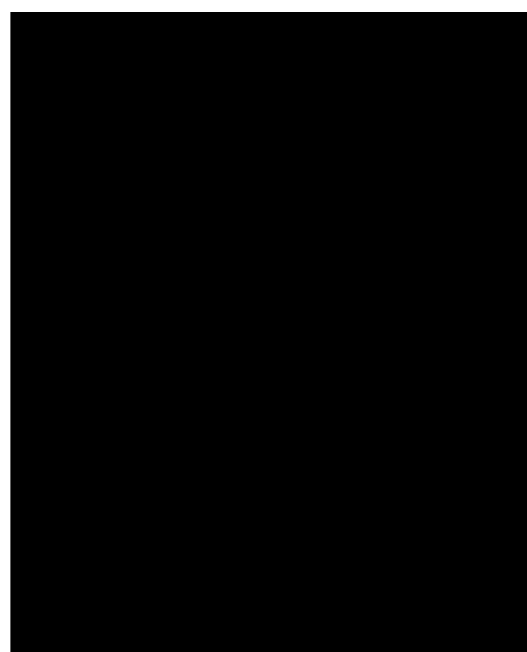
BB: MAS.0870 | 50x50 cm



BB: MAS.0820 | 50x50 cm



BB: MAS.0800 | 50x50 cm



B BACK



BB: MAS.0700 | 50x50 cm

REACH
The new EU chemicals legislation

A+ **CE**
EN 14041
DOP-1038-130645
NB 24 11

Bfl-s1 **PA** **RECONYL**

ISO
9001

GUT
9FC2704F
www.gut-prodix.eu

Secondary Backing B Back
Rugtype • Envers • Rücken • Sottofondo

Manufacturing process tufted, 1/10" saxony tiles
Fabricagemethode • Technique de fabrication
Herstellungsort • Tecnica di fabbricazione

Pile composition PA ECONYL
Pool samenstelling • Nature du velours
Polmaterial • Composizione felpa

Width ± 50 x 50 cm
Breedte • Largeur • Breite • Altezza

Effective pile height ± 5,8 mm
Nuttige poolhoogte • Hauteur de velours utile
Tatsächliche Florhöhe • Spessore felpa utile

Total height ± 8,7 mm
Totale dikte • Hauteur totale • Gesamthöhe • Spessore totale

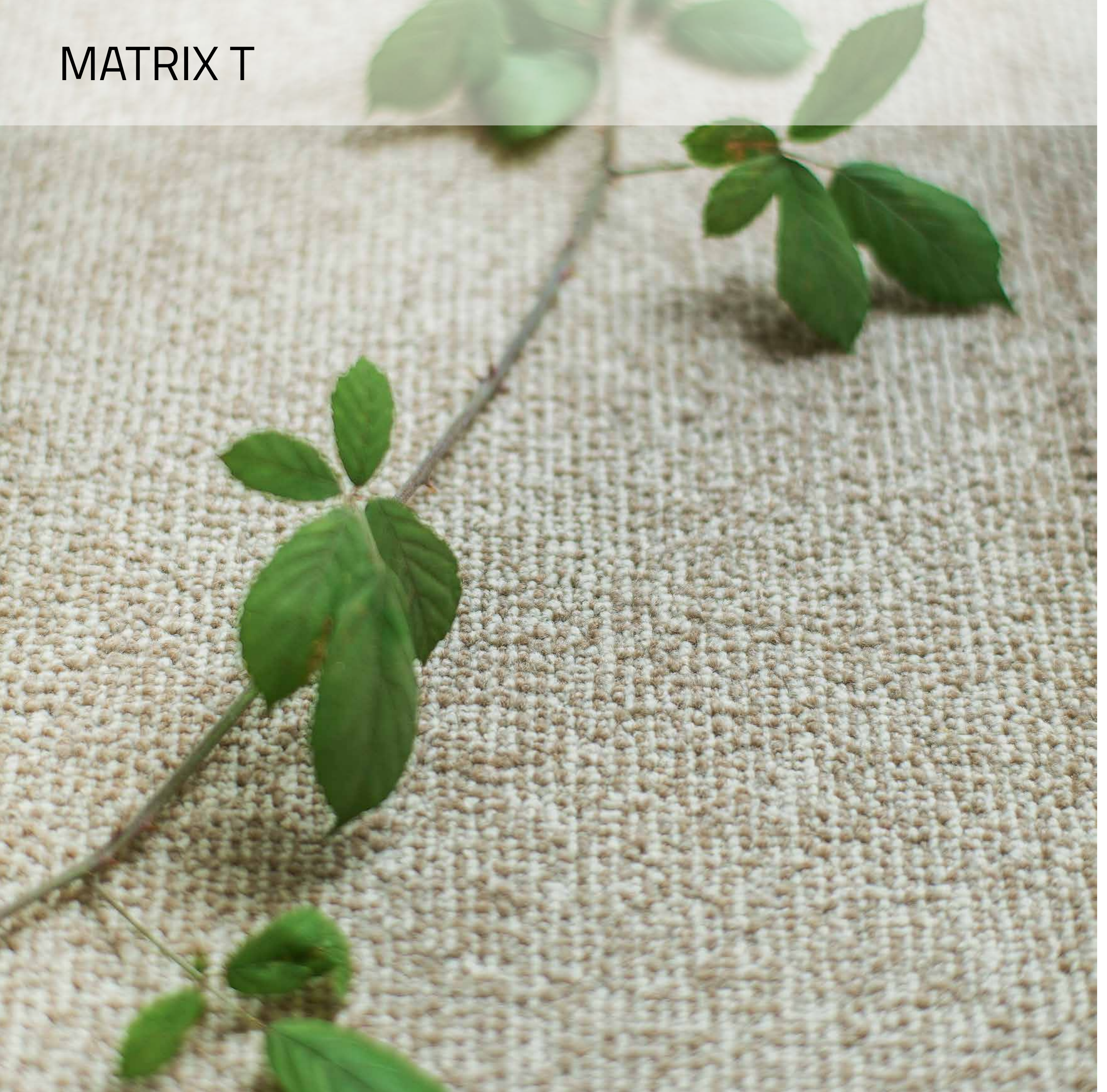
Pile weight/sqm ± 1.100 gr
Poolinzetgewicht/m² • Poids mis en oeuvre/m²
Poleinsatzgewicht/m² • Peso felpa/mq

Total weight/m² ± 4.920 gr
Totaal gewicht/m² • Poids total/m²
Gesamtgewicht/m² • Peso totale/mq

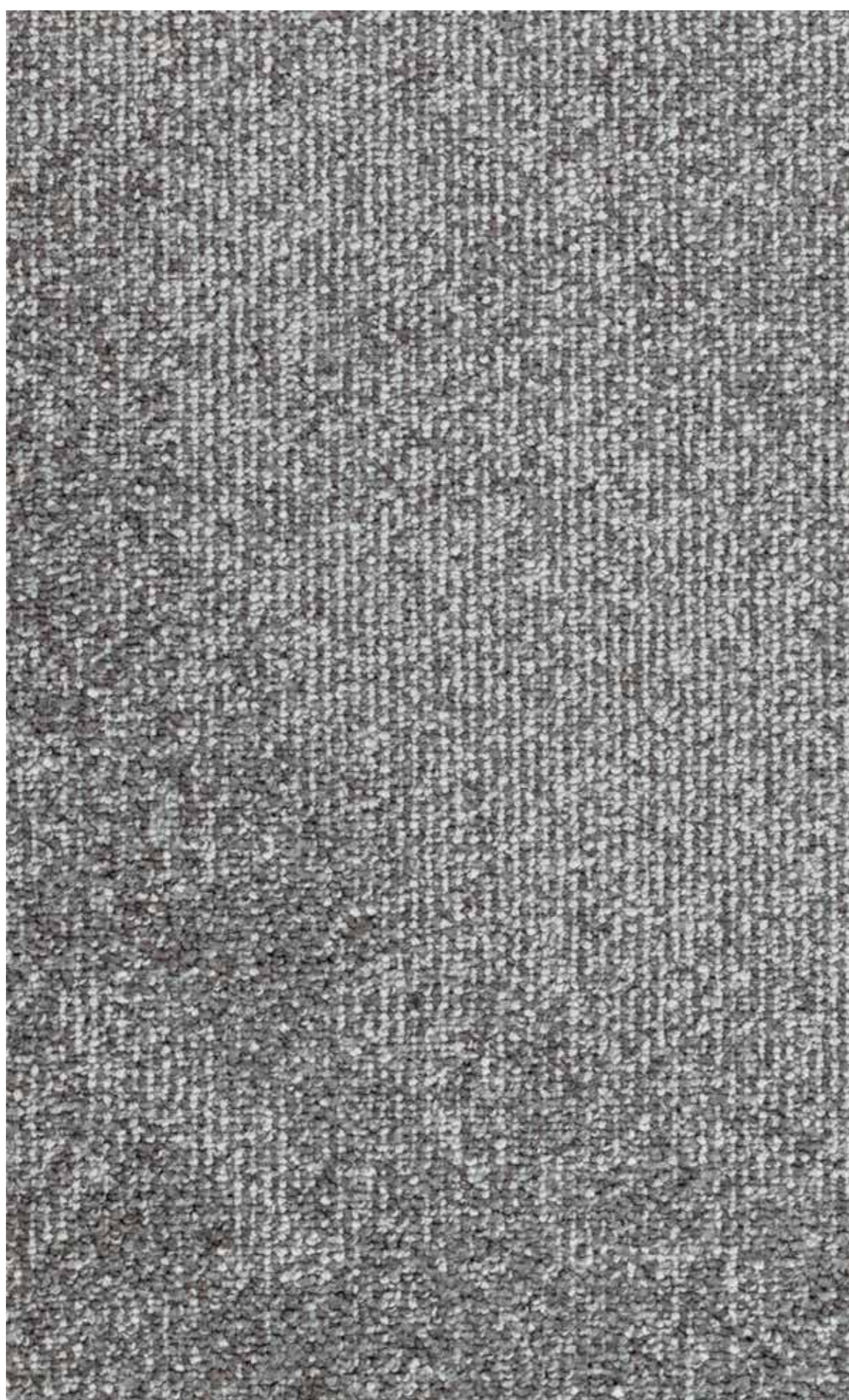
MATRIX S



MATRIX T



MATRIX T



BB: MAT.0860 | 50x50 cm



BB: MAT.0850 | 50x50 cm



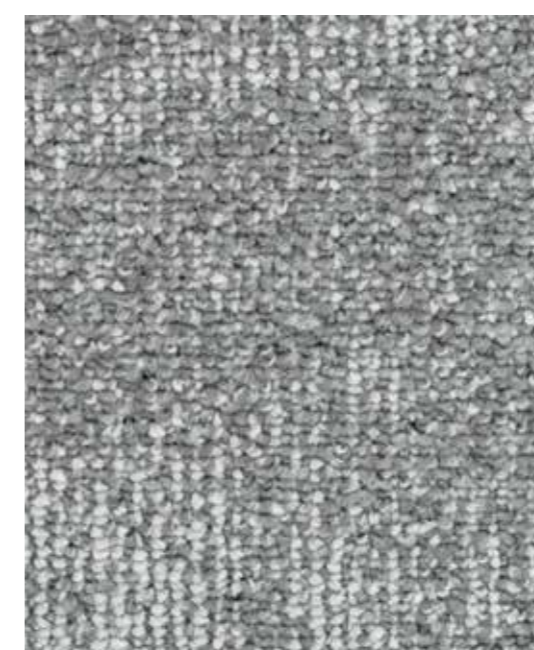
BB: MAT.0810 | 50x50 cm



BB: MAT.0400 | 50x50 cm



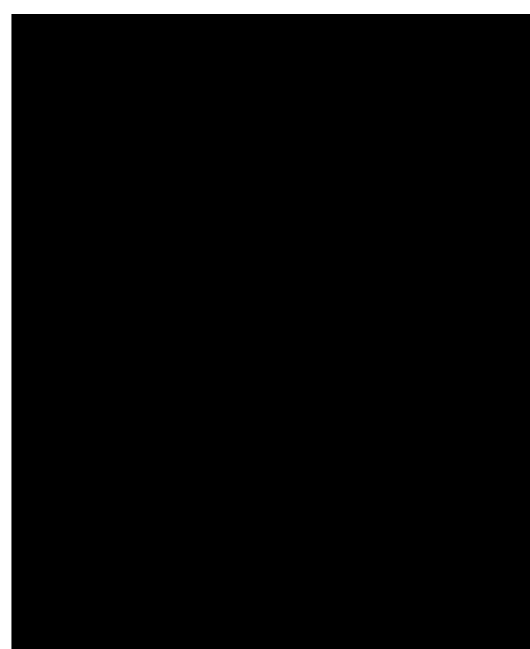
BB: MAT.0820 | 50x50 cm



BB: MAT.0870 | 50x50 cm



BB: MAT.0430 | 50x50 cm



B BACK



BB: MAT.0410 | 50x50 cm

REACH
The new EU chemicals legislation

A+ **AT** **AC** **AD** **AE** **AF** **AG** **AH** **AI** **AJ** **AK** **AL** **AM** **AN** **AO** **AP** **AQ** **AR** **AS** **AT** **AV** **AW** **AX** **AY** **AZ**

Bfl-s1 **PA** **ECONYL** **ISO**

CE
24
EN 14061
DOP-1038-130644
NB 2411

GUT
245EF110
www.gut-prod.es

Secondary Backing B Back
Rugtype • Envers • Rücken • Sottofondo

Manufacturing process tufted, 1/12" loop pile tiles
Fabricagemetode • Technique de fabrication
Herstellungsart • Tecnica di fabbricazione

Pile composition PA ECONYL
Poolisamenstelling • Nature du velours
Polmaterial • Composizione felpa

Width ± 50 x 50 cm
Breedte • Largeur • Breite • Altezza

Effective pile height ± 3,4 mm
Nuttige poolhoogte • Hauteur de velours utile
Tatsächliche Florhöhe • Spessore felpa utile

Total height ± 6,8 mm
Totale dikte • Hauteur totale • Gesamthöhe • Spessore totale

Pile weight/sqm ± 770 gr
Poolinzetgewicht/m² • Poids mis en oeuvre/m²
Poleinsatzgewicht/m² • Peso felpa/mq

Total weight/m² ± 4.365 gr
Totaal gewicht/m² • Poids total/m²
Gesamtwegicht/m² • Peso totale/mq

PILOTIS²

lano carpets for contract

Carve Classic



Minerva



Matrix L



Carve Linea



Miri



Matrix O



Granit



Square



Matrix S



Lotus



Zen



Matrix T

