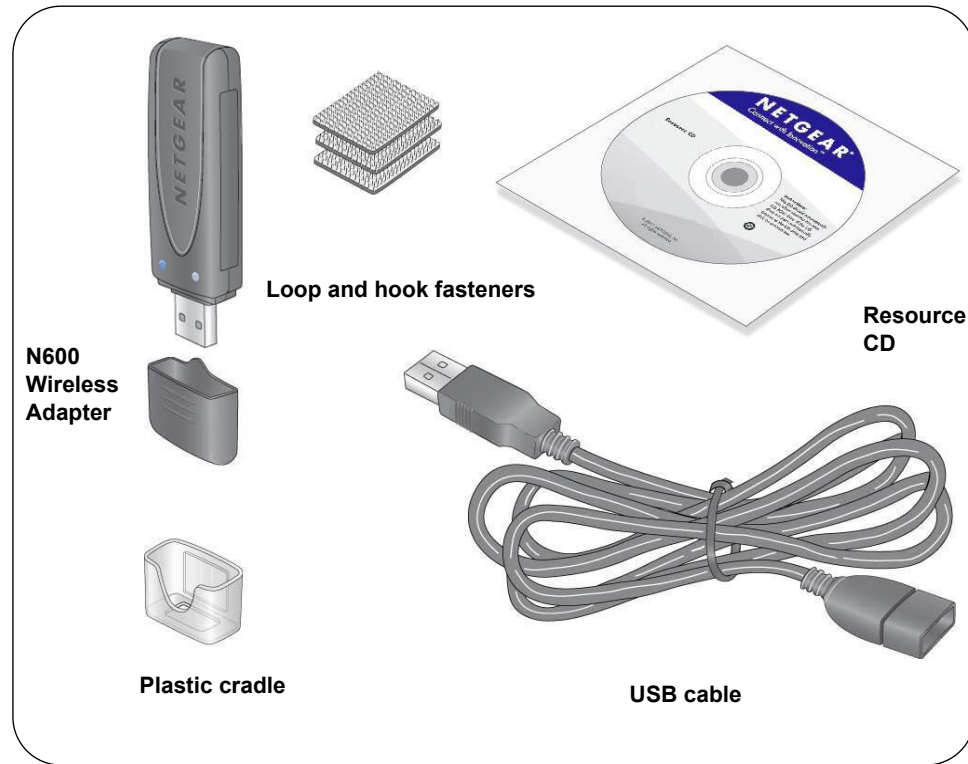


### N600 Wireless Dual Band USB Adapter WNDA3100v2

## Package Contents



## Installation

Estimated completion time: 10 minutes.

1. Insert the *Resource CD* in your computer's CD drive. If the CD main screen does not display, browse the files on the CD and double-click **Autorun.exe**.

2. Click **Setup**.

The Software Update Check screen displays.

3. If you are connected to the Internet, click **Check for Updates**. If not, then click **Install from CD**.

4. Click **I agree** to accept the license agreement and then click **Next**.

A message displays asking you to wait while software is installed. This might take a few minutes. Then you are prompted to insert your adapter.

5. Either insert the adapter into a USB port on your computer, or use the USB cable and adapter cradle provided to connect the adapter.

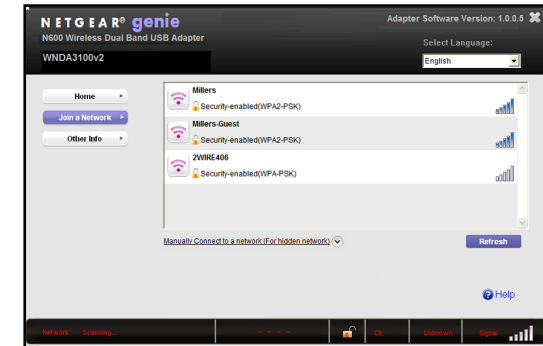
The USB cable and adapter cradle can extend the range of your adapter and improve wireless reception. Insert the adapter in the cradle and attach the USB cable to the computer.

**Note:** For best results, put the wireless adapter at least 4 feet (1 meter) away from your router.

6. Click **Next**.



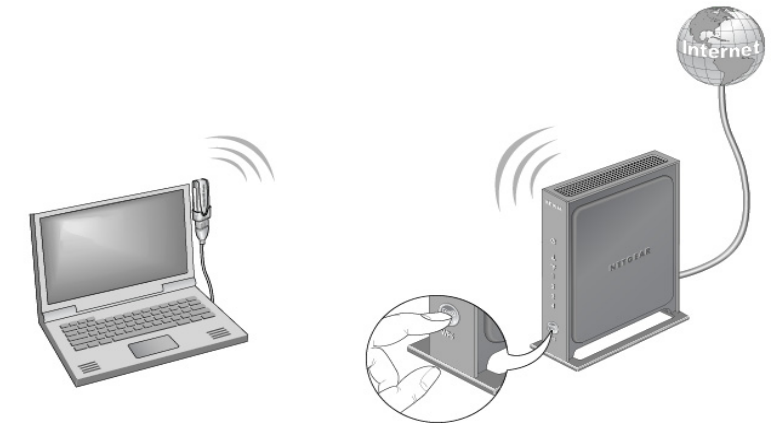
7. NETGEAR Genie displays a list of wireless networks in your area.



## Join a Wireless Network

You can join a wireless network from this NETGEAR Genie screen, or you can use Wi-Fi Protected Setup (WPS) if your wireless network supports it.

- **NETGEAR Genie:** Click your wireless network to select it from the list, and then click **Connect**. If the network is secure, enter its password or network key.
- **WPS:** Press and hold the **WPS** button on the side of the adapter for 2 seconds. Within 2 minutes, press the **WPS** button on your wireless router or gateway.



The adapter joins the network, which can take a few minutes. Your settings are saved in a profile.

## NETGEAR Genie Icon

When you install your adapter, the NETGEAR Genie icon displays in the Windows system tray and on the desktop. You can double-click this icon to open NETGEAR Genie to make changes or connect to a different wireless network. The color of the icon indicates the strength of your wireless connection from 0 (zero) to 5 bars.



Green: 3 to 5 bars



Yellow: 1 or 2 bars



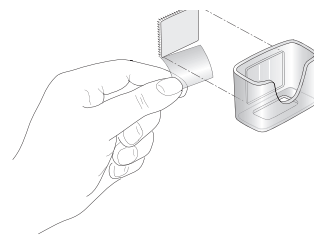
Red: 0 (zero) bars, indicating no connection

If you remove your adapter, NETGEAR Genie is not available, so the icon does not display. If you insert the adapter again, the icon returns.

## USB Cable and Cradle

You can use the USB cable and plastic cradle to place the adapter in a location that will extend its range and obtain better wireless reception.

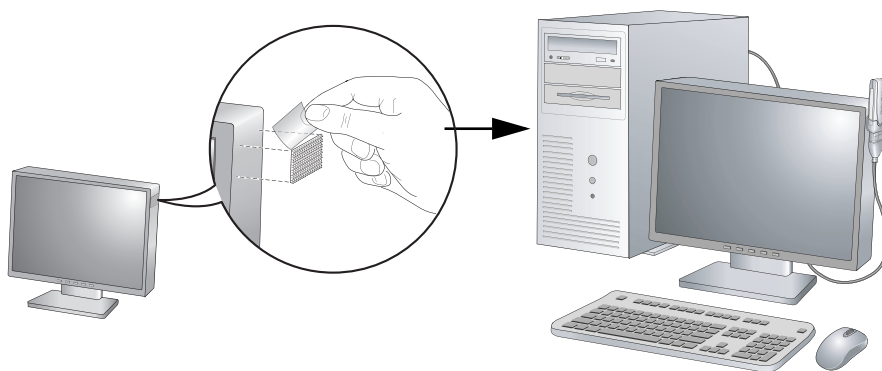
1. Three fasteners come in the package. Locate the one with a prickly side, peel off the plastic film, and stick it on the back of the plastic cradle.



2. Insert the adapter in the plastic cradle.
3. Connect the USB cable.



4. Place one of the other fasteners on the side or back of your monitor near the top for better reception.
5. Then join the fasteners.



## Technical Support

Thank you for selecting NETGEAR products.

After installing your device, locate the serial number on the label of your product, and use it to register your product at <http://www.NETGEAR.com/register>. Registration is required before you can use the telephone support service. Registration through the NETGEAR website is strongly recommended.

Go to <http://support.netgear.com> for product updates and web support.

For additional information about setting up, configuring, and using your USB Wireless Adapter, see the *User Manual*.

For complete DoC, visit the NETGEAR EU Declarations of Conformity website at [http://support.netgear.com/app/answers/detail/a\\_id/11621/](http://support.netgear.com/app/answers/detail/a_id/11621/)

For GNU General Public License (GPL) related information, please visit [http://support.netgear.com/app/answers/detail/a\\_id/2649](http://support.netgear.com/app/answers/detail/a_id/2649).



Este equipamento opera em caráter secundário, isto é, não tem direito a proteção contra interferência prejudicial, mesmo de estações do mesmo tipo, e não pode causar interferência a sistemas operando em caráter primário."



This symbol was placed in accordance with the European Union Directive 2002/96 on the Waste Electrical and Electronic Equipment (the WEEE Directive). If disposed of within the European Union, this product should be treated and recycled in accordance with the laws of your jurisdiction implementing the WEEE Directive.



201-14273-02



November 2011

©2011 by NETGEAR, Inc. All rights reserved. NETGEAR, the NETGEAR logo, and Connect with Innovation are trademarks or registered trademarks of NETGEAR, Inc. and/or its subsidiaries in the United States and/or other countries. Information is subject to change without notice. Other brand and product names are trademarks or registered trademarks of their respective holders.