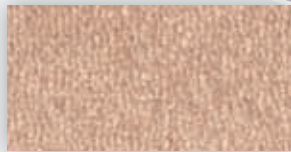




BAMBOO



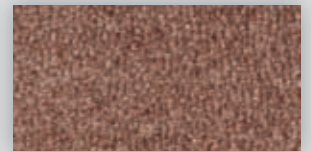
▲ KT: BAM.250



▲ KT: BAM.230



▲ KT: BAM.220



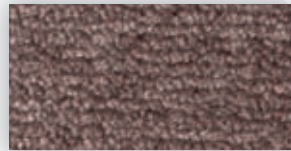
▲ KT: BAM.200



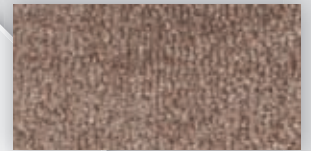
▲ KT: BAM.870



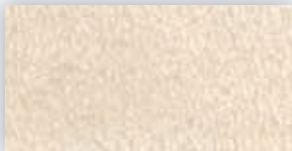
▲ KT: BAM.850



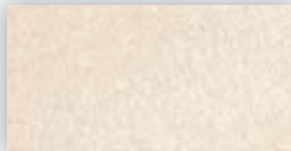
▲ KT: BAM.290



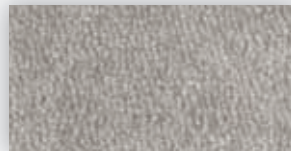
▲ KT: BAM.210



▲ KT: BAM.240



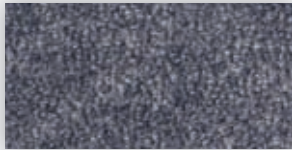
▲ KT: BAM.440



▲ KT: BAM.880



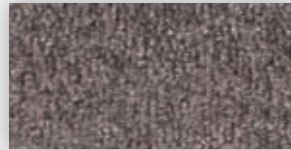
▲ KT: BAM.860



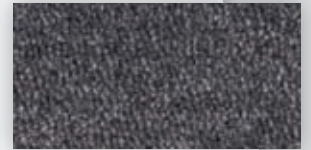
▲ KT: BAM.770



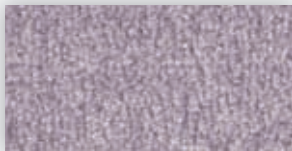
▲ KT: BAM.780



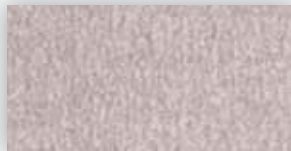
▲ KT: BAM.010



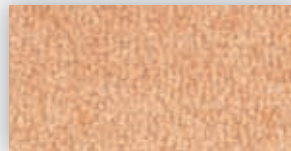
▲ KT: BAM.810



▲ KT: BAM.020



▲ KT: BAM.040



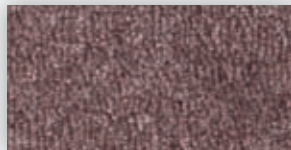
▲ KT: BAM.340



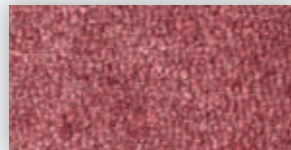
▲ KT: BAM.330



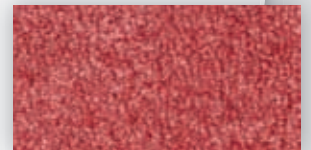
▲ KT: BAM.750



▲ KT: BAM.080



▲ KT: BAM.120



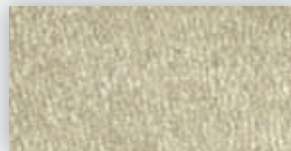
▲ KT: BAM.110



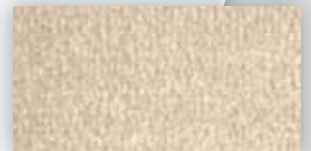
▲ KT: BAM.650



▲ KT: BAM.660



▲ KT: BAM.640



▲ KT: BAM.450

BAMBOO

lano carpets residential

Fabricagemethode Technique de fabrication Manufacturing process Herstellungsort Tecnica di fabbricazione	tufted, 1/10" saxony	Poolsamenstelling Nature du velours Pile composition Polmaterial Composizione felpa	40% BAMBOO 60% PA	Tuftdoek Premier dossier Primary backing Trägermaterial Tela di supporto	woven	Rugtype Envers Secondary backing Rücken Sottofondo	KT
Totale dikte Hauteur totale Total height Gesamthöhe Spessore totale	± 8,0 mm	Nuttige poolhoogte Hauteur de velours utile Effective pile height Tatsächliche Florhöhe Spessore felpa utile	± 5,4 mm	Breedte Largeur Width Breite Altezza	± 400 cm	Aantal noppen/m ² Nombre de points/m ² Number of knots/sqm Noppenzahl/m ² Numero di punti/mq	± 275800
Poolinzetgewicht/m ² Poids mis en oeuvre/m ² Pile weight/sqm Poleinsatzgewicht/m ² Peso felpa/mq	± 870 gr	Totaal gewicht/m ² Poids total/m ² Total weight/sqm Gesamtgewicht/m ² Peso totale/mq	± 2010 gr	EN 13501-1 Brandgedrag Comportement au feu Fire behaviour Brennverhalten Reazione al fuoco	D_{fl}-s1	EN 1307-2004 Classificatie Classification Classification Klassifizierung Classificazione	Class 22 Domestic Medium
DIN 52612 Warmtedoorlaatweerstand Résistivité thermique Thermal retention Wärmedurchlaßwiderstand Resistenza termica	± 0,071 m²/kW	TOG rating	± 0,71	ISO 6356 2000 Teil 2: Permanent antistatisch Antistatique permanent Permanently antistatic Permanent antistatisch Antistatico permanente	< 2 kV	ISO 6356 2000 Teil 6: Oppervlakteweerstand RoT Résistance horizontale RoT Surface resistance RoT Oberflächenwiderstand RoT Resistenza in superficie Rot	≤ 10¹¹ Ω
ISO 10965 1999 Teil 6: Doorgangswaerstand RdT Résistance transversale RdT Vertical resistance RdT Durchgangswiderstand RdT Resistenza ai passaggi RdT	≤ 10¹⁰ Ω	ISO 105 B02 2000 Lichtechtheid Solidité à la lumière Lightfastness Lichtechtheid Solidità colori alla luce	≥ 6-7	ISO 105 E01 2002 Waterrechtheid verkleuring Solidité à l'eau changement couleur Waterfastness change in colour Wasserechtheit Änderung der Farbe Solidità colori all'acqua cambio colore	≥ 4-5	ISO 105 E01 2002 Waterrechtheid uitbloeding Solidité à l'eau dégorgement Waterfastness staining Wasserechtheit anblüten Solidità colori all'acqua sfumatura colore	≥ 4-5
ISO 105 X12 2001 Wrijfechtheid droog Solidité au frottement sec Rubbingfastness dry Reibungechtheit trocken Solidità colori allo sfregamento a secco	≥ 4-5	ISO 105 X12 2001 Wrijfechtheid nat Solidité au frottement humide Rubbingfastness wet Reibungechtheit nass Solidità colori allo sfregamento umido	≥ 4-5				

(±) These details are approximate. Complete specification details and associated certificates together with tolerances applying to the above can be provided upon request. We reserve the right to improve technical specifications without prior notice. Due to method of manufacture perfect pattern and/or colour matching cannot be guaranteed. In cut-pile carpeting, in rare cases, shading/pile reversal may occur without affecting its fitness for use. Shading/pile reversal can not be considered as a manufacturing or a material defect and will not affect the durability of the carpet. For other languages see: www.lano.com

U₃P₃E₁C₀ 04/052



Lano
Zuidstraat 44
8530 Harelbeke-Belgium
t +32-56-65 40 00
f +32-56-65 40 09
marketing@lano.be
www.lano.com

