

Product Reference for the Specifier



What makes an Amtico Floor Unique?

Is it our pure practicality, sheer durability or total individuality that sets us apart?

One thing is for sure, we have occupied an enviable position in the prestige flooring market for over thirty seven years, resulting in an international flooring brand that now graces the floors of commercial properties and homes across the world.

This brochure will guide you through the immense possibilities of the different Amtico product ranges. It will show you what can be achieved from simple to spectacular effects, and give further advice on products and design options at every stage.

Last, but not least, it will open your eyes to the beautiful world of Amtico.



We manufacture our entire range of products in two factories and six cutting stations across the world.



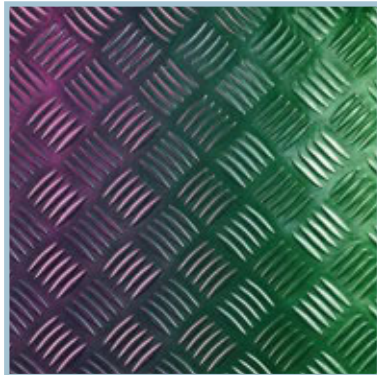
IDX 388

We lead the way in cutting technology - no matter how complex the design, we can make it happen.

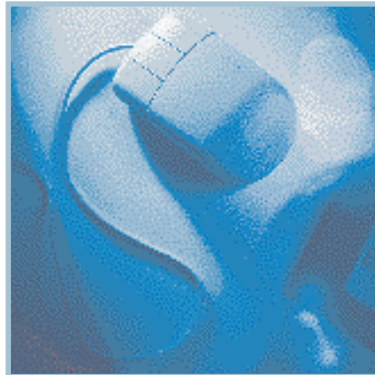


We have been flooring experts for over 38 years.

We're in Control - Every Step of the Way



We are constantly breaking new ground in product development.



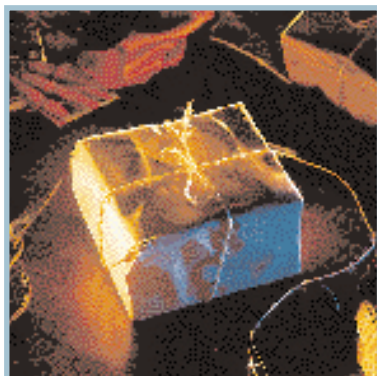
We have an international design team who will develop detailed computer drawings from your brief.



We thrive on problem solving and tight deadlines.



We pride ourselves on our fast turnaround from receipt of order to despatch - worldwide.



We provide a rapid sampling service - worldwide.



We keep maintenance simple.

Amtico in the Commercial World 2

Spectacular Effects and Custom-Made Designs 4

Find a Product

Couture 8

Special Effects 13

Metallics 14

Woods 16

Stones 20

Customised Terrazzo 20

Marbles 22

Mosaics 23

Granites and Ceramics 24

Accent Colours 25

Designs & Features

Feature Tiles 26

Standard Designs 28

Borders 32

Motifs 36

Information

Installation 38

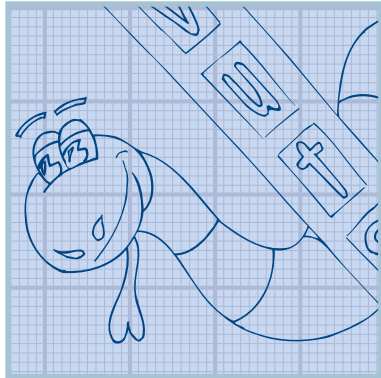
Maintenance 39

Specification & Technical Data 40

Contact Us 41

Please Note: Due to the limitations of colour reproduction, it is advisable to always refer to a product sample.

Amtico in the Commercial World



Our specialist designers will work with you to create exactly the floor you want.



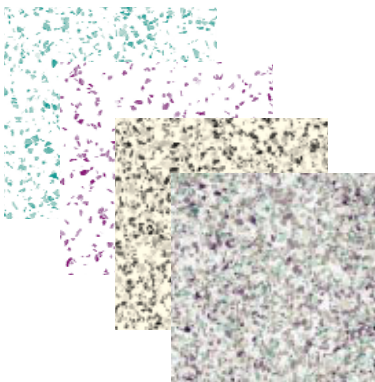
Over 75% of our customers are repeat purchasers.



In all standard tests for wear, Amtico comes top in its category.



Over 300 products in the Amtico range.



We can create custom-made products to your exact specification.



IDX 1816

Advanced cutting technology enables us to cut any design, no matter how complex.



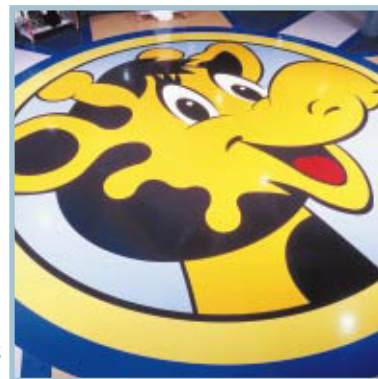
IDX 1462

Quieter and warmer than natural products - Amtico won't warp, crack, chip or splinter.



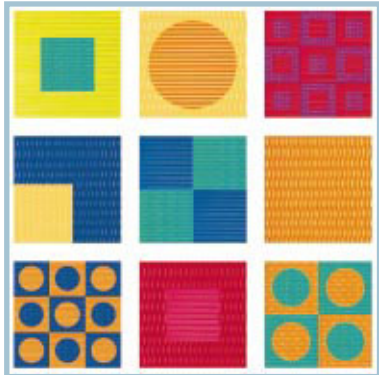
IDX 1430

Products can be combined in ways that would be completely impractical with natural materials.



IDX 948

We can create any logo or design motif, adding impact to the simplest design.



Our Couture range takes flooring into a new dimension.



IDX 1425

We keep the gauge the same, enabling our products to be mixed in any combination.



With a wear layer 1mm thick, Amtico floors are one of the most durable on the market.



We have created integrated systems with our partners in sub-floor preparation and adhesive supply.



We offer a ten year guarantee against wear-out under normal conditions.



Often quicker and easier to install than most natural products.



IDX 67

We have an international network of Studios, with knowledgeable interior designers.



We're one of the first flooring manufacturers in the world to be accredited to both ISO 9002 for quality management ...



... and ISO 14001 for our environmental management system.

Spectacular Effects & Custom-Made Designs



IDX 1663

Client The Science Museum
Location UK
Design Wilkinson Eyre

If you can imagine it, we can produce it. The Amtico Company is a pioneer in the technology of cutting high-design floors.

Curves, special shapes, custom-made patterns, even intricate typography can all be accommodated. Which means you can introduce Borders, Motifs or even your own corporate logo into your chosen flooring design.

Custom-made designs are our speciality. Which is why, with Amtico, anything is possible.



IDX 2035

Client Etam
Location UK
Design Path Design



IDX 2241

Client Te Papa Museum
Location New Zealand
Design Stapleton Architects



IDX 1591

Client Miss Selfridge
Location UK
Design Arcadia Group Plc



IDX 2240

Client NBC Studios
Location USA
Design Jeremy Conway



IDX 1846

Client	FAO Schwarz
Location	USA
Design	In-house design team



IDX 570

Client	Salon Figaro
Location	Germany
Design	Welonda



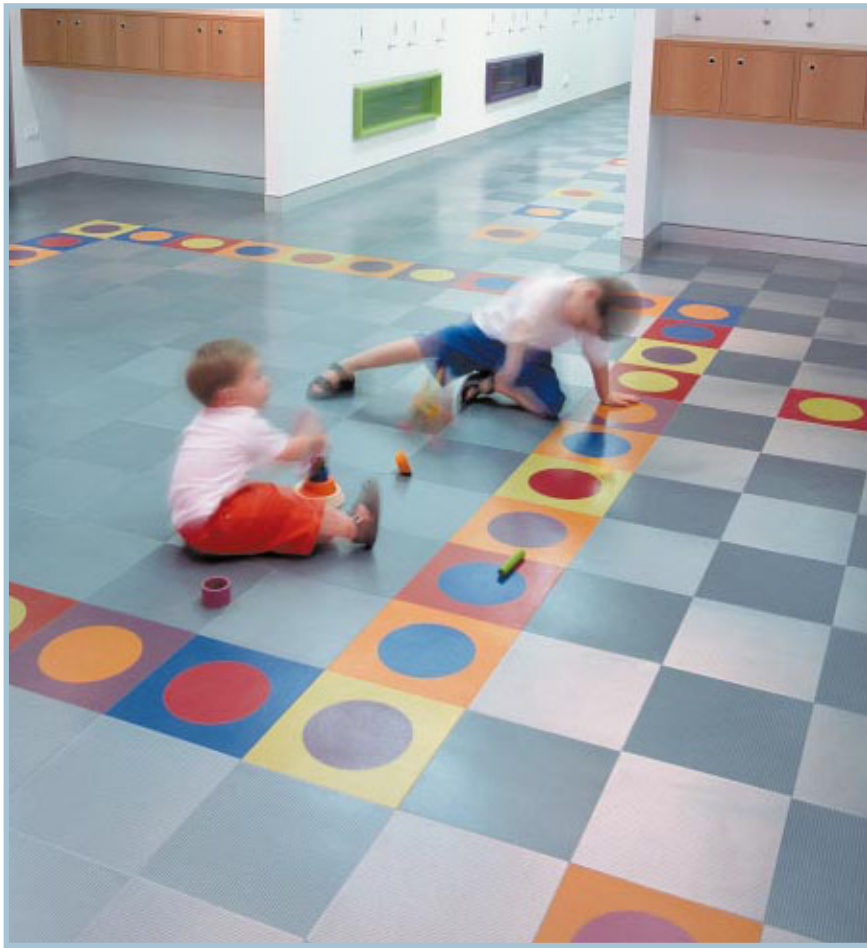
IDX 1508

Client	DPAM
Location	France
Design	Dragon Rouge



IDX 1818

Client	Wolfson Children's Hospital
Location	USA
Design	In-house design team



IDX 2203

Client	Russell Hill Centre
Location	Australia
Design	Bligh Voller Nield

Spectacular Effects & Custom-Made Designs



IDX 1414

Client	Scot UK
Location	UK
Design	Maris Interiors



IDX 1921

Client	National Space Museum
Location	UK
Design	Hayley Sharpe



IDX 2221

Client	Cardinal Glennon Hospital
Location	USA
Design	Directions in Design



IDX 2105

Client	Toys "R" Us
Location	USA
Design	Newbold Associates



IDX 1549

Client	Madame Tussaud's
Location	USA
Design	The Tussaud's Studio



IDX 1632

Client	ForestExpress
Location	USA
Design	Loia Budde & Associates



IDX 2054

Client	Karstadt
Location	Germany
Design	Interstore B. Heiden & Jordan Mozer



IDX 2242

Client	Metropolitan Health Plaza
Location	Japan
Design	Nihon Design Ltd

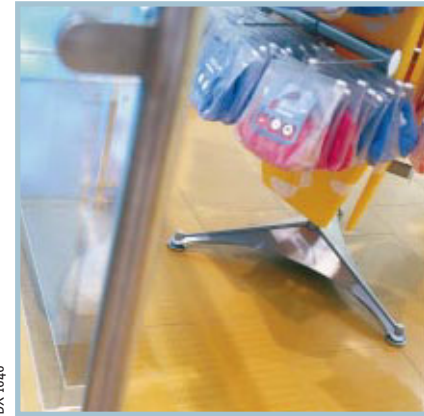


Yet again, Amtico have broken ground where others fear to tread, with a selection of amazing tiles which offer mouth-watering possibilities for the designer.

Our newest products like Colormetrics and Techno utilise innovative technology to create a unique 3 dimensional effect with a smooth surface. Many of these products also feature dramatic colour effects, which change when viewed from different perspectives.

You can combine any Couture products to make a design or use them as features to highlight a plainer floor.

You'll never look at floors in the same way again.



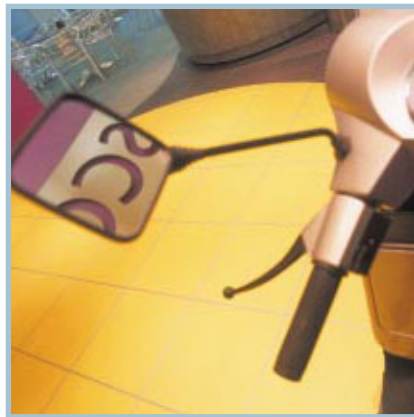
IDX 1646

JW666 Colormetrics Tangerine Wave



IDX 2048

LR31 Micro Quicksilver



IDX 1446

GZ777 Stardust Yellow
TM85 Chameleon Treadplate



IDX 2212

DP38 Zinc Stud with X-JS38 Zinc Rib Stripping



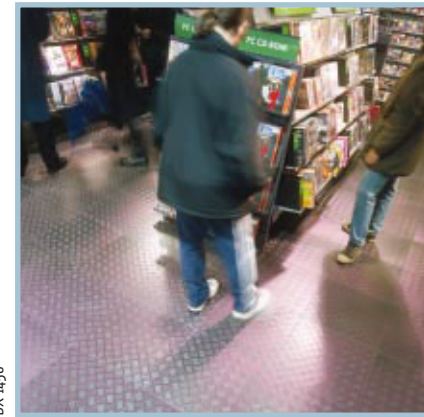
IDX 1424

GL01 Iced Glass with MP38 Brushed Silver Stripping



IDX 1594

LQ81 Molten Platinum Pearl with
MP38 Brushed Silver Stripping



IDX 1458

TM85 Chameleon Treadplate

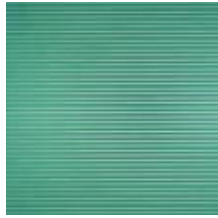
Colometrics Rib new



JS519 Raspberry Rib ♦ T



JS539 Cherry Rib ♦ T



JS891 Spearmint Rib ♦ T



JS915 Blueberry Rib ♦ T



JS777 Lemon Rib ♦ T



JS877 Lime Rib ♦ T



JS666 Tangerine Rib ♦ T



JS992 Plum Rib ♦ T

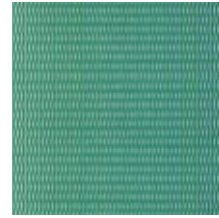
Colometrics Wave new



JW519 Raspberry Wave ♦ T



JW539 Cherry Wave ♦ T



JW891 Spearmint Wave ♦ T



JW915 Blueberry Wave ♦ T



JW777 Lemon Wave ♦ T



JW877 Lime Wave ♦ T



JW666 Tangerine Wave ♦ T



JW992 Plum Wave ♦ T



IDX 1651

JW666 Colometrics Tangerine Wave

Dimensions	305mm x 305mm	12" x 12"
Tile Thickness	2.5mm	
Bevelled Edges	Yes	
Surface Texture	Smooth (Incorporates 3D effect)	

new Special cross-grained bevelled stripping now available in Colometrics Rib, minimum width 6mm (1/4"), 2.5mm gauge only.

T Tiles must be tessellated.

♦ With new super tough finish.

Colometrics recommended as features in borders.

UK Sample Hotline: 024 7686 1499

UK Customer Helpline: 024 7686 1498

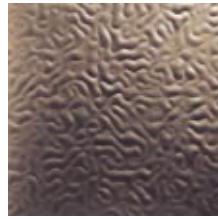
[SAMPLE ME](#)



Molten



LQ31 Quicksilver + ♦



LQ44 New Bronze + ♦



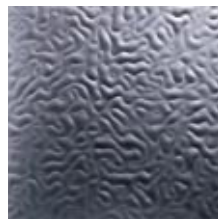
LQ74 Burnished Copper + ♦



LQ75 Brilliant Gold + ♦



LQ81 Platinum Pearl + ♦



LQ93 Liquid Lead + ♦

Micro



LR31 Quicksilver + ♦



LR44 New Bronze + ♦



LR74 Burnished Copper + ♦



LR75 Brilliant Gold + ♦

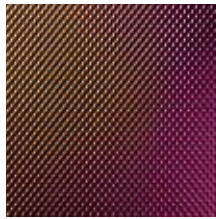


LR81 Platinum Pearl + ♦

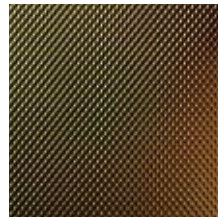


LR93 Liquid Lead + ♦

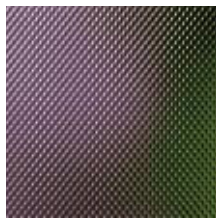
Pressplate Color-Flash



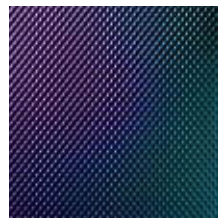
AH535 Plum to Orange + ♦ T



AH737 Green to Gold + ♦ T

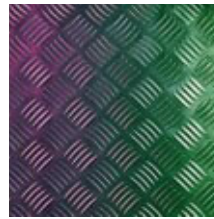


AH939 Plum to Green + ♦ T



AH838 Blue to Purple + ♦ T

Chameleon Treadplate



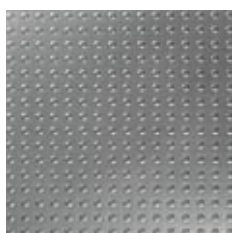
TM85 Chameleon Treadplate + ♦ ○

Dimensions	305mm x 305mm	12" x 12"
Tile Thickness	2.5mm	
Bevelled Edges	Yes	
Surface Texture	Molten - Smooth (Incorporates 3D effect)	
	Micro - Smooth (Incorporates 3D effect)	
	Pressplate - Smooth (Incorporates 3D effect)	
	Chameleon - Treadplate	

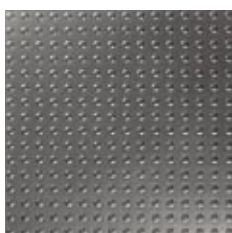
Special bevelled stripping now available in Color-Flash Pressplate, Micro and Molten, minimum width 6mm (1/4"), 2.5mm gauge only.

- + Must be laid with stripping between tiles.
- ♦ With new super tough finish.
- T Tiles must be tessellated.
- Tiles are not cut in register and the pattern will not match from tile to tile.
- * Not suitable for use in standard borders and motifs.

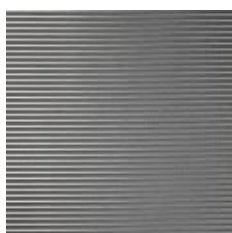
Techno new



DP38 Zinc Stud ♦♦*



DP39 Lead Stud ♦♦*



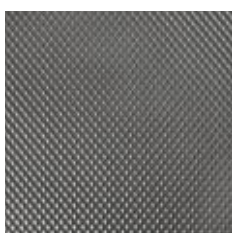
JS38 Zinc Rib ♦ T



JS39 Lead Rib ♦ T



AH38 Pressplate Zinc ♦♦ T



AH39 Pressplate Lead ♦♦ T



MR30 Marcasite T



TG30 Silver Matte Metal ♦ T

Dimensions	305mm x 305mm	12" x 12"
	Matte Metal and Marcasite also available in 457mm x 457mm (18" x 18")	
Tile Thickness	2.5mm	
Bevelled Edges	Yes	
Surface Texture	Stud - Smooth (Incorporates 3D effect) also available as special 3" bevelled key and 19mm (3/4") bevelled stripping Rib - Smooth (Incorporates 3D effect) Pressplate - Smooth (Incorporates 3D effect) Matte Metal - Tick Marcasite - Light Dimple	

- ♦ Must be laid with stripping between tiles.
- ♦♦ With new super tough finish.
- T Tiles must be tessellated.
- * Not suitable for use in standard borders and motifs.

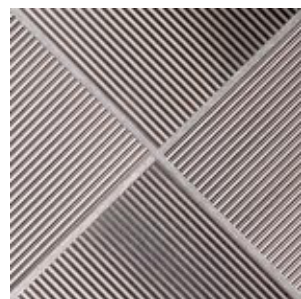
Design Close Ups



Products Featured: TG30, DP39



Products Featured: MR30, DP39



Products Featured: JS38, JS39, TG30



Products Featured: DP38, X-JS38



IDX-1509

DP39 Lead Stud with JS39 cross grained Lead Rib stripping

UK Sample Hotline: 024 7686 1499

UK Customer Helpline: 024 7686 1498

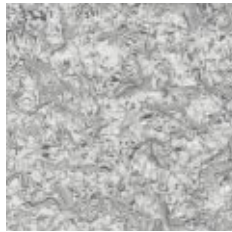
[SAMPLE ME](#)



Shell



SH11 Pearl Shell ◆



SH13 Silver Shell ◆



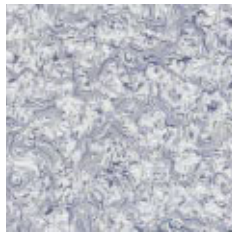
SH15 Pink Shell ◆



SH17 Lemon Shell ◆



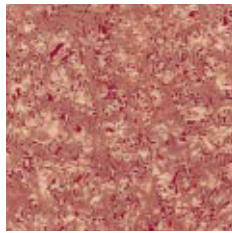
SH18 Green Shell ◆



SH19 Blue Shell ◆



SH47 Tortoiseshell ◆



SH51 Coral Shell ◆

Dimensions	305mm x 305mm	12" x 12"
	Also available as Key Squares & features	
Tile Thickness	2.5mm	
Bevelled Edges	Yes	
Surface Texture	Smooth	

◆ With new super tough finish.

On large orders (over 200m²) a slight shade variation may occur between batches.

Glass



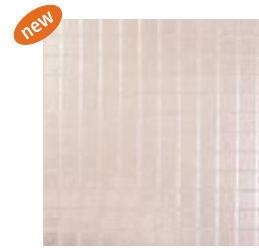
GL01 Iced Glass ◆◆*



GL02 Iced Glass ◆◆*



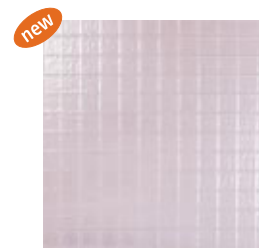
GL013 Silver Glass ◆◆*



GL015 Orchid Glass ◆◆*



GL019 Ocean Glass ◆◆*



GL0199 Lilac Glass ◆◆*



GL014 Champagne Glass ◆◆*

Dimensions	305mm x 305mm	12" x 12"
Tile Thickness	2.5mm	
Bevelled Edges	Yes	
Surface Texture	Smooth With cut bevels, 1" (25mm) on all glass tiles except GL02 which has 2" (51mm) cut bevels	

◆◆ Special bevelled stripping now available in Smooth Glass, minimum width 6mm (1/4"), 2.5mm gauge only.

◆◆ Must be laid with stripping between tiles.

◆ With new super tough finish.

* Not suitable for use in standard borders and motifs.



In addition to our extensive range of products and our ability to cut any design, we offer a unique range of special effect tiles.

Tiles that glow in the dark, or sparkle in the light. Even tiles made to a special formula that react to UV light, creating spectacular effects.

Whatever special effect you require, however large or small, The Amtico Company will make every effort to achieve it.



IDX 516

Special UV reactive product

Stardust



GZ11 White



GZ22 Black



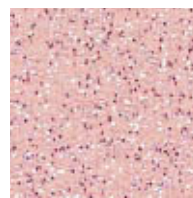
GZ51 Cherry Red



GZ331 Grey



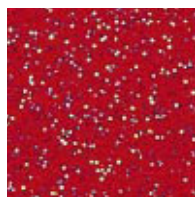
GZ471 Off White



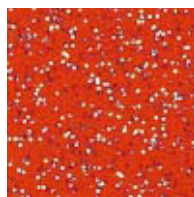
GZ511 Light Pink



GZ519 Hot Pink



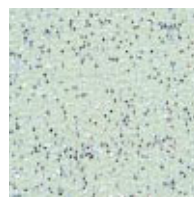
GZ555 Red



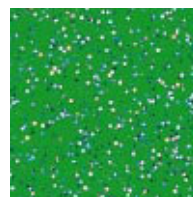
GZ665 Orange



GZ777 Yellow



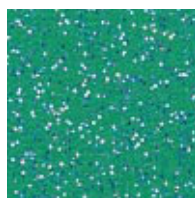
GZ811 Aqua



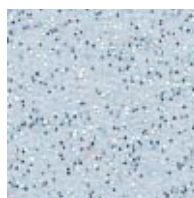
GZ887 Light Green



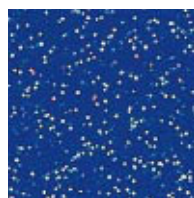
GZ888 Dark Green



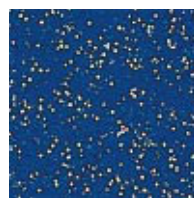
GZ891 Turquoise



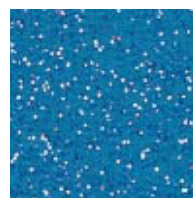
GZ913 Light Blue



GZ915 Royal Blue



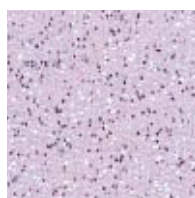
GZ916 Blue



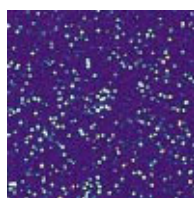
GZ919 Mid Blue



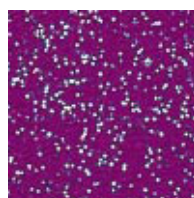
GZ939 Prussian Blue



GZ991 Lilac



GZ992 Purple



GZ995 Mauve

Dimensions	305mm x 305mm	12" x 12"
	457mm x 457mm	18" x 18"
Tile Thickness	2,5mm	
Bevelled Edges	Yes	
Surface Texture	Light Dimple	

The samples shown are close up sections from full size tiles.

UK Sample Hotline: 024 7686 1499

UK Customer Helpline: 024 7686 1498

SAMPLE ME



Lunar



MT131 Lunar Silver



MT134 Lunar Bronze



MT136 Lunar Copper



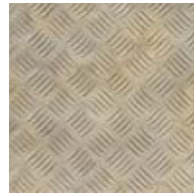
MT239 Lunar Blue



MT232 Lunar Lead

Dimensions	305mm x 305mm	12" x 12"
	457mm x 457mm	18" x 18"
Tile Thickness	2.5mm	
Bevelled Edges	Yes	
Surface Texture	Lunar	

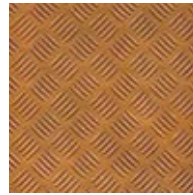
Treadplate



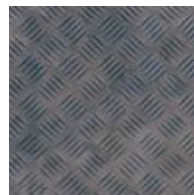
MTP131 Treadplate Silver ■*○



MTP134 Treadplate Bronze ■*○



MTP136 Treadplate Copper ■*○



MTP239 Treadplate Blue ■*○

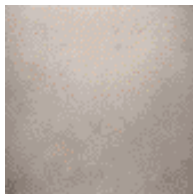


MTP232 Treadplate Lead ■*○

Dimensions	305mm x 305mm	12" x 12"
	457mm x 457mm	18" x 18"
Tile Thickness	2.5mm	
Bevelled Edges	Yes	
Surface Texture	Treadplate	

- Recommended laid with stripping. Also works well in chequerboard with Lunar.
- Treadplate tiles are not cut in register and the pattern will not match from tile to tile.
- * Not suitable for use in standard borders and motifs.

Astral



AMT232 Lead Astral



AMT134 Bronze Astral



AMT131 Silver Astral



AMT138 Green Astral



AMT235 Purple Astral



AMT239 Blue Astral



AMT136 Copper Astral

Dimensions	305mm x 305mm	12" x 12"
	457mm x 457mm	18" x 18"
Tile Thickness	2.5mm	
Bevelled Edges	Yes	
Surface Texture	Antique Metal	

Antique Metal



AM18 Antique Bronze



AM19 Antique Copper



AM39 Antique Pewter

Dimensions	305mm x 305mm	12" x 12"
	457mm x 457mm	18" x 18"
Tile Thickness	2.5mm	
Bevelled Edges	Yes	
Surface Texture	Antique Metal	

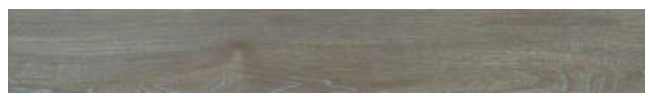
Metallic Wood



WZ18 Bronze



WZ19 Copper



WZ39 Lead



WZ98 Blue



WZ99 Purple

The Wood Collection is featured on pages 16-19.

Dimensions	76mm x 229mm	3" x 9"
	76mm x 915mm	3" x 36"
	114mm x 915mm	4 1/2" x 36"
	152mm x 915mm	6" x 36"
Tile Thickness	2.5mm	
Bevelled Edges	Yes	
Surface Texture	Sawnwood	

Celestial



CD98 Celestial Blue

Dimensions	305mm x 305mm	12" x 12"
	457mm x 457mm	18" x 18"
Tile Thickness	2.5mm	
Bevelled Edges	Yes	
Surface Texture	Light Dimple	

Meteor (Beaten Metal Finish)



DMP18 Bronze



DMP19 Copper



DMP38 Silver



DMP39 Lead



DMP59 Burgundy



DMP78 Gold



DMP79 Brass



DMP89 Green



DMP98 Blue



DMP99 Purple

Dimensions	Available for Key Squares and stripping only
Tile Thickness	2.5mm
Bevelled Edges	Yes
Surface Texture	Heavy Granite

Meteor (Brushed Metal Finish)



MP18 Bronze



MP78 Gold



MP19 Copper



MP79 Brass



MP38 Silver



MP89 Green



MP39 Lead



MP98 Blue



MP59 Burgundy



MP99 Purple

Dimensions	Available for stripping only	
	3mm x 915mm	1/8" x 36"
	6mm x 915mm	1/4" x 36"
	13mm x 915mm	1/2" x 36"
	19mm x 915mm	3/4" x 36"
maximum stripping width 19mm (3/4") stripping over 19mm (3/4") is recommended in Beaten Metal Finish		
Tile Thickness	2mm or 2.5mm	
Bevelled Edges	No	
Surface Texture	 Tick	

UK Sample Hotline: 024 7686 1499

UK Customer Helpline: 024 7686 1498

SAMPLE ME



Amtico Woods are available in over 40 colourways and can be cut to virtually any size or shape with a choice of textures. Because of the natural characteristics of grain and tone, some woods are more suited to particular installation formats. See key below:

Recommended Formats

Stripwood	■ 57mm x 457mm	2¼" x 18"
	□ 76mm x 915mm	3" x 36"
	▣ 114mm x 915mm	4½" x 36"
	▤ 152mm x 915mm	6" x 36"
	▥ 229mm x 915mm	9" x 36"

Blockwood	● 76mm x 229mm	3" x 9"
-----------	----------------	---------

Random Plank ▲ (See page 17 for sizes)

Parquet P (See page 17 for sizes)

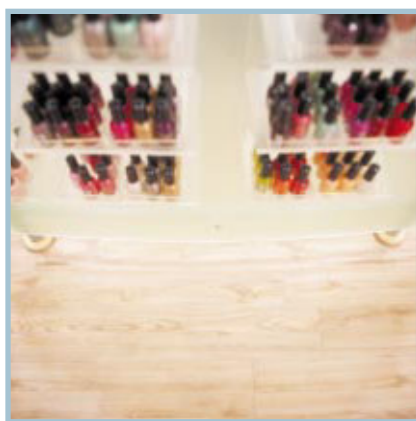
How Amtico Scores over Natural Woods and Laminates

Won't warp, swell or splinter	✓
Water resistant	✓
No sanding or refinishing is ever needed	✓
Will not fade	✓
Quieter under foot	✓



IDX 1425

W711E Golden Elm and GL02 Iced Glass



IDX 1426

W711E Golden Elm



IDX 2098

W693E Beech and SN36 Norwegian Slate



IDX 1455

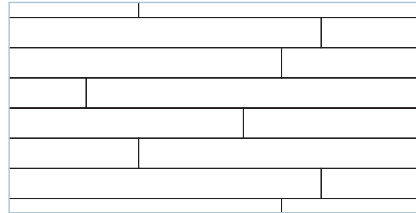
W719E Antique Wood

Stripwood



Stripwood WZ699 Teak

Installation Format



See key for recommended woods.

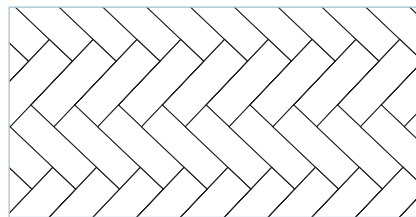
Stripwood

Dimensions	57mm x 457mm	2¼" x 18"
	76mm x 915mm	3" x 36"
	114mm x 915mm	4½" x 36"
	152mm x 915mm	6" x 36"
	229mm x 915mm	9" x 36"
Tile Thickness	2.5mm	
Bevelled Edges	Yes	

Blockwood



Blockwood W684E Maple



See key for recommended woods.

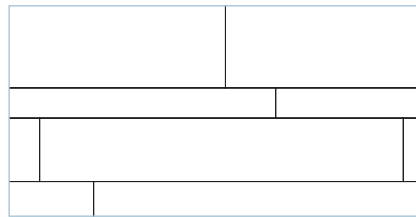
Blockwood

Dimensions	76mm x 229mm	3" x 9"
Tile Thickness	2.5mm	
Bevelled Edges	Yes	

Random Plank



Random Plank W698E Elm



The Random Plank pattern is designed to work with selected woods. Each consignment will contain equal amounts of the 3 sizes mentioned.

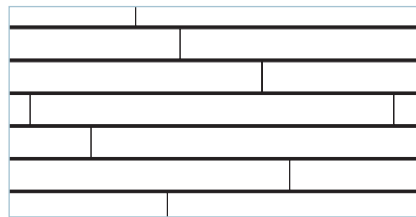
Random Plank

Dimensions	76mm x 915mm	3" x 36"
	152mm x 915mm	6" x 36"
	229mm x 915mm	9" x 36"
Tile Thickness	2.5mm	
Bevelled Edges	Yes	

Ships Decking



Ships Decking W793E with MP38 strips



Stripwood floors can be enhanced using stripping to create Ships Decking effect.

Ships Decking

Dimensions; Plank	76mm x 915mm	3" x 36"
	114mm x 915mm	4½" x 36"
	152mm x 915mm	6" x 36"
Stripping	3mm x 915mm	¼" x 36"
	6mm x 915mm	½" x 36"
Tile Thickness	2.5mm	
Bevelled Edges	Yes	

Parquet



NGF699E New Arden Teak



BK713E Buckingham Pastel Ash

All Amtico parquet tiles are guaranteed to be different. Parquet designs available in many of our woods - see key for details.

Parquet

Dimensions	305mm x 305mm	12" x 12"
Tile Thickness	2.5mm	
Bevelled Edges	Yes BK, No NGF	

Please note - All Amtico Woods now have a standard finish - Wood Tick. Sawnwood is available to special order.



Natural Hardwoods



Stripwood W706E Light Cherry



W599E Washed Teak □ □ □ ● ▲ P



W695E Variable Oak □ □ □ ● ▲



W696E Light Oak □ □ □ ● ▲



W699E Teak □ □ □ ● ▲ P



W704E Limed Oak □ □ □ ● ▲ P



W705E American Oak ■ □ □ □ ● ▲ P



W706E Light Cherry ■ □ □ □ ● ▲ P



W709E English Oak ■ □ □ □ ● ▲ P



W710E Oak □ □ □ ▲

Metallic woods are also available, see page 15.

Beech, Maple & Bamboo



Stripwood W682E White Maple with W687E stripping



W682E White Maple ■ □ □ □ ●



W684E Maple ■ □ □ □ ● P



W693E Beech ■ □ □ □ ●



W793E Warm Beech ■ □ □ □ ● P



W730E Bamboo ■ □

Key

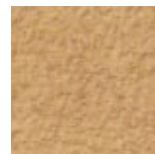
recommended formats

Stripwood	■ 57mm x 457mm	2 1/4" x 18"
	□ 76mm x 915mm	3" x 36"
	▣ 114mm x 915mm	4 1/2" x 36"
	▤ 152mm x 915mm	6" x 36"
	▥ 229mm x 915mm	9" x 36"
Blockwood	● 76mm x 229mm	3" x 9"
Random Plank	▲	(See page 17 for sizes)
Parquet	P	(See page 17 for sizes)

Tilewood



TW708 Birds Eye Maple



TW714 Warm Maple

Dimensions	
305mm x 305mm	12" x 12"
457mm x 457mm	18" x 18"
Surface Texture	Smooth
Tile Thickness	2.5mm



Concrete



CN30Q Concrete Pale



CN34Q Concrete Medium



CN83Q Concrete Ivy



CN93Q Concrete Teal



CN138Q Concrete Jade



CN139Q Concrete Grey



CN399Q Concrete Blue



CN447Q Concrete Gold

Dimensions	305mm x 305mm	12" x 12"
	457mm x 457mm	18" x 18"
Tile Thickness	2.5mm	
Bevelled Edges	Yes	
Surface Texture	Quarry	

Concrete as stripping is recommended in DS finish - CN30 and CN34 only.

Customised Terrazzo



IDX 959

FAO Schwarz, USA

The diagram below shows how it is possible to create your own Terrazzo tile by choosing colours for the individual layers. These build up to create a customised tile. There is no surcharge for custom colours when the minimum of 3,000 square metres is required for your project. If you are interested in using a bespoke Terrazzo, please contact your local representative or distributor.



Quarry



MQR45 Terracotta



MQR54 Natural Clay



MQR74 Biscuit

Dimensions	305mm x 305mm	12" x 12"
	457mm x 457mm	18" x 18"
Tile Thickness	2.5mm	
Bevelled Edges	Yes	
Surface Texture	Quarry	

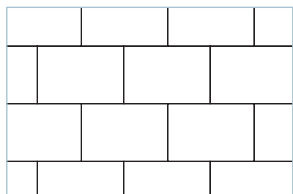
Norwegian & European Slate



EA89 European Slate Dark Green *



EA29 European Slate Dark Grey *



Typical Installation Format



SN36 Norwegian Slate Silver ◇

Oriental, Firestone & African Slate



OL21 Oriental Slate Lead *



OL27 Oriental Slate Brown *



SL72 Firestone Slate **



OL74 Oriental Slate Saffron *



OL94 Oriental Slate Purple *

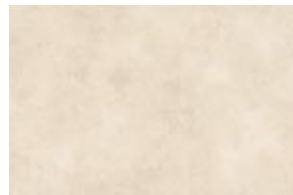


SL34 African Slate * +

Limestone & Sandstone



LJ47 Limestone Cotswold



LK14 Limestone



SD14 Sedimentary Sandstone Light



SD44 Sedimentary Sandstone Dark

Dimensions	305mm x 305mm	12" x 12"
	305mm x 457mm	12" x 18"
	457mm x 457mm	18" x 18"

Tile Thickness	2.5mm
----------------	-------

Bevelled Edges	Yes
----------------	-----

Surface Texture	Norwegian Slate - Riven Marble
-----------------	--------------------------------

	European Slate - Riven Slate
--	------------------------------

new	Oriental Slate - Riven Marble
------------	-------------------------------

new	Firestone Slate - Riven Marble
------------	--------------------------------

new	African Slate - Riven Marble
------------	------------------------------

	Sedimentary Sandstone - DS Finish
--	-----------------------------------

	Limestone LJ47 Cotswold - DS Finish
--	-------------------------------------

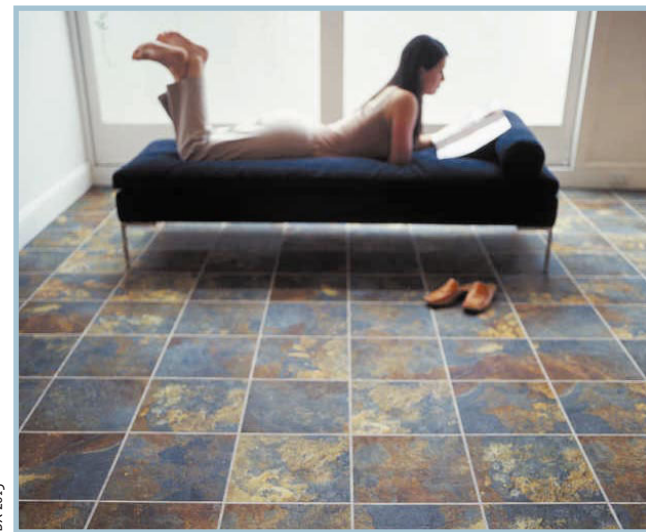
	Limestone LK14 - DS Finish
--	----------------------------

* Firestone Slate is only available in 305mm x 305mm (12" x 12") or Design 140 format (see page 30) because of the wide variation in colour between tiles.

+ African Slate only available in 305mm x 305mm (12" x 12"). Looks most authentic with 6mm (1/4") CN30 or CN34 stripping between tiles.

* Not suitable for use in standard borders and motifs.

◇ Norwegian Slate is not available in square formats.



IDX 2015

SL34 African Slate with CN34 stripping

This exotic slate has a wide variation of hues within each tile, and tile to tile, and must be laid completely at random for best effect.

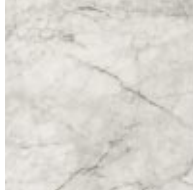
UK Sample Hotline: 024 7686 1499

UK Customer Helpline: 024 7686 1498

SAMPLE ME



Onyx & Alabaster



OM3CT Onyx Grey



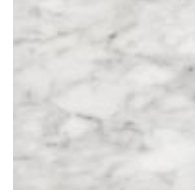
OM4CT Onyx Beige



OM53CT Onyx Pink



SM6CT Alabaster Green



IM13CT Imperial Marble Grey



IM41CT Imperial Marble Beige

Roman Marble



RM30CT Roman Marble Grey



RM41CT Roman Marble Beige



RM31CT Roman Marble Charcoal



RM90CT Roman Marble Blue



RM54CT Roman Marble Dark Pink

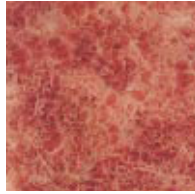


RM81CT Roman Marble Green

Florentine



NM2CT Florentine Black



NM5CT Florentine Wine



NM7CT Florentine Green

Corinthian



CT1 Corinthian White *

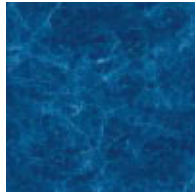


CT4 Corinthian Beige *

Gregorian



NM48CT Florentine Tan



NM97CT Florentine Blue



GW13CT Gregorian Marble White

Lorenzo Travertine



LT4 Lorenzo Travertine Beige *

Bolarro



BM12CT Bolarro Neutral

Marbles

Dimensions	305mm x 305mm	12" x 12"
	305mm x 457mm	12" x 18"
	457mm x 457mm	18" x 18"
Tile Thickness	2.5mm	
Bevelled Edges	Yes	
Surface Texture	Riven Marble	

Lorenzo Travertine & Corinthian

Dimensions	305mm x 305mm	12" x 12"
	305mm x 457mm	12" x 18"
Tile Thickness	Corinthian 2.5mm	
	Lorenzo 2mm	
Surface Texture	Corinthian - Riven Marble	
	Lorenzo - Travertine Marble	

* Not suitable for use in standard borders and motifs.



Mosaic



RM30M Roman Marble Mosaic Grey ▼▶



RM41M Roman Marble Mosaic Beige ▼▶



RM54M Roman Marble Mosaic Dark Pink ▼▶



RM81M Roman Marble Mosaic Green ▼▶



RM90M Roman Marble Mosaic Blue ▼▶



OM3M Onyx Mosaic Grey ▼▶



SM6M Alabaster Mosaic Green ▼▶



BM12M Bolarro Mosaic Neutral ▼▶



NM2M Florentine Marble Mosaic Black ▼▶



NM5M Florentine Marble Mosaic Wine ▼▶



NM7M Florentine Marble Mosaic Green ▼▶



OL21M Oriental Slate Mosaic Lead ▼▶



CD89M Celestial Mosaic Green ▼▶



NM48M Florentine Marble Mosaic Tan ▼▶



NM97M Florentine Marble Mosaic Blue ▼▶

Due to the special process of manufacturing, the mosaic embossed effect may be less resistant to wear than some other Amico products, and is not recommended in full tiles for areas subject to high foot traffic.

Dimensions	305mm x 305mm	12" x 12"
Also available as Key Squares		
Tile Thickness	2.5mm	
Bevelled Edges	Yes	
Surface Texture	Mosaic	

▼ Must be laid with stripping between tiles of the same colour.

▶ Suitable for use only in San Marco and Medici borders and motifs.

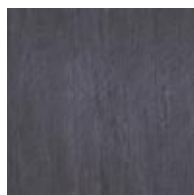
Century ^{new}



VR11 Pearl T *



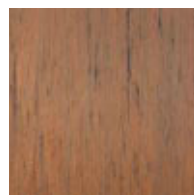
VR38 Silver T *



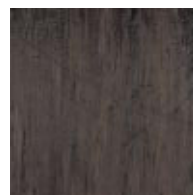
VR93 Charcoal T *



VR78 Gold T *



VR19 Copper T *



VR44 Bronze T *



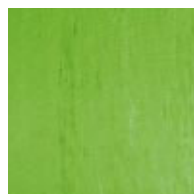
VR66 Orange T *



VR51 Pink T *



VR92 Purple T *



VR88 Green T *



VR89 Teal T *



VR91 Blue T *

Dimensions	305mm x 305mm	12" x 12"
	457mm x 457mm	18" x 18"
Also available as bevelled stripping - minimum width 6mm (1/4"), 2.5mm gauge only.		

Tile Thickness	2.5mm	
Bevelled Edges	Yes	
Surface Texture	Riven Marble	

T Tiles must be tessellated.

* Not suitable for use in standard borders and motifs.

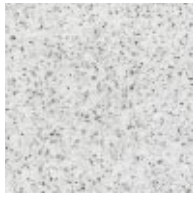
UK Sample Hotline: 024 7686 1499

UK Customer Helpline: 024 7686 1498

SAMPLE ME



Montella Granite



MG12 Montella Granite White



MG23 Montella Granite Black



MG34 Montella Granite Grey



MG43 Montella Granite Gold

Dimensions	305mm x 305mm	12" x 12"
	305mm x 457mm	12" x 18"
	457mm x 457mm	18" x 18"
Tile Thickness	2.5mm	
Bevelled Edges	Yes	
Surface Texture	Heavy Granite	

Highland Granite



HG46 Highland Granite Orange



HG41 Highland Granite Pink



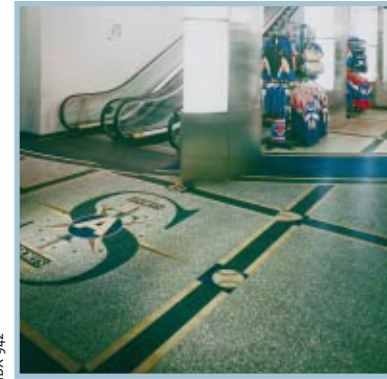
SS54 Cairngorm Light Pink



SS30 Cairngorm Mid Grey

Dimensions	305mm x 305mm	12" x 12"
	305mm x 457mm	12" x 18"
	457mm x 457mm	18" x 18"
Tile Thickness	2.5mm	
Bevelled Edges	Yes	
Surface Texture	Light Dimple	

Dimensions	305mm x 305mm	12" x 12"
	305mm x 457mm	12" x 18"
	457mm x 457mm	18" x 18"
Tile Thickness	2.5mm	
Bevelled Edges	Yes	
Surface Texture	Smooth	



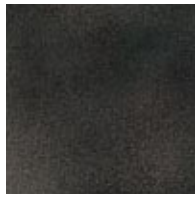
IDX 942

SS30 Cairngorm Mid Grey, SS22 Black with Florentine, NM48 Tan and NM97 Blue

Clipstone



CLP1 Clipstone Natural



CLP21 Clipstone Black



CLP37 Clipstone Grey



CLP32 Clipstone Charcoal



CLP45 Clipstone Brick



CLP47 Clipstone Terracotta



CLP48 Clipstone Oatmeal



CLP49 Clipstone Stone

Dimensions	305mm x 305mm	12" x 12"
	457mm x 457mm	18" x 18"
Tile Thickness	2.5mm	
Bevelled Edges	Yes	
Surface Texture	Light Dimple	

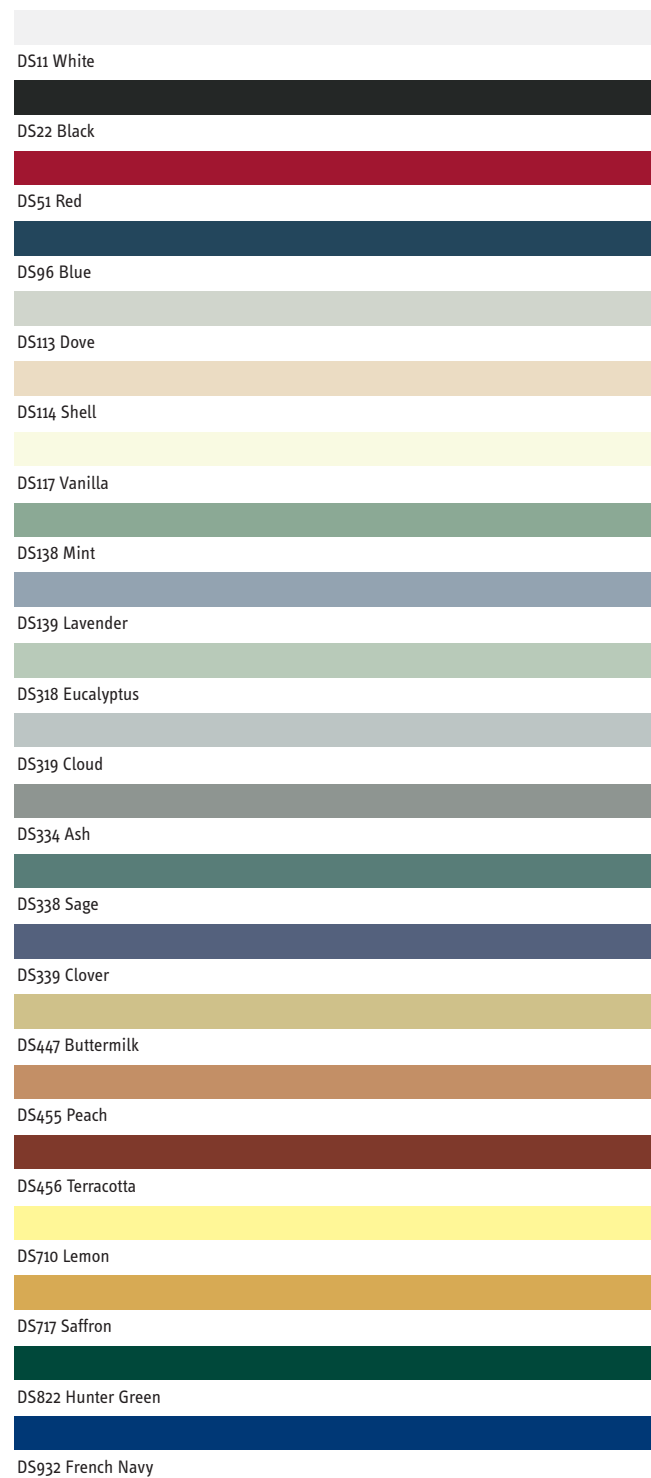


IDX 1079


MG23 Montella Granite Black and MG12 White




Produced in Strips and Key Squares, Accent Colours transform standard designs into distinctive floors with the minimum of effort.



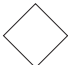


Strips 19mm (3/4") and less

Dimensions	3mm x 915mm	1/8" x 36"
	6mm x 915mm	1/4" x 36"
	10mm x 915mm	3/8" x 36"
	13mm x 915mm	1/2" x 36"
	19mm x 915mm	3/4" x 36"
Bevelled Edges	No	
Strip Gauge	2mm (2.5mm when used with unbevelled tiles)	
Surface Texture	DS Finish	
		Strips up to 19mm (3/4") use 2mm gauge (to sit at base of bevel)

Strips 25mm (1") and over

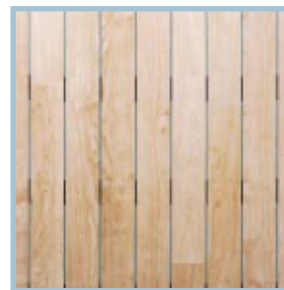
Dimensions	25mm	1" and over
Bevelled Edges	Yes	
Strip Gauge	2.5mm	
Surface Texture	DS Finish up to 51mm (2") wide Clipstone Finish over 51mm (2") wide	
		Strips of 25mm (1") or over use 2.5mm gauge with bevel

Key Squares

			
Dimensions	38mm x 38mm	1 1/2" x 1 1/2"	
	51mm x 51mm	2" x 2"	
	76mm x 76mm	3" x 3"	
Tile Thickness	2.5mm		
Bevelled Edges	Yes		
Surface Texture	Key Squares will follow the standard surface characteristics for that product.		

Please note that Accent Colours are not supplied as field tiles. Over 80 additional colours are available for use in designs such as company logotypes, or to match company colour schemes. Please ask for further information.

Accent Colours used to create a design floor look



Products Featured: DS138, DS338, W682E



Products Featured: DS139, DS399, CLP1



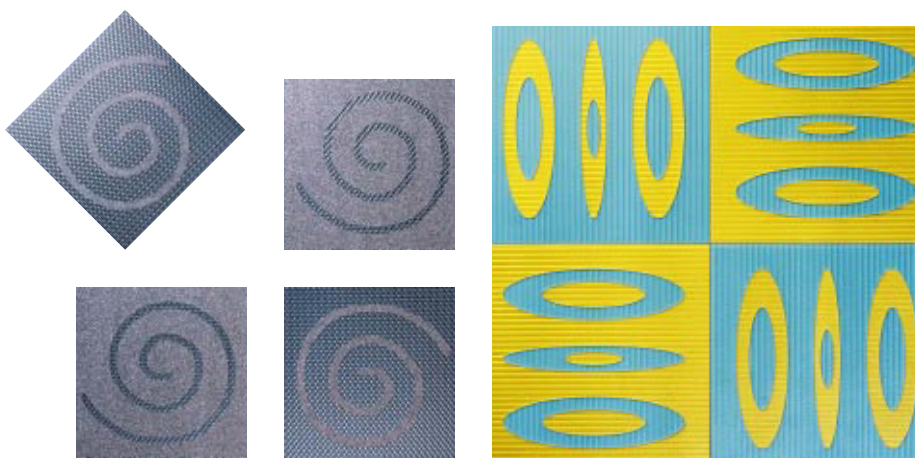
Welded Features

Introducing special feature tiles, offering you the opportunity to create your own bespoke design which can be used to add interest to a plain floor or as an all over customised pattern.

Each tile has a repeat feature or motif in contrasting or tonal colourways. These products are combined in positive and negative forms to create impact and to eliminate unnecessary wastage.

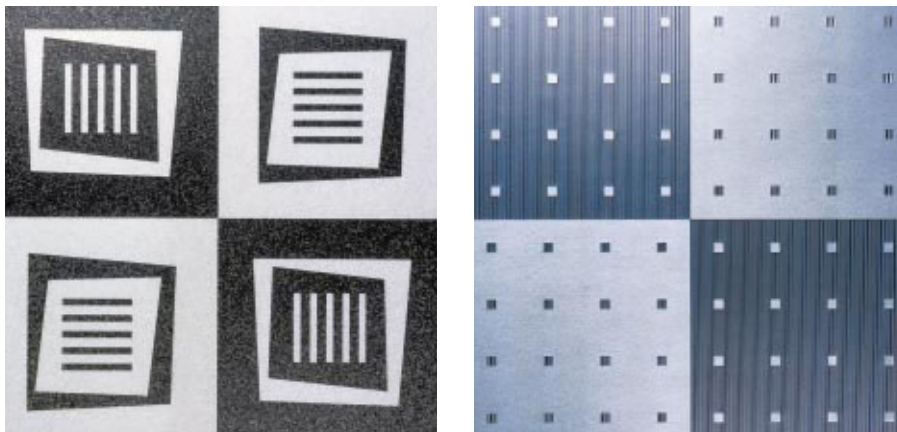
You provide the design and select the products, we programme it and make the tiles using our unique welding technology. The result is an individual perfectly formed tile with no individual, loose pieces.

Here are some ideas of some of the effects that can be created - the simple designs are often the most effective.



Suggested uses

- Chequerboard across whole floor
- Dramatic features within a plainer floor
- Large scale Border designs



Advantages

- Quick and easy to install
- Customised designs to your specification
- Increase efficiency on site

These examples show four tiles laid together to demonstrate the positive/negative effect.

Dimensions	305mm x 305mm	12" x 12" some product also available as 457mm x 457mm	18" x 18"
Lead Time	Additional 2-3 weeks required		
Installation	Equal quantities of each tile are supplied and tiles should be installed chequerboard		

Magnetic Embossed Logos

New technology allows us to offer personalised magnetic embossed logos, like the one shown.

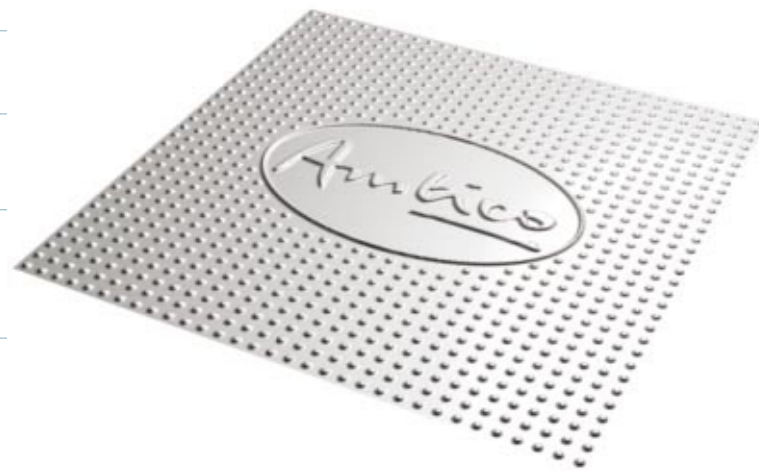
We literally embed your company or brand logo into a feature motif - this can be used once, or repeated regularly or randomly through the floor area.

Available in a range of new generation products, magnetic embossed logos have a super tough finish.

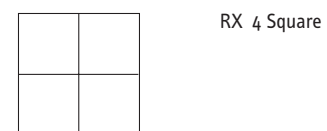
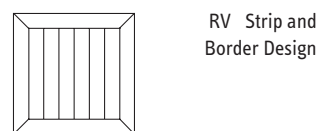
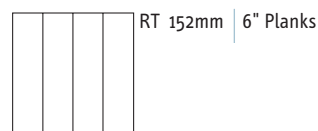
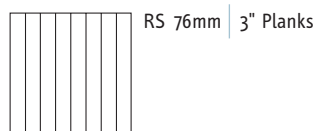
For more information please refer to your local contact

Dimensions	Maximum size 610mm x 610mm	24" x 24"
Lead Time	6 additional weeks from receipt of order, depending on geographic location	
Artwork	Mac or PC compatible psd file of 300 dpi or above, with the outer boundary for the logo defined	

Please Note: Magnetic embossed logos, as with all Amtico logos, are sold as part of a main floor and are not available separately.



Raised Access Panels



Dimensions	610mm x 610mm	24" x 24" untrimmed
	600mm x 600mm	23 ⁵ / ₈ " x 23 ⁵ / ₈ " trimmed
Lead Time	Please refer to your local contact	
Bevelled Edges	All internal joints are bevelled, the outside edges are usually unbevelled	

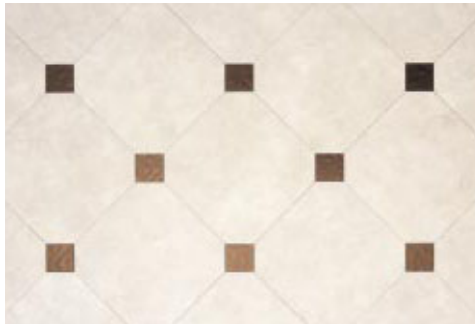
Amtico produces four standard layouts suitable for application to raised access flooring panels, either on site or by the fabricator of the panels. These are available in most effects and surface finishes from the Amtico collection.

www.amtico.com

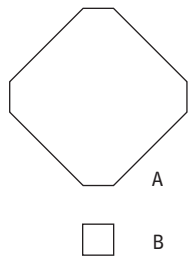
SHOW ME



Amtico cutting technology offers total design flexibility. Our ability to respond to your brief, and meet your specifications exactly, is second to none. For many projects, an entirely custom floor design may not be appropriate. In these situations, Amtico provides a number of standard designs - many of which are design classics based on floor patterns that are centuries old. Others are more contemporary.



Products Featured: a) LK14 b) LQ74



Standard Floor Design 25

Dimensions
Full Scale

A 305mm x 305mm (12" x 12") tile with clipped corners

B 76mm x 76mm (3" x 3") or 51mm x 51mm (2" x 2") key square

Three Quarter Scale

A 229mm x 229mm (9" x 9") tile with clipped corners

B 51mm x 51mm (2" x 2") or 38mm x 38mm (1 1/2" x 1 1/2") key square

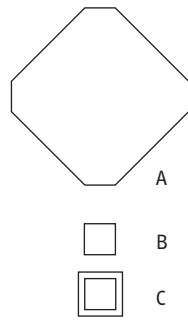
Half Scale

A 152mm x 152mm (6" x 6") tile with clipped corners

B 38mm x 38mm (1 1/2" x 1 1/2") key square



Products Featured: a) OM3CT b) NM2M c) MP38



Standard Floor Design 50

Dimensions
Full Scale

A 305mm x 305mm (12" x 12") tile with clipped corners

B 51mm x 51mm (2" x 2") or 38mm x 38mm (1 1/2" x 1 1/2") key square

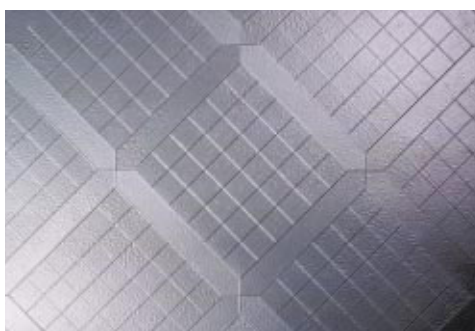
C 13mm (1/2") or 6mm (1/4") window

Three Quarter Scale

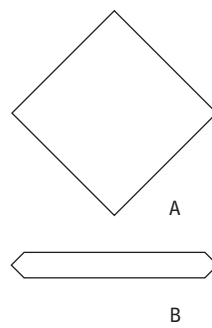
A 229mm x 229mm (9" x 9") tile with clipped corners

B 51mm x 51mm (2" x 2") or 38mm x 38mm (1 1/2" x 1 1/2") key square

C 6mm (1/4") window



Products Featured: a) GL02 b) GLO



Standard Floor Design 23

Dimensions
Full Scale

A 305mm x 305mm (12" x 12") tile

B 51mm x 356mm (2" x 14") elongon

Three Quarter Scale

A 229mm x 229mm (9" x 9") tile

B 51mm x 279mm (2" x 11") or 38mm x 268mm (1 1/2" x 10 1/2") elongon

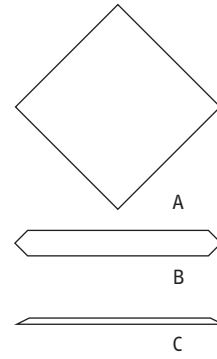
Half Scale

A 152mm x 152mm (6" x 6") tile

B 38mm x 190mm (1 1/2" x 7 1/2") elongon



Products Featured: a) SD14 b) LK14 c) SD44 (cross-grained)



Standard Floor Design 202 (laid diagonally)

Dimensions
Full Scale

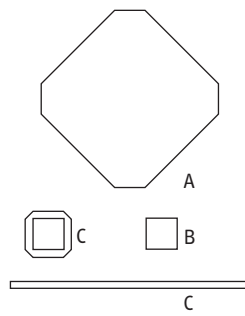
- A 305mm x 305mm (12" x 12") tile
- B 76mm (3") wide elongon
- C 6mm (1/4") mitred strip

Three Quarter Scale
A 229mm x 229mm (9" x 9") tile

- B 51mm (2") wide elongon
- C 6mm (1/4") or 3mm (1/8") mitred strip



Products Featured: a) MQR45 b) MQR45 c) CN30



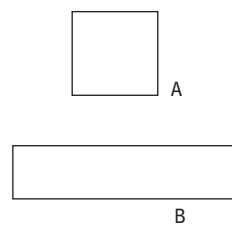
Standard Floor Design 524 (laid diagonally)

Dimensions

- A 305mm x 305mm (12" x 12") tile with clipped corners
- B 51mm x 51mm (2" x 2") key square
- C 6mm (1/4") strip



Products Featured: a) MTP239 b) W684E



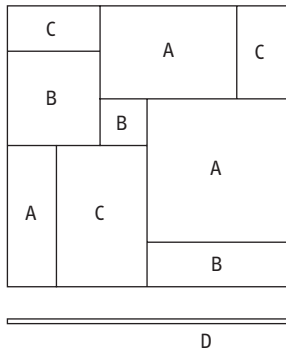
Standard Floor Design 137 (laid diagonally)

Dimensions

- A 114mm x 114mm (4 1/2" x 4 1/2") tile
- B 76mm x 305mm (3" x 12")



Products Featured: a) SN36 b) SN36 c) SN36 d) CN30



Standard Floor Design 140 (laid diagonally)

Dimensions (Largest tile listed only)

Full Scale

A 457mm x 457mm (18" x 18") tile

D 3mm (1/8") strip

Two Thirds Scale

A 305mm x 305mm (12" x 12") tile

D 3mm (1/8") strip

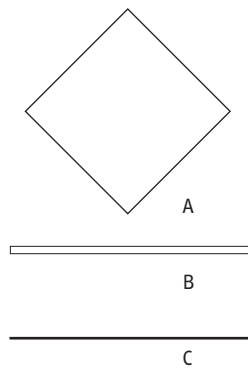
Half Scale

A 229mm x 229mm (9" x 9") tile

D 3mm (1/8") strip



Products Featured: a) AM19 b) W706E c) DS22



Standard Floor Design 205 (laid diagonally)

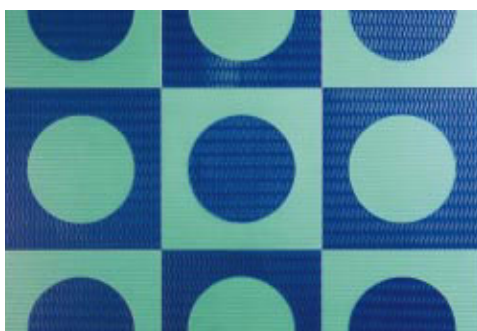
Dimensions

A 305mm x 305mm (12" x 12") tile

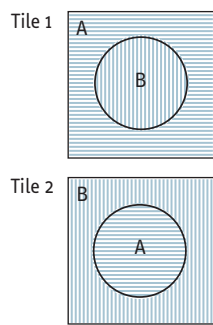
B 6mm (1/4") strip

C 3mm (1/8") strip

It is recommended that the stripping in this design is laid in a basketweave format.



Products Featured: a) JW891 b) JW915



new

Standard Floor Design 404

Dimensions

Tile 1

A 305mm x 305mm (12" x 12") tile with 200mm (8") circle inset

B 200mm (8") circle

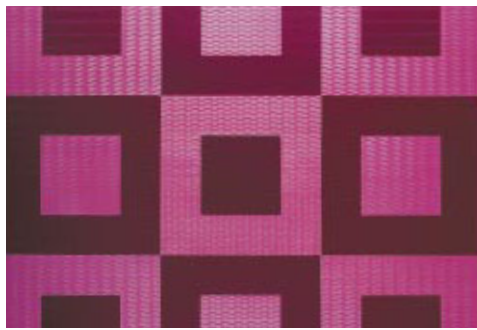
Tile 2

A 200mm (8") circle

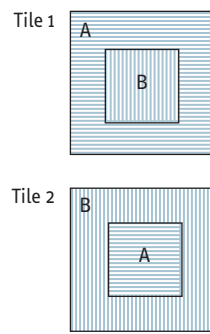
B 305mm x 305mm (12" x 12") tile with 200mm (8") circle inset

Equal quantities of each tile are supplied.

Directional products should be tessellated (as shown).



Products Featured: a) JW539 b) JW519



new Standard Floor Design 444

Dimensions

Tile 1

A 305mm x 305mm (12" x 12") tile with 152mm x 152mm (6" x 6") inset

B 152mm x 152mm (6" x 6")

Tile 2

A 152mm x 152mm (6" x 6")

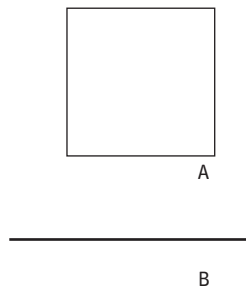
B 305mm x 305mm (12" x 12") tile with 152mm x 152mm (6" x 6") inset

Equal quantities of each tile are supplied.
Directional products should be tessellated (as shown).

Examples of stripping to create a design floor look



Products Featured: a) SL34* b) CN30
* SL34 African Slate is available in 305mm x 305mm (12" x 12") only



Lacing Strip (laid diagonally)

Dimensions

Full Scale

A 457mm x 457mm (18" x 18")

B 6mm x 915mm (1/4" x 36")

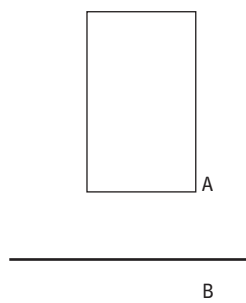
Two Thirds Scale (shown here)

A 305mm x 305mm (12" x 12")

B 3mm x 915mm (1/8" x 36")



Products Featured: a) SD44 b) SD14



Broken Bond

Dimensions

Full Scale (not available in SL34)

A 305mm x 457mm (12" x 18") tile

B 6mm (1/4") strip



IDX 407

Wagner Moden, Germany

Amtico Borders are available in many combinations of colours. You are not restricted to a limited range of standard options. The colourway shown is for your guidance only. For our full range of Standard Borders visit our website.

To create your own individual Border, follow these simple steps:

1. Select the Design:
The complexity and the width of the Border should be appropriate to the location and floor design.
2. Choose the products:
From the collections shown in this brochure.
3. Record your choice:
Make a note of your choice for each component.

Most Borders have a complementary corner motif available at 90° angles as shown and 45° angles.



C42 Corner



B42 Mackintosh Border 89mm x 915mm (3 1/2" x 36")

Products Featured: A) MP39 B) W682E C) AH38 D) MP39 E) MP38

A B C D E



C40 Corner



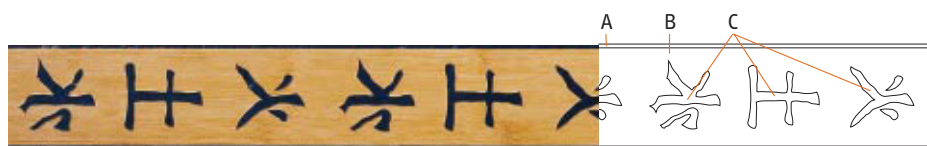
B40 Woodland Leaves Border 76mm x 915mm (3" x 36")

Products Featured: A) W793E B) W705E C) W793E D) W699E E) TW708

A B C D E



C41 Corner



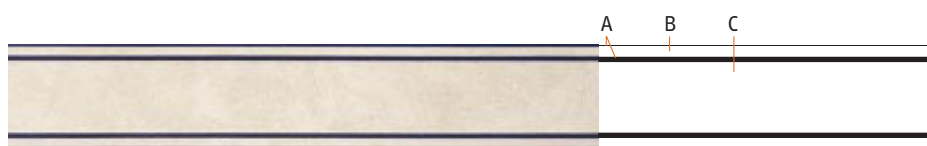
B41 Feng Shui Border 76mm x 915mm (3" x 36")

Products Featured: A) DS22 B) W730E C) DS22

A B C



C44 Corner



B44 Nouveau Border 76mm x 915mm (3" x 36") Copy corners may be inserted at intervals between border lengths for added detail

Products Featured: A) WZ98 B) LK14 C) LK14 D) GL019

A B C D



C43 Corner



B43 Filigree Border 76mm x 915mm (3" x 36")

Products Featured: A) AM39 B) DMP38 C) OM3CT D) AM39 E) DMP38

A B C D E



C52 Corner



B52 Daisy Border 64mm x 915mm (2 1/2" x 36")

Products Featured: A) GZ991 B) W682E C) SH11 D) GZ811

A B C D



C45 Corner



B45 Bubble Border 64mm x 915mm (2 1/2" x 36")

Products Featured: A) GL09 B) GL099 C) GL0

A B C



C48 Corner



B48 Matrix Border 57mm x 915mm (2 1/4" x 36")

Products Featured: A) JS915* B) LJ47 C) JS891* (*Colormetrics recommended as features in borders)

A B C



C47 Corner



B47 Inset Square Border (bevelled) 51mm x 915mm (2" x 36")

Products Featured: A) LK14 B) LQ74

A B



C11 Compass Corner



B11 Compass Border 76mm x 915mm (3" x 36")

Products Featured: A) MG23 B) MP78 C) MG12 D) MG23

A B C D



C25 Zeus Corner



B25 Zeus Border 114mm x 915mm (4 1/2" x 36")

Products Featured: A) MP38 B) CD98

A B

Ambico
BORDERS



C30B San Marco Corner*



B30B San Marco Border * 102mm x 915mm (4" x 36")
Products Featured: A) NM2M B) OM3M C) OL21M D) RM30M E) OM3M

A B C D E



C12 Scroll Corner



B12 Scroll Border 102mm x 915mm (4" x 36")
Products Featured: A) W701E B) MP19 C) W599E D) W700E E) W699E

A B C D E



C29B Medici Corner*

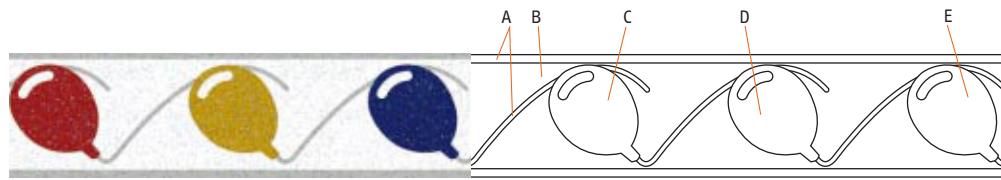


B29B Medici Border * 102mm x 915mm (4" x 36")
Products Featured: A) NM5M B) BM12M C) RM54M D) NM5M

A B C D



C856 Balloon Corner



B856N Balloon Border 102mm x 915mm (4" x 36")
Products Featured: A) GZ331 B) GZ11 C) GZ555 D) GZ777 E) GZ915

A B C D E



C27B Bevelled Diamond Corner ♦



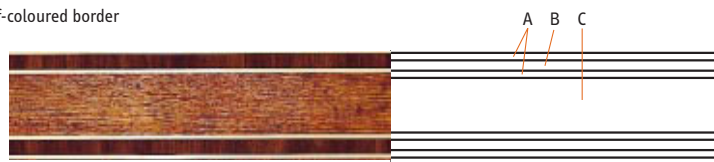
B27B Bevelled Diamond Border ♦ 76mm x 915mm (3" x 36")
Products Featured: A) SD44 B) SD14 C) SD44

A B C

♦ Can be used as a self-coloured border



C51 Art Deco Corner



B51 Art Deco Border 89mm x 915mm (3 1/2" x 36")
Products Featured: A) MP78 B) WX701E C) W719E

A B C

Corner not shown to scale



B20 Narrow Inlaid Border 76mm x 915mm (3" x 36")

Products Featured: A) WX701E B) W699E

A B



C38 Ivy Leaf Corner



B38 Ivy Leaf Border 76mm x 915mm (3" x 36")

Products Featured: A) W684E B) WX680E C) W682E D) W681E E) W684E F) W680E

A B C D E F



C13 Marquetry Corner



B13 Marquetry Border 76mm x 915mm (3" x 36")

Products Featured: A) W701E B) MP19 C) W709E D) W703E E) W700E F) W699E

A B C D E F



C27 Narrow Diamond Corner



B27 Narrow Diamond Border 76mm x 915mm (3" x 36")

Products Featured: A) WX701E B) W699E C) W701E

A B C



C15 Fleur Corner



B15 Fleur Border 76mm x 915mm (3" x 36")

Products Featured: A) NM5CT B) RM54CT C) OM53CT D) RM54CT E) NM5CT

A B C D E



C33B Square Peg Corner



B33B Square Peg Border 76mm x 915mm (3" x 36")

Products Featured: A) MP98 B) MP99 C) W682E D) MP98 E) W682E F) MP99

A B C D E F



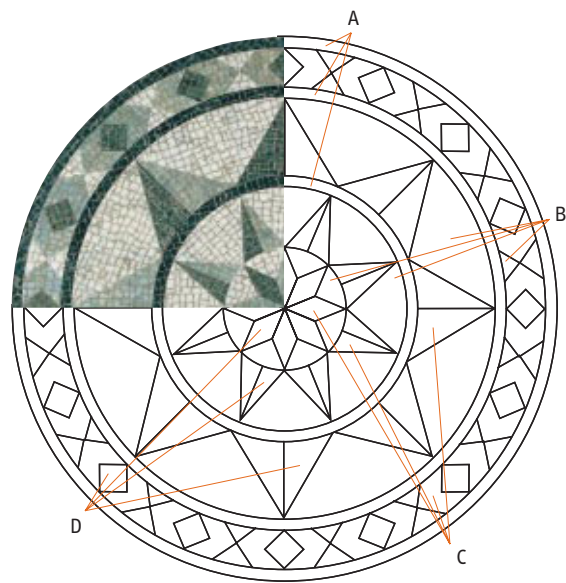
C14 Narrow Gordian Corner



B14 Narrow Gordian Border 64mm x 915mm (2 1/2" x 36")

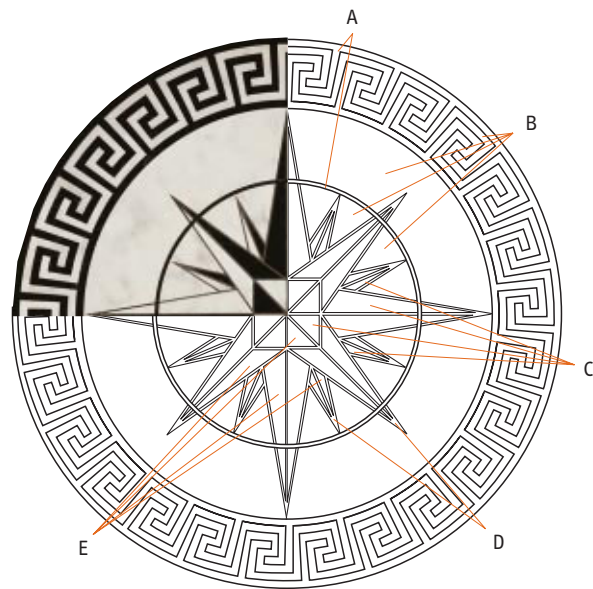
Products Featured: A) MQR45 B) CN138Q C) CN447Q D) CN138Q E) CN83Q

A B C D E



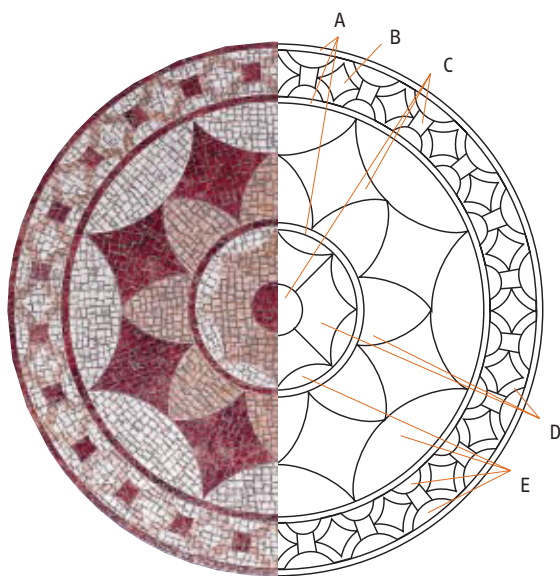
MC10B Medici Motif*
 902mm (35 1/2") diameter approx
 Products Featured: A) NM7M B) SM6M C) RM81M D) CD89M

A B C D



MC12 New Zeus Star Motif
 890mm (35") diameter approx
 Products Featured: A) NM2CT B) BM12CT C) BM12CT D) DMP38 E) NM2CT

A B C D E



MC11B San Marco Motif*
 890mm (35") diameter approx
 Products Featured: A) NM5M B) BM12M C) NM5M D) RM54M E) BM12M

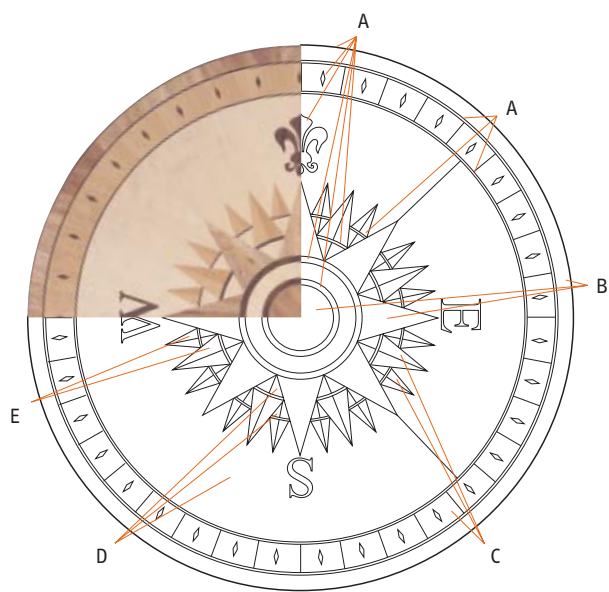
A B C D E



ABC Panel DES 858N
 1220mm x 2133mm (48" x 84") approx
 Products Featured: A) GZ51 B) GZ915 C) GZ11 D) GZ777

A B C D

Motifs are not shown to scale.



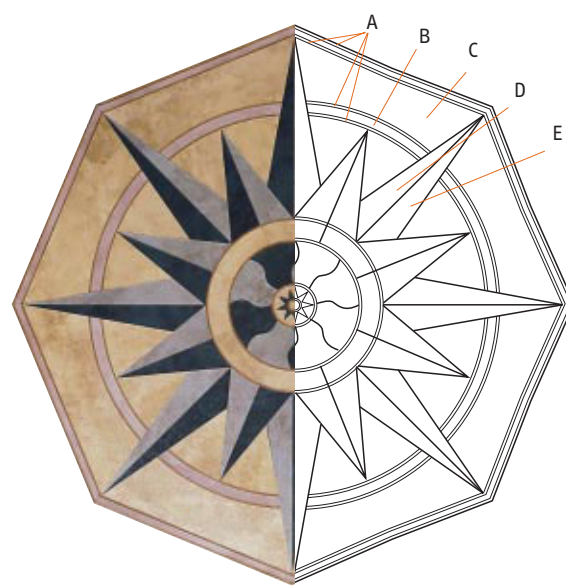
MC8 Compass Motif

MC8 (Large) 1700mm (67") diameter approx

MC8S (Small) 850mm (33 1/2") diameter approx

Products Featured: A) W701E B) W599E C) W684E D) W682E E) W706E

A B C D E

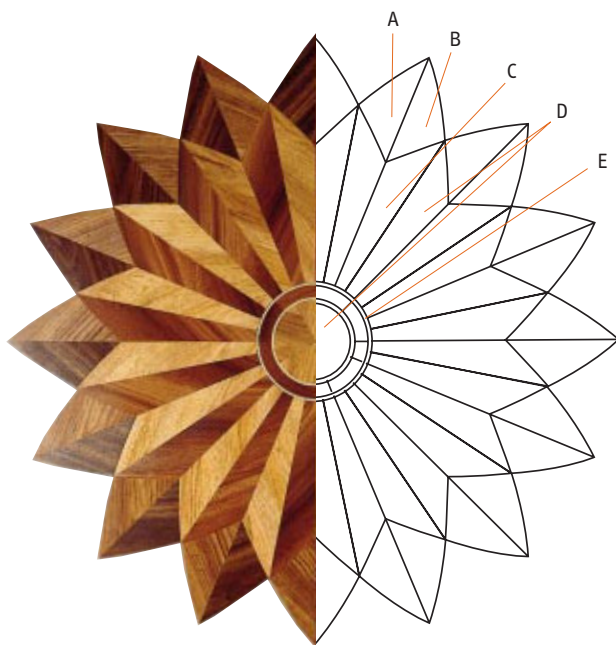


MC6 Octagon Star Motif

890mm (35") diameter approx, across points

Products Featured: A) MQR74 B) CN34Q C) CN447Q D) CN83Q E) CN138Q

A B C D E

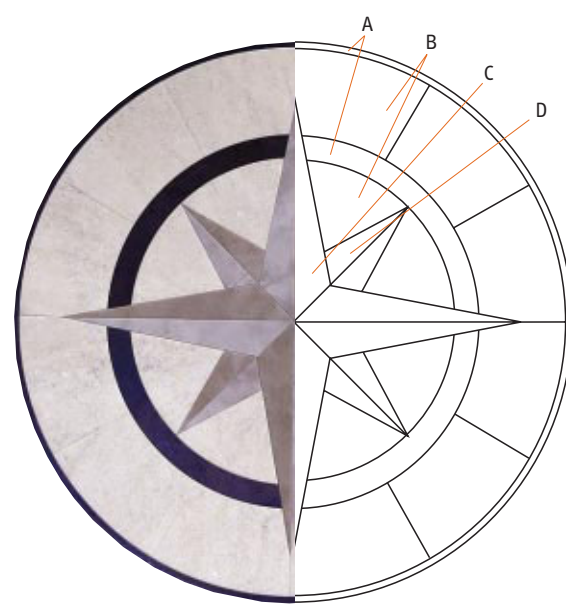


MC13 Apollo Motif

890mm (35") diameter approx across points

Products Featured: A) W701E B) W700E C) W707E D) W699E E) MP78E

A B C D E



MC3 Small Star Motif

610mm (24") diameter approx

Products Featured: A) MT232 B) LJ47 C) CN139Q D) CN30Q

A B C D

www.amtico.com

SHOW ME

Installation

General information

Manufacturer's instructions must be followed when using proprietary materials for floor preparation.

Amtico can be installed on concrete, timber, stone and many other sub-floors which have been suitably prepared. Existing resilient floors must be removed and the sub-floor re-levelled. Some resilient floor tiles and adhesives can contain asbestos - in cases of doubt when removing existing tiles, contact the relevant local authority for advice on removal and disposal of flooring products containing asbestos. Alternatively, it may be possible to cover the existing floor with 6mm plywood.

Amtico must not be installed externally or in unheated locations. Amtico is suitable for use with underfloor heating which should be switched off for 48 hours before and after installation.

It is preferable to protect the floor from heavy traffic for 24 hours after installation. Floors must not be washed for 48 hours.

Sub-floor preparation

Site conditions must comply with the requirements of BS8203:2001, the Code of practice for the installation of floor coverings. It is normally the responsibility of the main contractor to ensure the floor is fit to receive a resilient floor covering.

To ensure good quality appearance and adhesion, the sub-floor must be hard, smooth, clean, dry and free from defects. Use of a suitable levelling compound in accordance with manufacturer's instructions will ensure that no irregularities show through to the surface of the finished floor. For all installations, Amtico recommends the use of a cementitious, water-based levelling compound. Direct to earth concrete and stone sub-floors must incorporate an effective damp proof membrane to ensure that they are sufficiently dry.

Concrete (new): can contain a high percentage of residual moisture and should be allowed sufficient time to dry thoroughly. When it is impractical to wait until the base has fully dried, the use of a suitable surface damp-proof membrane (DPM) is acceptable. Note that, once fully cured, the DPM must be primed before a water-based self-levelling compound is applied. The supplier of the levelling compound will advise on a suitable primer.

Concrete (old): must be cleaned of all paint, grease, wax and any other foreign matter. A suitable levelling compound should then be used to produce a smooth and level surface, with good bonding between concrete and levelling compound.

Terrazzo/Stone: worn or damaged areas must be repaired. The surface must be thoroughly cleaned and may require levelling using a suitable levelling compound.

Timber: must be overlaid with minimum 6mm exterior grade plywood, which must be suitably secured. All joints must be filled with a suitable smoothing compound to ensure that a good quality surface is produced.

Installation

Tiles, adhesive and sub-floor should be allowed to stabilise to constant temperature conditions (18-27°C) for a period of 24 hours before and after installation. Tiles must be stored flat. Select the appropriate adhesive for the installation (see under Recommended Adhesives), ensuring that the adhesive has been protected from frost during storage. Use the trowel notch size as recommended and do not use worn trowels.

Follow the instructions on the packaging and roll the floor with a 45 kg roller before the adhesive has completely set to ensure a good bond between tile, adhesive and sub-floor. Do not walk on tiles freshly installed for 5-6 hours. Clean away excess adhesive before it is allowed to dry. Use a soft cloth moistened with Amtico Adhesive Remover for removing SF Adhesive and methylated spirits or denatured alcohol for removing Universal 2-Part Adhesive.

Recommended adhesives

It is imperative that the correct adhesive is selected. For the majority of installations, Amtico SF Adhesive, a one-part off-white, acrylic adhesive is the recommended product for installing Amtico vinyl floor coverings. However, there are certain locations where a rigid-set adhesive system must be used.

In areas subject to excessive heat or moisture, for example adjacent to plate glass windows, exposed to sunlight, or in shower rooms, Universal 2-Part Adhesive from the Amtico Company, a solvent-free two-part rigid - set adhesive, must be used.

Always comply with and follow all relevant health and safety regulations relating to the use of adhesives.

Maintenance

General information

Appropriate maintenance procedures will help preserve the appearance and extend the service life of an Amtico floor. The frequency of maintenance will depend on the amount and type of traffic, degree of soiling and the floor colour and type.

The policy of The Amtico Company is to recommend only maintenance systems which are underwritten by the manufacturer and which are easy to use. Further details on the maintenance products can be found in our Technical Manual.

Initial cleaning

Sweep the floor to remove any dirt or residue. Remove wet adhesive as recommended in the Installation section. Clean the floor thoroughly using a proprietary cleaner/maintainer in accordance with the instructions on the packaging. For floors requiring the application of a dressing, initial cleaning should be carried out using a suitable floor dressing remover. When dressings are used, we would recommend that at least two coats are applied of a sateen or low-gloss product.

Note: Amtico's Super Tough Finish does not require dressing.

Maintenance in commercial installations

For details of our general recommendations for regular maintenance please refer to The Amtico guide to the "Routine Maintenance of Amtico Floors in Commercial Premises" machine or manual system.

For areas where greasy spills are possible, a mildly alkaline cleaner may be required. For larger areas, a scrubber drier or rotary buffing machine with a blue 3M pad is recommended.

Floors without dressing should be regularly cleaned by either mopping or using a scrubber drier or rotary buffing machine filled with neutral detergent and a blue 3M pad. If dressing has been applied use a scrubber drier or rotary buffing machine with a red 3M pad.

Periodically the floor will have to be stripped and re-coated with dressing.

Failure to implement an effective regular maintenance programme will not only detract from the appearance of the floor but may perhaps shorten its useful life.

Maintenance precautions and safety information

A slippery floor can cause accidents. This can be caused by poor maintenance, surface contamination or when the floors are wet. All hard floors can be slippery when wet. Take extra care to ensure the floor is dry before use is resumed. In wet weather ensure that plenty of entrance matting is used and that any contaminants including water that get onto the floor are mopped up immediately. In commercial areas the use of warning signs are recommended.

Surface contamination can be caused by products such as fat, grease, furniture polish, glass cleaner, airborne insecticide, disinfectant, perfume spray and other foreign matter. Spillages should be cleaned up immediately by firstly wiping with absorbent paper, and then thoroughly mopping with a dilute detergent solution.

The floor should then be rinsed and allowed to dry.

Note: Amtico's Super-tough finish does not require dressing and should not be buffed with any pad more abrasive than a 3M red pad.

Specification

1. Scope

A. Furnish materials, labour, and equipment necessary to complete vinyl tile flooring and related work as required on architectural drawings and/or Amtico Company Limited installation instructions.

2. Materials

A. The flooring shall be manufactured by The Amtico Company Limited (Amtico).

B. The manufacturer of the flooring product must be accredited to both ISO 9002 (Quality Management System) and ISO 14001 (Environmental Management System).

C. Product: Shall meet or exceed the performance characteristics specified under BS EN 649.

Thickness shall be 2.5mm

Wear Layer shall be 1.0mm in thickness

Style and sizes shall be as per the published Amtico Product Reference Guide.

3. Structural

A. Fire Resistance: Amtico products meet the requirements of BS 476 Class 2 and DIN 4102 Class B1.

B. Residual Indentation: The product will have a residual indentation of 0.04mm or less when tested in accordance with EN433.

C. Slip Resistance: The product, when tested to DIN 51130, will meet or exceed the R9 classification.

4. Preparation of Surface

A. For satisfactory performance, the surface must be cleaned of all foreign material which may be detrimental to the adhesion of the flooring. If patching or levelling is required a cementitious patch must be used.

B. Thoroughly sweep or vacuum surface before installation.

5. Installation of Material

A. Installation procedures should comply with BS 8203 (British Standard Code of Practice for the installation of sheet and tile flooring) and be in strict accordance with The Amtico Company's published Technical Manual and shall not begin until the work of all other trades has been completed.

B. Handle and store product according to Amtico recommendations. Leave material in unopened

labelled, original cartons until needed. Store at temperatures between 18°C and 27°C for at least 48 hours before, during and after installation.

C. The adhesive will be Amtico SF or Universal 2-part Adhesive. The appropriate Amtico adhesive is required for all installations involving Amtico products.

6. Maintenance

A. After the floor has been installed it should be cleaned as per Amtico maintenance instructions.

Technical Data

Slip DIN 51130: class R9 ADA: pass	Light Stability ISO 105 B02: 7 or better	Wear Layer Thickness EN 429: 1.0mm
Residual Indentation EN 433: 0.04mm Fed Spec SS-T-312B Type 3: <8%	Dimensional Stability EN 434: <0.25% Fed Spec SS-T-312B Type 3: <0.020" per ft	Wear Group Classification EN 649: class 34,43
Abrasion Resistance EN 660-1 (thickness loss): 0.077mm	Thermal Resistance DIN 52612: 0.021 Km ² /W	Castor Chair Resistance EN 425: pass
Chemical Resistance DIN 51958: very good Fed Spec SS-T-312B Type 3: very good	Flexibility EN 435: pass Fed Spec SS-T-312B Type 3: pass	Underfloor Heating Suitable
Sound Reduction DIN 52210: 4db	Flammability IMO A653 (16): pass DIN 4102: class B1 ASTM E648: 9.6 KW/m ² ONORM 3800/3810: class Q1/B1 ASTM E84: flame spread 31	NT Fire 007: class G BS 476 Part 7: class 2 Swiss: class 5.3 French: class M3

Contact Us

Where to find us

For further advice, technical know-how and pure inspiration, visit one of our Studios.



IDX 617, 618

UNITED KINGDOM

The Amtico Studio
18 Hanover Square
London
W1S 1HX

The Amtico Studio
Epsom Business Park
Kiln Lane
Epsom
Surrey
KT17 1DH

UK ENQUIRIES

Tel: +44 (0) 24 7686 1498
Fax: + 44 (0) 24 7686 1583
info@amtico.co.uk

UNITED STATES

Amtico International Inc.
The Amtico Studio
6480 Roswell Road
Atlanta, GA 30328

Tel: + 1 404 267 1900
Fax: + 1 404 267 1901

Amtico International Inc.
The Amtico Studio
200 Lexington Avenue
Suite 809
New York, NY 10016

Tel: + 1 212 545 1127
Fax: + 1 212 545 8382

US ENQUIRIES

1 800 370 7324
info@amtico.com

GERMANY

Amtico International GmbH
The Amtico Studio
Im Taubental 11
41468 Neuss - Grimlinghausen

Tel: +49 (0) 2131 359 160
Fax: + 49 (0) 2131 359 1650
info@amtico.de

FRANCE

Amtico International SA
The Amtico Studio
25 rue de Sèvres
92100 Boulogne
Paris

Tel: +33 (0) 1 55 38 95 70
Fax: +33 (0) 1 55 38 95 71
info@amtico.fr

REST OF EUROPE ENQUIRIES

+44 (0) 24 7686 1501
info-europe@amtico.co.uk

SWEDEN

Amtico International AB
Box 6057, Skälbyvägen 16
S - 175 06
Järfälla

Tel: +46 (0) 8 584 233 24
Fax: +46 (0) 8 584 233 30
info@amtico.se

AUSTRALIA

Amtico International Pty Limited
PO Box 297
Chatswood
Sydney, NSW 2057

Tel: +61 (0) 2 9415 0200
Fax: +61 (0) 2 9417 3344
info@amtico.com.au

www.amtico.com

ADVISE ME



While every effort is made to achieve accurate colour reproduction of products in this brochure, printing limitations can be misleading. Selection of colours should be made from actual samples. Samples are small pieces cut from standard tiles. They give only a general indication of colour and do not necessarily show the complete design. Colour and shading can vary slightly from batch to batch, and it is not possible to guarantee that the colour of the sample will exactly match the material supplied.

The policy of the Company is one of continuous development and improvement and the right is reserved to add or delete from the range or to change patterns without prior notification.

