

Installation instructions for Nätura 15mm wood flooring with Woodloc

1. Begin in one corner, and work from left to right with the tongue sides of the boards towards the wall. **Check every board carefully before installation for any minor manufacturing imperfections. We cannot consider any claims regarding product defects after installation, although with all natural products small blemishes can be expected and used as cuts from your wastage allowance.**
2. The gap between the long side and the wall can be adjusted later when three rows have been laid. Remember that it's often simpler to start the row of boards at the door.
3. Press the next floorboard in at an angle against the first board. Continue in the same way along the rest of the first row.
4. Cut the last board in the first row to the correct length, and begin the next row with the left over piece. The end joints between boards must be staggered by a minimum of 500 mm (minimum of 300 mm for 1.2 metre boards). At least every second row of boards must have an end joint.
5. Press the floorboard in at an angle against the board in front. Using the block, lightly tap the board while pressing it down.
6. Push a laying wedge in under the end of the board already laid.
7. Press the end of the next board into position at an angle.
8. Using the block, tap on the long side whilst carefully pressing the board down. This will locate it more easily.
9. The gap between the floor and the walls can be adjusted when three rows have been laid. Place wedges between the floor and wall **a minimum of 10mm must be left for expansion.**
10. The first row sometimes requires adjustment to suit a wall that is out of true. Draw the contours of the wall on the floorboards. Then detach the boards in the first row by gripping the long side and pulling upwards while tapping gently against the joint. Saw along the line you drew.
11. Then replace the sawn floorboards from left to right. Push the end in first and then long side, as described in points 5-7.
12. Place wedges between the floor and wall.
13. Drill holes in the boards for radiator pipes. The diameter of the holes must be at least 20 mm bigger than the pipe. Cut out according to the illustration. When fitting the board, glue the cutout in position and cover the holes with pipe collars.
14. If you need to trim an architrave, use a floorboard as a guide to get the correct height. If you need to tap the board lengthways, use an end off-cut to protect the joint.
15. The last row of boards must be cut to the correct width. Rest the last board on top of the last but one row of boards, offset towards the wall by about 5 mm. Mark where the saw cut should be, using an off cut with no locking moulding. Lay the cut board. Do the same with the next one.
Fit the skirting boards without trapping the floor. Use level mouldings or edge mouldings at transitions to other rooms. If you plan to carry out more building work in the room, remember to protect the floor with moisture-permeable material.
16. If necessary, you can lay boards from any direction. Woodloc is also easy to take up. This helps when lying at doors. Proceed as follows if it is not possible to angle a board in under an architrave or low radiator, for example:
 - Cut away 2/3 of the locking edge.
 - Glue. Push the board into position. Woodloc cannot be laid end-on against the long side.

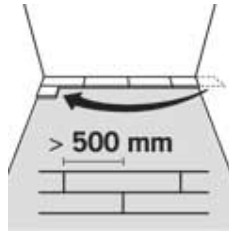
Tip: Although the long sides can be fitted together only by angling in a board, the short ends can be knocked together using a tapping block once the boards are lying flat against the sub floor. This may be necessary at doors, for example, or in other difficult places where the board needs to be slid into place. When a board has to be tapped in lengthways, cut a small off-cut from the end of a board, which then fits into the joint and protects the end of the board from being damaged.



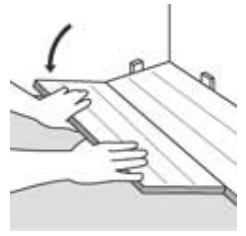
1.



2.



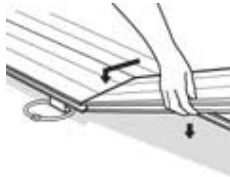
3.



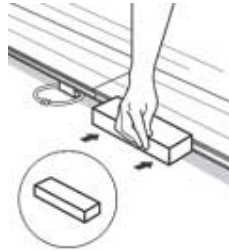
4.



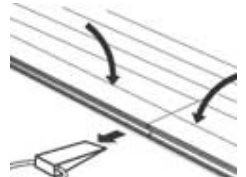
5.



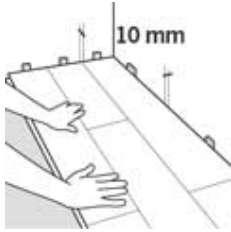
6.



7.



8.



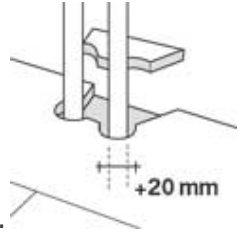
9.



10.



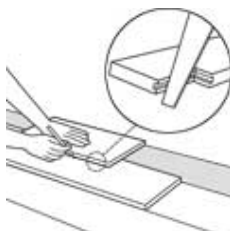
11.



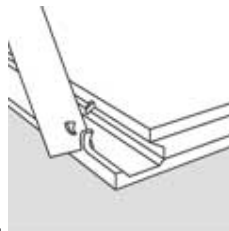
12.



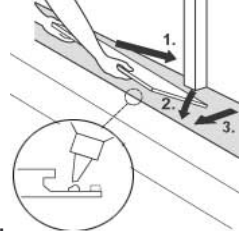
13.



14.



15.



16.