

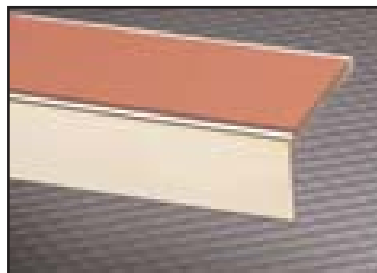
CI/Stb	(44)	Hh	

Specialist Floor Trims,
Stair Nosings and Stair Rods

SEPTEMBER 2003



www.cat-accs.com



The Comprehensive CAT



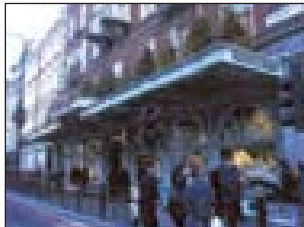
COMPANY PROFILE



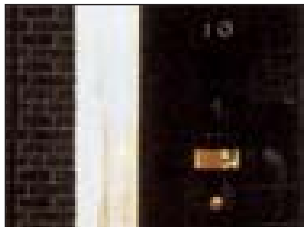
Houses of Parliament



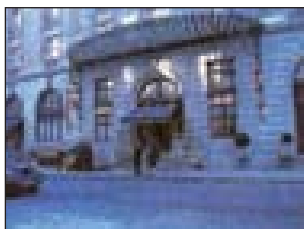
Royal Opera House



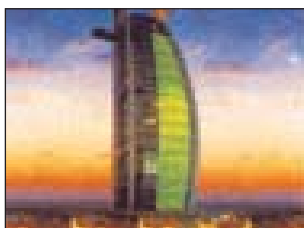
Fortnum and Mason



No. 10 Downing Street



The Ritz



Arabian Tower Hotel - Dubai

English



C.A.T. was formed in 1986 and in the 17 years of trading has become regarded as the people who originally made innovation and service priorities.

With our philosophy, to take an idea and expand upon it, we have designed and produced the widest range of brass flooring products in the U.K. and have now achieved the same with stainless steel.

We pioneered plate finishes on stair rods, stair nosings and trims including antique and chrome long before others.

We were the company that said "yes we can" to the curving of trims not just stair nosings, all unavailable pre CAT. Our fabrication department now boasts state of the art computer controlled machinery and our desire to impress is as strong as ever.

Today, CAT products are specified worldwide and we enjoy an unparalleled reputation as the company to consult for bespoke and specialist trims.

Whatever the flooring, we have the solution.

Francais



La société C.A.T. a été fondée en 1986, et en 17 ans de commerce, est considérée comme la société qui dès l'origine a donné la priorité à l'innovation et au service.

Avec notre philosophie, de prendre une idée et de la développer, nous avons conçu et produit la gamme la plus étendue de produits de sol au laiton au Royaume-Uni et nous l'avons réalisé également en acier inoxydable.

Bien avant les autres, nous étions les pionniers des finitions plaquées sur tringles pour passages d'escaliers, nez de marches et profilés de finition, y compris des finitions au style antique et à base de chrome.

Nous étions la société qui a dit 'oui, nous pouvons' au cintrage des profilés de finition et pas seulement aux nez de marches, tout ce qui n'était pas disponible avant l'existence de CAT. Aujourd'hui notre service de fabrication est fier de posséder des machines qui sont contrôlées par ordinateur de dernier cri, et notre désir d'impressionner est aussi fort que jamais.

De nos jours, les produits CAT sont préconisés dans tout autour du monde, et nous jouissons d'une réputation sans égal d'être la société à consulter pour les profilés de finition spécialisés et sur commande.

Quel que soit le revêtement de sol, nous avons la solution.

Deutsch



Die Firma C.A.T. wurde im Jahre 1986 gegründet und hat sich in ihren 17 Geschäftsjahren einen Ruf als DAS Unternehmen erworben, bei dem Innovation und Service an erster Stelle stehen.

Ausgehend von unserer Philosophie, eine Geschäftsidee optimal weiterzuentwickeln, haben wir das reichhaltigste, in Großbritannien angebotene Sortiment an Messingprodukten für Fußböden entworfen und produziert und haben jetzt auch Gleiches mit rostfreiem Stahl erzielt.

Wir haben auf dem Gebiet der Metallbeschichtung von Treppenläuferstangen, Treppenkantenschutz und Besätzen (darunter verchromt und im antiken Stil) Pionierarbeit geleistet.

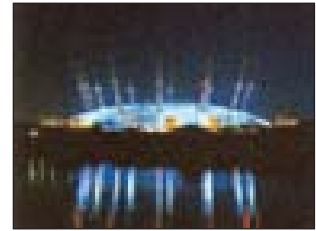
Uns gelang, was vor uns noch niemand angeboten hatte: das Biegen von Besätzen, nicht nur von Kantenschutz. Unsere Fertigungsabteilung verfügt über modernste, computergesteuerte Maschinen, und wir sind ständig bestrebt, unseren Kunden einen erstklassigen Service zu bieten.

C.A.T.-Erzeugnisse sind heute weltweit spezifiziert, und unser Ruf als Anbieter von Maß- und Spezialbesätzen ist unübertroffen.

Wir haben die Lösung für JEDEN Fußboden!

Completed Projects

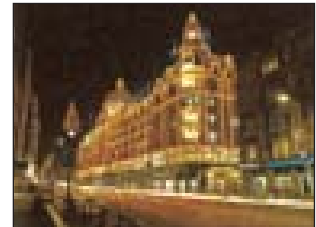
Projects, which C.A.T. have been proud to be suppliers to include: The Liberal Club, The Foreign Office, The RAC Club, The Savoy Theatre, BT2000, The Royal Pavillion Brighton, Channel Four, Jersey Opera House, Citibank, ITN, Heathrow Airport, British Library, The Belfry, Victoria and Albert Museum.



Millennium Dome



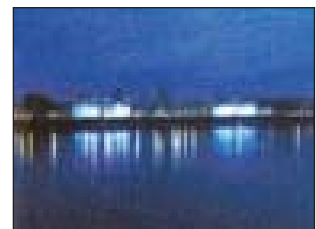
The BBC



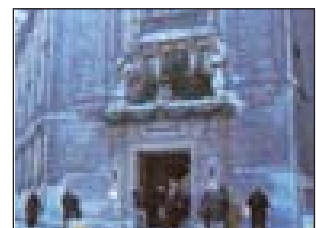
Harrods



The Barbican Centre



Royal Naval College



Four Millbank

C.A.T. Limited

Unit 24C, Park Avenue Estate, Sundon Park
Luton, Beds LU3 3BP. United Kingdom

Tel: +44 (0)1582 561500 Fax: +44 (0)1582 561900

Email: sales@cat-accs.com Website: www.cat-accs.com



FLOORING PROFILES

Twin-top Single Leg Profiles	1.1
Twin Profiles	1.2
Single Trims	1.3-4
Cover Plates - Brass	1.5
Cover Plates - Stainless Steel	1.6
Cover Plates - Aluminium	1.7
Ramp Trims	1.8-9
Edgings and Angles	1.10
Edgings and Angles - Formable	1.11
Edgings and Angles - Matwells	1.12
Timberline	1.13
TOB Clip-in Systems	1.14-15
Special Finishes for Floor Trims	1.16
Fabrication - Floor Trims	1.17
Cat Walk Formable Trims	1.18



WALL AND CORNER PROFILES

Corner Protectors	2.1
Capping Profiles and Skirting Trims	2.2



STAIR NOSINGS AND EDGINGS

Stair Nosings Technical Information	3.1-2
Stair Nosings - Brass	3.3-6
Stair Nosings - Jag Stainless Steel	3.7-8
Stair Nosings - Aluminium	3.9
Stair Nosings - Infill	3.10
Stair Nosing Trimming Edges	3.11
Stair Nosing Fabrication	3.12



STAIR RODS AND FIXING EYES

The Akeman Collection - Stair Rods and Fixing Eyes	4.1
The Akeman Collection - Brass, Stair Rods and Eyes	4.2
The Akeman Collection - Brass, Copper, Steel, and Stair Clips	4.3
The Akeman Collection - Fixing Eyes, Brass, Copper, Steel	4.4
The Akeman Collection - Special Finishes	4.5
The Akeman Collection - Fabrication and Special Products	4.6
The Akeman Collection - Pre-pack Range	4.7



PURCHASE ORDER TEMPLATES

5.1-3



TERMS AND CONDITIONS

IBC

With our policy of product development C.A.T. reserve the right to make product changes in this catalogue. Please check, when ordering, of any changes to products required. For further information refer to CAT Terms and Conditions on the inside back cover.



EASY PRODUCT INDEX

Flooring Profiles		Page			Page			Page
A4.5		1.10	Feline 2		1.2	Timberline 4/1510		1.13
A6.5		1.10	Feline 3		1.1	Timberline 4/2210		1.13
A9		1.10	Feline 4		1.2	TOB1		1.14
A13		1.10	Feline 5		1.2	TOB101		1.14
A16		1.10	Feline 9		1.4	TOB111		1.14
A19		1.10	Feline A/10		1.1	TOB121		1.14
A22.5		1.10	Feline A/13		1.1	TOB131		1.14
A25		1.10	Feline A/9/2		1.2	TOB2		1.14
A25HD		1.10	Feline Edge		1.4	TOB102		1.14
A50		1.14	Feline S1		1.1	TOB112		1.14
A50		1.15	Feline S13		1.1	TOB122		1.14
AC38		1.7	Feline S2		1.2	TOB132		1.14
AC45		1.7	Feline ST		1.2	TOB3		1.15
AC55		1.7	Feline T		1.2	TOB103		1.15
AC80		1.7	FTRS12		1.9	TOB113		1.15
AC82		1.7	FTS10		1.10	TOB123		1.15
AC100		1.7	Mainline 1		1.10	TOB133		1.15
AC135		1.7	Mainline 2	1.1/1.10		TOB4		1.15
AEP1		1.7	Matwells		1.12	TOB104		1.15
AEP2		1.7	P8		1.14	TOB114		1.15
AR8		1.8	P8		1.15	TOB124		1.15
AR12		1.8	P12		1.14	TOB134		1.15
AR63		1.8	P12		1.15	TOB105		1.14
AR63		1.12	P16		1.14	TOB115		1.14
B155		1.5	P16		1.15	TOB125		1.14
B4.5		1.10	P20		1.14	TOB135		1.14
B6.5		1.10	P20		1.15	TT Mainline 1		1.11
B9		1.10	S155		1.6	TTA4.5		1.11
B13		1.10	S6.5		1.10	TTA6.5		1.11
B16		1.10	S9		1.10	TTA9		1.11
B19		1.10	S12		1.10	TTA13		1.11
B22		1.10	S16		1.10	TTA16		1.11
B25		1.10	S19		1.10	TTA19		1.11
B25HD		1.10	S22		1.10	TTA22.5		1.11
BA		1.12	S25		1.10	TTA25		1.11
BC30		1.5	SA		1.12	TTB4.5		1.11
BC38		1.5	SC30		1.6	TTB6.5		1.11
BC55		1.5	SC38		1.6	TTB9		1.11
BC82		1.5	SC55		1.6	TTB13		1.11
BEP1		1.5	SC60		1.6	TTB16		1.11
BEP2		1.5	SLE		1.9	TTB19		1.11
BLE		1.9	SME		1.12	TTB22		1.11
BME		1.12	Special Finishes		1.16	TTB25		1.11
BN10	1.5/3.5		SR8		1.9	TTS6.5		1.11
BNF		1.3	SR9		1.9	TTS9		1.11
BNR		1.3	SR12		1.9	TTS12		1.11
BR1		1.8	SR14		1.9	TTS16		1.11
BR2		1.8	SR20		1.9	TTS19		1.11
BR3		1.8	SS10		1.4	TTS22		1.11
BR4		1.8	SSE		1.4	TTS25		1.11
BR8		1.9	SSEP1		1.6	Wall & Corner Profiles		
BR9		1.9	SSEP2		1.6	AC50/50		2.2
BR12		1.9	SSNF		1.3	B CAP		2.2
BR14		1.9	Timberline 1		1.13	CAP IT		2.2
BR20		1.9	Timberline 1/12		1.13	SC50/50		2.2
BSE		1.4	Timberline 1/15		1.13	S CAP		2.2
BSE2		1.4	Timberline 1/22		1.13	SSE		2.2
BTG1		1.2	Timberline 2		1.13	Technical		3.1
BTG2		1.2	Timberline 2/12		1.13	Vertex 1A		2.1
BTG2/SL		1.1	Timberline 2/13B		1.13	Vertex 1S		2.1
CAP IT		1.4	Timberline 2/15		1.13	Vertex 22A		2.1
Cat 1		1.3	Timberline 2/22		1.13	Vertex 22S		2.1
Cat 2B		1.3	Timberline 3		1.13	Vertex 2A		2.1
Catwalk RT39/P8		1.18	Timberline 3/12		1.13	Vertex 2S		2.1
Catwalk T36/P8		1.18	Timberline 3/15		1.13	Vertex 31A		2.1
Fabrication		1.17	Timberline 4		1.13	Vertex 31S		2.1
Feline 1		1.1	Timberline 4/128		1.13	Vertex 3S		2.1
						Stair Nosings & Edgings		
						Vertex 41A		2.1
						Vertex 41S		2.1
						AE32		3.9
						AE32/S		3.9
						AN1		3.9
						AN2		3.9
						AN3		3.9
						AN4		3.9
						AN5		3.9
						AN6		3.9
						AN7		3.9
						BN1		3.6
						BN2		3.6
						BN3		3.3
						BN4		3.6
						BN5		3.3
						BN6		3.3
						BN7		3.6
						BN8		3.3
						BN10		3.5
						BN11		3.6
						BN12		3.3
						BN14		3.5
						BN14/10		3.5
						BN15		3.5
						BN15/10		3.5
						BN16		3.4
						BN17		3.4
						BN18		3.4
						BN19		3.4
						BN20		3.5
						BN21		3.5
						BN42		3.3
						BN52		3.3
						BN79		3.4
						BN80/2		3.6
						BN90		3.6
						Fabrication		3.12
						Jag 1/3		3.7
						Jag 1/6		3.7
						Jag 1/8b		3.8
						Jag 2/3		3.7
						Jag 2/6		3.7
						Jag 2/8b		3.8
						Jag 3/3		3.7
						Jag 3/6		3.7
						Jag 3/8b		3.8
						Nosing Infills		3.10
						SNE		3.3
						Trimming Edges		3.11
						Technical		3.2
						Stair Rods & Eyes		
						Arrow & Flight		4.2
						Copper Rods		4.3
						Fabrication - Rods		4.6
						Fixing Eyes		4.4
						Hollow Reeded		4.2
						Hollow Round		4.2
						Large Finials		4.2
						Pre-Pack Range		4.7
						Solid Round		4.2
						Special Finishes		4.5
						Stair Clips		4.3
						Stair Rods		4.1
						Steel Rods		4.3
						Triangular Rods		4.3



TWIN TOP SINGLE LEG PROFILES

(44)	Hh
------	----



Application:

Feline and Mainline edgings provide attractive finishing details from carpet to timber and ceramic floorings.

Trim heights can be adjusted with suitable packers.

Stock lengths:

Brass and Aluminium:

2.715m x 6 = Packed 16.29m

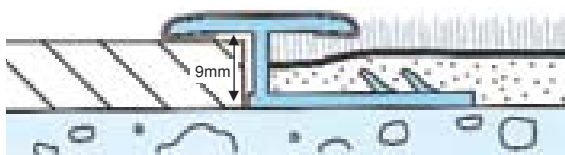
0.900m x 6 = Packed 5.40m

Stainless Steel:

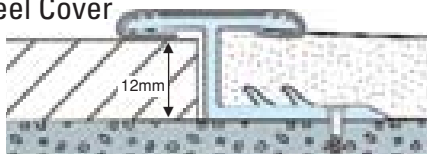
2.0m x 6 = Packed 12m

0.900m x 6 = Packed 5.40m

Feline S1 - *Patent Pending*
Stainless Steel Cover



Feline S13 - *Patent Pending*
Stainless Steel Cover

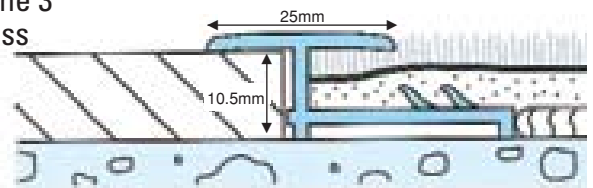


Feline™ Design © 1993

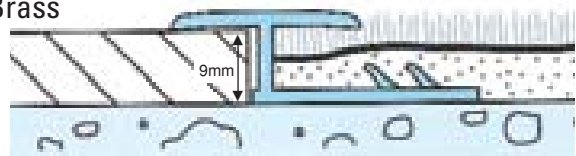
Feline profiles have a high quality polished finish and are available with matching twin base sections from the C.A.T. feline range.

Brass feline trims are available in antique brass; antique bronze; nisheen or chrome finishes. Aluminium and Stainless Steel are available as bright or brushed.

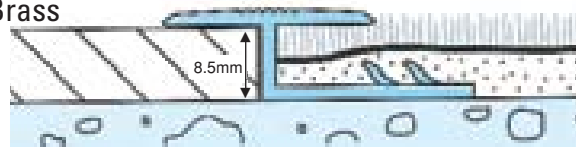
Feline 3
Brass



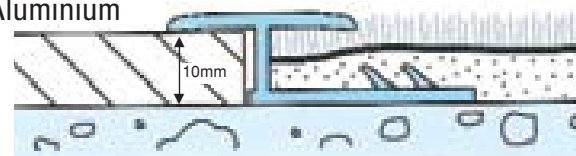
Feline 1
Brass



BTG2/SL
Brass



Feline A/10
Aluminium

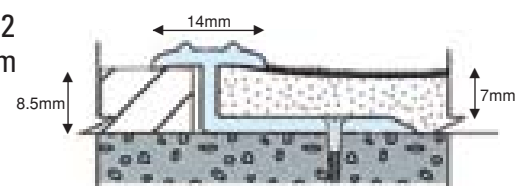


Feline A/13
Aluminium

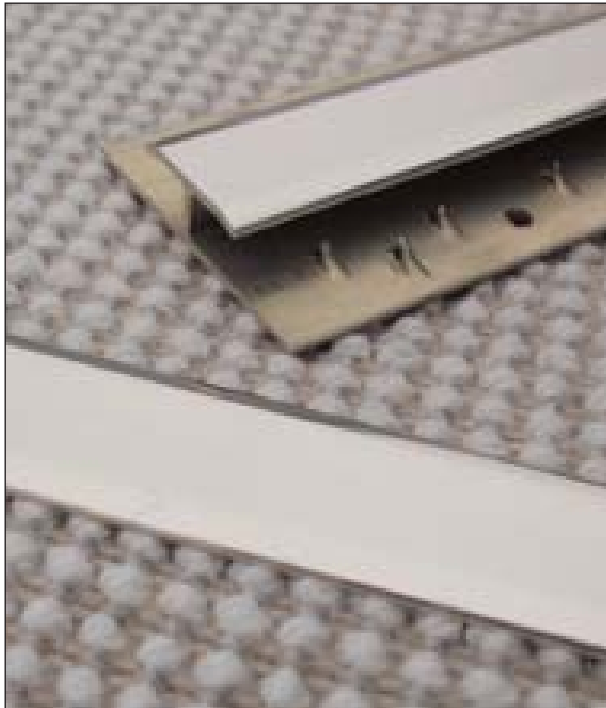


Mainline™ Design ©

Mainline 2
Aluminium



Innovators in Trim Design



Application:

Joining profiles for carpet and carpet tiles.
T sections for ceramic tiles.

Stock lengths:

Brass and Aluminium:

2.715m x 6 = Packed 16.29m

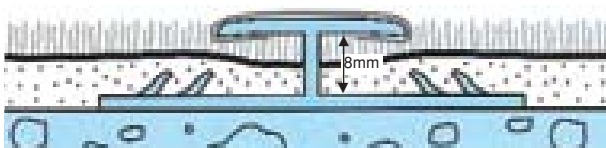
0.900m x 6 = Packed 5.40m

Stainless Steel:

2.0m x 6 = Packed 12m

0.900m x 6 = Packed 5.40m

Feline S2 - Patent Pending
Stainless Steel Cover



Feline ST - Patent Pending
Stainless Steel Cover

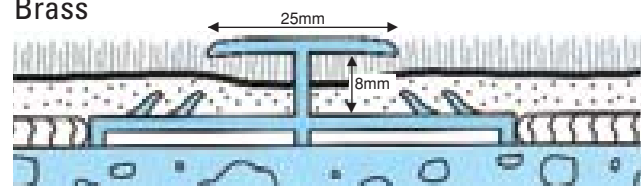


Feline™ Design © 1993

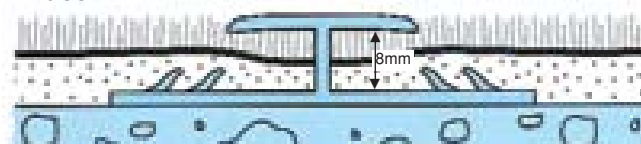
Feline profiles have a high quality polished finish and are available with matching single base sections from the C.A.T. feline range.

Brass feline trims are available in antique brass; antique bronze; nishcen or chrome finishes. Aluminium and Stainless Steel are available as bright or brushed.

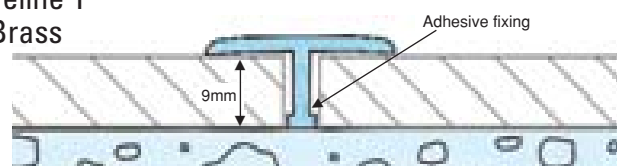
Feline 4
Brass



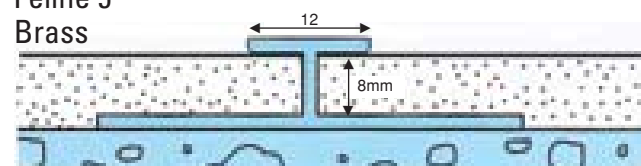
Feline 2
Brass



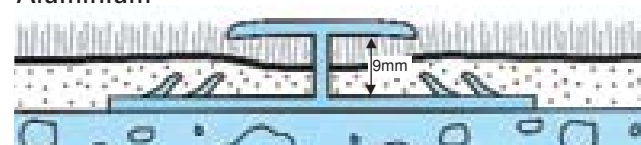
Feline T
Brass



Feline 5
Brass

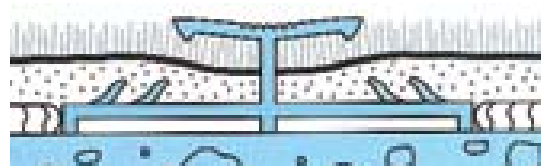


Feline A/9/2
Aluminium



BTG Designs

BTG1
Brass



BTG2
Brass

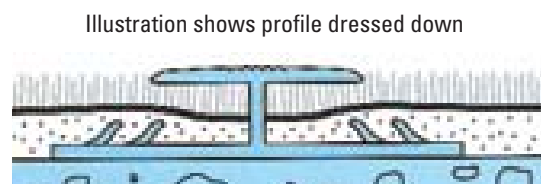


Illustration shows profile dressed down



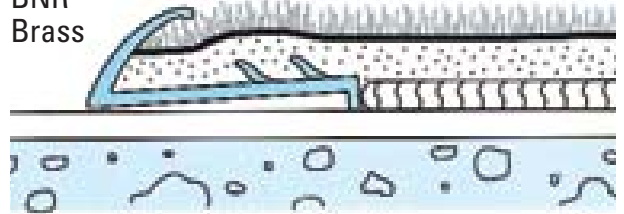


SINGLE TRIMS

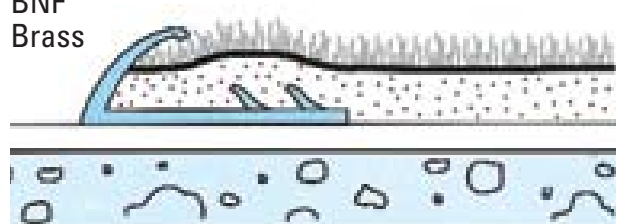


Trims for Carpet to resilient floorings

BNR
Brass

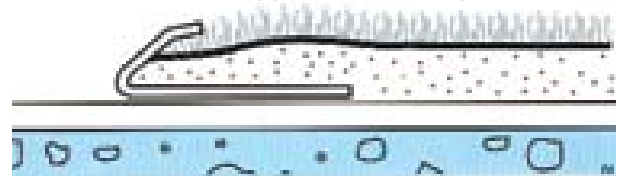


BNF
Brass



SSNF

Stainless Steel - supplied without spikes



Finishes available

Brass Trims

Antique brass ♦ Antique bronze ♦ Nisheen
♦ Chrome

Stainless Steel Trims

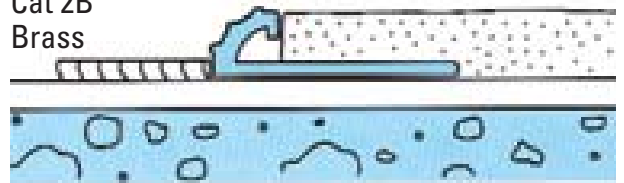
Bright ♦ Brushed

Aluminium Trims

Mill finish ♦ Syn brass

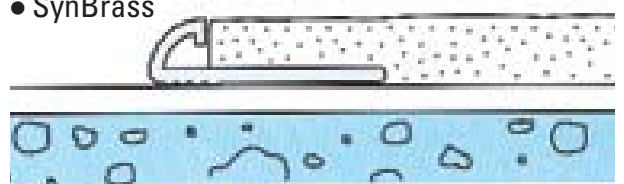
Trims for Carpet Tiles

Cat 2B
Brass



Cat 1

- Aluminium
- SynBrass



Stock lengths:

Brass: 2.715m x 6 = Packed 16.29m
0.900mm x 6 = Packed 5.40m

Stainless Steel: 2m x 6 = Packed 12m

Aluminium: 2.715m x 6 = Packed 16.29m





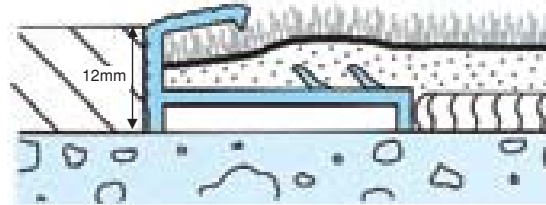
SINGLE TRIMS

(44)	Hh	
------	----	--



Trims for Carpet/Carpet Tiles to resilient floorings including ceramics.

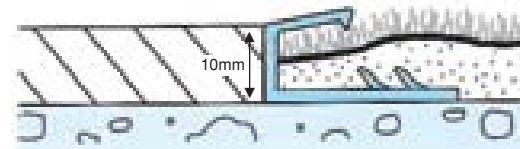
BSE2
Brass



BSE
Brass



Feline Edge
Brass



Finishes available

Brass Trims

Antique brass ♦ Antique bronze ♦ Nisheen
♦ Chrome

Stainless Steel Trims

Bright ♦ Brushed

Aluminium Trims

Mill finish ♦ Polished
♦ Syn brass ♦ Silver Anodised

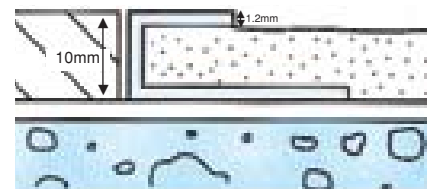
Stock lengths:

Brass: 2.715m x 6 = Packed 16.29m
0.900m x 6 = Packed 5.40m

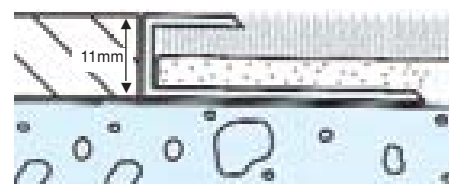
Stainless Steel: 2m x 6 = Packed 12m

Aluminium: 2.715m x 6 = Packed 16.29m

SSE
Stainless Steel



CAP IT
Aluminium



SS10
Stainless Steel



Feline 9
Brass





COVER PLATES

(44)	Hh
------	----



Finishes available

Antique brass ♦ Antique bronze ♦ Nisheen
♦ Chrome

BC38 : Stock in all finishes
Other plates to special order

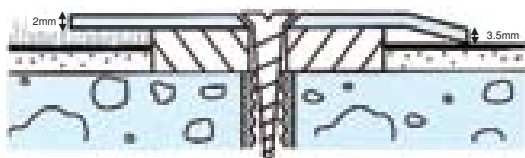
Formed brass plates

B155 ♦ BEP plates

Stock lengths:

2.0m x 6 = Packed 12m

B155



BEP Applications

Finishing plates for concealing expansion joints

BEP1 : 75mm wide

BEP2 : 100mm wide

Wider plates can be made to special order.
Please specify drilling when ordering.

Extruded brass cover plates

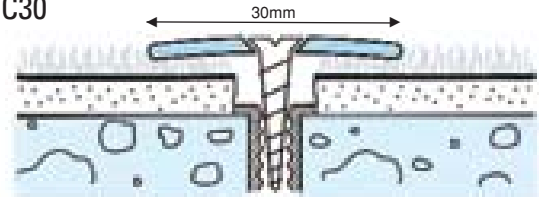
Stock lengths:

2.715m x 6 = Packed 16.29m

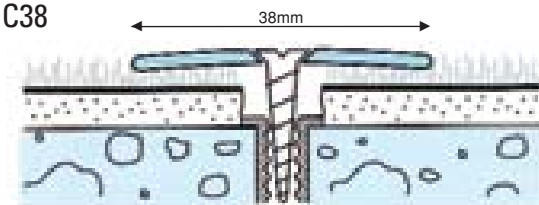
0.900m x 6 = Packed 5.40m

Supplied centre drilled for mechanical fixings. Available undrilled and offset drilled to special order.

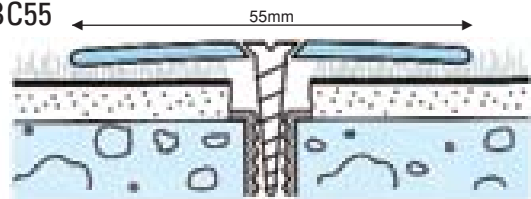
BC30



BC38



BC55

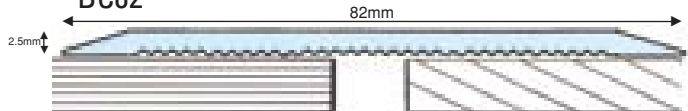


BN10 feature plate



Please specify drilling for this profile

BC82



BEP plates



can be supplied with or without bevelled edges





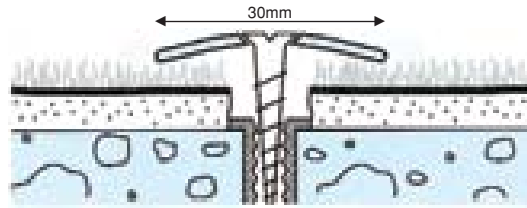
COVER PLATES

(44)	Hh	
------	----	--

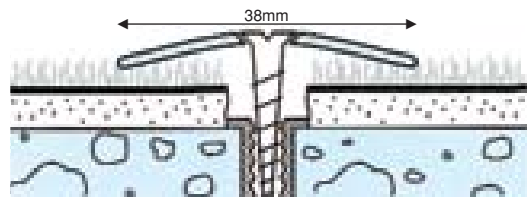


Stainless Steel Cover Plates

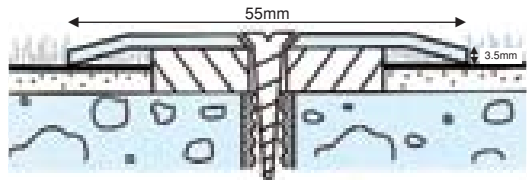
SC30



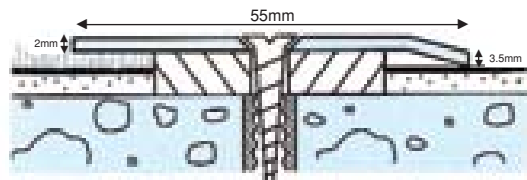
SC38



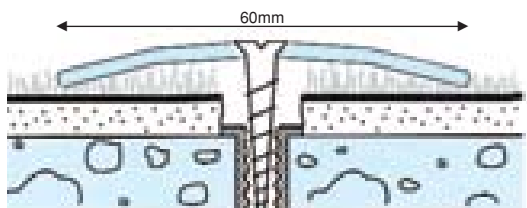
SC55



S155



SC60



Finishes available

Bright ♦ Brushed

Stock lengths:

2.0m x 6 = Packed 12m

SSEP plates



SSEP1 : 75mm wide

SSEP2 : 100mm wide

Wider plates can be made to special order.

please specify drilling when ordering
can be supplied with or without bevelled edges





COVER PLATES

(44) Hh



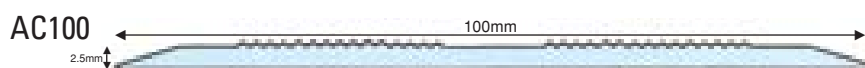
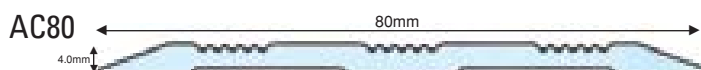
Wide aluminium cover plates

Stock lengths:

2.715m x 6 = Packed 16.29m

Finish : Silver Anodized

Please specify drilling for these plates.



AEP formed aluminium plates

Stock lengths: 2.0m x 6 = Packed 12m

Finish : Mill



AEP1 : 75mm wide

AEP2 : 100mm wide

can be supplied with or without bevelled edges



Extruded aluminium cover plates

Stock lengths:

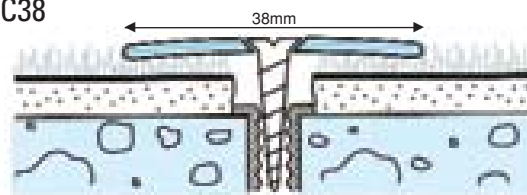
2.715m x 6 = Packed 16.29m

Supplied centre drilled for mechanical fixings. Available undrilled and offset drilled to specification.

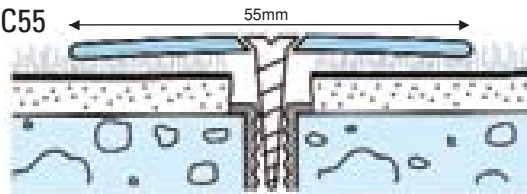
Finishes available

Mill ♦ Mirror ♦ Satin ♦ Silver Anodized

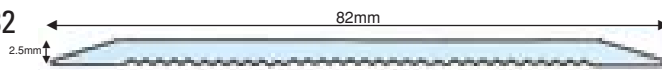
AC38



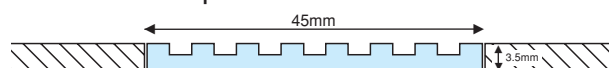
AC55



AC82



AC45 - feature plate



- Mill Aluminium
- Polished Aluminium
- Satin Aluminium



Innovators in Trim Design



RAMP TRIMS

(44)	Hh	
------	----	--



Finishes available

Brass Trims

Antique brass ♦ Antique bronze
Chrome to special order

Aluminium Trims

Mill finish ♦ Satin ♦ Polished
♦ Silver Anodized

Stock lengths:

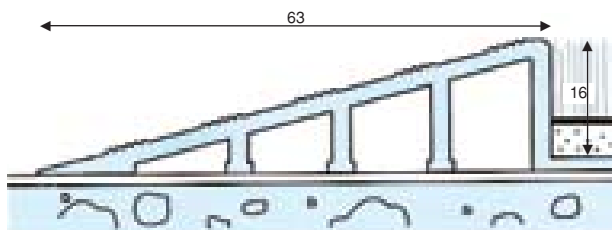
Brass: 2.715m x 6 = Packed 16.29m

Aluminium: 2.715m x 6 = Packed 16.29m

Ramp trims for barrier mats

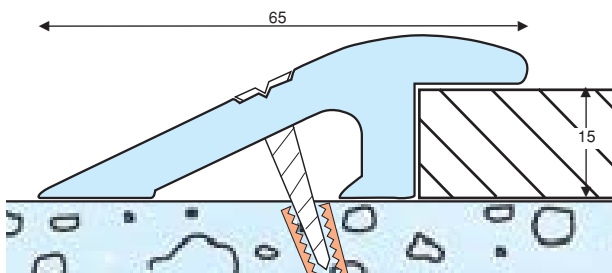
AR63

Aluminium



Titan AR65

Aluminium

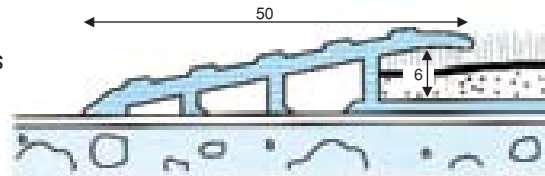


Finishing trims - where one type of flooring is higher than another adjoining floor.

Ceramics • Laminate • Carpet tiles

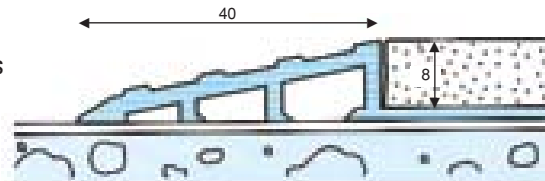
BR1

Brass



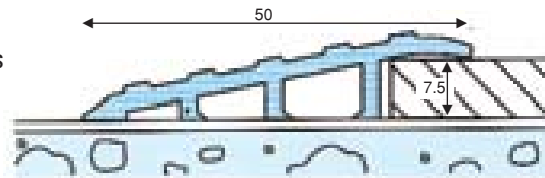
BR2

Brass



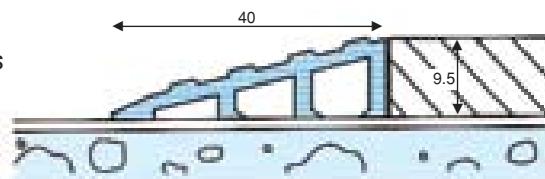
BR3

Brass



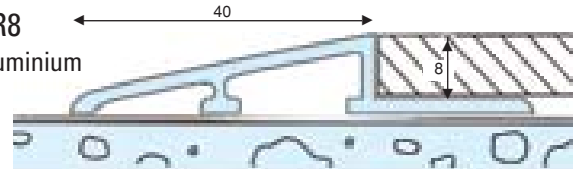
BR4

Brass



AR8

Aluminium



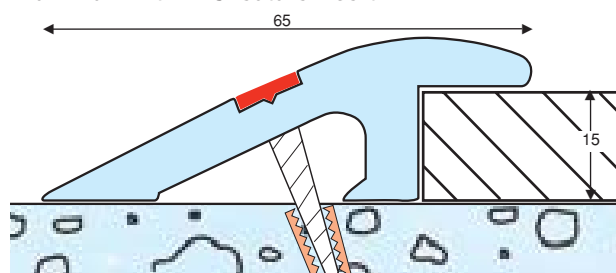
AR12

Aluminium



Titan AR65/2

Aluminium with PVC feature insert





RAMP TRIMS

(44)	Hh
------	----



Finishes available

Brass Trims

Antique brass ♦ Antique bronze

Stainless Steel Trims

Bright ♦ Brushed

Stock lengths:

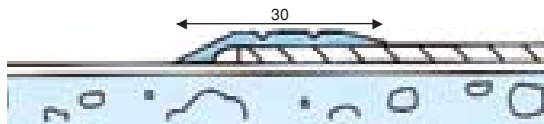
Brass: 2.0m x 6 = Packed 12m

Stainless Steel: 2.0m x 6 = Packed 12m

(BLE 2.715m x 6 = Packed 16.29m)

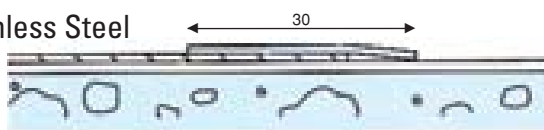
Lino Edges

BLE



SLE

Stainless Steel



Finishing trims - where one type of flooring is higher than another adjoining floor.

Ceramics • Laminate • Timber

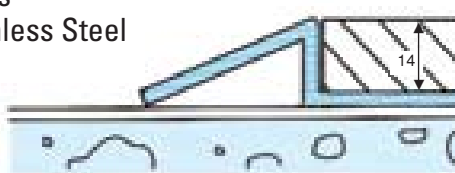
BR9 Brass

SR9 Stainless Steel

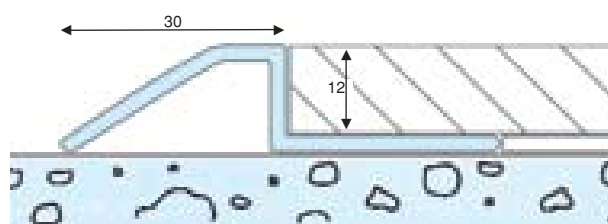


BR14 Brass

SR14 Stainless Steel

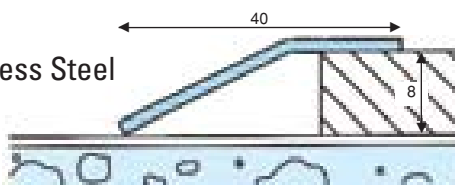


FTRS12 Stainless Steel



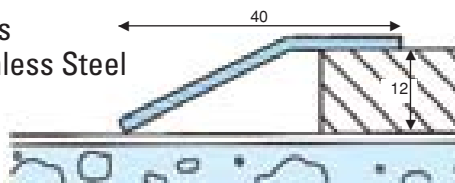
BR8 Brass

SR8 Stainless Steel



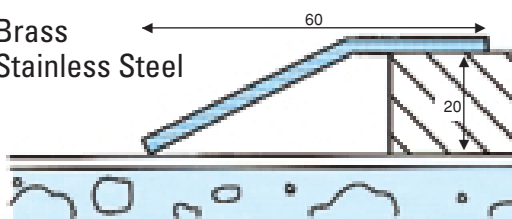
BR12 Brass

SR12 Stainless Steel



BR20 Brass

SR20 Stainless Steel





EDGINGS AND ANGLES



Angles

Polished top edges and drilled bases

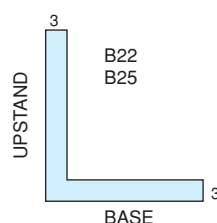
Brass and Aluminium



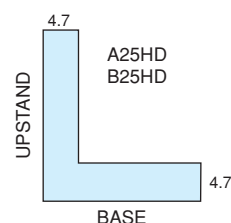
A4.5	B4.5
A6.5	B6.5
A9	B9
A13	B13
A16	B16
A19	B19
A22.5	
A25	

Stock lengths: 2.715m x 6 = Packed 16.29m

Equal Angles



HD = Heavy Duty



Stock lengths: 2.5m x 6 = 15m Aluminium
1.83m x 6 = 10.98m Brass

Application

Neat edging between various floorings.
Internal Matwell angle.

Symbols

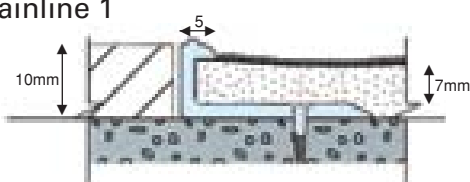
A – Aluminium
B – Brass
S – Stainless Steel

Numbers denote upstand height in millimetres.

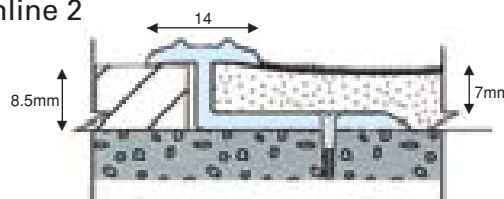
Mainline

Specialist Edging Profiles

Mainline 1



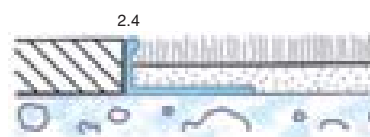
Mainline 2



Stock lengths: 2.715m x 6 = Packed 16.29m

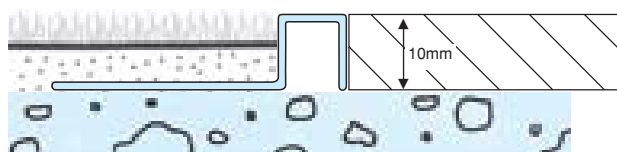
Stainless Steel

Folded Angles



S6.5
S9
S12
S16
S19
S22
S25

FTS10 - Feature Trim



Stock lengths: 2m x 6 = Packed 12m





EDGINGS AND ANGLES – FORMABLE



Application

Tag Trim profiles can be formed on site to allow freedom of design where a neat edging is preferred between various types of floorings.

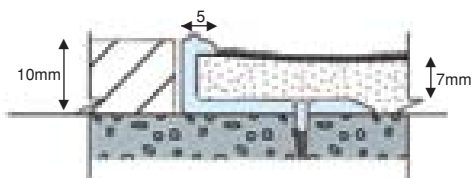
Symbols

- A – Aluminium
- B – Brass
- S – Stainless Steel
- TT – Tag Trim

Numbers denote upstand height in millimetres. Profiles supplied with polished top edges.

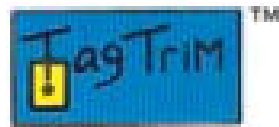
Mainline

TT Mainline 1



Aluminium formable profile

Stock lengths: 2.715m x 6 = Packed 16.29m



Formable Edges



Notched base for ease of curving

Brass

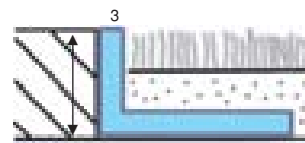
Stock lengths:

2.715m x 6 = Packed 16.29m



TTB4.5
TTB6.5
TTB9
TTB13
TTB16
TTB19

1.83m x 6 = Packed 10.98m



TTB22
TTB25

Aluminium

Stock lengths:

2.715m x 6 = Packed 16.29m

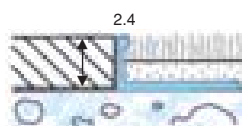


TTA4.5
TTA6.5
TTA9
TTA13
TTA16
TTA19
TTA22.5
TTA25

Stainless Steel

Stock lengths:

2.0m x 6 = Packed 12m



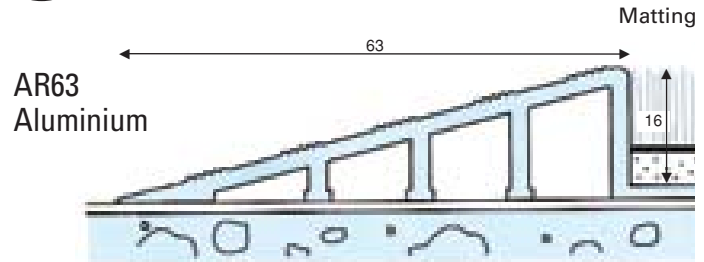
TTS6.5
TTS9
TTS12
TTS16
TTS19
TTS22
TTS25

*Tag Trim is an ever increasing brand,
for sizes not shown call our sales office
for advice.*



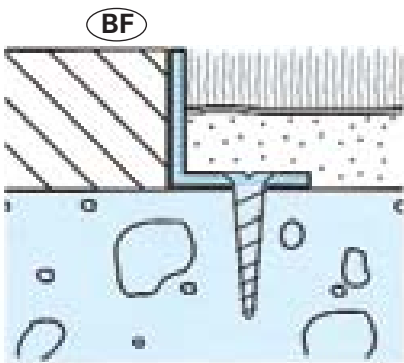
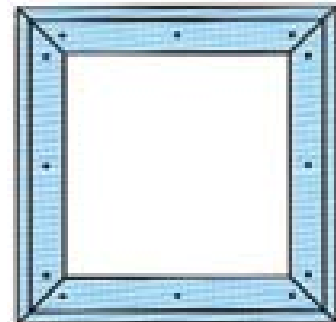


(SF) Surface fix frames example



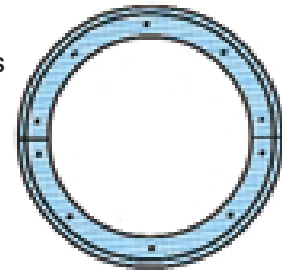
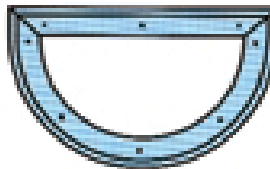
(BF) Base fix frames

- Polished top edge
- Mitred and drilled to customer's sizes
- Welded frames to special order



Special Services

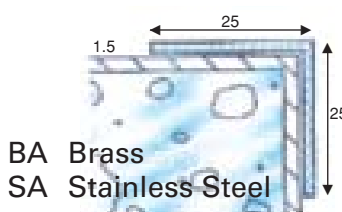
- Circular and curved frames



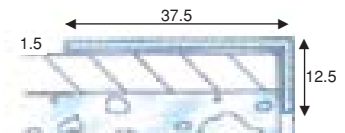
(TF) Top fix frames



Suitable angles for (TF)



BA Brass
SA Stainless Steel



BME Brass
SME Stainless Steel

Stock lengths:

Brass: 1.83m x 6 = Packed 10.98m
Stainless Steel: 2.0m x 6 = Packed 12m

PLEASE NOTE

When ordering Matwell frames please specify either (BF) (base fix) or (TF) (top fix) styles.

(BF) frames are available in all CAT standard edgings and angles, produced with the base inwards unless otherwise indicated.

For circular frames a suitable plan is required or hardboard template.

(TF) frames are available in suitable angles shown.

(SF) frames are used when matting is fitted above the level of the finished floor.

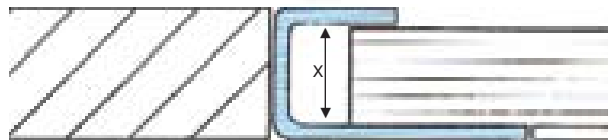
For advice on suitable sections with various types of matting please call our sales office.





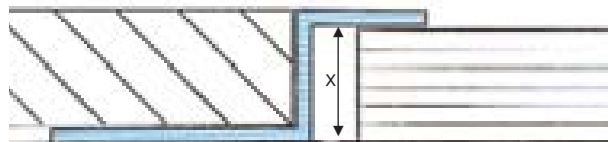
Finishing trims for timber and ceramic floors

Timberline 1



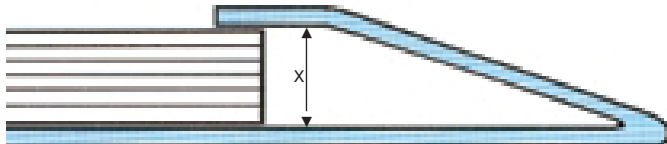
	X
Timberline 1/12	12mm
1/15	15mm
1/22	22mm

Timberline 2



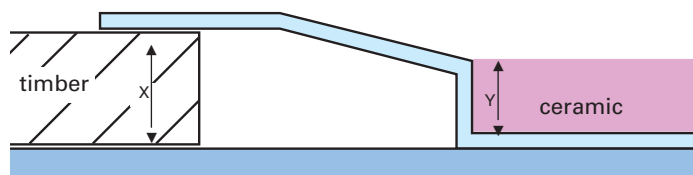
	X
Timberline 2/12	12mm
2/13B	13mm
2/15	15mm
2/22	22mm

Timberline 3



	X
Timberline 3/15	15mm
Timberline 3/12	12mm

Timberline 4



	X	Y
Timberline 4/2210	22mm	10mm
4/1510	15mm	10mm
4/128	12mm	8mm

Metal References

B – Brass

S – Stainless Steel

Stainless Steel is bright finish.
Brushed finish to special order.

Special finishes to order

Antique bronze

Antique brass

Stock lengths:

2.0m x 6 = Packed 12m

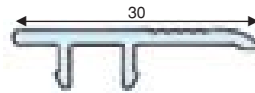




Square edge and twin profiles

Top-on-base system "TOB" profiles can be used with various types of floorings including carpet, laminate, timber and ceramics.

Square Edge



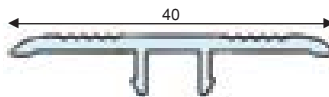
TOB1	Brass
TOB101	Aluminium Silver
TOB111	Mill Aluminium
TOB121	Polished Aluminium
TOB131	Satin Aluminium

Typical Applications

Ceramic - Carpet Tile
Perimeter edged trim



Twin



TOB2	Brass
TOB102	Aluminium Silver
TOB112	Mill Aluminium
TOB122	Polished Aluminium
TOB132	Satin Aluminium

Typical Applications

Timber - Timber
Timber - Ceramic

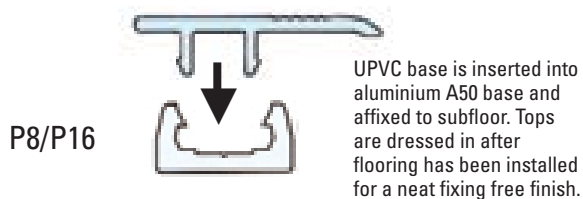


Stock lengths: - tops and bases

2.715m x 6 = Packed 16.29m

Aluminium Base

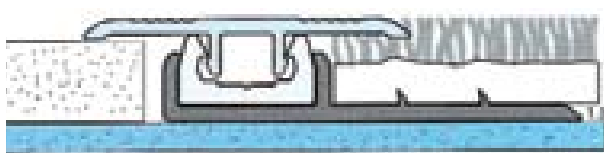
For use with Carpets. Suitable with all twin tops and P8 and P16 bases.



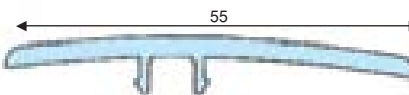
P8/P16

A50

A typical application of Timber to Carpet



Extra Wide Twin



Produced with a smooth top for a superb finish.

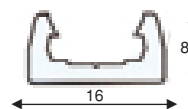
- offset top for expansion

TOB105	Aluminium Silver
TOB115	Mill Aluminium
TOB125	Polished Aluminium
TOB135	Satin Aluminium

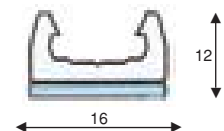
UPVC Bases

Predrilled for mechanical fixing to sub floor.

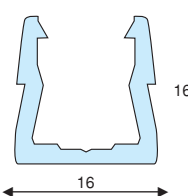
P8



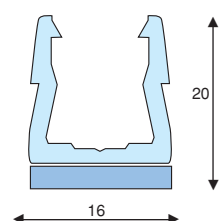
P12



P16



P20

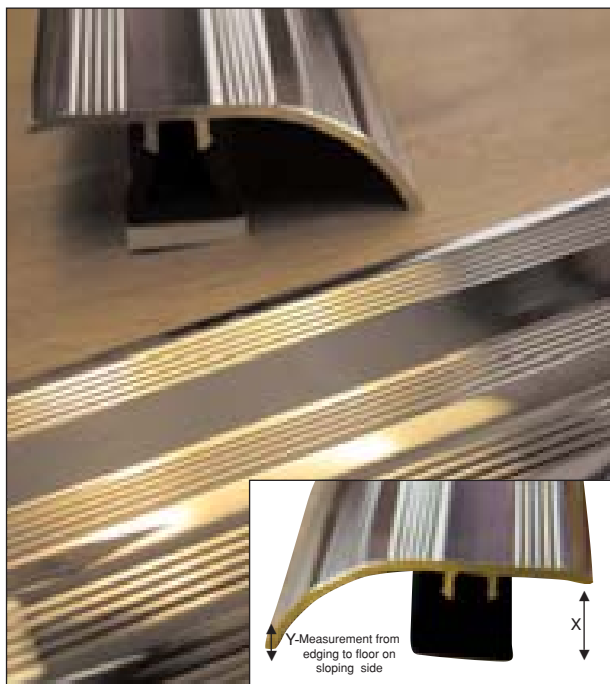


The use of a cartridge applied adhesive is recommended for bases.



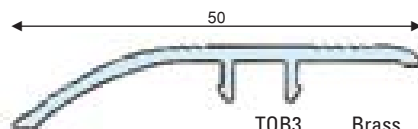


TOB CLIP-IN SYSTEMS



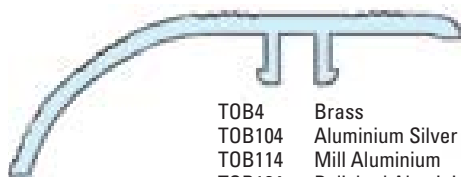
Ramp profiles

Ramp tops can be used with all TOB bases to accommodate situations where a flooring meets another flooring of a different height.



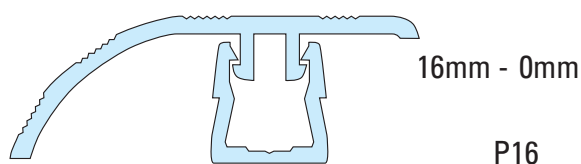
TOB3	Brass
TOB103	Aluminium Silver
TOB113	Mill Aluminium
TOB123	Polished Aluminium
TOB133	Satin Aluminium

Clip profile into bases illustrated to create ramp heights as shown from X-Y

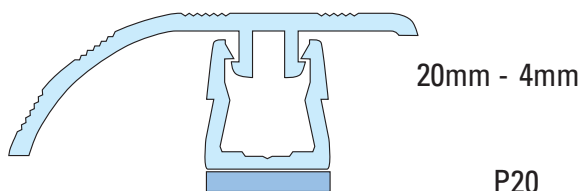


TOB4	Brass
TOB104	Aluminium Silver
TOB114	Mill Aluminium
TOB124	Polished Aluminium
TOB134	Satin Aluminium

Clip profile into bases illustrated to create ramp heights as shown from X-Y



P16

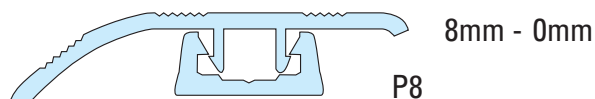


P20

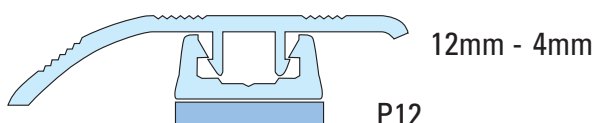
Stock lengths: - tops and bases
2.715m x 6 = Packed 16.29m

UPVC Bases

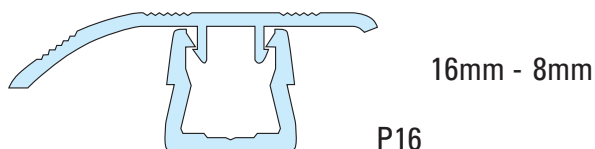
X Y



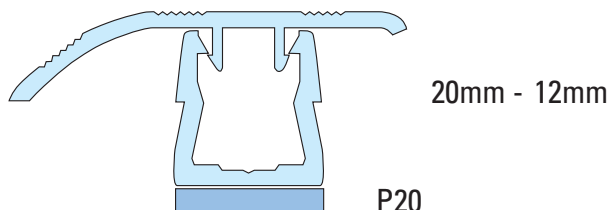
P8



P12



P16

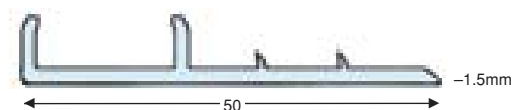


P20

Aluminium Base for Carpets

Suitable with P8 and P16 bases. Can also be used where a wider plate is required for fixing to sub floor.

A50



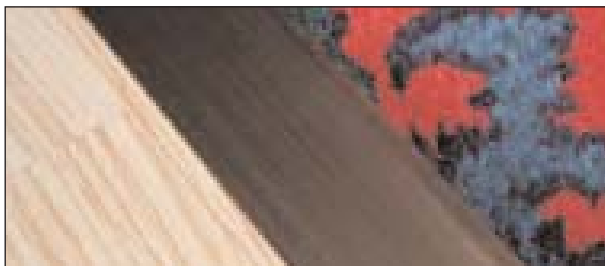


SPECIAL FINISHES FOR FLOOR TRIMS

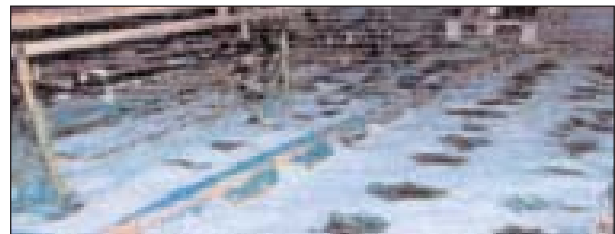
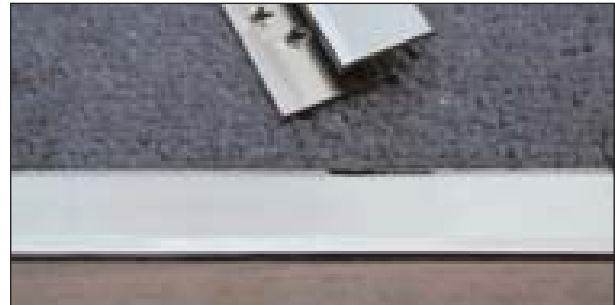
Special Finishes are available on a range of selected flooring profiles in the C.A.T. range. For information on suitability and availability please contact our sales office for samples and advice.



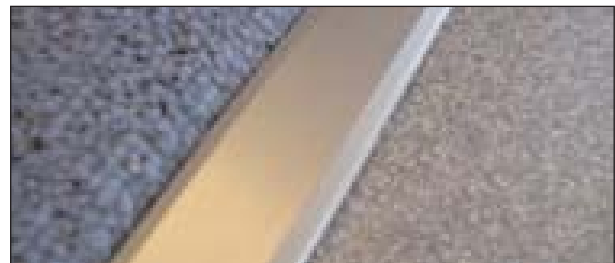
Antique bronze is a chemically applied finish to brass profiles to create an aged effect. This is a hand-finished process and will vary from batch to batch.



Bright chrome plating is applied to brass profiles to produce a superb modern finish. Often selected as an alternative finish to stainless steel.



Satin nickel. More subtle in appearance than bright chrome, nickel is C.A.T.s finish when a duller effect is preferred.



Lighter in shade than Antique bronze, Antique brass is chemically applied and then relieved to give a softer effect than polished brass. This is a hand-finished process and will vary from batch to batch.

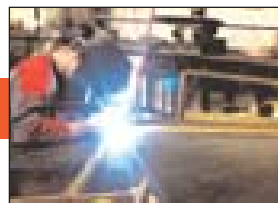


Please note: Finishes are not solid metals and consideration should be given when selection takes place to suitability of product.





FLOOR TRIMS FABRICATION



(44)	Hh
------	----



Profiles are formed using traditional fabrication processes and computer aided equipment. This mix of knowledge and technology means we can offer an unparalleled service for specialist trims to the flooring trade.

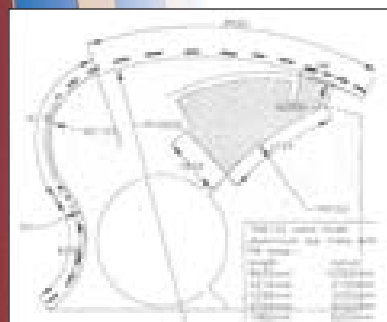
It is important to note 'the more level the sub floor and adjoining floorings the better the result will be'.

It is possible to form ramp trims, however profiles of a flatter design lend themselves better to fabrication.

Technical Information on Curved Profiles

A successful product installation is largely reliant upon the accuracy of information and 'if required' the quality of template supplied.

When placing an order for curved profiles it is important to provide information for all aspects of the work including floor coverings being laid and the condition of the sub floor to which profiles will be fitted. If there are two different floor coverings adjoining it should be pointed out whether they are level or there is a height difference.



How to Order

For profiles with a specified radius it is possible to produce curves from plans once linear meterage is confirmed by the customer, to a maximum radius of 10 metres, over this dimension templates are required.

For curves not of a specific radius hardboard templates should be accompanied by a sketch indicating how trims will be fitted.



Please allow 25% for material wastage in the curving press. Curves are supplied oversize for trimming onsite.

We are here to help

For technical advice on the availability and suitability of profiles for curving please call, fax or email your enquiry to our sales office.

To place an order please supply an official purchase order with templates and plans, a contact name and telephone number.

The delivery date required and other information relevant to the project.

Our Fabrication service includes the shaping of stair nosings, stair rods, floor trims and edgings, manufacture and welding of matwells including shaped frames, the folding and forming of bespoke profiles in aluminium, brass and stainless steel.



If we don't say yes we will say "we will try it"!

Innovators in Trim Design



CAT WALK FORMABLE TRIMS



Stock lengths: - tops and bases

2.715m x 6 = Packed 16.29m

Tops and bases are supplied separately.

Tops are available in colours:

Black	
Odyssey	
Chocolate Brown	
Val Blue	
Burgundy	

Installation

Form base to shape of curve required and affix to sub floor (ensuring that surface is level) with a suitable adhesive and screw fixings.

When fitting lengths over 2.715m always overlap top joints by a minimum of 150cm over base joints.

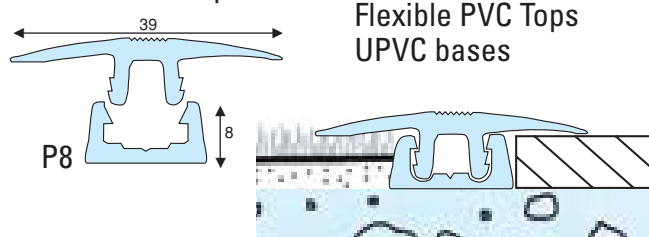
Once base is firmly secured floorings can be laid and tops dressed in with a rubber mallet.

Cat Walk is an installation friendly PVC system designed for fast, easy curving of transition profiles on site.

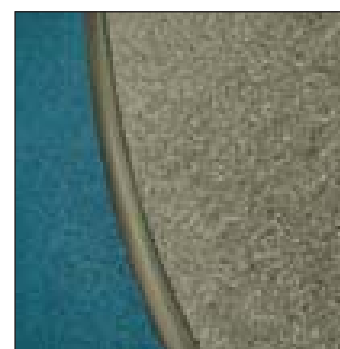
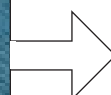
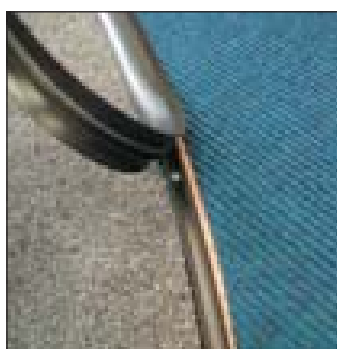
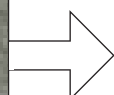
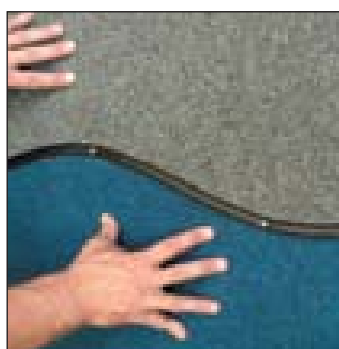
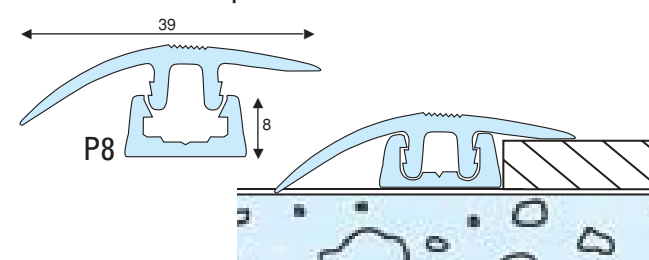
Curvable to a minimum radius of 750mm, tops are available in twin top T36 and ramp top RT39 styles.

Suitable for domestic and light to medium traffic installations, typical applications include carpet to laminate and ceramic floors.

Cat Walk T36 Top



Cat Walk RT39 Top



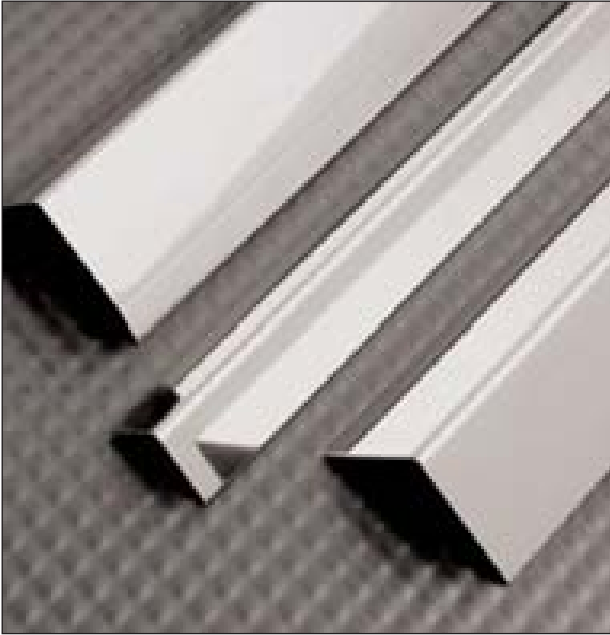
CATWALK FORMABLE TRIMS



CATWALK FORMABLE TRIMS



CORNER PROTECTORS



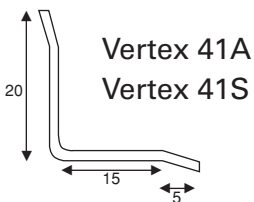
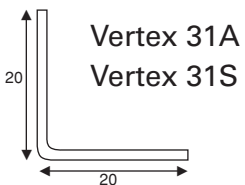
Stainless Steel

Formed in 1.2mm gauge

Aluminium

Formed in 1.5mm gauge

Internal



Stock lengths:

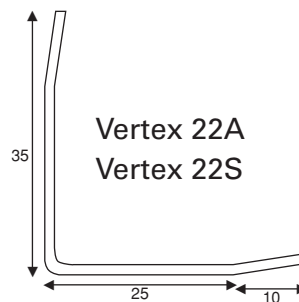
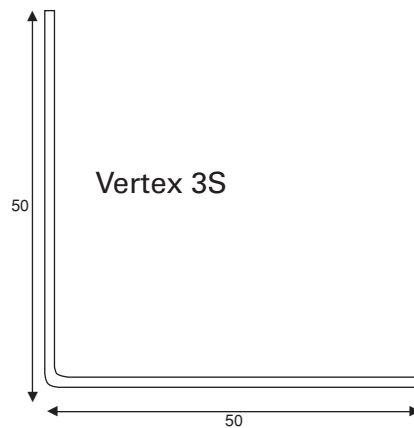
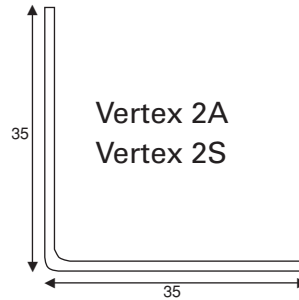
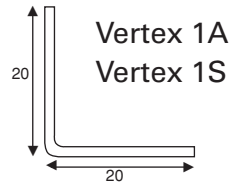
2.5m x 6 = Packed 15m

Symbols

A – Aluminium
S – Stainless Steel



External



Finishes

Stainless Steel ♦ Bright
♦ Brushed to order

Aluminium ♦ Mill Aluminium

♦ Powder coat to special order
dependent upon quantity



CAPPING PROFILES AND SKIRTING TRIMS



Application:

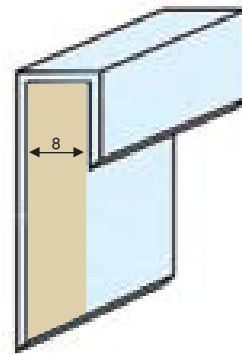
Capping details for floorings where traditional timber skirtings are not preferred.

Stock lengths:

Aluminium: 2.715m x 6 = Packed 16.29m

Brass: 2m x 6 = Packed 12m

Stainless Steel: 2m x 6 = Packed 12m

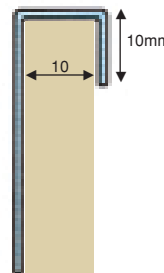


Aluminium

CAP IT

Finishes

- Mill aluminium
- Polished aluminium
- Synthetic brass
- Silver anodized
- Powder coat to special order - subject to quantities

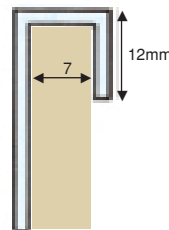


Brass

B CAP

for Prestige installations

- Bright finish



Stainless Steel

SSE

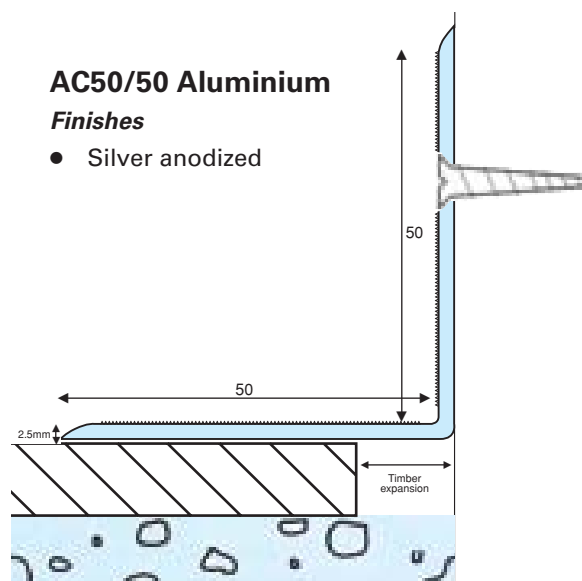
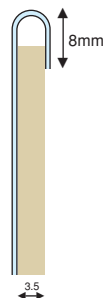
Finishes

- Bright finish
- Brushed finish

S CAP

For capping vinyl and linoleum floorings

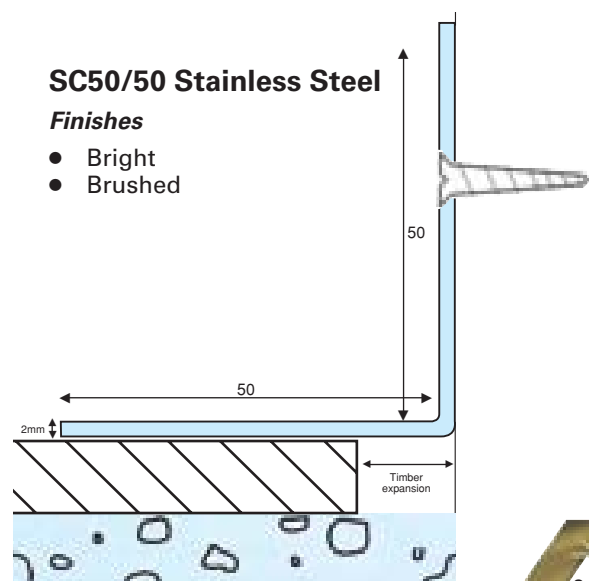
- Bright finish
- Stainless steel



AC50/50 Aluminium

Finishes

- Silver anodized



SC50/50 Stainless Steel

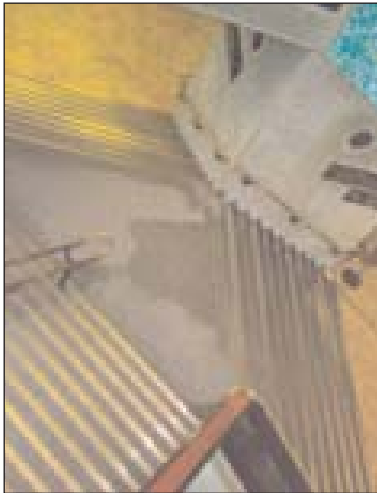
Finishes

- Bright
- Brushed





STAIR NOSING - TECHNICAL INFORMATION



Description

CAT nosings are manufactured to the highest quality specification in brass and aluminium.

A selection of nosings have serrated tread details and others with PVC inserts in a variety of colours.

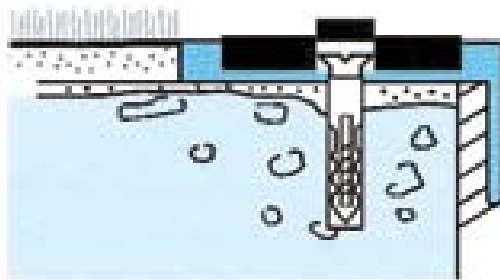
Selection

Choose from nosings in various thicknesses and shapes to accommodate different step edges and floor finishes.

Certain nosings are designed with a diminished edge for installation with hard floorings including vinyl, terrazzo, wood, etc.

Installation

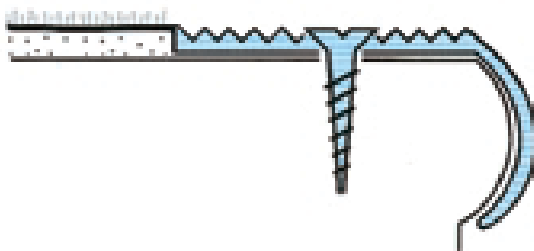
It is highly advisable when fitting stair nosings to use screw fixings and a suitable cartridge adhesive, after ensuring that treads and risers are in good order.



Nosings with PVC inserts are supplied with plugs to conceal screw heads. Alternatively the nosing carrier can be drilled and countersunk with infill supplied separately for trimming and infilling on site.



A drop of adhesive is required to secure plugs in place.



Nosings with ribbed brass treads are supplied with plugs to conceal screw heads. Alternatively nosings can be supplied drilled for brass screws without plugs if specified.

To raise the height of nosings to accommodate thicker floor coverings suitable packing strips of correct gauge can be used.

**NEVER FIT NOSINGS OVER EXISTING FLOOR COVERINGS
UNLESS SECTIONS ARE DESIGNED FOR THIS SITUATION.**





STAIR NOSING - TECHNICAL INFORMATION



Data

Brass alloy to BS 2874 : 1986.
Aluminium alloy to BS 1474 : 1987.
PVC to BS 6746 : 1990.

Special Finishes

Available to special order only with brass nosings.



Antique brass

Antique bronze

Chrome

Measuring

Steps should be measured and numbered from the top of the staircase to the bottom, indicating flights and landings for the cutting and installation plan.

For curved steps please refer to stair nosing fabrication section for advice on templating.

Supply

Stair nosings are supplied cut to size or oversize (by 30mm) if specified, for cutting on site.

Maintenance

Brass nosings are produced with a highly polished finish, regular cleaning with a suitable metal polish and soft cloth is advised to maintain their finish, alternatively nosings can be left to age oxidize for a natural finish.

Avoid water and all forms of moisture with brass nosings.

Aluminium ribbed tread sections which are polished aluminium can be maintained with a metal polish. Anodized and satin nosings should be cleaned with a mild detergent and warm water but must be totally dried after cleaning.

PVC inserts should be cleaned with a mild detergent diluted with water on a damp - not wet - cloth, ensuring that inserts are wiped dry before staircase is open to traffic.

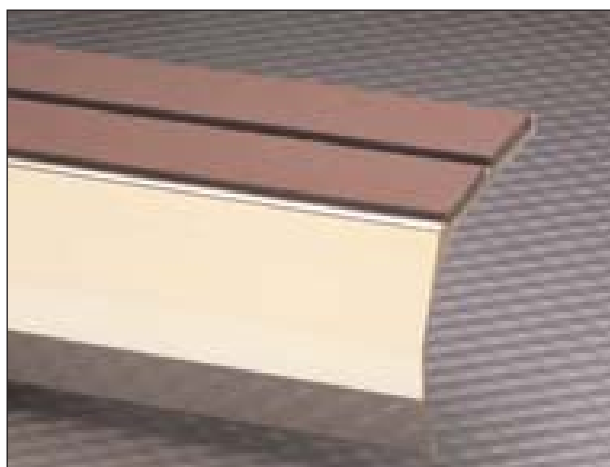
POLISHES AND INDUSTRIAL CLEANING AGENTS SHOULD NOT BE USED ON TREADS AND INSERTS AND MAY PROVE HAZARDOUS IF USED.

For further advice on the maintenance of a particular product please contact our sales office.



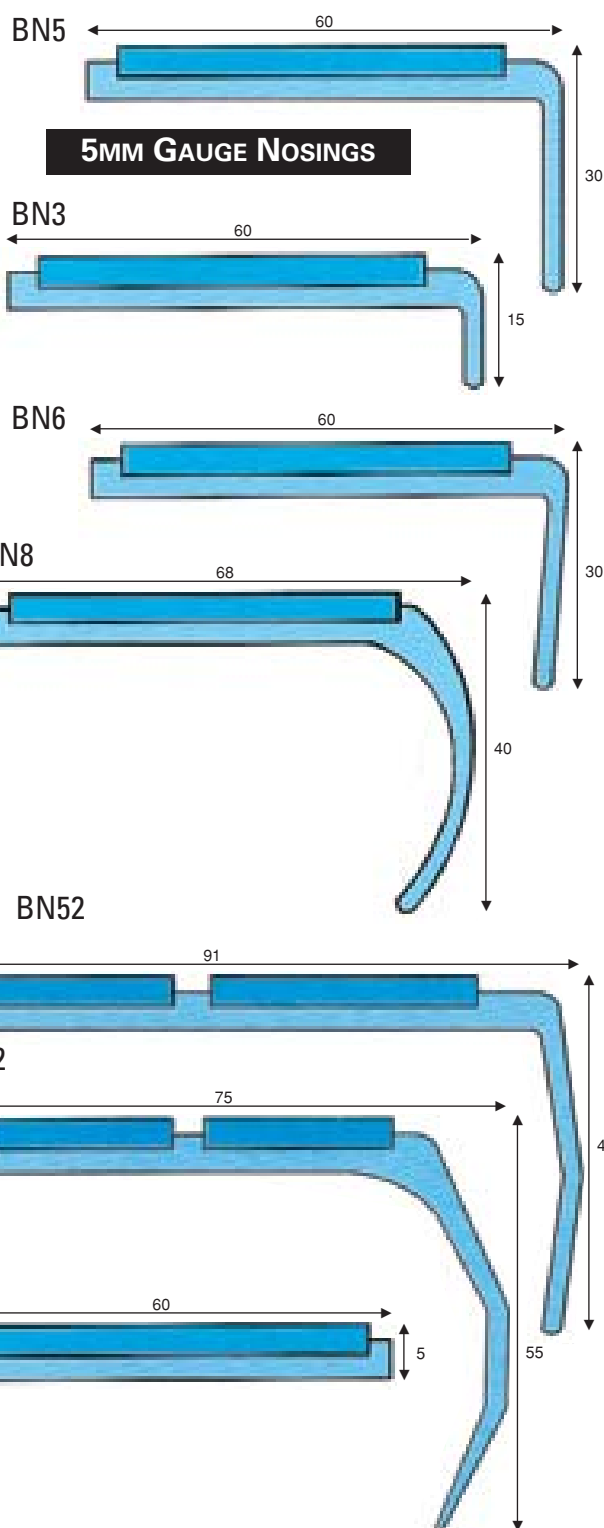


STAIR NOSING



Stair Nosings with PVC inserts

Available in polished brass.



Stair nosings with PVC inserts are supplied with concealing plugs for hidden fixings.

Can be undrilled if preferred.

Alternatively nosings can be drilled through carrier only and inserts fitted after fixing to stairs for a plug free finish.

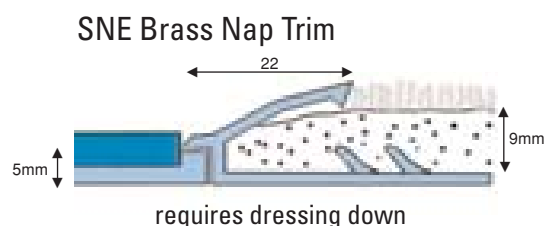
Please see technical information - installation.

Special finishes to order

Antique Bronze
Antique Brass
Chrome

Stair nosings can be supplied cut to size or in stock lengths at customer's request.

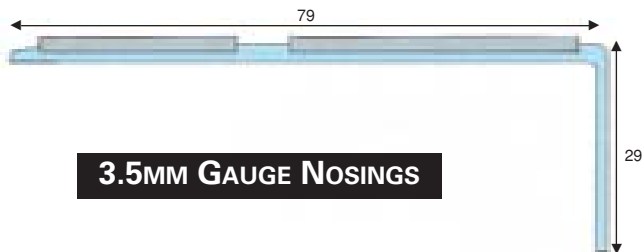
Stock lengths: 3.5m





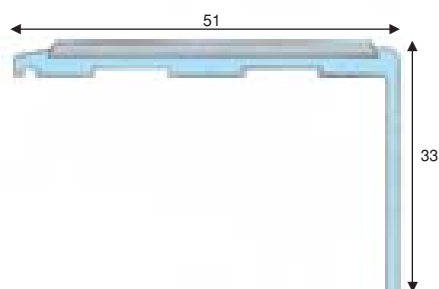
Polished Brass with PVC inserts

BN79

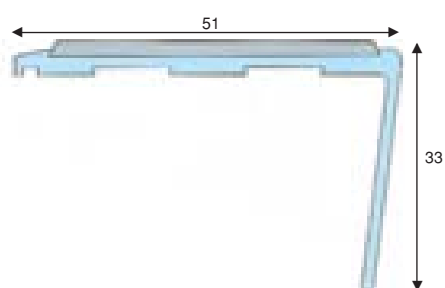


3.5MM GAUGE NOSINGS

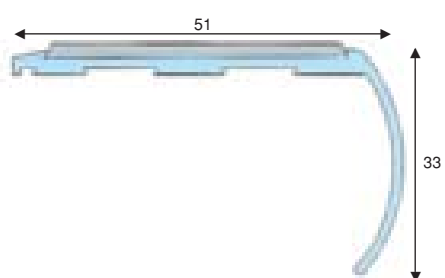
BN19



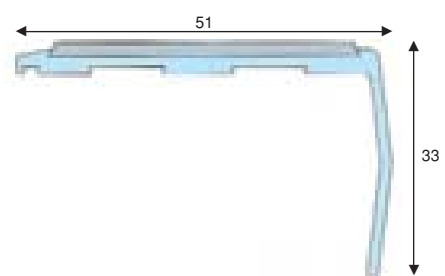
BN17



BN18



BN16



Stair nosings with PVC inserts are supplied with concealing plugs for hidden fixings.

Can be undrilled if preferred.

Alternatively nosings can be drilled through carrier only and inserts fitted after fixing to stairs for a plug free finish.

Please see technical information - installation.

Special finishes to order

Antique Bronze
Antique Brass
Chrome

Stair nosings can be supplied cut to size or in stock lengths at customer's request.

Stock lengths:
3.5m





STAIR NOSING



Stair nosings with PVC inserts are supplied with concealing plugs for hidden fixings.

Can be undrilled if preferred.

Alternatively nosings can be drilled through carrier only and inserts fitted after fixing to stairs for a plug free finish.

Please see technical information - installation.

Special finishes to order

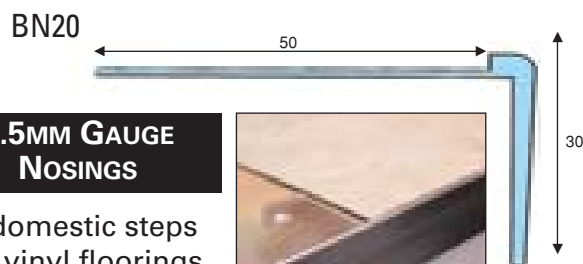
Antique Bronze
Antique Brass
Chrome

Stair nosings can be supplied cut to size or in stock lengths at customer's request.

Stock lengths: 3.5m

Polished Brass

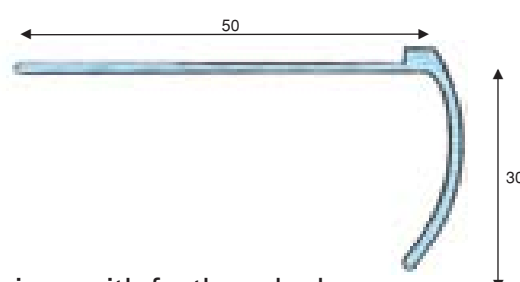
Nosings for resilient floorings



1.5MM GAUGE NOSINGS

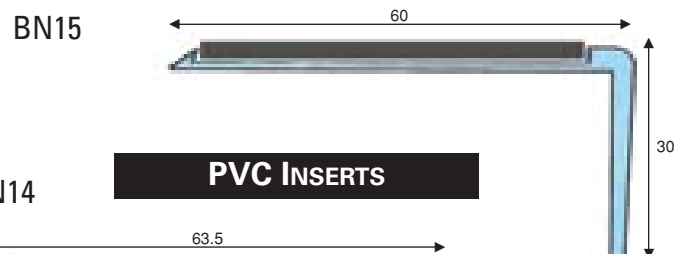
For domestic steps with vinyl floorings

BN21

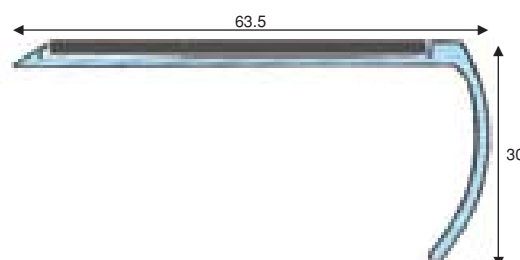


Nosings with feathered edges

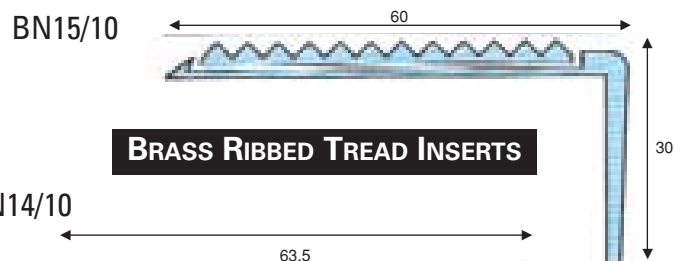
3.5MM GAUGE NOSINGS



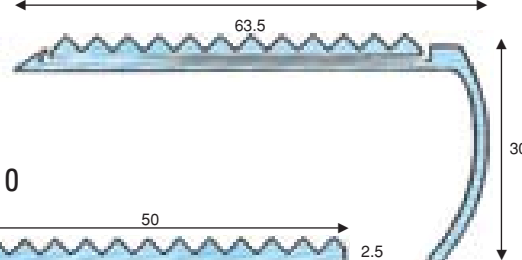
BN14



PVC INSERTS

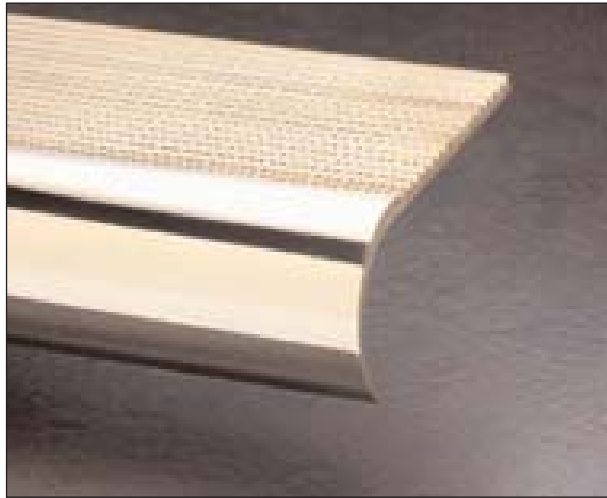


BN14/10

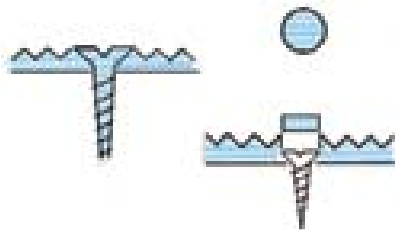


BN10





Stair nosings with ribbed treads can be supplied with either countersunk brass screws or zinc screws and concealing plugs secured with adhesive.



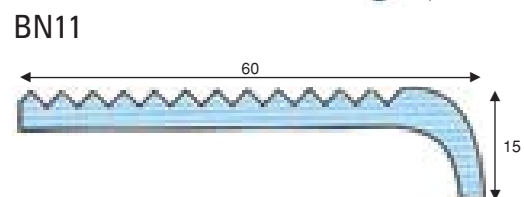
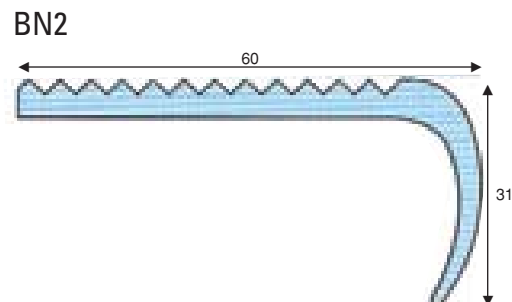
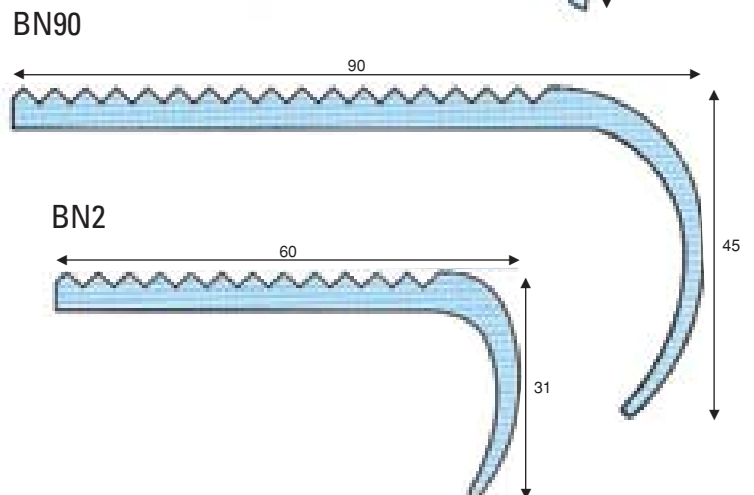
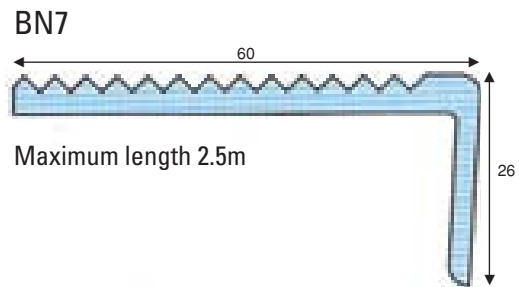
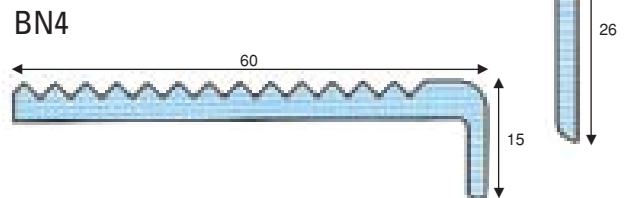
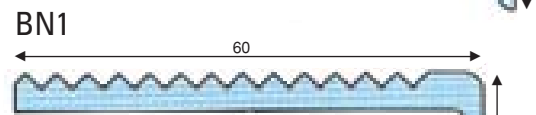
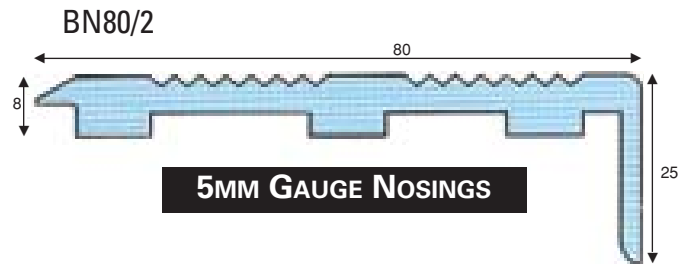
Special finishes to order

Antique Bronze
Antique Brass
Chrome

Stair nosings can be supplied cut to size or in stock lengths at customer's request.

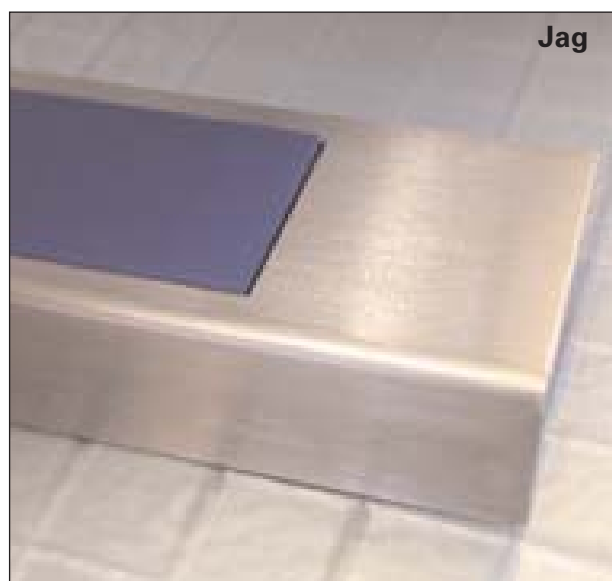
Stock lengths: 3.5m

Polished Brass with Ribbed Treads





STAIR NOSING



Patent Pending

To Special Order

Jag is an exciting new range of stainless steel stair nosings from C.A.T.

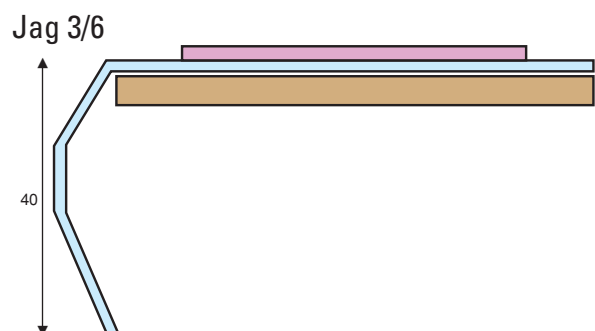
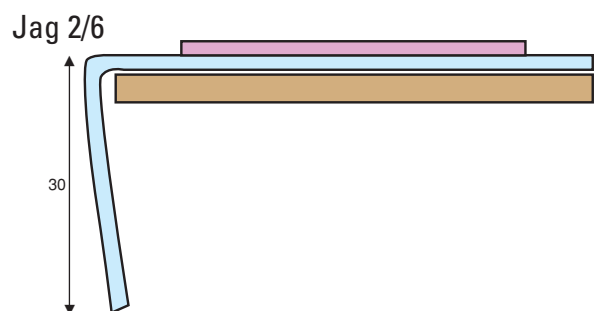
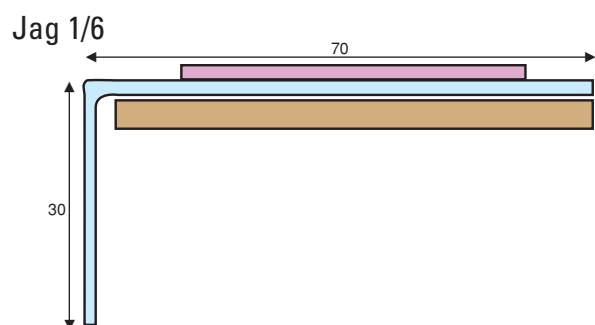
Developed for high tech interiors Jag represents a superior alternative to conventional aluminium sections.

Available in cut sizes to a maximum 2m length.

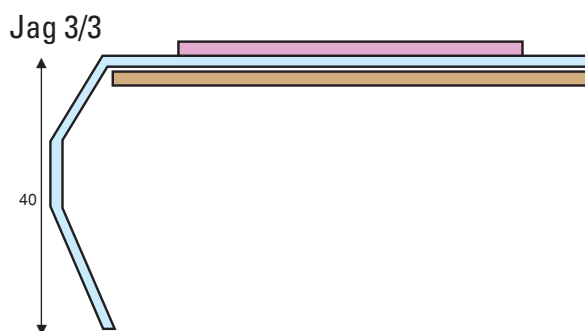
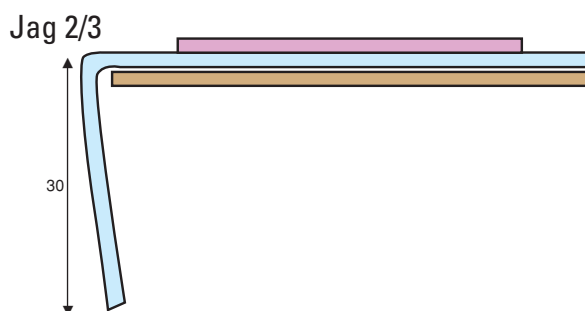
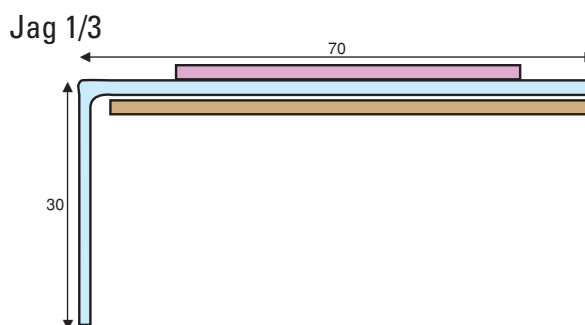
- bright or dp1 brushed stainless steel
- choice of coloured PVC infills

PVC infills are rebated to a constant width in size increments.

Heavy Duty – 6mm gauge



Slimline – 3mm gauge



For full technical advice on Jag please call our sales office.





Patent Pending

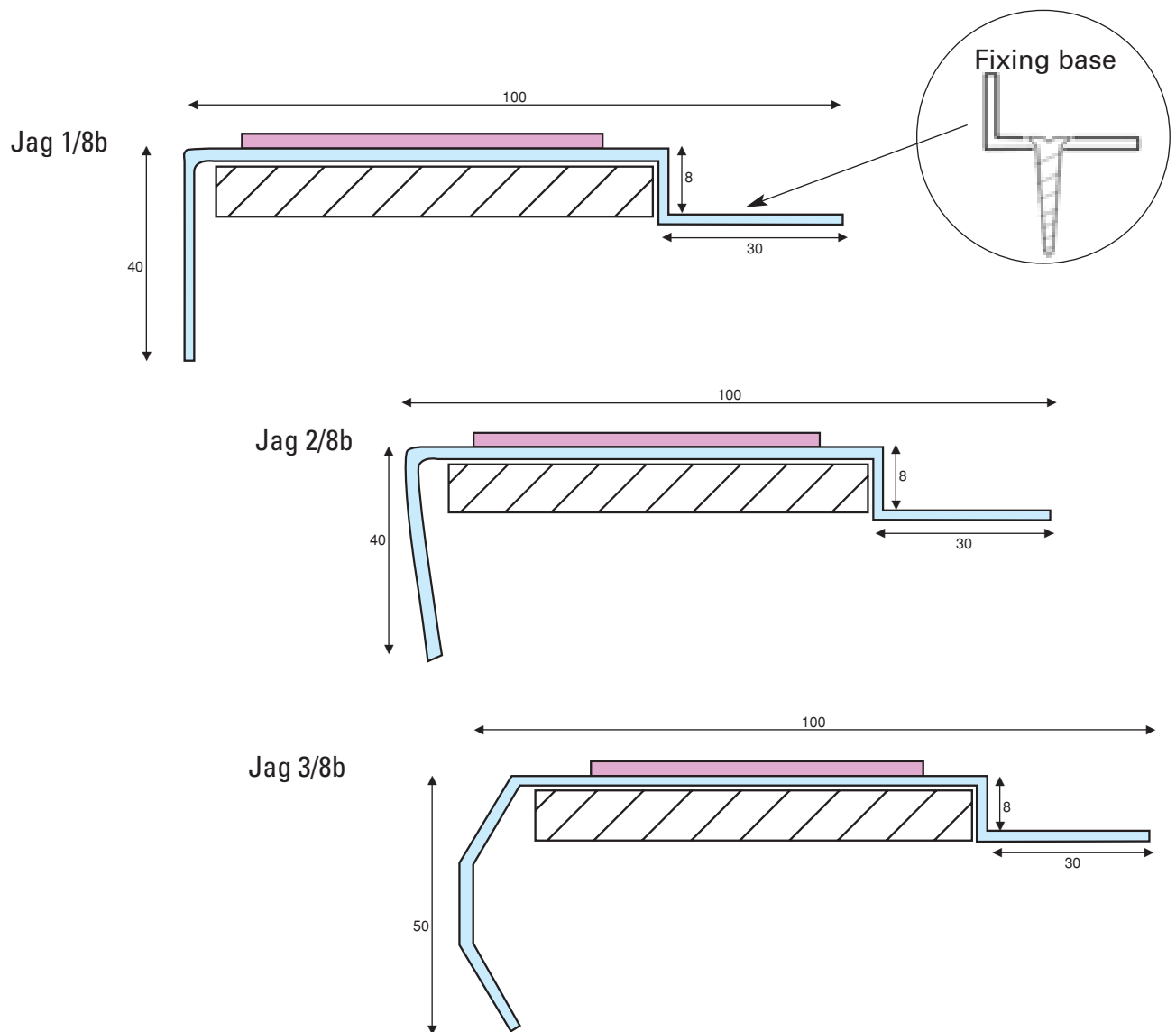
To Special Order

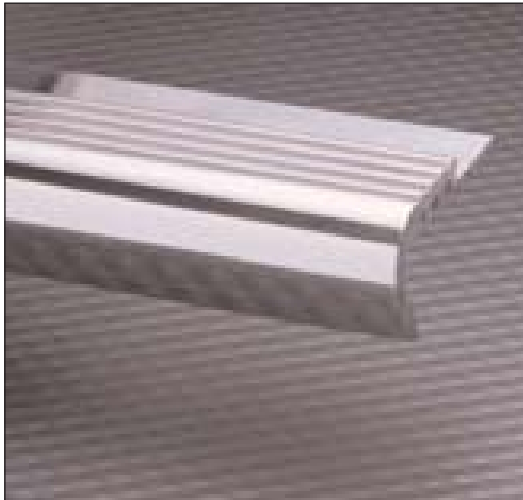
PVC infills are rebated to a constant width in size increments.

Base fixing holes.

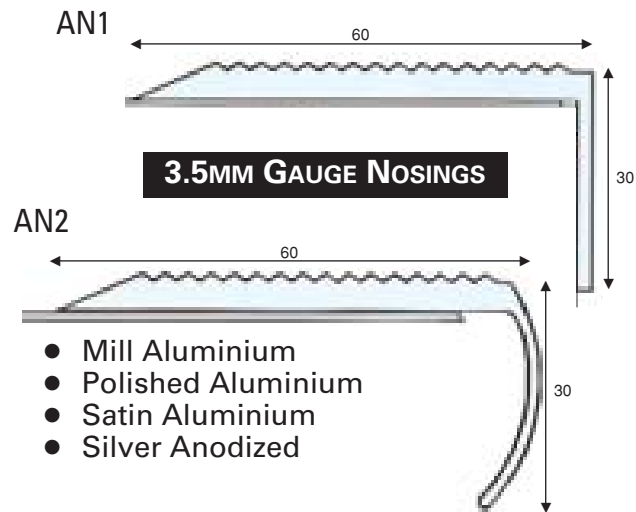
Available in cut sizes to a maximum 2m length.

- bright or dp1 brushed stainless steel
- choice of coloured PVC infills





Aluminium with Ribbed Treads

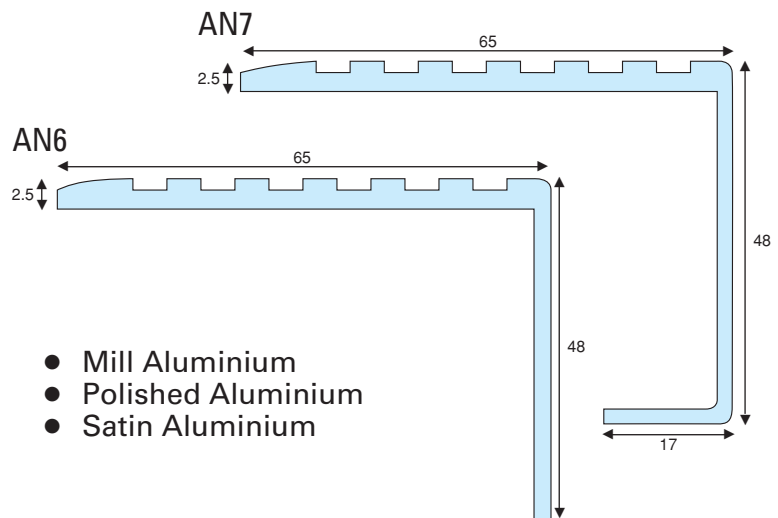


Stair nosings can be supplied cut to size or in stock lengths at customer's request.

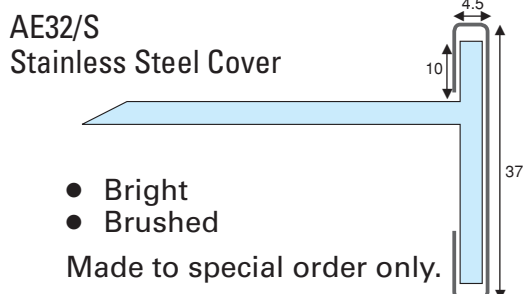
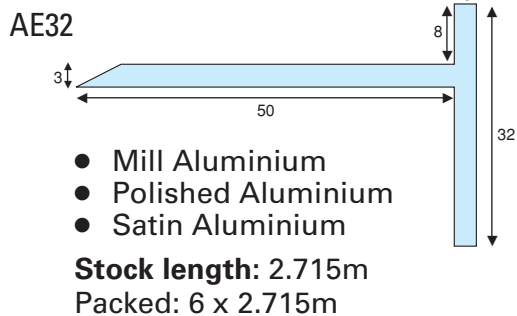
Stock lengths: 3.5m

Available drilled or undrilled.

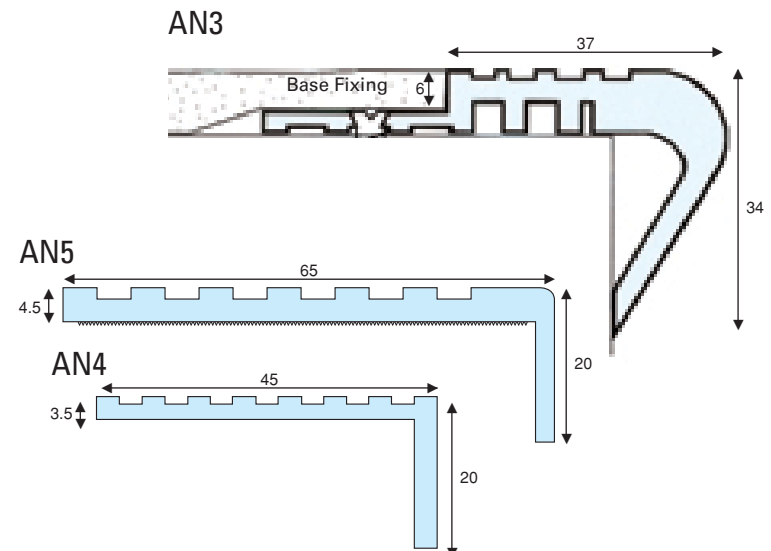
Aluminium with Castellated Treads



Edgings



Stock length: 2.0m
Packed: 6 x 2.0m



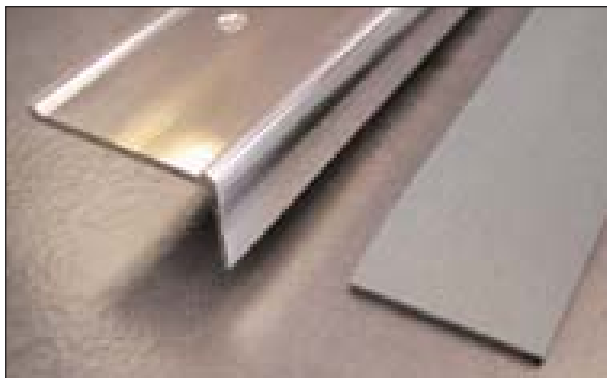


STAIR NOSING - INFILLS

Stair Nosings can be supplied drilled with a pvc infill and plugs to conceal screw heads.



Stair Nosings can be supplied with carrier section pre-drilled and pvc infill in lengths to trim and insert on site after carrier has been fixed to treads.



Stair Nosings with pvc inserts are available with a choice of sanded finish or with line ribbing detail, in a variety of colours to contrast all types of flooring.



Sanded Infill

	Black
	Slate
	Light Grey
	Blue
	Mid Blue
	Dark Green
	Mid Green
	Light Green
	Red Brown

	Terracotta
	Red
	Purple
	Lemon
	Dark Brown
	Light Brown
	Stone

Unsanded Infill

	White
--	-------

Ribbed Infill

	Black
	White
	Royal Blue
	Racing Green
	Pistachio Green
	Burgundy
	Poppy Red
	African Violet
	Odyssey
	Val Blue
	Chocolate Brown

Cleaning

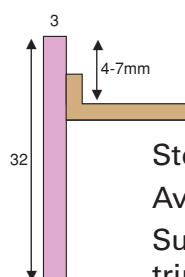
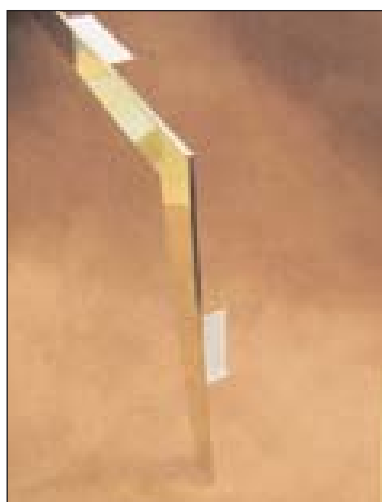
Infills should be cleaned with a mild detergent, diluted with water on a damp, not wet, cloth ensuring that infills are dry before staircase is open to foot traffic.

Avoid contact with stair nosing carrier.





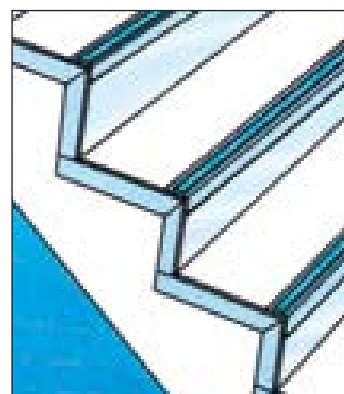
STAIR NOSING - TRIMMING EDGES



Stock angles 83° – 90°
Available 81° – 90°
Supplied oversize for
trimming on site.

Polished brass angles for use
with CAT stair nosings as a
masking detail for external
strings.

Installation



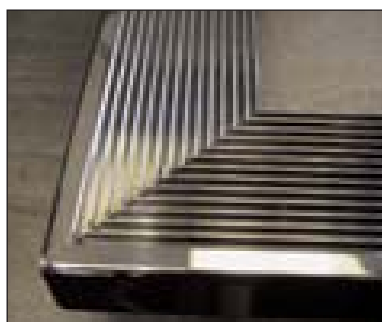
When trimmed apply
adhesive to inside face
of angle and hold till set.



Brass

Stair nosings can be supplied
with welded stringer trims to
mask string details where
floorings are installed on tread
only and riser is left bare or there
are no risers.

Please specify left or right handing when ordering.



Brass

Stair nosings can be supplied with 90° welded mitres.

When ordering please specify left or right handing,
and length of return.



Brass

Stair nosings can be produced with welded capped ends.

When ordering please specify left or right handing.





Description

A fabrication service is available for the curving and shaping of most brass nosings subject to step shape.

Also available are mitred and welded returns and capped ends for a neat finish to the end of nosings on open string staircases (see page 3.11).

When ordering curved nosings a hardboard or stiff card template is required to work from for each curved step.

Instructions

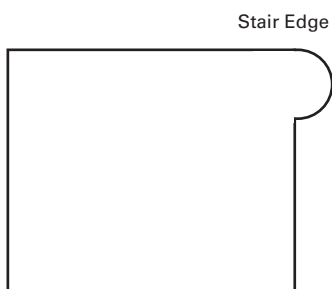
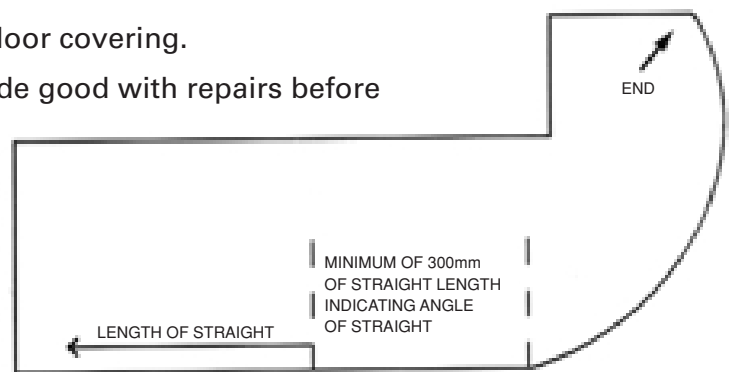
How to Take a Template

Step edge should be free from existing floor covering.

Where required step edge should be made good with repairs before template is taken.

Offer card on top of stair tread and with a marker pen draw around curve on underside of card at stair edge.

Ensuring that line is uniform cut along mark, then offer shaped card to step and make any adjustments as required.



Please indicate on all templates

- Nosing profile.
- Customer name and job reference.
- Order number.
- Top side of template.
- Edge of tread.
- Infill colour if PVC insert.
- Special drilling instructions.
- Allowance (if any) for new floor covering.
- When job is required.

All curved nosings are supplied oversize for trimming on site.

The maximum length of a curved nosing in one piece is 3.3 metres.

It is advisable to contact our sales office for the suitability of sections for curving.





Stair Rods and Fixing Eyes

The Akeman Collection consists of endless options to enhance the appearance of the most stylish staircases.

Choice

Rods and eyes in a variety of designs in solid brass, copper, steel and a range of special finishes.

Selection

Rods are produced in various diameters, selecting the most suitable rod is dependent upon:

- personal taste
- width of stair runner and stairway
- thickness of carpet and underfelt.

Guide for rods with conventional carpet and underfelt

- 10mm rod is suitable to 914mm
- 12mm rod is suitable to 1219mm
- 16mm rod is suitable to 2440mm
- 20mm rod is suitable to 2440mm and over

Please note this is for guidance only, consideration must be given to depth of carpet, effect required, etc. Call our sales office for advice.

Stair rods with carpet runners

Choose from the complete collection including stair clips.

Stair rods with fully fitted carpets

Choose round rods 10, 12, 16mm diameter with top fix eyes.

Measuring

See purchase order template in this catalogue.

Installation

Fix eyes into tread and riser directly alongside edge of carpet runner, leaving a gap of approximately $\frac{1}{8}$ " (3mm). Use rawl plugs for mechanical fixings into concrete stairs and direct screw fix into timber on wooden staircases, except when ring eyes are fitted and rawl plugs are advised to accept threaded taper fixing. Always use wooden gripper with stair rods.

When installing top fix eyes for fully fitted carpets exercise caution when fixing through carpet.





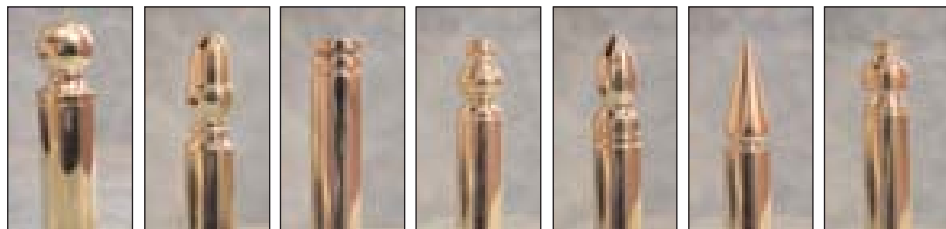
Brass Stair Rods and Eyes

Solid Round Rods

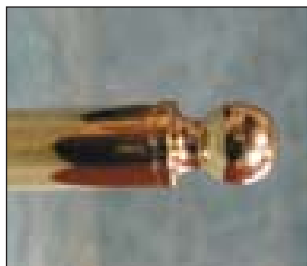


Turned Finials (available in 10, 12, 16 and 19mm diameters)

BALL ACORN CASTLE TURRET OVAL SPEAR BEACON

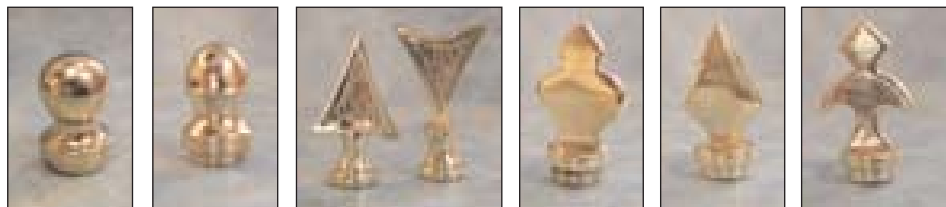


Hollow Round Rods



Push-in Finials

BALL 12 & 16mm ACORN 12 & 16mm ARROW + FLIGHT 16mm TREFOIL 16mm SPEAR 16mm FLEUR DE LYS 16mm



Hollow Reeded Rods



Push-in Finials (only available in 16mm diameter)

BALL ACORN ARROW + FLIGHT TREFOIL SPEAR FLEUR DE LYS



Solid Round Rods



Large Finials (available in 16 and 20mm diameters)

BALL ACORN PINEAPPLE



Solid Round Rods



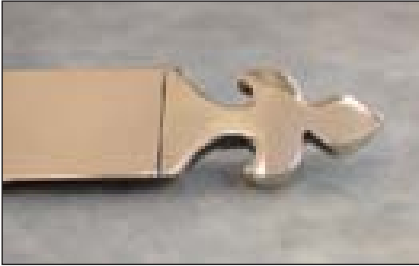
Arrow and Flight (available in 12 and 16mm diameters)



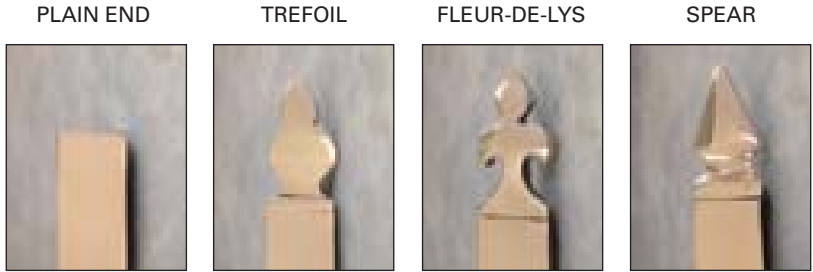


Brass Stair Rods and Eyes

Solid Triangular Rods



Welded Finials (only available in 22mm face)

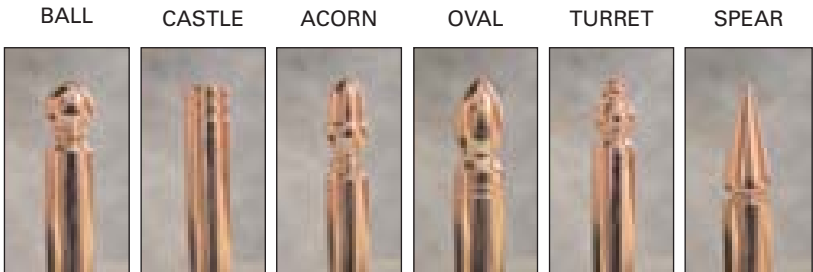


Copper Stair Rods and Eyes

Solid Round Rods

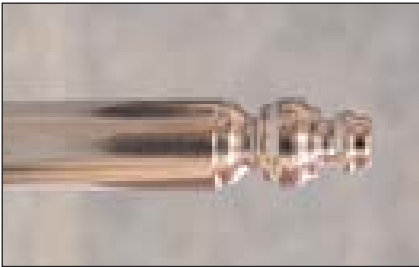


Turned Ends (only available in 12mm diameter)

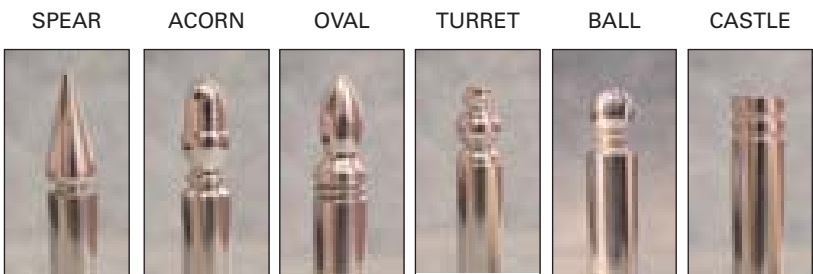


Steel Stair Rods and Eyes

Solid Round Rods



Turned Ends (available in 12 and 16mm diameters)



Stair Clips





Brass Fixing Eyes

Plain Eye



Suitable with round rods in diameters - 10, 12, 16, 19mm.
For stairs with open strings and rod removal is not required.

Hinged Eye



Suitable with round rods in diameters - 10, 12, 16, 19mm.
Recommended where regular removal of rods is required.

High Style Plain Eye



Specification as standard plain eye but with deeper tread and riser detail - 12, 16mm.
Recommended with particularly thick carpets and felt.

High Style Hinged Eye



Specification as standard hinged eye but with deeper tread and riser detail - 12, 16mm.
Recommended with particularly thick carpets and felt.

Plain Eye Triangular



Suitable with plain ended triangular rods for stairs with open strings and rod removal is not required.

Hinged Eye Triangular



Suitable with triangular rods for stairs where regular removal of rods is required.

Top Fix Eye



Suitable with round rods - 10, 12, 16mm diameter. Use with full width carpets and turned rods to create traditional effect. Caution when fixing eyes through carpet.

Ring Eye



Neat and unobtrusive with round rods - 10, 12, 16mm diameter.
Fix into treads or riser. Do not overtighten and damage thread. Always use rawl plugs when fixing.

Copper Fixing Eyes

Plain Eye



Hinged Eye



Produced in solid copper to the same specification as brass eyes.
Suitable with round copper rods 12mm diameter. Plain and hinged eyes.
Not available in high style.

Steel Fixing Eyes

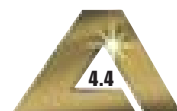
Plain Eye



Hinged Eye



Produced in steel to the same specification as brass eyes.
Suitable with round steel rods 12 and 16mm diameter. Plain and hinged eyes.
Not available in high style.





Special Finishes for Stair Rods and Eyes

New Look! Old Effect! Always Stylish!
When choosing C.A.T. consider our special finishes.

Finishes on Brass Rods and Eyes

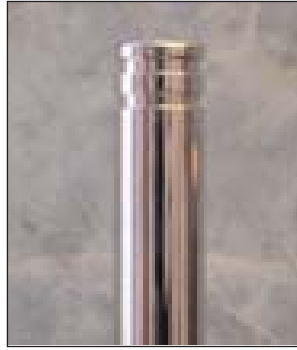
BRIGHT CHROME



SATIN CHROME



BRIGHT NICKEL



SATIN NICKEL



ANTIQUE BRASS



ANTIQUE BRONZE



GUNMETAL



Please note: Antique finishes are hand applied and will vary in shade from order to order, though efforts will be made to match to samples if supplied.

Finishes on Steel Rods and Eyes - availability is subject to quantity required.

BLACK POWDER is a finish applied by spray electrostatically and produces a superior finish to traditional metal paints.



CHEMI BLACK is a chemical process in which metals are immersed to produce the desired black finish.



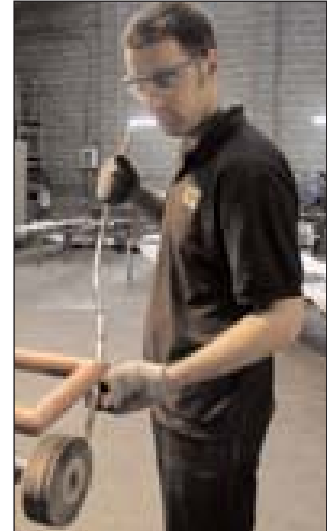


Fabrication

For the situations when you can't always tread the straight and narrow!



Curved rods are produced from customer's templates.



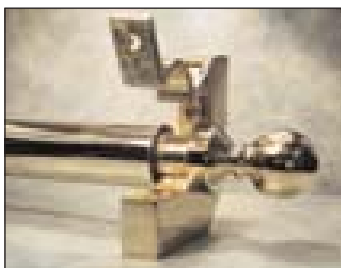
Special Products



At last!

Stainless steel stair rods and eyes produced in 12mm diameter solid turned rod with plain or hinged fixing eyes.

For full information please call our sales office.



This rod's going nowhere!

Oversize rods with rebate, used with hinged eye, the ultimate solution to rods that move.

Available to special order, round rods only.

Please note: dimensions are critical with this type of rod. Ideal for large projects requiring long rods.



Stop That Spinning!

New improvement to hinged eyes for 2002. A rubber pad to help prevent rods turning by creating a compressed fit into eyes.



Joining Detail!

When rods over 3000mm in length are required we advise the use of a centre joining detail.

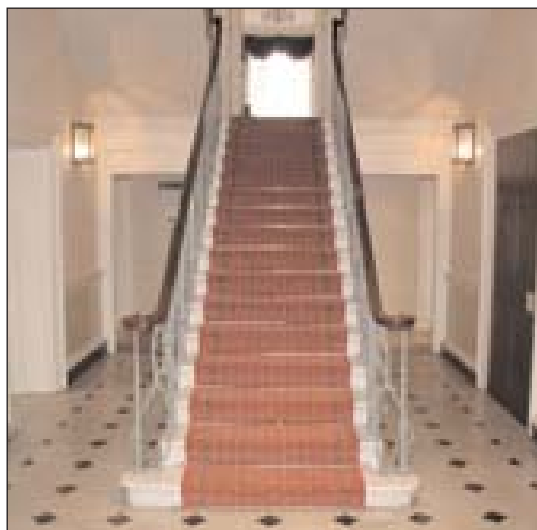
Available for 20mm rods.

Can also be used with 25mm rods which have been rebated to accept 20mm fixing eyes.





THE AKEMAN COLLECTION - PRE-PACK RANGE



Suitable for stairs with carpet runners

Pre-Pack Range

Suitable for carpet runners to 900mm (36").

Choice of finishes available.

Superb value and quality.

Each pack contains:

- 13 x 1 metre stair rods with push-in finials.
- 26 x hinged fixing eyes with screws.

Note: Not available singly.



Choose
either ball
or acorn
finials.



Brass



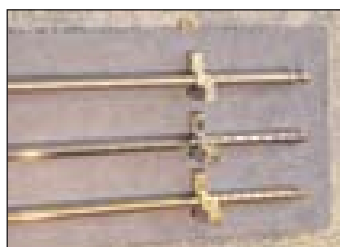
Chrome



Satin Chrome



Display Board



Display boards are available
with stock orders.

Stair rods are produced in 12mm diameter hollow tube 1 metre in length and are suitable for stairs with carpet runners to 900mm (36") in width.

How to Measure for Stair Rods

Measure the full width of carpet runner and add a minimum of 100mm including finials to give finished rod length, subject to maximum available width of staircase. Cut rod to size with a hacksaw, being careful to cut evenly and clean burred edges with emery cloth allowing finial to be inserted.

To increase tightness of finial in tube turn nut on thread to expand rubber bung.

Stair eyes should be fixed directly alongside edge of runner. Use rawl plugs for mechanical fixings into concrete stair and direct screw fix into timber (having drilled pilot hole first) on wooden stair.



Please note: stair rods and eyes are designed for decorative appeal and should always be used in conjunction with wooden gripper for fixing carpet to stairs.



PURCHASE ORDER TEMPLATES

Purchase Order Form for Stair Nosings

1.5% Discount on all Orders Placed on this Template Form.

Orders placed subject to C.A.T. normal Terms and Conditions of Sale

COMPANY		INVOICE ADDRESS:
CONTACT		
TEL		
FAX		
EMAIL		DELIVERY ADDRESS:
ORDER NO.		
ACCOUNT NO.		
DATE OF ORDER		
DELIVERY DATE		

MEASURING

Steps should be measured and numbered from the top of the staircase to the bottom, indicating flights and landings for the cutting and installation plan. For curved steps please refer to stair nosing fabrication section for advice on templating.

Stair nosings can be supplied in various lengths.

- stock lengths
- cut to size
- oversize (by 30mm) if specified for cutting on site

ORDER

Nosing reference		Insert colour	
Drilled		Undrilled	
Curves / Yes		No	

SIZES

--

SPECIAL INSTRUCTIONS

--





PURCHASE ORDER TEMPLATES

The Akeman Collection Purchase Order Form for Stair Rods, Eyes and Stair Clips

1.5% Discount on all Orders Placed on this Template Form.

Orders placed subject to C.A.T. normal Terms and Conditions of Sale

COMPANY
CONTACT
TEL
FAX
EMAIL
ORDER NO.
ACCOUNT NO.
DATE OF ORDER
DELIVERY DATE

	INVOICE ADDRESS:
	DELIVERY ADDRESS:

STAIR RODS

FIXING EYES – sold in pairs

ROD TYPE		EYE TYPE	
DIAMETER			
FINIAL TYPE		QUANTITY	
FINISH			

SIZES: TIP TO TIP MEASUREMENT

STAIR CLIPS

	FINISH	
	NUMBER OF CLIPS IN PAIRS	

SPECIAL INSTRUCTIONS

--

TIPS FOR MEASURING STAIR RODS

For rods with carpet runners, measure the full width of the runner and add a minimum of 100mm for 10mm, 12mm and 16mm turned rods and 150mm for rods with large finials having given consideration to available staircase width.

For rods with full width carpets using top fix eyes, measure stairs full width and deduct a suitable amount to create best effect. Always number stairs from top down to bottom.





PURCHASE ORDER TEMPLATES

Purchase Order Form - General

1.5% Discount on all Orders Placed on this Template Form.

Orders placed subject to C.A.T. normal Terms and Conditions of Sale

INVOICE ADDRESS:	DELIVERY ADDRESS:
TEL	TEL
FAX	FAX
EMAIL	EMAIL

COMPANY	CONTACT
TEL	
FAX	
EMAIL	ORDER NO.
ACCOUNT NO.	
DATE OF ORDER	
DELIVERY DATE	

PRODUCTS

--

SPECIAL INSTRUCTIONS

--



Terms and Conditions of Sale

General

- 1.1 All quotations are made and all orders are accepted subject to the following conditions. All other terms, conditions or warranties whatsoever are excluded from the contract or any variation thereof unless expressly accepted by the Company in writing.
- 1.2 Acceptance of delivery of Goods shall constitute acceptance of these conditions where acceptance has not previously been communicated by the Customer to the Company.
- 1.3 Orders are accepted (save where the contrary is expressed in writing in the acceptance) subject to availability of stocks of the Goods ordered at the time specified for delivery.
- 1.4 If any statement or representation has been made to the Customer by the Company, its servants or agents, upon which the Customer relies other than the documents enclosed with the Company's quotation or acknowledgement of order then the Customer must set out that statement or representation in a document to be attached to or endorsed on the order and in any such case the Company may confirm, reject or clarify the point and submit a new quotation.
- 1.5.1 We shall not be liable for any loss or damage whatsoever arising from failure by us to perform the contract, whether wholly or in part, which is caused by:
 - (1) default by our supplies or;
 - (2) any cause whatsoever beyond our control.
- 1.5.2 Our inclusive liability for failure to perform the contract whether wholly or in part and for negligence (other than liability for negligence resulting in personal injury or death) shall be limited to:
 - (1) In cases in which goods are returned complete and in the condition which they were despatched, the supply of replacement goods.
 - (2) In all other cases the payment of a sum not exceeding the proportion of the net invoice price which is attributable to the goods which are subject of the claim.
- 1.5.3 In no circumstances whatsoever shall we be liable to indirect or consequential loss or for loss of profits.

Delivery

- 2.1 Time for delivery is given as accurately as possible but is not guaranteed. The Customer shall have no right to damages or to cancel the order for failure for any cause to meet any delivery time stated.
- 2.2 The date of the delivery shall in every case be dependent upon prompt receipt of all necessary information, final instructions or approvals from the Customer. Alterations by the Customer in design specifications or quantities required may result in delay in delivery.
- 2.3 Failure by the Customer to take delivery of or to make payment in respect of any one or more instalments of goods delivered hereunder shall entitle the Company to treat the whole contract as repudiated by the Customer.
- 2.4 The Company will endeavour to comply with reasonable requests by the Customer for postponement of delivery but shall be under no obligation to do so. Where delivery is postponed otherwise than due to default by the Company the Customer shall pay all costs and expenses including a reasonable charge for storage and transportation occasioned thereby and payment for the Goods shall be made in accordance with these conditions.
- 2.5 Any packaging supplied by the Company unless otherwise expressly agreed is intended to provide adequate protection throughout normal conditions of transit of usual duration.
- 2.6 The Customer is responsible in all cases for unloading the delivery and shall be responsible for all loss or of damage to the Goods during the course of such unloading.
- 2.7 A delivery note or notes for the Company must be signed on receipt of the Goods.

Risk and Title

- 3.1 Risk shall pass to the Customer so that the Customer is responsible for all loss, damage or deterioration to the Goods.
 - 3.1.1 if the Company delivers the Goods by its own transport or in accordance with a specific contractual obligation arranges transport for the Goods at the time when the Goods or a relevant part thereof arrive at the place of delivery, or
 - 3.1.2 in all other circumstances at the time when the Goods or a consignment or other part thereof leave the premises of the Company.
- 3.2 Title to the Goods or any relevant part thereof shall only pass to the Customer upon the happening of any one of the following events:-
 - 3.2.1 the Customer has paid the Company all sums due and payable by it to the Company under the contract and all other prior contracts between the Company and the Customer, or
 - 3.2.2 when the Company serves on the Customer notice in writing specifying that title in the Goods or such part thereof has passed.
- 3.3 The Company may recover Goods in respect of which title has not been passed to the Customer at any time and the Customer hereby licenses the Company its officers, employees and agents to enter upon any premises of the Customer for the purpose either of satisfying itself that condition 3.4 below is being complied with by the Customer or of recovery of any Goods in respect of which property has not passed to the Customer.
- 3.4 Until title to the Goods has passed to the Customer pursuant to the terms hereof it shall possess the Goods as a bailee of the Company on the terms of the contract. If the Company so requires the Customer shall store the Goods separately from other Goods and shall ensure that they are clearly identifiable as belonging to the Company.

Cancellation

- 4.1 Cancellation will only be agreed to by the Company on condition that all costs and expenses incurred by the Company up to the time of cancellation and all loss of profits and other loss or damage resulting to the Company by reason of such cancellation will be paid forthwith by the Customer to the Company.

Prices

- 5.1 All prices are unless otherwise stated quoted net ex works exclusive of VAT and are subject to fluctuation in the event of any increase in the cost of labour due to local or national awards or increases in the cost of materials and overheads. Any increase in such costs during the period of the contract will be added to the quoted price.
- 5.2 In the event of any alteration being requested by the Customer and agreed by the Company in design or specification the Company shall be entitled to make an adjustment of the contract price corresponding to such alteration.
- 5.3 Prices quoted are for the total quantities shown and the Company may not offer the rates or prices quoted for smaller quantities.
- 5.4 All deliveries are free other than orders or part orders below the minimum carriage paid order value currently applicable, as specified in a current special quotation, or in the absence thereof, the Company's prevailing price list.
- 5.5 All orders are subject to minimum order charge, as specified in a current special quotation or, in absence thereof, the Company's prevailing price list.

Terms of Payment

- 6.1 Unless otherwise agreed by the Company in writing the terms of payment shall be net cash monthly account due and payable on the last day of the month following the month in which the Goods were

despatched or would have been despatched save for postponement otherwise than due to default on the part of the Company. The Company shall be entitled to submit its invoice with its delivery advice note or at any time thereafter save that where delivery has been postponed at the request of or by the default of the Customer then the Company may submit its invoice at any time after the Goods are ready for delivery or would have been ready in the ordinary course but for the request or default as aforesaid.

- 6.2 Where Goods are delivered by instalments the Company may invoice each instalment separately and the Customer shall pay such invoice in accordance with these conditions.
- 6.3 No disputes arising under the contract nor delays beyond the reasonable control of the Company shall interfere with prompt payment in full by the Customer.
- 6.4 In the event of default in payment by the Customer the Company shall be entitled without prejudice to any other right or remedy to suspend all further deliveries on any contract or contracts between the Company and the Customer without notice and to charge interest on any amount outstanding at a rate of 4% per annum above the Base rate of National Westminster Plc in force at the time when payment was due.

Dimensions

- 7.1 The Company reserves the right to alter or change dimensions of the Goods supplied within reasonable limits having regard to the nature of the Goods. Dimensions specified by the Company are to be treated as approximate only unless the Customer specifically states in writing that exact measurements are required.

Loss and Damages

- 8.1 In the event of any loss or damage or delay to any Goods delivered at our risk to a buyer or to his agent or otherwise to his order notice of the same shall be given in writing by the buyer forthwith upon delivery (or, in the case of the loss of any Goods, at the time when the Goods should have been delivered) and the buyer shall at the same time take all necessary steps to notify the carrier in writing within 24 hours of any such loss, damage or delay and where practicable shall enter a note of the same upon the carriers receipt. If by reason of the failure of the buyer to give any notice as provided above we are precluded from making a recovery from the carrier in respect of the loss or damage or delay complained of then we shall not be liable for any claim by the buyer in respect thereof and the buyer shall be liable to pay for the Goods as though no such loss or damage has occurred.
- 8.2 Orders are accepted subject to the incorporation in the contract of these Conditions of Sale and any special conditions of sale, which shall override and exclude any terms and conditions proposed by a buyer, except insofar as acceptance of the same has been communicated by us to a buyer in writing.
- 8.3 Terms and conditions proposed by a buyer cannot be accepted by our staff without express written sanction, it is a buyers responsibility to ensure that such sanction has been given.

Confidential Information

- 9.1 All drawings, drawings, confidential records, computer software and other information supplied by the Company are supplied on the express understanding that copyright is reserved to the Company and that the Customer will not without the written consent of the Company either give away, loan, exhibit or sell any such drawings, documents, records, software or other information or extracts herefrom or copies thereof or use them in any way except in connection with the Goods in respect of which they are issued.

Customer's Drawings

- 10.1 The Customer shall be solely responsible for ensuring that all drawing information, advice and recommendations given to the Company either directly or indirectly by the Customer or by the Customer's agents, servants, consultants or advisers are accurate, correct and suitable. Examination or consideration by the Company of such drawings, information, advice or recommendations shall in no way limit the Customer's responsibility thereunder unless the Company specifically agrees in writing to accept responsibility.
- 10.2 The Customer indemnify the Company from and against all actions, claims, costs and proceedings which arise due to the manufacturer of Goods to the drawings or specifications of the Customer where such drawings or specifications are at fault or where it is alleged that they involve an infringement of a Patent copyright Registered Design or Design Copyright or other exclusive right.

Data and Technical Information

- 11.1 The information contained in the advertising, sale and technical literature issued by the Company may be relied upon to be accurate in the exact circumstances in which it is expressed otherwise any illustrations, performance details, examples of installations and methods of assembly and all other technical data in such literature are based on experience and upon trials under test conditions and are provided for general guidance only.

Insolvency

- 12.1 The risk in all Goods supplied by us shall pass immediately they are delivered into the physical custody of a buyer or his agents, or otherwise to his order. We shall retain sole and absolute property in such goods as beneficial owner until such time all moneys due to us from the buyer have been paid in full, until that time a buyer shall be in possession of the goods as bailee only and shall be deemed to have so acknowledge.
- 12.2 A buyers right to possession of any goods supplied by us, shall cease if, being an individual, he commits an available act of bankruptcy, or, being a company, a receiver becomes entitled to take possession of any of its assets or any person becomes entitled to present a petition for its winding up or it is resolved that it be wound up. Or under any other circumstances by which moneys due to us are not forthcoming. We shall be entitled in these events to enter at any time with or without vehicles upon any premises at which we reasonably believe such goods to be stored and to repossess them.
- 12.3 A buyer shall be at liberty in the ordinary course of business to process and make products from and, as our agent, to sell our goods, whether paid for, or not. The proceeds of any such sale shall be for our account and shall be held in trust for us to the extent of the full price of the goods.

Force Majeure

- 13.1 Neither party shall be under any liability for any delay, loss or damage caused wholly or in part by act of God, governmental restriction, condition or control or by reason of any act done or not done pursuant to a trade dispute whether such dispute involves its employees or not or by reason of any other act, matter or thing beyond its reasonable control including failure by the other party to carry out the provisions of these conditions.

Legal

- 14.1 The contract shall be governed and interpreted exclusively according to the Law of England and shall be subject to the jurisdiction of the English Courts only.

C.A.T reserve the right to make product design changes to profiles and accessories in this literature, for reasons including improvement of performance and other factors dictated by market forces.



© September 2003