



July 2013

Moduleo® Click   
Installation Instructions

 **moduleo**®  
Design Floors



# Moduleo® Click Installation Instructions

Welcome to your brand new Moduleo® Click design floor. Click is designed to offer all the stunning detail and outstanding natural beauty of Moduleo® floors, but with quick and easy installation.

After a very short installation period, your Moduleo® Click floor will bring you years of pleasure. However, it's important to read these instructions carefully and follow them during fitting, as the guarantee will not apply if the floor is not fitted in accordance with these instructions.

## General conditions

The installation of Moduleo® is straight forward and follows the same guidelines that apply to all quality resilient tile floors.

We recommend that you always use materials from a single batch for each installation as we cannot guarantee a match between batches.

Good preparation is essential for a trouble-free installation. Moduleo® can be laid on to concrete, timber, stone and many other subfloors, which have been suitably prepared. The use of an underlay will make the installation of Moduleo® Click easier and provide additional comfort and sound insulation.

Only Xtralloor underlay is recommended for installation with Moduleo® Click flooring, designed to be a perfect partner for Click. The underlay smooths out irregularities within the sub floor, such as gROUT joints or ceramic tiles, as well as improving the sound absorption of the floor covering.

Site conditions must comply with the relevant national regulations. Moduleo® is not suitable for external installation or unheated locations such as conservatories. It can be used with under-floor heating, providing it is switched off for 48 hours before and after laying the maximum permitted surface temperature is 27°C (80°F).

Tiles and sub-floor must be allowed to stabilise to a consistent temperature between 18°C and 25°C (64°F and 80°F) for a period of 24 hours before installing.

## Recommended tools

- Broom and/or vacuum cleaner
- Tape measure
- Pencil
- Set square and ruler
- Utility knife
- Hand roller
- Rubber mallet
- Tapping block

## Preparation

**1 The floor should be fitted at a room temperature of minimum 18°C/62°F and maximum 27°C/80°F.**

**2 The materials should be acclimatised for a period of 24 hours prior to installation.**

**3 Before installation, check all panels in daylight for possible defects or discrepancies in batch, colour or shine.**

**4 Check that the tongue and groove of the click profile is free from dirt and undamaged.**

**5 For best results mix at least two packs when fitting to avoid repetitions in the pattern. It is also preferable to only use material from the same batch in a single room.**

**6 The surface beneath the floor must be sufficiently prepared in advance to guarantee successful fitting of the floor covering. In particular, it must be clean, dry, smooth, firm, level, free from defects and not contaminated with grease, oil or chemicals. Unevenness of the subfloor in excess of 3mm over a 3m length must be levelled with an appropriate levelling compound. If you are uncertain of the requirements, please contact your retailer who can confirm the exact requirements. The finished appearance of a Moduleo® Click floor will only be as good as the quality of the sub floor over which it is installed. Any irregularities in the sub floor may show through the finished floor.**

## Step-by-step fitting instructions

Moduleo® Click is a "floating" floor. Never glue or fix the panels to the surface below.

The flooring can be installed wall-to-wall; however, it is advisable to incorporate a 5mm expansion gap at the perimeter of the room. Where the floor may be exposed to unusually wide temperature ranges (such as where under floor heating is used or areas adjacent to a south facing window), then it is necessary to use a 5mm space around the edge, as appropriate. Please note that Moduleo® Click is not suitable for installation in unheated areas such as conservatories.

For surfaces larger than 200m<sup>2</sup>, we advise that an expansion joint of 10mm is created around the perimeter of the room. In addition, should a single wall or run be longer than 15 linear metres, then a 5mm expansion joint should be allowed within the body of the floor. If you are uncertain of the requirements, please contact your retailer who can confirm the exact requirements.

We advise that an expansion joint is left between doorways. Xtralloor Click T Bar is a perfect solution for this area. The Moduleo® Click system panels can be joined in two

different ways: either tongue-in-groove

or groove-in-tongue. The simplest procedure, however, is groove-in-tongue. The advantage of the Moduleo® Click system is that it allows you to choose your own starting position. Moreover, you may work either from left to right or from right to left, whichever is best for you.

Depending on the direction in which you work, you are advised to begin from either a corner or a door. It is advisable to begin with the groove side of the plank towards the wall and work from left to right.

**1 Measure the room carefully to determine the central axis, from which the first row to be laid is outlined.**

**2 Check whether the first row of panels needs to be narrowed. If not, the lower groove lip of the first row of panels need to be removed. Use a utility knife to neatly cut out the lower groove lip.**

**3 First install the Xtralloor underlay in accordance with the instructions, ensuring the shiny side is upper most.**

**4 Begin by peeling back the protective cover on the Xtralloor underlay and lay the first row in the corner of the room on your left hand side as you are looking at the wall. Always work from left to right and with the tongue towards yourself. Figure 1**

**5 Lay the first row in a straight line and click the head ends together. Put the short side of the profile into head end of the previous panel and press the panel downwards. It is recommended to use a hand roller for connecting the head ends so that the joint fits securely. Continue laying the first row in the same way until you get to the last piece. Figure 2**

**6 For the last piece, measure the last plank to ensure a tight fit to the wall. Then cut away the marked piece and fit the end panel in the same way as the previous panels. When cutting the panel with a utility knife, make sure that you cut through the wear layer before breaking the panel. Figure 3**

**7 For an attractive and natural appearance, we advise you to use the piece left over from row 1 as the first piece in the next row, as long as the remaining piece is at least 1/3 of the total plank length. Do this for all subsequent rows.**

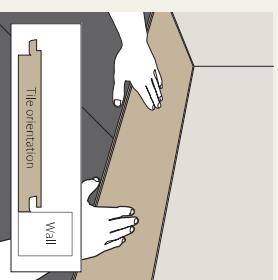


Figure 1

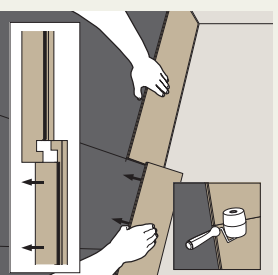


Figure 2

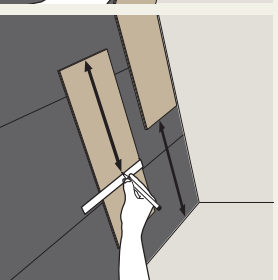


Figure 3

# Moduleo® Click Maintenance hints and safety information

## Step-by-step fitting instructions continued

**8** Fit the second row as you did for the first: start on the left side and slide the groove of the panel under an angle of about 25° over the tongue of the previous row and click the groove into the tongue by laying down the panel while pushing it firmly against the first row. Figure 4

**9** Then fit the second panel by sliding the groove under at an angle of 25° into the tongue of the previous row. Position the corner of the head end against the previous panel and then drop the short side of the profile into the head end of the previous panel and push downwards. Use a hand roller for connecting the head ends so that the joint fits securely. Repeat until you reach the end of the row.

**10** To ensure a firm Click installation, it's recommended that the planks are tapped together along the long edge with a tapping block and a rubber mallet. This will ensure that the Click mechanism is firmly locked during installation, providing a secure joint and avoiding any movement after the installation has been completed.

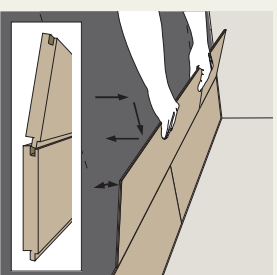


Figure 4

**11** To fit the last row of panels you will usually need to narrow them. Do this as follows: lay a panel on top of the previous row with the tongue towards the wall, lay another panel upside down up to the edge of the wall and mark the panel underneath. Cut the panel to size and fit the last row. Figure 6

**12** Door posts and heating pipes also need to be individually fitted. First cut the panel to the right length.

Then place the panel next to the object and draw the correct fitting. Next, cut the panel to size. Doorposts can also be sawn to size if necessary to lay the floor beneath them. For cutting around difficult areas such as door posts, heating pipes and other interior furniture, the use of a jigsaw with the correct plastic cutting blades is suitable and will avoid unsightly cuts at the perimeter of the room.

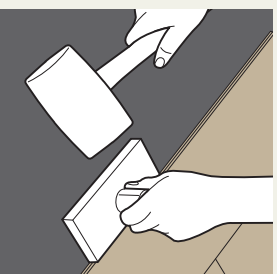


Figure 5



Figure 6

## Care and maintenance

Congratulations! You have just installed a Moduleo® Click design floor. Your new floor has been produced in accordance with the highest standards and will give you years of pleasure in your home.

Although Moduleo® design floors are one of the easiest floors to take care of, it is best to follow the recommendations provided here for optimal protection of the factory finish and to keep your floor looking fresh.

### Safety and Prevention of Accidents

- (i) Wet floors can be slippery. Ensure suitable entrance matting is used to prevent the entry of water. Any water on the floor even small drips from umbrellas etc., must be mopped up at once.
- (ii) Spillages of water, grease, food, chemicals and other foreign materials may also cause the floor to become slippery. Wipe up spills immediately with an absorbent cloth and then wash thoroughly with Xtrialfoot Spot Cleaner or Cleaner/Maintainer, properly diluted, until completely clean. Rise and allow to dry thoroughly.
- (iii) Many furniture polishes and glass cleaners contain chemicals and silicones which, in contact with the floor, may cause slipperiness. Even small amounts of overspray can create a hazard.
- (iv) When washing, exclude traffic from all treated areas until completely dry. Even damp floors can be slippery.
- (v) Be careful with the use of airborne insecticide, disinfectant and perfume sprays. Some contain oils or solvents which may settle on the floor in sufficient quantity to cause slipperiness.

### Maintenance and Protection

- (i) Vacuum or brush the floor regularly to remove dust and grit.
- (ii) Suitable entrance barrier matting or walk off mats when properly serviced can effectively remove many abrasive and foreign materials from foot traffic and cut down on tracked-in water. These will reduce the maintenance requirement in entry areas and extend the life of the floor. A minimum of two full strides of entrance matting is recommended.
- (iii) Some rubber or latex backed mats as these may leave stains. Moduleo® recommend the use of Turtle Mat products.
- (iv) Some airborne insecticides may also harm the surface of the tile.
- (v) Protect against scratching from furniture feet by using wide free moving castors, glides, rollers or felt pads. Use furniture cups under heavy items or appliances to prevent indentation.
- (vi) Do not use small or narrow castors or those with crowned tread, as they can damage the floor.
- (vii) Do not allow cigarettes, matches or other very hot items to contact the floor.

### Selection of Maintenance Products

- (i) Xtrialfoot supplies a range of maintenance products that are recommended for cleaning Moduleo® Design Floors. Products containing soap or unsuitable detergents such as washing up liquid may leave hard-to-remove film or residue on the surface. These can detract from the appearance and may be slippery.
- (ii) Do not use products at too high a concentration as this may leave a surface residue.
- (iii) Xtrialfoot maintenance products are carefully manufactured to produce the highest performance when used in accordance with the instructions on the containers.

### General floor maintenance

Whilst Moduleo® has made every attempt to ensure that this information is accurate and reliable at the time of its publication, we cannot accept responsibility for any errors, omissions, inaccuracies or any changes that have occurred since the date of publication or for the results obtained from the use of such information.

All floors should be swept and dust mopped daily, following which soiling and marking can be removed using the appropriate method described below.

Before commencing work, put out signs to warn people that cleaning is in progress.

## Scrubber Drying - Ideal for large areas

Scrubber dryers may be used for high productivity removal of soiling and some scuff mark removal. Spray cleaning may be required to remove heavier surface marking.

- i) Follow daily sweeping and dust mopping instructions.
- ii) Prepare solution of Xtrafloor Cleaner Maintainer as per label and pour in to the dispensing tank. The scrubber dryer should be fitted with a red 3M nylon scrubbing pad (or equivalent).
- iii) Scrub entire floor area.
- iv) Remove "Caution" signs. Ensure all equipment is cleaned thoroughly after use and stored safely.

## Tips - Dealing with spills

- i) Spills of water, grease, food, chemicals and other foreign matter may cause the floor to become slippery.
- ii) Wipe up spills immediately with an absorbent cloth and then wash thoroughly using Xtrafloor Spot Remover as directed on the label or properly diluted Xtrafloor Cleaner Maintainer until the spill area is completely clean.
- iii) Allow the floor to dry thoroughly.

## Notes

- i) Moduleo® products should not be buffed with any pad more abrasive than a red 3M pad (or equivalent).
- ii) Entrance mats, when properly serviced, can effectively remove any abrasive and foreign materials from foot traffic and cut down on tracked in water. Moduleo® recommend a minimum of two full strides of entrance matting.

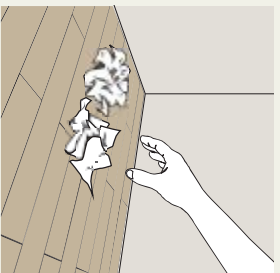


Figure 1



Figure 2

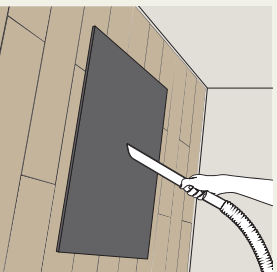


Figure 3

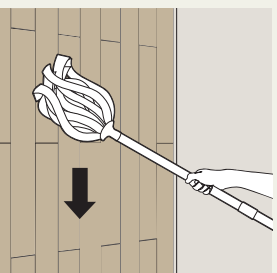


Figure 4

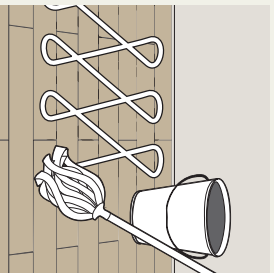


Figure 5

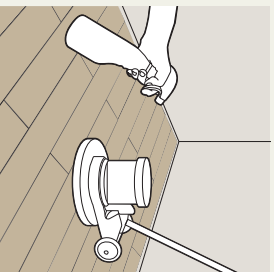


Figure 6

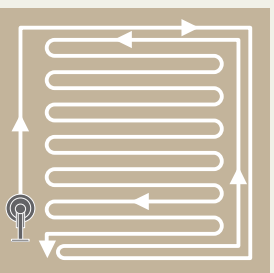


Figure 7

## Preventative maintenance

- 1** Place non-rubber doormats at entrances to stop large amounts of dirt from getting indoors. Moduleo® recommend the use of Furtle Mat products.
- 2** Use felt under furniture and chair legs. Rolling office chairs should be fitted with non-rubber casters.
- 3** Clean the floor at least once a week with a vacuum cleaner or mop. You will need to do this more often if you use the floor intensively.
- 4** We advise that you only use recommended cleaning products, as aggressive cleaning products may damage the floor.
- 5** Stiletto heels can also damage the floor.
- 6** Avoid long-lasting exposure to direct sunlight. Use curtains or blinds at peak times to minimise the effect of direct sunlight. Most types of floor discolor under the influence of direct sunlight. To avoid colour discrepancies, you should move loose floor coverings present with a certain degree of regularity.



### Xtrafloor maintenance products as recommended by Moduleo®

Our range of cleaning products have been specially formulated for use with Moduleo® products and most vinyl, rubber and linoleum floors.

#### Xtrafloor Cleaner Maintainer

Our concentrated cleaner has a fresh aroma for routine cleaning. Suitable for use with all cleaning methods including manual, spray buffing and scrubber-drying. Availability: 1Ltr / 2.5Ltr

#### Xtrafloor Spot Remover

A ready to use cleaner with a fresh aroma. Formulated for removal of spills and other deposits. Availability: 500ml

### Xtrafloor underlay - designed to be the perfect partner for Click as recommended by Moduleo®

Adding to the already long list of benefits of using Click, Xtrafloor underlay provides a fantastic foundation to your floor. Consisting of up to 93% natural raw materials, it is particularly suited for the floating installation under Click.

- Smooths out small subfloor irregularities
- Easier installation
- Improved sound insulation and comfort
- Eco-friendly

### Technical data

#### Composition:

Permanent resilient underlayment including mineral fillers and Polyurethane binder.

#### Thickness:

Approx. 1.5 mm (+/- 0.1 mm)

#### Roll format:

Approx. 10 m x 1 m (10m<sup>2</sup> per roll)

#### Weight per sqm:

1.5 kg/m<sup>2</sup>

#### Weight per roll:

15 kg/roll

#### Fire behaviour:

Bfl - S1 as per EN 13501-1

#### Footfall sound absorption:

Approx. 12db/EN 140-5



a division of ivo group

23 Royal Scot Road ■ Pride Park ■ Derby ■ DE24 8AJ ■ UK  
Tel: 01332 851500 ■ Fax: 01332 851501  
salesuk@moduleo.com ■ www.moduleo.co.uk