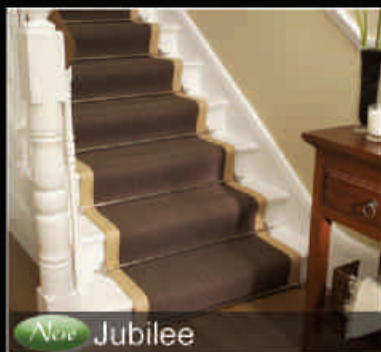




Luxury  
Carpet  
Accessories

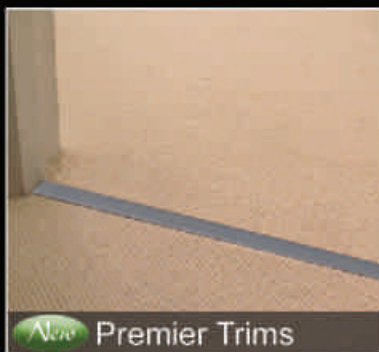


*New* Jubilee



STAIRRODS  
(UK) Ltd

CONSETT, ENGLAND



*New* Premier Trims



Beaumont In  
Polished Brass



Beaumont In  
Satin Brass



Vue In  
Antique Brass



Vue In  
Chrome Finish



Louis In  
Pewter finish



Louis In  
Black finish

## Royale

Triangular stair rods  
featuring traditional finials



Our Royale range features triangular rods with a choice of trefoil, fleur de lys or flat finials. They are thick gauge, hollow rods and each one is hand made to your specification.

The rods and brackets are available in a selection of seven finishes: polished brass, antique brass, satin brass, chrome, satin nickel, pewter and black

**Information** When ordering, specify Royale Runner for runner carpets or Royale Front Fix for fully fitted carpets and state the finish, finial and length. Royale Side fix is no longer available. Royale rods are made to measure - see measuring guidelines on the back page.

Hollow stair rods  
featuring ornate finials

## Eastern Promise



Dune  
in Polished Brass  
showing Plain rod



Dubai  
in Antique Brass  
showing Reeded rod



Cairo  
in Satin Nickel  
showing Spiral rod



Dubai  
in Chrome  
showing Plain rod



Cairo  
in Pewter  
showing Reeded rod



Dubai  
in Black  
showing Spiral rod

The Eastern Promise rods are thick gauge and hollow with a 5/8" (16mm) diameter. The rods have large, ornate finials and are perfect for stair runners on grand staircases.

The range features three finial designs and a choice of plain, reeded or spiral rods. There is a selection of seven finishes available: polished brass, antique brass, satin brass, chrome, satin nickel, pewter and black.

**Information** When ordering, specify Eastern Promise Runner for runner carpets or Eastern Promise Front Fix for fully fitted carpets and state the finish, finial, rod type and length. Eastern Promise rods are made to measure - see measuring guidelines on the back page.

Woburn in  
Polished  
Brass



## Premier

Standard  
finishes

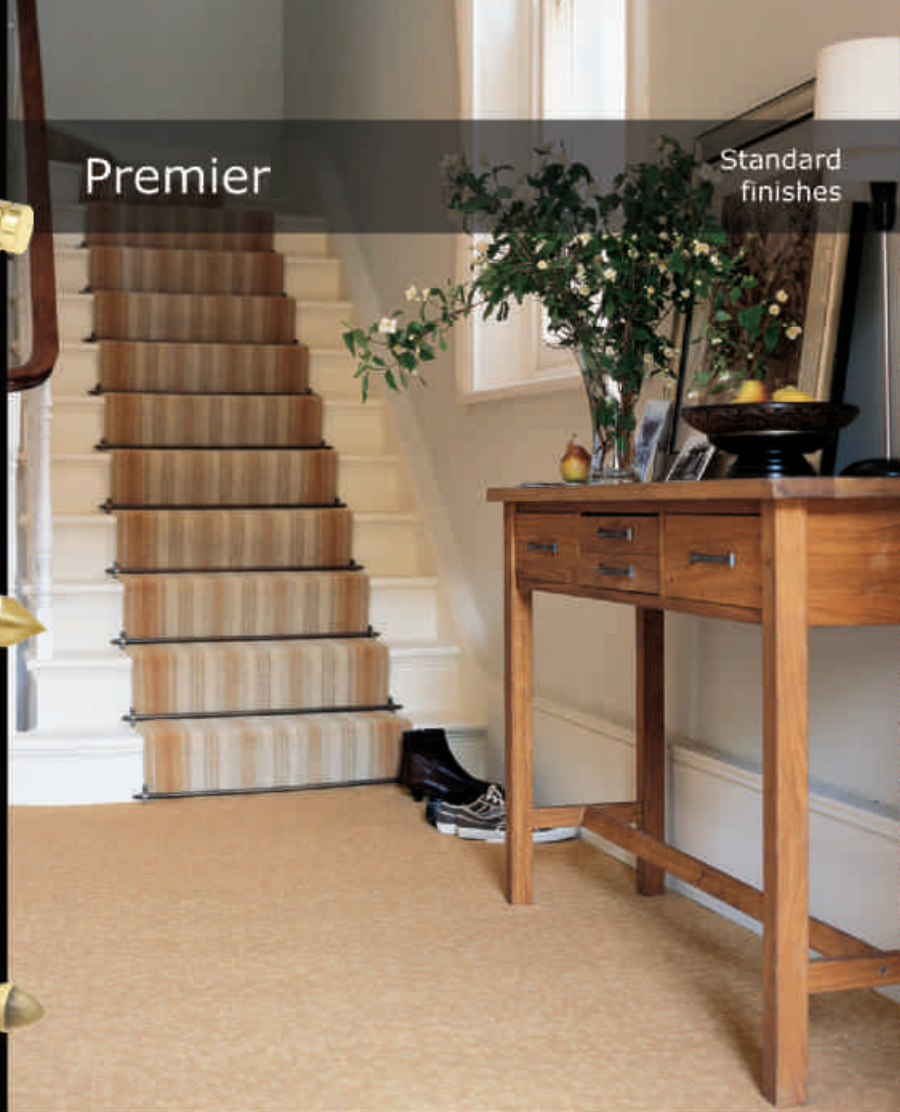
Hanover  
in Satin  
Brass



Lancaster  
in Antique  
Brass



Windsor  
in Antique  
Bronze



The Premier solid core stair rods for runners and fully fitted carpets are designed for any location, from cottage to hotel.

Made traditionally, each finial is turned onto the rods using a lathe and therefore one-piece and the rods come in three diameters: 1/2" (12.5mm), 5/8" (16mm) and 3/4" (19mm).

**Information** When ordering, specify Premier Runner for runner carpet, or Premier Front Fix or Side Fix (no finials) for fully fitted carpet and state the finish, finial, and length. Premier rods are made to measure - see measuring guidelines on the back page.

Specialised  
finishes

Premier



Chatsworth  
In Chrome



Lancaster  
In Brushed  
Chrome



Woburn  
In Polished  
Nickel



Hanover  
In Satin  
Nickel



Windsor  
In  
Pewter

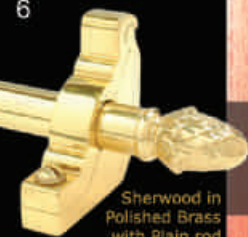


Balmoral  
In  
Black

Due to popular request, we have introduced three new contemporary finishes in the Premier range: Polished Nickel, Brushed Chrome and Antique Bronze; this means we now offer ten finishes in the Premier range.

Please also see our new Premier Trims for doorways on page 19, which co-ordinate.

**Information** Standard finishes: polished brass, antique brass, antique bronze and satin brass. As seen on page 4.  
Allow three weeks delivery for specialised finishes: chrome, satin nickel, brushed chrome, polished nickel, pewter and black.



Sherwood in Polished Brass with Plain rod



Arran in Antique Brass with Spiral rod



Bordeaux in Satin Nickel with Reeded rod



Sherwood in Chrome with Spiral rod



Arran in Pewter with Plain rod



Bordeaux in Black with Reeded rod

# Country

Hollow stair rods featuring decorative finials



Our Country Range comes in a wealth of options.

There are two diameters 1/2" (12.5mm) and 5/8" (16mm), a selection of seven finishes: polished brass, antique brass, satin brass, chrome, satin nickel, pewter and black, and three rod types: reeded, spiral and plain.

Choose any of the three finial designs in any combination.

**Information** When ordering, specify Country Runner for runner carpets or Country Front Fix or Side Fix (no finials) for fully fitted carpets and state the finish, finial, rod type and length. Country rods are made to measure - see measuring guidelines on the back page.

Contemporary  
stair rods

Vision



Arrow In  
Polished Brass



Piston In  
Antique Brass



Sphere In  
Satin Nickel



Arrow In  
Chrome



Piston In  
Pewter



Balladeer  
In Black

The Vision stair rod range features a choice of modern finial designs for contemporary decor. The rods are thick gauge, hollow 1/2" (12.5mm) diameter with a choice of Sphere, Piston, Arrow and Balladeer finials.

There is a selection of seven finishes: polished brass, antique brass, satin brass, chrome, satin nickel, pewter and black.

**Information** When ordering, specify the finish, finial and length. Vision rods are made to measure - see measuring guidelines on the back page.



Rose in  
Polished Brass



Amber in  
Antique Brass



Rainbow in  
Satin Nickel



Sky  
in Chrome



Rainbow  
in Pewter



Amber  
in Black

## Crystal

Hollow stair rods  
featuring crystal finials



The Crystal stair rods feature cut finials in a choice of four colours. The rods are thick gauge, hollow and 1/2" (12.5mm) diameter and come in a selection of seven finishes: polished brass, antique brass, satin brass, chrome, satin nickel, pewter and black.

For a period look consider amber finials with pewter rods, whilst satin nickel rods and Sky finials create a strikingly contemporary feel - the choice is yours.

**Information** When ordering, specify Crystal Runner for runner carpets or Crystal Front Fix for fully fitted carpets and state the finish, crystal and length. Crystal rods are made to measure - see measuring guidelines on the back page

Wooden stair rods  
featuring solid tips

Tudor



Dark Wood  
In Polished  
Brass



Light Wood  
In Antique  
Brass



Dark Wood  
In Satin  
Nickel



Light Wood  
In Chrome



Dark Wood  
In Pewter



Light Wood  
In Black

Our Tudor range of stair rods is made from solid oak in a dark or light wood and captures the natural styling of classical, wooden stair rods.

The rods, metal tips and solid trefoil brackets are available in a selection of seven finishes: polished brass, antique brass, satin brass, chrome, satin nickel, pewter and black.

**Information** When ordering, specify Tudor Runner for runner carpets or Tudor Front Fix for fully fitted and state wood colour, bracket/tip finish and length. The side fix is no longer available. Tudor rods are made to measure - see measuring guidelines on the back page.

## Blacksmith

Hand beaten  
stair rods



Ball  
Finial



Spear  
Finial



Flat  
Finial

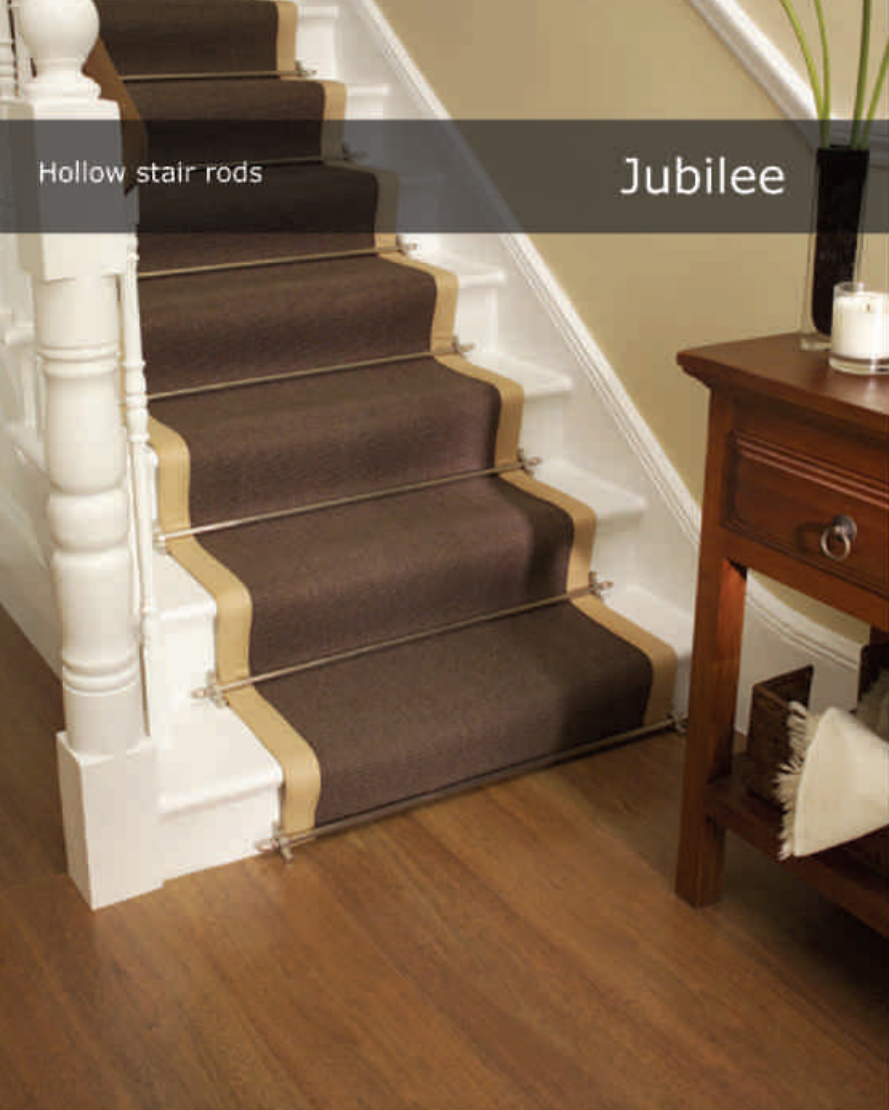
Our Blacksmith range of wrought iron stair rods is designed by Northumbrian Blacksmith Rodney Brittain. Using traditional, hot metalwork techniques, the simplicity of design is appealing and equally suited to rustic properties as modern townhouses. The rods are made from 1/2" (12.5mm) solid steel, individually beaten into shape and then giving a protective coating to prevent rust.

There are three designs, all ideal for runners and fitted carpets.

**Information** Blacksmith rods are in stock lengths of 24" (60.9cm), 26" (66cm), 28" (71.1cm), 30" (76.2cm), 32" (81.3cm), 34" (86.4cm), 36" (91.4cm), 38" (96.5cm), 40" (101.6cm), 42" (106.7cm), 44" (111.8cm), 46" (116.8cm) & 48" (121.9cm) The Blacksmith rods are suitable for fitted and runner carpets.

Hollow stair rods

## Jubilee



We have launched a new range to celebrate the Queen's Jubilee. To save fitting time, the finials are already attached to the brackets. Brackets can easily accommodate underlay and gripper, unlike other budget rods sold online.

The Jubilee range are hollow 3/8" (9mm) diameter stair rods and are available in a selection of six finishes: brass, antique brass, satin nickel, chrome, pewter and black.

**Information** Jubilees are supplied in 2 lengths - Option 1 fits carpet up to 27.5" (70cm) in width, and Option 2 fits carpet up to 35" (89cm) in width. Suitable for runner carpets only. The rods are easily cut down with a hacksaw. Please tell us the finish required.



Brass



Antique Brass



Satin Nickel



Chrome



Pewter



Black



Brass



Bronze



Satin Nickel



Chrome



Pewter



Black

## Homepride

Hollow stair rods  
featuring acorn finials



The Homepride range of hollow stair rods are 1/2" (12.5mm) diameter and a quick and easy way to add style to a staircase.

They come in standard lengths, which can be cut to size on site, and six finishes brass, bronze, satin nickel, chrome, pewter and black. Mix and match finial and rod finishes for an individual look. Joint door thresholds co-ordinate with the Homepride range (except black).

**Information** When ordering, specify Homepride Runner for runner carpets or Homepride Front Fix or Side Fix (no finials) for fully fitted carpet and state the finish. Homepride rods come in stock sizes which, are easily cut to size onsite.

Hollow stair rods  
with universal bracket

## Easyrods



Brass



Bronze



Chrome



Black

Easyrods are a stylish budget option for those looking for stair rods. Easyrods are part of our "Easy" range of products - Easybind, Easystuds and now Easyrods are a quick and cost effective way of enhancing your stairs and hallways. Easyrods are hollow anodised, 3/8" (9mm) diameter stair rods and are available in four finishes brass, bronze, chrome and black. Regardless of the thickness of your carpet, the Easyrod Universal bracket will fit perfectly.

**Information** Easyrods are supplied in 30" (76cm) stock lengths (for carpet up to 27" (69cm) in width). Longer lengths are available. Suitable for runner and fully fitted carpets - the same fixing bracket is used for both. Please specify finish and length when ordering - rods are easily cut to size on site.

## Star Grip

Dual purpose rods

Brass

Chrome

Bronze

Black

Star Grip is a neat and stylish way to transform your stairs. It is easy to install and its design means that it can be the sole means to attach a stair carpet rather than having to use gripper too. Alternatively, Star Grip can be fitted to an existing stair carpet to create an eye-catching feature to your stairs, giving it a new lease of life.

Available in a selection of four finishes: brass, bronze, chrome and black. Rod finish and inlay finishes can be mixed.

**Information** Star Grip is available in a stock length of 36" (91.5cm). Longer lengths (up to 72"/182cm) are available. When ordering please specify the finish and inlay colour. Star Grip rods come in stock sizes, which are easily cut on site.

# Rods for Fully Fitted Carpets

It is a frequent assumption that stair rods are only available for runner carpets. However, if your stair carpet is fully fitted, it is possible to have stair rods.

## Side Fix

We can supply our Premier, Country, and Homepride rods with Side Fix brackets. The Side Fix bracket is not suitable for stairs with winders, because it is difficult to fix the brackets to the wall as the stair turns, due to the wall not being at 90 degrees to the step. The Front Fix is an option here.



## Front Fix

Our Royale, Eastern Promise, Premier, Country, Crystal, Tudor and Homepride rods can be supplied with a front fix bracket (image shows Front Fix for round rods). This allows you to have a stair rod with a decorative finial on fully fitted carpet.



## Side/Hinged Fix

We can even cater for stairs with both runner and fully fitted carpet on the same step! Our Premier and Country rods can be supplied with one Side Fix bracket and one Hinged bracket.





75mm in Polished Brass



75mm in Antique Brass



107mm in Satin Nickel



107mm in Chrome



134mm in Pewter



134mm in Black

## Skiffers

Solid brass  
corner protectors



Our Skiffers are beautiful, solid brass castings designed to prevent damage to skirting boards and wall corners.

It is all too easy to scuff corners, for example when moving furniture or vacuuming, but Skiffers are excellent at preventing this and are an attractive decorative detail to an aspect of the home which can look rather bland.

**Information** Available in 75mm, 107mm & 134mm sizes. There is a selection of seven finishes available: polished brass, antique brass, satin brass, chrome, satin nickel, pewter and black.

Solid brass  
traditional clips

## Victorian Stair Clips



Polished Brass



Satin Brass



Antique Brass



Satin Nickel



Chrome



Pewter



Black

Stair clips have enjoyed a revival and our design is inspired by a traditional Victorian clip but carefully updated to include modern fitting technology.

The Victorian Stair Clips are available in a selection of seven finishes: polished brass, antique brass, satin brass, chrome, satin nickel, pewter and black.

**Information** Victorian Stair Clips are supplied in pairs with fixing screws. Traditionally, stair runners were fitted without gripper; however, today carpet manufacturers recommend gripper is always used.

# Posh

Solid brass  
door thresholds

Posh Narrow in  
Antique Bronze  
with plain inlay

Posh Narrow in  
Polished Brass  
with patterned inlay

Posh Wide in  
Antique Brass  
with patterned inlay

Posh Wide in  
Satin Brass  
with plain inlay

Posh is our solid brass trim that complements quality flooring, featuring a plain or patterned inlay strip that conceals the fixings, resulting in a tidy finish. Posh can be used to join a variety of surfaces, for example, carpet to carpet, carpet to vinyl or wood to wood. Posh in polished brass finish will need polishing occasionally; however, it will last a lifetime. No polishing is required for antique brass, antique bronze or satin brass finishes.

**Information** Posh is available in 32" (81.2cm), 36" (91.5cm) and 108" (274.3cm) lengths and 38mm (1 1/2") & 55mm (2 1/8") widths. The inlay is fixed with adhesive tape (supplied). Use in conjunction with carpet gripper for a ruck-free installation in doorways.



Solid brass carpet  
and flooring trims

New

## Premier Trims

### Standard Finishes

Brass



Satin Brass



Antique Brass

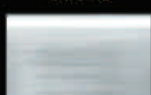


Antique Bronze

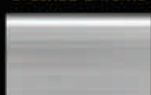


### Specialised Finishes

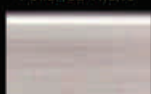
Chrome



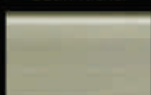
Brushed Chrome



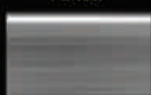
Polished Nickel



Satin Nickel



Pewter



We would like to introduce our new range of solid brass carpet trims. Our new trims are offered in similar finishes to our Premier range of carpet stair rods (except black) and compliment high end accessories around the home. With nine finishes to choose from and four profiles we are sure these luxury trims will offer the finishing touch to your carpets and flooring.

**Information** Available in 90cm & 270cm lengths and 4 profiles. The registered Double Z, base features a removable side to enable use between carpet and hard floor/laminate. For Technical reasons the Double Z base is aluminium.



Double Z



Square



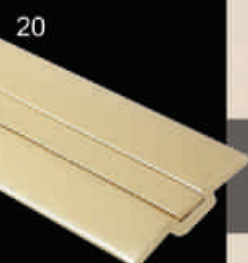
Single



Cover

## Joints

Plated door thresholds



Brass finish



Satin Brass finish



Bronze finish



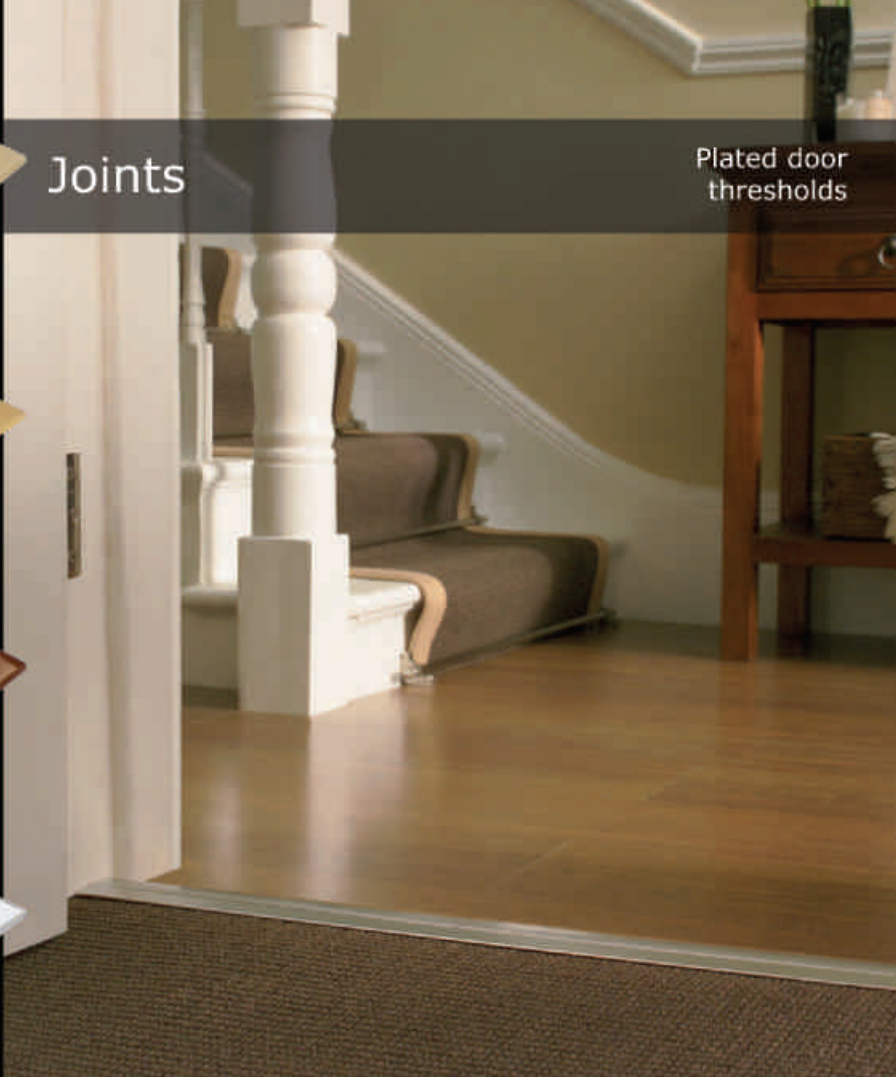
Chrome finish



Satin Nickel finish



Pewter finish



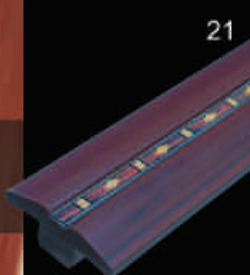
Joint door thresholds have been designed to complement the Homepride range of Stair rods (excluding the black finish). The chrome Joints features a genuine chrome plated finish. Joints can be used to join almost any combination of flooring, for example carpet to carpet, carpet to vinyl, wood to wood.

**Information** Joints are 38mm (1 1/2") in width. Available in 32" (81.2cm), 36" (91.5cm) & 96" (243.8cm) lengths. Chrome finish available in 32" (81.2cm), 36" (91.5cm) & 72" (182.9cm) lengths. The inlay is fixed with adhesive tape (supplied). Use in conjunction with carpet gripper for a ruck-free installation in doorways.

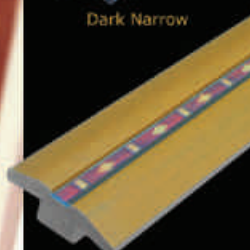


Wood effect  
door thresholds

# Symwood



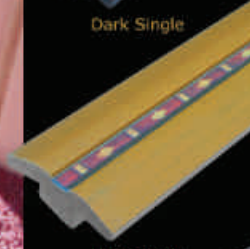
Dark Narrow



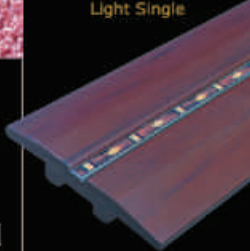
Light Narrow



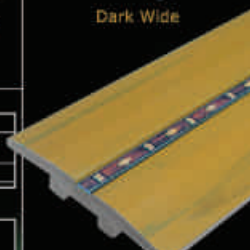
Dark Single



Light Single



Dark Wide



Light Wide

Virtually all flooring, regardless of price, is automatically supplied with aluminium strips. They are generally unattractive and dent easily. There is an alternative - our range of door thresholds. Symwood is a revolutionary product for doorways. It is manufactured from a synthetic material that has the look of real wood. An inlay strip conceals the fixings so the whole unit is tidy and attractive. Available in 45mm (1 3/4") & 85mm (3 3/8")

**Information** Symwood is available as a Double (carpet to carpet) or Single (carpet to vinyl). Note: Singles only available in Narrow width. Stock size is 36" (91.5cm), available in increments of 12" (30.5cm) up to 9' (274.3cm). Symwood is only suitable for carpets fitted on underlay and gripper.



We have a new product designed to overcome the problem that exists in almost every home - the difference in heights between flooring. Usually, this situation

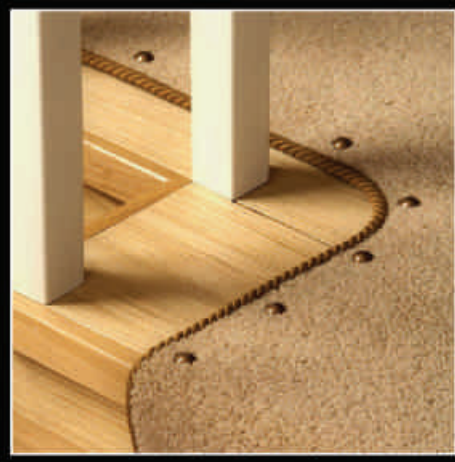


results in an unsightly step, detracting from the appearance of a good quality installation. By using our new Easyshims, this problem is eliminated and the result is an almost invisible ramp between flooring. They also make life easier for wheel chairs and vacuum cleaners!

**Information** Available heights: 1/4"/6mm for 18mm hard floor, 3/8"/9mm for 21mm hard floor & 1/2"/12mm for 24mm hard floor (height measurements nominal). Each shim is 36"/91cm wide with an 8"/200mm ramp. Order Side Shims when the Easyshim protrudes into a hall way.

## Carpet Studs

Decorative carpet pins

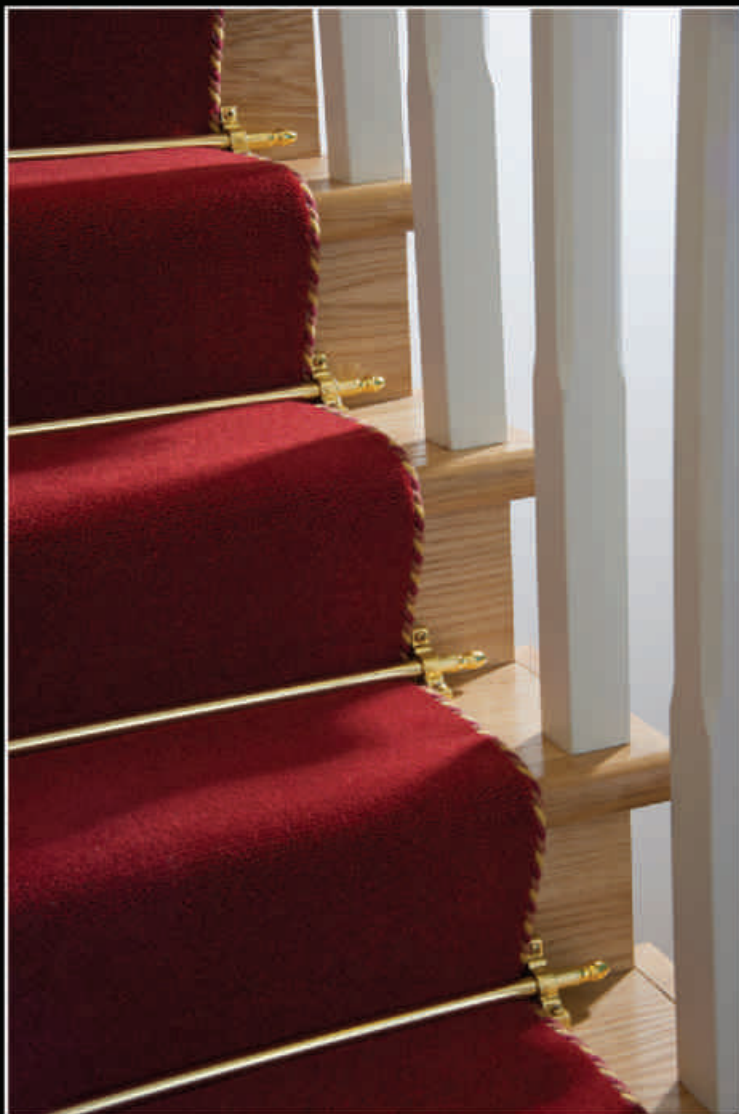


Our Carpet Studs are not only a very attractive addition to your stairs and landing, they also have practical uses for the fitting of carpets, used in conjunction with Easybind. Carpet Studs are an alternative to using metal strips (known as single naplocks) or turning the carpet and tacking. Carpet Studs can be used to solve the problem of visible underlay, as the carpet can be tacked to the riser, in doing so concealing the underlay. Carpet Studs make a feature of newell posts and landings.

**Information** Available finishes (shown from left to right) brass, antique brass, chrome, satin nickel & pewter.



Our Easybind carpet binding has become extremely popular since its launch. It enables carpet fitters to bind a carpet or runner on site, using an attractive rope trim, in just minutes. Easybind provides an alternative to whipping or binding and can save up to a week's delay in having your new carpet fitted. There is a selection of 25 different colours, including new colours *Black Pennell* and *Black Gnat*.



**Information** Ask your retailer for further information on Easybind. See [www.easybind.co.uk](http://www.easybind.co.uk) for further information including fitting instructions, installation movie and sampling details.

**General Information:**

Stair rods can be made to any length. Most ranges can be curved if a template is provided. Our brass stair rods are lacquered to inhibit tarnishing and require no polishing - to clean, wipe with a damp cloth.

**Important:** Apart from Star Grip, stair rods are for decorative use only. Carpets must be secured by another means of installation.

**Please note:** While we attempt to make all pictures as close as possible to the final product, due to the nature of our manufacturing processes and the hand finished manufacture of our ranges, finishes may vary subtly from the images portrayed in this brochure.

**Measuring Guidelines:**

*As many of our rods are made to measure, we have recommendations for the tip-to-tip measurements we require:*

**Premier 1/2", Country 1/2", Tudor, Crystal, Vision, Homepride and Blacksmith Ball & Flat:**

*add 4"/10cm over the width of the carpet (2"/5cm each side)*

**Premier 5/8", Country 5/8" and Eastern Promise Dune:**

*add 5"/12.5cm over the width of the carpet (2.5"/6.25cm each side)*

**Premier 3/4", Royale, Eastern Promise Dubai & Cairo and Blacksmith Spear:**

*add 6"/15cm over the width of the carpet (3"/7.5cm each side)*

**Front Fix (fully fitted carpet):**

*The rod should come in approximately 1" (2.5cm) from the wall.*

**Featured Carpets:** *(any carpets not listed below are unknown)*

Cover & Page 9 : Anta - [www.anta.co.uk](http://www.anta.co.uk)

Page 2 & 4: Brintons Carpets - (p2) National Trust Collection, (p4) Kenilworth Gold  
[www.brintons.net](http://www.brintons.net)

Page 6: Grosvenor Wilton - Esplanade - [www.grosvenorwilton.co.uk](http://www.grosvenorwilton.co.uk)

Page 7: Brockway Carpets - Regatta - [www.brockway.co.uk](http://www.brockway.co.uk)

Page 8: Louis de Poortere - Richelou Escalier - [www.ldp.be](http://www.ldp.be)

Pages 10 - Orsa Aragon- [www.rogeroates.co.uk](http://www.rogeroates.co.uk)

Page 12 - Image courtesy of Woodside Joinery - [www.woodsidejoinery.com](http://www.woodsidejoinery.com)

**Note - Easyshims and Easybind not available in USA**

**For further Easybind information:** [www.easybind.co.uk](http://www.easybind.co.uk)

**For further Easyshim information:** [www.easyshims.co.uk](http://www.easyshims.co.uk)

**Stairrods (UK) Ltd**

Unit 6, Park Road North Ind Est,  
Blackhill, Consett,  
Co Durham, DH8 5UN  
T: +44 (0) 1207 591176  
F: +44 (0) 1207 591911  
E: [sales@stairrods.co.uk](mailto:sales@stairrods.co.uk)

**Stairrods Australia**

PO Box 1368 Rozelle  
Sydney, NSW 2039  
T: (04) 1030 4727  
F: (02) 8569 1743  
E: [sales@stairrods.com.au](mailto:sales@stairrods.com.au)

**Stairrods New Zealand**

31 Olive Road, Penrose  
Auckland, 1061  
T: +64 9 582 0070  
F: +64 9 526 0078  
E: [info@floorspace.co.nz](mailto:info@floorspace.co.nz)

**Europe:**

See [www.stairrods.eu.com](http://www.stairrods.eu.com)  
for details

**Canada:**

See [www.stairrods.ca](http://www.stairrods.ca)  
for details

**Stairrods USA**

See [www.stairrods.us](http://www.stairrods.us)  
for details