

Retail Directory

September 2011



Karndean
Designflooring

art|select

DA VINCI

Michelangelo

VAN GOGH

Renoir

Opus

Knight-Tile

Your space. Your needs. Your style.

Inside your new Karndean retail directory

- P.3 What's new?
- P.4-11 Art Select
- P.12-15 Da Vinci
- P.16-18 Michelangelo
- P.19-21 Van Gogh
- P.22-24 Renoir
- P.25-29 Opus
- P.30-33 Knight-Tile
- P.34 Compatibility
- P.35-56 Design Components
- P.57 Adhesives
- P.58 Versilay
- P.59-61 Cleaning and Maintenance
- P.62-63 Tools
- P.64 Karndean Project Registration
- P.65 Training Courses



NEW SP211 Mico



NEW WP414 Argen



NEW WP315 Aurum

Get the look



Karndean
Designflooring

New

**Van Gogh collection
from Karndean**

- Classically beautiful
- Authentic wood like grain
- Natural colour spectrum
- 15 year guarantee



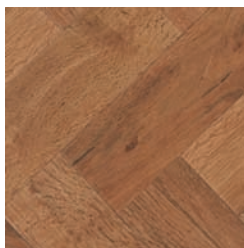
Your space. Your needs. Your style.

76mm x 228mm [3" x 9"] unless otherwise indicated

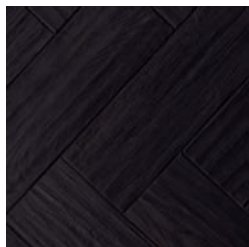
parquet range



AP01 Blond Oak



AP02 Auburn Oak



AP03 Black Oak

AP31 Russet Oak, Shaker Style
406mm x 406mm [16" x 16"]

oak royale range 1219mm x 178mm [48" x 7"]



RL01 Spring Oak



RL02 Summer Oak



RL03 Autumn Oak



RL04 Winter Oak

Specification

Thickness 3mm

Wear Layer 0.7mm

Bevelled edge Yes

Box quantity

3" x 9" 3.34m² 192 pieces16" x 16" 3.30m² 20 panels48" x 7" 3.25m² 15 planks

Split boxes not available

Retail MRP* inc VAT

£61.49

Chic exc VAT

£36.75

Retail MRP* inc VAT

£45.99

Chic exc VAT

£25.49

*MRP is manufacturers recommended price, this is our suggested price for sale to the consumer.

Further discounts for 'non residential' commercial projects over 100m² may be available. If granted, this price would be classed as a 'Chic Unique' project price. Please call 01386 820200 to register and obtain more information.

Commercial heavy duty woodplanks

915mm x 152mm [36" x 6"]

oak premier range



HC01 Dawn Oak



HC02 Morning Oak



HC03 Dusk Oak



HC04 Sundown Oak



HC05 Evening Oak



HC06 Midnight Oak

20 year guarantee : residential use

Specification

Thickness	3mm
Wear layer	0.7mm
Bevelled edge	Yes

Box quantity	36" x 6" 3.34m ² 24 planks
--------------	---------------------------------------

Split boxes not available

Retail MRP* inc VAT

£45.99

Chic exc VAT

£25.49

*MRP is manufacturers recommended price, this is our suggested price for sale to the consumer.

Further discounts for 'non residential' commercial projects over 100m² may be available. If granted, this price would be classed as a 'Chic Unique' project price. Please call 01386 820200 to register and obtain more information.



HC03 Dusk Oak

Extra Sales Opportunity : Don't forget your Floor Care kit

See P.60 for details 5

Commercial heavy duty woodplanks

20 year guarantee : residential use

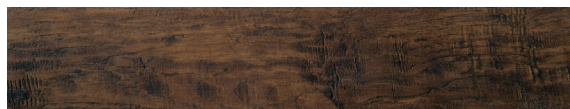
915mm x 152mm [36" x 6"]

handcrafted range

Registered emboss



EW01 Hickory Paprika



EW02 Hickory Peppercorn



EW03 Hickory Nutmeg



EW01 Hickory Paprika

Specification

Thickness	3mm
Wear layer	0.7mm
Bevelled edge	Yes

Box quantity	36" x 6" 3.34m ² 24 planks
--------------	---------------------------------------

Split boxes not available

Retail MRP* inc VAT

£45.99

Chic exc VAT

£25.49

*MRP is manufacturers recommended price, this is our suggested price for sale to the consumer.

Further discounts for 'non residential' commercial projects over 100m² may be available. If granted, this price would be classed as a 'Chic Unique' project price. Please call 01386 820200 to register and obtain more information.



Art Select display stand available

For more information call the Customer Service Team on 01386 820200. Alternatively speak to your Retail Business Manager.

Commercial heavy duty tiles

20 year guarantee : residential use

island limestone



LM01 Jersey



LM02 Guernsey

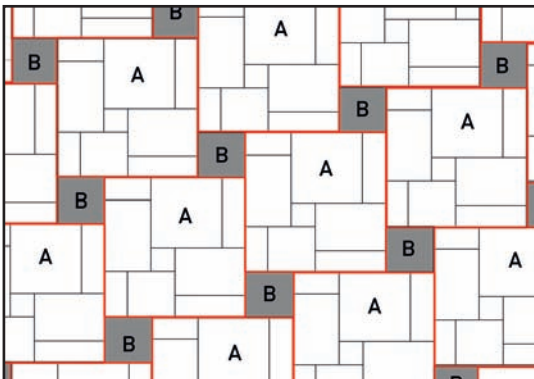


LM03 Alderney



LM04 Sark

NOTE: These products are supplied as a standard panel of 9 assorted tile sizes complete with a 3mm Design Strip and four 12" tiles. No other design options are available. Please see below for example installation diagram.



Specification

Thickness	3mm
Wear Layer	0.7mm
Bevelled edge	Yes
Box quantity	3.71m ²
4 x random panels	
4 x 12" x 12" tiles	
4 x additional design strips	

Split boxes not available

Retail MRP* inc VAT

£59.99

Chic exc VAT

£33.99

*MRP is manufacturers recommended price, this is our suggested price for sale to the consumer.

Further discounts for 'non residential' commercial projects over 100m² may be available. If granted, this price would be classed as a 'Chic Unique' project price. Please call 01386 820200 to register and obtain more information.



Island Limestone display stand available

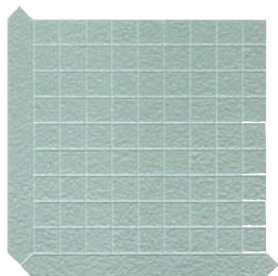
For more information call the Customer Service Team on 01386 820200. Alternatively speak to your Retail Business Manager.

Commercial heavy duty tiles

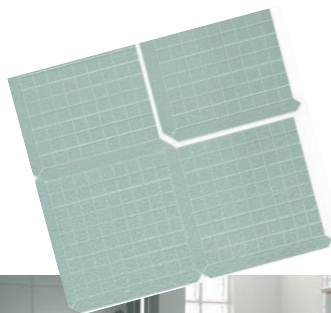
15 year guarantee : residential use

254mm x 254mm [10" x 10"]

glass



GS05 Glacier



NOTE: Each GS05 tile includes a decorative edging.



GS05 Glacier

Specification

Thickness	3mm
Wear layer	0.7mm
Bevelled edge	Yes
Box quantity	10" x 10" 2.064m ² 32 tiles

Split boxes not available

Retail MRP* inc VAT

£59.49

Chic exc VAT

£33.39

*MRP is manufacturers recommended price, this is our suggested price for sale to the consumer.

Commercial heavy duty tiles

802mm x 570mm [31.5" x 22.4"]

tudor brick



TB01 Tudor Brick

One pack of Tudor Brick contains:

- 4 panels (including two pieces of border and a corner – as shown below)
- 2 longer lengths of VG1 (710mm x 102mm)
- 4 shorter lengths of VG1 (471mm x 102mm)
- 6 CK25 corners



15 year guarantee : residential use

Specification

Thickness	3mm
Wear layer	varies 0.55mm-0.7mm
Bevelled edge	Varies
Box quantity	2.12m ² 4 panels

Split boxes not available

Retail MRP* inc VAT

£104.49

Chic exc VAT

£59.99

*MRP is manufacturers recommended price, this is our suggested price for sale to the consumer.

tudor brick

One pack of Tudor Brick contains design components to give you the option of laying the product in two ways. Laying the panels in either option detailed below will leave spare pieces of design components.

The lengths of VG1 are supplied slightly longer than are needed and will need to be trimmed to ensure the best floor installation.

Option 1. Laid in a rectangle



Laying this option will leave 2 shorter lengths of VG1 and 1 CK25 corner spare.

Option 2. Laid in a line



Laying this option will leave 1 longer length of VG1 spare.

tudor brick

Because of the nature of the brick panel, Tudor Brick is not recommended as a standalone floor and should always be installed with a VG1 surround.

A separate quantity of VG1 should be ordered to use as an infill around the panels, running from the edge of the room and surrounding Tudor Brick.



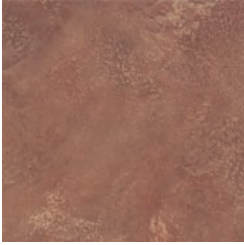
TB01 Tudor Brick

Commercial very heavy duty tiles

406mm x 406mm [16" x 16"] unless otherwise indicated

antique ceramic

Registered emboss



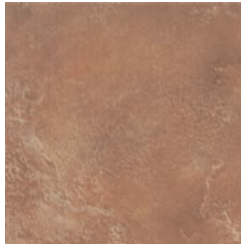
CK21 Espresso



CK22 Cappuccino



CK23 Latte



CK24 Mocha



CK25 Noir



CK26 Java

Antique Ceramic Borders

Exclusive to the Antique Ceramic Collection

IMPORTANT: Only Antique Ceramic borders can be used with this collection. See P.39 for options.



Borders Per 36" length **£8.25** **Corners** Each **£1.55**

20 year guarantee : residential use

Specification

Thickness	3mm
Wear layer	0.7mm
Bevelled edge	Yes
Box quantity	16" x 16" 3.30m ² 20 tiles

Split boxes not available

Retail MRP* inc VAT

£42.49

Chic exc VAT

£22.79

*MRP is manufacturers recommended price, this is our suggested price for sale to the consumer.

Further discounts for 'non residential' commercial projects over 100m² may be available. If granted, this price would be classed as a 'Chic Unique' project price. Please call 01386 820200 to register and obtain more information.



Antique Ceramic display stand available

For more information call the Customer Service Team on 01386 820200. Alternatively speak to your Retail Business Manager.

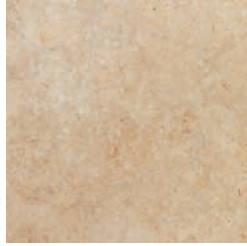
Commercial very heavy duty tiles

406mm x 406mm [16" x 16"] unless otherwise indicated

stone



LST01 Limestone



LST02 Sienna Limestone



LST03 Piazza Limestone



LST04 Spirito Limestone



LST05 Santi Limestone



Deluxe and Mini Stands available for the Da Vinci range. For more information call the Customer Service Team on 01386 820200. Alternatively speak to your Retail Business Manager for more in store display options.

da vinci

20 year guarantee : residential use

Specification

Thickness	3mm
Wear layer	0.7mm
Bevelled edge	Yes
Box quantity	
16" x 16"	3.30m ² 20 tiles

Split boxes not available

Retail MRP* inc VAT

£40.49

Chic exc VAT

£22.29

*MRP is manufacturers recommended price, this is our suggested price for sale to the consumer.

Further discounts for 'non residential' commercial projects over 100m² may be available. If granted, this price would be classed as a 'Chic Unique' project price. Please call 01386 820200 to register and obtain more information.

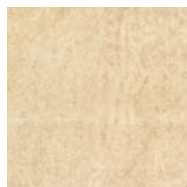


LST04 Spirito Limestone

Commercial very heavy duty tiles

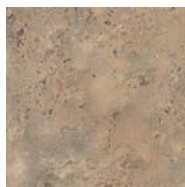
305mm x 305mm [12" x 12"] unless otherwise indicated

sandstone



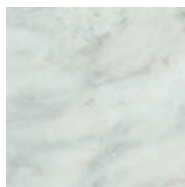
SS6 Cotswold

moonstone



TV72 Natural

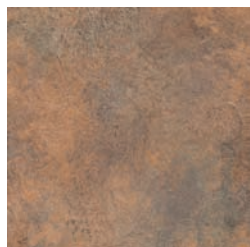
roman marble



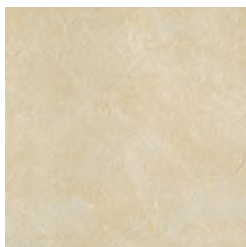
M45 Bianco

ceramic

406mm x 406mm [16" x 16"]



CC03 Sepia



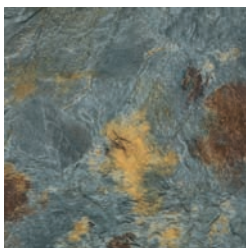
CC04 Alabaster

celtic slate

406mm x 406mm [16" x 16"]



CC06 Graphite



CC07 Hydria



CC08 Oxide

20 year guarantee : residential use

Specification

Thickness 3mm

Wear layer 0.7mm

Bevelled edge Yes

Box quantity

12" x 12" 3.34m² 36 tiles

16" x 16" 3.30m² 20 tiles

Split boxes not available

Retail MRP* inc VAT

£40.49

Chic exc VAT

£22.29

*MRP is manufacturers recommended price, this is our suggested price for sale to the consumer.

Further discounts for 'non residential' commercial projects over 100m² may be available. If granted, this price would be classed as a 'Chic Unique' project price. Please call 01386 820200 to register and obtain more information.



CC06 Graphite

Commercial very heavy duty woodplanks

915mm x 76mm [36" x 3"] unless otherwise indicated

woodplank



RP11 American Oak



RP12 Indian Teak



RP41 Australian Walnut



RP51 English Elm



RP61 Canadian Maple



RP66 Florence Mid Oak



RP67 Materia Dark Oak



RP73 Kenyan Tigerwood*



RP75 Swedish Birch



RP90 Fresco Light Oak



RP91 Lorenzo Warm Oak



RP92 Arno Smoked Oak



RP93 Medici Merbau

* Please note that as a feature of the design, these products incorporate a high colour variation between individual planks.

da vinci

20 year guarantee : residential use

Specification

Thickness	3mm
Wear layer	0.7mm
Bevelled edge	Yes
Box quantity	
36" x 3"	3.34m ² 48 planks

Split boxes not available

Retail MRP* inc VAT

£40.49

Chic exc VAT

£22.29

*MRP is manufacturers recommended price, this is our suggested price for sale to the consumer.

Further discounts for 'non residential' commercial projects over 100m² may be available. If granted, this price would be classed as a 'Chic Unique' project price. Please call 01386 820200 to register and obtain more information.



RP67 Materia Dark Oak

Extra Sales Opportunity : Don't forget your Floor Care kit

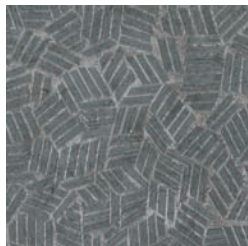
See P.60 for details 15

Commercial heavy duty tiles

15 year guarantee : residential use

305mm x 305mm [12" x 12"] unless otherwise indicated

metallica 406mm x 406mm [16" x 16"] — Registered emboss



MLC01 Tungsten



MLC07 Comet



MLC08 Atomic

NOTE: We recommend laying Metallica MLC07 and MLC08 tiles in a chequerboard style or incorporating a Design Strip. These tiles are directional.



MLC07 Comet & MLC08 Atomic

Registered emboss

Specification

Thickness	2.5mm
Wear layer	0.55mm
Bevelled edge	No
Box quantity	
16" x 16"	3.30m ² 20 tiles

Split boxes not available

Retail MRP* inc VAT

£38.49

Chic exc VAT

£21.29

*MRP is manufacturers recommended price, this is our suggested price for sale to the consumer.

Further discounts for 'non residential' commercial projects over 100m² may be available. If granted, this price would be classed as a 'Chic Unique' project price. Please call 01386 820200 to register and obtain more information.

Clip corners and Keysquares

See P.56 for details.

Commercial heavy duty tiles

305mm x 305mm [12" x 12"] unless otherwise indicated

italian mosaic

Registered emboss



MX92 Umbrian Nero



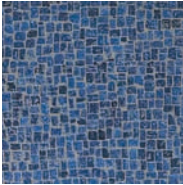
MX93 Neopolitan Brick



MX95 Ancient Onyx



MX97 Venetian Blue

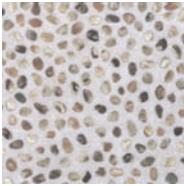


MX98 Adriatic Blue

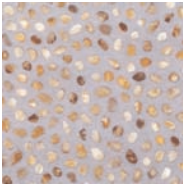
NOTE: These tiles are directional.

spanish pebble

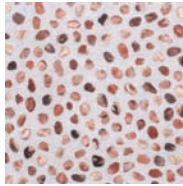
Registered emboss



MS1 Galician Quartz

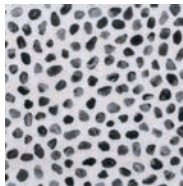


MS2 Navarra Chalk

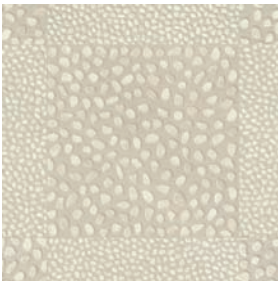


MS3 Catalonian Granite

NOTE: We recommend the use of Design Strips or Feature Strips with these tiles.



MS4 Santiago Lavastone



MS5 Andalucian Opal

NOTE:

This product is supplied as a standard panel with the inclusion of Keysquares and mini pebble Design Strips.

Specification

Thickness	2.5mm
Wear layer	0.55mm
Bevelled edge	No
Box quantity	
12" x 12"	3.34m ² 36 tiles
MS5	5.22m ²

Split boxes not available

Retail MRP* inc VAT

£38.49

Chic exc VAT

£21.29

MS5 Retail MRP* inc VAT

£42.49

Chic exc VAT

£23.89

*MRP is manufacturers recommended price, this is our suggested price for sale to the consumer.

Further discounts for 'non residential' commercial projects over 100m² may be available. If granted, this price would be classed as a 'Chic Unique' project price. Please call 01386 820200 to register and obtain more information.

915mm x 152mm [36" x 6"]

antique timber

Registered emboss



MP2 Bleached Pine



MP3 Burnt Ash



MP4 Scorched Oak



MP4 Scorched Oak

Registered emboss

Specification

Thickness	2.5mm
Wear layer	0.55mm
Bevelled edge	No
Box quantity	36" x 6" 3.34m ² 24 planks

Split boxes not available

Retail MRP* inc VAT

£38.49

Chic exc VAT

£21.29

*MRP is manufacturers recommended price, this is our suggested price for sale to the consumer.

Further discounts for 'non residential' commercial projects over 100m² may be available. If granted, this price would be classed as a 'Chic Unique' project price. Please call 01386 820200 to register and obtain more information.

1219mm x 178mm [48" x 7"]

LONGSTRIP 48/7



VG1-7 Bracken



VG5-7 Burnt Ginger



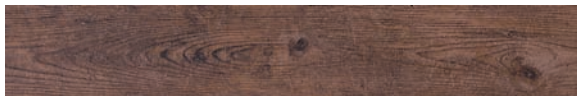
VGW39T Antique Karri



VGW44T Lancewood*



VGW50T Macrocapra



VGW51T Aged Kauri



VGW52T Auckland Oak*

* Please note that as a feature of the design, these products incorporate a high colour variation between individual planks.

Specification

Thickness	3mm
Wear layer	0.55mm
Bevelled edge	No
Box quantity	
48" x 7"	3.25m ² 15 planks

Split boxes not available

Retail MRP* inc VAT

£33.99

Chic exc VAT

£18.99

*MRP is manufacturers recommended price, this is our suggested price for sale to the consumer.

Further discounts for 'non residential' commercial projects over 100m² may be available. If granted, this price would be classed as a 'Chic Unique' project price. Please call 01386 820200 to register and obtain more information.

**FITTER FRIENDLY
SAVE INSTALLATION
TIME BY USING**

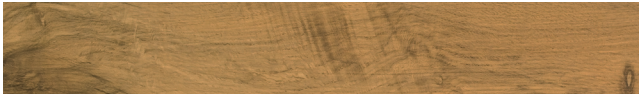
LONGSTRIP 48/7

1219mm x 178mm [48" x 7"]

LONG STRIP 48/7



VGW51T Aged Kauri



VGW53T Wellington Oak*



VGW54T Christchurch Oak*



VGW70T Smoked Oak*



VGW52T Auckland Oak



VGW71T Reclaimed Maple



VGW76T Vintage Pine



VGW80T White Washed Oak



VGW81T Country Oak



Van Gogh display stand available

For more information call the Customer Service Team on 01386 820200. Alternatively speak to your Retail Business Manager.

Commercial heavy duty woodplanks

van gogh

15 year guarantee : residential use



VGW82T Distressed Oak



VGW83T Frosted Birch



VGW84T Birch



VGW85T French Oak



VGW86T Classic Oak



VGW87T Walnut



VGW88T Brushed Oak



VGW89T Ebony

* Please note that as a feature of the design, these products incorporate a high colour variation between individual planks.

Specification

Thickness	3mm
Wear layer	0.55mm
Bevelled edge	No
Box quantity	48" x 7" 3.25m ² 15 planks

Split boxes not available

Retail MRP* inc VAT

£33.99

Chic exc VAT

£18.99

*MRP is manufacturers recommended price, this is our suggested price for sale to the consumer.

Further discounts for 'non residential' commercial projects over 100m² may be available. If granted, this price would be classed as a 'Chic Unique' project price. Please call 01386 820200 to register and obtain more information.

**FITTER FRIENDLY
SAVE INSTALLATION
TIME BY USING**

LONGSTRIP 48/7

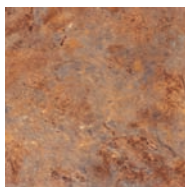
Extra Sales Opportunity : Don't forget your Floor Care kit

See P.60 for details 21

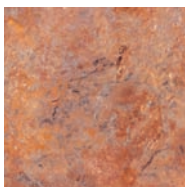
Commercial heavy duty tiles

305mm x 305mm [12" x 12"] unless otherwise indicated

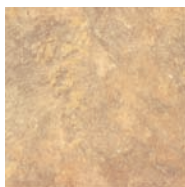
fuego



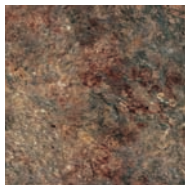
J83 Bronze



J84 Copper

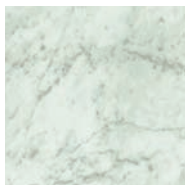


J86 Gold

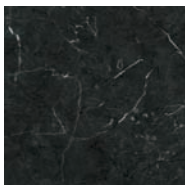


J89 Mercury

marble



M42 Ivory



M43 Ebony

Specification

Thickness 2.5mm

Wear Layer 0.55mm

Bevelled edge No

Box quantity
12" x 12" 3.34m² 36 tiles

Split boxes not available

Retail MRP* inc VAT

£31.99

Chic exc VAT

£17.99

*MRP is manufacturers recommended price, this is our suggested price for sale to the consumer.

Further discounts for 'non residential' commercial projects over 100m² may be available. If granted, this price would be classed as a 'Chic Unique' project price. Please call 01386 820200 to register and obtain more information.

Commercial heavy duty tiles

renoir

15 year guarantee : residential use

concrete 406mm x 406mm [16" x 16"]



REN31 Oregon



REN32 Nevada

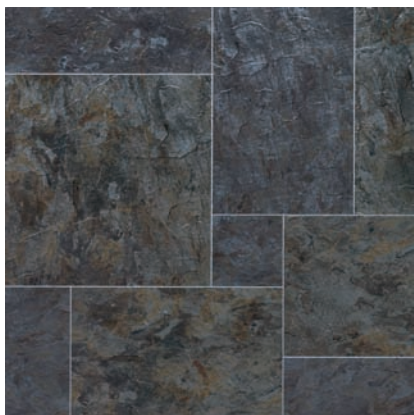


REN33 Montana



REN34 Utah

slate



REN21 Atlantic Slate

NOTE:

These products are supplied as a standard panel of 9 assorted tile sizes complete with a 3mm Design Strip and four 12" tiles. No other design options are available. Please refer to page 7 for example installation diagram.

Specification

Thickness	2.5mm
Wear Layer	0.55mm
Bevelled edge	No
Box quantity	16" x 16" 3.30m ² 20 tiles

Split boxes not available

Retail MRP* inc VAT

£31.99

Chic exc VAT

£17.99

Specification

Thickness	2.5mm
Wear Layer	0.55mm
Bevelled edge	No
Box quantity	REN21 3.71m ² 4 x random panels 4 x 12" x 12" tiles 4 x additional design strips

Split boxes not available

REN21 Retail MRP* inc VAT

£47.99

Chic exc VAT

£26.49

Commercial heavy duty woodplanks

915mm x 102mm [36" x 4"] unless otherwise indicated

woodplank _____



P504 Beechwood



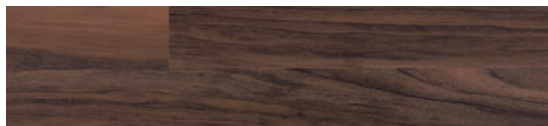
P702 Golden Teak



P707 Honey Beech



CW488 Pitch Pine 915mm x 152mm [36" x 6"]



REN111 Mesquite*



REN112 Hickory Pine



REN114 Pecanwood*

* Please note that as a feature of the design, these products incorporate a high colour variation between individual planks.

Specification

Thickness 2.5mm

Wear layer 0.55mm

Bevelled edge No

Box quantity

36" x 4" 3.34m² 36 planks

36" x 6" 3.34m² 24 planks

Split boxes not available

Retail MRP* inc VAT

£31.99

Chic exc VAT

£17.99

*MRP is manufacturers recommended price, this is our suggested price for sale to the consumer.

Further discounts for 'non residential' commercial projects over 100m² may be available. If granted, this price would be classed as a 'Chic Unique' project price. Please call 01386 820200 to register and obtain more information.

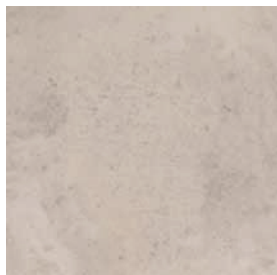
stone 457mm x 457mm [18" x 18"]



SP111 Luna



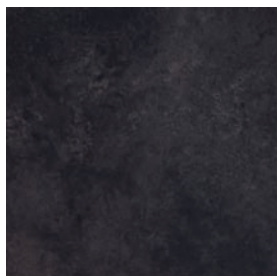
SP112 Solis



SP113 Nimbus

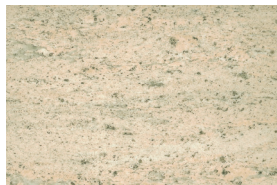


SP114 Ombra



SP115 Nero

stone 457mm x 305mm [18" x 12"]



TT34 Sandstone

Specification

Thickness	2.5mm
Wear layer	0.55mm
Bevelled edge	No
Box quantity	
18" x 18"	3.34m ² 16 tiles
18" x 12"	3.34m ² 24 tiles

Split boxes not available

Retail MRP* inc VAT

£31.49

Chic exc VAT

£17.49

*MRP is manufacturers recommended price, this is our suggested price for sale to the consumer.

Further discounts for 'non residential' commercial projects over 100m² may be available. If granted, this price would be classed as a 'Chic Unique' project price. Please call 01386 820200 to register and obtain more information.

Commercial heavy duty tiles

457mm x 610mm [18" x 24"]

stone



SP211 Mico



SP212 Terra



SP213 Urbus



SP214 Forma



SP215 Ferra

opus

15 year guarantee : residential use

Specification

Thickness	2.5mm
Wear Layer	0.55mm
Bevelled edge	No
Box quantity	
18" x 24"	3.34m ² 12 tiles

Split boxes not available

Retail MRP* inc VAT

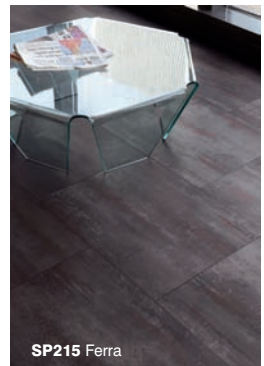
£31.49

Chic exc VAT

£17.49

*MRP is manufacturers recommended price, this is our suggested price for sale to the consumer.

Further discounts for 'non residential' commercial projects over 100m² may be available. If granted, this price would be classed as a 'Chic Unique' project price. Please call 01386 820200 to register and obtain more information.



SP215 Ferra

Commercial heavy duty woodplanks

915mm x 152mm [36" x 6"]

woodplank



WP311 Grano



WP312 Palleo



WP313 Ignea



WP314 Cera



WP315 Aurum

opus

15 year guarantee : residential use

Specification

Thickness 2.5mm

Wear Layer 0.55mm

Bevelled edge No

Box quantity

36" x 6" 3.34m² 24 planks

Split boxes not available

Retail MRP* inc VAT

£31.49

Chic exc VAT

£17.49

*MRP is manufacturers recommended price, this is our suggested price for sale to the consumer.

Further discounts for 'non residential' commercial projects over 100m² may be available. If granted, this price would be classed as a 'Chic Unique' project price. Please call 01386 820200 to register and obtain more information.



WP315 Aurum

Extra Sales Opportunity : Don't forget your Floor Care kit

See P.60 for details 27

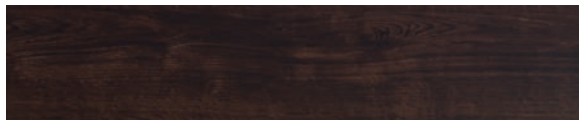
Commercial heavy duty woodplanks

915mm x 152mm [36" x 6"] unless otherwise indicated

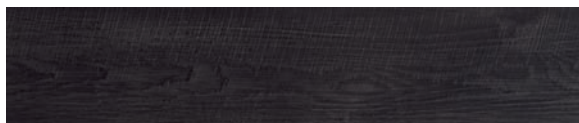
woodplank _____



WP316 Rubra



WP317 Atra



WP318 Carbo

woodplank 915mm x 102mm [36" x 4"] _____



REN113 Weathered Elm*

* Please note that as a feature of the design, these products incorporate a high colour variation between individual planks.

opus

15 year guarantee : residential use

Specification

Thickness 2.5mm

Wear Layer 0.55mm

Bevelled edge No

Box quantity

36" x 6" 3.34m² 24 planks

36" x 4" 3.34m² 36 planks

Split boxes not available

Retail MRP* inc VAT

£31.49

Chic exc VAT

£17.49

*MRP is manufacturers recommended price, this is our suggested price for sale to the consumer.

Further discounts for 'non residential' commercial projects over 100m² may be available. If granted, this price would be classed as a 'Chic Unique' project price. Please call 01386 820200 to register and obtain more information.

Commercial heavy duty woodplanks

1219mm x 228mm [48" x 9"] unless otherwise indicated

woodplank



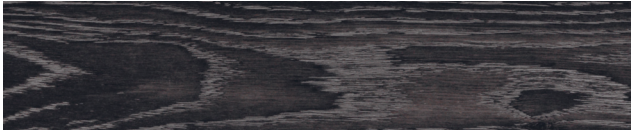
WP411 Niveus



WP412 Primo



WP413 Magna



WP414 Argen



Deluxe and Mini Stands available for the Opus range. For more information call the Customer Service Team on 01386 820200. Alternatively speak to your Retail Business Manager for more in store display options.

opus

15 year guarantee : residential use

Specification

Thickness 2.5mm

Wear Layer 0.55mm

Bevelled edge No

Box quantity

48" x 9" 3.34m² 12 planks

Split boxes not available

Retail MRP* inc VAT

£31.49

Chic exc VAT

£17.49

*MRP is manufacturers recommended price, this is our suggested price for sale to the consumer.

Further discounts for 'non residential' commercial projects over 100m² may be available. If granted, this price would be classed as a 'Chic Unique' project price. Please call 01386 820200 to register and obtain more information.



WP412 Primo

Domestic general duty tiles

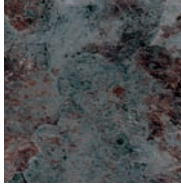
knight-tile

305mm x 305mm [12" x 12"]

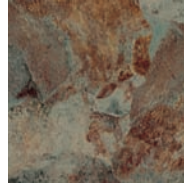


T100 Orkney

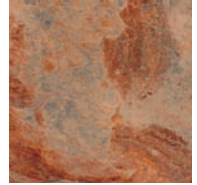
slate



T82 Serpentine



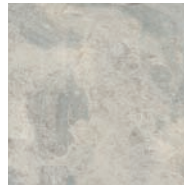
T83 Basalt



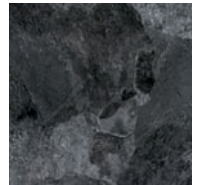
T84 Copper



T86 Dolomite



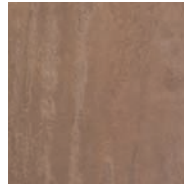
T87 Calcite



T88 Onyx



T89 Andecite



T101 Jura



T102 Ramsey

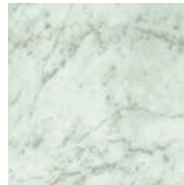


**Deluxe and Mini
Stands available for
the Knight-Tile range.
For more information
call the Customer Service
Team on 01386 820200.
Alternatively speak to
your Retail Business
Manager for more in
store display options.**

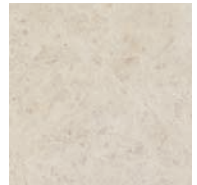
marble



T74 Midnight Black

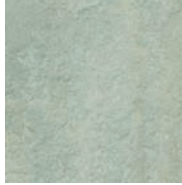
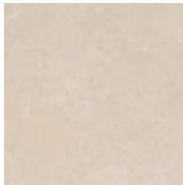
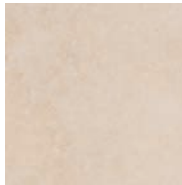
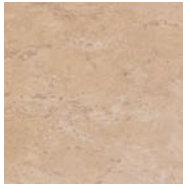


T90 Carrara

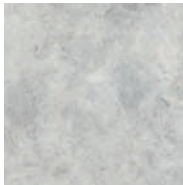


T98 Cara

stone

**ST1** Sandstone**ST3** Aurora**ST4** Medina**ST5** Soapstone**ST8** Balin Stone**ST9** Linton Stone**ST10** Damas Stone**T99** Rona**T100** Orkney

ceramic

**CM1** Sahara**CM2** Arctic

terracotta

**TC48** Fired Clay**Specification**

Thickness	2mm
Wear layer	0.3mm
Bevelled edge	No
Box quantity	
12" x 12"	3.34m ² 36 tiles

Split boxes not available

Retail MRP* inc VAT

£24.49

Chic exc VAT

£13.39

*MRP is manufacturers recommended price, this is our suggested price for sale to the consumer.

Further discounts for 'non residential' commercial projects over 100m² may be available. If granted, this price would be classed as a 'Chic Unique' project price. Please call 01386 820200 to register and obtain more information.

Clip corners and Keysquares**See P.56 for details.**

Domestic general duty woodplanks

knight-tile

915mm x 102mm [36" x 4"] unless otherwise indicated



KP93 Native Koa

woodplank



KP32 Sycamore



KP35 Cedar



KP36 Walnut



KP37 Elm



KP38 Tudor Oak



KP39 Warm Oak



KP40 American Oak



KP45 Pitch Pine



KP51 Arctic Driftwood



KP52 Caribbean Driftwood



KP53 Rustic Ash



Deluxe and Mini Stands available for the Knight-Tile range. For more information call the Customer Service Team on 01386 820200. Alternatively speak to your Retail Business Manager for more in store display options.



KP55 Pear



KP67 Aran Oak*



KP68 Shannon Oak*



KP69 Larne Oak*



KP70 Bray Oak*



KP107 Sienna



KP90 Honey Maple



KP91 Victorian Oak



KP92 Edwardian Oak



KP93 Native Koa

* Please note that as a feature of the design, these products incorporate a high colour variation between individual planks.

Specification

Thickness	2mm
Wear layer	0.3mm
Bevelled edge	No
Box quantity	36" x 4" 3.34m ² 36 planks

Split boxes not available

Retail MRP* inc VAT

£24.49

Chic exc VAT

£13.39

*MRP is manufacturers recommended price, this is our suggested price for sale to the consumer.

Further discounts for 'non residential' commercial projects over 100m² may be available. If granted, this price would be classed as a 'Chic Unique' project price. Please call 01386 820200 to register and obtain more information.

Products which can be used as design components

This table serves as a general guide. There are anomalies to these rules. Contact Karndeans for full details.

		Compatible products					
▼ Main floor		Da Vinci	Michelangelo	Van Gogh	Renoir	Opus	Knight-Tile
artselect	Art Select †	DAVINCI		VAN GOGH			
DAVINCI	Da Vinci *	DAVINCI	MICHELANGELO	VAN GOGH	RENOIR		
MICHELANGELO	Michelangelo		MICHELANGELO		RENOIR	OPUS	
VAN GOGH	Van Gogh	DAVINCI		VAN GOGH			
RENOIR	Renoir		MICHELANGELO		RENOIR	OPUS	
	Opus		MICHELANGELO		RENOIR	OPUS	
KNIGHT-TILE	Knight-Tile						KNIGHT-TILE


* **Please note:** Due to the bevelled edge on Da Vinci, only Renoir and Michelangelo strips and Opus grout strips can be used in between planks. If a Tramlane Border is required, Da Vinci and Van Gogh can be used.

† **Please note:** We recommend the use of design components as a border option only with Art Select Woods.

Design Strips from ranges not featured in the Decorative Strips section are custom options. Please refer to P.39 for details and prices of custom options.

Design components – Design Strips, Borders and Features – can not be cut from the following products:

-  **ST8, ST10, T98, T99, KP67, KP69, KP90, KP91, KP92, KP93**
-  **SP111, SP112, SP113, SP114, SP115, SP211, SP212, SP213, SP214, SP215, TT34, WP311, WP312, WP313, WP314, WP315, WP316, WP317, WP318, WP411, WP412, WP413, WP414, REN113**
-  **MS5**  **REN21, REN111, REN112, REN114, CW488**
-  **VGW50T, VGW51T, VGW52T, VGW53T, VGW54T, VGW70T, VGW71T, VGW76T, VGW80T, VGW81T, VGW82T, VGW83T, VGW84T, VGW85T, VGW86T, VGW87T, VGW88T, VGW89T**
-  **CC07, CC08, LST02, LST03, LST04, RP66, RP67, RP93, RP91**
-  **LM01, LM02, LM03, LM04, GS05, EW01, EW02, EW03, RL01, RL02, RL03, RL04, TB01, HC01, HC02, HC03, HC04, HC05, HC06, AP01, AP02, AP03, AP31**

Design components (other than those specified on  **TC48, KP68** P40–56) can not be cut from the following products:

Karndeans does not guarantee batch match between design components and field materials.

Important Note: Many of the textures and effects common to natural materials are inherent in our products and may appear within design components. We therefore can not accept any returns on the basis of these effects.

Decorative Strips

The Standard Design Strips featured on pages 36–38 are available from stock.

Design Strips cut from products not featured here can be ordered through our **Custom-Made Design Strips and Borders Service** with a standard surcharge £105 per order and a delivery time of within 10 working days.

For more information regarding this service, please speak with your Retail Business Manager or contact the Customer Service Team on **01386 820200**.

All Strips, Borders, Corners and Features should be ordered by completing the order form supplied and faxing back to 01386 761249.

Important note

Many of the textures and effects common to natural materials are inherent in our products and may appear within design components. We therefore can not accept any returns on the basis of these effects.

Design Strips

Design Strips are available in five widths – 3, 5, 10, 30 and 76mm – and are cut from tiles and woodplanks. The following strips are available from stock.

Strips available for use with Van Gogh, Da Vinci and Art Select floors.



† Only suitable for use in Tramline Borders.



SS6 Cotswold



VG6 Lime



RP04 Scandinavian Beech



RP11 American Oak



RP12 Indian Teak



RP13 French Chestnut



VG5 Burnt Ginger



RP41 Australian Walnut



HC06 Midnight Oak *



RL01 Spring Oak **



HC01 Dawn Oak **

* 30mm strip is bevelled.

** Only available as a 30mm bevelled strip.

Strips available for use with Renoir, Michelangelo and Da Vinci floors.



* Due to Da Vinci's bevelled edge, only these strips can be used between planks or tiles.



SS6 Cotswold



REN34 Utah



J86 Gold



P504 Beechwood



MP3 Burnt Ash



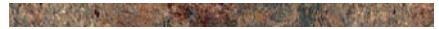
P707 Honey Beech



P702 Golden Teak



P802 Mahogany



J89 Mercury



MLC08 Atomic



HC06 Midnight Oak



MLC07 Comet



MS1 Galician Quartz °



MS2 Navarra Chalk °



MX93 Neopolitan Brick •

Grout Strips

Grout strips are available in six colours at 3mm and 5mm wide.

Strips for use with Da Vinci, Michelangelo, Renoir and Opus floors



AF06 Beige

AF05 Ivory

AF04 Taupe

AF02 Brown

AF07 Chestnut

AF01 Black

Strips available for use with Knight-Tile floors.

Knight-Tile

ST5 Soapstone

ST1 Sandstone

CM1 Sahara

KP32 Sycamore

D504 Beech

KP35 Cedar

ST3 Aurora

KP36 Walnut

KP40 American Oak

KP107 Sienna

KP70 Bray Oak

KP23 Rosewood

T88 Onyx

T100 Orkney

MX93 Neopolitan Brick

° These strips are only available in 10, 30 and 76mm widths.

Widths available



3, 5 & 10mm

x 915mm lengths

Pack quantity 25 lengths

Price per pack

£6.50

30mm

x 915mm lengths

Pack quantity 10 lengths

Price per pack

£8.00

76mm

x 915mm lengths

Pack quantity 10 lengths

Price per pack

£10.50

Custom-Made Design Strips

Surcharge per order

£105.00

Delivery within
10 working days

PLEASE NOTE :

All orders for Custom-Made Design Strips must be confirmed on an order form before they are processed.

All prices listed are exc VAT

Orders of £30.00 or less will incur a delivery charge of £10.00

Metallic Strips

Available in a choice of five widths (3, 5, 10, 30 and 76mm), Metallic Strips are particularly effective the narrower they are. See P:37 for width guide.

Strips for use with Knight-Tile, Renoir, Michelangelo and Da Vinci floors.



* Due to Da Vinci's bevelled edge, these strips can only be used between planks or tiles.



Blue



Copper



Gold



Purple



Silver

Feature strips

Feature strips are available in six colours at 5mm wide.

Strips for use with Knight-Tile, Renoir, Michelangelo and Da Vinci floors.



* Due to Da Vinci's bevelled edge, these strips can only be used between planks or tiles.



Beige



Black



Brown



Gold



Grey



Light Brown

3, 5 & 10mm
x 915mm lengths
Pack quantity 25 lengths
Price per pack
£6.50

30mm x 915mm lengths
Pack quantity 10 lengths
Price per pack
£8.00

76mm x 915mm lengths
Pack quantity 10 lengths
Price per pack
£10.50

5mm x 25 linear metres
Price per pack
£4.65

All prices listed are exc VAT

Decorative Borders

The Standard Decorative Borders featured on pages 40–51 are available from stock.

Decorative Borders cut from products not featured here can be ordered through our **Custom-Made Design Strips and Borders Service** with a standard surcharge £105 per order and a delivery time of within 10 working days.

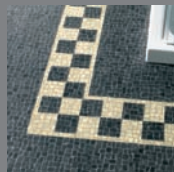
For more information regarding this service, please speak with your Retail Business Manager or contact the Customer Service Team on **01386 820200**.

See pages 52–53 for Custom-Made Standard Border designs and compatibility guidance.

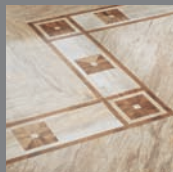
All Strips, Borders, Corners and Features should be ordered by completing the order form supplied and faxing back to 01386 761249.



Da Vinci and Art Select
P40–43 >



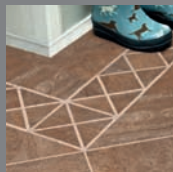
Michelangelo
P44 >



Van Gogh
P45 >



Renoir
P46–47 >



Knight-Tile
P48–51 >

Important note

Many of the textures and effects common to natural materials are inherent in our products and may appear within design components. We therefore can not accept any returns on the basis of these effects.

RL04 Winter Oak



Available borders

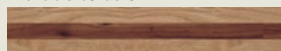


RL04 Tramline - RP41 | RP11 inset

HC05 Evening Oak



Available borders



RL04 Tramline - RP41 | RP11 inset



HC05 Evening Oak

Borders Per 36" length **£5.15**

Standard decorative borders for use with Antique Ceramic floors

CK21 Espresso



Available borders

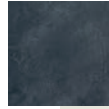


Inca – CK21 | CK22 | CK24 | CK25
| CK26 | SS6



CK21 Cube – CK22 inset

CK25 Noir



Available borders



CK25 Basque – MLC07 inset



Inca – CK21 | CK22 | CK24 | CK25
| CK26 | SS6

CK22 Cappuccino



Available borders



CK22 Basque – SS6 inset

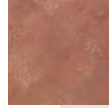


CK22 Cube – CK21 inset



Inca – CK21 | CK22 | CK24 | CK25
| CK26 | SS6

CK26 Java



Available borders

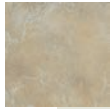


CK26 Block – SS6 inset



Inca – CK21 | CK22 | CK24 | CK25
| CK26 | SS6

CK23 Latte



Available borders



CK23 Basque – SS6 inset

CK24 Mocha



Available borders



Inca – CK21 | CK22 | CK24 | CK25
| CK26 | SS6



CK25 Noir

Borders

Per 36"
length

£8.25

(Each
range)

Corners

Each

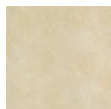
£1.55

(Each
range)

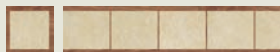
All prices listed are exc VAT

Standard decorative borders for use with Da Vinci floors

CC04 Alabaster



Available borders



CC04 Block - RP12 inset

CC06 Graphite

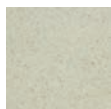


Available borders



CC06 Windsor* - Metallic Silver inset

LST01 Limestone



Available borders

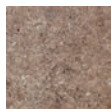


LST01 Keystone - MS1 inset

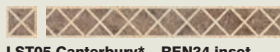


LST01 Tramline - MS1 | J89 inset

LST05 Santi Limestone



Available borders

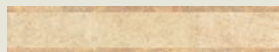


LST05 Canterbury* - REN34 inset

SS6 Cotswold



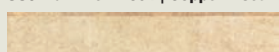
Available borders



SS6 Tramline - J86 inset

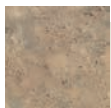


SS6 Tramline - P504 | Copper inset



SS6 Tramline - J86 inset

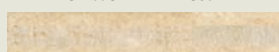
TV72 Natural



Available borders



TV72 Rhombus - RP41 inset



TV72 Tramline - REN34 | SS6 inset



LST01 Limestone


All borders are 36" in length with the exception of Portobello: 32¹/₄" and Canterbury: 34¹/₄"

Borders	Per 36" length	£5.15	*Bevelled £8.25
----------------	----------------	--------------	---------------------------


Corners	Each	£1.05	*Bevelled £1.55
----------------	------	--------------	---------------------------

Standard decorative borders for use with Da Vinci floors


RP11 American Oak




Available borders



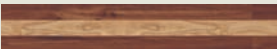
RP11 Bamboo – RP41 inset



Weave* – RP02 | RP11 | RP61




Weave B* – RP12 | RP11 | RP61




RP11 Tramline – RP41 inset

RP51 English Elm




Available borders




RP51 Tramline – VG5 | RP41 inset


RP61 Canadian Maple




Available borders



RP61 Pulse – RP13 inset



Weave* – RP02 | RP11 | RP61



Weave B* – RP12 | RP11 | RP61

RP12 Indian Teak



Available borders




RP12 Pyramid – VG6 inset

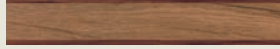


Weave B* – RP12 | RP11 | RP61 inset

RP73 Kenyan Tigerwood




Available borders




RP73 Tramline – RP41 inset

RP41 Australian Walnut




Available borders




RP41 Block – RP04 inset

RP75 Swedish Birch



Available borders



RP75 Tramline – RP12 | RP04 inset

Borders

Per 36"
length

£5.15

*Weave
£8.25

Corners

Each

£1.05

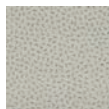
*Weave
£1.55

All prices listed are exc VAT

Standard decorative borders for use with Michelangelo floors

design components

MLC07 Comet



Available borders



MLC07 Tramline – MLC08 inset

MLC08 Atomic



Available borders



MLC08 Block – MLC07 inset



MLC08 Tramline – MLC07 inset

MX97 Venetian Blue



Available borders



MX97 Keystone – MX98 inset

MX98 Adriatic Blue

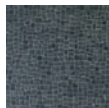


Available borders



MX98 Wave – MX97 inset

MX92 Umbrian Nero



Available borders



MX92 Cube – MX95 inset

MX93 Neopolitan Brick



Available borders



MX93 Diamond – P702 inset

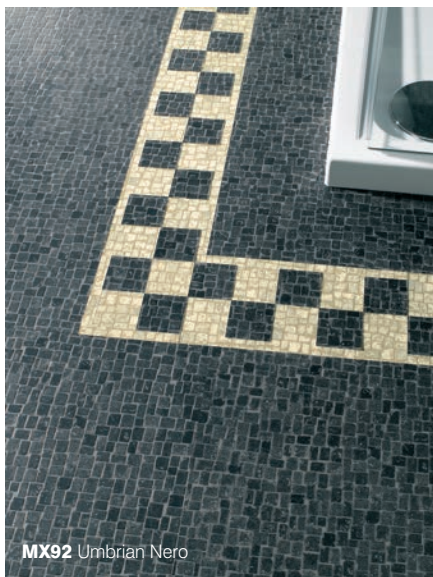
MX95 Ancient Onyx



Available borders



MX95 Rhombus – MX97 inset



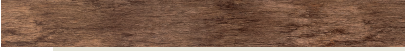
MX92 Umbrian Nero

Borders Per 36" length **£5.15** (Each range)

Corners Each **£1.05** (Each range)

Standard decorative borders for use with Van Gogh floors

VG5-7 Burnt Ginger



Available borders



VG5-7 Pyramid - VG6 inset



Borders

Per 36"
length

£5.15

(Each
range)

Corners

Each

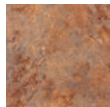
£1.05

(Each
range)

All prices listed are exc VAT

Standard decorative borders for use with Renoir floors

J83 Bronze



Available borders



J83 Block - J86 inset

J84 Copper



Available borders



J84 Diamond - J86 inset

J86 Gold



Available borders

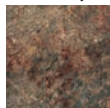


J86 Block - Metallic Silver inset



J86 Keystone - J89 inset

J89 Mercury



Available borders



J89 Pulse - J86 inset

REN32 Nevada



Available borders



REN32 Rope - SS6 inset



REN32 Block - SS6 inset

REN33 Montana



Available borders



REN33 Retro - Metallic Copper inset

REN34 Utah



Available borders



REN34 Retro - REN32 inset

BordersPer 36"
length**£5.15**(Each
range)**Corners**

Each

£1.05(Each
range)*Renoir***P504 Beechwood****Available borders****P504 Pyramid – P702 inset****P702 Golden Teak****Available borders****P702 Leaf – P707 inset****P707 Honey Beech****Available borders****P707 Block – P702 inset****P707 Leaf – P707 inset****M42** Ivory with keysquares

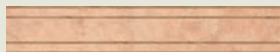
All prices listed are exc VAT

Standard decorative borders for use with Knight-Tile floors

CM1 Sahara



Available borders



CM1 Tramline – KP40 inset



CM1 Tramline – KP36 inset

ST1 Sandstone

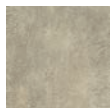


Available borders



ST1 Retro – KP36 inset

ST3 Aurora

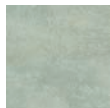


Available borders



ST3 Rhombus – ST1 inset

ST4 Medina

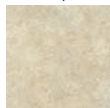


Available borders



ST4 Pulse – ST1 inset

ST5 Soapstone



Available borders



ST5 Block – KP36 inset

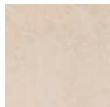


ST5 Portobello – ST3 inset



ST5 Tramline – KP36 inset

ST9 Linton Stone



Available borders



ST9 Canterbury – ST3 inset

ST10 Damas Stone

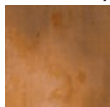


Available borders



ST10 Tramline – ST3 | T100 inset

TC48 Fired Clay



Available borders



TC48 Portobello – ST3 inset

T84 Copper



Available borders



T84 Keystone – T86 inset

T86 Dolomite

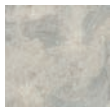


Available borders



T86 Geometric – T88 inset

T87 Calcite



Available borders

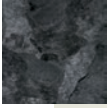
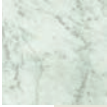
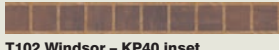


T87 Keystone – T88 inset

All borders are 36" in length with the exception of Portobello: 32 1/4" and Canterbury: 34 1/4"

BordersPer 36"
length**£5.15**(Each
range)**Corners**

Each

£1.05(Each
range)**Knight-Tile****T88 Onyx****Available borders****T88 Windsor - Metallic Silver inset****T88 Tramline - Metallic Silver inset****T90 Carrara****Available borders****T90 Diamond - T74 inset****T100 Orkney****Available borders****T100 Tramline - ST5 inset****T101 Jura****Available borders****T101 Portobello - ST3 inset****T102 Ramsey****Available borders****T102 Windsor - KP40 inset****T102 Ramsey****TC48 Fired Clay**

All prices listed are exc VAT

Standard decorative borders for use with Knight-Tile floors

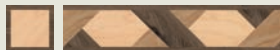
KP32 Sycamore



Available borders



KP32 Greek Key – KP36 inset



KP32 Weave* – KP38 | KP40 inset



KP32 Tramline – KP107 inset

KP35 Cedar



Available borders



KP35 Bamboo – KP23 inset



KP35 Tramline – KP36 inset

KP36 Walnut



Available borders



KP36 Bamboo – KP32 inset



KP36 Windsor – KP38 inset

KP37 Elm



Available borders



KP37 Pulse – KP38 inset

KP38 Tudor Oak



Available borders



KP38 Bamboo – KP40 inset

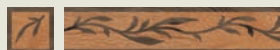
KP39 Warm Oak



Available borders



KP39 Bamboo – KP23 inset



KP39 Bamboo – KP38 inset



KP39 Retro – KP32 inset

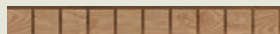
KP40 American Oak



Available borders



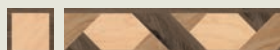
KP40 Bamboo – KP38 inset



KP40 Windsor – KP70 inset



KP40 Rhombus – KP23 inset



KP40 Weave* – KP38 | KP32 |
KP40 inset

Borders

Per 36"
length

£5.15

*Weave
£8.25

Corners

Each

£1.05

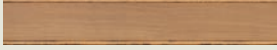
*Weave
£1.55

Knight-Tile

KP55 Pear



Available borders



KP55 Tramline – KP32 | KP107 inset

KP68 Shannon Oak



Available borders



KP68 Block – KP38 inset

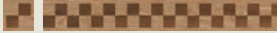
KP70 Bray Oak



Available borders



KP70 Block – D504 inset



KP70 Regent – KP40 inset

KP107 Sienna



Available borders



KP107 Bamboo – KP40 inset



KP107 Leaf – KP40 inset



KP107 Tramline – KP32 inset



KP68 Shannon Oak



KP39 Warm Oak

All prices listed are exc VAT

Custom-made decorative borders

Karndeans Custom-Made Borders Service enables your customer to choose from any of our decorative border designs in their choice of colours. This service attracts a standard surcharge of £105 per order, with a delivery time of within 10 working days.

PLEASE NOTE : All orders for Custom-Made Borders must be confirmed on an order form before they are processed.

Important note

Many of the textures and effects common to natural materials are inherent in our products and may appear within design components. We therefore can not accept any returns on the basis of these effects.

We would recommend customers select contrasting colours when choosing custom-made borders.

Karndeans does not guarantee batch matching between design components and field matches.

Borders	Per 36" length	£5.15
Corners	Each	£1.05
Surcharge	Per order	£105.00



Aztec



Bamboo



Block



Canterbury



Cube



Diamond



Floral

Antique Ceramic custom made borders

Borders	Per 36" length	£8.25
Corners	Each	£1.55
Surcharge	Per order	£105.00



Block



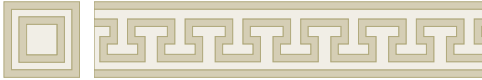
The bevelled Block border can only be used if Da Vinci Antique Ceramic is used for the main floor. Background colours can be chosen from **CK21 CK22, CK23, CK24, CK25, CK26** inset colours can be chosen from any 2.5mm product.

Bevelled Block border is 4" wide.

The borders in this section CAN NOT be used with the **Antique Ceramic** range. Please refer to the Bevelled Custom-made Decorative Border section below for borders available with **Antique Ceramic** products.



Geometric



Greek Key



Keystone



Leaf



Portobello



Pulse



Pyramid



Regent



Retro



Rhombus



Roman Key



Rope



Wave



Windsor

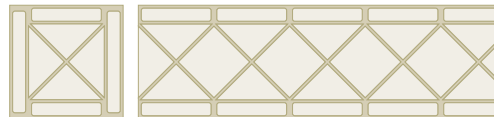


Cube

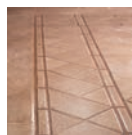


Cube border can only be used if Da Vinci Antique Ceramic is used for the main floor. Background and inset colours can only be chosen from **CK21, CK22, CK23, CK24, CK25, CK26**.

Cube border is 5" wide.



Basque



Basque border can only be used if Da Vinci Antique Ceramic is used for the main floor. Background colours can only be chosen from **CK21, CK22, CK23, CK24, CK25, CK26**. Inset colours can be chosen from any 2.5mm thick product.

Basque border is 6" wide.

All prices listed are exc VAT

Features

Cut to order and tailored to suit your floor. **Delivery within 10 working days**

Available in any combination within each tile or plank collection. (See P32 for details of non-compatible products.)



Cartwheel with border

This example:
KP107 Background
KP39 Inset

36" x 36"
£100.00

If Antique Ceramic is used,
 dimensions are 32" x 32"



Cartwheel

This example:
ST5 Background
ST1 Inset

36" diameter
£100.00

If Antique Ceramic is used,
 diameter is 32"



Celtic

This example:
ST1 Background
T74 T89 Inset

36" diameter
£180.00

If Antique Ceramic is used,
 diameter is 32"

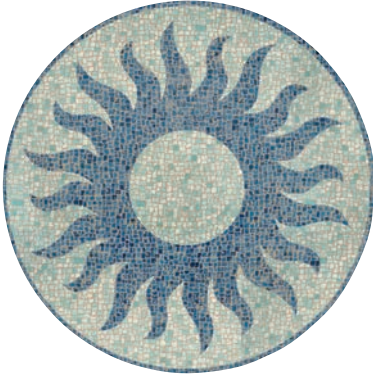


Galaxy

This example:
VG5 Background
RP41 RP61 Inset

36" diameter
£180.00

If Antique Ceramic is used,
 diameter is 32"



Sun **36" diameter**

This example:
MX97 Background
MX98 Inset

£100.00

If Antique Ceramic is used,
diameter is 32"



Dolphin **36" x 24"**

This example:
MX97 Background
MX98 Inset

£140.00

If Antique Ceramic is used,
dimensions are approx. 32" x 21.5"



Star **36" diameter**

This example:
RP11 Background
RP12 RP41 RP61 Inset

£180.00

If Antique Ceramic is used,
diameter is 32"

PLEASE NOTE : All orders for Custom-Made Features must be confirmed on an order form before they are processed. Please use the Features & Strips Order Form provided.

Important note

Many of the textures and effects common to natural materials are inherent in our products and may appear within design components. We therefore can not accept any returns on the basis of these effects.

Karndeans does not guarantee batch matching between design components and field matches.

All prices listed are exc VAT

Solid colours

For use with design components only. Solid colours are available in 3mm thickness only, to use with Da Vinci and Van Gogh products.



V1 Yellow



V5 Green



V6 Red



V7 Blue



V9 Black



V10 White

Woodplank herringbone

Add **£5.00** cutting charge to the square metre price of the range selected.

PLEASE NOTE: Chic Unique Member Discount applies to material price only.

IMPORTANT: If cut from Da Vinci, Herring-bone will only be bevelled on long edges, and on some short edges. The remaining edges will require bevelling.

See P:60-61 for information on bevelling tool.

Clip corners and keysquares



Add **£4.25** to the square metre price of the range selected.

PLEASE NOTE: If cut from Da Vinci, edges will need rebevelling. See P:60-61 for tools.

Karndean adhesives



universal adhesive

A resin-free fibre-reinforced wet-bed high-temperature dispersion adhesive for use indoors. It's easy to apply, has good open time "grab", and reduces residual indentation for all round better results.

5 litre

Approx. coverage **23m²**

£25.50

15 litre

Approx. coverage **70m²**

£67.00



high temperature adhesive

A modified acrylic adhesive with a service temperature of 50°C (our standard acrylic is 40°C). An alternative to Epoxy for areas subject to excessive heat (eg. conservatories or rooms with underfloor heating).

5 litre

Approx. coverage **17m²**

£25.50

15 litre

Approx. coverage **50m²**

£67.00



pressure sensitive adhesive

Suitable for use in normal domestic and, particularly, large scale contract installations, excluding areas subject to excessive temperature and moisture.

2.5 litre

Approx. coverage **10m²**

£12.25

5 litre

Approx. coverage **20m²**

£22.00

15 litre

Approx. coverage **60m²**

£55.00



epoxy adhesive

A two-part adhesive providing an exceptionally strong bond. Recommended for areas subject to excessive moisture (eg shower rooms and temperatures over 50°C.)

4kg unit

Approx. coverage **12m²**

£28.50



acrylic adhesive

Ideal for use in all normal domestic and contract installations, excluding areas subject to excessive temperature and moisture.

6x1 litre

Approx. coverage **6x4m²**

£33.75

2.5 litre

Approx. coverage **10m²**

£12.50

5 litre

Approx. coverage **20m²**

£22.00

15 litre

Approx. coverage **55m²**

£55.50



skim coat

A rapid drying floor finishing compound – designed to be used over wood and cementitious bases.

5kg unit

Approx. coverage **25m²**

£11.75

All prices listed are exc VAT



Versilay

Versilay

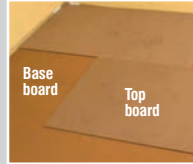
Versilay is a quick and easy floor preparation system that has acoustic and thermal insulation properties. It is a free floating, dual underlay system suitable for domestic and commercial use and provides a superior smooth surface ready to receive new floor coverings.

Product material composition

Top board

4mm board E1 (with interactive adhesive pre-glued backing)

Density 820 kg/m³



Base board

3mm Alum polystyrene backing (foam with vacuum metallised aluminium layer) glued to 3mm board E1 (with interactive adhesive pre-glued top)

Density 820 kg/m³ /EN 323

Aluminium styrene 25kg/m³

- Smooth floors every time – no need to use smoothing compounds
- Quick and easy to fit and remove
- Sound reducing properties to >21 dB ΔLw according to BS-EN-ISO 140-8 / 717-2, DIN 52210

Versilay: the perfect adaptable sub-floor preparation system for all types of projects.

The challenge : You have a new build fast track flooring project with tight deadlines.

The solution : Versilay will give you a fast track acoustic floor finish with the ability to install floor coverings immediately, eliminating the costly drying time period associated with traditional floor preparation methods.

The challenge : Multi occupancy refurbishment where sound reducing acoustic floor finishes have been specified. **The solution :** Installing Versilay in conjunction with your Karndean flooring, will give up to 22 dB impact sound reduction and 58 dB airborne noise reduction.

The challenge : Client wants Karndean installed, but has electric mesh/net type underfloor heating system. **The solution :** Install Versilay directly over the under floor heating system and lay your flooring. Eliminate the need for expensive traditional smoothing compound setting of the mesh heating system and the drying time associated.

The challenge : Client wants new flooring but existing floor is ceramic tiles.

The solution : No need to go through the expensive process of removal. Install Versilay directly over ceramic tiles giving you the perfect surface ready to receive new flooring.

Karndean Versilay

1 pack

4 panels [2.88m²]

£31.65

£10.99 per m²

Tape and sheeting

1 pack

Sheeting [12.5 x 4m] 50m²
Tape 25 linear metres

£39.95

IMPORTANT: Polythene sheeting and aluminium tape must be used in conjunction with Versilay. For more information and a free sample call the Customer Service Team on 01386 820200 or email info@karndean.co.uk

Cleaning and maintenance

Floor protection made simple

Due to Karndean's enhanced PU technology surface protection, we have eliminated the need for initial sealing. Karndean floors are now more resistant to scuff marks, stains and fine scratches, resulting in an easier, and more environmentally friendly clean.

Key Benefits

- No need for initial sealing – Refresh (formerly Dim Glow) is not required post installation
- Lower maintenance requirements
- More environmentally friendly
- Time and cost saving – no stripping and sealing



HC01 Dawn Oak

Cleaning and maintenance system – Floor Care Kits

cleaning and maintenance



Each Floor Care Kit contains:

750ml Basic Stripper	1 x White pad (for use with Basic Stripper)
750ml Refresh Floor Protector	1 x White pad (for use with Refresh)
750ml Routine Cleaner	1 x Set of furniture protectors
1 x Applicator	Instruction leaflet

You have a sales opportunity with each customer when they order a floor. Do they want a Floor Care Kit? There is no minimum order charge incurred when purchasing with main order.

£21.99 each

Single orders of six packs or more attract a 10% discount.

Cleaning and maintenance system – domestic applications



Stage 1	Kardean Basic Stripper	
	6 x 750ml	Approx. coverage 40m²
£18.49		

Stage 2	Kardean Refresh	
	6 x 750ml	Approx. coverage 15m²
£30.99		

Stage 3	Kardean Routine Cleaner	
	6 x 750ml	Approx. coverage 150m²
£18.49		



Stage 1	Kardean Basic Stripper	
	2 litre	Approx. coverage 100m²
£5.19		

Supplied as individual unit
Purchases of packs of five attract a 10% discount.

Stage 2	Kardean Refresh	
	2 litre	Approx. coverage 40m²
£14.49		

Supplied as individual unit
Purchases of packs of five attract a 10% discount.

Stage 3	Kardean Routine Cleaner	
	2 litre	Approx. coverage 500m²
£5.19		

Supplied as individual unit
Purchases of packs of five attract a 10% discount.

Cleaning and maintenance system – contract applications



Stage 1	Kardean Basic Stripper	
	5 litre	Approx. coverage 250m²
£10.29		

Supplied as individual units

Stage 2	Kardean Refresh Hard Sealer *	
	5 litre	Approx. coverage 90m²
£27.99		

Supplied as individual units

Stage 3	Kardean Routine Cleaner	
	5 litre	Approx. coverage 1250m²
£10.29		

Supplied as individual units

***PLEASE NOTE:** This product is for commercial/contract applications only and will require an industrial stripper to remove from flooring.

All prices listed are exc VAT

Karndeans tools

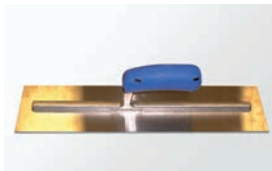
To help you get the job done, we have introduced a range of Karndeans tools. Below is a selection



Code: MIX DRILL

Mixing Drill

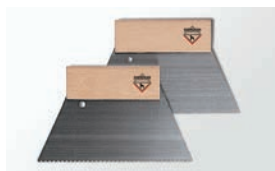
£245.00



Code: SGSCREEDTRWL

Soft Grip Screeding Trowel

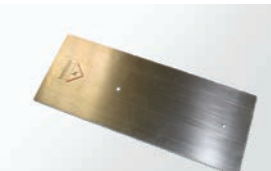
£24.00



Code: A2 ADHESIVE-SPREADER

A2 Adhesive Spreader

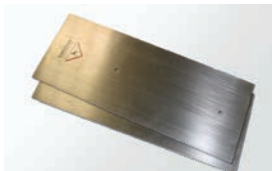
£1.50



Code: TROWELPSA2

A2 Trowel Blade

£3.30



Code: FNTROWELBLD

Fine Notch Trowel Blades [Pack of 2]

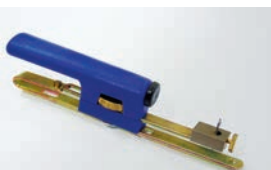
£8.25



Code: TROWELHAND

Adhesive Trowel Handle

£4.75



Code: COMBI-SCRIB

Combi Scriber

£30.75



Code: COMBIBAR-SCRIB

Combi Bar Scriber

£34.00



Code: STAIRSCRIB

Stair Scribers

£22.00



Code: TILE CUTTER 24"

Heavy Duty Tile Cutter [24"]

£625.00



Code: GUILLOTARM

Guillotine Arm

£125.00



Code: BEVELEDGETRIM

Bevelled Edge Trimmer

£57.00



Code: MITRESHEARS

Mitre Shears

£28.00



Code: FEINMMSTART

Fein Multi-master Start Kit
[Includes E-cut Blade]

£150.00



Code: PROMEISTER

Profilmeister

£61.50

of our most popular items. Call the Customer Service Team on 01386 820200 for full details.



Code: RED KNIFE

Red Knife **£10.25**



Code: DOLPHIN-KNIFE

Dolphin Knife **£10.25**



Code: GREEN KNIFE

Green Knife with 20 Blades **£12.75**



Code: GRNBLADES-HEAVY

Green Box Blades **£9.25**



Code: WALL/FLOOR ROLLER

Extendable Floor Roller **£25.75**



Code: MULTI-ROLLER

Multi Hand Roller **£36.00**



Code: PIN-LEVELLER

Pin Leveller with Handle **£51.50**



Code: 10" AERATION ROLLER/18AERATROLL

Aeration (Spike) Roller 10" **£28.75**
Comes with handle & cover 18" **£37.25**



Code: PIN VICE

Pin Vice **£5.90**



Code: SCRAPER

30cm Scraper **£7.25**



Code: DIVIDERS

Dividers **£29.50**



Code: 2MSTRAIGHTEDGE

2m Straight Edge **£10.00**



Code: TAPE MEASURE

Tape Measure **£5.25**



Karndean holdall for use with tools or clothes
Accessories not included



Code: KARNHOLDALL

£30.75

All prices listed are exc VAT

Karndean Project Registration

Need a preferential price for a commercial installation over 100m²?

Call Karndean Sales Team on **01386 820200** to enquire about possible discounts and project registration.

Once registered you will receive confirmation of your exclusive project registration.

No other retailer will be able to register the project with Karndean.
It is strictly on a first come first served basis.

chic project price registrations apply to individual contract installation orders over 100m².

Please contact the Customer Service Team on **01386 820200** for further information.

Please note: The Karndean Sales Force works to create specifications for you to tender. These are Karndean-generated specifications and are outside the **chicunique** Club system.

Training Courses

Kardean training courses are an industry recognised training programme teaching fitting techniques. Our renowned and friendly courses ensure you have an enjoyable way to develop your skills and meet new contacts within the industry.

Fitter training days

Competitively priced, our courses are of value to any fitter or retailer of Kardean products, and include a free tool kit and Kardean holdall worth £155.

Basic Course

£350.00 exc VAT

Advanced Course

£450.00 exc VAT

Product training days

Our Product Training sessions are designed to enhance sales skills and boost customer confidence in our products. The sessions take place at our Evesham Showroom and cover all aspects from a simple refresh to a more in-depth session, designed to really enhance your sales ability

Best of all our Product Training sessions are free of charge to our Retail Partners.

For more information or to reserve a place, please contact our training line on 01386 820170.



Cube

Quantity Borders Quantity Corners

Background Product no.

Inset Product no.

Diamond

Quantity Borders Quantity Corners

Background Product no.

Inset Product no.

Floral

Quantity Borders Quantity Corners

Background Product no.

Inset Product no.

Geometric

Quantity Borders Quantity Corners

Background Product no.

Inset Product no.

Greek Key

Quantity Borders Quantity Corners

Background Product no.

Inset Product no.

Inca

Quantity Borders Quantity Corners

Inca – CK21 CK22 CK24 CK25 CK26 S36

Keystone

Quantity Borders Quantity Corners

Background Product no.

Inset Product no.

Retro

Quantity Borders Quantity Corners

Background Product no.

Inset Product no.

Rhombus

Quantity Borders Quantity Corners

Background Product no.

Inset Product no.

Roman Key

Quantity Borders Quantity Corners

Background Product no.

Inset Product no.

Rope

Quantity Borders Quantity Corners

Background Product no.

Inset Product no.

Wave

Quantity Borders Quantity Corners

Background Product no.

Inset Product no.

Weave

Quantity Borders Quantity Corners

Knight-Tile Weave Da Vinci Weave

Da Vinci Weave B

Windsor

Quantity Borders

Background Product no.

Inset Product no.

Balance of order (Please list)

Don't forget to order your Karndean Adhesive and Cleaning and Maintenance Products.

Standard decorative borders are available in a variety of colours listed on P37-49.

Where possible all borders are 36" long.

Background – Same colour to match main floor area.

Inset – To be a contrasting colour to main floor area.

All Da Vinci borders – 3" width.

All Knight-Tile, Renoir, Michelangelo, and Van Gogh borders – 4" width.

EXCEPTIONS – **Inca** : Standard 4" width.

Bevelled Block : Standard 4" width. **Basque** : Standard 6" width.


Regent : approx. 2" width. **Canterbury** : 2" width. **Windsor** : 2" width.

T90/T74 Diamond and J84/J86 Diamond : Available from stock – 3" standard width.

PLEASE NOTE : Custom-made decorative borders will attract a standard surcharge of £1,055.00 per order, with a delivery time of up to 10 working days. Custom-made orders are non-returnable. (See P37-51 for details of standard and custom-made decorative borders and P32 for compatibility of products.)

Account number	<input type="text"/>
Account name	<input type="text"/>
Contact name	<input type="text"/>
Telephone number	<input type="text"/>
Order number	<input type="text"/>
Date ordered	<input type="text"/>
Custom Order	<input type="checkbox"/> Yes <input type="checkbox"/> No
Please allow 10 working days for custom orders.	
Date required	<input type="text"/>


Aztec

	<input type="checkbox"/>	Quantity Borders	<input type="text"/>	Quantity Corners	<input type="text"/>
<input type="checkbox"/>	Background Product no.	<input type="text"/>	<input type="checkbox"/>	Inset Product no.	<input type="text"/>


Bamboo

	<input type="checkbox"/>	Quantity Borders	<input type="text"/>	Quantity Corners	<input type="text"/>
<input type="checkbox"/>	Background Product no.	<input type="text"/>	<input type="checkbox"/>	Inset Product no.	<input type="text"/>


Basque

	<input type="checkbox"/>	Quantity Borders	<input type="text"/>	Quantity Corners	<input type="text"/>
<input type="checkbox"/>	Background Product no.	<input type="text"/>	<input type="checkbox"/>	Inset Product no.	<input type="text"/>

Block

	<input type="checkbox"/>	Quantity Borders	<input type="text"/>	Quantity Corners	<input type="text"/>
<input type="checkbox"/>	Background Product no.	<input type="text"/>	<input type="checkbox"/>	Inset Product no.	<input type="text"/>

Canterbury

	<input type="checkbox"/>	Quantity Borders	<input type="text"/>	Quantity Corners	<input type="text"/>
<input type="checkbox"/>	Background Product no.	<input type="text"/>	<input type="checkbox"/>	Inset Product no.	<input type="text"/>

Leaf

	<input type="checkbox"/>	Quantity Borders	<input type="text"/>	Quantity Corners	<input type="text"/>
<input type="checkbox"/>	Background Product no.	<input type="text"/>	<input type="checkbox"/>	Inset Product no.	<input type="text"/>

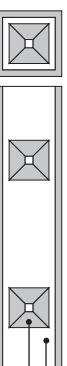
Portobello

	<input type="checkbox"/>	Quantity Borders	<input type="text"/>	Quantity Corners	<input type="text"/>
<input type="checkbox"/>	Background Product no.	<input type="text"/>	<input type="checkbox"/>	Inset Product no.	<input type="text"/>

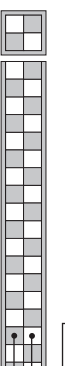
Pulse

	<input type="checkbox"/>	Quantity Borders	<input type="text"/>	Quantity Corners	<input type="text"/>
<input type="checkbox"/>	Background Product no.	<input type="text"/>	<input type="checkbox"/>	Inset Product no.	<input type="text"/>

Pyramid

	<input type="checkbox"/>	Quantity Borders	<input type="text"/>	Quantity Corners	<input type="text"/>
<input type="checkbox"/>	Background Product no.	<input type="text"/>	<input type="checkbox"/>	Inset Product no.	<input type="text"/>

Regent

	<input type="checkbox"/>	Quantity Borders	<input type="text"/>	Quantity Corners	<input type="text"/>
<input type="checkbox"/>	Background Product no.	<input type="text"/>	<input type="checkbox"/>	Inset Product no.	<input type="text"/>

new order form – features & strips

Account number

Account name

Contact name

Telephone number

Order number

Date ordered

Date required

Custom Order Yes No Please allow 10 working days for custom orders.

PLEASE NOTE :

Features are available in any colour combination within each range, apart from those listed on P.32. All features will be delivered within 10 days unless otherwise noted.

Custom-made design strips will attract a standard surcharge of £105.00 per order, with a delivery time of up to 10 working days. Custom-made orders are non-returnable. (See P.32–35 for details of standard and custom-made design strips.)

PLEASE PHOTOCOPY AND USE AS AN ORDER FORM.

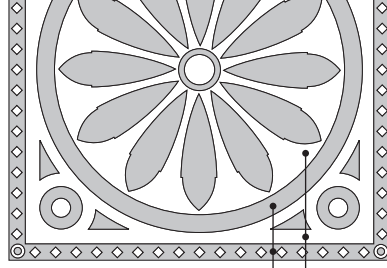
Cartwheel with border

36" x 36"

If Antique Ceramic is used, diameter is 32"

Product numbers

A	<input type="text"/>
B	<input type="text"/>



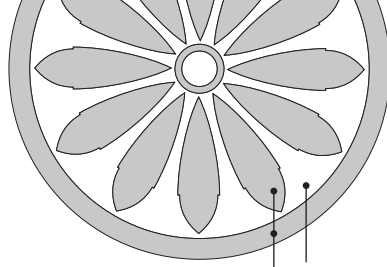
Cartwheel

36" diameter

If Antique Ceramic is used, diameter is 32"

Product numbers

A	<input type="text"/>
B	<input type="text"/>



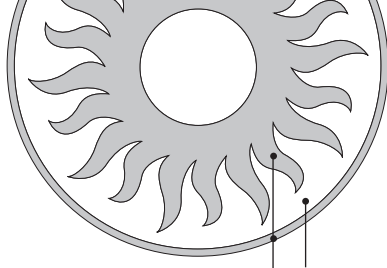
Sun

36" diameter

If Antique Ceramic is used, diameter is 32"

Product numbers

A	<input type="text"/>
B	<input type="text"/>



Dolphin

36" x 24"

If Antique Ceramic is used, dimensions are approx. 32" x 21.5"

Product numbers

A	<input type="text"/>	B	<input type="text"/>
---	----------------------	---	----------------------

Celtic

36" diameter

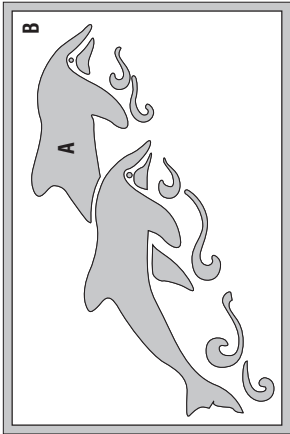
If Antique Ceramic is used,

Galaxy

36" diameter

If Antique Ceramic is used,





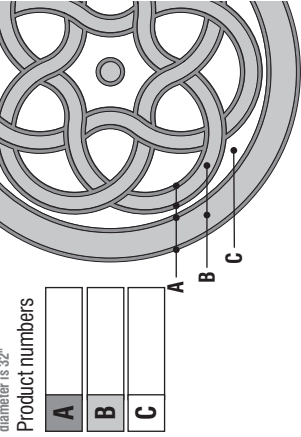
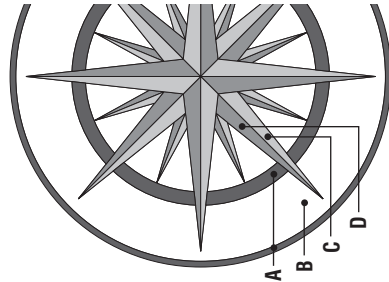
Star

36" diameter

If Antique Ceramic is used,
diameter is 32"

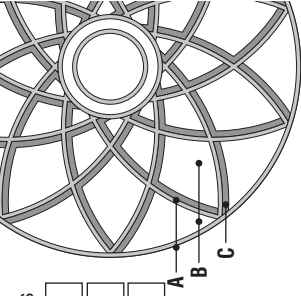
Product numbers

A	<input type="text"/>
B	<input type="text"/>
C	<input type="text"/>
D	<input type="text"/>



Product numbers

A	<input type="text"/>
B	<input type="text"/>
C	<input type="text"/>



Product numbers

A	<input type="text"/>
B	<input type="text"/>
C	<input type="text"/>

Decorative strips

3mm	Colour	<input type="text"/>	Packs required	<input type="text"/>	25	lengths	per pack
5mm	Colour	<input type="text"/>	Packs required	<input type="text"/>	25	lengths	per pack
10mm	Colour	<input type="text"/>	Packs required	<input type="text"/>	25	lengths	per pack
30mm	Colour	<input type="text"/>	Packs required	<input type="text"/>	10	lengths	per pack
76mm	Colour	<input type="text"/>	Packs required	<input type="text"/>	10	lengths	per pack

Balance of order (Please list)

Don't forget to order your Karndean Adhesive and Cleaning and Maintenance Products.

Karndean Designflooring

Crab Apple Way, Vale Park, Evesham, Worcestershire WR11 1GP

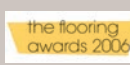
Customer Service Team	Customer Finance
Telephone 01386 820200	Telephone 01386 820101
Fax 01386 761249	Fax 01386 820199
Email sales@karndean.co.uk	Email customerfinance@karndean.co.uk

Commercial Sales	Technical Services
Telephone 01386 820104	Telephone 01386 820102
Fax 01386 820183	Fax 01386 820196
Email commercial@karndean.co.uk	Email technical@karndean.co.uk

Samples Hotline	Training Centre
Telephone 01386 820100	Telephone 01386 820170
Fax 01386 761249	Fax 01386 820198
Email info@karndean.co.uk	Email training@karndean.co.uk

Sales office opening hours	Showroom opening hours
Mon - Fri 08.00 - 18.00	Mon - Sat 09.00 - 17.00
Sat 09.00 - 14.00	Sun and Bank holidays 10.00 - 16.00
- this applies to Trade Sales, Commercial Sales and the Samples Hotline.	

Calls may be recorded for quality and training purposes.



Sample swatches have been cut from an overall design, therefore decoration and shade may vary. The random nature of wood and other natural materials, from which our designs are taken, means that significant colour and design variation is normal and indeed enhances the natural look of Karndean products.

The policy of the company is of one of continuous development and improvement. We reserve the right add or delete from the range or to change patterns without prior notification.

Whilst every care has been taken in the printing of this brochure, the colours shown are only as accurate as printing processes will allow.

All sales of our products are subject to our customer contractual terms, supplied on request.

We reserve all rights in our intellectual property © Karndean Designflooring and the Karndean Designflooring logo are trademarks of Karndean International Ltd.

