

Couloirs & Escaliers  Les

The Stair Runner Collection

**louis de
poortere** 





SAN LORENZO

Timeless stair runner Collection

DESIGN

stair runner collection

Exclusive **triple shot** quality
Extra **durability**
Woven selvedge
Modern classical appeal

14 wilton qualities
Solid / design / stripes
Cut / Loop constructions
Modern classical appeal

Royal aubusson
Hamilton
Glasgow
Classic
Royal
Antic washed
Damask
William Morris
Palazzo
Karadja
Bocchara
Feraghan
Kilim
Hadschlu
Feraghan Mir
Persian
Secret garden

Color Full
Color Touch
Color Loop
Color.Net
Move Move
border
Richelieu
Classic
Richelieu
Escalier
Cordal Missouri
Beach Jazz
Elite Elite
flammé
Elite flammé
border



Les

Couloirs & Escaliers

SAN LORENZO (*San Lorenzo*)

The new stair runner collection

Exclusive triple shot quality

Extra durability

Woven selvedge

Modern classical appeal

**louis de
poortere** 



Royal Aubusson 15503 / 45500



Royal Aubusson 15503 / 49500



Royal Aubusson 15503 / 45000



Royal aubusson

27" 36"
70 90

Technicals

Manufacturing process *Wilton*

3 shots Pile yarn composition

80% Wool 20%PA

Total height $\pm 9,6mm$

10.38" Pile height $\pm 7,6mm$

10.30" Width *70cm - 90cm*

Number of tufts ± 222.312

Total weight $\pm 3150g/m^2$

Pile weight $\pm 2200g/m^2$

Recommended installation

method *Stretched on underlay*



HAMILTON 15514 / 49500



HAMILTON 15514 / 45500



Hamilton

San Lorenzo



GLASGOW 15517 / 45000



GLASGOW 15517 / 49504



GLASGOW 15517 / 47001



Classic



CLASSIC 15520 / 42500



CLASSIC 15520 / 45500



CLASSIC 15520 / 49002

27" 36"
70 90

asgow

Technicals

Manufacturing process *Wilton*

3 shots Pile yarn composition

80% Wool 20%PA

Total height $\pm 9,6mm$

10.38" Pile height $\pm 7,6mm$

10.30" Width *70cm - 90cm*

Number of tufts ± 222.312

Total weight $\pm 3150g/m^2$

Pile weight $\pm 2200g/m^2$

Recommended installation
method *Stretched on underlay*



ROYAL 15495 / 45502



CLASSIC 15520 / 49500



ROYAL 15495 / 49501

San Lorenzo



Antic Washed 15510 / 45005



Antic Washed 15510 / 45007



Antic Washed 15510 / 49003



Antic Washed 15510 / 49003 / internal vue



DAMASK 15497 / 47001



DAMASK 15497 / 49000



DAMASK 15497 / 45500

Technicals

Manufacturing process *Wilton*

3 shots Pile yarn composition

80% Wool 20%PA

Total height $\pm 9,6mm$

10.38" Pile height $\pm 7,6mm$

10.30" Width *70cm - 90cm*

Number of tufts ± 222.312

Total weight $\pm 3150g/m^2$

Pile weight $\pm 2200g/m^2$

Recommended installation

method *Stretched on underlay*



Garden Washed 15506 / 45004

Garden Washed



PALAZZO 15516 / 45001



BOCCHARA 15499 / 45002



BOCCHARA 15499 / 49500



Karadja

KARADJA 15496 / 45003 / internal vue



KILIM 15501 / 45003



HADSCHLU 15507 / 45002



KARADJA 15496 / 45003

27" | 36"
70 | 90

Technicals

Manufacturing process *Wilton*

3 shots Pile yarn composition

80% Wool 20%PA

Total height $\pm 9,6mm$

10.38" Pile height $\pm 7,6mm$

10.30" Width *70cm - 90cm*

Number of tufts ± 222.312

Total weight $\pm 3150g/m^2$

Pile weight $\pm 2200g/m^2$

Recommended installation
method *Stretched on underlay*



FERAGHAN 15513 / 55006



FERAGHAN 15513 / 52500



Feraghan

FERAGHAN 15513 / 52500 / internal vue



MIR 15508 / 52500



MIR 15508 / 55006



PERSIAN 15518 / 45500



PERSIAN 15518 / 49500



W.MORRIS 15522 / 49501



Secret Garden 15519 / 49001



Secret Garden 15519 / 49502



Secret Garden 15519 / 49503

| 27" | 36" |
| 70 | 90 |



Persian



William morris



Technicals

Manufacturing process *Wilton*

3 shots Pile yarn composition

80% Wool 20%PA

Total height $\pm 9,6\text{mm}$

10.38" Pile height $\pm 7,6\text{mm}$

10.30" Width *70cm - 90cm*

Number of tufts $\pm 222\ 312$

Total weight $\pm 5150\text{g/m}^2$

Pile weight $\pm 2200\text{g/m}^2$

Recommended installation
method *Stretched on underlay*

Secret Garden



Les
Couloirs & Escaliers

DESIGN

The new stair runner collection





Color Full 2008 / 51



Color Full 2008 / 56

27"
70

Color Full

Technicals

Manufacturing process *wilton* Backing *cotton/ jute* Pile yarn composition *wool* Total height $\pm 8mm$ Pile height $\pm 6mm$ Total weight $\pm 2140g/m^2$ Total pile weight $\pm 1240g/m^2$ Number of tufts $\pm 111.000 \times 2$ Width *70cm* Number of colors *5* Fire resistance *Bfl* Light fastness *min 4* Rubbing fastness *min 4* Use *23,32* Recommended installation method *stretched on underlay*

DESIGN



Color Full 2008 / 77



Color Full 2008 / 15



Color Full 2008 / 72



| 28" - 29" |
| 71 - 74 |

Color Touch 5000 / 3912

Color touch

Technicals

Manufacturing process *Wilton* Backing *Wool*
Pile yarn composition *Wool* Total height $\pm 4\text{mm}$
Total weight $\pm 1900\text{g/m}^2$
Total pile weight $\pm 1500\text{g/m}^2$ Width $\pm 71-74\text{cm}$
Number of colors *4* Fire resistance *Bfl*
Light fastness *min 4* Rubbing fastness *min 4*
Use *23,32*, stairs *22* Recommended installation
method *glued*



Color Touch 7000 / 1001



Color Touch 5500 / 5505



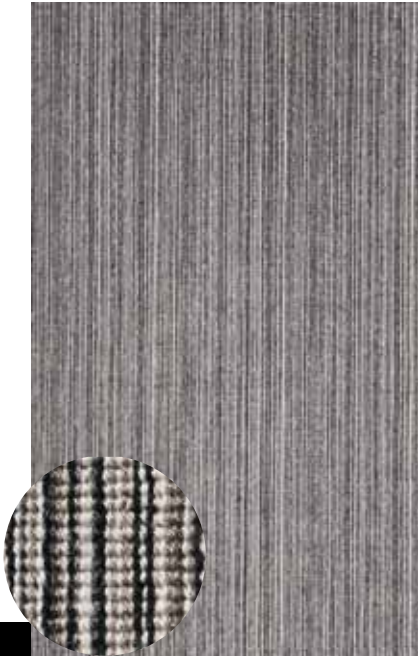
Color Touch 1500 / 1502

Color Loop

Technicals

Manufacturing process *Wilton-Three shots* Backing *Jute/cotton*
 Pile yarn composition *Wool* Total height $\pm 5,4\text{mm}$ Pile height
 $\pm 3,4\text{mm}$ Total weight 1915g/m^2 Total pile weight $\pm 775\text{g/m}^2$
 Number of tufts $\pm 111.000 \times 2$ Width 70cm
 Number of colors 4 Fire resistance *Bfl*
 Light fastness *min 4* Rubbing fastness *min 4*
 Use: *22+,31* Recommended installation
 method *Stretched on underlay*

27"
70



Color Loop 2006 / 15



DESIGN



Color Loop 2006 / 51



Color Loop 2006 / 72



Color Loop 2006 / 56



Color .Net 6830



Color .Net 6850



Color .Net 6851

26"	35"	52"
66	88	132

Color.Net

Technicals

Manufacturing process *Wilton* Backing *Jute*
 Pile yarn composition *Wool* Total height $\pm 5mm$ Pile height $\pm 3mm$
 Total weight $\pm 2445g/m^2$ Total pile weight $\pm 1225g/m^2$
 Number of tufts $\pm 36.750 \times 2$
 Width *66 - 88 - 132 cm* Number of colors *6* Fire resistance *Bfl*
 Light fastness *min 4* Rubbing fastness *min 4*
 Use *23* , *32* , stairs *21* Recommended installation method *Stretched on underlay*



Color .Net 6853



Color .Net 6880



Color .Net 6890



Move 2006 / 73



Move 2006 / 15



Move 2006 / 16



Move 2006 / 51



Move 2006 / 56



Move 2006 / 71



Move 2006 / 75



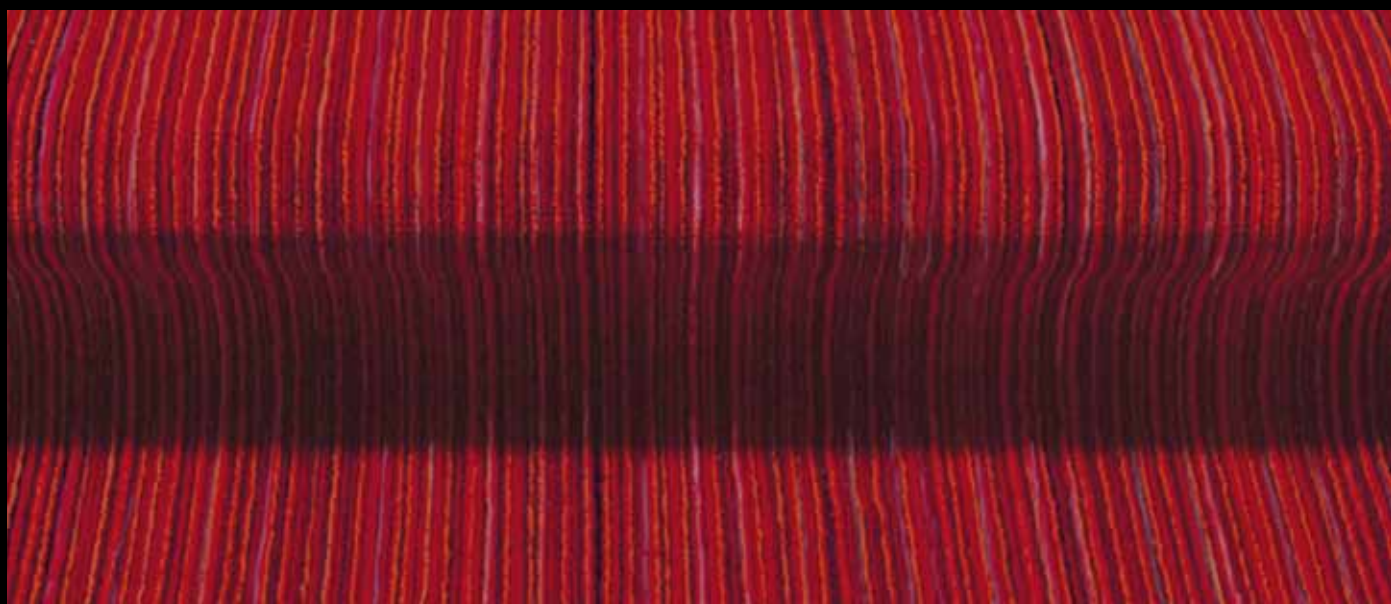
Move 2010 / 90



Move 2006 / 52

DESIGN





Move

27"
70

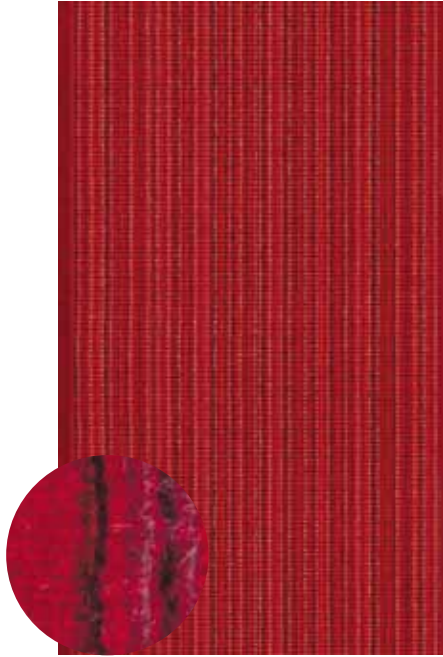
Technicals

Manufacturing process *Wilton* Backing *Jute cotton* Pile yarn composition *80% Wool 20%PA*
 Total height *±8,4mm* Pile height *±6,4mm* Total weight *±2280g/m2* Total pile weight *±1250g/m2*
 Number of tufts *±111.000 x2* Width *70cm*
 Number of colors *9* Fire resistance *Bfl*
 Light fastness *min 4* Rubbing fastness *min 4*
 Use *23 , 32* Recommended installation method *Stretched on underlay*





Move border 2007 / 51



Move border 2007 / 56



Move border 2007 / 71



Move border 2007 / 75



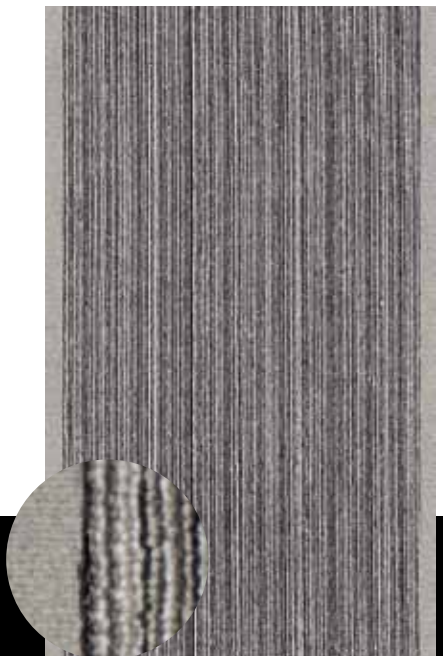
Move border 2007 / 90



Move border 2007 / 52



Move border 2007 / 73



Move border 2007 / 15



Move border 2007 / 16

DESIGN



Technicals

Manufacturing process *Wilton* Backing *Jute / cotton* Pile yarn composition: *80% Wool 20%PA*
Total height $\pm 8,4\text{mm}$ Pile height $\pm 6,4\text{mm}$ Total weight $\pm 2280\text{g/m}^2$ Total pile weight $\pm 1250\text{g/m}^2$
Number of tufts $\pm 111.000 \times 2$ Width *70cm*
Number of colors *9* Fire resistance *Bfl*
Light fastness *min 4* Rubbing fastness *min 4*
Use *23, 32* Recommended installation method *Stretched on underlay*



MOVE border



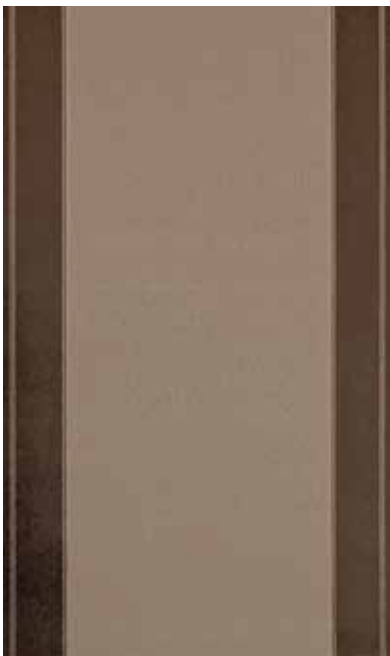
| 27" |
| 70 |



Richelieu Classic 2011/71

Technicals

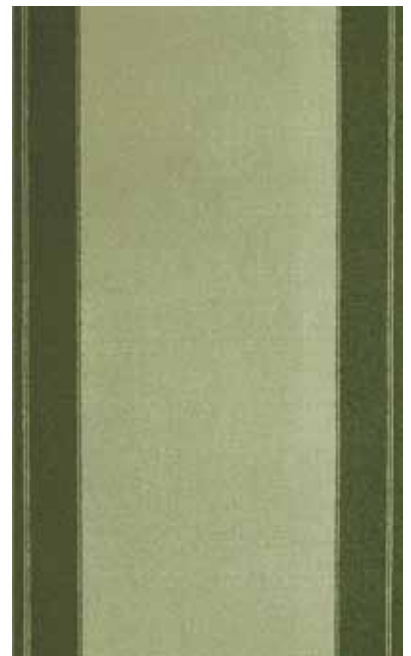
Manufacturing process *Wilton* Backing *Cotton/ polyester* Pile yarn composition *80%Wool20%PA*
 Total height $\pm 8 \text{ mm}$ Pile height $\pm 6 \text{ mm}$ Total weight $\pm 2265 \text{ g/m}^2$ Total pile weight $\pm 1250 \text{ g/m}^2$
 Number of tufts $\pm 122.100 \times 2$ Width *60cm - 70cm - 90cm* Number of colors *7* Fire resistance *Bfl* Light fastness *min 4* Rubbing fastness *min 4* Use *23 , 32* Recommended installation method *Stretched on underlay*



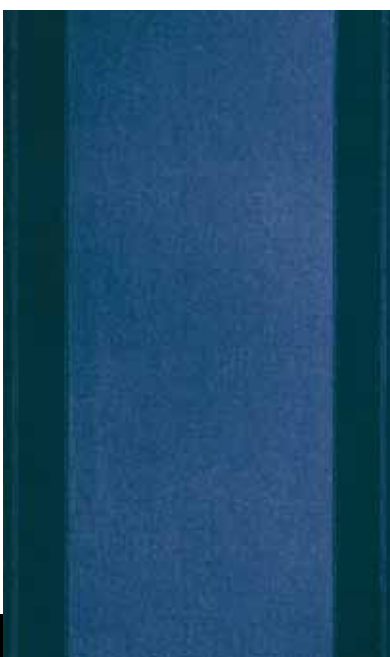
Richelieu Classic 2011/11



Richelieu Classic 2011/90



Richelieu Classic 2011/30



Richelieu Classic 2011 / 20



Richelieu Classic 2011 / 50



Richelieu Classic 2011 / 10

DESIGN



24"	27"	36"
60	70	90

Richelieu

Classic





Richelieu Escalier 2501



Richelieu Escalier 5505



Richelieu Escalier 9802



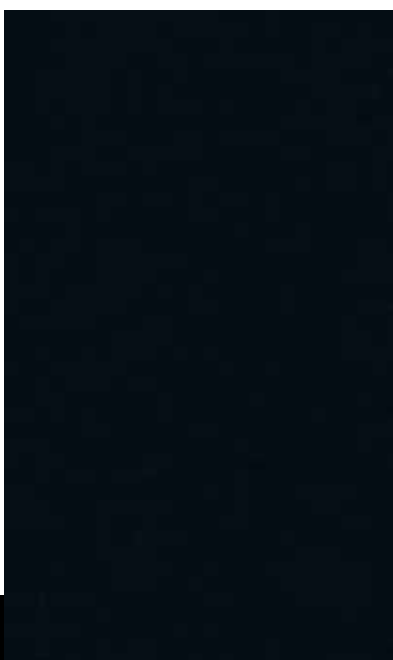
Richelieu Escalier 2001



Richelieu Escalier 1502



Richelieu Escalier 1002



Richelieu Escalier 9219



Richelieu Escalier 7501



Richelieu Escalier 3004



Richelieu Escalier 1001



Richelieu Escalier 5502



Richelieu Escalier 3500

Richelieu Escalier

Technicals

Manufacturing process *Wilton* Backing *Cotton/ polyester* Pile yarn composition *80%Wool20%PA*
 Total height $\pm 8\text{ mm}$ Pile height $\pm 6\text{ mm}$ Total weight $\pm 2265\text{g/m}^2$ Total pile weight $\pm 1250\text{g/m}^2$
 Number of tufts $\pm 12.100 \times 2$ Width *60cm - 70cm - 90cm* Number of colors *7* Fire resistance *Bfl* Light fastness *min 4* Rubbing fastness *min 4* Use *23, 32* Recommended installation method *Stretched on underlay*

24"	27"	36"
60	70	90

26"
66



Cordal 7093



Cordal 7039

Cordal

Technicals

Manufacturing process *Wilton*
Backing *Jute*
Pile yarn composition *Wool*
Total height ± 5 mm Pile height ± 3 mm
Total weight ± 2345 g/m²
Total pile weight ± 1020 g/m²
Number of tufts ± 36750
Width *66cm*
Number of colors *5*
Fire resistance *Bfl*
Light fastness *min 4*
Rubbing fastness *min 4*
Use *23 , 32* Recommended installation method
Stretched on underlay



DESIGN



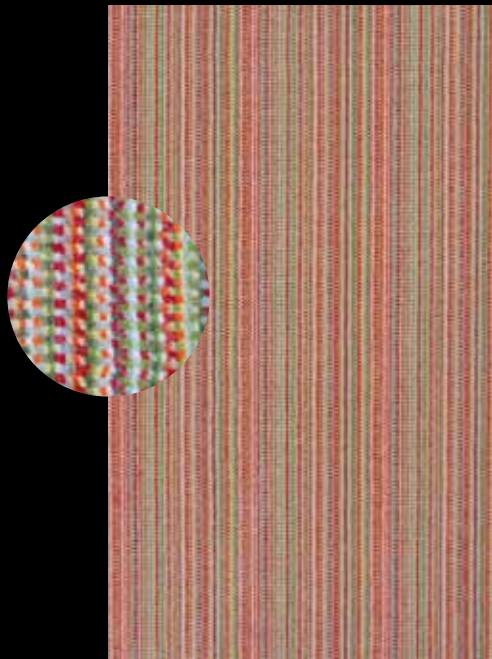
Cordal 7038



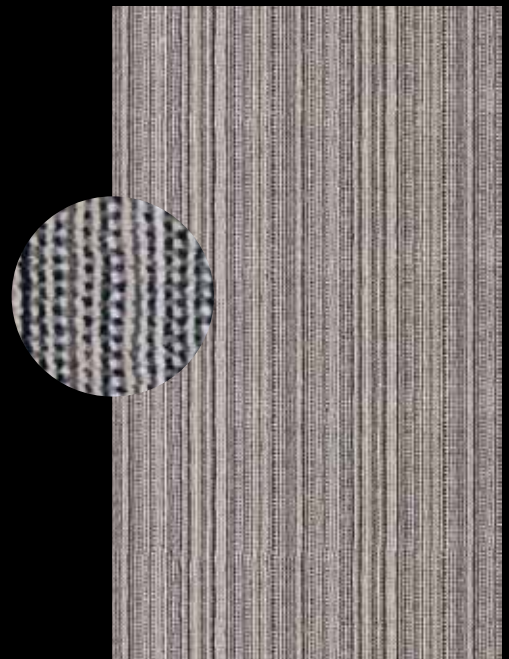
Cordal 6001



Cordal 1028

27"
70

Missouri 15529 / 51



Missouri 15529 / 15

Missouri

Technicals

Manufacturing process *Wilton* Backing *Cotton/
polyester* Pile yarn composition *80%*

Wool 20%PA Total height *±8 mm*

Width *70cm*

Number of colors *2* Fire resistance *Bfl*

Light fastness *min 4* Rubbing fastness *min 4*

Use *23 , 32* Recommended installa-
tion method *Stretched on underlay*



Beach 15527 / 5505



Beach 15527 / 3912

27"
70

BEACH

Technicals

Manufacturing process *Wilton* Backing *Cotton/ polyester* Pile yarn composition *80% Wool 20%PA* Total height *±8 mm*
 Width *70cm*
 Number of colors *4* Fire resistance *Bfl*
 Light fastness *min 4* Rubbing fastness *min 4*
 Use *23,32* Recommended installation method *Stretched on underlay*



Beach 15527 / 10140



Beach 15527 / 1001



Beach 15527 / 2293

DESIGN

27"
70

JAZZ



Jazz 15528 / 15



Technicals

Manufacturing process	<i>Wilton</i>	Backing	<i>Cotton/ polyester</i>
Pile yarn composition	<i>80% Wool 20%PA</i>	Total height	<i>±8 mm</i>
Width	<i>70cm</i>	Number of colors	<i>4</i>
Fire resistance	<i>Bfl</i>	Light fastness	<i>min 4</i>
Rubbing fastness	<i>min 4</i>	Use method	<i>23,32 Stretched</i>
Recommended installation	<i>on underlay</i>		



Jazz 15528 / 95



Jazz 15528 / 75



Jazz 15528 / 55



Elite beige 294



Elite marine 72



Elite bleu 293



Elite rouge 288



Elite prairie 95



Elite vert 291



Elite flammé rouge 10173



Elite flammé-border 10173

DESIGN

1 ELITE

Technicals

Manufacturing process *Wilton* Backing *Jute*
Pile yarn composition *100% Wool* Total height
 $\pm 8 \text{ mm}$ Pile height $\pm 6 \text{ mm}$ Total weight
 $\pm 2182 \text{g/m}^2$ Total pile weight
 $\pm 1358 \text{g/m}^2$ Number of tufts $\pm 127440 \text{ x}2$
Width *60cm* - *70cm*
Number of colors *7* Fire resistance *Cfl-S1*
Recommended installation method *Stretched*
on underlay

24"	27"	36"
60	70	90



Elite sable 19

Technicals

Manufacturing process *Wilton* Backing *Jute*
Pile yarn composition *100% Wool* Total height
 $\pm 8 \text{ mm}$ Pile height $\pm 6 \text{ mm}$ Total weight
 $\pm 2182 \text{g/m}^2$ Total pile weight
 $\pm 1358 \text{g/m}^2$ Number of tufts $\pm 127440 \text{ x}2$
Width *60cm* - *70cm*
Number of colors *2* Fire resistance *Cfl-S1*
Recommended installation method *Stretched*
on underlay

2 ELITE Flammé

24"	27"	36"
60	70	90

3 ELITE Flammé border

The Stair Runner Collection



Rue de la Royenne 45 b 7700 Mouscron Belgium
Tél. : +32 56 393 393
Fax : +32 56 393 306 e.mail : info@depoortere louis.com

www.louisdepoortere.com