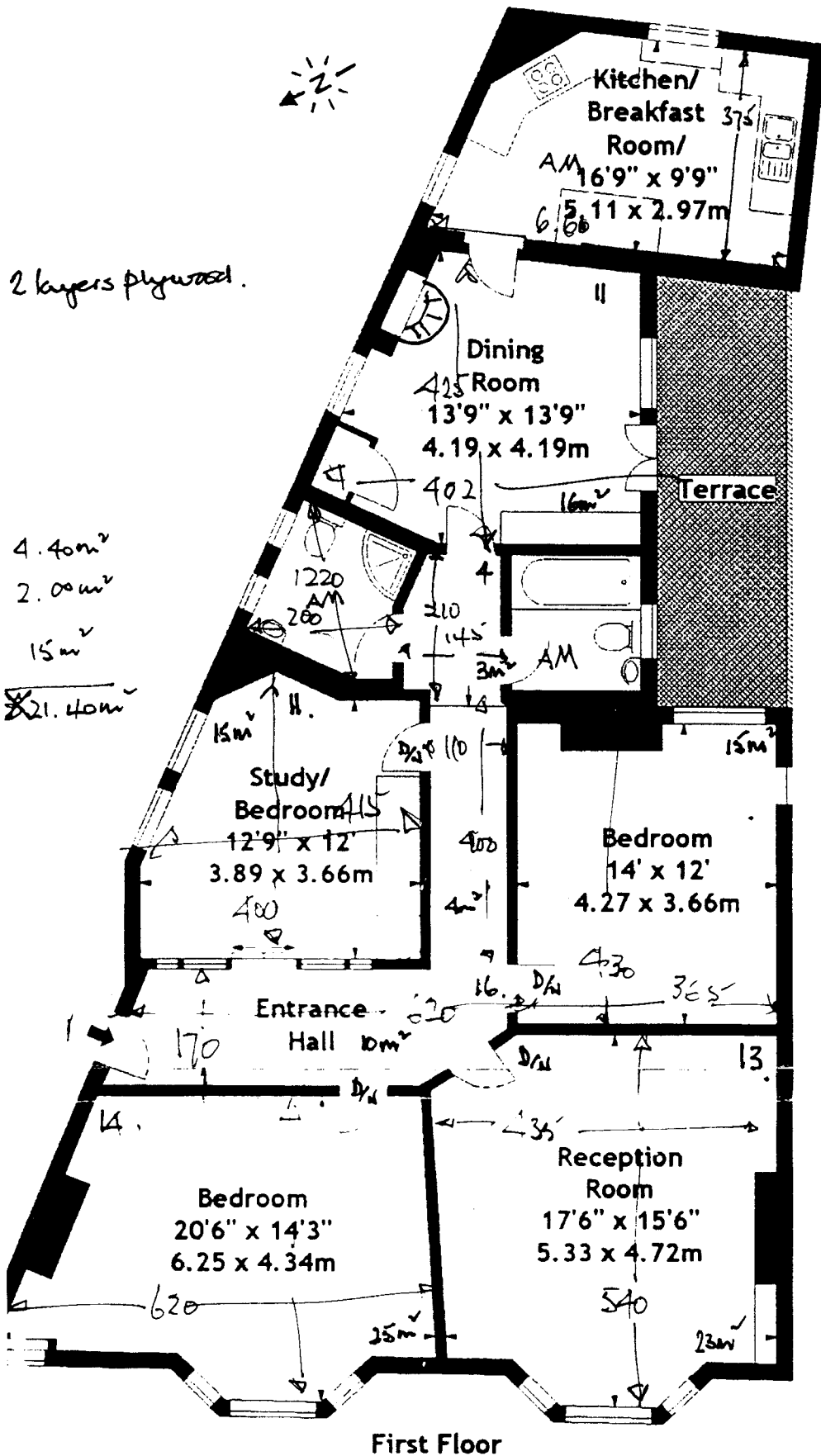


High Street,  
Ashford House, SW19  
Approx. Gross Internal Area  
1436 Sq Ft - 133.40 Sq M

R15834  
WOOLLEN DEN  
1 ASHTON HSE  
HIGH ST  
SW19.  
1 OF 2.



10mm ply to  
Kitchen/Dining.  
2 stages (kitchen  
first).

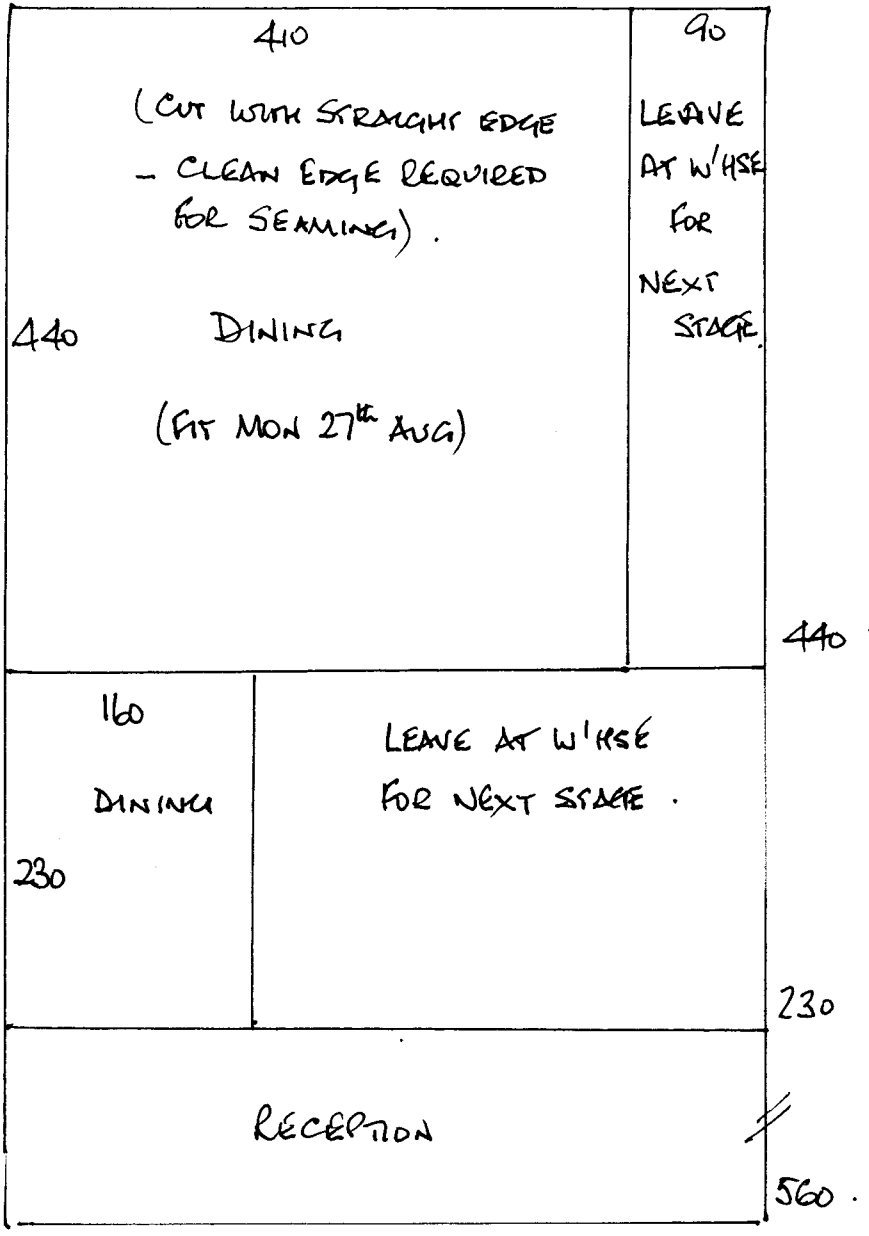
MON 27<sup>th</sup> SEPT  
RECEPTION &  
DINING ROOM.  
(30 SHEETS ~~27~~)  
H/B

U/Lane 111m<sup>2</sup> ✓  
GR 79NO.  
D/N 210.  
H/B 115NO.

Ply. Dining.  
24 x 2 = 48NO  
+ 1 x F32  
Kitchen  
20 x 2 = 40NO.

First Floor

Measured in accordance with RICS guidelines. Every attempt is made to ensure accuracy, however all measurements are approximate.



R15834  
 WOOLFENDEN  
 1 ASTON HOUSE  
 HIGH ST, SW19.

2 2.

Cuts: -  
 440 x 500  
 230 x "  
 560 x "

STAGE 1. MON 27<sup>th</sup> SEPT.  
 50m<sup>2</sup> FITTING  
 30 SHEETS H/B.