

Engineered installation Guide

A. INTRODUCTION

Wood material acts after the surrounding climate, the main factor is the relative humidity (RH, %).

High humidity means the wood - expands; low humidity - it shrinks.

Due to this natural property you must attend to the instructions below.

B. CHECKLIST - TOP 10.

You'll find additional information to each section further below:

1. Store the packages in the proposed room climate and don't open package until you are ready to install your floor.
2. This floor will be floating installed, i.e. keep always a distance to all fixed construction parts.
3. Check your floor construction it must be dry (measure always!), clean, firm and even, eliminate wall to wall carpets and investigate the floor.
4. Choose underlay materials (read carefully below!) according to your own situation - all floors are unique!
5. Measure the room, decide installation direction Note the limitations as per below - due to the natural behaviour of wood!
6. Floor heating - see special advices and requirements – follow the instructions from the system supplier!
7. Install according to section E below, Work clean! Please note the panel release method.
8. Check you floor continuously during the installation. Defectively installed boards can be easily replaced.
9. Keep always the right room climate 45-60 % RH at 18-24 °C.
10. Maintain/clean your FLOOR correct and you will enjoy the floor.

C. GENERAL INFORMATION

I. Preparations

Store your unopened floor packages well spread (not on a pallet) in the same conditions (45-60 % RH at 18-24 °C) as it must have after installation, for at least 2 days.

Tools needed:

Distance wedges, a hand block, an installation support wedge, a hand saw or an el. jig-saw, a pencil, a measuring tape, a drill, a chisel & hammer.

Investigate your sub floor:

Wall to wall carpets must be eliminated. You can install on all kind of construction floors, if they are dry, flat, fixed and clean, for example on old wood floors, cement/concrete floors, ceramic tiles, PVC etc.

For other floor top layers, please contact your distributor.

The sub floor must be:

Dry: Measure and file always cement screed /concrete/anhydrite with adequate test instruments. Cement screed/Concrete need long time dry - in worst cases up to one year.

Requirements, moisture content limits.

For concrete sub floors:

Calcium/Chloride test (US market)

A conservative but generally recommended allowable amount of moisture emission as expressed by the calcium chloride test is 3.0 pounds per 1,000 square feet per 24 hours at the time of the installation of the flooring.

A note of caution: Use care in lid dealing and removal of the dish, and weighing as exposure to atmosphere will dramatically effect the results. (www.woodfloorsonline.com).

< 2 % CM (CM-method)

< 95 % RH see table below:

Concrete slab	Measure depth	Marks
On the ground	0,4 H	Single sided drying
In beams	0,2 H	Double sided drying

H = thickness of the concrete construction, screeding excluded.

It is recommended to contact a certified company (in SE RBK-Inspector) for a correct test of the RH-humidity

For anhydrite < 0,5 % CM (Calcium/Carbide Method)

PLEASE note that all types of cement screed/concrete/tiles sub floors require a moisture barrier - an ageing resistant PE - plastic film, min. 0,20 mm thick. (sd-value \cong 100m) overlapping minimum 20 cm and taped.

For wood floors the moisture content must be ca 8 % (equivalent to ca 50 % RH and 20 °C. Measure and file. Please note that sub floor construction boards, for example particle board/plywood at installation may have a too high moisture content.

Measure, file. Let dry, if necessary.

Flat: Measure always with a vertical positioned floor plank or a straight edge.

Unevenness + 2 mm over 2m must be levelled.

Tip: use flooring paper or newspapers to level your sub floor – never use foams or other soft materials. Check always the floor afterwards.

Firm and Clean: Cross check old wooden floors, nail/screw to eliminate squeaking.

Brush or vacuum clean your floor - work clean!

II. Sound insulation

Sound insulation material must be installed (over the PE-plastic film, if so required).

Use flooring paper, 2 mm cork, HD-foams (over 30 kg/m³) 2-3 mm or other approved underlay materials.

III .Floor heating

Installation over sub floor heating - some important issues.

Max allowed temperature on top of the wood floor is 27 °C.

Please note that normal loose carpets insulate i.e. increase the floor surface temperature about 2 °C!

Do not install Beech/ Maple/Ash over floor heating, These wood species are, due to their natural properties, sensitive to heat, which can cause joint openings, concave warping or squeaking.

Important: Follow the heating regulation recommendations given by the system supplier.

Please note that a 0,2 mm PE-plastic film always must be placed on top of the construction floor either made of cement screed / concrete, etc or also over wood.

Separate floor areas not having sub floor heating with expansion joints.

GBR has provides a document “Wooden floors over under floor heating”.

This can be bought at GBR or downloaded from their homepage www.golvbranschen.se

D. Installation preparations

I. General

Measure the area to be installed and define the installation direction.

It is recommended to install the length direction of the planks parallel to the main light direction. The board width of last row shall not be less than ca 50 mm, If so, adjust the width of the first row to be installed.

When measuring take the free gap requirement of about 10 mm of the floor perimeter into account. In narrow hallways, install the floor parallel to the length way.

II. Floating installation

Your floor is made to be installed floating without glue:

Leave an open expansion gap of min 10 mm around the whole perimeter (use the distance wedges), i.e. also at pipes, stairs, columns, doorframes and thresholds. In large rooms, calculate 1.5 mm / m floor around.

Install maximum 10 m length / width; over this: allow for an expansion gap, to cover with a profile of wood or metal.

The floor must be able to move free – do not connect or install tight to any construction part.

Rooms with off square areas like for example L-,F-, T-, U- shapes, separate the areas with an expansion joint and especially always in door openings.

At any question contact your distributor for further information, installation at doors, glue down, etc

Claims revisable defective floor panels must be made prior to installation

Each board should be inspected to ensure that the quality is acceptable. No claims relating to surface defects can be accepted after installation

E. Installation methods

Method 1: “Panel by panel”

Method 2: “Row by row” - No wedge.

Install

1st row as described in method 1 above.

2nd and following rows:

First only connect panel by panel as in 1st row and then angle in the long side of the whole long row into the 1st row.

Tip:

Connect this 2nd row etc on top of the first and then slowly slide the whole row towards you, till the groove falls in start position.

Angle in by lifting and pushing forward the whole row and fine tune the panel positions with the positioning block as shown on page 5, last fig.

Others

Your floor can very easy be disassembled, which enables replacement during installation and also during use. See section F below.

You can use the floor immediately after installation.

The skirtings must be fixed to the walls (never to the floor).

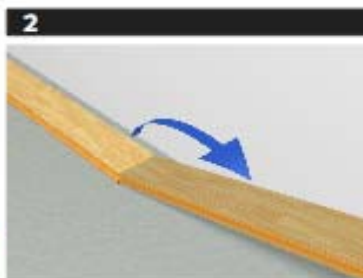


Installation Instructions

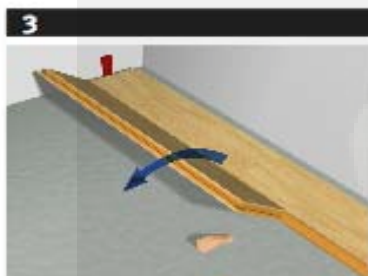
Instructions for installing wood floorings with a locking system based on Välinge technology



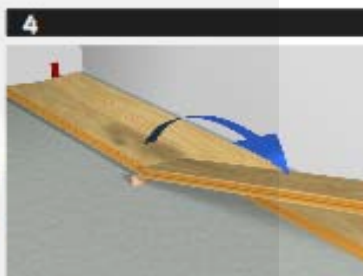
1 Start in a left-hand corner of the room with the locking strip (groove) facing the room. Remember to leave a 20 mm gap between the wall and the board. It is practical to adjust the gap between the long sides and the wall later, when three rows have been laid.



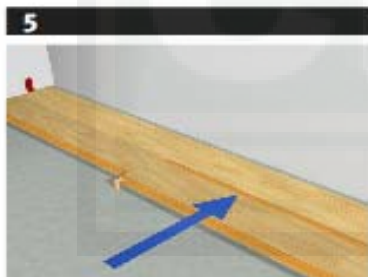
2 Press the next floorboard at an angle to the first one and lay it down. Complete the first row in the same way. Cut the last board to size.



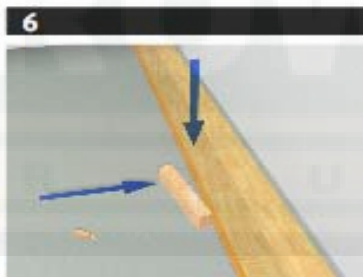
3 Start the next row with the piece left over from the previous row. It must be at least 50 cm long. If the piece is too short, start with a new board, cut in half. Always ensure that the end joints are staggered at least 50 cm. Place the floorboard at an angle against the floorboard in the previous row, push forward and press down at the same time. Put an installation wedge under the board.



4 Press the next floorboard at an angle to the previous one and lay it down to the same level.



5 Use a hard, sturdy striking block to close the long side joint. Do not force the boards together. Move out the wedge and place it under the next board. Continue to install the whole row.



6 When the whole row is completed, remove the wedge and press the boards quite down. Position the floorboard by a slight knocking with a piece of wood.

TF026/71 RA

F. Special situations

Disassembling A (angling up)

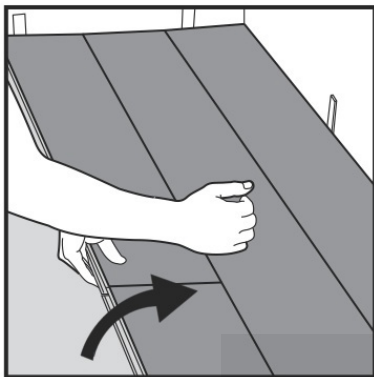


Fig 1

Separate the whole row by carefully lifting up and slightly knocking just above the joint.



Fig 2.

Disassemble the panels by angling the short sides up vertically.

Disassembling B (sliding sideways)

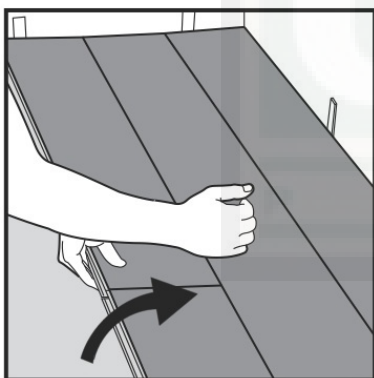


Fig 3.

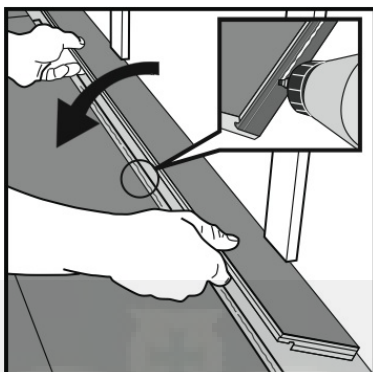
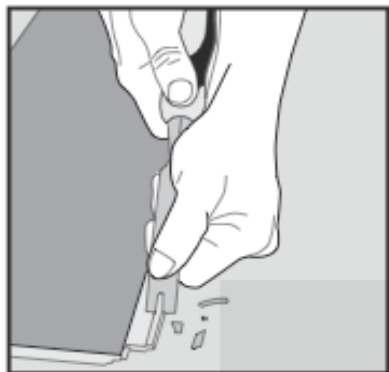
Separate the whole row by carefully lifting up and releasing the whole row.



Fig 4.

Disassemble the panels by sliding horizontally.

Horizontal installation

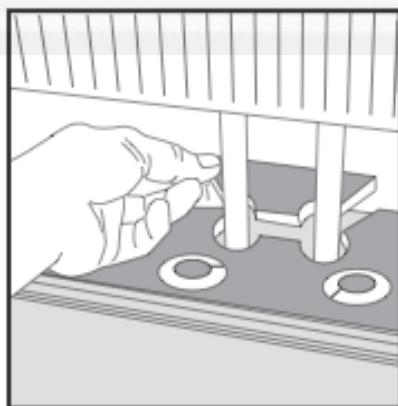


Cut off the locking element with a chisel, put PVAc D3 white glue on the adjusted strip and push the planks horizontally together.

If necessary, place some distances between the last panel and the wall to keep the planks together during the curing time of the glue.

Use the same principle to Short End horizontal connection.

Radiator pipes



Drill the holes 20 mm larger than the diameter of the pipes.

Replace the cut out and put PVAc D3 White glue to the cut edges.

G. After the installation

Room climate – humidifier or de-humidifier needed ?

At all times, the recommended room relative humidity (RH) of 40-60 % and temperature of 18-24 °C should be kept.

If necessary install a humidifier/dehumidifier to ensure the best climate for yourself , furniture and your floor.

If the climate is not kept or the floor is not correct installed, by natural properties the floor can show fine gaps or sound can be noticed.

At dry climate (low RH %) concave or cupping boards or at wet climate (high RH%) convex boards can be noticed.

Cleaning and maintenance

The floor should be cleaned by using a vacuum-cleaner (attachment for wood floors) or brushed. If required, wipe with a damp-dry (well squeezed) cloth.

Use a mild soap or similar.

Any water spilt accidentally must be wiped off immediately.

Floor protection furniture, entrances

Stick felt pads to chair and other pieces of furniture legs.

Place doormats at out door entrances.