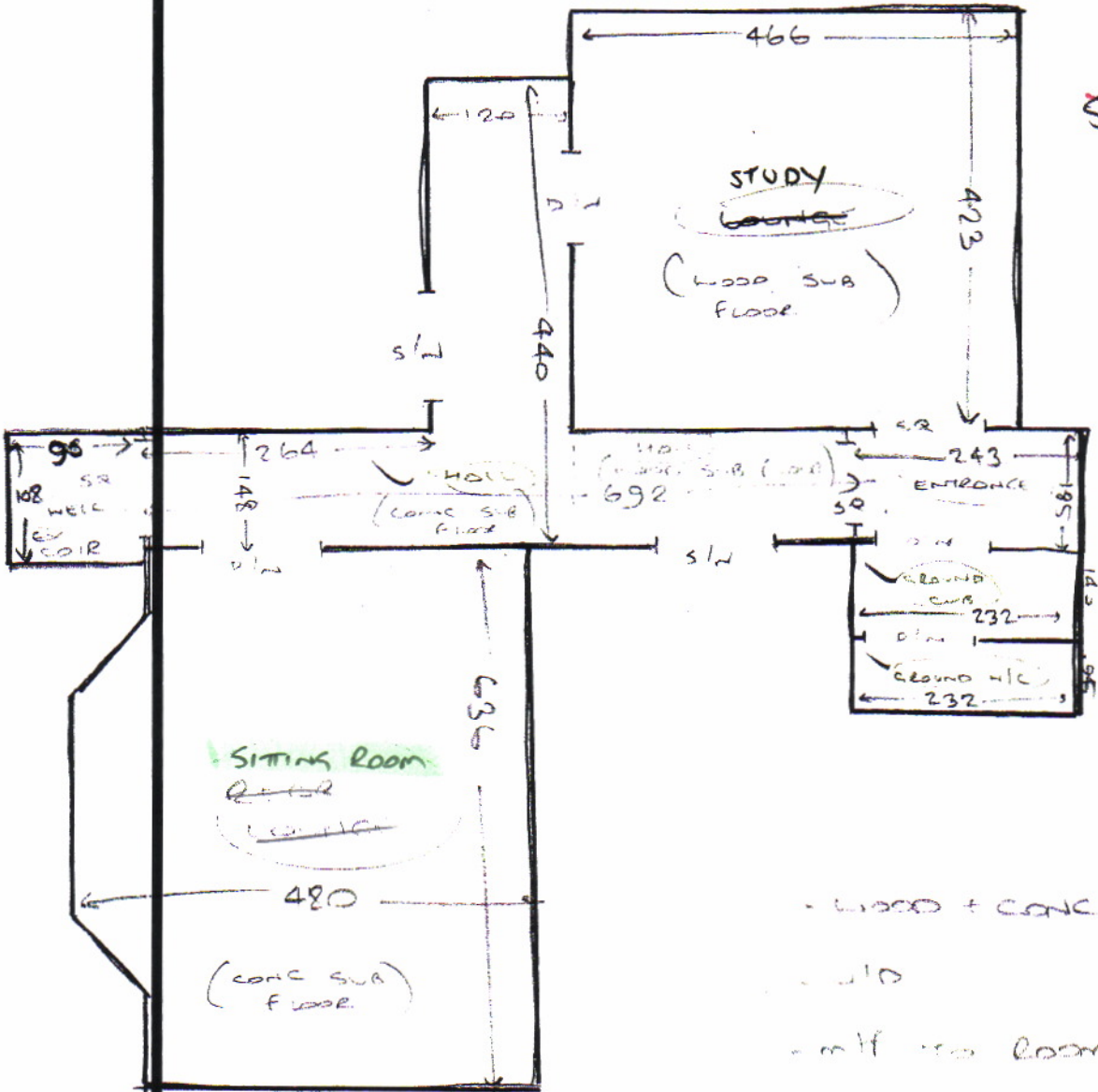


PRIOR

5 of 7



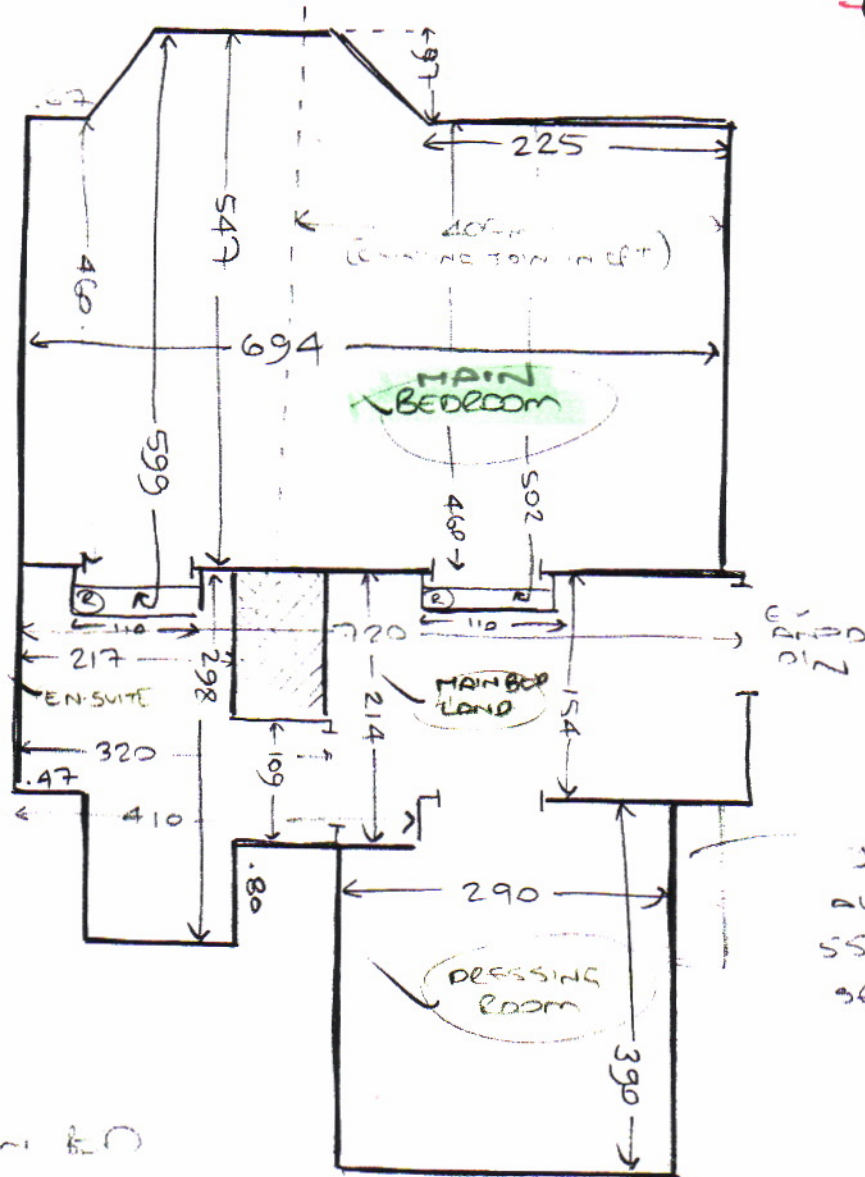
- WOOD + CONC FLOOR
- WOOD
- WITH NO ROOMS
- MOSTLY ON S/E

$23.50 = \text{ROW } \textcircled{B} \left(\frac{23.50}{28.00} \times 5.00 \right)$

$= \text{ROW } \textcircled{A} \left(\frac{23.50}{28.00} \times 5.00 \right)$

= APPROXIMATE LOCATION OF LINE FAULT.

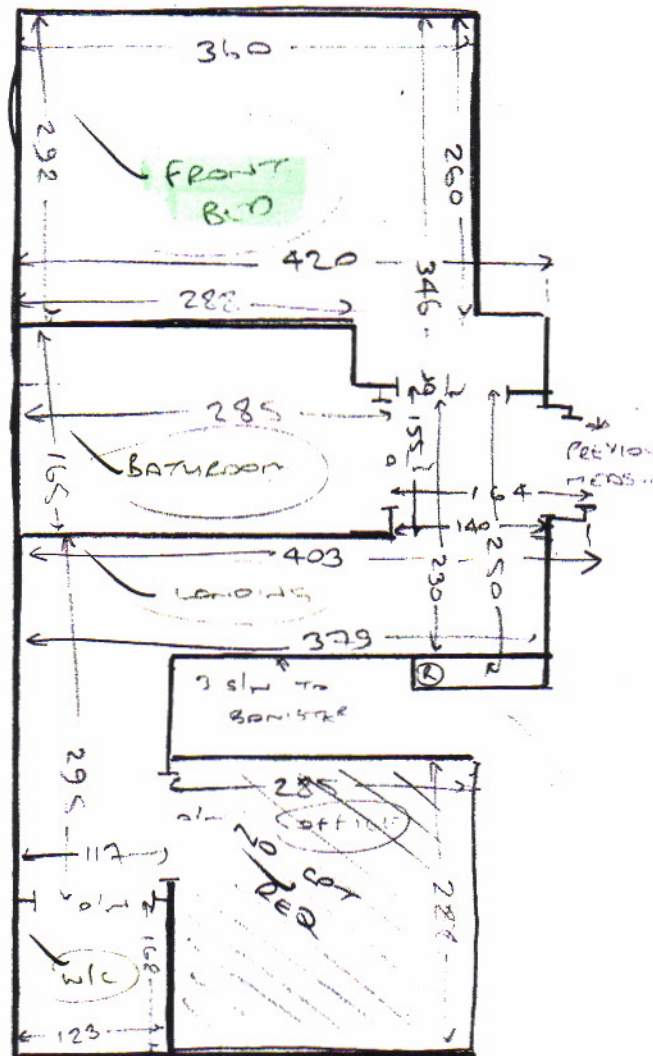
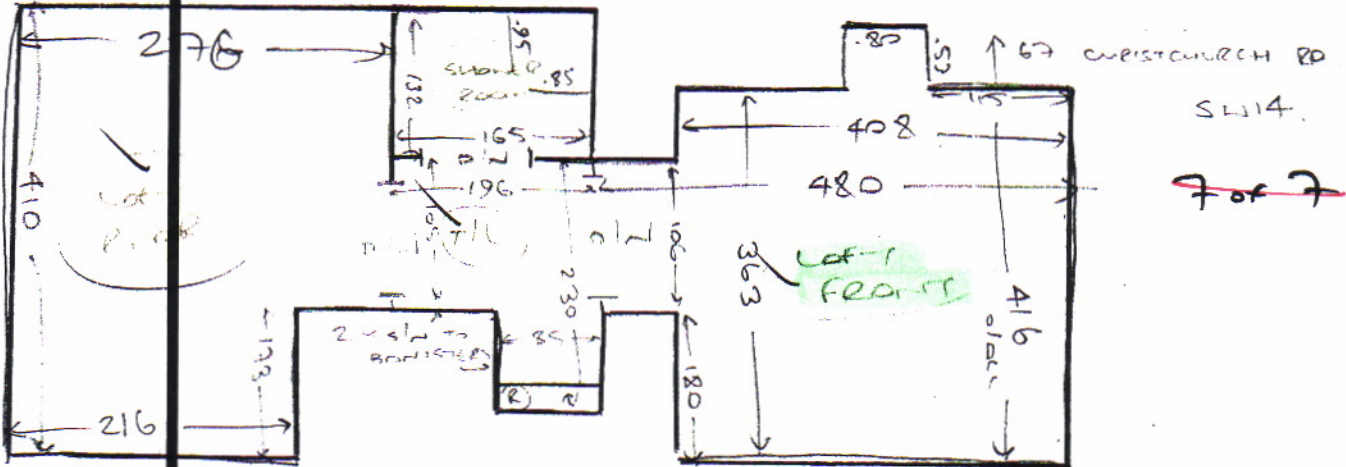
Prior



Plan of
RUNNING MAIN END
@ 90° - WITH SEAMS
TO DOOR + BAY

- WOOD FLOOR
- v10
- m lf
- EX S/E

PRIOR



- ✓ W1 54 86
- ✓ W2 60 102
- ✓ W3 60 70
- ✓ W4 40 72
- ✓ W5 55 87
- ✓ W6 58 103
- ✓ W7 30 74
- ✓ W8 40 74
- ✓ W9 40 72
- ✓ W10 55 85
- ✓ W11 60 101
- ✓ W12 60 72
- ✓ W13 40 72
- ✓ W14 142 171
- ✓ W15 38 90

HALL (SEE PAGE 2)