



Monthly Promotions

- Sale offers up to 65% off = Moorland Twist 50oz @£9.00
- Sale offers up to 65% off Wool loop = Stella (125 only) & Sevilla @£12.00
- Sale offers up to 55% off = Balmoral Velvet @£14.00

**Any orders taken in January for carpet that is IN UNIT 19/32 AND FITTED IN JANUARY take an extra 10% off the total order value**  
**Balance must be paid ON OR BEFORE DELIVERY**

Bonus Ranges	Bonus	Unit	Retail Price m2
Stock Twist 40 & 50oz	25p	Per m2	£18.50 & £22.00
Eden/Simply Stock Natural 5	.50p	Per m2	£19.75
Royal Chess	£1.00	Per m2	£18.00
Chennai	£1.00	Per m2	£22.00
Pastiche	£1.00	Per m2	£18.00
All rem cards with roll no's	£5.00	Per rem	As per rem card
All rem cards with SH numbers	£10.00	Per rem	As per rem card
karndean Quantity Discounts	Up To 4 Boxes	5 - 20 Boxes	Over 20 Boxes
Cash & Carry	10.0%	15%	20.0%
Supply & Fit	Nil	10.0%	Refer to DG
Wood & Laminate Quantity Discounts	Up To 20 m2	21 - 40m2	41m2 plus
Cash & Carry	10.0%	15%	20.0%
Supply & Fit	Nil	10.0%	15%



Retail prices

January 2013

Change	Product	Cut Lengths m2	Full Retail Price
<b>Simply Stock Carpets</b>		<b>Net Priced</b>	
DISCONTINUED	Simply Stock Twist 1	Clearance £15.00	£22.00
DISCONTINUED	Simply Stock Twist 2	Clearance £17.00	£25.50
	Simply Stock Twist 3	£12.00	£18.00
	Simply Stock 30	£16.00	£21.35
	Simply Stock 40	£18.50	£24.75
New Range	Simply Stock 50	£22.00	£29.35
	Simply Stock Natural 1	£19.60	£29.75
	Simply Stock Natural 2	£24.75	£29.75
	Simply Stock Natural 3	£24.00	£32.00
	Simply Stock Natural 4	£19.75	£26.35
	Simply Stock Natural 5	£19.75	£26.35
Change	Product	Cut Lengths m2	Full Retail Price
<b>De branded stock colours</b>		<b>Net Priced</b>	
	Cotswold	£28.00	£35.00
	Elements Design	£31.50	£37.75
	Tralee 40	£15.00	£18.00
	Lulworth	£17.00	£21.00



Retail prices

January 2013

Change	Product	Cut Lengths m2	
	<b>Clearance Carpets</b>	<b>Net Priced</b>	<b>Clearance offer</b>
REMS ONLY	Andalucia	£14.00	Until further notice
	Balmoral velvet	£16.00	£14.00
New Range	Bamboo	£20.00	
	Candy Stripe	£16.00	£12.00
	Celtic twist	£14.00	£10.50
New Range	Chancellor Twist 42oz	£14.00	
REMS ONLY	Chelsea Original Colours	£16.00	
	Chennai	£26.00	£22.00
	Chequers	£18.00	
REMS ONLY	Freedom twist	£16.00	£12.00
REMS ONLY	Life Coir	£18.00	£12.00
	Lino Flatweave	£16.00	£12.00
	Pastiche	£22.00	£18.00
	Period Velvet (seconds)	£16.00	
	Royal Chess	£22.00	£18.00
New Range	Rumba Twist 30	£12.00	
ALL SOLD	Safi - 100% wool	£18.00	
	Sevilla	£18.00	£12.00
New Range	Stella - Colour ST-125 ONLY	£16.00	£12.00
New Range	Stella - (Colours ST-102/ST-112/ST-114)	£16.00	
	Sydney	£22.00	
	True Velvet	£22.00	
New Range	Ultima Major, Talana & Fontain (seconds)	£14.00	
	West End Supreme (seconds)	£18.00	
REMS ONLY	West Country 40	£16.00	
REMS ONLY	Woodcroft Twist	£12.00	
REMS ONLY	Woolcord Diagonal	£16.00	



Retail prices

January 2013

Change	Product		Discount
<b>Value Collection</b>			<b>Net Priced</b>
	Value Berber 2	£17.00	
	Value Loop 1	£16.00	
	Value loop 3 - 100% wool	£18.00	
	Value Twist Heather 30	£16.00	
	Value Twist Heather 40	£18.00	
	Value Twist Heather 50	£19.00	
	Value Twist Plain 40	£21.25	
	Value Twist Plain 50	£25.25	
Change	Product	Cut Lengths m2	Discount
<b>Mrc Brand Carpets</b>			<b>10% Cuts</b>
	Andorra	£28.75	£25.88
New Range	Appleby 32*	£24.75	£22.28
New Range	Appleby 40*	£27.75	£24.98
New Range	Appleby 50*	£32.75	£29.48
New Range	Appleby 60*	£38.25	£34.43
	Beaufort	£27.00	£24.30
	Boston	£33.75	£30.38
	Brasil	£30.95	£27.86
	Budapest	£28.75	£25.88
	Camborne Velvet	£40.75	£36.68
	Caribbean	£37.50	£33.75
	Chamonix	£40.25	£36.23
	Chelsea	£51.50	£46.35
	Cheltenham	£27.00	£24.30
	Chequers	£25.00	£22.50
	Chile	£35.75	£32.18
	Cobalt	£25.50	£22.95
	Cobalt Elite	£29.50	£26.55
	Cobalt Heather	£25.00	£22.50
	Cobalt Heather Elite	£28.75	£25.88
	Columbia	£70.25	£63.23
	Corby	£27.00	£24.30
	Cotswold & Cotswold Stripe	£35.00	£31.50
	Dakota	£37.75	£33.98
	Danube	£21.50	£19.35
	Earthtones Boucle	£37.75	£33.98
	Earthtones Brussels	£37.75	£33.98
	Eden	£26.35	£23.72
	Elements Design	£37.75	£33.98
	Elements Plain	£37.75	£33.98
	Faux Silk	£42.50	£38.25
	Fine Cord	£29.50	£26.55
	Georgia I, II & III	£19.00	£17.10
	Goodwood	£49.95	£44.96
	Hamilton	£53.25	£47.93
	Hanoi	£29.75	£26.78
	Havana	£35.50	£31.95
DISCONTINUED	Haydock	£23.75	£21.38
New Range	Indulgence Plain	£81.00	£72.90
New Range	Indulgence Ruches	£81.00	£72.90
	Iowa	£30.25	£27.23

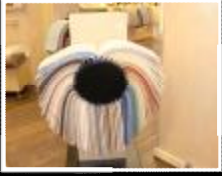


Retail prices

January 2013

Change	Product		Discount
	Iowa Super	£35.75	£32.18
	Kentucky	£20.25	£18.23
	Kentucky Supreme	£23.40	£21.06
	Kiev	£28.75	£25.88
	Lille	£28.75	£25.88
	Lulworth	£21.00	£18.90
	Macedonia	£28.75	£25.88
	Macedonia	£28.75	£25.88
	Malham Velvet	£35.75	£32.18
	Malta	£28.75	£25.88
	Manhattan	£61.75	£55.58
	Marble Hill	£68.00	£61.20
	Metz	£38.75	£34.88
	Michigan	£41.75	£37.58
	Miku	£26.35	£23.72
	Monaco	£42.00	£37.80
DISCONTINUED	Moulton II	£0.00	£0.00
DISCONTINUED	Moulton Premier II	£0.00	£0.00
DISCONTINUED	Moulton Royale II	£0.00	£0.00
New Range	Navan	£42.50	£38.25
	Ohio Rib/Cord & Stripe	£26.25	£23.63
	Ouse	£51.00	£45.90
	Plain Loop	£32.00	£28.80
	Rannoch	£28.75	£25.88
	Rutland 40	£24.95	£22.46
	Rutland 50	£29.50	£26.55
	Rutland 60	£33.50	£30.15
	Sudbury Twist	£22.00	£19.80
	Sudbury Twist Super	£25.75	£23.18
	Sudbury Twist Supreme	£29.75	£26.78
New Range	Tamar	£40.75	£36.68
	Timor	£36.00	£32.40
	Tralee 30	£15.50	£13.95
	Tralee 40	£18.00	£16.20
	Victoria	£32.00	£28.80
New Range	Waveney	£40.50	£36.45
	West Village	£42.00	£37.80
	Wexford	£25.75	£23.18
	Windemere	£26.50	£23.85
	Woodcroft	£27.00	£24.30
	Woodstock	£48.75	£43.88

\* Appleby collection has 20% discount but no roll discount



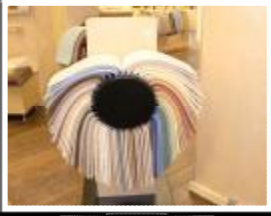
Retail prices

January 2013

Change	Product	Retail m2
<b>Stock Wood</b>		<b>Net Priced</b>
New Range	Oak brushed & oiled 21x180x2150mm-2.11m2	£46.00
	Oak Click 18mm x 189mm x 2.81m2 pack	All sold
	Pipe Collars	£2.50 each
	Stop Ends 1m	£15.00 each
	Twin Joiners 1m	£15.00 each
	Nosings 1m	£25.00 each
	Scotia 2.5m length	£5.00 each

Change	Product	Retail m2	See cover page for Discount terms		
<b>Laminate (Halls)</b>			Discount - 10%	Discount - 15%	Discount - 20%
	LAM001 - Easy	£14.50	£12.33	£12.33	£11.60
	LAM002 - Manor	£17.95	£15.26	£15.26	£14.36
	LAM003 - Manor House	£18.95	£16.11	£16.11	£15.16
	LAM004 - Stately Home	£20.95	£17.81	£17.81	£16.76
	LAM005 - Exquisite	£21.95	£18.66	£18.66	£17.56

Change	Product	Retail m2	See cover page for Discount terms		
<b>Bespoke Wood</b>			Discount - 10%	Discount - 15%	Discount - 20%
	W0001	£25.00	£22.50	£21.25	£20.00
	W0002	£45.00	£40.50	£38.25	£36.00
	W0003	£41.00	£36.90	£34.85	£32.80
	W0004	£41.00	£36.90	£34.85	£32.80
	W0005	£42.00	£37.80	£35.70	£33.60
	W0006	£42.00	£37.80	£35.70	£33.60
	W0008	£55.00	£49.50	£46.75	£44.00
	W0009	£45.00	£40.50	£38.25	£36.00
	W0010	£45.00	£40.50	£38.25	£36.00
	W0011	£45.00	£40.50	£38.25	£36.00
	W0012	£43.00	£38.70	£36.55	£34.40
	W0013	£44.00	£39.60	£37.40	£35.20
	W0014	£43.00	£38.70	£36.55	£34.40
	W0015	£50.00	£45.00	£42.50	£40.00
	W0016	£50.00	£45.00	£42.50	£40.00
	W0017	£56.00	£50.40	£47.60	£44.80
	W0018	£60.00	£54.00	£51.00	£48.00
	W0019	£58.00	£52.20	£49.30	£46.40
	W0020	£54.00	£48.60	£45.90	£43.20
	W0021	£55.00	£49.50	£46.75	£44.00
	W0022	£88.00	£79.20	£74.80	£70.40
	W0023	£124.00	£111.60	£105.40	£99.20
	W0029	£42.00	£37.80	£35.70	£33.60
	W0030	£50.00	£45.00	£42.50	£40.00
	W0031	£42.00	£37.80	£35.70	£33.60
	W0032	£49.00	£44.10	£41.65	£39.20
	W0034	£49.00	£44.10	£41.65	£39.20
	W0035	£51.00	£45.90	£43.35	£40.80
	W0036	£51.00	£45.90	£43.35	£40.80
	W0037	£46.00	£41.40	£39.10	£36.80
	W0200	£52.00	£46.80	£44.20	£41.60
	W0201	£72.00	£64.80	£61.20	£57.60
	W0202	£84.00	£75.60	£71.40	£67.20
	W0203	£75.00	£67.50	£63.75	£60.00
	W0204	£73.00	£65.70	£62.05	£58.40
	W0205	£68.00	£61.20	£57.80	£54.40
	W0206	£62.00	£55.80	£52.70	£49.60
	W0207	£63.00	£56.70	£53.55	£50.40
	W0208	£67.00	£60.30	£56.95	£53.60
	W0209	£27.00	£24.30	£22.95	£21.60
	W0210	£20.00	£18.00	£17.00	£16.00



Retail prices

January 2013

Change	Product	See cover page for Discount terms			
	Karndean	Discount 10%	Discount 15%	Discount 20%	
	Art Select Glass	£62.50	£56.25	£53.13	£50.00
	Art Select Oak Premier	£48.00	£43.20	£40.80	£38.40
	Art Select Oak Royale	£48.00	£43.20	£40.80	£38.40
	Art Select Handcrafted Wood	£48.00	£43.20	£40.80	£38.40
	Art Select Island Limestone	£62.50	£56.25	£53.13	£50.00
	Art Select Parquet AP31 Russett Oak	£64.50	£58.05	£54.83	£51.60
	Art Select Parquet	£64.50	£58.05	£54.83	£51.60
	Art Select Tudor Brick	£110.00	£99.00	£93.50	£88.00
	Da Vinci Antique Ceramic	£44.00	£39.60	£37.40	£35.20
	Da Vinci Ceramic	£42.00	£37.80	£35.70	£33.60
	Da Vinci Slate	£42.00	£37.80	£35.70	£33.60
	Da Vinci Stone & Marble	£42.00	£37.80	£35.70	£33.60
	Da Vinci Stone	£42.00	£37.80	£35.70	£33.60
	Da Vinci Woodplank	£42.00	£37.80	£35.70	£33.60
	Knight tile Ceramic	£25.00	£22.50	£21.25	£20.00
	Knight Tile Marble	£25.00	£22.50	£21.25	£20.00
	Knight Tile Slate	£25.00	£22.50	£21.25	£20.00
	Knight Tile Stone	£25.00	£22.50	£21.25	£20.00
	Knight Tile Woodplank	£25.00	£22.50	£21.25	£20.00
	Michelangelo Antique Timber	£40.00	£36.00	£34.00	£32.00
	Michelangelo Italian Mosaic	£40.00	£36.00	£34.00	£32.00
	Michelangelo Metallica	£40.00	£36.00	£34.00	£32.00
	Michelangelo MS5 Panel	£43.50	£39.15	£36.98	£34.80
	Michelangelo Spanish Pebble	£42.00	£37.80	£35.70	£33.60
	Opus Stone (457mm x 305mm)	£33.00	£29.70	£28.05	£26.40
	Opus Stone (457mm x 457mm)	£33.00	£29.70	£28.05	£26.40
	Opus Stone (457mm x 610mm)	£33.00	£29.70	£28.05	£26.40
	Opus Woodplank (915mm x 102mm)	£33.00	£29.70	£28.05	£26.40
	Opus Woodplank (915mm x 152mm)	£33.00	£29.70	£28.05	£26.40
	Opus Woodplank (915mm x 228mm)	£33.00	£29.70	£28.05	£26.40
	Renoir Concrete	£33.00	£29.70	£28.05	£26.40
	Renoir Fuego	£33.00	£29.70	£28.05	£26.40
	Renoir Marble	£33.00	£29.70	£28.05	£26.40
	Renoir Slate Panel	£49.50	£44.55	£42.08	£39.60
	Renoir Travetine	£33.00	£29.70	£28.05	£26.40
	Renoir Wood Plank 915x102mm	£33.00	£29.70	£28.05	£26.40
	Renoir Woodplank 915x152mm	£33.00	£29.70	£28.05	£26.40
	Van Gogh Longstrip	£35.00	£31.50	£29.75	£28.00

Change	Product	Retail m2
	<b>Borders &amp; Corners</b>	<b>Net Priced</b>
	AS Borders 900mm	£10.04
	DV Borders 900mm	£16.09
	DV Corners	£3.02
	KT Borders 900mm	£10.04
	KT Corners	£2.05
	MA Borders 900mm	£10.04
	MA Corners	£2.05
	RE Borders 900mm	£10.04
	RE Corners	£2.05

Change	Product	Retail m2
--------	---------	-----------



Retail prices

January 2013

See cover page for Discount terms

Change	Product	Retail m2
	<b>Design Strips</b>	<b>Net Priced</b>
	Design Strips 3/5/10mmx915(25)	£12.68
	Design Strips 30mm x 915mm(25)	£15.60
	Design Strips 76mm x 915mm(25)	£20.48
	Design Strips Custom Surcharge	£204.75
	Feature Strips 5mm - 25m Box	£9.07
	Metallic Strips 3/5/10x915(25)	£12.68
	Metallic Strips 30 x 915mm(25)	£15.60
	Metallic Strips 76 x 915mm(25)	£20.48
Change	Product	Retail m2
	<b>Design Charges</b>	<b>Net Priced</b>
	Custom Border/Corner Surcharge	£204.75
	Design Charge Herringbone M2	£9.75
	Design Charge Keysquares M2	£8.29
Change	Product	Retail m2
	<b>Care &amp; Maintenance</b>	<b>Net Priced</b>
	Floor Care Kit (Kardean)	£42.88
	Kardean Cleaner 2ltr (500m2)	£10.12
	Kardean Cleaner 5ltr (1250m2)	£20.07
	Kardean Refresh 2ltr (40m2)	£28.26
	Kardean Refresh 5ltr (90m2)	£54.58
	Kardean Stripper 2ltr (40m2)	£10.12
	Kardean Stripper 5ltr (250m2)	£20.07
Change	Product	Retail m2
	<b>Adhesives</b>	<b>Net Priced</b>
	Acrylic Adhesive 15ltr (KAR)	£99.94
	Acrylic Adhesive 2.5ltr (KAR)	£23.89
	Acrylic Adhesive 5ltr (KAR)	£40.95
	Epoxy Adhesive 4KG (KAR)	£53.63
	High Temp Adhesive 15ltr(KAR)	£99.94
	High Temp Adhesive 5 ltr(KAR)	£40.95
	Pressure Sensative 15ltr (KAR)	£99.94
	Pressure Sensative 2.5ltr(KAR)	£23.89
	Pressure Sensative 5ltr (KAR)	£40.95
	Skim Coat 5kg (KAR)aprox 25m2	£20.48
	Versilay 2.88m2 Pack	£60.75
	Versilay Plastic & Tape (50m2 plastic 25 lin m tape)	£76.70



Retail prices

January 2013

Change	Product	Cut Lengths m2
	<b>Vinyl Display</b>	<b>Net priced</b>
	Bright Shades	£13.50
	Clouds	£17.25
	Crete	£18.75
	Freedom Tiles	£18.25
	Galaxy	£19.25
	Jet Set	£13.50
	Luxury Step	£16.95
	Metals	£13.50
	Next Step	£19.25
	Select Oak	£20.50
	Timber Time Popular	£11.50
	Timber Time Classical	£17.25
	Timber Time Ultimate	£19.25
	True Grip	£16.50



mrcarpet  
DESIGNS FOR FLOORS

Retail prices

January 2013

Change	Product	Retail Per Unit/m2
<b>Underlay</b>		
	CFF Wood Underlay M2	£3.50
	Fomalux Underlay M2	£7.95
	H/M 3 Dimensions Underlay M2	£7.95
	H/M 42oz Felt Underlay M2	£5.25
	Homemaker 10mm PU Foam M2	£6.25
	Homemaker Low Tog Underlay M2	£8.25
	Padfelt Underlay M2	£0.70
<b>Door Bars</b>		
	Ali D\Naplock NOW 3' (.90)	£7.50
	Ali S\Naplock NOW 3' (.90)	£7.50
	Ali Zig Zag Std NOW 3' (.90)	£7.50
	Anod D\Naplock NOW 3' (.90)	£7.50
	Anod S\Naplock NOW 3' (.90)	£7.50
	Anod Zig Zag Std NOW 3' (.90)	£7.50
	Brass D\Naplock NOW 3' (.90)	£30.00
	Brass S\Naplock NOW 3' (.90)	£20.00
	Brass Timber/Tile NOW 3'(.90)	£30.00
	Chrome D/Nap NOW 3' (.90)	£45.00
	Chrome S/Nap NOW 3' (.90)	£30.00
	Chrome Timber/Tile NOW 3'(.90)	£45.00
	Nisheen D/Nap NOW 3' (.90)	£45.00
	Nisheen S/Nap NOW 3' (.90)	£30.00
	Nisheen Timber/Tile NOW 3'(.90)	£45.00
	Polished Ali - D/Nap 900mm	£25.00
	Polished Ali - S/Nap 900mm	£25.00
	Polished Ali - Tile Edge 900mm	£25.00
	Satin Ali - D/Nap 900mm	£25.00
	Satin Ali - S/Nap 900mm	£25.00
	Satin Ali - Tile Edge 900mm	£25.00
Change	Product	Retail Per Unit/m2
<b>Adhesives</b>		
	CFF Adhes/PVA Laminate 1 Ltr	£9.00
	F3 5 L - Tub	£20.00
	F3 15 L - Tub	£52.00
	F31 Opaque - 1 Tube	£8.50
	F31 White - 1 Tube	£8.50
	F32 Tube	£4.00
	F44 5 L - Tub	£25.00



mrcarpet  
DESIGNS FOR FLOORS

Retail prices

January 2013

Change	Product	Retail Per Unit/m2
	F44 2.5 L - Tub	£15.00
	Gripper Adhesive Fast Set	£8.95
	Skirting Sealer White Acrylic	£3.00
	Spray Adhesive - 1 Can	£5.50
	<b>Floor Prep</b>	
	Green Bag 25 Kg	£12.00
	Hardboard 4' x 2' sheet /stk	£4.00
	Latex 128 - 5 Ltr Bottle	£18.00
	Plywood 4' x 2' 6mm sheet/stk	£7.50
	<b>Miscellaneous</b>	
	Coir Matting Nat 1m & 2 m wide(17mm) M2	£35.00
	Damp Membrane 1000g / per Lin M x 4m	£3.50
	Smoothedge Conc Pin 5' Length	£1.75
	Smoothedge NO PIN 5' Length	£1.75
	Smoothedge Wood Pin 5' Length	£1.75