

P26921 - Bloomfield

Fitting instruction

Monday, 13 June 2016

Prepared For Roy Heridge

Identified 5 Issues

Nigel Symonds

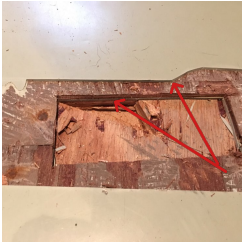
Mr Carpet Ltd





Alarm Instruction On Entry

Hold key fob against top L/H corner to turn alarm off



Sub-floor prep

Take up top layer of 6mm ply & both layers of 2mm rubber flooring. Lay new 6mm ply & screed over with Stoppag 700 Flex. Lay tiles broken bond with 5mm feather strip between tiles



Tile Direction

Lay Opus - SP213 Urbus broken bond with 5mm AF05 feature stripping between tiles. Use universal adhesive due to South East facing Velux windows in roof



Alarm Instruction On Exit

Hold key fob against top L/H corner & then press 'Yes' to set alarm



Cleaning Products

Leave 1 x Kardean Clean Start pack with customer for her own use
