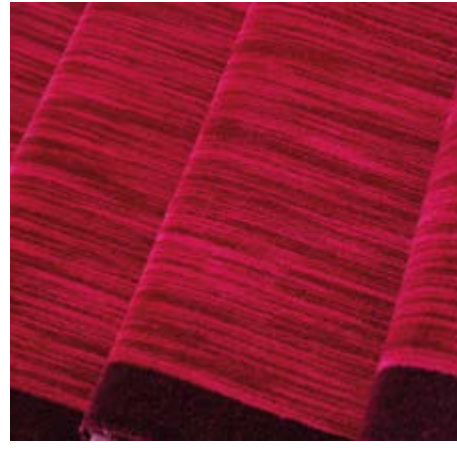


LOUIS DE POORTERE
BY ANDRE VERNIER & FILS
Rue de la Royenne 45
7700 Mouscron BELGIUM
Phone : +32 (0)56 393 393
Fax : +32 (0)56 393 306

LOUIS DE POORTERE USA
Phone : 888 430 5868
Fax : 888 430 5869
USA@depoortere.com



info@depoortere.com
www.louisdepoortere.com



the
Stair Runner
collection



MADE IN
BELGIUM

SAN LORENZO is a range of stair runners that could last a lifetime! This is possible with a superb "three shot" woven carpet. The Wilton jacquard weave offers an authentic woven selvedge in this beautiful collection of timeless designs which will add elegance to any location. It's made of 80% wool and 20% nylon.

EXCLUSIVE TRIPLE SHOT QUALITY
MODERN CLASSICAL APPEAL
WOVEN SELVEDGE
EXTRA DURABILITY

SAN LORENZO
stair runner collection

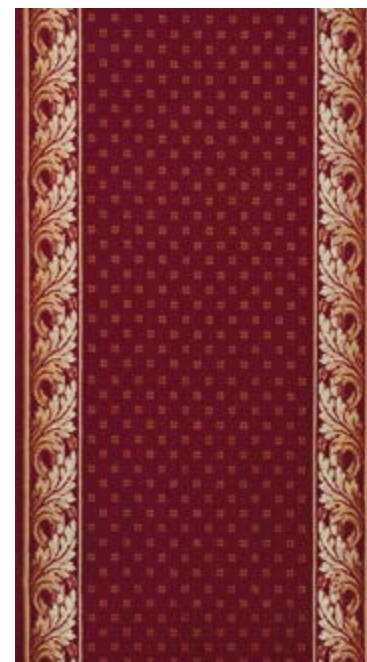
ROYAL AUBUSSON

SAN LORENZO stair runner collection

TECHNICALS

Manufacturing process	Wilton 3 shots
Pile yarn composition	80% wool / 20% PA
Total height	± 9,6mm / 0,38"
Pile height	± 7,6mm / 0,30"
Width	70 cm - 90 cm
Number of tufts	± 222.312
Total weight	± 3150 g/m ²
Pile weight	± 2200 g/m ²
Recommended installation method	stretched on underlay

70cm - 90cm
27" - 36"



ROYAL AUBUSSON 15503 / 45500



ROYAL AUBUSSON 15503 / 49500



ROYAL AUBUSSON 15503 / 45000



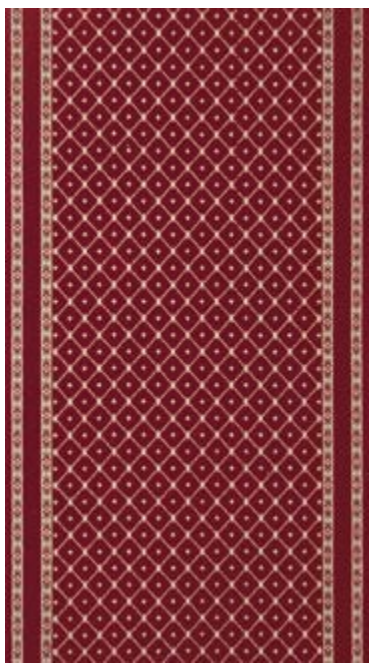
ROYAL AUBUSSON
15503 / 49500



ROYAL AUBUSSON
15503 / 45500

ROYAL AUBUSSON

SAN LORENZO stair runner collection



HAMILTON 15514 / 45500



HAMILTON 15514 / 49500

TECHNICALS

Wilton 3 shots
80% wool / 20% PA
± 9,6mm / 0,38"
± 7,6mm / 0,30"
70 cm - 90 cm
± 222.312
± 3150 g/m2
2200 g/m2
stretched on underlay

Manufacturing process
Pile yarn composition
Total height
Pile height
Width
Number of tufts
Total weight
Pile weight
Recommended installation method

70cm - 90cm
27" - 36"



HAMILTON

HAMILTON
15514 / 45500

SAN LORENZO stair runner collection

TECHNICALS

Manufacturing process	Wilton 3 shots
Pile yarn composition	80% wool / 20% PA
Total height	±9,6mm / 0,38"
Pile height	±7,6mm / 0,30"
Width	70 cm - 90 cm
Number of tufts	±222.312
Total weight	±3150 g/m2
Pile weight	±2200 g/m2
Recommended installation method	stretched on underlay

70cm - 90cm
27" - 36"



GLASGOW 15517 / 45000



GLASGOW 15517 / 47001



GLASGOW 15517 / 49504

GLASGOW

GLASGOW
15517 / 49504

SAN LORENZO stair runner collection



CLASSIC 15520 / 42500

CLASSIC 15520 / 45500

CLASSIC 15520 / 49002

CLASSIC 15520 / 49500

TECHNICALS

Wilton 3 shots
 80% wool / 20% PA
 ± 9,6mm / 0,38"
 ± 7,6mm / 0,30"
 70 cm - 90 cm
 ± 222.312
 ± 3150 g/m2
 2200 g/m2
 stretched on underlay

Manufacturing process
 Pile yarn composition
 Total height
 Pile height
 Width
 Number of tufts
 Total weight
 Pile weight
 Recommended installation method

70cm - 90cm
 27" - 36"



CLASSIC
 15520 / 42500

CLASSIC
 15520 / 45500

CLASSIC

SAN LORENZO stair runner collection

TECHNICALS

Manufacturing process	Wilton 3 shots
Pile yarn composition	80% wool / 20% PA
Total height	± 9,6mm / 0,38"
Pile height	± 7,6mm / 0,30"
Width	70 cm - 90 cm
Number of tufts	± 222.312
Total weight	± 3150 g/m ²
Pile weight	± 2200 g/m ²
Recommended installation method	stretched on underlay

70cm - 90cm
27" - 36"



ROYAL 15495 / 45502



ROYAL 15495 / 49501

ROYAL

ROYAL
15495 / 45502

ROYAL
15495 / 49501

SAN LORENZO stair runner collection



ANTIC WASHED 15510 / 45005 ANTIC WASHED 15510 / 45007 ANTIC WASHED 15510 / 49003 GARDEN WASHED 15506 / 45004

TECHNICALS

Wilton 3 shots
 80% wool / 20% PA
 ±9,6mm / 0,38"
 ±7,6mm / 0,30"
 70 cm - 90 cm
 ±222.312
 ±3150 g/m2
 2200 g/m2
 stretched on underlay

Manufacturing process
 Pile yarn composition
 Total height
 Pile height
 Width
 Number of tufts
 Total weight
 Pile weight
 Recommended installation method

70cm - 90cm
 27" - 36"



ANTIC WASHED
 15510 / 45007

ANTIC WASHED
 15510 / 49003



GARDEN WASHED
 15506 / 45004



ANTIC WASHED
 15510 / 45005

ANTIC WASHED & GARDEN WASHED

SAN LORENZO stair runner collection

TECHNICALS

Manufacturing process	Wilton 3 shots
Pile yarn composition	80% wool / 20% PA
Total height	±9,6mm / 0,38"
Pile height	±7,6mm / 0,30"
Width	70 cm - 90 cm
Number of tufts	±222.312
Total weight	±3150 g/m2
Pile weight	±2200 g/m2
Recommended installation method	stretched on underlay

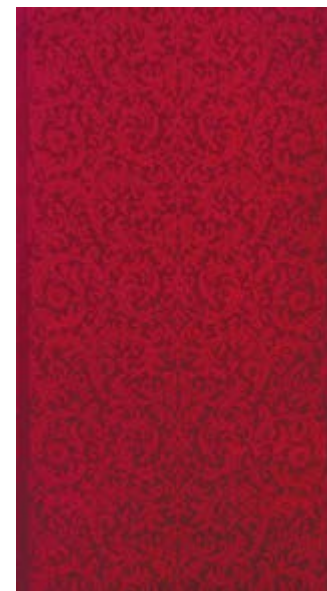
70cm - 90cm
27" - 36"



DAMASK 15497 / 47001



DAMASK 15497 / 49000



DAMASK 15497 / 45500



PALAZZO 15516 / 45001

DAMASK & PALAZZO

DAMASK
15497 / 49000

PALAZZO
15516 / 45001

SAN LORENZO stair runner collection



KILIM 15501 / 45003



HADSCHLU 15507 / 45002



KARADJA 15496 / 45003

TECHNICALS

Wilton 3 shots
 80% wool / 20% PA
 ±9,6mm / 0,38"
 ±7,6mm / 0,30"
 70 cm - 90 cm
 ±222.312
 ±3150 g/m2
 2200 g/m2
 stretched on underlay

Manufacturing process
 Pile yarn composition
 Total height
 Pile height
 Width
 Number of tufts
 Total weight
 Pile weight
 Recommended installation method

70cm - 90cm
 27" - 36"



KARADJA
 15496 / 45003



HADSCHLU
 15507 / 45002



KILIM
 15501 / 45003

KILIM & KARADJA & HADSCHLU

SAN LORENZO stair runner collection

TECHNICALS

Manufacturing process	Wilton 3 shots
Pile yarn composition	80% wool / 20% PA
Total height	± 9,6mm / 0,38"
Pile height	± 7,6mm / 0,30"
Width	70 cm - 90 cm
Number of tufts	± 222.312
Total weight	± 3150 g/m ²
Pile weight	± 2200 g/m ²
Recommended installation method	stretched on underlay

70cm - 90cm
27" - 36"



BOCCHARA 15499 / 45002



BOCCHARA 15499 / 49500

BOCCHARA

BOCCHARA
15499 / 49500

SAN LORENZO stair runner collection



FERAGHAN 15513 / 55006

FERAGHAN 15513 / 52500

MIR 15508 / 52500

MIR 15508 / 55006

TECHNICALS

Wilton 3 shots
 80% wool / 20% PA
 ± 9,6mm / 0,38"
 ± 7,6mm / 0,30"
 70 cm - 90 cm
 ± 222.312
 ± 3150 g/m2
 2200 g/m2
 stretched on underlay

Manufacturing process
 Pile yarn composition
 Total height
 Pile height
 Width
 Number of tufts
 Total weight
 Pile weight
 Recommended installation method

70cm - 90cm
 27" - 36"



MIR & FERAGHAN

FERAGHAN
 15513 / 52500

MIR
 15508 / 52500

SAN LORENZO stair runner collection

TECHNICALS

Manufacturing process	Wilton 3 shots
Pile yarn composition	80% wool / 20% PA
Total height	± 9,6mm / 0,38"
Pile height	± 7,6mm / 0,30"
Width	70 cm - 90 cm
Number of tufts	± 222.312
Total weight	± 3150 g/m ²
Pile weight	± 2200 g/m ²
Recommended installation method	stretched on underlay

70cm - 90cm
27" - 36"



PERSIAN 15518 / 45500



PERSIAN 15518 / 49500



WILLIAM MORRIS 15222 / 49501

PERSIAN & WILLIAM MORRIS

PERSIAN
15518 / 45500

PERSIAN
15518 / 49500

WILLIAM MORRIS
15222 / 49501

SAN LORENZO stair runner collection



SECRET GARDEN 15519 / 49001



SECRET GARDEN 15519 / 49502



SECRET GARDEN 15519 / 49503

TECHNICALS

Wilton 3 shots
 80% wool / 20% PA
 ± 9,6mm / 0,38"
 ± 7,6mm / 0,30"
 70 cm - 90 cm
 ± 222.312
 ± 3150 g/m2
 ± 2200 g/m2
 stretched on underlay

Manufacturing process
 Pile yarn composition
 Total height
 Pile height
 Width
 Number of tufts
 Total weight
 Pile weight
 Recommended installation method

70cm - 90cm
 27" - 36"



SECRET GARDEN
 15519 / 49502



SECRET GARDEN
 15519 / 49001

SECRET GARDEN

This range is still simply sublime and dashing modern, even after 40 years of existence, it is the most fantastic velours on the market ever. A wilton woven process using 80% of pure new wool and 20% nylon. A solid traditional technique with numerous advantages : exceptional comfort and durability.

8 WILTON QUALITIES
SOLID
CUT / LOOP CONSTRUCTIONS
MODERN CLASSICAL APPEAL

PLAIN
stair runner collection

RICHELIEU 9219

TECHNICALS

Manufacturing process

Backing

Pile yarn composition

Total height

Pile height

Total weight

Total pile weight

Number of tufts

Width

Number of colors

Fire resistance

Light fastness

Rubbing fastness

Use

Recommended installation method

Wilton

Cotton / Polyester

80% wool / 20%PA

± 8mm / 0,30"

6mm / 0,24"

± 2265 g/m²

± 1250 g/m²

± 122.100 x2

60cm - 70cm - 90cm

7

Bfl

min 4

min 4

23,32

Stretched on underlay

PLAIN stair runner collection

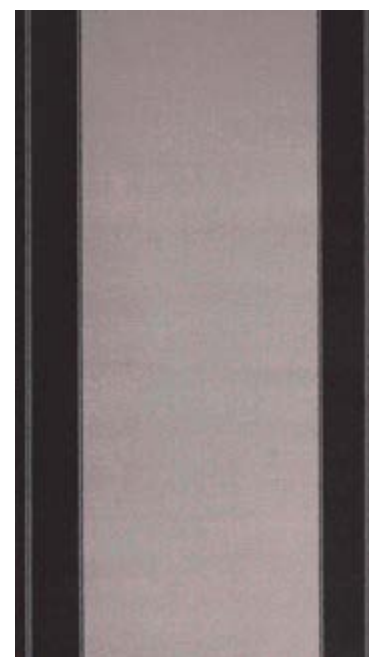
WIDTH	60cm	70cm	90cm
	24"	27"	36"
BORDER WIDTH	11cm	11,5cm	14cm
	4"	5"	6"



RICHELIEU CLASSIC 2011 / 11



RICHELIEU CLASSIC 2011 / 71



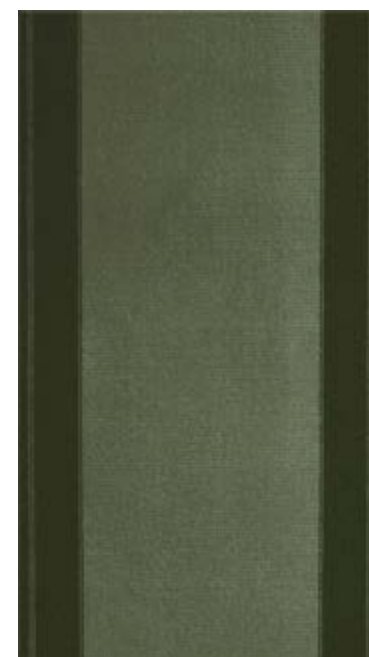
RICHELIEU CLASSIC 2011 / 10



RICHELIEU CLASSIC 2011 / 90



RICHELIEU CLASSIC 2011 / 20



RICHELIEU CLASSIC 2011 / 30



RICHELIEU CLASSIC 2011 / 50



RICHELIEU CLASSIC 2011 / 10



RICHELIEU CLASSIC 2011 / 71

RICHELIEU CLASSIC

RICHELIEU CLASSIC 2011 / 10

PLAIN stair runner collection

120cm / 47" ALSO IN 90cm / 36" / 70cm / 27" / 60cm / 24" WIDTH

RICHELIEU ESCALIER 1002



RICHELIEU ESCALIER 1001



RICHELIEU ESCALIER 1002



RICHELIEU ESCALIER 1502

RICHELIEU ESCALIER 1502

RICHELIEU ESCALIER 3004



RICHELIEU ESCALIER 2001



RICHELIEU ESCALIER 2501



RICHELIEU ESCALIER 3004

TECHNICALS	
Manufacturing process	Wilton
Backing	Cotton / Polyester
Pile yarn composition	80% Wool / 20% PA
Total height	± 8mm
Pile height	± 6mm
Total weight	± 2265 g/m ²
Total pile weight	± 1250 g/m ²
Number of tufts	± 122.100 x2
Width	60cm - 70cm - 90cm
Number of colors	7
Fire resistance	Bfl
Light fastness	min 4
Rubbing fastness	min 4
Use	23,32
Recommended installation method	Stretched on underlay

RICHELIEU ESCALIER 1502

RICHELIEU ESCALIER

PLAIN stair runner collection

TECHNICALS

Manufacturing process	Wilton
Backing	Cotton / Polyester
Pile yarn composition	80% wool / 20%PA
Total height	±8mm / 0,30"
Pile height	6mm / 0,24"
Total weight	±2265 g/m2
Total pile weight	±1250 g/m2
Number of tufts	±122.100 x2
Width	60cm - 70cm - 90cm
Number of colors	7
Fire resistance	Bfl
Light fastness	min 4
Rubbing fastness	min 4
Use	23.32
Recommended installation method	Stretched on underlay

WIDTH	60cm	70cm	90cm	120cm
	24"	27"	36"	

RICHELIEU ESCALIER

RICHELIEU ESCALIER 9219



RICHELIEU ESCALIER 3500



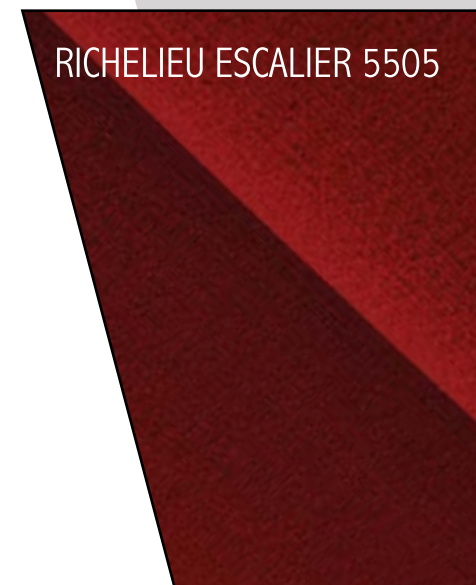
RICHELIEU ESCALIER 5502



RICHELIEU ESCALIER 5505



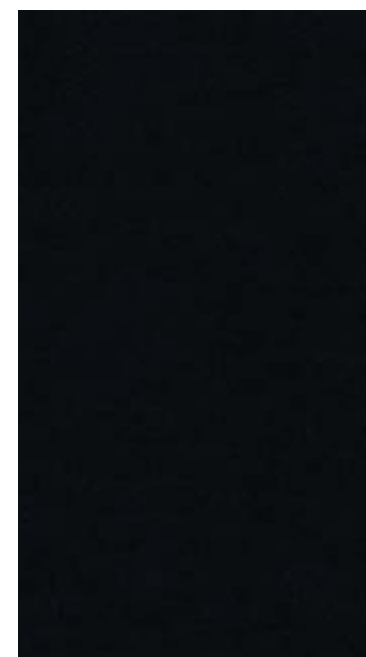
RICHELIEU ESCALIER 3500



RICHELIEU ESCALIER 5505



RICHELIEU ESCALIER 7501



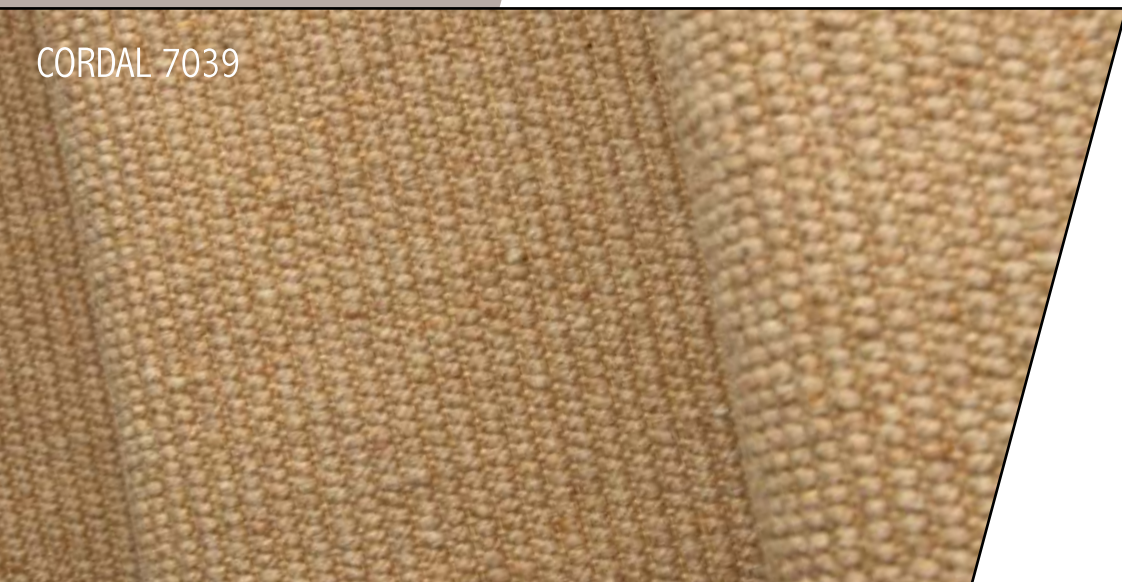
RICHELIEU ESCALIER 9219



RICHELIEU ESCALIER 9802

PLAIN stair runner collection

66cm / 88cm / 132cm WIDTH
26" / 35" / 52"



CORDAL 7039



CORDAL 6001



CORDAL 7038



CORDAL 6001



CORDAL 7039



TECHNICALS

Manufacturing process	Wilton
Backing	Jute
Pile yarn composition	100% Wool
Total height	± 5mm
Pile height	± 3mm
Total weight	± 2345 g/m ²
Total pile weight	± 1020 g/m ²
Number of tufts	± 36750 x2
Width	66cm 88cm 132cm
Number of colors	3
Fire resistance	Bfl
Light fastness	min 4
Rubbing fastness	min 4
Use	23,32
Recommended installation method	Stretched on underlay

CORDAL 6001

CORDAL

TECHNICALS

Manufacturing process
 Backing
 Pile yarn composition
 Total height
 Pile height
 Total weight
 Total pile weight
 Number of tufts
 Width
 Number of colors
 Fire resistance
 Recommended installation method

Wilton
 Jute
 100% Wool
 ± 8mm
 ± 6mm
 ± 2182 g/m²
 ± 1358 g/m²
 ± 127.440 x2
 60cm - 70cm - 90cm
 7
 CfI-S1
 Stretched on underlay

PLAIN stair runner collection

WIDTH 60cm | 70cm | 90cm
 24" | 27" | 36"



ELITE SABLE 19 (10024)



ELITE MARINE 72 (10080)



ELITE VERT 291 (10126)



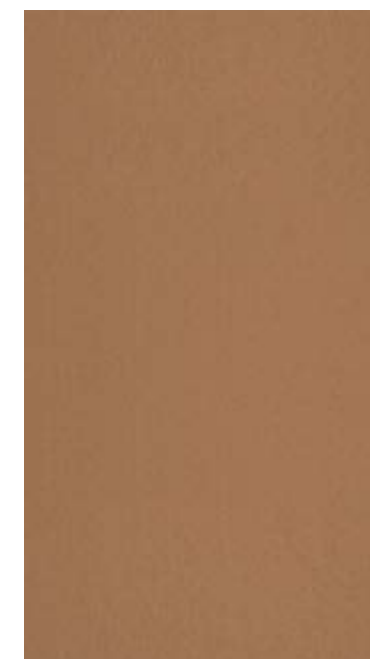
ELITE PRAIRIE 95 (10086)



ELITE BLEU 293 (10127)



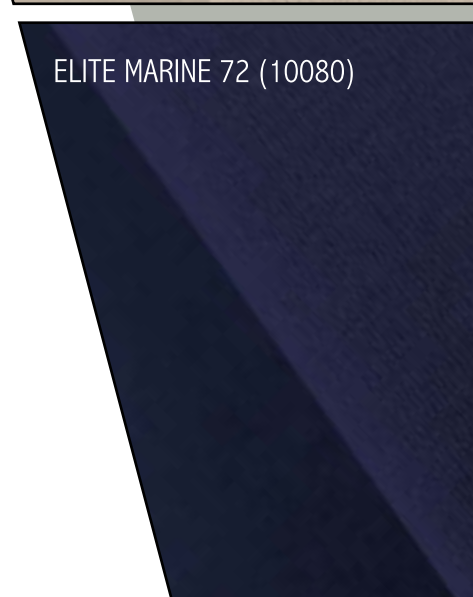
ELITE ROUGE 288 (10124)



ELITE BEIGE 294 (10128)



ELITE SABLE 19 (10024)



ELITE MARINE 72 (10080)

ELITE

ELITE VERT 291 (10126)

PLAIN stair runner collection

90cm	70cm	60cm	WIDTH
36"	27"	24"	
14cm	11,5cm	11cm	BORDER WIDTH
6"	5"	4"	

ELITE FLAMME - NO BORDER 10173

ELITE FLAMME - BORDER 10173



ELITE FLAMME - BORDER 10173



ELITE FLAMME - NO BORDER 10173

Manufacturing proces
Backing
Pile yarn composition
Total height
Pile height
Total weight
Total pile weight
Number of tufts
Width
Number of colors
Fire resistance
Recommended installation method

TECHNICALS

Wilton
Jute
100% Wool
± 8mm
± 6mm
± 2182 g/m2
± 1358 g/m2
± 127.440 x2
60cm - 70cm - 90cm
2
Cfl-S1
Stretched on underlay

ELITE FLAMME (BORDER)

ELITE FLAMME - BORDER 10173

TECHNICALS

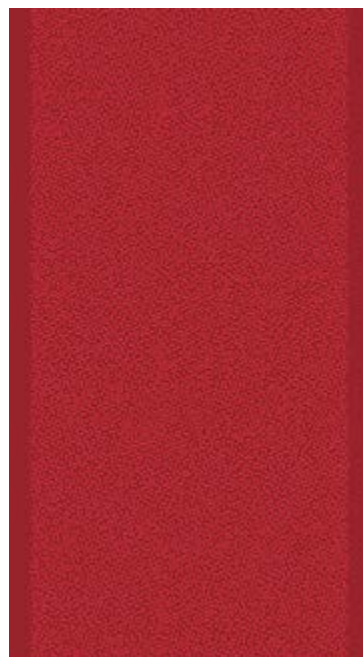
Manufacturing process	Wilton
Backing	Cotton / Polyester
Pile yarn composition	80% Wool / 20% PA
Total height	± 8mm
Width	70cm
Number of colors	5
Fire resistance	Bfl
Light Fastness	min 4
Rubbing fastness	min 4
Use	23,32
Recommended installation method	Stretched on underlay



BEACH 15527 / 1001



BEACH 15527 / 2293



BEACH 15527 / 5505



BEACH 15527 / 3912



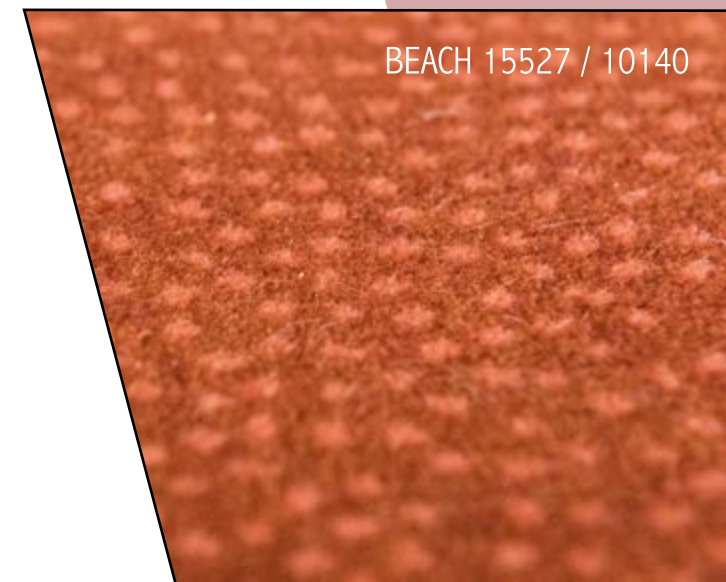
BEACH 15527 / 10140

PLAIN stair runner collection

WIDTH 70cm
27"
BORDER WIDTH 11,5cm
5"



BEACH 15527 / 3912



BEACH 15527 / 10140

BEACH

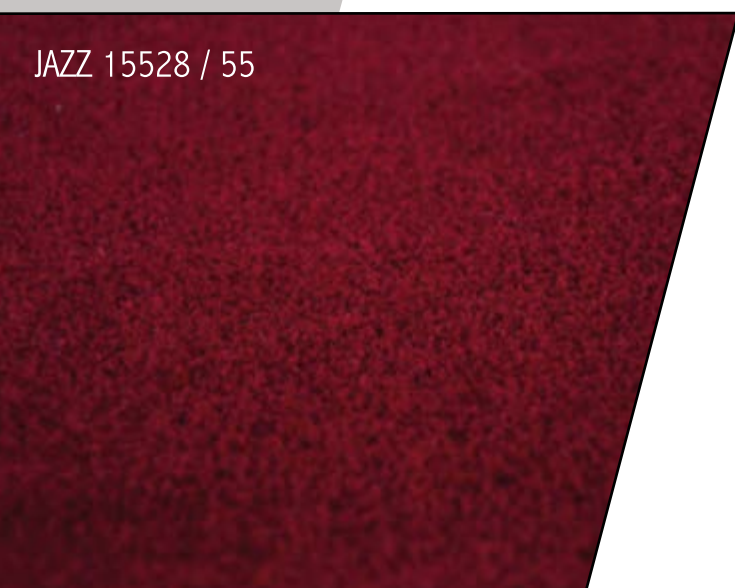
BEACH 15527 / 5505

PLAIN stair runner collection

70cm WIDTH
27"
11,5cm BORDER WIDTH
5"



JAZZ 15528 / 75



JAZZ 15528 / 55



JAZZ 15528 / 15



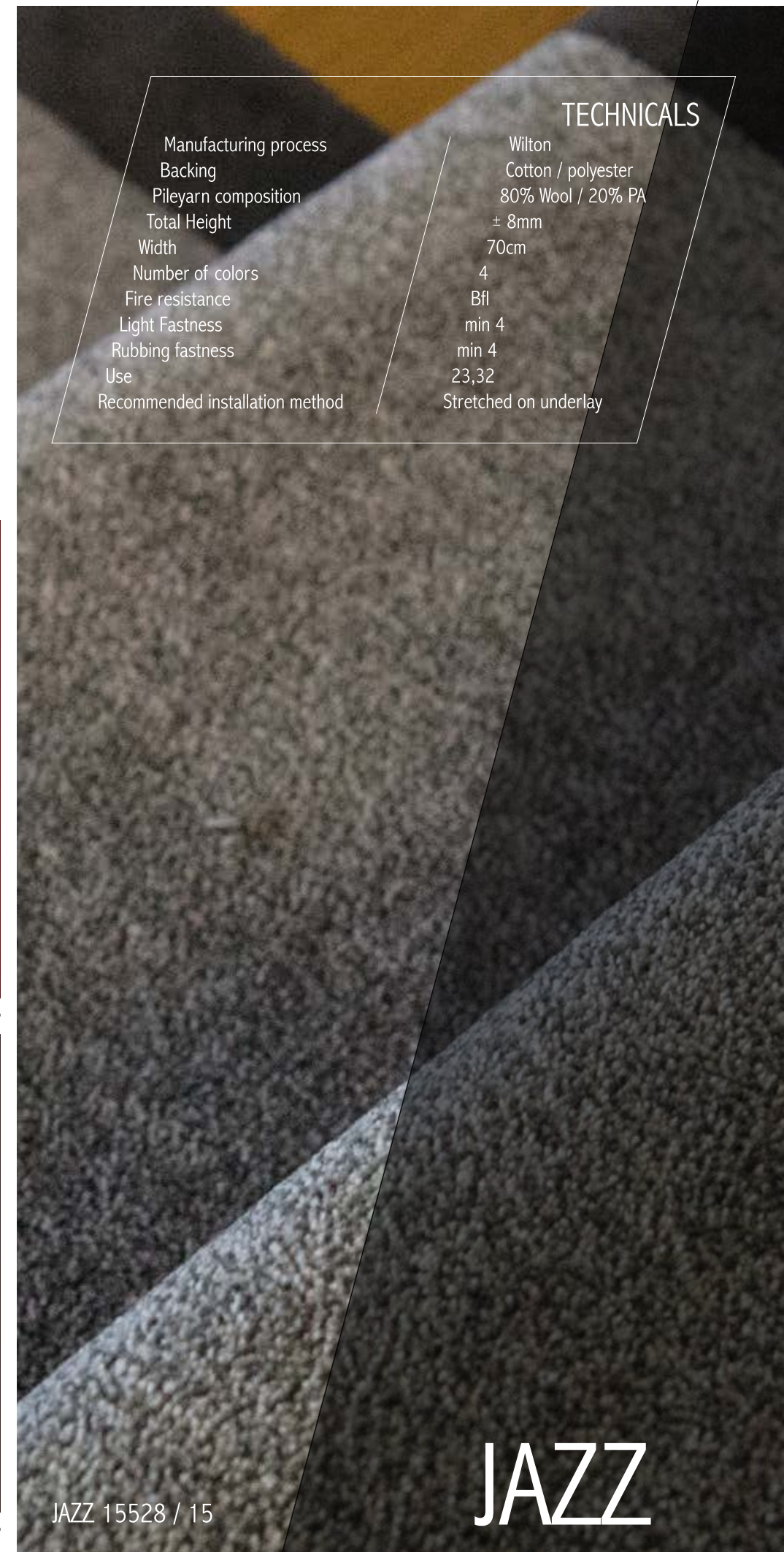
JAZZ 15528 / 55



JAZZ 15528 / 75



JAZZ 15528 / 95



TECHNICALS	
Manufacturing process	Wilton
Backing	Cotton / polyester
Pile yarn composition	80% Wool / 20% PA
Total Height	± 8mm
Width	70cm
Number of colors	4
Fire resistance	Bfl
Light Fastness	min 4
Rubbing fastness	min 4
Use	23,32
Recommended installation method	Stretched on underlay

JAZZ 15528 / 15

JAZZ

THE STRIPES are a collection of beautiful wilton woven stair runners made of a multiple range of colours next to each other. It gives you a feeling of depth.

STRIPES

stair runner collection

MOVE 2006 - 51

7 WILTON QUALITIES
STRIPES
CUT / LOOP CONSTRUCTIONS
MODERN CLASSICAL APPEAL

STRIPES stair runner collection

TECHNICALS

Manufacturing process	Wilton
Backing	Cotton / Jute
Pile yarn composition	Wool
Total height	± 8mm
Pile height	± 6mm
Total weight	± 2140 g/m ²
Total pile weight	± 1240 g/m ²
Number of tufts	± 111.000 x2
Width	70cm
Number of colors	5
Fire resistance	Bfl
Light fastness	min 4
Rubbing fastness	min 4
Use	23,32
Recommended installation method	Stretched on underlay



COLOR FULL 2008 - 15



COLOR FULL 2008 - 51



COLOR FULL 2008 - 72



COLOR FULL 2008 - 56



COLOR FULL 2008 - 77

WIDTH 70cm
27"



COLOR FULL 2008 - 72



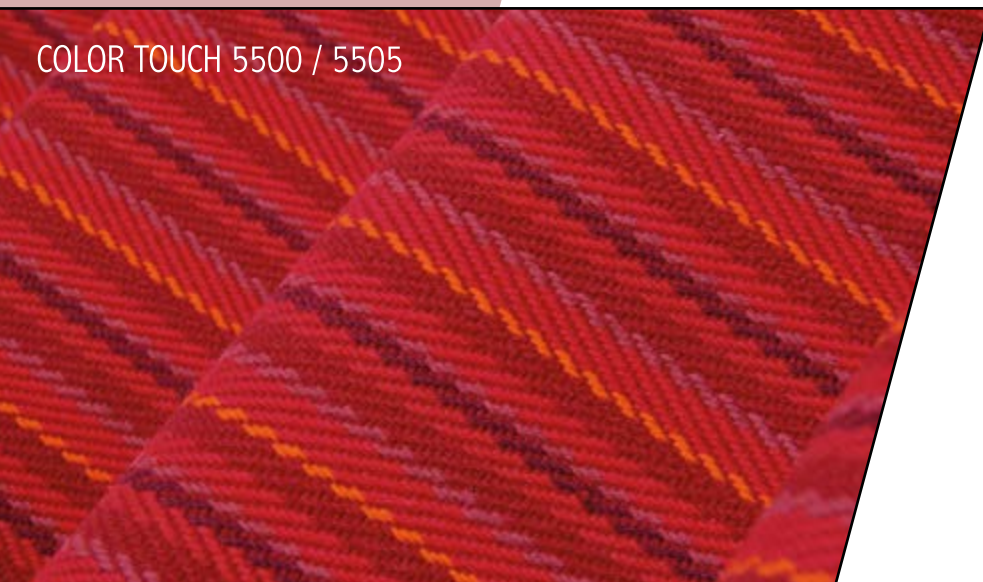
COLOR FULL 2008 - 51

COLOR FULL

COLOR FULL 2008 - 51

STRIPES stair runner collection

71cm-74cm
28"-29" WIDTH



COLOR TOUCH 5500 / 5505



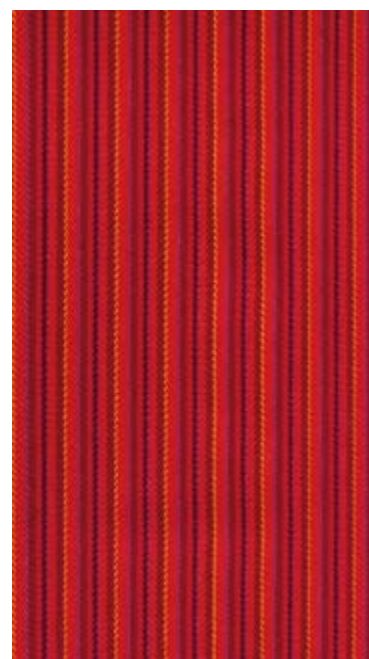
COLOR TOUCH 7000 / 1001



COLOR TOUCH 1500 / 1502



COLOR TOUCH 5000 / 3912



COLOR TOUCH 5500 / 5505



COLOR TOUCH 7000 / 1001



TECHNICALS	
Manufacturing process	Wilton
Backing	Wool
Pile yarn composition	Wool
Total height	± 4mm
Total weight	± 1900 g/m ²
Total pile weight	± 1500 g/m ²
Width	± 71cm - 74cm
Number of colors	4
Fire resistance	Bfl
Light fastness	min 4
Rubbing fastness	min 4
Use	23,32
Stairs	22
Recommended installation method	Glued

COLOR TOUCH 5000 / 3912

COLOR TOUCH

STRIPES stair runner collection

TECHNICALS

Manufacturing process	Wilton 3 shots
Backing	Jute / Cotton
Pile yarn composition	Wool
Total height	± 5,4mm
Pile height	± 3,4mm
Total weight	± 1915 g/m ²
Total pile weight	± 775 g/m ²
Number of tufts	± 111.000 x2
Width	70cm
Number of colors	3
Fire resistance	Bfl
Light fastness	min 4
Rubbing fastness	min 4
Use	22,31
Recommended installation method	Stretched on underlay

WIDTH 70cm
27"



COLOR LOOP 2006 / 15



COLOR LOOP 2006 / 72



COLOR LOOP 2006 / 51



COLOR LOOP 2006 / 56



COLOR LOOP 2006 / 15



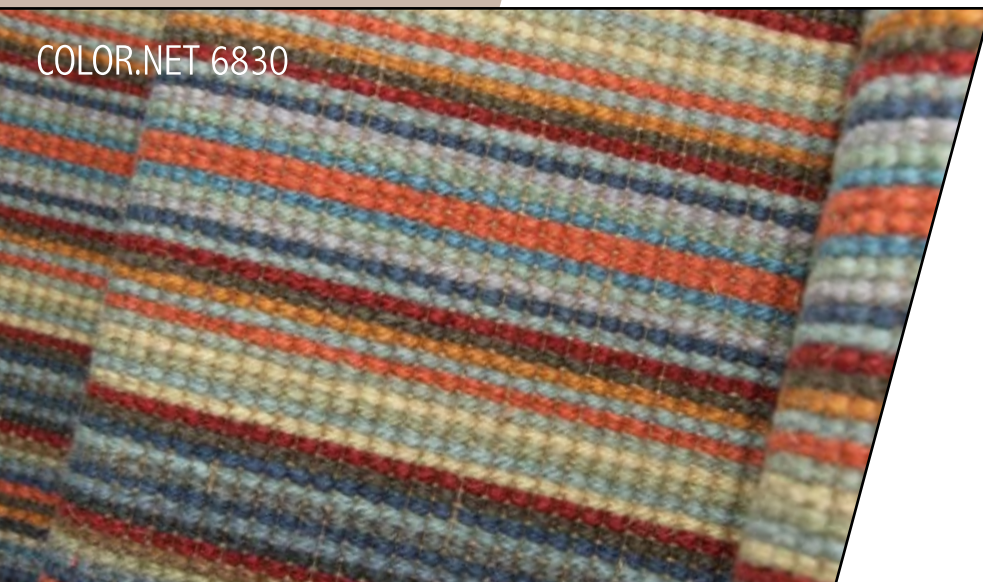
COLOR LOOP 2006 / 51

COLOR LOOP

COLOR LOOP 2006 / 51

STRIPES stair runner collection

66cm / 88cm / 132cm WIDTH
26" / 35" / 52"



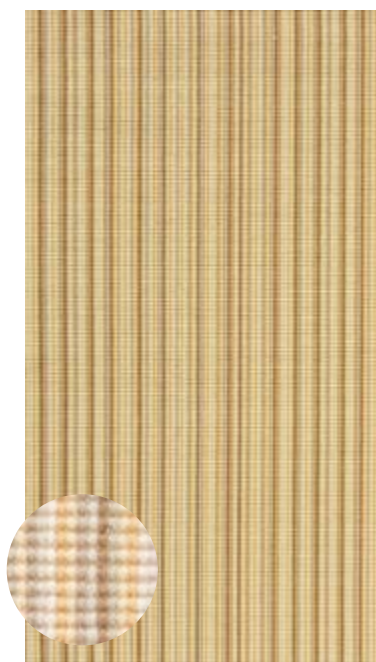
COLOR.NET 6830



COLOR.NET 6880



COLOR.NET 6830



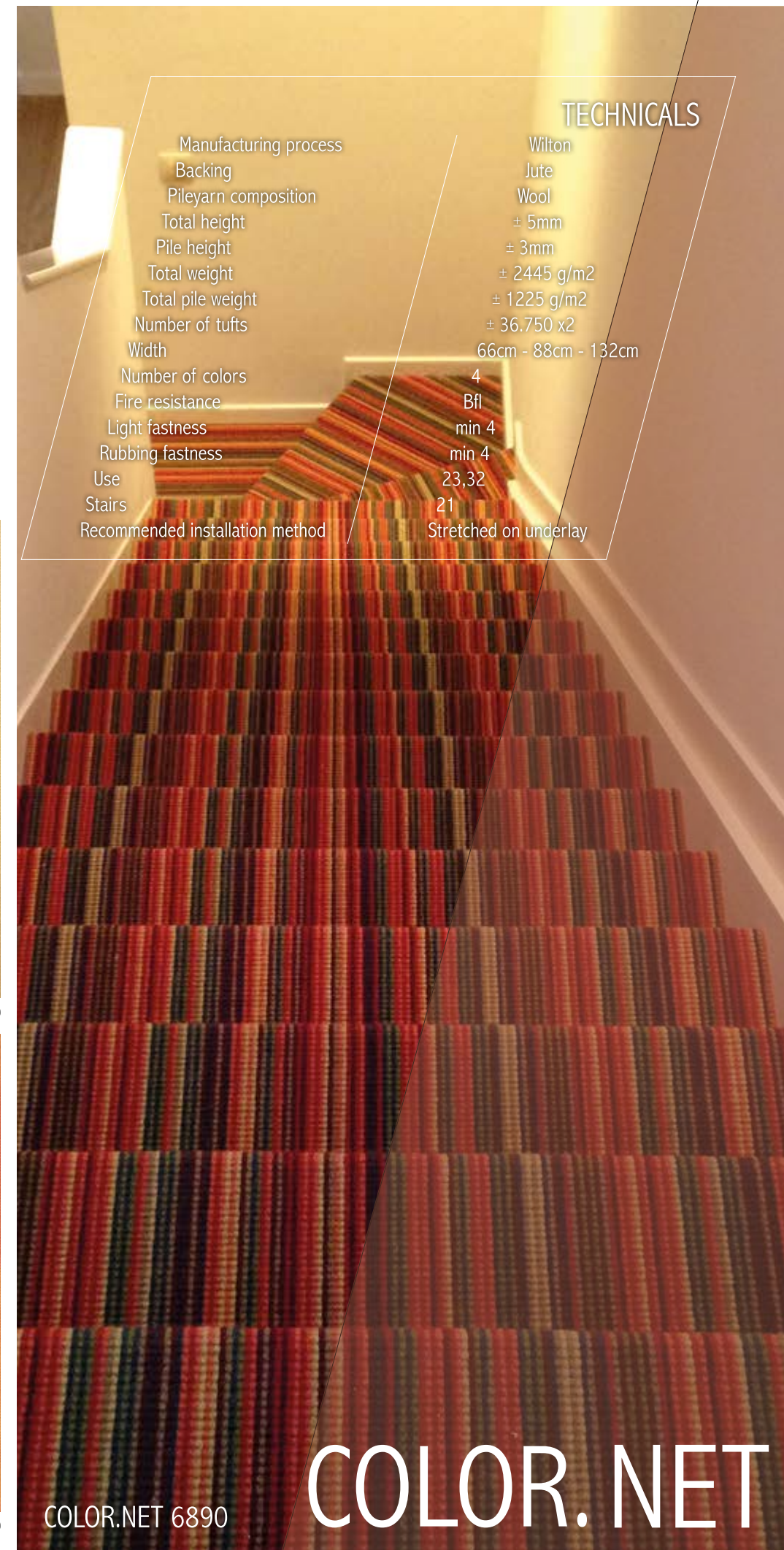
COLOR.NET 6850



COLOR.NET 6880



COLOR.NET 6890



TECHNICALS	
Manufacturing process	Wilton
Backing	Jute
Pile yarn composition	Wool
Total height	± 5mm
Pile height	± 3mm
Total weight	± 2445 g/m ²
Total pile weight	± 1225 g/m ²
Number of tufts	± 36.750 x2
Width	66cm - 88cm - 132cm
Number of colors	4
Fire resistance	Bfl
Light fastness	min 4
Rubbing fastness	min 4
Use	23,32
Stairs	21
Recommended installation method	Stretched on underlay

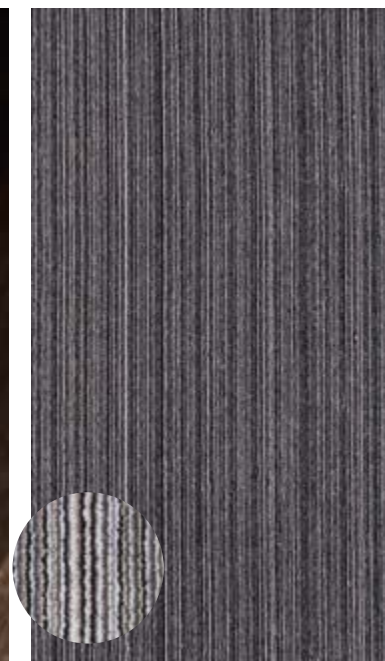
COLOR.NET

COLOR.NET 6890

STRIPES stair runner collection

TECHNICALS

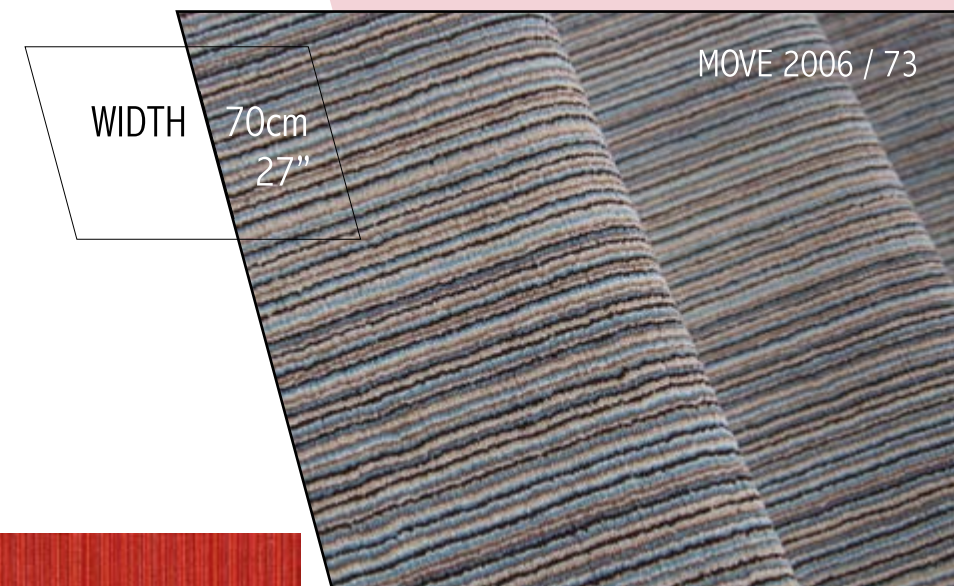
Manufacturing process	Wilton
Backing	Jute cotton
Pile yarn composition	80% Wool / 20% PA
Total height	± 8,4mm
Pile height	± 6,4mm
Total weight	± 2280 g/m2
Total pile weight	± 1250 g/m2
Number of tufts	± 111.000 x2
Width	70cm
Number of colors	9
Fire resistance	Bfl
Light fastness	min 4
Rubbing fastness	min 4
Use	23,32
Recommended installation method	Stretched on underlay



MOVE 2006 / 15



MOVE 2006 / 16



MOVE 2006 / 73



MOVE 2006 / 51



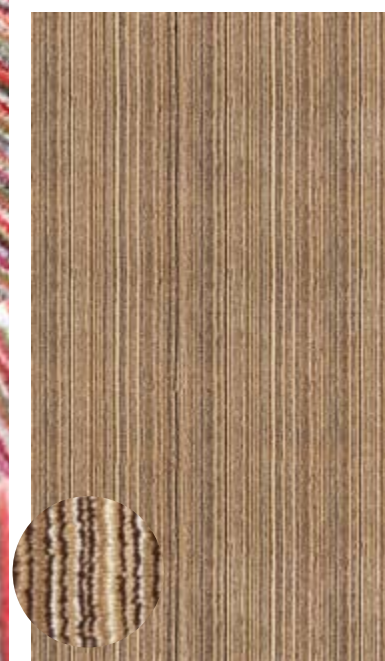
MOVE 2006 / 52



MOVE 2006 / 56



MOVE 2006 / 15



MOVE 2006 / 71



MOVE 2006 / 73



MOVE 2006 / 75



MOVE 2010 / 90

MOVE

MOVE 2006 / 51

STRIPES stair runner collection



MOVE BORDER 2007 / 16

70cm WIDTH
27"
11,5cm BORDER WIDTH
5"



MOVE BORDER 2007 / 16



MOVE BORDER 2007 / 15



MOVE BORDER 2007 / 75



MOVE BORDER 2007 / 56



MOVE BORDER 2007 / 52



MOVE BORDER 2007 / 51



MOVE BORDER 2007 / 90



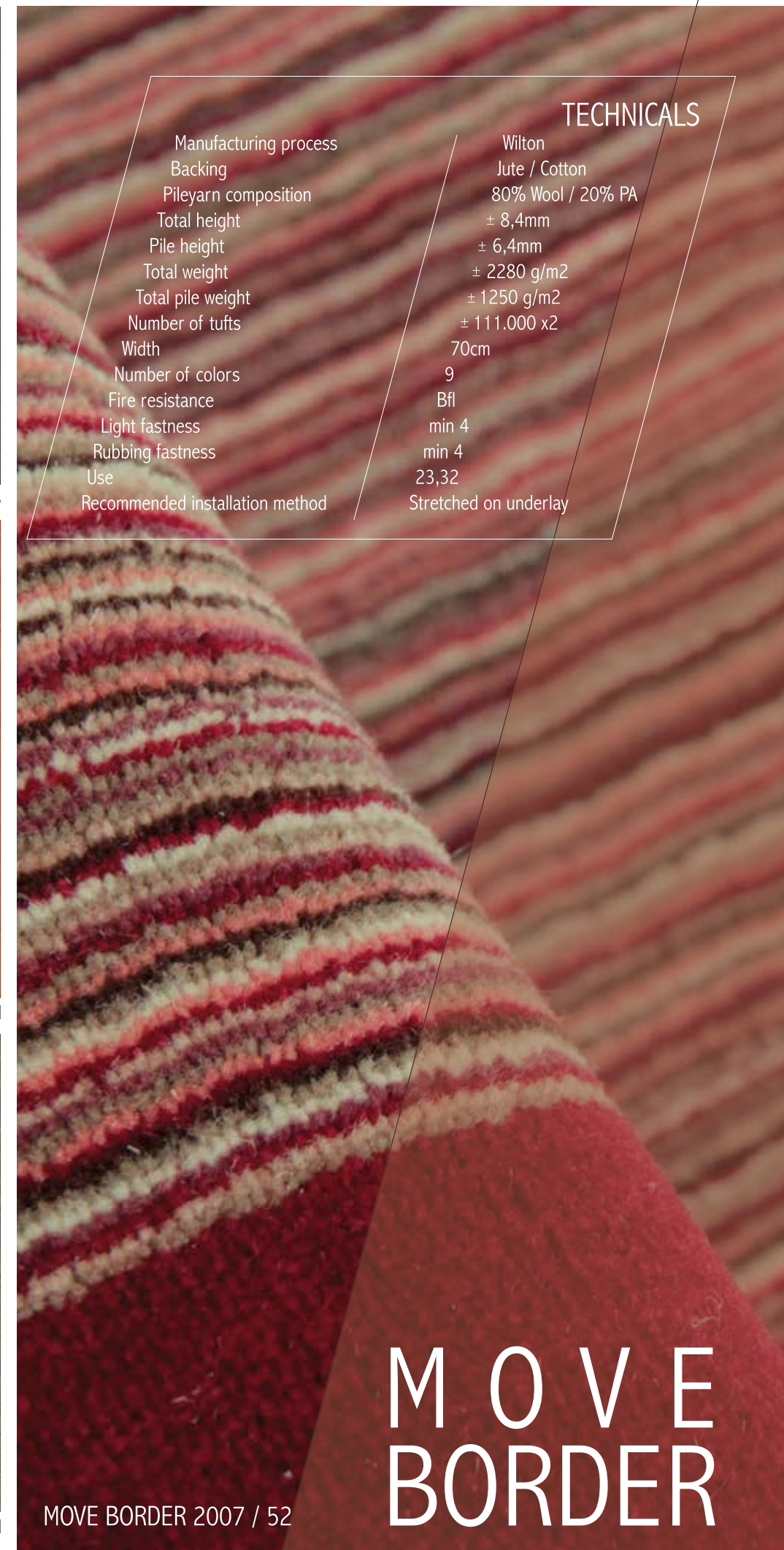
MOVE BORDER 2007 / 75



MOVE BORDER 2007 / 73



MOVE BORDER 2007 / 71



TECHNICALS	
Manufacturing process	Wilton
Backing	Jute / Cotton
Pile yarn composition	80% Wool / 20% PA
Total height	± 8,4mm
Pile height	± 6,4mm
Total weight	± 2280 g/m2
Total pile weight	± 1250 g/m2
Number of tufts	± 111.000 x2
Width	70cm
Number of colors	9
Fire resistance	Bfl
Light fastness	min 4
Rubbing fastness	min 4
Use	23,32
Recommended installation method	Stretched on underlay

MOVE BORDER

MOVE BORDER 2007 / 52

STRIPES stair runner collection

TECHNICALS

Manufacturing proces	Wilton
Backing	Cotton / Polyester
Pile yarn composition	80% Wool / 20% PA
Total height	± 8mm
Width	70cm
Number of colors	2
Fire resistance	Bfl
Light fastness	min 4
Rubbing fastness	min 4
Use	23,32
Recommended installation method	Stretched on underlay

WIDTH 70cm
27"



MISSOURI 15529 / 15



MISSOURI 15529 / 51



MISSOURI 15529 / 51



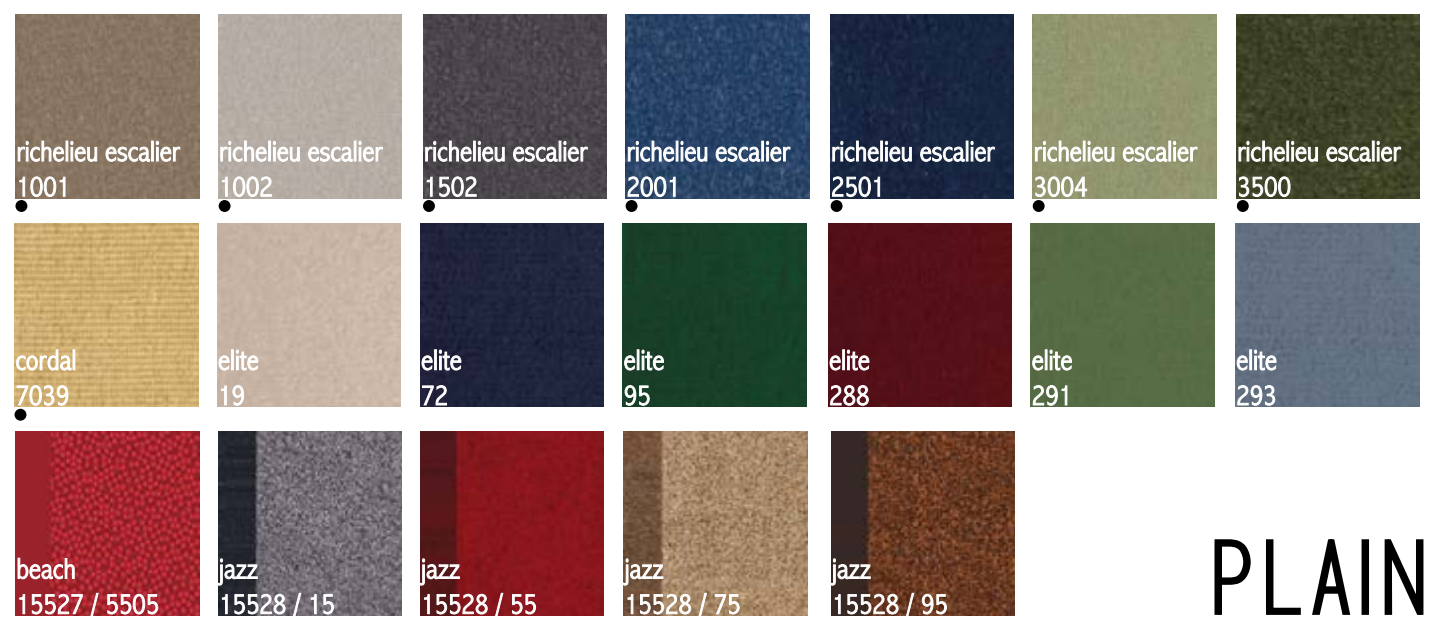
MISSOURI 15529 / 51

MISSOURI

MISSOURI 15529 / 51



SAN LORENZO



PLAIN



• Consult our website or sample case "les Tissés" for compatible broadloom.

STRIPES