

eurocol surface finishing

liquiddesign

INNOVATIVE, FLEXIBLE LIQUID FLOOR

WITH A NATURAL LOOK & FEEL



the strong connection

eurocol

INNOVATIVE, FLEXIBLE LIQUID FLOOR WITH A NATURAL LOOK & FEEL

Forbo Eurocol is always working on better and new products to be able to offer a broad and varied range of products. This brochure will introduce you to LiquidDesign. An innovative, flexible liquid floor with a natural look & feel and great aesthetic qualities. A beautiful and durable floor finishing with continued flexible properties, for a great variety of applications. Available in more than thirty attractive colours.



INNOVATIVE LIQUIDDESIGN: NOT JUST ANY LIQUID FLOOR

LiquidDesign clearly stands out from other liquid floors, like PU or epoxy. This innovative Eurocol liquid floor offers a completely different experience thanks to its permanently flexible properties, natural look & feel and aesthetic qualities. It is the result of a balanced mix of natural components: cork, linseed oil and biopolymer binding agent. Moreover, these natural materials are renewable, and therefore environmentally friendly.

Warm and comfortable

With its warm, comfortable look, LiquidDesign is not meant for 'cold industrial' applications like warehouses, production halls, parking decks, etcetera. Compared with PU and epoxy liquid floors, LiquidDesign is an aesthetic and very user-friendly finishing floor, for example for hotels, restaurants, offices, stores, houses, (company) canteens and many more. The range of more than thirty base colours makes LiquidDesign even more appealing, in addition to its flexible properties.

Pleasant processing properties

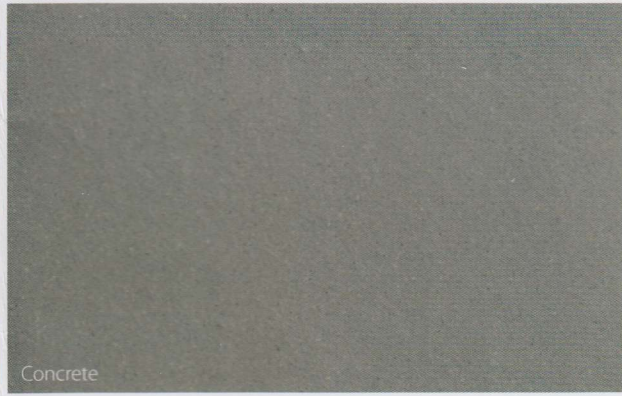
LiquidDesign is particularly easy to process. This flexible liquid floor can be applied and finished fast and effortlessly to create a beautiful even surface. After drying the floor is finished with a 2-component topcoat for a naturally matted look. The result is entirely seamless, even if the room has an unusual shape, or if there are pillars in the work, passageways and tricky corners. The 2-component topcoat is easy to apply. LiquidDesign does not contain any plasticizers and is low-emission. Forbo Eurocol advises to always level the floor first, even though LiquidDesign is extremely forgiving for minor flaws. These will be levelled from skirting board to skirting board during the application. The floor is flexible yet sturdy, which means that LiquidDesign is quite robust.

Benefits

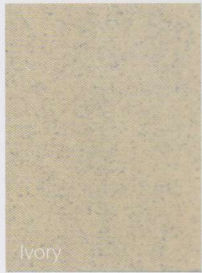
- warm, aesthetic and permanently flexible liquid floor
- fast and easy to apply
- seamless
- 1 coat lacquer finish without primer
- composed from natural, renewable materials
- LiquidDesign is flexible yet sturdy and wear resistant, dirt resistant and low-emission.



Cork



Concrete



Ivory



Pearl



Blossom



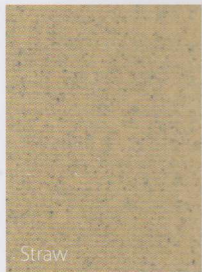
Silver



Mint



Diamond



Straw



Shell



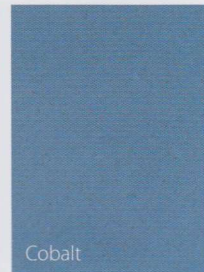
Violet



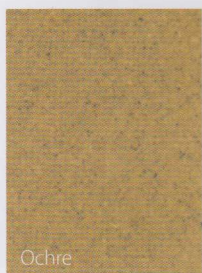
Ashes



Turquoise



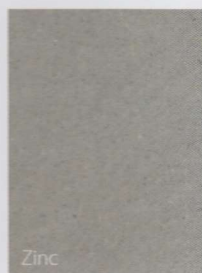
Cobalt



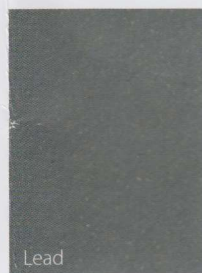
Ochre



Sand



Zinc



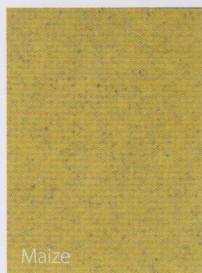
Lead



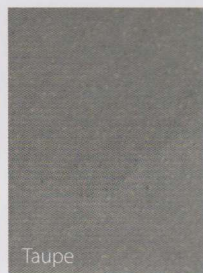
Lagoon



Ruby



Maize



Taupe



Bark



Steel



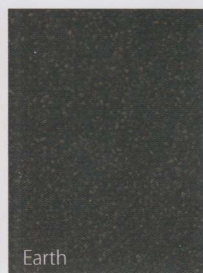
Emerald



Fire



Corn



Earth



Charcoal



Navy



Tundra



Brick

The colour values shown may differ slightly from when doing the application.

Technical properties

Basis	2-component liquid mass with a balanced mix of natural components i.e. cork, linseed oil and a biopolymer binding agent. Component A : B 11 : 4
Specific weight	0.95 kg/l.
Spreading capacity	2 - 2.5 kg/m ² .
Pot-life	Approx. 30 minutes (depending on climatic circumstances).
Accessibility	After approx. 12 hrs.
Drying time	May be finished after at least 12 hours; fully hardened after 8 days*
Coat	2 - 2.5 mm max.
Compressive strength	Approx. 20 N/mm ² .
Thermal resistance	0.027 m ² x K/W.
Shore DA	pprox. 45.
Colour fastness	≥ 6 Blue scale. EN-ISO-105-B2:2014
Slip resistance	DS: ≥ 0.45 EN 13893:2002
Slip test	SRT pendulum wet: between 55 - 70, dry: > 25. BS7976-2+A1:2013
Fire resistance	Bfl-S1. EN 13501-1:2007+A1:2009
Person charge	< 0.5 kV. EN 1815:2016
Castor chair resistance	Suitable for use underneath castor chairs. EN 425:2002
Storage:	Store cool and free from frost (between 10° - 30 °C). Not in direct sunlight!
Shelf life	9 months in unopened packaging.
Frost-sensitive	es.
Flammability	Non-flammable.
Hazard classification	None.
Safety sheet	Available upon request.

Working conditions

Desired room temperature	: 15° - 25 °C
Temperature for material and subfloor	: min. 15° - max. 20 °C
Relative humidity	: 50 - 70%

Shipping unit

Component A: 11 kg environmental bucket (PE).
Component B: 4 kg environmental jerry can (PE).

* The levels specified are lab values, which, given the great variation in climatological conditions, composition of the subfloor and thickness of the coats, merely serve as an indication.

Working conditions

Desired room temperature:	15° - 25 °C
Temperature for material and subfloor:	min. 15° - max. 20 °C
Relative humidity:	50 - 70%

Shipping Unit

Component A: Environmentally sound bucket (PE-based) of 11 kg per bucket.
Component B: Environmentally sound jerry can (PE-based) of 4 kg per can.

Deutschland

Forbo Eurocol Deutschland GmbH
August-Röbling-Str. 2
D-99091 Erfurt
Phone +49 361 730 41 0
Fax +49 361 730 41 91

Nederland

Forbo Eurocol Nederland B.V.
Industrieweg 1-2
1520 AC Wormerveer
Phone +31 75 6271600
Fax +31 75 6283564

Eurocol is part of the Forbo Group

Forbo