



STAIRRODS
(UK) Ltd

CONSETT, ENGLAND
Est 1984



Luxury Carpet Accessories



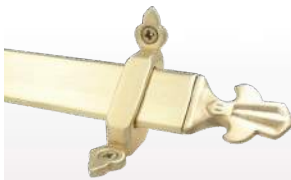
1



Royale



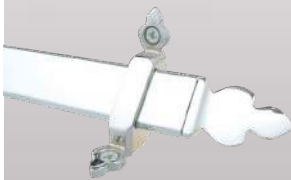
Vue Polished Brass



Louis Satin Brass



Beaumont Antique Brass



Beaumont Chrome

The Royale range of stairrods are triangular brass stair rods in the traditional style, designed specifically to give your staircase a finishing touch that will get noticed.

Suitable for either runner stair carpets or fully fitted, the Royale's are made to measure and will give any stair case an imposing, classical look.

The Royale range are available in the following options:

Choice of finials: Louis, Beaumont and Vue.

Choice of finishes: Antique Brass, Antique Bronze, Polished Brass, Satin Brass, Chrome, Brushed Chrome, Polished Nickel, Satin Nickel, Pewter and Black.



Louis Satin Nickel



Beaumont Pewter



Vue Black

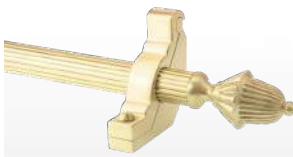




Eastern Promise



Cairo Polished Brass Plain



Dubai Satin Brass Reeded



Dune Antique Brass Spiral



Dubai Antique Bronze Plain



Cairo Black Spiral



Dubai Pewter Plain



Dune Chrome Reeded



Cairo Brushed Chrome Spiral



Dune Polished Nickel Plain



Dune Satin Nickel Reeded

Eastern Promise are heavy gauge hollow stair rods in 5/8" (16mm) diameter and have a range of imposing finials available. Perfect for a grand staircase but equally at home on a standard staircase.

With the various combinations of rod and finial style you can achieve the perfect finish for your staircase.

The Eastern Promise range are available in the following options:

Choice of finials: Dubai, Cairo and Dune
Choice of finishes: Antique Brass, Antique Bronze, Polished Brass, Satin Brass, Chrome, Brushed Chrome, Polished Nickel, Satin Nickel, Pewter and Black.

Choice of rod type: Plain, Reeded or Spiral

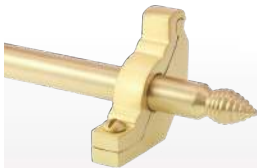




Premier Stair Rods



Balmoral Polished Brass



Chatsworth Satin Brass



Hanover Antique Brass



Windsor Antique Bronze



Lancaster Black



Hanover Pewter



Windsor Chrome



Woburn Brushed Chrome



Balmoral Polished Nickel



Chatsworth Satin Nickel

We are confident our solid core Premier range of stair rods are the finest available anywhere in the world. Our Premier range stair rods are the epitome of quality and style, they are manufactured using traditional methods, the finial is lathed onto the rods meaning every rod is one piece, made to measure and unique. The rods are then polished and lacquered to the highest standard.

Premier Range stair rods come with the following options.

Six finials: Hanover, Lancaster, Windsor, Chatsworth, Balmoral and Woburn.

Three diameters: 12.5mm - 1/2", 16mm - 5/8" and 19mm - 3/4" (The Hanover is only available in the 12.5mm - 1/2" diameter)

Ten finishes: Antique Brass, Antique Bronze, Polished Brass, Satin Brass, Chrome, Brushed Chrome, Polished Nickel, Satin Nickel, Pewter and Black.





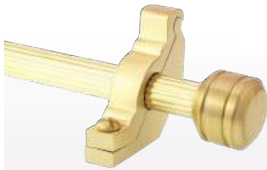
Vision

The Vision stair rods feature modern finial designs. The rods are heavy gauge hollow 1/2" - 12.5mm diameter tube with a choice of Sphere, Piston and Arrow finials. They were designed with an engineered look to complement contemporary stair cases and carpet designs. They are a great choice for those looking for something different to the norm.

The Vision range are available in the following options:
 Choice of finials: Arrow, Sphere & Piston
 Choice of finishes: Antique Brass, Antique Bronze, Polished Brass, Satin Brass, Chrome, Brushed Chrome, Polished Nickel, Satin Nickel, Pewter and Black.



Arrow Polished Brass Plain



Piston Satin Brass Reeded



Sphere Antique Brass Spiral



Piston Antique Bronze Plain



Arrow Black Plain



Piston Pewter Spiral



Sphere Chrome Reeded



Arrow Brushed Chrome Spiral



Sphere Polished Nickel Plain



Arrow Satin Nickel Reeded





Crystal



Amber Polished Brass Plain



Rainbow Satin Brass Rееded



Rose Antique Brass Spiral



Sky Antique Bronze Plain



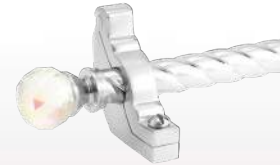
Rainbow Black Plain



Amber Pewter Spiral



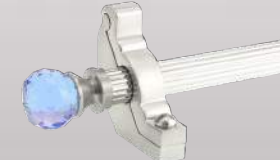
Amber Chrome Rееded



Rainbow Brushed Chrome Spiral



Rose Polished Nickel Plain



Sky Satin Nickel Rееded

Our Crystal rods feature a finely cut crystal which catches the light and creates a dramatic and quite unique decorative effect.

The rod itself is tubular and 1/2" (12.5mm) diameter.

All finial and rod colours can be mixed and matched. As an example, matching an amber crystal with an antique brass rod gives a period look, while a blue crystal on a satin nickel rod creates a modern, stylish look.

Crystal Range stair rods come with the following options:

Choice of finials: Rose (pink), Amber (yellow), Rainbow (clear) and Sky (blue)

Choice of finishes: Antique Brass, Antique Bronze, Polished Brass, Satin Brass, Chrome, Brushed Chrome, Polished Nickel, Satin Nickel, Pewter and Black.

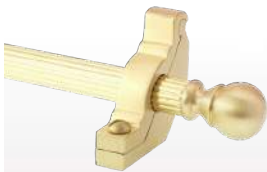




Country



Bordeaux Polished Brass Plain



Balladeer Satin Brass Reeded



Arran Antique Brass Spiral



Sherwood Antique Bronze Plain



Sherwood Black Plain



Arran Pewter Spiral



Arran Chrome Reeded



Balladeer Brushed Chrome Spiral



Bordeaux Polished Nickel Plain



Sherwood Satin Nickel Reeded

Our Country Range offers a wealth of options. Manufactured using traditional methods they combine the quality of brass with versatility and style. Designed for a range of applications our Country range stair rods are suitable for both fully fitted and runner carpets in locations ranging from grand hotels to country cottages.

Country Range Stair Rods come with the following options:

Choice of finials: Sherwood, Balladeer, Bordeaux and Arran

Choice of diameters: 12.5mm - 1/2" and 16mm - 5/8"

Choice of finishes: Antique Brass, Antique Bronze, Polished Brass, Satin Brass, Chrome, Brushed Chrome, Polished Nickel, Satin Nickel, Pewter, and Black.

Choice of rod type: Plain, Reeded or Spiral.





Tudor

Our Tudor range stair rods capture the style of classical wooden stair rods.

These stair rods are made from the finest hardwood and are available in light oak or dark oak finishes. Tudor range stair rods come with solid brass tips and elegant brackets, making them a stylish alternative to our solid brass stair rods ranges.

The hard wood we use will vary in grain pattern and shade.

Tudor Range Stair Rods come with the following options:

Choice of wood finish: Light or Dark

Choice of bracket and end cap finish: Antique Brass, Antique Bronze, Polished Brass, Satin Brass, Chrome, Brushed Chrome, Polished Nickel, Satin Nickel, Pewter and Black.



Light Brass



Dark Satin Brass



Light Antique Brass



Dark Chrome



Light Satin Nickel



Dark Pewter



Light Black





Blacksmith

Our Blacksmith range of wrought iron stair rods have been designed by award winning Northumbrian Blacksmith Rodney Brittain. Using traditional hot metalwork techniques, he has created a simplistic design that compliments a variety of interiors from rustic period properties to modern town houses.

The rods are made from 1/2" (12mm) solid steel, individually beaten into shape and then given a protective coating to prevent rust. Ideal for runners and fitted carpets.

Blacksmith Range stair rods come with the following options:

Choice of finials: Flat, Ball and Spear.

Available in stock lengths of 24" (60.9cm) to 48" (121.9cm) in 2" (5cm) increments.



Ball



Flat



Spear





Jubilee

Launched to celebrate the Queen's Jubilee in 2012, these rods look great and are ideal for retro fitting as they can be easily cut down to match the width of an existing carpet.

To save fitting time, the finials are already attached to the brackets.

Brackets can easily accommodate underlay and gripper, unlike other budget rods sold online.

The Jubilee range are hollow 3/8" (9mm) diameter stair rods and are available in a selection of six finishes.

These are: Brass, Antique Brass, Satin Nickel, Chrome, Pewter, Black.



Brass



Antique Brass



Black



Chrome



Satin Nickel



Pewter





Homepride

Homepride stair rods provide a quick and easy way to add style to your stairs.

These rods are anodised hollow aluminium and are perfect for a retro fit to an existing stair carpet.

If desired, the rod, brackets and acorn finishes can be mixed and matched. For example, a black rod with brass acorns can be specified.

Homepride stair rods can be supplied with one acorn loose so they can be cut down. The acorn then pushes into place.

Available colours: Brass, Bronze, Black, Chrome, Satin Nickel and Pewter.



Brass



Bronze



Black



Chrome



Satin Nickel



Pewter





Easyrod

Easyrods are part of our "Easy" range of products - Easybind, Easystuds and now Easyrods.

They are anodized hollow 3/8" (9mm) diameter stair rods. Which are a quick and cost effective way of enhancing your stairs and hallways.

Discrete in design the Easyrod will blend in perfectly with either a minimalist or traditional interior. Perfect for retro fitting.

It doesn't matter how deep the carpet pile is, the universal Easyrods bracket will fit.



Brass



Bronze



Chrome



Black

Easyrods are and are available in brass, bronze, black and chrome finishes.

Available length: 30" (76cm) to fit carpets up to 27" (69cm)

Longer lengths are available.





Stargrip

Stargrip stair rods offer a unique way to fix carpet to the stair.

The revolutionary design of these stair rods enables them to double as a means of installation while also providing the elegance of brass stair rods on your stair case.

The profile of these brass stair rods enables them to act as a form of gripper. The rods are screwed into the stair case, tightening and securing the carpet in the process. An adhesive inlay that conceals the fixings completing the stair rods, giving them a smart, tidy finish.

Available colours: Brass, Bronze, Chrome and Black.
Available in lengths up to 200cm (78").



Brass



Bronze

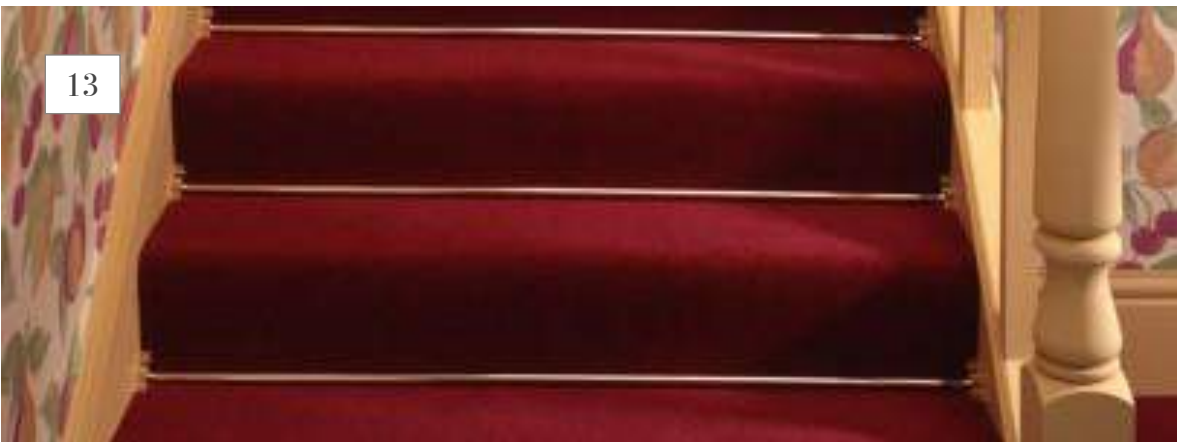


Chrome



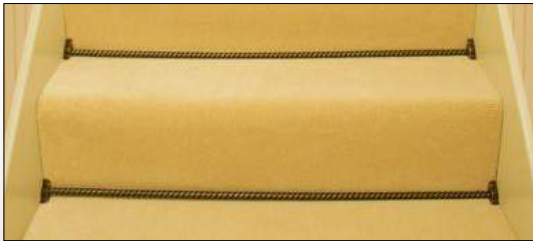
Black





Rods for Fully Fitted Carpets

It is a frequent assumption that stair rods are only available for runner carpets. However, if your stair carpet is fully fitted, it is possible to have stair rods



Side Fix

We can supply our Premier, Country and Homepride rods with Side fix brackets. The side fix bracket is not suitable for stairs with winders, because it is difficult to fix the brackets to the wall as the stair turns due to the wall not being at 90 degrees to the step. The front fix is an option here.



Front Fix

Our Royale, Eastern Promise, Premier, Country, Crystal, Tudor and Homepride rods can be supplied with a front fix bracket. This allows you to have a stair rod with a decorative finial on a fully fitted carpet.



Side/Hinged Fix

We can even cater for stairs with both runner and fully fitted carpet on the same step! Our Eastern Promise, Premier, Country, Crystal and Vision rods can be supplied with one Side Fix and one Hinged Bracket.



Polished Brass

Victorian Stair Clips

In Victorian times stair clips were a popular and fashionable accessory, however modern fitting methods sadly consigned them to history.



Satin Nickel



Satin Brass

At Stair Rods UK, we have revived this attractive product. Our stair clips are solid brass and we use traditional manufacturing methods to give them quality and authenticity. They will recreate the look of yesteryear and add a distinctive touch to your stairs.



Pewter



Antique Brass

Victorian Stair Clips are available in the following finishes: Polished Brass, Antique Brass, Satin Brass, Satin Nickel, Pewter, Black, Chrome.



Black



Chrome

