



STAIRRODS
(UK) Ltd

CONSETT, ENGLAND
Est 1984



Luxury Carpet Accessories

Rods Trims & Shims



1



Royale



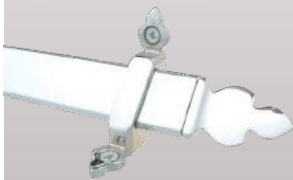
Vue Polished Brass



Louis Satin Brass



Beaumont Antique Brass



Beaumont Chrome

The Royale range of stairrods are triangular brass stair rods in the traditional style, designed specifically to give your staircase a finishing touch that will get noticed.

Suitable for either runner stair carpets or fully fitted, the Royale's are made to measure and will give any stair case an imposing, classical look.

The Royale range are available in the following options:

Choice of finials: Louis, Beaumont and Vue.

Choice of finishes: Antique Brass, Antique Bronze, Polished Brass, Satin Brass, Chrome, Brushed Chrome, Polished Nickel, Satin Nickel, Pewter and Black.



Louis Satin Nickel



Beaumont Pewter



Vue Black

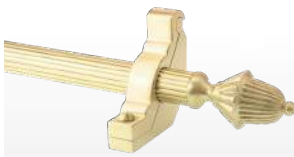




Eastern Promise



Cairo Polished Brass Plain



Dubai Satin Brass Reeded



Dune Antique Brass Spiral



Dubai Antique Bronze Plain



Cairo Black Spiral



Dubai Pewter Plain



Dune Chrome Reeded



Cairo Brushed Chrome Spiral



Dune Polished Nickel Plain



Dune Satin Nickel Reeded

Eastern Promise are heavy gauge hollow stair rods in 5/8" (16mm) diameter and have a range of imposing finials available. Perfect for a grand staircase but equally at home on a standard staircase.

With the various combinations of rod and finial style you can achieve the perfect finish for your staircase.

The Eastern Promise range are available in the following options:

Choice of finials: Dubai, Cairo and Dune
Choice of finishes: Antique Brass, Antique Bronze, Polished Brass, Satin Brass, Chrome, Brushed Chrome, Polished Nickel, Satin Nickel, Pewter and Black.

Choice of rod type: Plain, Reeded or Spiral





Premier Stair Rods

We are confident our solid core Premier range of stair rods are the finest available anywhere in the world. Our Premier range stair rods are the epitome of quality and style, they are manufactured using traditional methods, the finial is lathed onto the rods meaning every rod is one piece, made to measure and unique. The rods are then polished and lacquered to the highest standard.

Premier Range stair rods come with the following options.

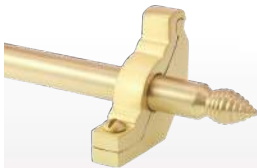
Six finials: Hanover, Lancaster, Windsor, Chatsworth, Balmoral and Woburn.

Three diameters: 12.5mm - 1/2", 16mm - 5/8" and 19mm - 3/4" (The Hanover is only available in the 12.5mm - 1/2" diameter)

Ten finishes: Antique Brass, Antique Bronze, Polished Brass, Satin Brass, Chrome, Brushed Chrome, Polished Nickel, Satin Nickel, Pewter and Black.



Balmoral Polished Brass



Chatsworth Satin Brass



Hanover Antique Brass



Windsor Antique Bronze



Lancaster Black



Hanover Pewter



Windsor Chrome



Woburn Brushed Chrome



Balmoral Polished Nickel



Chatsworth Satin Nickel





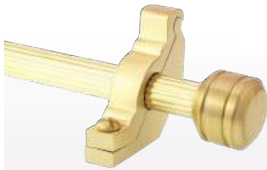
Vision

The Vision stair rods feature modern finial designs. The rods are heavy gauge hollow 1/2" - 12.5mm diameter tube with a choice of Sphere, Piston and Arrow finials. They were designed with an engineered look to complement contemporary stair cases and carpet designs. They are a great choice for those looking for something different to the norm.

The Vision range are available in the following options:
 Choice of finials: Arrow, Sphere & Piston
 Choice of finishes: Antique Brass, Antique Bronze, Polished Brass, Satin Brass, Chrome, Brushed Chrome, Polished Nickel, Satin Nickel, Pewter and Black.



Arrow Polished Brass Plain



Piston Satin Brass Reeded



Sphere Antique Brass Spiral



Piston Antique Bronze Plain



Arrow Black Plain



Piston Pewter Spiral



Sphere Chrome Reeded



Arrow Brushed Chrome Spiral



Sphere Polished Nickel Plain



Arrow Satin Nickel Reeded





Crystal



Amber Polished Brass Plain



Rainbow Satin Brass Rееded



Rose Antique Brass Spiral



Sky Antique Bronze Plain



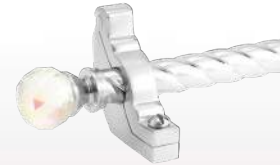
Rainbow Black Plain



Amber Pewter Spiral



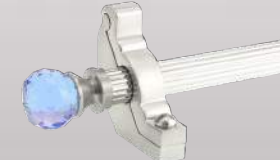
Amber Chrome Rееded



Rainbow Brushed Chrome Spiral



Rose Polished Nickel Plain



Sky Satin Nickel Rееded

Our Crystal rods feature a finely cut crystal which catches the light and creates a dramatic and quite unique decorative effect.

The rod itself is tubular and 1/2" (12.5mm) diameter.

All finial and rod colours can be mixed and matched. As an example, matching an amber crystal with an antique brass rod gives a period look, while a blue crystal on a satin nickel rod creates a modern, stylish look.

Crystal Range stair rods come with the following options:

Choice of finials: Rose (pink), Amber (yellow), Rainbow (clear) and Sky (blue)

Choice of finishes: Antique Brass, Antique Bronze, Polished Brass, Satin Brass, Chrome, Brushed Chrome, Polished Nickel, Satin Nickel, Pewter and Black.

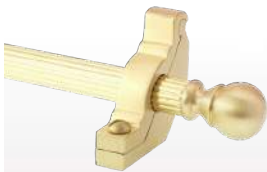




Country



Bordeaux Polished Brass Plain



Balladeer Satin Brass Reeded



Arran Antique Brass Spiral



Sherwood Antique Bronze Plain



Sherwood Black Plain



Arran Pewter Spiral



Arran Chrome Reeded



Balladeer Brushed Chrome Spiral



Bordeaux Polished Nickel Plain



Sherwood Satin Nickel Reeded

Our Country Range offers a wealth of options. Manufactured using traditional methods they combine the quality of brass with versatility and style. Designed for a range of applications our Country range stair rods are suitable for both fully fitted and runner carpets in locations ranging from grand hotels to country cottages.

Country Range Stair Rods come with the following options:

Choice of finials: Sherwood, Balladeer, Bordeaux and Arran

Choice of diameters: 12.5mm - 1/2" and 16mm - 5/8"

Choice of finishes: Antique Brass, Antique Bronze, Polished Brass, Satin Brass, Chrome, Brushed Chrome, Polished Nickel, Satin Nickel, Pewter, and Black.

Choice of rod type: Plain, Reeded or Spiral.





Tudor

Our Tudor range stair rods capture the style of classical wooden stair rods.

These stair rods are made from the finest hardwood and are available in light oak or dark oak finishes. Tudor range stair rods come with solid brass tips and elegant brackets, making them a stylish alternative to our solid brass stair rods ranges.

The hard wood we use will vary in grain pattern and shade.

Tudor Range Stair Rods come with the following options:

Choice of wood finish: Light or Dark

Choice of bracket and end cap finish: Antique Brass, Antique Bronze, Polished Brass, Satin Brass, Chrome, Brushed Chrome, Polished Nickel, Satin Nickel, Pewter and Black.



Light Brass



Dark Satin Brass



Light Antique Brass



Dark Chrome



Light Satin Nickel



Dark Pewter



Light Black





Blacksmith

Our Blacksmith range of wrought iron stair rods have been designed by award winning Northumbrian Blacksmith Rodney Brittain. Using traditional hot metalwork techniques, he has created a simplistic design that compliments a variety of interiors from rustic period properties to modern town houses.

The rods are made from 1/2" (12mm) solid steel, individually beaten into shape and then given a protective coating to prevent rust. Ideal for runners and fitted carpets.

Blacksmith Range stair rods come with the following options:

Choice of finials: Flat, Ball and Spear.

Available in stock lengths of 24" (60.9cm) to 48" (121.9cm) in 2" (5cm) increments.



Ball



Flat



Spear





Jubilee



Brass



Antique Brass



Black

Launched to celebrate the Queen's Jubilee in 2012, these rods look great and are ideal for retro fitting as they can be easily cut down to match the width of an existing carpet.

To save fitting time, the finials are already attached to the brackets.

Brackets can easily accommodate underlay and gripper, unlike other budget rods sold online.

The Jubilee range are hollow 3/8" (9mm) diameter stair rods and are available in a selection of six finishes.

These are: Brass, Antique Brass, Satin Nickel, Chrome, Pewter, Black.



Chrome



Satin Nickel



Pewter





Homepride

Homepride stair rods provide a quick and easy way to add style to your stairs.

These rods are anodised hollow aluminium and are perfect for a retro fit to an existing stair carpet. If desired, the rod, brackets and acorn finishes can be mixed and matched. For example, a black rod with brass acorns can be specified.

Homepride stair rods can be supplied with one acorn loose so they can be cut down. The acorn then pushes into place.

Available colours: Brass, Bronze, Black, Chrome, Satin Nickel and Pewter.



Brass



Bronze



Black



Chrome



Satin Nickel



Pewter





Easyrod

Easyrods are part of our "Easy" range of products - Easybind, Easystuds and now Easyrods.

They are anodized hollow 3/8" (9mm) diameter stair rods. Which are a quick and cost effective way of enhancing your stairs and hallways.

Discrete in design the Easyrod will blend in perfectly with either a minimalist or traditional interior. Perfect for retro fitting.

It doesn't matter how deep the carpet pile is, the universal Easyrods bracket will fit.



Brass



Bronze



Chrome



Black

Easyrods are and are available in brass, bronze, black and chrome finishes.

Available length: 30" (76cm) to fit carpets up to 27" (69cm)

Longer lengths are available.





Stargrip

Stargrip stair rods offer a unique way to fix carpet to the stair.

The revolutionary design of these stair rods enables them to double as a means of installation while also providing the elegance of brass stair rods on your stair case.

The profile of these brass stair rods enables them to act as a form of gripper. The rods are screwed into the stair case, tightening and securing the carpet in the process. An adhesive inlay that conceals the fixings completing the stair rods, giving them a smart, tidy finish.

Available colours: Brass, Bronze, Chrome and Black.
Available in lengths up to 200cm (78").



Brass



Bronze

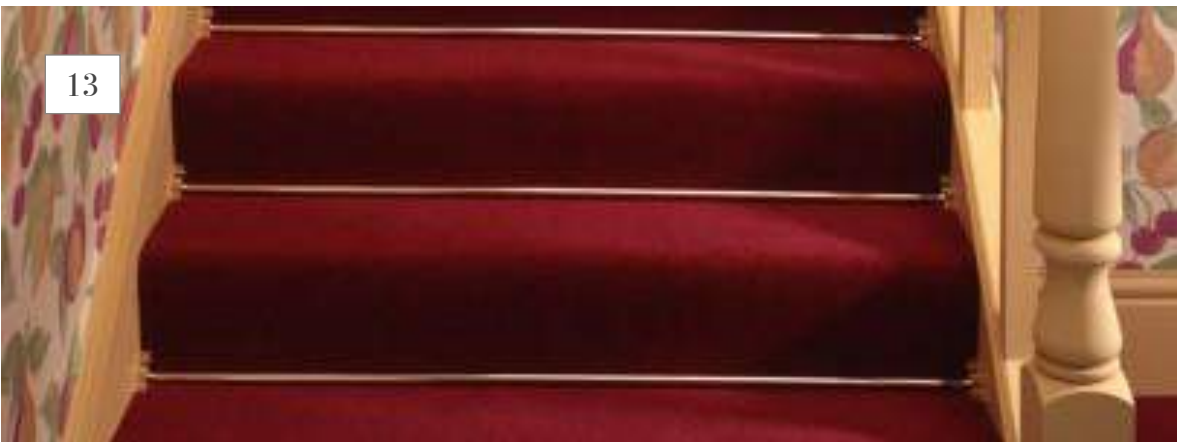


Chrome



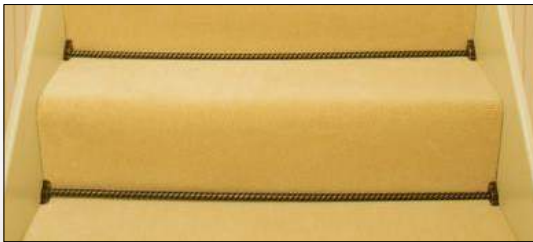
Black





Rods for Fully Fitted Carpets

It is a frequent assumption that stair rods are only available for runner carpets. However, if your stair carpet is fully fitted, it is possible to have stair rods



Side Fix

We can supply our Premier, Country and Homepride rods with Side fix brackets. The side fix bracket is not suitable for stairs with winders, because it is difficult to fix the brackets to the wall as the stair turns due to the wall not being at 90 degrees to the step. The front fix is an option here.



Front Fix

Our Royale, Eastern Promise, Premier, Country, Crystal, Tudor and Homepride rods can be supplied with a front fix bracket. This allows you to have a stair rod with a decorative finial on a fully fitted carpet.



Side/Hinged Fix

We can even cater for stairs with both runner and fully fitted carpet on the same step! Our Eastern Promise, Premier, Country, Crystal and Vision rods can be supplied with one Side Fix and one Hinged Bracket.



Easyshims

We have the ideal product designed to overcome the difference in heights between flooring. A problem that exists in almost every home. Carpets can be ramped up to 30mm to give a smooth transition which is ideal for wheel chair access.

Easyshims are for use when installing carpet next to hardwood, ceramic tile, stone and marble floors. They give a flush transition in doorways when there is a difference in height between the surface in one room and another.

When having carpet fitted, ask your fitter for Easyshims. Any height differences between flooring are smoothed out in a subtle way.



Easyshim 6mm



Easyshim 9mm



Easyshim 12mm



Easyshim 15mm



Sideshim 6mm



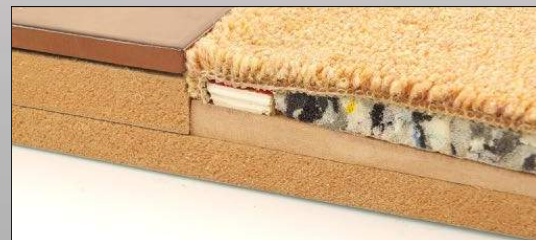
Sideshim 9mm



Sideshim 12mm



Sideshim 15mm





Premier DoubleZ™9

The Premier DoubleZ™9 is the perfect solution for joining standard pile carpets, but it does more. Easily converted into a Z bar it can now be used to transition between carpet and laminate, carpet to stone and other hard floors. As a Z bar it can also be used for carpet to laminate allowing the laminate to float.

Top surface: Solid brass.
 Base material: Aluminium
 Choice of standard finishes: Antique Brass, Antique Bronze, Polished Brass, Satin Brass.
 Choice of specialised finishes: Brushed Chrome, Chrome, Pewter, Polished Nickel and Satin Nickel.
 Choice of length: 90cm (36"), 180 (71") and 270cm (106")



Polished Brass



Chrome



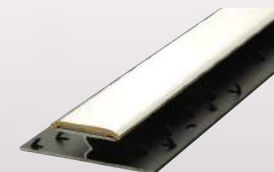
Satin Brass



Brushed Chrome



Antique Brass



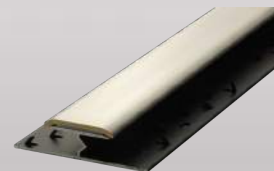
Polished Nickel



Antique Bronze



Pewter



Satin Nickel





Premier Single 9

The Premier Single 9 is a product suitable for use as an attractive carpet edge used when the carpet edge is over vinyl or in a situation where there is no flooring i.e. If the carpet ends on floorboards, this situation may occur on a staircase landing where the carpet runs along side an open balustrade. In these situations the Single 9 will give you an attractive, clean finish to your flooring.

Base material: Solid brass.
 Choice of standard finishes: Antique Brass, Antique Bronze, Polished Brass, Satin Brass.
 Choice of specialised finishes: Brushed Chrome, Chrome, Pewter, Polished Nickel and Satin Nickel.
 Choice of length: 90cm (36"), 180cm (71") and 270cm (106")



Polished Brass



Chrome



Satin Brass



Brushed Chrome



Antique Brass



Polished Nickel



Antique Bronze



Pewter



Satin Nickel





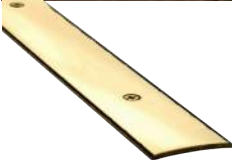
Premier Cover 38mm

The Premier Trim Cover is a screw down product for almost every transition: carpet to carpet, carpet to hard floor, vinyl to laminate, carpet to stone, the list is endless. A truly universal product. The Premier Cover will also ramp up to a 10mm edge. When fitted the fixing screws remain visible.

Base Material: Solid brass.

Choice of standard finishes: Antique Brass, Antique Bronze, Polished Brass, Satin Brass.

Choice of specialised finishes: Brushed Chrome, Chrome, Pewter, Polished Nickel and Satin Nickel.
Choice of length: 90cm (36"), 180 (71") and 270cm (106")



Polished Brass



Chrome



Satin Brass



Brushed Chrome



Antique Brass



Polished Nickel



Antique Bronze



Pewter



Satin Nickel





Premier Posh 30

The Premier Posh 30 is perfect for vinyl, LVT and thin 'Stick Down' carpets, including installations with a height difference of up to 6mm.

When fitted the fixing screws are hidden by a self adhesive inlay strip.

Manufactured from solid brass and with a profile width of only 30mm you will achieve an attractive but discrete finish to your flooring.

Base Material: Solid brass.

Choice of standard finishes: Antique Brass, Antique Bronze, Polished Brass, Satin Brass.

Choice of specialised finishes: Brushed Chrome, Chrome, Pewter, Polished Nickel and Satin Nickel.

Choice of length: 90cm (36"), 180 (71") and 270cm (106")



Polished Brass



Satin Brass



Antique Brass



Antique Bronze



Chrome



Brushed Chrome



Polished Nickel



Pewter



Satin Nickel





Premier Posh 38

The Premier Posh 38 is a product suitable for all floor coverings be it carpet, vinyl, laminate, stone or any combination of these, and because it can be used as a ramp, height differences of up to 6mm are not a problem.

Manufactured from solid brass with a profile width of 38mm and including a self adhesive inlay strip to cover the fixing screws, Posh 38 will give you an attractive, clean finish to your flooring.

Base Material: Solid brass.

Choice of standard finishes: Antique Brass, Antique Bronze, Polished Brass, Satin Brass.

Choice of specialised finishes: Brushed Chrome, Chrome, Pewter, Polished Nickel and Satin Nickel.

Choice of length: 90cm (36"), 180cm (71") and 270cm (106")



Polished Brass



Satin Brass



Antique Brass



Antique Bronze



Pewter



Chrome



Brushed Chrome



Polished Nickel



Satin Nickel





Premier Posh 55

The Premier Posh 55 is a product suitable for all floor coverings be it carpet, vinyl, laminate, stone or any combination of these, and because it can be used as a ramp, height differences of up to 8mm are not a problem. Ideal for very thick carpet.

Manufactured from solid brass with a profile width of 55mm and including a self adhesive inlay strip to cover the fixing screws, Posh 55 will give you an attractive, clean finish to your flooring.

Base Material: Solid Brass

Choice of standard finishes: Antique Brass, Antique Bronze, Polished Brass, Satin Brass.

Choice of specialised finishes: Brushed Chrome, Chrome, Pewter, Polished Nickel and Satin Nickel.

Choice of length: 90cm (36"), 180cm (71") and 270cm (106")



Polished Brass



Satin Brass



Antique Brass



Antique Bronze



Pewter



Chrome



Brushed Chrome



Polished Nickel

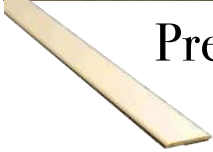


Satin Nickel





Premier Euro Floating & Vinyl Edges 20mm



Polished Brass



Satin Brass



Antique Brass



Antique Bronze



Pewter



Chrome



Brushed Chrome



Polished Nickel



Satin Nickel

The Premier 20mm Floating Cover & Vinyl Edge 1mm & Vinyl Edge 2mm are the perfect solution for LVT and Laminate installations where either one or both surfaces float. Can also be used on 'Stick down' flooring.

Suitable for level transitions or where there is a 1mm or 2mm lift.

Ideal for use on under floor heating as it is a 'Stick Down' product.

Only suitable for 'Non Porous' surfaces.

Base Material: Solid brass.

Choice of standard finishes: Antique Brass, Antique Bronze, Polished Brass, Satin Brass.

Choice of specialised finishes: Brushed Chrome, Chrome, Pewter, Polished Nickel and Satin Nickel.

Choice of length: 90cm (36"), 180 (71") and 270cm (106")





Premier Euro Cover 30mm (non floating)



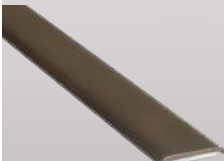
Polished Brass



Satin Brass



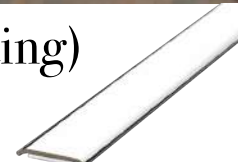
Antique Brass



Antique Bronze



Pewter



Chrome



Brushed Chrome



Polished Nickel



Satin Nickel

The Premier Trim 30mm Euro Cover is the perfect solution for installations using underfloor heating as it is a 'Stick Down' product.

When used with our dim strips the Euro Cover will accommodate a height difference of up to 6mm. Only suitable for 'Non Porous' surfaces and non floating floors.

Base Material: Solid brass.

Choice of standard finishes: Antique Brass, Antique Bronze, Polished Brass, Satin Brass.

Choice of specialised finishes: Brushed Chrome, Chrome, Pewter, Polished Nickel and Satin Nickel.

Choice of length: 90cm (36"), 180cm (71") and 270cm (106")





Premier Two-Way Ramp

The Premier Two Way Ramp is an ingenious product suitable for use on 'Non Porous' floating floors and, or where underfloor heating is installed. Each ramp will accommodate two height differences by simply turning it around, so that gives four profiles covering height differences from 2mm to 9mm in 1mm increments. Two Way Ramp will give you an attractive, clean finish to your flooring. Ideal for laminates, engineered timber floors & LVT.

Base material: Solid brass.
 Choice of standard finishes: Antique Brass, Antique Bronze, Polished Brass, Satin Brass.
 Choice of specialised finishes: Brushed Chrome, Chrome, Pewter, Polished Nickel and Satin Nickel.
 Choice of length: 90cm (36"), 180cm (71") and 270cm (106")



Polished Brass



Satin Brass



Antique Brass



Antique Bronze



Pewter



Chrome



Brushed Chrome



Polished Nickel



Satin Nickel





Premier Ramp

The Premier Ramp will give you a functional and attractive ramped transition between two hard floors that have a height difference of either 10, 12, 14 or 16mm.

This profile can be used on both floating and fixed floors or where one surface is fixed and the other is floating.

The Ramp is a stick down product therefore only suitable for 'Non Porous' surfaces.

Base material: Solid brass.

Choice of standard finishes: Antique Brass, Antique Bronze, Polished Brass, Satin Brass.

Choice of specialised finishes: Brushed Chrome, Chrome, Pewter, Polished Nickel and Satin Nickel.

Choice of length: 90cm (36"), 180 (71") and 270cm (106")



Polished Brass



Satin Brass



Antique Brass



Antique Bronze



Pewter



Chrome



Brushed Chrome

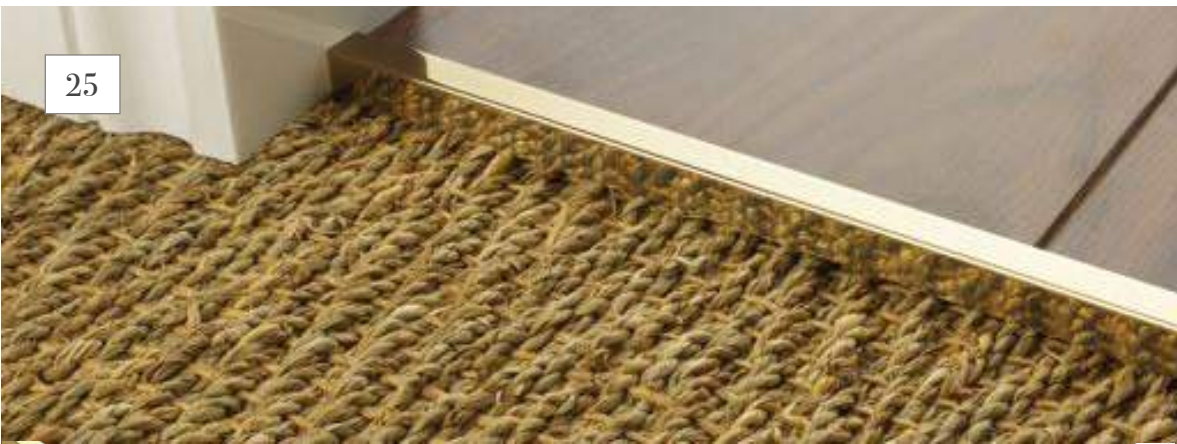


Polished Nickel



Satin Nickel





Premier Lips

The Premier Lips are a versatile section with many uses. Use it as a tile edge or to create a mat well. It will form a tidy edge against your french window or use it as a Scotia where the flooring is 10mm deep or over. For flooring under 10mm see our Little Lips.

Used in combination with our Shims the lips will allow you to deal with a height difference at a doorway of up to 35mm.

Lips are a stick down product therefore only suitable for 'Non Porous' surfaces.

Base Material: Solid brass.

Choice of standard finishes: Antique Brass, Antique Bronze, Brass, Satin Brass.

Choice of specialised finishes: Brushed Chrome, Chrome, Pewter, Polished Nickel and Satin Nickel.

Choice of length: 90cm (36"), 180cm (71") and 270cm (106")



Polished Brass



Satin Brass



Antique Brass



Antique Bronze



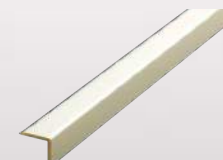
Pewter



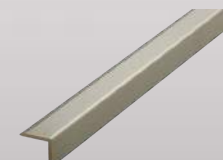
Chrome



Brushed Chrome



Polished Nickel



Satin Nickel





Premier Little Lips

The Premier Trim Little Lips are the perfect solution if you require a discrete room edge on floating floors that are 5mm or over. They can also be used on 'Stick Down' floors of 5mm or over.

Little Lips are a 'Stick Down' product therefore only suitable for 'Non Porous' surfaces.

Base Material is solid brass.
 Choice of standard finishes: Antique Brass, Antique Bronze, Polished Brass, Satin Brass.
 Choice of specialised finishes: Brushed Chrome, Chrome, Pewter, Polished Nickel and Satin Nickel.
 Choice of length: 90cm (36"), 180 (71") and 270cm (106")



Polished Brass



Chrome



Satin Brass



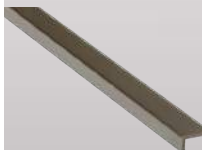
Brushed Chrome



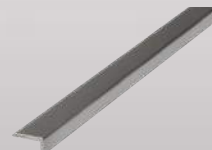
Antique Brass



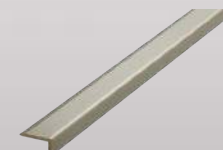
Polished Nickel



Antique Bronze



Pewter



Satin Nickel





Premier Little Nose

The Premier Little Nose has been designed as an attractive nosing for use where the stair case has a covering of LVT applied, providing a discrete edge covering the join where the LVT on the tread and riser meet.

The Little Nose is a stick down product therefore only suitable for 'Non Porous' surfaces.

Base Material is solid brass.

Choice of standard finishes: Antique Brass, Antique Bronze, Polished Brass, Satin Brass.

Choice of specialised finishes: Brushed Chrome, Chrome, Pewter, Polished Nickel and Satin Nickel.

Choice of length: 90cm (36"), 180 (71") and 270cm (106")



Polished Brass



Satin Brass



Antique Brass



Antique Bronze



Chrome



Brushed Chrome



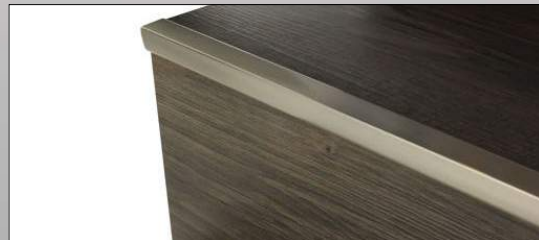
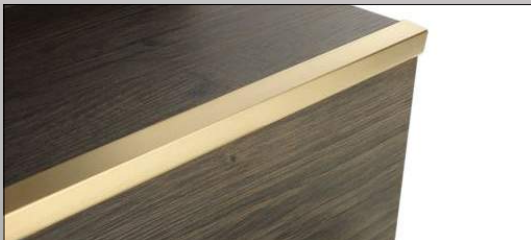
Polished Nickel



Pewter



Satin Nickel





Joints



Brass



Satin Brass



Bronze



Chrome



Satin Nickel



Pewter

The Joint is a product suitable for many transitions including: carpet to carpet, carpet to stone or any hard floor and between two hard floors including those with a height difference of up to 6mm, as the Joint can also be used as a ramp.

With a profile width of 38mm and including a self adhesive inlay strip to cover the fixing screws, Joints will give you an attractive, clean finish to your flooring.

Base Material: Aluminium

Available colours: Brass, Bronze, Black, Chrome, Satin Nickel and Pewter.

Choice of length: 81.2cm (32"), 91.5cm (36") and 243.8cm (96") excluding Chrome.

Choice of length for Chrome: 81.2cm (32"), 91.5cm (36") and 182.9cm (72")





Polished Brass

Victorian Stair Clips

In Victorian times stair clips were a popular and fashionable accessory, however modern fitting methods sadly consigned them to history.



Satin Nickel



Satin Brass

At Stair Rods UK, we have revived this attractive product. Our stair clips are solid brass and we use traditional manufacturing methods to give them quality and authenticity. They will recreate the look of yesteryear and add a distinctive touch to your stairs.



Pewter



Antique Brass

Victorian Stair Clips are available in the following finishes: Polished Brass, Antique Brass, Satin Brass, Satin Nickel, Pewter, Black, Chrome.



Black



Chrome





Skiffers

Our Skiffer corner protectors are an ornate solid brass casting designed to prevent damage to skirting boards and wall corners.

It is all too easy to scuff corners, for example when vacuum cleaning or moving furniture. Our corner protectors not only prevent this, but also add an attractive detail to a normally bland area of the house.

Skiffers are available in the following options.
Choice of finishes: Polished Brass, Antique Brass, Satin Brass, Satin Nickel, Pewter, Black, Chrome.
Choice of height: 75mm, 107mm and 134mm.



75mm Brass



75mm Satin Brass



75mm Antique Brass



107mm Chrome



107mm Satin Nickel



134mm Pewter



134mm Black





Easystuds



Brass

Carpet Studs make a feature of newell posts and landings, especially when used in conjunction with Easybind and are a nice detail when used on half landings to continue the runner effect, something that can be very difficult for the carpet fitter using traditional methods.



Satin Nickel

Carpet Studs can be used to solve the problem of visible underlay, as the carpet can be tacked to the riser, concealing the underlay.



Bronze

Carpet Studs feature a serrated pin to ensure a very strong grip in wood.



Black/Pewter

Available in Brass, Bronze, Satin Nickel, Chrome and Pewter/Black finishes.



Chrome



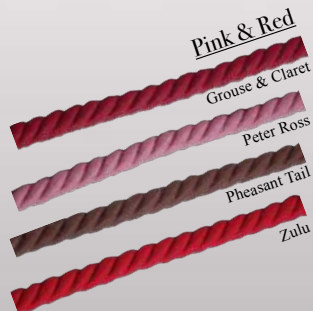


Easybind

Our Easybind carpet binding provides an alternative to whipping or binding and can save up to a week's delay in having your new carpet fitted. It enables carpet fitters to bind a carpet runner or rug on site, with 25 colours to choose from.

Easybind carpet binding come in the following colour groups:

- Blues Greys and Greens
- Beige, Black and Brown
- Multi Colour
- Pinks and Red
- Specialised Colours



Brochure Edition: October 2015

Stairrods (UK) Ltd

Unit 6, Park Road North Ind Est,
Blackhill, Consett,
Co Durham, DH8 5UN
T: +44 (0) 1207 591176
F: +44 (0) 1207 591911
E: sales@stairrods.co.uk
www.stairrods.co.uk

Stairrods Australia

T: (04) 1030 4727
F: (02) 8569 1743
E: sales@stairrods.com.au
www.stairrods.com.au

Stairrods New Zealand

T: +64 9 582 0070
F: +64 9 586 0078
E: info@floorspace.co.nz