



KERSAINT COBB & COMPANY

QUALITY NATURAL AND PURE WOOL CARPETS FROM AROUND THE WORLD

CONTENTS

INTRODUCTION 04

ADDITIONAL INFORMATION



New Signature Collection 37

Wood Flooring Brochure 68

Care & Maintenance 70

Product Suitability:

This guide will help you choose the right product for the area of your home you intend to use it in.



Anti-static



Lounge



Office



Bedroom



Stairs



Underfloor heating

PRODUCTS



Sisal

06



Grasses

22



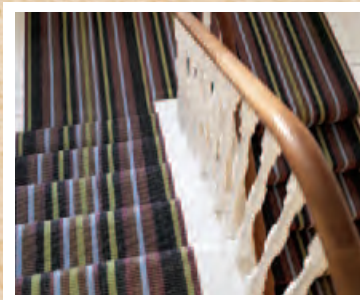
Coir

26



Jute

30



Runners

33



Wools

40





Walk across the world...

The hills of New Zealand, the beaches of India, the forests of Asia, the deserts of Africa and South America

These are just some of the places where the story of our beautiful natural floorcovering range begins.

Subtle shades and rich tones have been sourced from the finest producers across the world. Their natural surroundings provide the inspiration for our traditional and modern designs that will bring character and richness into your home.

Explore our brochure and discover a creative and diverse collection of natural fibre floorcoverings.

From the softness and warmth of wool to the exciting textures of grass, jute, coir and sisal, our selection reflects the variety and beauty of the natural world in which we live...

Mike

Sisal



Practical and durable, sisal gives you plenty of exciting ways to create a new look for your living space. Its natural fibres readily take on vegetable dyes, offering you beautiful colour blends or solid tones which you can use to plan your new decorating scheme.

Grown in Africa and South America, sisal yarn then travels to China to be made into these creative floorcoverings so you really will be bringing a piece of the world into your home.

Dare to be different and this hardwearing choice will reward you with its anti-static qualities and low maintenance.



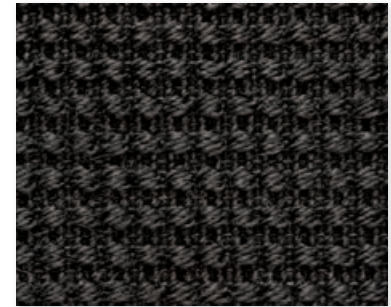
LB1047 Yang Yang

Pile: 100% Sisal
Backing: Latex
Width: 4m



LB1562 Su Lin

Pile: 100% Sisal
Backing: Latex
Width: 4m



LB1725 Tian Tian

Pile: 100% Sisal
Backing: Latex
Width: 4m



LB1450 Ling Ling

Pile: 100% Sisal
Backing: Latex
Width: 4m



LB1497 Chi Chi

Pile: 100% Sisal
Backing: Latex
Width: 4m



Image: Sisal Pandas Eye - LB1450 Ling Ling



Image: Sisal Majestic - 2347/00/20



2060/50/20

Pile: 100% Sisal
Backing: Latex
Width: 4m



2060/19/20

Pile: 100% Sisal
Backing: Latex
Width: 4m



2347/00/20

Pile: 100% Sisal
Backing: Latex
Width: 4m

Sisal

Linen

Product Suitability



Havana

Pile: 100% Sisal
Backing: Latex
Width: 4m



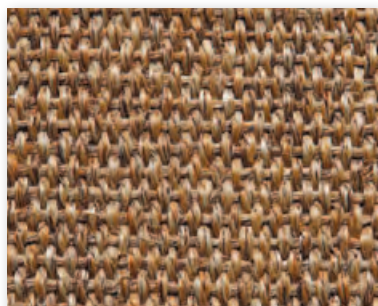
Titanium

Pile: 100% Sisal
Backing: Latex
Width: 4m



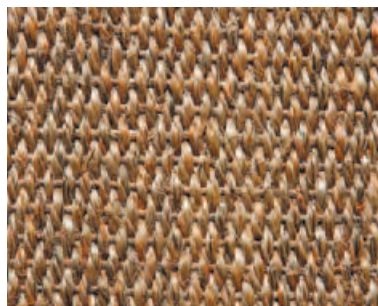
Ash

Pile: 100% Sisal
Backing: Latex
Width: 4m



Amber

Pile: 100% Sisal
Backing: Latex
Width: 4m



Cognac

Pile: 100% Sisal
Backing: Latex
Width: 4m



Image: Sisal Linen - Titanium

Sisal

Mini Boucle



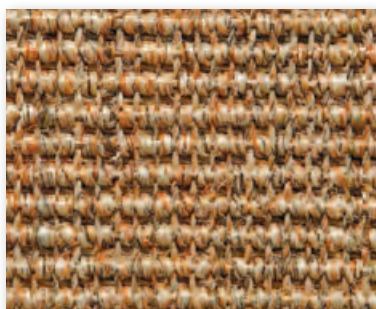
Titanium

Pile: 100% Sisal
Backing: Latex
Width: 4m



Maize

Pile: 100% Sisal
Backing: Latex
Width: 4m



Cognac

Pile: 100% Sisal
Backing: Latex
Width: 4m



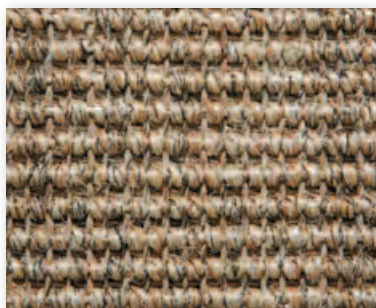
Dune

Pile: 100% Sisal
Backing: Latex
Width: 4m



Amber

Pile: 100% Sisal
Backing: Latex
Width: 4m & 5m



Flint

Pile: 100% Sisal
Backing: Latex
Width: 4m & 5m



Ash

Pile: 100% Sisal
Backing: Latex
Width: 4m & 5m



Tobacco

Pile: 100% Sisal
Backing: Latex
Width: 4m



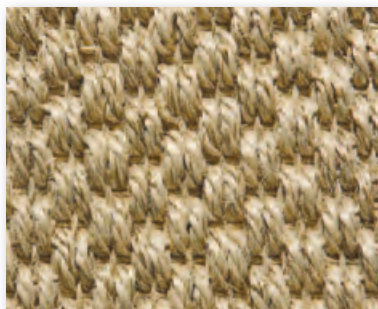
Image: Sisal Mini Boucle - Flint





Sisal

Tigers Eye



Havana

Pile: 100% Sisal
Backing: Latex
Width: 4m



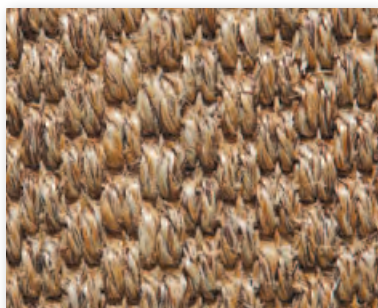
Tig-Sis

Pile: 100% Sisal
Backing: Latex
Width: 4m



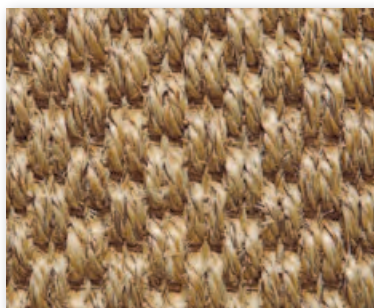
Titanium

Pile: 100% Sisal
Backing: Latex
Width: 4m



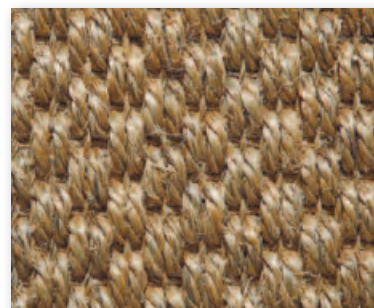
Amber

Pile: 100% Sisal
Backing: Latex
Width: 4m



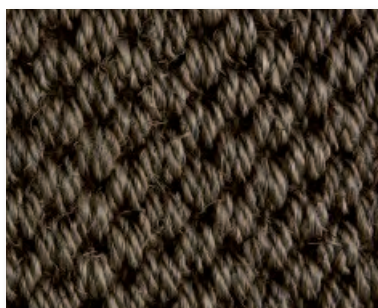
Bronze

Pile: 100% Sisal
Backing: Latex
Width: 4m



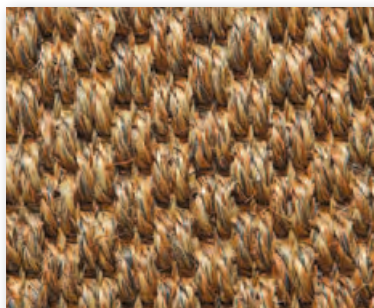
Ash

Pile: 100% Sisal
Backing: Latex
Width: 4m



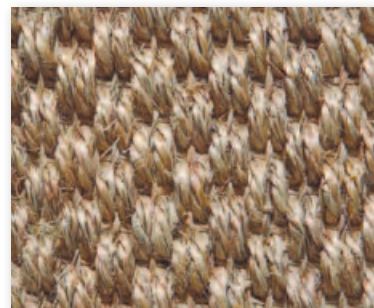
Cadium

Pile: 100% Sisal
Backing: Latex
Width: 4m



Tobacco

Pile: 100% Sisal
Backing: Latex
Width: 4m



Flint

Pile: 100% Sisal
Backing: Latex
Width: 4m



Charcoal

Pile: 100% Sisal
Backing: Latex
Width: 4m



Silver

Pile: 100% Sisal
Backing: Latex
Width: 4m



Copper

Pile: 100% Sisal
Backing: Latex
Width: 4m



Pewter

Pile: 100% Sisal
Backing: Latex
Width: 4m



Image: Sisal Tigers Eye - Tobacco

Sisal

Contrast / Panama / Herringbone

Product Suitability



Contrast - Natural

Pile: 100% Sisal
Backing: Latex
Width: 4m



Contrast - Grey

Pile: 100% Sisal
Backing: Latex
Width: 4m



Panama - Oatmeal

Pile: 100% Sisal
Backing: Latex
Width: 4m



Contrast - Duck Egg Blue

Pile: 100% Sisal
Backing: Latex
Width: 4m



Contrast - Brown

Pile: 100% Sisal
Backing: Latex
Width: 4m



Panama - Teak

Pile: 100% Sisal
Backing: Latex
Width: 4m



Herringbone - Maize

Pile: 100% Sisal
Backing: Latex
Width: 4m



Image: Sisal Herringbone - Maize



Cognac

Pile: 100% Sisal
Backing: Latex
Width: 4m



Butter

Pile: 100% Sisal
Backing: Latex
Width: 4m



Maize

Pile: 100% Sisal
Backing: Latex
Width: 4m



Turner

Pile: 100% Sisal
Backing: Latex
Width: 4m



Noir

Pile: 100% Sisal
Backing: Latex
Width: 4m



Latte

Pile: 100% Sisal
Backing: Latex
Width: 4m



Constable

Pile: 100% Sisal
Backing: Latex
Width: 4m



Van Dyck

Pile: 100% Sisal
Backing: Latex
Width: 4m



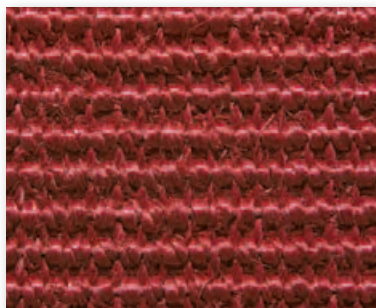
Picasso

Pile: 100% Sisal
Backing: Latex
Width: 4m



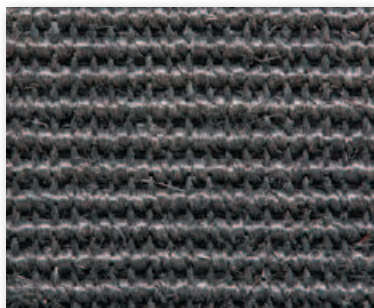
Turner

Pile: 100% Sisal
Backing: Latex
Width: 4m



Rubens

Pile: 100% Sisal
Backing: Latex
Width: 4m



Monet

Pile: 100% Sisal
Backing: Latex
Width: 4m



Van Gogh

Pile: 100% Sisal
Backing: Latex
Width: 4m



Rembrandt

Pile: 100% Sisal
Backing: Latex
Width: 4m



Renoir

Pile: 100% Sisal
Backing: Latex
Width: 4m



Dali

Pile: 100% Sisal
Backing: Latex
Width: 4m



Image: Sisal Boucle Artists - Rubens and Morocco runner - Rabat

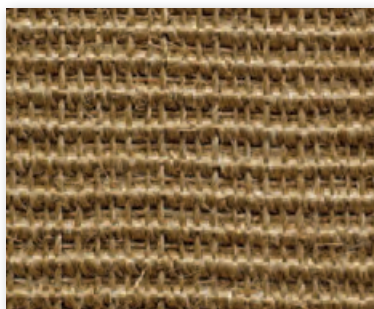
Sisal

Fine Boucle



Platinum

Pile: 100% Sisal
Backing: Latex
Width: 4m



Tungsten

Pile: 100% Sisal
Backing: Latex
Width: 4m



Gold

Pile: 100% Sisal
Backing: Latex
Width: 4m



Mercury

Pile: 100% Sisal
Backing: Latex
Width: 4m



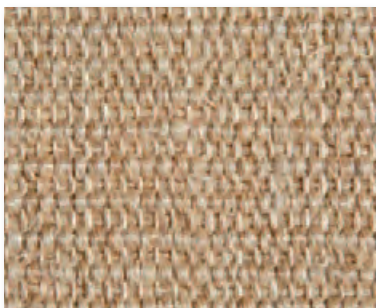
Grey

Pile: 100% Sisal
Backing: Latex
Width: 4m



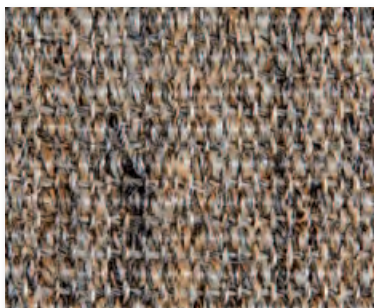
Khaki

Pile: 100% Sisal
Backing: Latex
Width: 4m



Fossil

Pile: 100% Sisal
Backing: Latex
Width: 4m



Marble

Pile: 100% Sisal
Backing: Latex
Width: 4m



Image: Sisal Fine Boucle - Gold

Grasses



The pale green and yellow hues of our seagrass are a natural reflection of the Vietnamese landscape where it is grown and harvested. After reaching China it is spun and woven into the most natural flooring we offer. With a thin latex backing seagrass will live and breathe in your home, ageing beautifully as its colour tone changes throughout its life.

For even more freshness choose our fine seagrass products, the fibres of which are harvested when the plant is much younger providing a more intense green colour and a vivid way to bring the outside into your living space.



Image: Seagrass – Basketweave

Grasses

Seagrass / Fine Seagrass



Seagrass - Herringbone

Pile: 100% Seagrass
Backing: Latex
Width: 4m



Seagrass - Basketweave

Pile: 100% Seagrass
Backing: Latex
Width: 4m



Seagrass - Standard

Pile: 100% Seagrass
Backing: Latex
Width: 4m



Fine Seagrass - Herringbone

Pile: 100% Seagrass
Backing: Latex
Width: 4m



Fine Seagrass - Basketweave

Pile: 100% Seagrass
Backing: Latex
Width: 4m



Fine Seagrass - Standard

Pile: 100% Seagrass
Backing: Latex
Width: 4m



Image: Grasses Fine Seagrass - Standard

Coir



Think of a fresh coconut lying on a beach in Kerala, southern India and imagine bringing this inside your home with one of our coir floorcoverings.

Coconut husk provides the short brown fibres for the tough yarn that is soaked, spun and woven into an exciting range for that real outdoors feeling under your feet. Choose it for your harder working areas and enjoy low maintenance, rustic charm.

Our Coconut matting is a perfect way to protect your floors from unwanted dirt, they can be loose laid or fitted into an entrance matwell. With seven colours available it's practical and stylish.



Image: Coir Herringbone - Natural

Coir

Various

Product Suitability



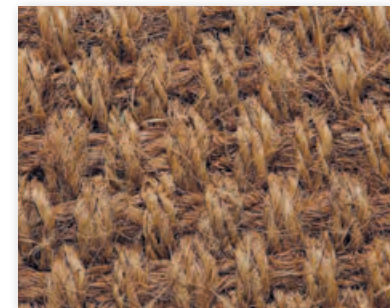
"The rough fibres of a coconut - are softend and spun to weave into these dark golden hard-wearing floors. They will stand upto the heaviest of wear."

"Using a coir entrance matt not only protects your home from unwanted dirt from outside but also vacuum's clean easily."



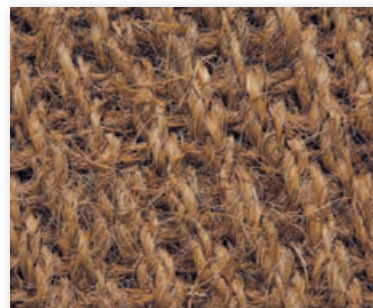
Anjengo - Natural

Pile: 100% Coir
Backing: Latex
Width: 4m & 5m



Panama - Natural

Pile: 100% Coir
Backing: Latex
Width: 3.94m & 5m



Herringbone - Natural

Pile: 100% Coir
Backing: Latex
Width: 3.94m & 5m



Boucle - Natural

Pile: 100% Coir
Backing: Latex
Width: 3.94m & 5m

Coir

Matting

Product Suitability



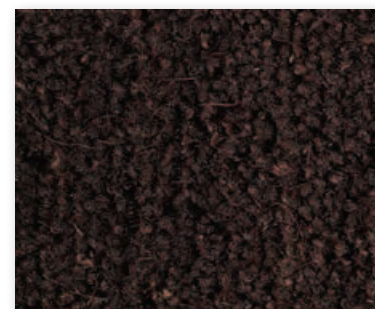
Natural

Pile: 100% Coir
Backing: PVC
Width: 1m & 2m



Light Brown

Pile: 100% Coir
Backing: PVC
Width: 1m & 2m



Dark Brown

Pile: 100% Coir
Backing: PVC
Width: 1m & 2m



Grey

Pile: 100% Coir
Backing: PVC
Width: 1m & 2m



Black

Pile: 100% Coir
Backing: PVC
Width: 1m & 2m



Red

Pile: 100% Coir
Backing: PVC
Width: 1m & 2m



Image: Coir Matting - Natural

Jute



Soft and golden, the slender jute fibres from Bangladesh & India love the sun and the humid times of the monsoon season. This is reflected in its appearance when woven into gorgeous silky flooring.

You'll love jute in the quieter areas of your home and experience a calming, soothing feel. What's more you can relax with the knowledge that jute is recyclable & biodegradable.



Image: Jute Medium Boucle

Jute

Flat Woven

Product Suitability



Panama - Natural

Pile: 100% Jute
Backing: Latex
Width: 4m



Herringbone - Natural

Pile: 100% Jute
Backing: Latex
Width: 4m



Medium Boucle - Natural

Pile: 100% Jute
Backing: Latex
Width: 4m

"Jute has been used as a floorcovering for centuries and offers a softer alternative underfoot to most other natural fibres. We protect their surfaces using Intec® the natural flooring protection which helps against spills & stains. Only install Jute products in low wearing areas of your home."



Image: Morocco Runner El Jadida

Runners Collection



Runners

Morocco Collection



Image: Morocco Runner - Marrakech



Marrakech

Pile: 100% Sisal
Backing: Latex
Width: 69cm (27")



Meknes

Pile: 100% Sisal
Backing: Latex
Width: 69cm (27")



Fez

Pile: 100% Sisal
 Backing: Latex
 Width: 69cm (27")



Rabat

Pile: 100% Sisal
 Backing: Latex
 Width: 69cm (27")



Agadir

Pile: 100% Sisal
 Backing: Latex
 Width: 69cm (27")



Tetouan

Pile: 100% Sisal
 Backing: Latex
 Width: 69cm (27")



El Jadida

Pile: 100% Sisal
 Backing: Latex
 Width: 69cm (27")



Casablanca

Pile: 100% Sisal
 Backing: Latex
 Width: 69cm (27")

Runners

Use this simple guide to match your runner with a complimentary broadloom for a real unified look throughout your home.

"Select your runner, then compliment it with one of our sisal broadloom products to fit in adjoining Landings/Hallways & Bedrooms etc, This selection grid will guide you, just follow the colour references for the most suitable choice."



		BROADLOOM				
		mb Dune	Art Rembrandt	Art Dali	Art Rubens	Art Picasso
RUNNERS	Marrakech	●				
	Fez	●			●	
	Meknes	●			●	
	Tetouan	●				
	Agadir	●	●			
	Rabat	●	●	●	●	
	El Jadida		●			
	Casablanca					●



Be a shade braver.



Fiji

Pile: 100% Wool
Backing: Action Back
Width: 4m



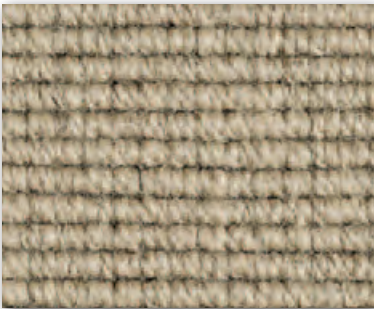
Easter Island

Pile: 100% Wool
Backing: Action Back
Width: 4m



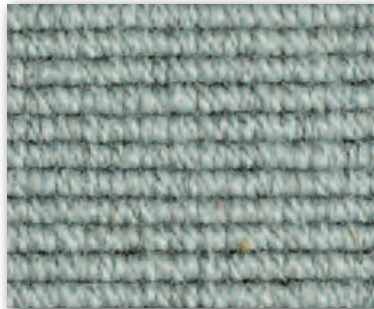
Samoa

Pile: 100% Wool
Backing: Action Back
Width: 4m



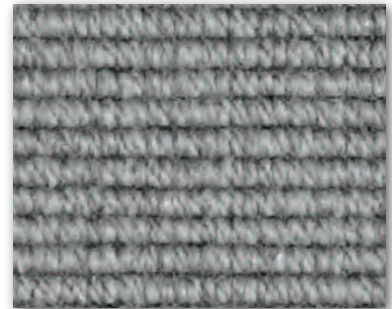
Wallis

Pile: 100% Wool
Backing: Action Back
Width: 4m



Rarotonga

Pile: 100% Wool
Backing: Action Back
Width: 4m



Solomon

Pile: 100% Wool
Backing: Action Back
Width: 4m



Tuvalu

Pile: 100% Wool
Backing: Action Back
Width: 4m



Futuna

Pile: 100% Wool
Backing: Action Back
Width: 4m



Polynesia

Pile: 100% Wool
Backing: Action Back
Width: 4m



Tahiti

Pile: 100% Wool
Backing: Action Back
Width: 4m



Niue

Pile: 100% Wool
Backing: Action Back
Width: 4m



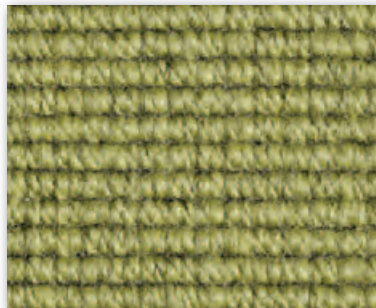
Tonga

Pile: 100% Wool
Backing: Action Back
Width: 4m



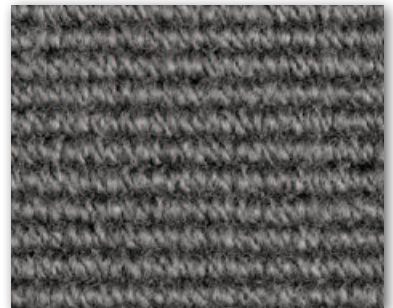
Tokelau

Pile: 100% Wool
Backing: Action Back
Width: 4m



Vanuatu

Pile: 100% Wool
Backing: Action Back
Width: 4m



Kiribati

Pile: 100% Wool
Backing: Action Back
Width: 4m



Bora Bora

Pile: 100% Wool
Backing: Action Back
Width: 4m



Christmas Island

Pile: 100% Wool
Backing: Action Back
Width: 4m



Pitcairn

Pile: 100% Wool
Backing: Action Back
Width: 4m

Wools

Only a rich wool carpet gives you that warm cosy feeling combined with beautiful textures. Picture sheep gently grazing in a green field and you can see the natural source of this organic, renewable fibre that's as versatile as you want it to be.

Soft and luxurious or dense and functional, you'll find something to suit every area of your home and wide choice of colour from pale neutrals to darker indulgent tones - and don't miss our stylish stripes for a real statement.

We travel the world to source the finest wool carpets from across Europe and as far away as New Zealand to provide to provide an extensive and exciting range from which to choose. Make our world your home...



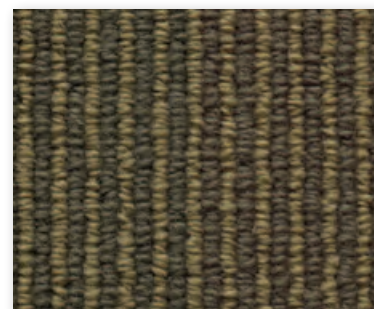


Image: Chic Pinstripe - Amsterdam



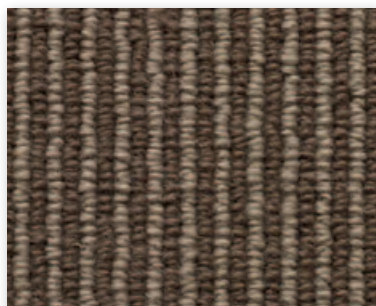
Amsterdam

Pile: 100% Wool
Backing: Action Back
Width: 4m



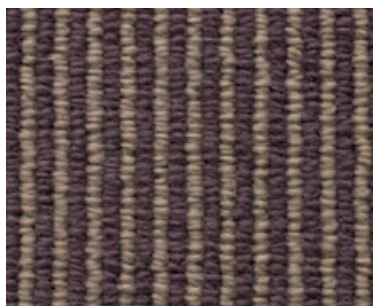
Geneva

Pile: 100% Wool
Backing: Action Back
Width: 4m



Copenhagen

Pile: 100% Wool
Backing: Action Back
Width: 4m



Brugge

Pile: 100% Wool
Backing: Action Back
Width: 4m



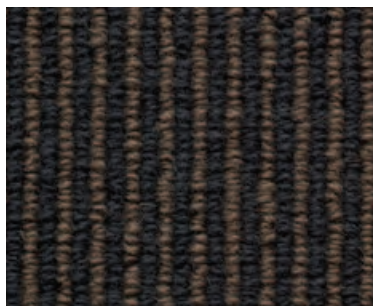
Rome

Pile: 100% Wool
Backing: Action Back
Width: 4m



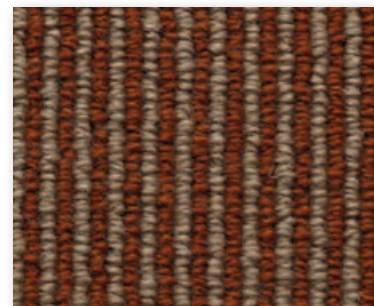
Prague

Pile: 100% Wool
Backing: Action Back
Width: 4m



Athens

Pile: 100% Wool
Backing: Action Back
Width: 4m



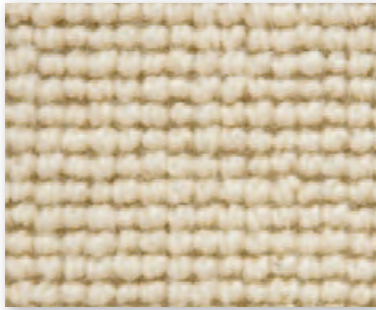
Istanbul

Pile: 100% Wool
Backing: Action Back
Width: 4m

Wool

Pampas Knitted

Product Suitability



Arran 00

Pile: 100% Wool
Backing: Action Back
Width: 4m & 5m



Orkney 04

Pile: 100% Wool
Backing: Action Back
Width: 4m & 5m



Lewis 02

Pile: 100% Wool
Backing: Action Back
Width: 4m & 5m



Shetland 17

Pile: 100% Wool
Backing: Action Back
Width: 4m & 5m



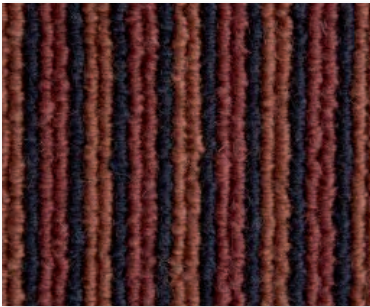
Mull 14

Pile: 100% Wool
Backing: Action Back
Width: 4m & 5m

Wool

Pampas Beach Hut Stripe

Product Suitability



Aldeburgh

Pile: 100% Wool
Backing: Jute
Width: 4m



Worthing

Pile: 100% Wool
Backing: Jute
Width: 4m



Hastings

Pile: 100% Wool
Backing: Jute
Width: 4m



Cromer

Pile: 100% Wool
Backing: Jute
Width: 4m



Southwold

Pile: 100% Wool
Backing: Jute
Width: 4m



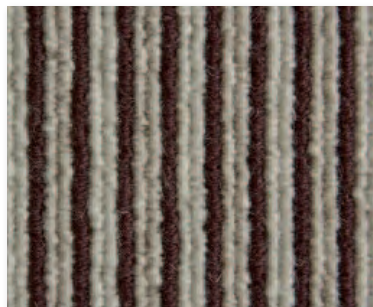
Bournemouth

Pile: 100% Wool
Backing: Jute
Width: 4m



Paignton

Pile: 100% Wool
Backing: Jute
Width: 4m



Scarborough

Pile: 100% Wool
Backing: Jute
Width: 4m



Eastbourne

Pile: 100% Wool
Backing: Jute
Width: 4m

Wool

Pampas Berber Loop

Product Suitability



86

Pile: 100% Wool
Backing: Jute
Width: 4m & 5m



38

Pile: 100% Wool
Backing: Jute
Width: 4m & 5m



87

Pile: 100% Wool
Backing: Jute
Width: 4m & 5m



39

Pile: 100% Wool
Backing: Jute
Width: 4m & 5m



88

Pile: 100% Wool
Backing: Jute
Width: 4m & 5m



40

Pile: 100% Wool
Backing: Jute
Width: 4m & 5m

Wool

New Worlds



Alaska

Pile: 100% Wool
Backing: Action Back
Width: 4m



Argentina

Pile: 100% Wool
Backing: Action Back
Width: 4m



Brazil

Pile: 100% Wool
Backing: Action Back
Width: 4m



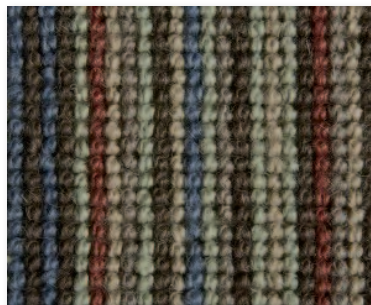
Canada

Pile: 100% Wool
Backing: Action Back
Width: 4m



Chile

Pile: 100% Wool
Backing: Action Back
Width: 4m



Peru

Pile: 100% Wool
Backing: Action Back
Width: 4m



USA

Pile: 100% Wool
Backing: Action Back
Width: 4m



Image: New Worlds - Chile

Wool

Pampas Boucle

Product Suitability



118

Pile: 100% Wool
Backing: Jute
Width: 4m & 5m



119

Pile: 100% Wool
Backing: Jute
Width: 4m & 5m



121

Pile: 100% Wool
Backing: Jute
Width: 4m & 5m



123

Pile: 100% Wool
Backing: Jute
Width: 4m & 5m



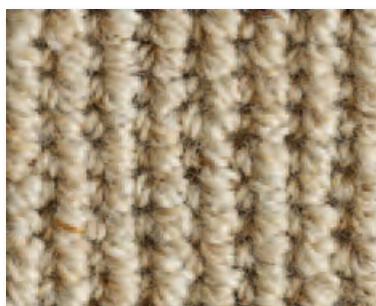
124

Pile: 100% Wool
Backing: Jute
Width: 4m & 5m



126

Pile: 100% Wool
Backing: Jute
Width: 4m & 5m



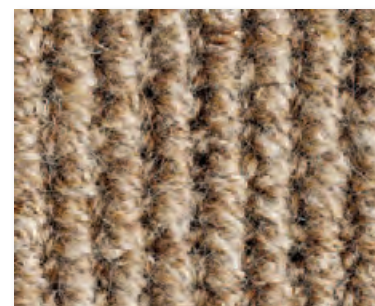
1810

Pile: 100% Wool
Backing: Jute
Width: 4m & 5m



1813

Pile: 100% Wool
Backing: Jute
Width: 4m & 5m



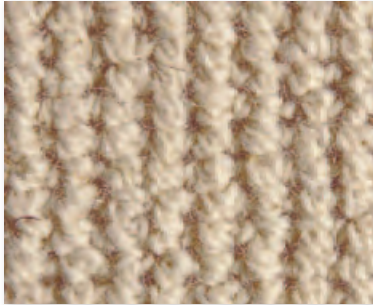
1815

Pile: 100% Wool
Backing: Jute
Width: 4m & 5m

Wool

Pampas Boucle

Product Suitability



983

Pile: 100% Wool
Backing: Jute
Width: 4m & 5m



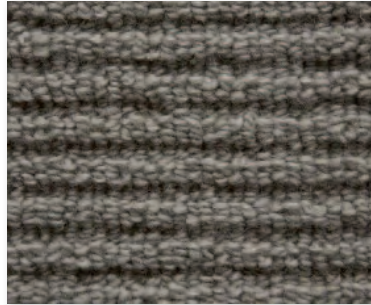
995

Pile: 100% Wool
Backing: Jute
Width: 4m & 5m



Antigua 15D

Pile: 100% Wool
Backing: Action
Width: 4m & 5m



Barbados 77D

Pile: 100% Wool
Backing: Action
Width: 4m & 5m



Grenada 76D

Pile: 100% Wool
Backing: Action
Width: 4m & 5m



Martinique 12D

Pile: 100% Wool
Backing: Action
Width: 4m & 5m



Nevis 70D

Pile: 100% Wool
Backing: Action
Width: 4m & 5m



St Barts 06D

Pile: 100% Wool
Backing: Action
Width: 4m & 5m



St Lucia 11D

Pile: 100% Wool
Backing: Action
Width: 4m & 5m



St Martin 74D

Pile: 100% Wool
Backing: Action
Width: 4m & 5m



St Vincent 09D

Pile: 100% Wool
Backing: Action
Width: 4m & 5m

Wool

Caribbean Nights

Product Suitability



Antigua 15N

Pile: 100% Wool
Backing: Action
Width: 4m & 5m



Barbados 77N

Pile: 100% Wool
Backing: Action
Width: 4m & 5m



Grenada 76N

Pile: 100% Wool
Backing: Action
Width: 4m & 5m



Martinique 12N

Pile: 100% Wool
Backing: Action
Width: 4m & 5m



Nevis 70N

Pile: 100% Wool
Backing: Action
Width: 4m & 5m



St Barts 06N

Pile: 100% Wool
Backing: Action
Width: 4m & 5m



St Lucia 11N

Pile: 100% Wool
Backing: Action
Width: 4m & 5m



St Martin 74N

Pile: 100% Wool
Backing: Action
Width: 4m & 5m



St Vincent 09N

Pile: 100% Wool
Backing: Action
Width: 4m & 5m

Wool

Country Herbs

Product Suitability

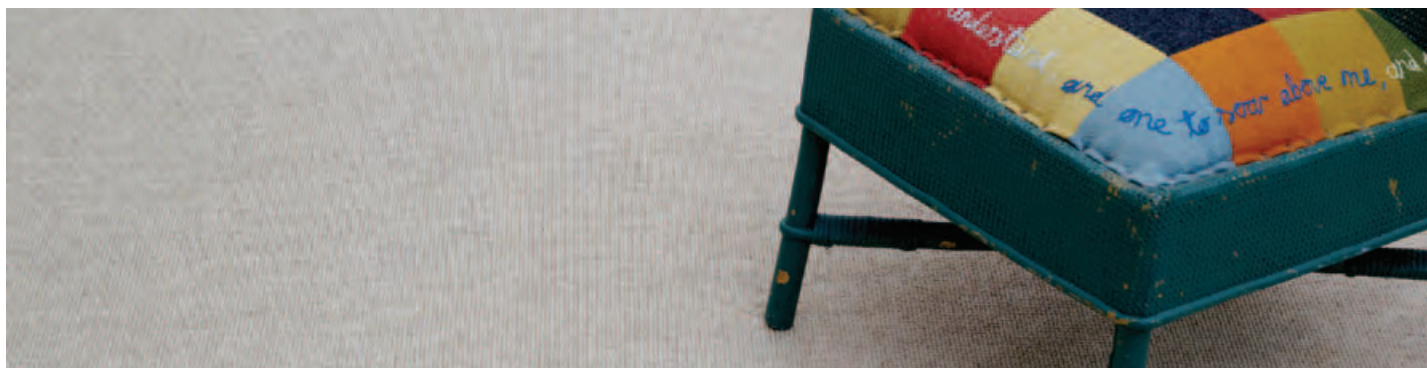


Image: Wool Country Herbs - Wild Garlic



Wild Garlic

Pile: 100% Wool
Backing: Action Back
Width: 4m & 5m



Tarragon

Pile: 100% Wool
Backing: Action Back
Width: 4m & 5m



Sorrel

Pile: 100% Wool
Backing: Action Back
Width: 4m & 5m



Chervil

Pile: 100% Wool
Backing: Action Back
Width: 4m & 5m



Wild Thyme

Pile: 100% Wool
Backing: Action Back
Width: 4m & 5m



Rosemary

Pile: 100% Wool
Backing: Action Back
Width: 4m & 5m

Wool

African Plains

Product Suitability



Katavi

Pile: 100% Wool
Backing: Action
Width: 4m



Kilimanjaro

Pile: 100% Wool
Backing: Action
Width: 4m



Masai Mara

Pile: 100% Wool
Backing: Action
Width: 4m



Serengeti

Pile: 100% Wool
Backing: Action
Width: 4m



Zambeze

Pile: 100% Wool
Backing: Action
Width: 4m

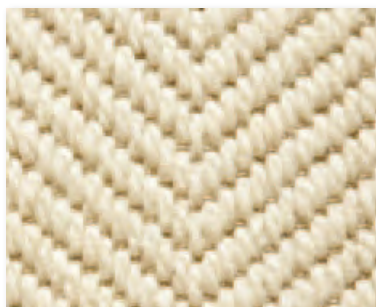
Wool

Pampas Herringbone Plains

Product Suitability

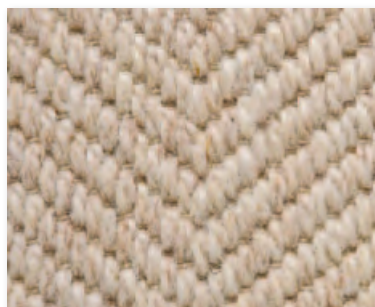


Image: Pampas Herringbone - 009



001

Pile: 100% Wool
Backing: Action Back
Width: 4m



009

Pile: 100% Wool
Backing: Action Back
Width: 4m



058

Pile: 100% Wool
Backing: Action Back
Width: 4m



060

Pile: 100% Wool
Backing: Action Back
Width: 4m



005

Pile: 100% Wool
Backing: Action Back
Width: 4m

Wool

Savannah Milan

Product Suitability



18

Pile: 50% Polypropylene 45% Jute 5% Wool
Backing: Jute
Width: 4m & 5m



19

Pile: 50% Polypropylene 45% Jute 5% Wool
Backing: Jute
Width: 4m & 5m



24

Pile: 50% Polypropylene 45% Jute 5% Wool
Backing: Jute
Width: 4m & 5m



25

Pile: 50% Polypropylene 45% Jute 5% Wool
Backing: Jute
Width: 4m & 5m

Wool

Pampas London



Greenwich

Pile: 100% Wool
Backing: Action Back
Width: 4m



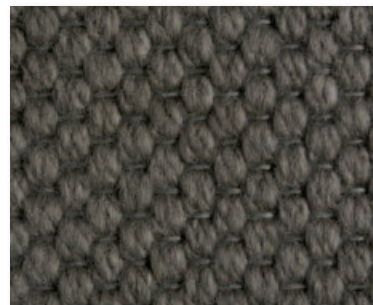
Hampstead

Pile: 100% Wool
Backing: Action Back
Width: 4m



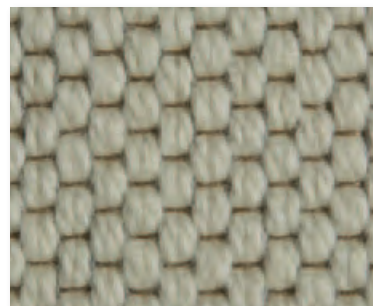
Holborn

Pile: 100% Wool
Backing: Action Back
Width: 4m



Richmond

Pile: 100% Wool
Backing: Action Back
Width: 4m



Westminster

Pile: 100% Wool
Backing: Action Back
Width: 4m



Image: Wool Pampas London - Westminster

Wool

Pampas Nordic / Pampas Nordic Stripe



Pampas Nordic - Bergen

Pile: 50% Wool 50% Polypropylene
Backing: Action Back
Width: 4m & 5m



Pampas Nordic - Gothenburg

Pile: 50% Wool 50% Polypropylene
Backing: Action Back
Width: 4m & 5m



Pampas Nordic - Helsinki

Pile: 50% Wool 50% Polypropylene
Backing: Action Back
Width: 4m & 5m



Pampas Nordic - Nuuk

Pile: 50% Wool 50% Polypropylene
Backing: Action Back
Width: 4m & 5m



Pampas Nordic - Odense

Pile: 50% Wool 50% Polypropylene
Backing: Action Back
Width: 4m & 5m



Pampas Nordic - Oslo

Pile: 50% Wool 50% Polypropylene
Backing: Action Back
Width: 4m & 5m



Pampas Nordic - Reykjavik

Pile: 50% Wool 50% Polypropylene
Backing: Action Back
Width: 4m & 5m



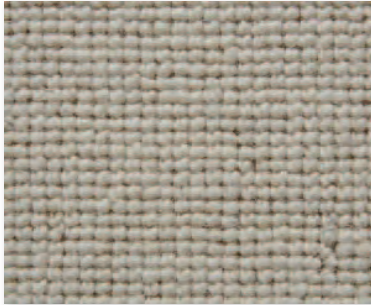
Pampas Nordic - Skagen

Pile: 50% Wool 50% Polypropylene
Backing: Action Back
Width: 4m & 5m



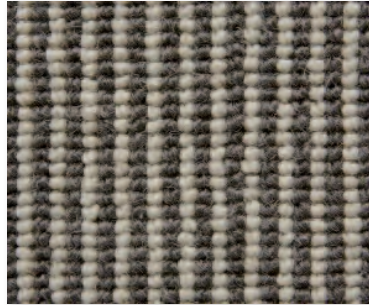
Pampas Nordic - Stockholm

Pile: 50% Wool 50% Polypropylene
Backing: Action Back
Width: 4m & 5m



Pampas Nordic - Turku

Pile: 50% Wool 50% Polypropylene
 Backing: Action Back
 Width: 4m & 5m



Pampas Nordic Stripe - Sweden

Pile: 50% Wool 50% Polypropylene
 Backing: Action Back
 Width: 4m



Pampas Nordic Stripe - Denmark

Pile: 50% Wool 50% Polypropylene
 Backing: Action Back
 Width: 4m



Pampas Nordic Stripe - Finland

Pile: 50% Wool 50% Polypropylene
 Backing: Action Back
 Width: 4m



Pampas Nordic Stripe - Iceland

Pile: 50% Wool 50% Polypropylene
 Backing: Action Back
 Width: 4m



Pampas Nordic Stripe - Norway

Pile: 50% Wool 50% Polypropylene
 Backing: Action Back
 Width: 4m

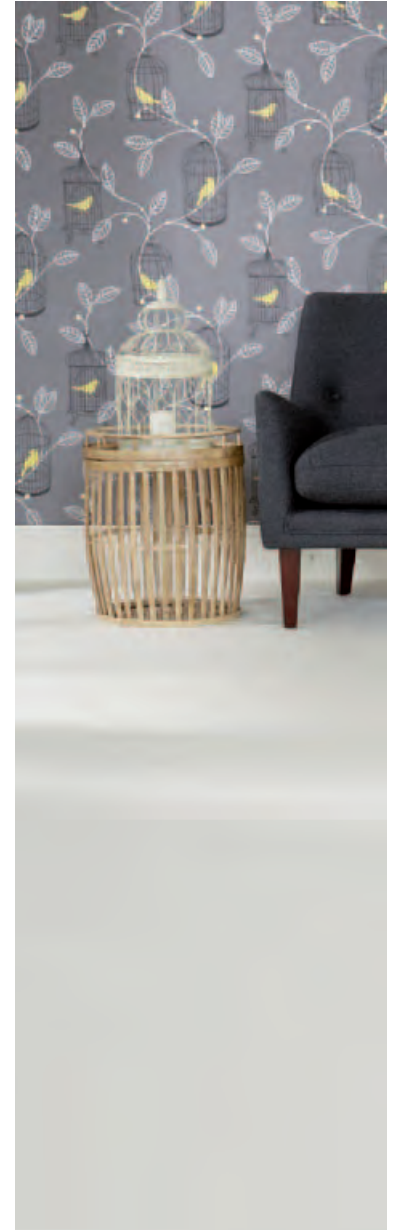


Image: Pampas Nordic - Turku

Wool

Orient Express



Buffet Car

Pile: 100% Wool
Backing: Jute
Width: 4m



First Class

Pile: 100% Wool
Backing: Jute
Width: 4m



Lounge Car

Pile: 100% Wool
Backing: Jute
Width: 4m



Night Train

Pile: 100% Wool
Backing: Jute
Width: 4m



Orient Rose

Pile: 100% Wool
Backing: Jute
Width: 4m



Platform

Pile: 100% Wool
Backing: Jute
Width: 4m



Raffles Tea

Pile: 100% Wool
Backing: Jute
Width: 4m



Railroad

Pile: 100% Wool
Backing: Jute
Width: 4m



Silk Road

Pile: 100% Wool
Backing: Jute
Width: 4m



Steam

Pile: 100% Wool
Backing: Jute
Width: 4m



Suitcase

Pile: 100% Wool
Backing: Jute
Width: 4m



Image: Orient Express - Platform

Wool

Adventures



Dawn Mist

Pile: 100% Wool
Backing: Jute
Width: 4m



East Wind

Pile: 100% Wool
Backing: Jute
Width: 4m



Grey Goose

Pile: 100% Wool
Backing: Jute
Width: 4m



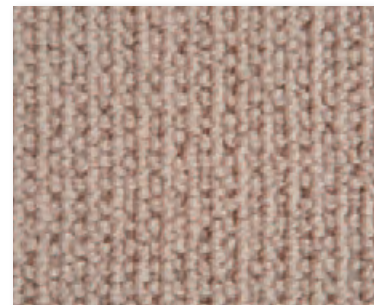
Horizon

Pile: 100% Wool
Backing: Jute
Width: 4m



Night Sky

Pile: 100% Wool
Backing: Jute
Width: 4m



Panorama

Pile: 100% Wool
Backing: Jute
Width: 4m



Snowy Peak

Pile: 100% Wool
Backing: Jute
Width: 4m



Summer Rain

Pile: 100% Wool
Backing: Jute
Width: 4m



Sunrise

Pile: 100% Wool
Backing: Jute
Width: 4m



Treetops

Pile: 100% Wool

Backing: Jute

Width: 4m



Waterfall

Pile: 100% Wool

Backing: Jute

Width: 4m

Wool

Classics



Colonial

Pile: 100% Wool
Backing: Jute
Width: 4m



Commonwealth

Pile: 100% Wool
Backing: Jute
Width: 4m



Dynasty

Pile: 100% Wool
Backing: Jute
Width: 4m



Heritage

Pile: 100% Wool
Backing: Jute
Width: 4m



Imperial

Pile: 100% Wool
Backing: Jute
Width: 4m



Monarchy

Pile: 100% Wool
Backing: Jute
Width: 4m



Opulence

Pile: 100% Wool
Backing: Jute
Width: 4m



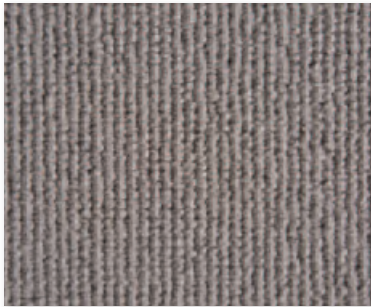
Princess

Pile: 100% Wool
Backing: Jute
Width: 4m



Regal

Pile: 100% Wool
Backing: Jute
Width: 4m



Throne

Pile: 100% Wool
 Backing: Jute
 Width: 4m



Vintage

Pile: 100% Wool
 Backing: Jute
 Width: 4m



Image: Classics - Monarchy





Image: Beach Hut Stripe - Paignton

Wood Flooring Brochure



Introducing our world
of wood flooring to
enhance any home.



12 stunning natural timber floors which reflect the very best in quality, affordability, texture and style for any domestic situation. We source ethically managed timber direct from producers across Asia, America and Europe and they complement our natural flooring products beautifully.

This brochure will help guide your selection; a free sample service is available online at: www.kersaintcobb.co.uk

Care & Maintenance

Natural flooring products are made of 100% natural fibres from totally renewable resources, making them environmentally friendly both through production and in the home. Plant fibres have been used for flooring as far back as Ancient Egypt, when bulrushes from the Nile were woven for this purpose. Along with the 'green' benefits, natural flooring with its contemporary and modern look, offers a practical, versatile and aesthetically pleasing alternative to traditional wool carpets.

Try before you buy

We provide samples of all our floorcoverings to help you make your decision as easy as possible. Please visit www.kersaintcobb.co.uk or call us on 01675 430430 to place your request.

Getting your product installed

All of our wool products can be installed in the traditional way, but plant fibre floorcoverings should be installed by a specialist, using the correct installation products to ensure you get the most out of your investment.

Care & Maintenance

Natural floor coverings can be kept looking good just by carrying out your normal regular cleaning routine as you would with any other floor covering. Using a Kersaint Cobb Coir barrier mat at entrances will reduce the amount of dirt walked into an area. It is advisable to use suction only vacuum cleaners as other types can cause damage to the fibres of natural flooring products.

Sisal, Jute, Seagrass, and Coir products all have a latex backing which prevents dust and dirt build up underneath the floor covering which keeps dust and maintenance to a minimum.

Further added protection of a castor chair mat is suggested if using chairs fitted with castors. Frequent movement of castors can damage the fibres of the flooring.

Important Note:

Natural Fibre products can contain irregularities in weave and colour, this is not deemed to be a fault, but is seen as a characteristic of this style of flooring. Also some colour loss can be anticipated when fitted in direct sunlight, this is due to the natural dyes which are used in the making of these products.

Cleaning

By nature, natural floorings are more absorbent than their traditional counterparts and benefit greatly from Intec® protection. Intec® is the effective way to protect your natural flooring from dirt and stains. With Kersaint Cobb products you have the choice of having your floor covering treated with Intec® before it leaves the warehouse.

This is a stain protection solution specifically developed for natural floorings. It coats every fibre with a polymer shield resulting in resistance to the absorption of stains and dirt. Intec® is environmentally friendly, completely safe and does not affect the colour or texture of any floor covering. Any spillages should be tackled as quickly as possible using a clean cloth or kitchen roll.

Important Note:

Under no circumstances at all should you use wet shampoo, wet cleaning or steam cleaning on any natural flooring as the natural fibres are prone to shrinkage when wet. If you wish to carry out a full thorough clean of your natural flooring it is recommended that you use a professional dry cleaning method.

Visit www.kersaintcobb.co.uk or call us on 01675 430430

Please note that while we have taken great care to ensure all products and colours are represented accurately, the limitations of printing slight variations may occur with some of our products in this brochure. All reasonable care has been taken to ensure that the descriptions are accurate. However specifications may change. All products are subject to availability and may be withdrawn or discontinued.

Many thanks to Scene Photography, Veldonn Printers and the team at Fresh* Ad Communications, for all their hard work and commitment producing this brochure. T: 0116 2541351 E: alf@freshcom.co.uk





KERSAINT COBB & COMPANY

Gorsey Lane, Coleshill
Birmingham
B46 1JU

T: 01675 430430
E: sales@kersaintcobb.co.uk
www.kersaintcobb.co.uk