

A/C Number:

*jhs*

# PRICE LIST

1st April 2014

J O S E P H  
H A M I L T O N  
& S E A T O N

**Direct Sales Tel:**

**01827 831 400**

**[www.jhscarpets.com](http://www.jhscarpets.com)**

ISO 9001 Registered company

	Width m	Total Weight g/m <sup>2</sup>	Backing	Guarantee	Roll Price £m <sup>2</sup>	Cut Length Price £m <sup>2</sup>
<b>Tretford</b> 80% Animal Hair / 15% Nylon / 5% Viscose	2.00	2,750	Jute	5 Years	19.65	21.95

	Width m	Total Weight g/m <sup>2</sup>	Backing	Guarantee	No Tiles per Box Split Box Y/N	Price Per m <sup>2</sup>	Price Per Tile
<b>Tretford Ecoback Tile</b> 70% Animal Hair / 30% Nylon	50 x 50	4,100	Ecoback (Recycled Felt)	5 Years	20 Y	30.40	7.60



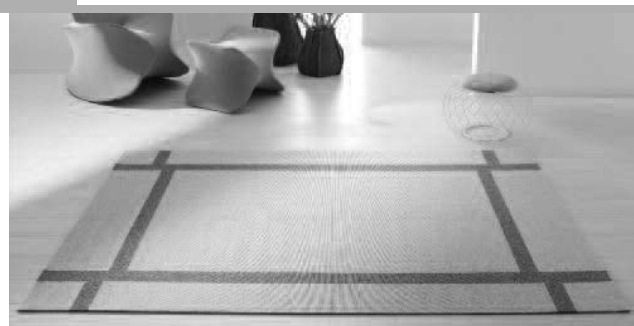
**Tretford Interart Contract Rugs**

**Special Designs** Please apply for a quote

Tretford Interart bespoke rugs are available Special Order only.

Each rug will be priced individually. Prices vary dependant on the number of colours used and complexity of the design. Please call for a brochure or look at our website [www.tretford.co.uk](http://www.tretford.co.uk)

The average price for a rug is £85.00m<sup>2</sup>



**Tretford Acousticord**

Acoustic Wall Coverings

Width m	Total Weight g/m <sup>2</sup>	Backing	Roll Price £m <sup>2</sup>	Cut Length Price £m <sup>2</sup>
2m	2,650	Jute	£23.00	£25.00

Special Order only.



# impervious cut pile

	Width m	Pile Weight g/m <sup>2</sup>	Backing	Splitting Service	Guarantee	Roll Price £m <sup>2</sup>	Cut Length Price £m <sup>2</sup>
<b>Hospi-Classic Plus</b> Twist Pile - 100% Polypropylene	4.00	1,250	Impervious Gel	Y	7 Years	10.95	12.75
<b>Hospi-Design – Pindot</b> Cut Pile Graphics - 100% Polypropylene	4.00	600	Impervious Gel	Y	5 Years	10.95	12.75
<b>Hospi-Design – Stripe</b> Cut Pile Graphics - 100% Polypropylene	4.00	550	Impervious Gel	Y	5 Years	10.95	12.75
<b>Hospi-Elegance</b> Cut Pile Graphics - 100% Polypropylene	4.00	1,000	Impervious Gel	Y	5 Years	11.95	13.50
<b>Hospi-Lux</b> Cut Pile Graphics - 100% Polypropylene	4.00	780	Impervious Gel	Y	7 Years	14.95	16.95
<b>Hospi-Safe</b> Cut Pile Graphics - 100% Polypropylene	4.00	730	Impervious Gel	Y	5 Years	11.95	13.50
<b>Hospi-Style</b> Twist Pile Graphics - 100% Polypropylene	4.00	1,080	Impervious Gel	Y	7 Years	12.95	14.50
<b>Hospi-Super</b> Cut Pile Graphics - 100% Polypropylene	4.00	1,150	Impervious Gel	Y	7 Years	13.35	14.75
<b>Hospi-Tones</b> Twist Pile - 100% Polypropylene	4.00	1,050	Impervious Ecofelt	Y	10 Years	16.20	18.25
<b>Hospi-Twist</b> Twist Pile - 100% Polypropylene	4.00	950	Impervious Gel	Y	10 Years	15.30	17.50
<b>Universal Care</b> Twist Pile - 100% Polypropylene	4.00	1,000	Impervious Gel	Y	7 Years	13.95	15.95
<b>Universal Lite</b> 100% Polypropylene - Anti-microbial	4.00	1,000	Impervious Foam	Y	10 Years	16.20	18.25
<b>Universal Living</b> Twist Pile - 100% Polypropylene	4.00	900	Impervious Gel	Y	7 Years	13.75	14.95
<b>Universal Plain</b> 100% Polypropylene - Anti-microbial	4.00	950	Impervious Foam	Y	10 Years	16.20	18.25

(Continued)

## Splitting Service

4

On products marked “Y” JHS offer a service to split your order to 2m. Both sides of the split roll have to be delivered. Returns after splitting are not accepted.

## impervious cut pile (continued)



	Width m	Pile Weight g/m <sup>2</sup>	Backing	Splitting Service	Guarantee	Roll Price £m <sup>2</sup>	Cut Length Price £m <sup>2</sup>
<b>Universal Plus</b> 100% Solution Dyed Nylon - Anti-microbial	4.00	950	Impervious Foam	Y	15 Years	17.50	18.95
<b>Universal Royale</b> Twist Pile - 75% Polypropylene / 25% Nylon	4.00	1,220	Impervious Foam	Y	10 Years	13.95	14.95
<b>Universal Tones</b> 100% Polypropylene - Anti-microbial	4.00	1,000	Impervious Foam	Y	10 Years	16.20	18.25

## impervious loop pile

	Width m	Pile Weight g/m <sup>2</sup>	Backing	Splitting Service	Guarantee	Roll Price £m <sup>2</sup>	Cut Length Price £m <sup>2</sup>
<b>Hospi-Guard II</b> Loop Pile Graphics - 66% Polypropylene / 34% Nylon	4.00	600	Impervious Gel	Y	7 Years	10.75	12.50
<b>Hospi-Loop II</b> Loop Pile - 100% Polypropylene	4.00	600	Impervious Gel	Y	7 Years	8.35	9.50


### Splitting Service

On products marked "Y" JHS offer a service to split your order to 2m. Both sides of the split roll have to be delivered. Returns after splitting are not accepted.

		Tile Size cm	Pile Weight g/m <sup>2</sup>	Backing	Guarantee	No Tiles per Box Split Box Y/N	Price Per m <sup>2</sup>	Price Per Tile
<b>Trefford Ecoback Tile</b> 70% Animal Hair / 30% Nylon		50 x 50	1,200	Ecoback	5 Years	20 Y	30.40	7.60
<b>Arizona II Tile</b> Barrier Matting Tile - 100% Nylon with raised scraper filament		50 x 50	900	Bitumen	10 Years	20 Y	21.40	5.35
<b>Astor</b> (for fitting see A4 folder) Structured Loop Pile - 100% Polypropylene		50 x 100	610	Bitumen	7 Years	10 N	9.96	2.49
<b>Brindisi</b> Loop Pile - 100% Nylon		50 x 50	530	Bitumen	10 Years	20 Y	15.48	3.87
<b>Buffalo</b> Needlefelt Barrier Matting Tile - 100% Polypropylene		50 x 50	1,400	Bitumen	5 Years	20 Y	12.20	3.05
<b>Candidate</b> Rib/Velour Fibrebonded - 100% Polypropylene		50 x 50	500	Bitumen	5 Years	20 N	7.80	1.95
<b>Cityspire</b> Structured Loop Pile - 100% Polypropylene		50 x 50	610	Bitumen	7 Years	20 Y	9.96	2.49
<b>Commodore</b> (for fitting see A4 folder) Loop Pile - Structured 100% Polypropylene		50 x 100	800	Recycled PVC	7 Years	10 N	14.50	7.25
<b>Impressions</b> (for fitting see A4 folder) Loop Pile - Structured 100% Polypropylene		50 x 100	780	Recycled PVC	7 Years	10 N	14.50	7.25
<b>Lexington</b> Structured Loop Pile - 100% Polypropylene		50 x 50	610	Bitumen	7 Years	20 Y	9.96	2.49
<b>Lucca</b> Needle Rib - 100% Polypropylene		50 x 50	830	Bitumen	10 Years	20 N	10.00	2.50
<b>Mainstay</b> Loop Pile - 100% Polypropylene (Fast Track Colours Available)		50 x 50	580	Bitumen	5 Years	20 N	10.80	2.70

(Continued)

## carpet tiles (continued)

	Tile Size cm	Pile Weight g/m <sup>2</sup>	Backing	Guarantee	No Tiles per Box Split Box Y/N	Price Per m <sup>2</sup>	Price Per Tile
<b>Manuscript</b> (for fitting see A4 folder) Loop Pile - Structured 100% Polypropylene	50 x 100	800	Recycled PVC	7 Years	10 N	14.50	7.25
<b>Mutual II</b> Loop Pile - 100% Meraklon Polypropylene	50 x 50	680	Bitumen	5 Years	20 Y	15.40	3.85
<b>Paramount</b> Structured Loop Pile - 100% Polypropylene	50 x 50	610	Bitumen	7 Years	20 Y	9.96	2.49
<b>Perception</b> Loop Pile - 100% Nylon	50 x 50	700	PVC	10 Years	20 Y	19.20	4.80
<b>Pinstripe</b> Loop Pile - 100% Solution Dyed Nylon <b>(Fast Track Colours Available)</b>	50 x 50	550	Bitumen	10 Years	20 N	18.40	4.60
<b>Rimini</b> Loop Pile - 100% Polypropylene <b>(Fast Track Colours Available)</b>	50 x 50	390	Bitumen	5 Years	20 N	9.40	2.35
<b>Rimini Stripe</b> Loop Pile - 100% Polypropylene  Quarter turn only	50 x 50	390	Bitumen	5 Years	20 N	10.40	2.60
<b>Runway Solid</b> Loop Pile - 100% Space Dyed Nylon	50 x 50	500	Bitumen	10 Years	20 Y	12.96	3.24
<b>Runway Lines</b> Loop Pile - 100% Space Dyed Nylon	50 x 50	680	Bitumen	10 Years	20 Y	14.20	3.55
<b>Taunton</b> Loop Pile - 100% Solution Dyed Nylon	50 x 50	750	Bitumen	10 Years	20 N	16.80	4.20
<b>Tornado</b> Barrier Matting Tile - 100% Nylon with raised scraper filament	50 x 50	1,150	Bitumen	10 Years	20 Y	18.80	4.70
<b>Triumph Cut Pile</b> Cut Pile - 100% Solution Dyed Nylon	50 x 50	800	Bitumen	10 Years	20 Y	15.96	3.99

(Continued)

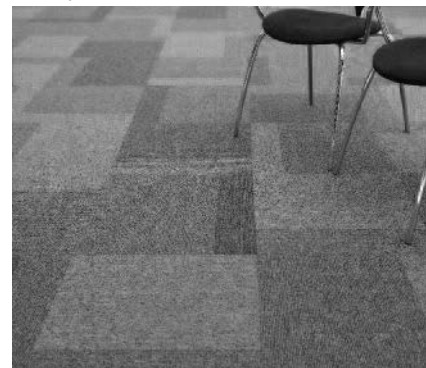
## carpet tiles (continued)

	Tile Size cm	Pile Weight g/m <sup>2</sup>	Backing	Guarantee	No Tiles per Box Split Box Y/N	Price Per m <sup>2</sup>	Price Per Tile
<b>Triumph Loop Pile</b> Loop Pile - 100% Solution Dyed Nylon (Fast Track Colours Available)	50 x 50	500	Bitumen	10 Years	20 Y	11.40	2.85
<b>Triumph Lines</b> Loop Pile - 89% Solution Dyed Nylon / 11% Space Dyed Nylon	50 x 50	500	Bitumen	10 Years	20 Y	12.40	3.10
<b>Triumph Random</b> (for fitting see A4 folder) Loop Pile - 100% Solution Dyed Nylon	50 x 50	500	Bitumen	10 Years	20 Y	12.40	3.10
<b>Triumph Stripe</b> Loop Pile - 100% Solution Dyed Nylon  Quarter turn only	50 x 50	500	Bitumen	10 Years	20 Y	11.80	2.95
<b>Turnpike</b> Cut and Uncut 100% Polypropylene	50 x 50	800	Recycled PVC	7 Years	20 N	14.50	7.25
<b>Verona</b> Loop Pile - 100% Polypropylene	50 x 50	600	Bitumen	5 Years	20 N	10.80	2.70
<b>Westbury</b> Loop Pile - 100% Nylon	50 x 50	600	PVC	10 Years	20 Y	19.20	4.80

Triumph Lines



Triumph Random



# cut pile

	Width m	Pile Weight g/m <sup>2</sup>	Backing	Splitting Service	Guarantee	Roll Price £m <sup>2</sup>	Cut Length Price £m <sup>2</sup>
<b>Ballantrae Plus</b> Graphics - 70% Polypropylene / 30% Nylon	4.00	850	Secondary	Y	10 Years	13.95	15.50
<b>Epsom SD Cut</b> Cut Pile Graphics - 100% Econyl Recycled Nylon	4.00	830	Secondary	Y	10 Years	14.95	16.50
<b>Freelance</b> Graphics - 100% Nylon	4.00	880	Secondary	Y	10 Years	16.95	18.20
<b>Garda Plus</b> Cut Pile - 100% Nylon	4.00	790	Secondary	Y	10 Years	13.95	15.50
<b>Milan Plus</b> 85% Solution Dyed Nylon / 15% Space Dyed Nylon	4.00	675	Contract Felt	Y	10 Years	13.95	15.50
<b>Ottawa</b> Cut Pile Graphics - 100% Strudon IV Polypropylene	3.66	1,017	Secondary	N	10 Years	12.75	14.20
<b>Plaza</b> 25% Solution Dyed Nylon / 75% Polypropylene	4.00	1,220	Secondary	Y	10 Years	12.75	13.95
<b>Signature II</b> Cut Pile Graphics - 100% Nylon	4.00	830	Secondary	Y	10 Years	14.75	15.95
<b>Venice Plus</b> Cut Pile Graphics - 100% Polypropylene	4.00	700	Gel	Y	5 Years	8.35	9.75
<b>Venice Plus Action Back</b> Cut Pile - 100% Polypropylene	4.00	700	Action	Y	5 Years	6.95	7.95

## Splitting Service

On products marked "Y" JHS offer a service to split your order to 2m. Both sides of the split roll have to be delivered. Returns after splitting are not accepted.

# loop pile

	Width m	Pile Weight g/m <sup>2</sup>	Backing	Splitting Service	Guarantee	Roll Price £m <sup>2</sup>	Cut Length Price £m <sup>2</sup>
<b>Amalfi</b> Loop Pile - 100% Solution Dyed Nylon	4 & 5.00	550	Secondary	Y (4m only)	10 Years	8.95	10.50
<b>Bureau</b> Loop Pile - Structured 100% Solution Dyed Nylon	4.00	680	Duraflex Secondary	Y	10 Years	10.95	12.60
<b>Epsom SD Loop</b> Loop Pile Graphics - 100% Econyl Recycled Nylon	4.00	830	Secondary	Y	10 Years	14.95	16.50
<b>Conquest Lines</b> Loop Pile - Structured 100% Polypropylene	4.00	700	Duraflex Secondary	Y	5 Years	7.75	8.95
<b>Hawthorn II</b> 100% Polypropylene	4.00	700	Secondary	Y	5 Years	6.45	7.75
<b>Heritage Loop</b> 100% Solution Dyed Nylon	4.00	730	Secondary	Y	10 Years	11.70	13.20
<b>Mutual</b> 100% Polypropylene (Also available in Tiles: See Tile Section)	4.00	700	EasiFit Gel	Y	5 Years	8.95	10.95
<b>Tweed</b> 89% Nylon Textured Loop / 11% Polypropylene	4 & 5.00	680	Secondary	Y (4m only)	10 Years	11.30	12.90



## Splitting Service

On products marked "Y" JHS offer a service to split your order to 2m. Both sides of the split roll have to be delivered. Returns after splitting are not accepted.

	Width m	Pile Weight g/m <sup>2</sup>	Backing	Splitting Service	Guarantee	Roll Price £m <sup>2</sup>	Cut Length Price £m <sup>2</sup>
<b>Baccarat</b> Cut & Loop Pile - 100% Nylon	4.00	1,300	Secondary	Y	10 Years	17.95	20.50
<b>Balmoral II</b> Cut & Loop Pile - 100% Nylon	4.00	1,300	Secondary	Y	10 Years	18.30	20.35
<b>Highfields</b> 100% Econyl Recycled Nylon	4.00	1,100	Secondary	Y	10 Years	17.40	20.50
<b>Matrix</b> Graphics - 100% Nylon	4.00	900	Secondary	Y	10 Years	18.25	19.80
<b>Palmera Plus</b> Cut Pile - 100% Nylon	4.00	1,070	Secondary	Y	10 Years	17.40	20.50
<b>Prime Contender Design 1</b> Cut Pile - 100% Nylon	4.00	950	Secondary	Y	10 Years	19.95	22.95
<b>Prime Contender Design 2</b> Cut Pile - 100% Nylon	4.00	1,020	Secondary	Y	10 Years	19.95	22.95
<b>Vancouver Plus</b> P.C.U - 100% Dupont Antron XL Stain Protector Nylon	4.00	1,200	Secondary	Y	10 Years	19.95	22.95
<b>Vintage Plus</b> 100% Solution Dyed Nylon Loop Pile Woven Wilton	4.00	608	Woven	Y	15 Years	13.75	14.95

**Splitting Service**

**11** On products marked "Y" JHS offer a service to split your order to 2m. Both sides of the split roll have to be delivered. Returns after splitting are not accepted.

## indoor/outdoor grass

	Width m	Pile Height g/m <sup>2</sup>	Backing	Splitting Service	Guarantee	Roll Price £m <sup>2</sup>	Cut Length Price £m <sup>2</sup>
<b>Outdoor Sheet</b> 100% Polypropylene - UV Stabilised Outdoor Grass.	2.00 & 4.00		Black Latex	Y	5 Years	7.75	8.91
<b>Turf – Three</b> 100% Polypropylene - UV Stabilised Outdoor Grass.	2.00 & 4.00	20mm	Black Latex	Y	5 Years	9.50	10.95
<b>Turf – Four</b> 100% Polypropylene - UV Stabilised Outdoor Grass.	2.00 & 4.00	26mm	Black Latex	Y	5 Years	10.95	12.50
<b>Turf – Five</b> 100% Polypropylene - UV Stabilised Outdoor Grass.	2.00 & 4.00	30mm	Black Latex	Y	5 Years	12.50	14.40
<b>Turf – Six</b> 100% Polyethylene - UV Stabilised Outdoor Grass.	2.00 & 4.00	32mm	Black Latex	Y	5 Years	14.35	16.50

## spike proof



	Width m	Pile Weight g/m <sup>2</sup>	Backing	Splitting Service	Guarantee	Roll Price £m <sup>2</sup>	Cut Length Price £m <sup>2</sup>
<b>Albatross II</b> 100% Strudon IV Polypropylene	3.66	1,695	Secondary	N	5 Years	22.95	26.50
<b>Fairmont</b> 80% Wool / 20% Nylon Axminster	4.00	952	Woven	Y	7 Years	27.50	29.95
<b>Finsbury Park</b> 80% Wool / 20% Nylon Axminster	4.00	1,070	Woven	Y	10 Years	29.50	32.75
<b>Metropol</b> Wilton - 100% Polypropylene	4.00	2,300	Woven	Y	5 Years	20.95	22.50
<b>Park Royal</b> Wilton - 100% Polypropylene	4.00	1,800	Woven	Y	5 Years	16.20	18.50

## entrance matting collection

	Width m	Pile Weight g/m <sup>2</sup>	Backing	Total Thickness	Guarantee	Roll Price £m <sup>2</sup>	Cut Length Price £m <sup>2</sup>
<b>Arizona II</b> Barrier Matting - 100% Nylon with raised scraper filament. (Also available in Tiles: See Tile Section)	2.00	900	PVC	8.50mm	10 Years	25.70	29.20
<b>Brossmat</b> 100% Polypropylene	2.00	1,700	Waffle	13.00mm	8 Years	13.20	15.50
<b>Dakota</b> 100% Polypropylene Needle-punch	2.00	700	Duoback	7.60mm	5 Years	6.75	7.75
<b>Dino - Mat</b> 100% Nylon Graphics Soil Removal Zone Carpet	2.00	780	PVC	7.50mm	5 Years	19.60	21.40
<b>Geneva</b> Rib - 100% Polypropylene	2.00	1,150	Waffle	11.00mm	8 Years	9.40	10.70
<b>Tornado</b> Barrier Matting - 100% Nylon with raised scraper filament. (Also available in Tiles: See Tile Section)	2.00	750	PVC	8.00mm	8 Years	21.95	23.95
<b>Trio - Mat</b> Nylon and Polypropylene Scraper Entrance Matting	2.00	2,050	Latex	12.80mm	5 Years	45.35	49.45
<b>Trio - Plus</b> Nylon and Polypropylene Scraper Entrance Matting	2.00	2,790	Latex	15.00mm	5 Years	49.45	51.25
<b>Zermat Hobnail</b> Heavy Rib - 100% Polypropylene	2.00	1,200	Waffle	11.00mm	8 Years	9.40	10.70
<b>Zermat Wave</b> Chevron - 100% Polypropylene	2.00	1,200	Waffle	11.00mm	8 Years	9.40	10.70



## fibrebonded sheet

	Width m	Pile Weight g/m <sup>2</sup>	Backing	Splitting Service	Guarantee	Roll Price £m <sup>2</sup>	Cut Length Price £m <sup>2</sup>
<b>Como III</b> 100% Polypropylene	4.00	720	Gel	N	5 Years	5.95	6.85
<b>Fast Track Cord</b> 80% Polypropylene / 20% Nylon	2.00	800	Latex	N	7 Years	5.95	6.85

## house builder

	Width m		Backing	Splitting Service		Roll Price £m <sup>2</sup>	Cut Length Price £m <sup>2</sup>
<b>Armitage</b> Loop Pile Basket Weave, 100% Wool	4.00 & 5.00		Secondary	N		9.10	10.35
<b>Bromley Twist Standard</b> Twist - 50% Wool / 50% Polypropylene	4.00 & 5.00		Secondary	N		7.95	8.95
<b>Bromley Twist Super</b> Twist - 50% Wool / 50% Polypropylene	4.00 & 5.00		Secondary	N		9.35	10.50
<b>Bromley Heathers</b> Twist - 50% Wool / 50% Polypropylene	4.00 & 5.00		Secondary	N		10.25	11.80
<b>Drayton Twist</b> Twist - 100% Polypropylene	4.00 & 5.00		Secondary	N		4.95	5.80
<b>Elford Twist Standard</b> Twist - 80% Wool / 20% Synthetic	4.00 & 5.00		Secondary	N		7.95	8.95
<b>Elford Twist Super</b> Twist - 80% Wool / 20% Synthetic	4.00 & 5.00		Secondary	N		9.30	10.60

(Continued)

## house builder (continued)

	Width m	Backing	Splitting Service	Roll Price £m <sup>2</sup>	Cut Length Price £m <sup>2</sup>
<b>Elford Twist Premier</b> Twist - 80% Wool / 20% Synthetic	4.00 & 5.00	Secondary	N	10.85	12.95
<b>Haywood Twist Standard</b> Twist - 80% Wool / 20% Polypropylene	4.00 & 5.00	Secondary	N	9.80	10.95
<b>Haywood Twist Super</b> Twist - 80% Wool / 20% Polypropylene	4.00 & 5.00	Secondary	N	11.75	13.45
<b>Haywood Twist Premier</b> Twist - 80% Wool / 20% Polypropylene	4.00 & 5.00	Secondary	N	12.95	14.85
<b>Haywood Twist Ultimate</b> Twist - 80% Wool / 20% Polypropylene	4.00 & 5.00	Secondary	N	14.50	16.75
<b>Longdon Twist Standard</b> Twist - 80% Wool / 20% Synthetic	4.00 & 5.00	Secondary	N	8.80	9.95
<b>Longdon Twist Super</b> Twist - 80% Wool / 20% Synthetic	4.00 & 5.00	Secondary	N	10.25	11.40
<b>Longdon Twist Premier</b> Twist - 80% Wool / 20% Synthetic	4.00 & 5.00	Secondary	N	11.99	13.75



## hotel & leisure

	Width m	Pile Weight g/m <sup>2</sup>	Backing	Splitting Service	Guarantee	Roll Price £m <sup>2</sup>	Cut Length Price £m <sup>2</sup>
<b>Fairmont</b> 80% Wool / 20% Nylon Axminster	4.00	952	Woven	Y	7 Years	27.50	29.95
<b>Finsbury Park</b> 80% Wool / 20% Nylon Axminster	4.00	1,070	Woven	Y	10 Years	29.50	32.75
<b>Metropol</b> Wilton - 100% Polypropylene	4.00	2,300	Woven	Y	5 Years	20.95	22.50
<b>Park Royal</b> Wilton - 100% Polypropylene	4.00	1,800	Woven	Y	5 Years	16.20	18.50

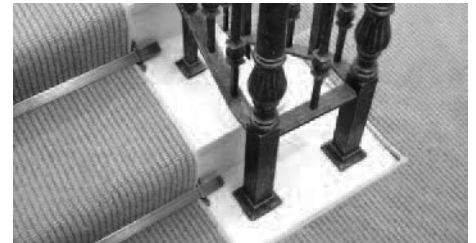
## custom print



Print Collection using Cromojet deep jet printing.

	Pile Weight g/m <sup>2</sup>	Backing	Stock Collection		Special Order Custom Designs	
			Roll m <sup>2</sup>	Cut m <sup>2</sup>	500+ m <sup>2</sup>	100 - 499m <sup>2</sup>
100% Nylon. 2 Ply. Cut Pile.	1,200	Secondary	15.95	18.25	16.75	20.50

Custom designs have a minimum cost size of 100m<sup>2</sup>.  
 Maximum tolerance for overage is +/- 5% for 100m<sup>2</sup> - 499m<sup>2</sup>  
 and +/- 3% for 500m<sup>2</sup> and above.  
 Cancellation after production has begun will be subject to a  
 100% cancellation charge as per our terms and conditions of sale.



# multifloor underlay systems

	Thickness m	Roll size	Cut Length £/m <sup>2</sup>	Roll Price	Tog Rating
<b>Tiles (low grab)</b>	3mm	15m <sup>2</sup>	4.70	70.50	0.60
	5mm	10m <sup>2</sup>	6.30	63.00	0.83

Up to 80% recycled crumb rubber with non-woven polypropylene backing

<b>Broadloom (high grab)</b>	3mm	15m <sup>2</sup>	4.90	73.50	0.60
	5mm	10m <sup>2</sup>	6.50	65.00	0.83

Up to 80% recycled crumb rubber with non-woven polypropylene backing

## Why use Multifloor?

### Tiles (low grab)

- High sound absorption properties
- No re-screeding required
- Greater underfoot comfort
- Installation speed

### Broadloom (high grab)

- Cost-effective double stick installation
- High sound absorption properties
- Greater underfoot comfort
- Installation speed



<b>Luxury Vinyl Plank</b>								
<b>Gallery Plus Plank</b>		<b>Size</b>	<b>Thickness</b>	<b>Guarantee</b>	<b>Pack Size</b>	<b>£ per m<sup>2</sup></b>		
Luxury vinyl wood effect planks		7 <sup>3</sup> / <sub>4</sub> " x 4' 4"	2.5mm (0.55 wear layer)	20 Years	14	12.60		
		(196mm x 1320mm)	(PU coated with bevelled edge)					
<b>Gallery Plus Stone</b>		2' 2" x 1' 1"	2.5mm (0.55 wear layer)	20 Years	16	12.60		
Luxury vinyl wood effect stone		(659mm x 329mm)	(PU coated with bevelled edge)					
<b>Gallery Plus Click Plank</b>		7.5" x 4' 3 <sup>3</sup> / <sub>4</sub> "	4.5mm (0.55 wear layer)	20 Years	7	19.95		
PVC Click loose lay fully flexible wood planks		(191mm x 1316mm)	(PU coated with bevelled edge)					
<b>Gallery Plus Click Stone</b>		2' 1 <sup>3</sup> / <sub>4</sub> " x 1' 3 <sup>3</sup> / <sub>4</sub> "	4.5mm (0.55 wear layer)	20 Years	7	19.95		
PVC Click loose lay fully flexible wood stone		(655mm x 324mm)	(PU coated with bevelled edge)					
<b>Endurance Vinyl Sheet</b>	<b>Roll Width</b>	<b>Wear Layer</b>	<b>Slip Rating</b>	<b>Splitting Service</b>	<b>Guarantee</b>	<b>Roll Price</b>	<b>Cut Price</b>	
<b>Endurance Plus</b>	2 & 4m	0.55	R10	N	12 Years	9.25	10.75	
2mm Vinyl Sheet								
<b>Endurance Acoustic</b>	2 & 4m	0.50	R10	N	10 Years	8.25	9.75	
3mm Vinyl Sheet								
<b>Endurance Invisible Weld Starter Kit</b>								114.00
Includes 100LM of weld, rolling knife, Janser knife, blades, 2 rolls of masking tape								
<b>Endurance Invisible Weld Tubes</b>		<b>1-4 tubes/rolls</b>		<b>5-9 tubes/rolls</b>		<b>10 or more tubes/rolls</b>		
Sufficient for 60LM of welded join		13.50 each		13.00 each		12.50 each		
<b>Endurance Weld Rods</b>								£27.95
100LM								
<b>Safety Alpha</b>	<b>Roll Width</b>	<b>Thickness</b>	<b>Slip Rating</b>	<b>Guarantee</b>	<b>Roll Size</b>	<b>Roll Price</b>	<b>Cut Price</b>	<b>Weld Rod</b>
2.0mm Safety Floor	2m	2.0mm	R11	10 Years	20m	8.50	9.95	80LM
<b>Safety Alpha Plus</b>	2m	2.0mm	R11	10 Years	20m	9.95	10.95	23.75
2.0mm PVC Safety Floor		0.7WL						
<b>Supa - Lock Tiles</b>		<b>Size cm</b>	<b>Thickness</b>	<b>Guarantee</b>	<b>Pack Size</b>	<b>£ per m<sup>2</sup></b>		
<b>Supa Lock 5mm</b>		50 x 50	5mm	20 Years	12 Tiles per box	28.20		
<i>Supa-Lock tile loose lay flexible PVC interlocking tiles (Butterfly Joint)</i>								
<b>Supa Lock 6mm</b>		50 x 50	6mm	20 Years	10 Tiles per box	28.20		
<i>Supa-Lock tile loose lay flexible PVC interlocking tiles (Hidden Joint)</i>								
<b>Supa Lock Industrial</b>		50 x 50	7mm	20 Years	10 Tiles per box	29.50		
<i>Hard compound for use in industrial areas (T-Joint)</i>								
<b>Note</b> - When using Supa Lock Industrial tiles in areas where wheeled traffic is in use, refer to the A4 folder for installation instructions.								
<b>Supa Lock Ramp Edges</b>		50 x 9	7 mm	20 Years	4 per pack	12.00	per pack	
<b>Supa Lock Ramp Corners</b>		60 x 9	7 mm	20 Years	4 per pack	12.00	per pack	
<b>Note</b> - Ramps and corners may not colour match tiles. We suggest contrasting colour are used.								



## Recycling of Supa-lock tiles

JHS **guarantee** to collect used **Supa Lock Tiles** at the end of their life and re-cycle them into new supa lock tiles. The tiles, once uplifted will be collected **free of charge** and returned to our re-cycling facility. JHS is committed to sustaining the environment and will strive to take responsible visible decisions in an effort towards continual improvement.

## Responsibility

- As a company we take responsibility for products and services we offer with regard to the effect they have on the environment.
- As a Company we will commit to minimise the impact of our commercial and industrial activities on the environment.

## TERMS OF TRADING

**PRICE LIST** This price list is intended for the trade and is issued to regular carpet dealers (to whom alone goods are supplied) with the request that it should not fall into other hands. All previous lists are cancelled.

**PLACING OF ORDER** Nothing in this price list shall be deemed to constitute an offer, and the Company reserves the right to refuse or accept any order. Placing of an order implies the acceptance of these terms of trading.

**ORDER CONFIRMATIONS** To avoid duplications please do not send confirmation of orders telephoned to us unless they are clearly marked "CONFIRMATION ONLY".

**PRICES** Prices are subject to alteration without notice and are applied at the rate ruling at the date of dispatch. Excluded from this are bona fide contract orders accepted and acknowledged by us as being at a fixed price.

**VALUE ADDED TAX** Prices quoted in this list do not include Value Added Tax which will be charged at the applicable rate at the date of supply.

**TERMS OF PAYMENT** Payment is due on the 20th of the month following date of invoice and is subject to 2.5% cash discount on the net value of the goods (exclusive of VAT) if paid by the due date. The Company reserves the right to charge Bank Fees associated with any Specially presented, Uncleared or Re-presented cheques. Settlement discount is not allowable on pro-forma orders.

**INTEREST CLAUSE** In the event of a Customer failing to make payment to this Company under the Terms of Payment above, interest shall accrue and be paid by the purchaser on all unpaid sums and invoices at the rate of 2% above the Barclays Bank Plc base rate.

**PIECE LENGTHS** Roll price is only given on uncut rolls; when an exact length is specified the cut length price will apply. Rolls are assumed to be over 25.00 linear metres by the width.

**CARRIAGE** Goods delivered to dealers premises by the Company's appointed carriers are carriage paid. The costs involved for requested special deliveries will be charged.

**DELIVERY** Every effort will be made to execute orders promptly, the Company will not accept liability for consequential loss arising from production or delivery delay of any sort.

**RESERVED STOCK** Stock will be held against an order for a maximum period of 3 months without a confirmed delivery date.

**ACCESS TO SITE** In the event of access to the place of delivery being unobtainable the right is reserved to charge all costs incurred in any abortive visit, or any additional visit, to the customer.

**CANCELLATIONS** Cancellations or alterations cannot be accepted once a carpet has been cut to dealers original specifications. Cancellations by telephone cannot be accepted unless confirmed in writing without delay. Cancellations after cutting will be subject to 20% restocking charge. Cancellation of large contract or orders for special or bespoke products will be subject to a 100% cancellation charge, if the order is cancelled after production has begun. Stock of large contract, special or bespoke products will only be held for a maximum of 12 weeks before delivery or payment in full must be made. (Large contract orders are defined as orders for more than 3 months average sales) (Special or bespoke products are defined as product made to a customers specific design or products not normally sold or held in stock).

### CLAIMS AND RETURNS

a) Carpets should be inspected by dealers before cutting to custom fit an area. Claims for manufacturing faults which the dealers could have discovered by a careful inspection before cutting cannot be accepted after carpet has been cut and laid. No complaint can be considered which arises from improper installation.

b) No other complaint can be considered until merchandise has been examined by the dealer and a report submitted on our official complaint form.

c) No goods sold to dealers may be returned without written consent of the Company.

d) Goods returned to us for credit because of dealers error will only be credited at the actual resale value obtained by the Company. This includes returns arising from duplication of orders due to failure of dealers to mark confirmation orders as such.

e) Carpets sold as imperfect will not be considered as the subject for any complaint.

f) The Company cannot accept any liability for the cost of uplifting or refitting carpet, or other types of floor-covering, in any circumstances unless the fault in the goods is one that could not be discovered by inspection before cutting or laying.

g) The Company does not accept any liability for consequential loss due to defective carpet.

h) The Company will be prepared to accept uplifting & refitting costs to a maximum of £5 m<sup>2</sup> in the event of a floorcovering having deemed to have a fault that could not have been noticed prior to installation.

### DAMAGE OR LOSS IN TRANSIT

a) If goods are damaged in transit the carriers note must be endorsed accordingly and the Company notified within three days of receipt of goods. The Company must also be notified if goods are not received within ten days of date of invoice. Failure to notify in either case will result in loss of any claim.

b) The Company cannot accept any consequential losses due to damage or loss in transit.

**SIZES** Whilst every effort is made to manufacture to the correct size, variations are unavoidable. The British Standards Institute tolerance is + or - 1.25% either way. Clause 3 BS.3655. Any claim for tolerance in width or length outside 1.25% can only be considered after inspection of the carpet by a representative of the Company.

**PILE PRESSURE** All pile carpets, especially plain grounds, are liable to shading that is to show light and dark patches arising from unequal crushing of the surface. Light and delicate carpets are liable to become soiled in wear, and so apparently to lose colour. No care on the part of the manufacturers can obviate these tendencies which are inherent in all pile fabrics, nor can we accept any responsibility in connection with same.

**MATCHING** Requests for colour matching must be specifically stated on the order otherwise no claim can be entertained. Colour matching is not offered on 4 & 5m width on same material.

**TECHNICAL DATA** All information contained in the Company's sales literature, sampling and specifications, such as weights and dimensions, is intended to be and may be construed only as of generally informative nature and the same shall not form any part of, or be incorporated in, any way into the contract. JHS reserve the right to alter specifications and discontinue colours or products without prior notice.

**PASSING OF PROPERTY** All goods are at the risk of the customer as soon as they are delivered or collected, but the property and ownership of the goods will not pass until payment in full, of all outstanding invoices, has been received by the Company.

All orders must comply to JHS Conditions of Purchase. Details available on request.

The above Terms and Conditions are a summary of the HFD Ltd full Terms and Conditions of Sale, a copy of which is available on request.

