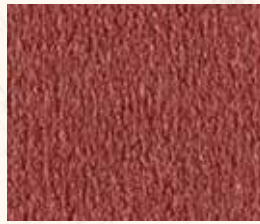




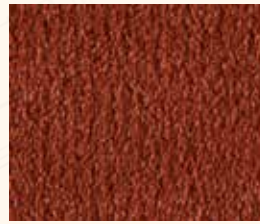
X. KT: PLE.0791



X. KT: PLE.0701



X. KT: PLE.0141



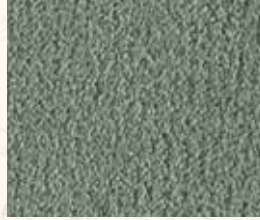
X. KT: PLE.0181



X. KT: PLE.0391



X. KT: PLE.0760



X. KT: PLE.0620



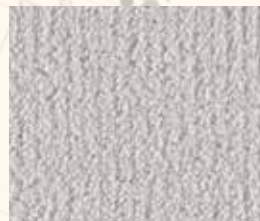
X. KT: PLE.0151



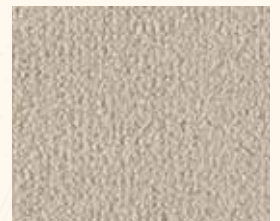
X. KT: PLE.0421



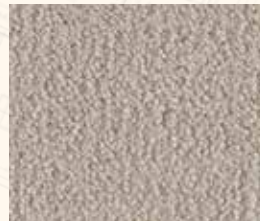
X. KT: PLE.0891



X. KT: PLE.0880



X. KT: PLE.0250



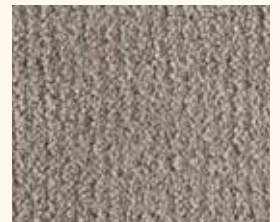
X. KT: PLE.0240



X. KT: PLE.0260



X. KT: PLE.0840



X. KT: PLE.0220



X. KT: PLE.0820



X. KT: PLE.0830



X. KT: PLE.0801



X. KT: PLE.0810



*Pleasure*



**X.**  
A touch of luxury.



*Pleasure*

**Secondary Backing** **KT**  
Rugtype • Envers  
Rücken • Sottofondo • Reverso

**Manufacturing process** **5/64" SAXONY**  
Fabricagemetode • Technique de fabrication  
Herstellungstyp • Tecnica di fabbricazione • Técnica de fabricación

**Pile composition** **PA**  
Poolsamenstelling • Nature du velours  
Polmaterial • Composizione felpa • Composición de pelo

**Primary backing** **woven**  
Tuftdoek • Premier dossier  
Trägermaterial • Tela di supporto • Tela de soporte

**Width** **± 400 & 500 cm**  
Breedte • Largeur  
Breite • Altezza • Ancho

**Effective pile height** **± 9,0 mm**  
Nuttige poolhoogte • Hauteur de velours utile  
Tatsächliche Florhöhe • Spessore felpa utile • Altura de pelo

**Total height** **± 11,5 mm**  
Totale dikte • Hauteur totale  
Gesamthöhe • Spessore totale • Altura total

**Number of knots/sqm** **± 297.360**  
Aantal noppen/m<sup>2</sup> • Nombre de points/m<sup>2</sup>  
Noppenzahl/m<sup>2</sup> • Numero di punti/mq • Puntos de pelo/m<sup>2</sup>

**Pile weight/sqm** **± 1.730 gr**  
Poolinzetgewicht/m<sup>2</sup> • Poids mis en oeuvre/m<sup>2</sup>  
Poleinsatzgewicht/m<sup>2</sup> • Peso felpa/mq • Peso de pelo/m<sup>2</sup>

**Total weight/sqm** **± 2.950 gr**  
Totaal gewicht/m<sup>2</sup> • Poids total/m<sup>2</sup>  
Gesamtwicht/m<sup>2</sup> • Peso totale/m<sup>2</sup> • Peso total/m<sup>2</sup>

**EN 13501-1 Fire behaviour** **B<sub>fl</sub>-s1**  
Brandgedrag • Comportement au feu  
Brennverhalten • Reazione al fuoco • Resistencia al fuego

**EN 1307-2004 Classification** **Class 32**  
Classificatie • Classification  
Klassifizierung • Classificazione • Clasificación al uso  
**Commerical General**

**ISO 140/8 1997 Impact sound insulation** **± 25 dB**  
Contactgeluidsisolatie • Isolation aux bruits d'impact  
Trittschallverbesserungsmaß • Miglioramento acustico • Aislamiento acústico

**DIN 52612 Thermal retention** **± 0,134 m<sup>2</sup>/kW**  
Warmtedoorlaatweerstand • Résistivité thermique  
Wärmedurchlaßwiderstand • Resistenza termica • Resistencia térmica

**TOG Rating** **± 1,34**

**ISO 105 B02 2000 Lightfastness** **≥ 5**  
Lichtechtheid • Solidité à la lumière  
Lichtechtheit • Solidità colori alla luce • Solidez del color a la luz

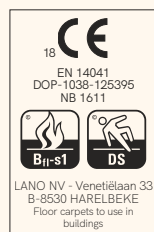
**ISO 105 E01 2002 Waterfastness change in colour** **≥ 3-4**  
Waterechtheid verkleuring • Solidité à l'eau changement couleur  
Wasserechtheit Änderung der Farbe • Solidità colori all'acqua cambio colore  
Solidez color al agua cambio de color

**ISO 105 E01 2002 Waterfastness staining** **≥ 2-3**  
Waterechtheid uitbloeding • Solidité à l'eau dégorgement  
Wasserechtheit anbluten • Solidità colori all'acqua sfumatura colore  
Solidez color al agua pérdida de color

**ISO 105 X12 2001 Rubbingfastness dry** **≥ 3-4**  
Wrijftechtheid droog • Solidité au frottement sec  
Reibungtechtheit trocken • Solidità colori allo sfregamento a secco  
Solidez del color a la frotación en seco

**ISO 105 X12 2001 Rubbingfastness wet** **≥ 3**  
Wrijftechtheid nat • Solidité au frottement humide  
Reibungtechtheit nass • Solidità colori allo sfregamento umido  
Solidez del color a la frotación en húmedo

(a) These details are approximate. Complete specification details and associated certificates together with tolerances applying to the above can be provided upon request. We reserve the right to improve technical specifications without prior notice. Due to method of manufacture perfect pattern and/or colour matching cannot be guaranteed. In cut-pile carpeting, in rare cases, shading/pile reversal may occur without affecting its fitness for use. Shading/pile reversal can not be considered as a manufacturing or a material defect and will not affect the durability of the carpet. For other languages see: [www.lano.com](http://www.lano.com)



**Lano**  
Carpet Solutions

Venetielaan 33 • 8530 Harelbeke-Belgium  
t +32-56-65 40 00  
marketing@lano.be • www.lano.com