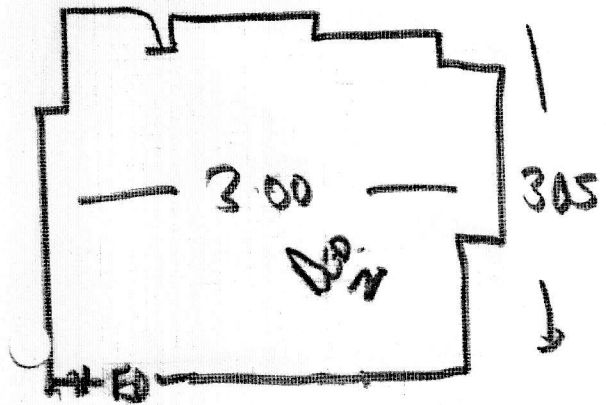
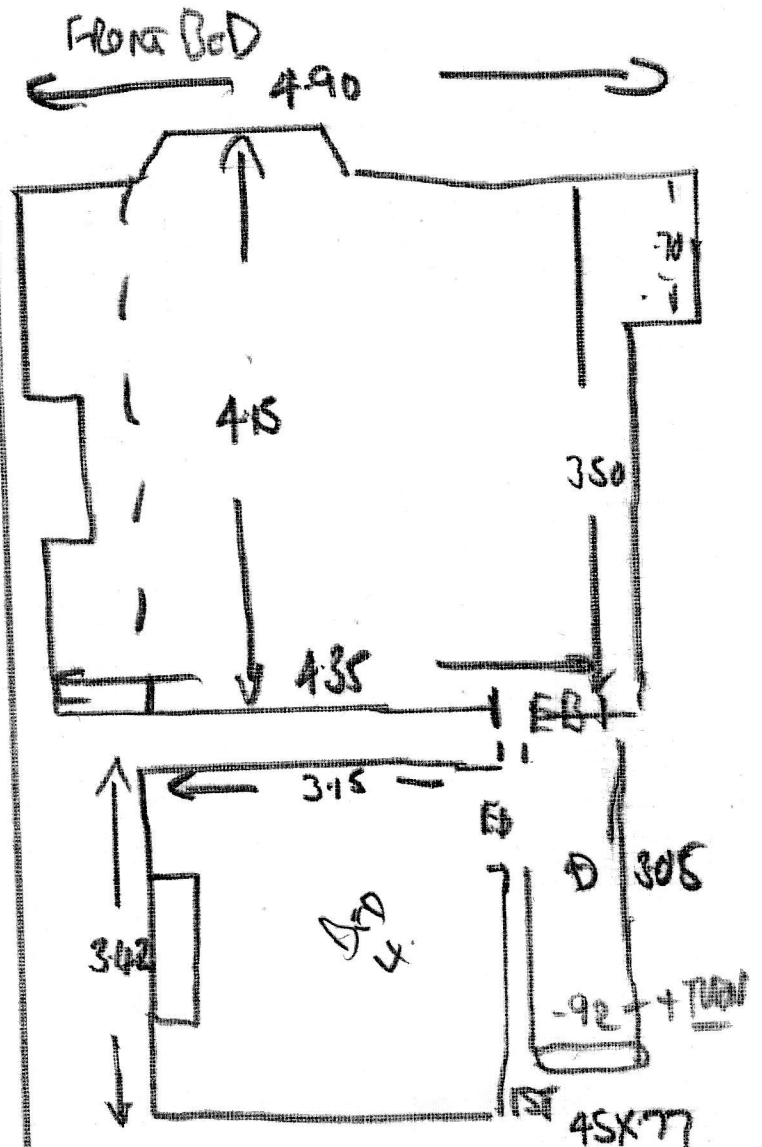
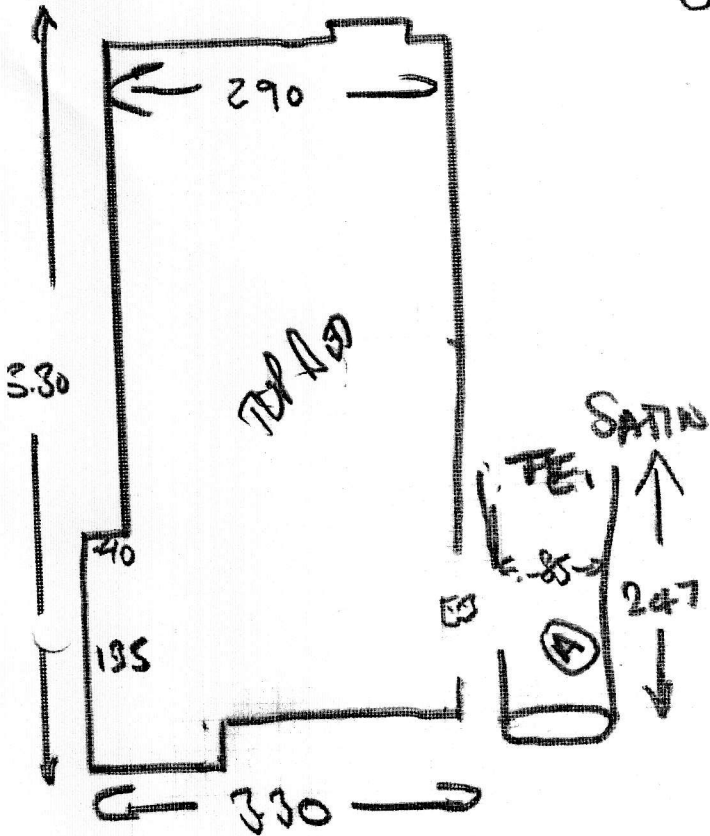


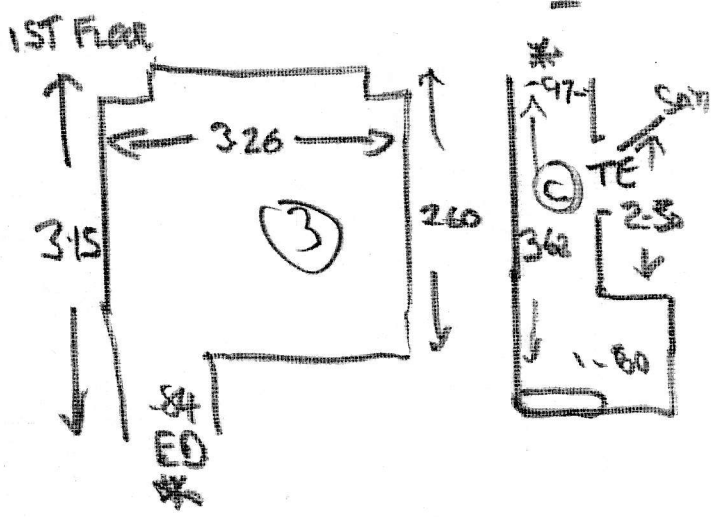
2ND PHASE FITTING

OLD DOWN

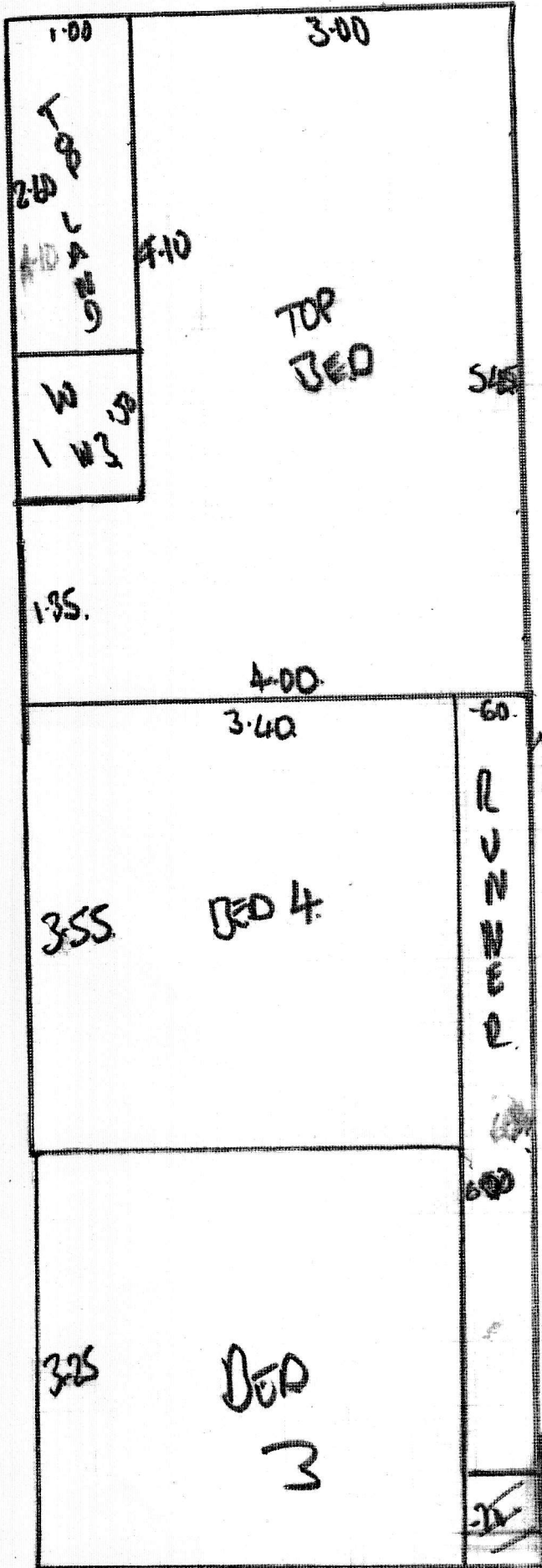
F 25651
 WINDUP
 3 BRANKSEA ST.
 LONDON SW66TT
 07920-082714
 1 3



- ST ⑨ - 45X72
- W1 - 60X85
- W2 - 70X105
- W3 - 75X70

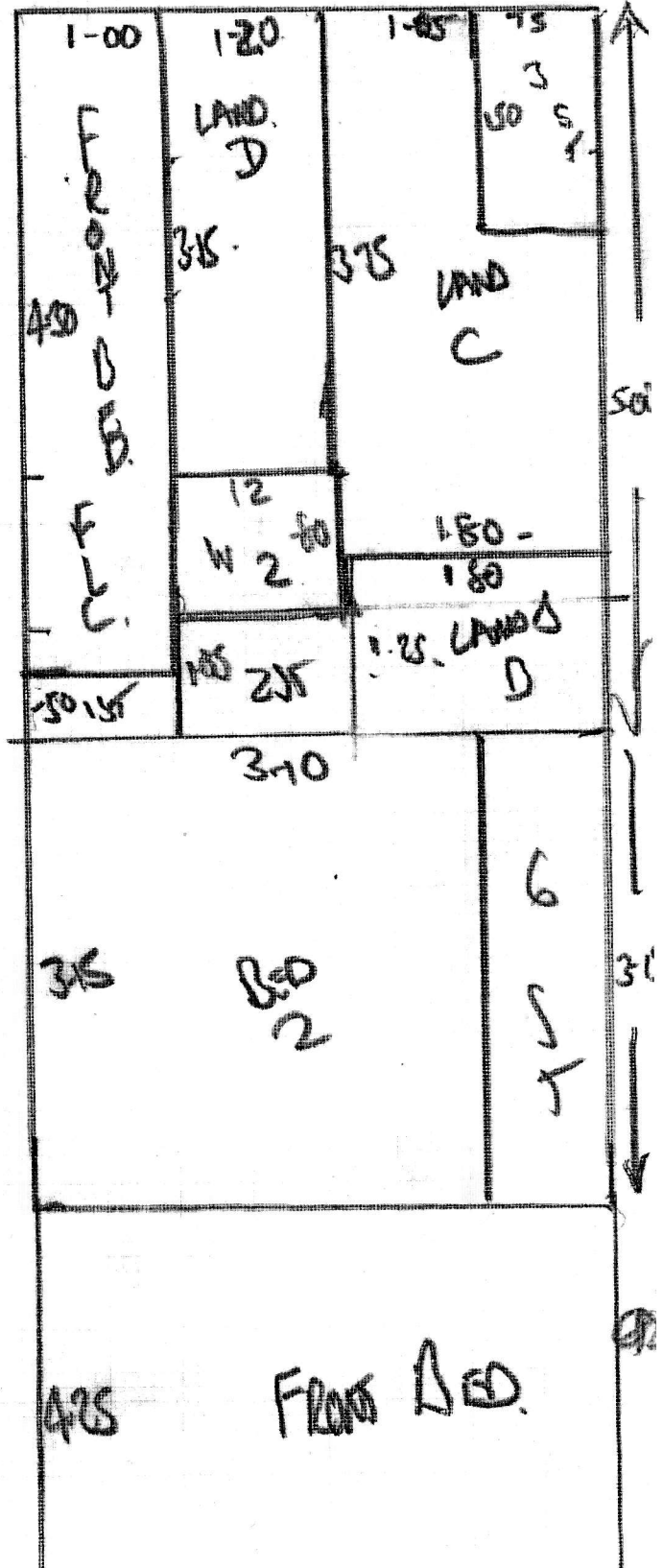


2ND PHASE FITTING



CUTS
 5.45
 6.70
 5.00
 3.15
 4.25

F25651
 Windrup
 3 Branksea Street
 London, SW6 6TT
 07920 - 082794
 2 3



24-55x4 9820

GROUND TO FIRST POINT-
RIVEN -20 43 X-60
11 ST
BMEF -50 - X-60

F 2565
WINDROP
3 BRANKSEAT
LONDON SW6 6TT
07920 - 082794
3 3

600 X-60
WITH HB 8332 TAPE
12M