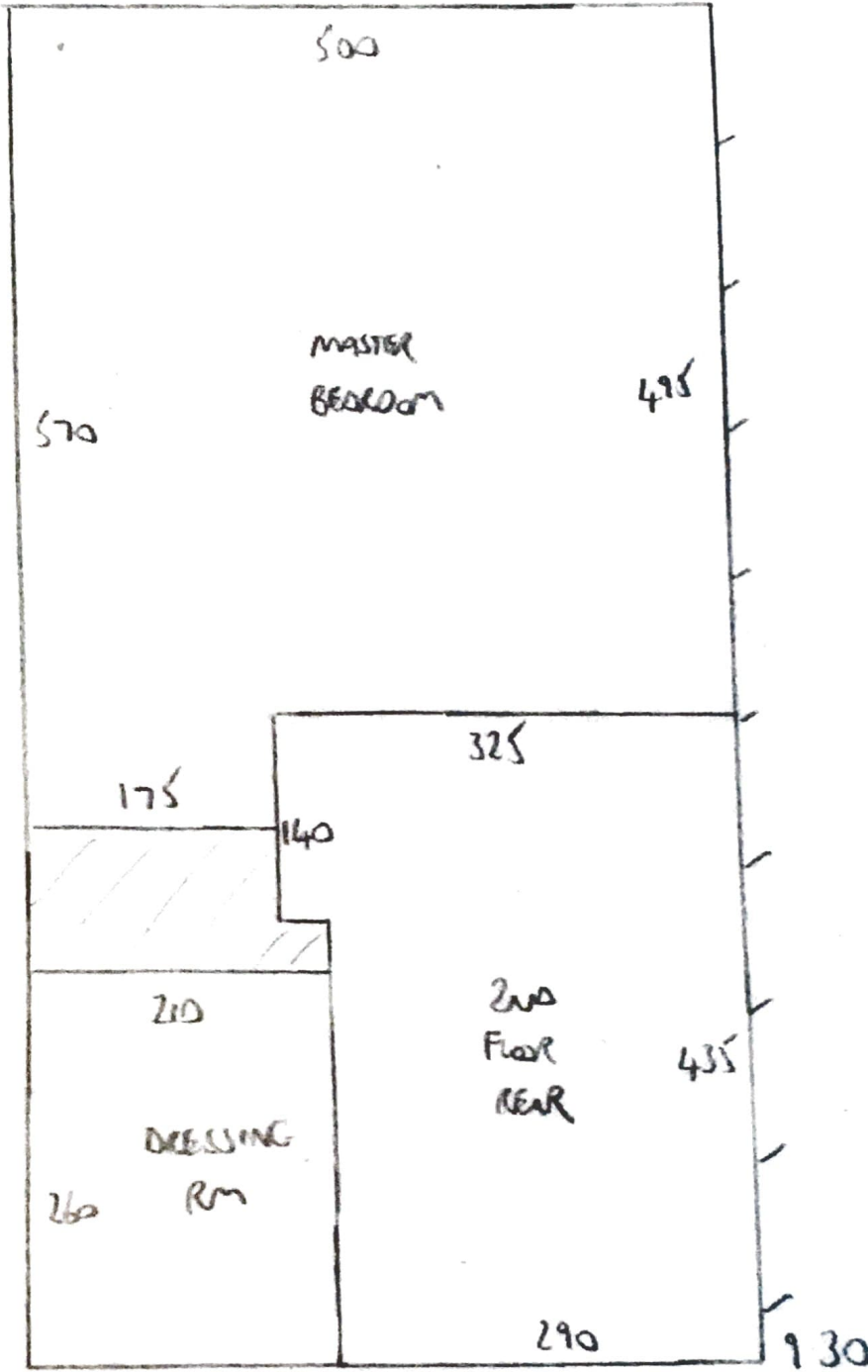


Bedrooms



F2826S
 F28265
 MOUNTAINVIEW
 27 PENNSYLVANIA CRES
 W11 30S

2 of 6

- 3.80
- 3.10 } Top Floor
- 3.90 }
- 4.60 - basement area
- 9.30 - CIP

$2470 \times 500 = 1235000$

~~FLOOR FLO - 494~~

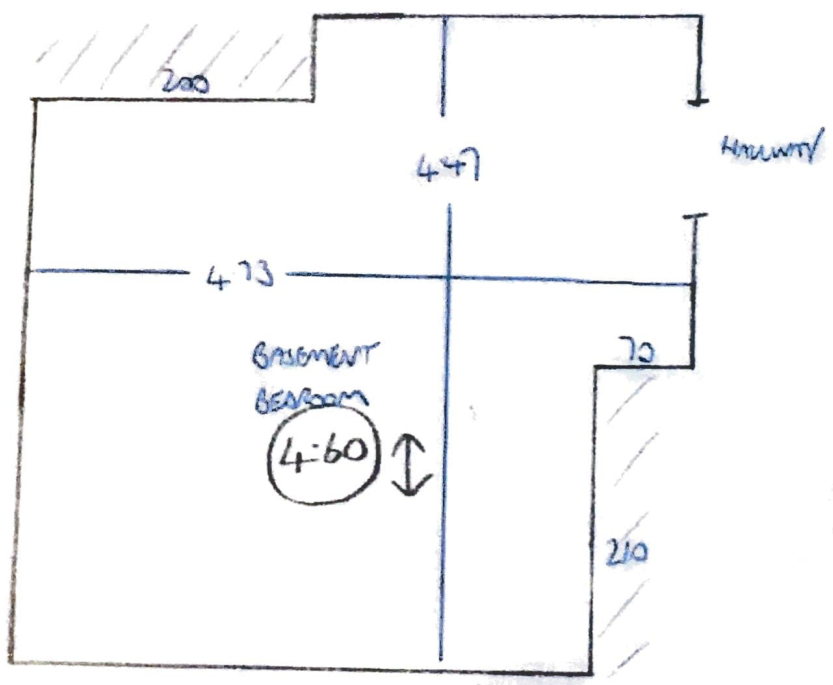
Colorado COL - 2203

BASEMENT STAIRS

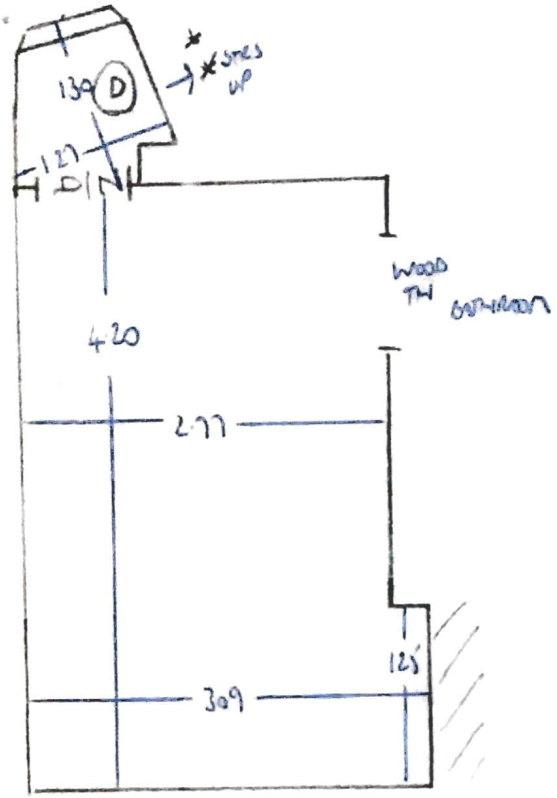
Riser 8Lx17
1 STR 82
4 STRS 80
11 STRS 76
BASEMENT

F2826S
~~F28446 F27174~~
MINERZHAUSEN
27 PRODUCE OCCUPANT
W/ 3DS

3 OF 6



Second floor plan

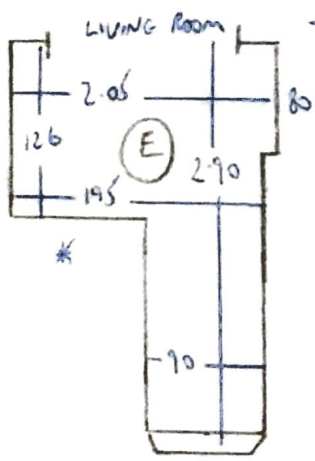


F2826S
~~F26446~~ ~~F27174~~
 MINER 2 HAGEN
 27 PEMBROKE CRESCENT
 W11 30S

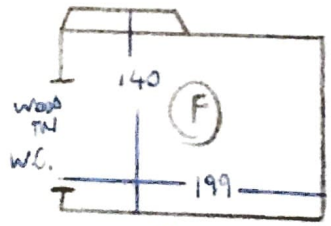
4 OF 6

- 9 W 107x62
- 10 W 88x52
- 11 STPS 87 *

FIRST FLOOR



5 STPS 87x47



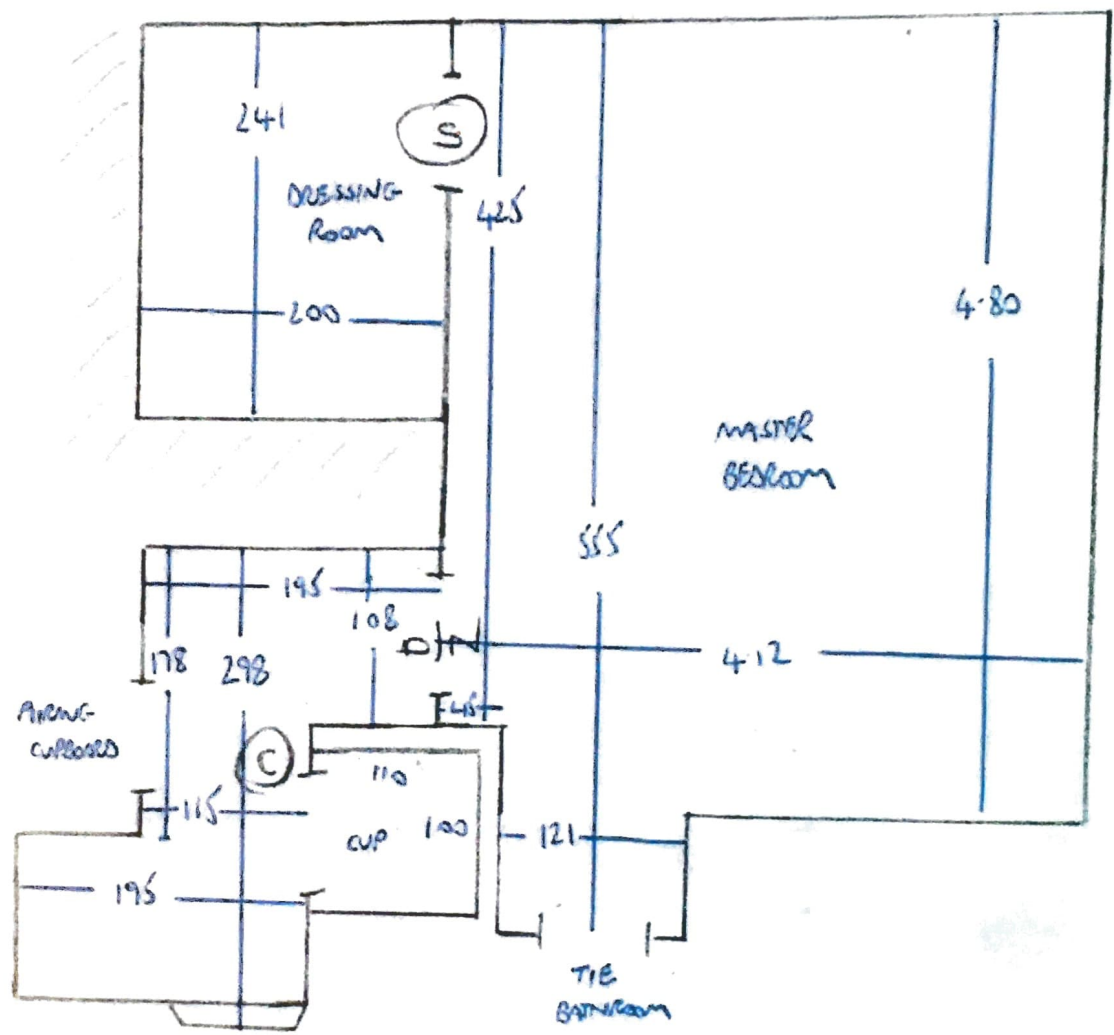
STEP 100x59
 (2x ANCHORWTS)
 REMOVE TR. 95
 STUDY

- 13 STPS 88
- 1 BN 88x50
- 2 BN 90x57
- 3 BN 95x60
- 4 BN 115x65
- GIF

F 2826S
~~F2826~~ F21114
 MINERTZ HAGEN
 27 PEMBROKE CRESCENT
 W11 30S

SECOND FLOOR FRONT

5 of 6



- 5 STPS 86x47 /
- 5 W 93x53 /
- 6 W 105x54 /
- 7 W 134x60 /
- 8 W 126x82 /
- * * /