

~~2500~~ F29292

Jett
of Kinnu
Wb 8th

1 of 2

final
Calculation

$$\text{Part 1 } 245 \times 400$$

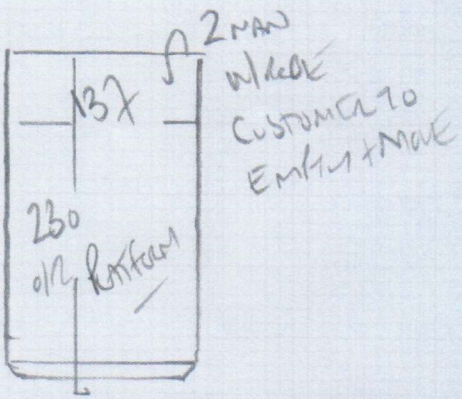
$$\text{Part 2 } 290 \times 400$$

$$\underline{535 \times 400}$$

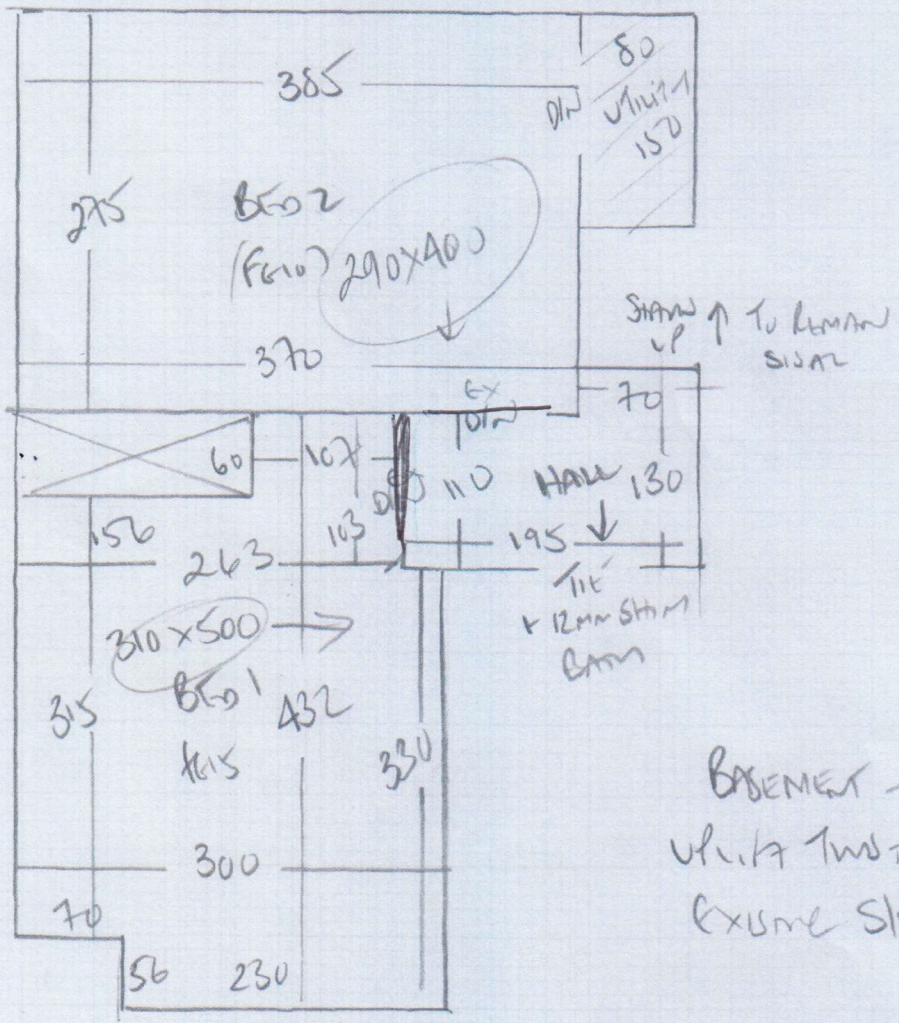
2140m²

$$\text{Part 1 } \underline{310 \times 500}$$

1550m²



~~285~~ F29292
John
9 Kinnear Road
W6 8NG
2 of 2



BASEMENT - CONCRETE FLOORS
UNITS TWO FIVE AND SIX
EXHIBIT STAGE