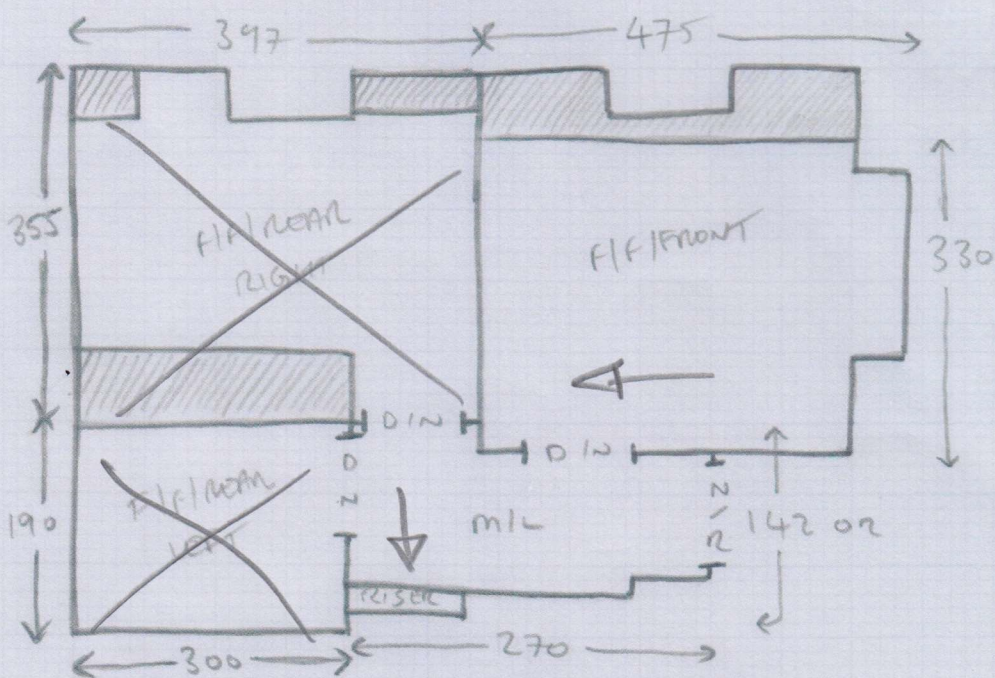


(SN REQ)
 T/L = 100 OR X 79 -
 2xST = 46x74 -
 W1 = 60x83 -
 W2 = 62x107 -
 W3 = 60x110 -
 W4 = 60x74 -

3xST = 45x74 -
 W5 = 60x83 -
 W6 = 61x107 -
 W7 = 60x110 -
 W8 = 60x74 -
 1xST = 45x80 -
 ↓ TO MIL ↓

F29527
 Woods

2/2



1xST = 43x77 -
 1/4 LAND = 103 OR X 80 -
 10xST = 42x78 -
 1/4 LAND @ = 104 OR X 78 -
 BIN = 44x120 -