

Sudbury Super Trust - 634/34
(Silverton)

PHASE 3

P25684
Musgrave

1 of 4

SITTING ROOM

620 x 400

LARGE FRONT BEDROOM

430 x 400

SMALLER FRONT BEDROOM

225 x 400

CUT PLAN

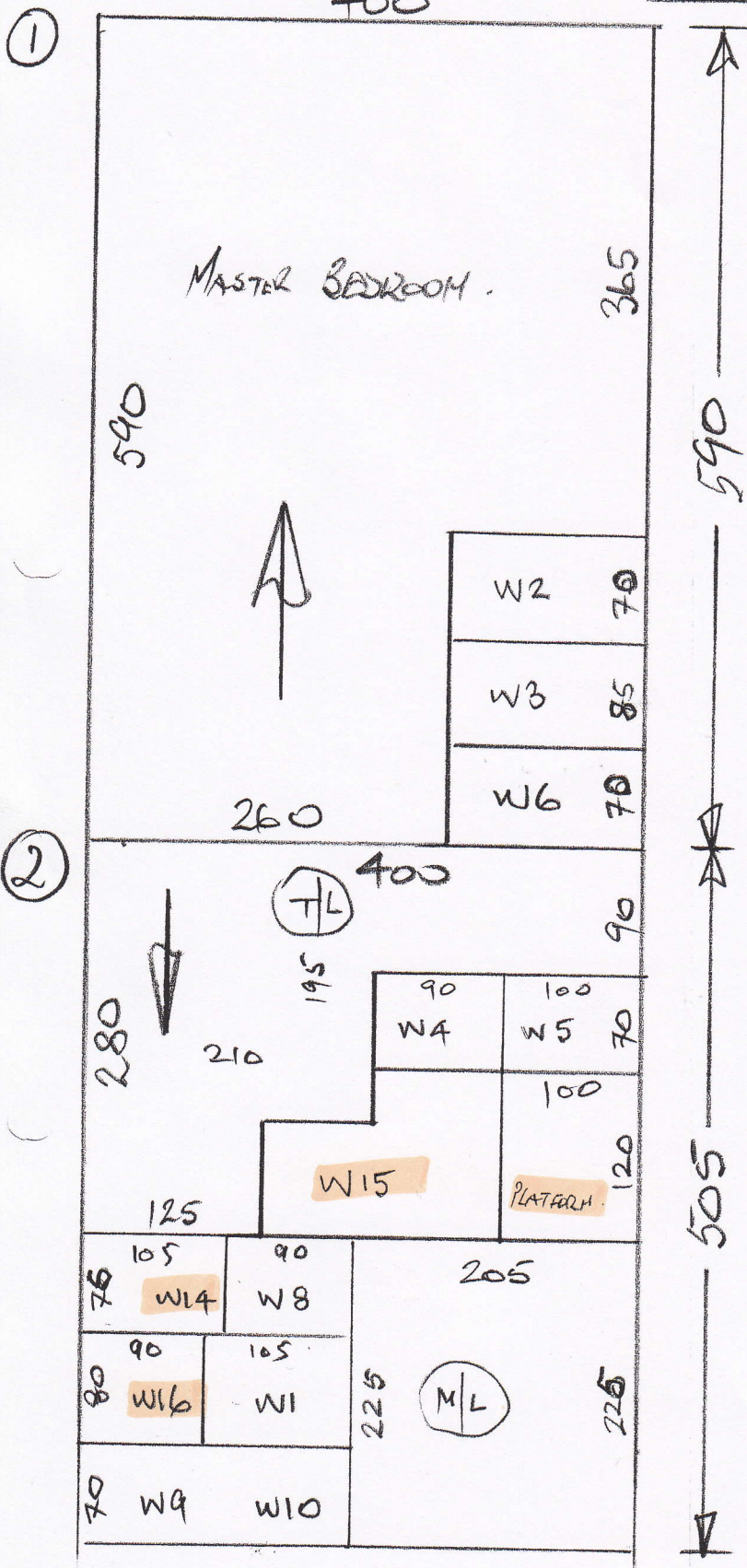
590 x 400

505 x "

290 x "

2660 x 400

= 106.4M²

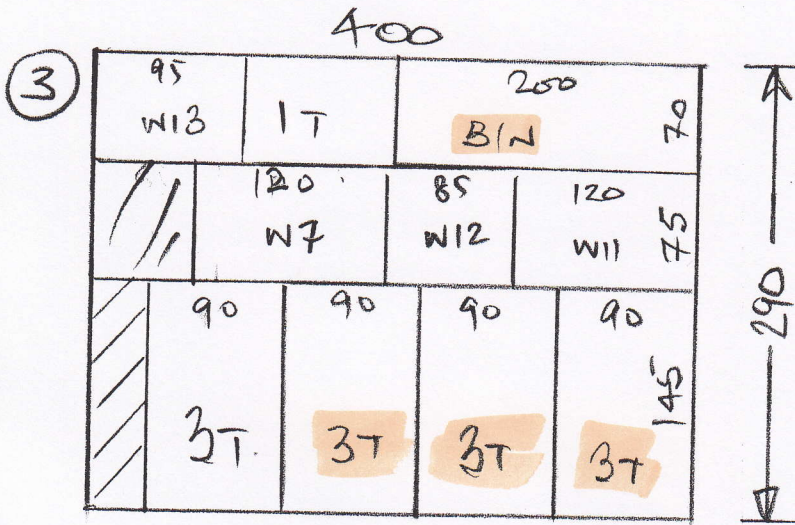


- ①
- ②
- ③

These carpets left with on 27/3

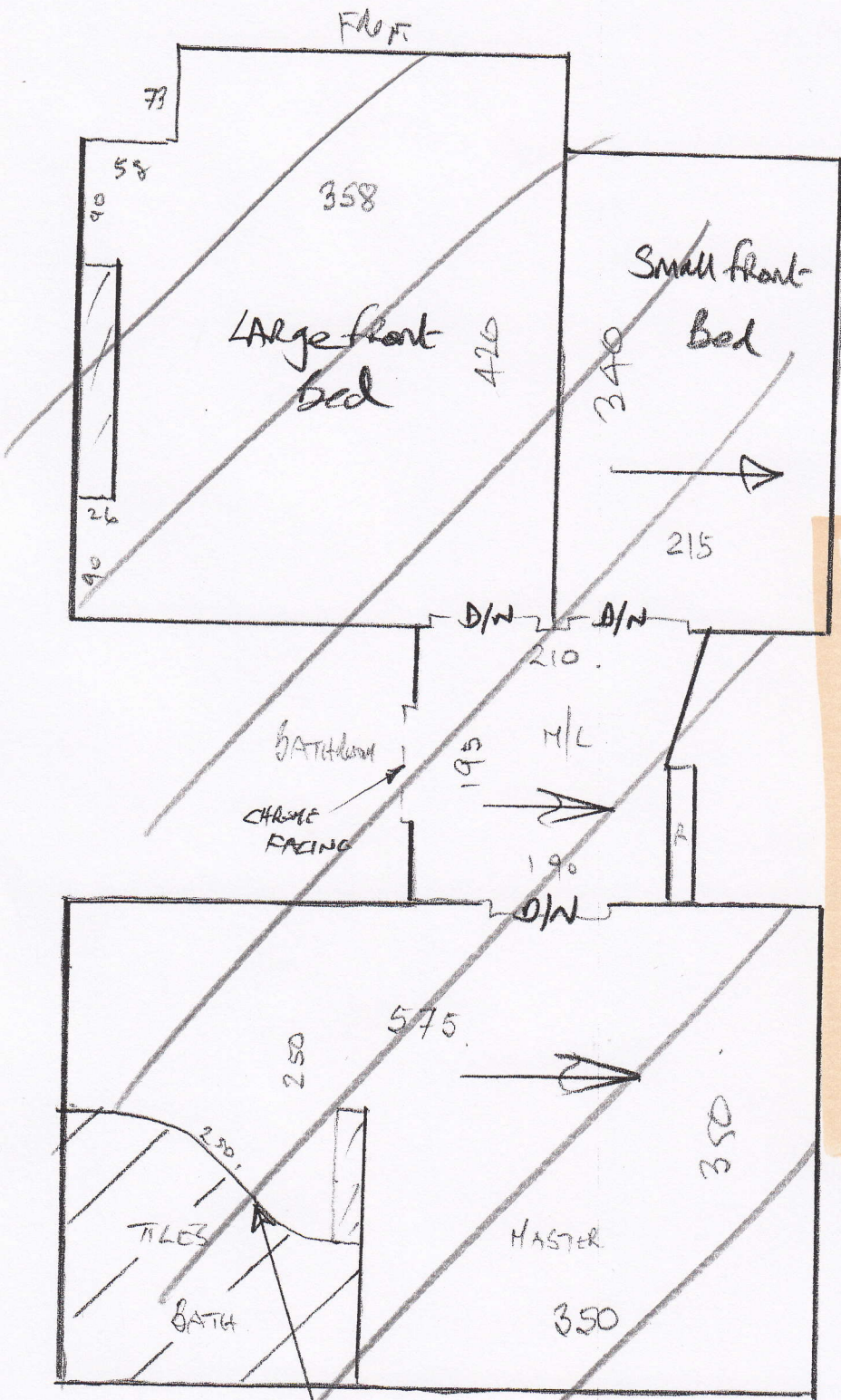
P25684
Muggrave

2 of 4



P25684
Musgrave

3 of 4



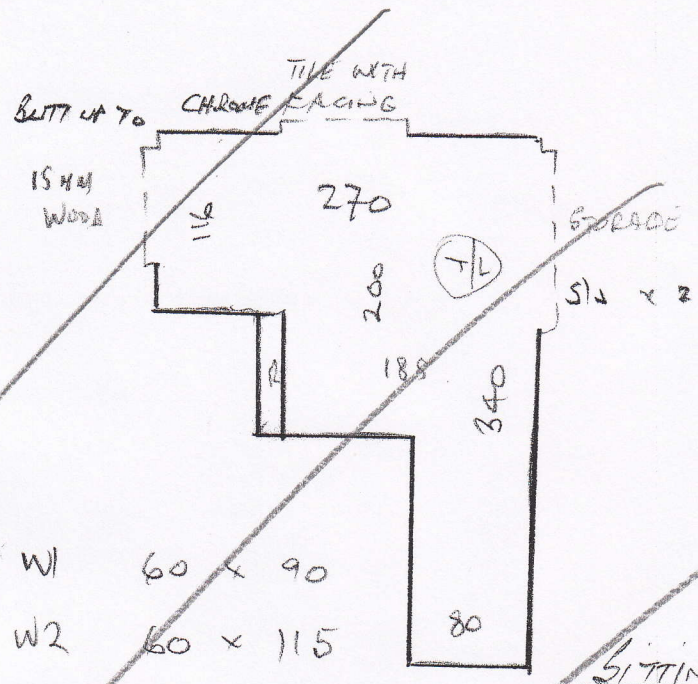
Phase 3

- 4 @ 44 x 82
- W14 65 x 95
- W15 75 x 115
- W16 70 x 80
- 5 @ 44 x 83
- PLAT 110 x 90
- B/N 55 x 190

*To have CHROME FACING by Builder

P25684
Musgrave

4 of 4



- W1 60 x 90
- W2 60 x 115
- W3 75 x 115
- W4 60 x 80
- 1 @ 46 x 80
- W5 60 x 90
- W6 60 x 105
- W7 65 x 110
- W8 65 x 80
- W9 60 x 85
- W10 60 x 105
- W11 65 x 110
- W12 65 x 75
- 1 @ 46 x 75
- W13 60 x 85

SITTING ROOM
600 x 370 (MUST BE CHECKED)

WOOD IN HALL

MEASURE RAMPART STAIRS LATER
(DIFFERENT CARPET)