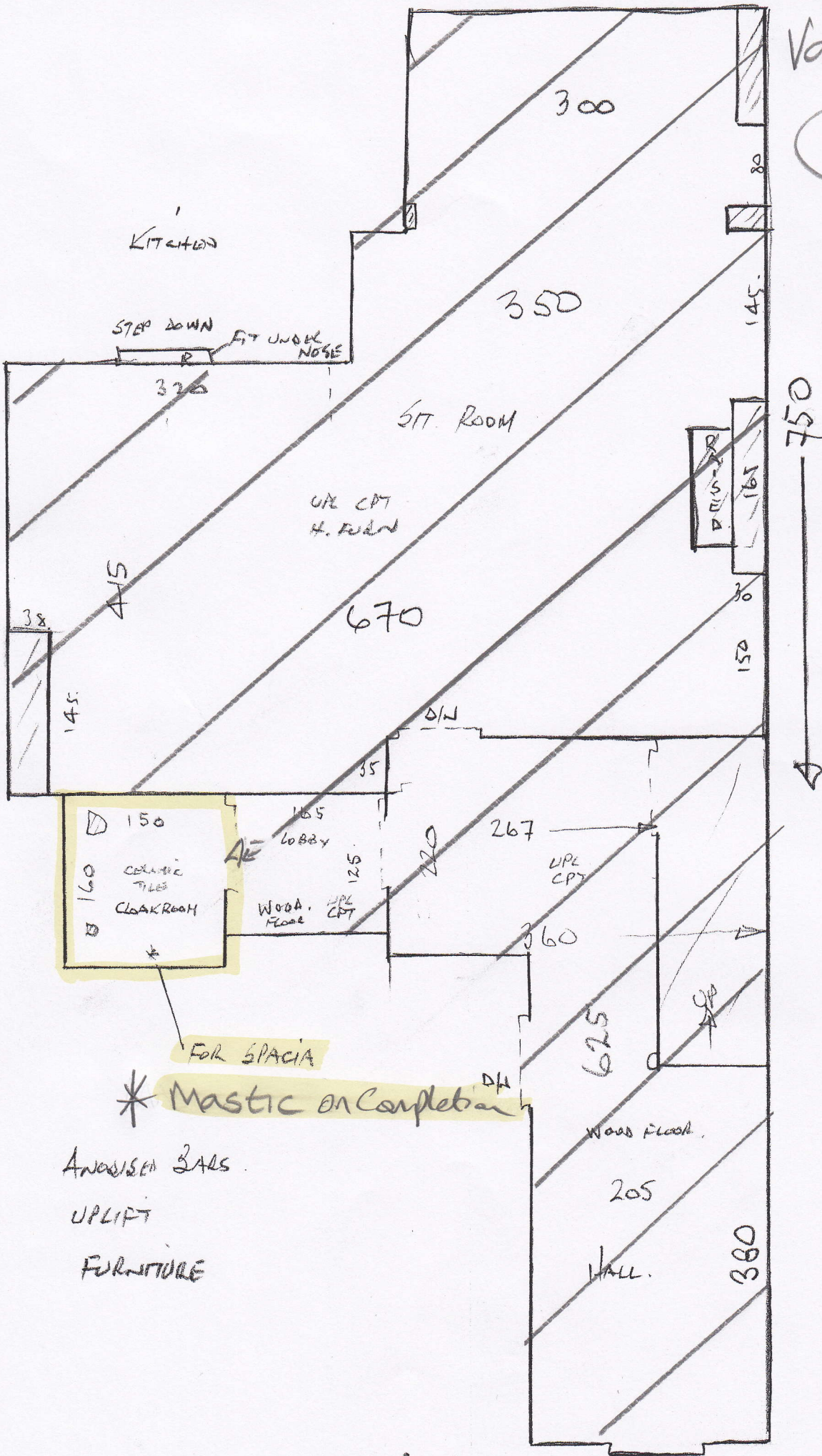


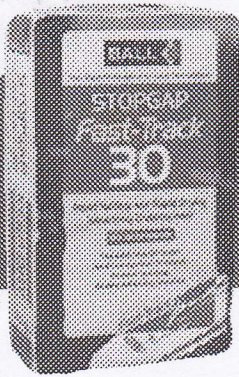
BACK

P25750
Van Steenberghe

lot 1



713
43
756



STOPGAP FAST-TRACK 30

Rapid Set, Rapid Dry Smoothing Underlayment

Screed classification: CT-C35-F10 to BS EN 13813:2002

PRODUCT DATA

INTRODUCTION

STOPGAP FAST-TRACK 30 is a rapid setting and rapid drying, self-levelling smoothing underlayment that incorporates the latest advances in cement technology providing a truly fast track solution. It is suitable for use in light to heavy-duty applications for preparing sound absorbent and non-absorbent subfloors prior to the installation of new floorcoverings.

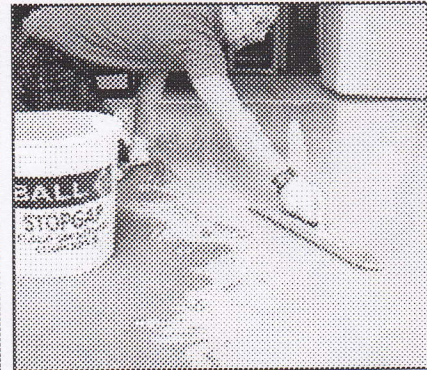
FAST-TRACK 30 allows both textile and resilient floorcoverings to be installed from as little as 45 minutes at 20°C.

FAST-TRACK 30 is dimensionally stable and is supplied as a pre-blended dry powder which is designed for application between 2 – 10mm. It is protein-free which allows it to be used in biologically sensitive areas such as hospitals.

FAST-TRACK 30 is suitable for use over a wide range of subfloor types including STOPGAP waterproof surface membranes, sand/cement screed, concrete, calcium sulphate (e.g. anhydrite), granolithic, terrazzo, epoxy and polyurethane resins, ceramic and quarry tiles.

COVERAGE

A 16kg bag of FAST-TRACK 30 mixed with 4.0 litres of clean water will cover approximately 5.6m² at a thickness of 2mm.



FEATURES

- Advanced binder technology
- Install floorcoverings from as little as 45 minutes
- Application thickness from 2 – 10mm
- Excellent self-levelling properties
- Low odour

BS EN 13813:2002

The above standard refers to the properties and performance of the product and the specification to which it has been tested. The data shown confirms the minimum compressive and flexural strengths that the product will achieve.

PACKAGES

16kg lined paper sacks.

TECHNICAL INFORMATION

BS EN 13813 Class Designation	CT-C35-F10	
Working Time @ 20°C	10-15 minutes	
Walk on hardness time @ 20°C	30 minutes	
Ready to receive floorcoverings	from 45 minutes	
Compressive Strength N/mm ² (BS EN 13892-2)	1 Day	>20.0
	7 Days	>30.0
	28 Days	>35.0
Flexural Strength N/mm ² (BS EN 13892-2)	1 Day	>4.0
	7 Days	>7.0
	28 Days	>10.0
Consumption per mm thickness	1.43 kg / m ²	
Application thickness	2-10 mm	

HOW MUCH MATERIAL?

APPLIED THICKNESS	COVERAGE PER UNIT	CONSUMPTION PER 10m ² AREA
2mm	5.6m ²	4 units
5mm	2.2m ²	9 units
10mm	1.1m ²	18 units

Note: Coverage rates are based on 4.0 litre water addition and will vary according to the condition of the subfloor.

SURFACE PREPARATION

Floor surfaces must be suitably prepared: sound, dry (<75%RH) and free from contaminants that may prevent adhesion. Use STYCCOCLEAN C140 for removing grease, oil, polish, soap etc. from non-absorbent substrates.

Concrete and sand/cement screeds must be fully cured and any laitance or surface treatments must be removed. The temperature of the floor must be maintained above 5°C throughout the application and drying of the underlayment. Underfloor heating must be off for at least 48 hours before, during and after application.

For fast track applications, we would recommend that the floor temperature is maintained above 15°C to ensure the initial set time is kept to a minimum.

For detailed information, request the F. Ball Subfloor Preparation Guide.

PRIMING

IT IS ESSENTIAL TO PRIME ALL SURFACES.

Absorbent surfaces - Prime with dilute STOPGAP P131 to prevent rapid drying of the underlayment. For dry (<75% RH) and suitably prepared anhydrite screeds use neat STOPGAP P121.

Non-absorbent surfaces – such as flat firmly bonded minimal adhesive residues, terrazzo, quarry tiles and STOPGAP waterproof surface membranes should be primed with neat STOPGAP P131 to ensure that good adhesion is obtained between the underlayment and substrate.

Primers should be used in accordance with instructions printed on the bottle and must be allowed to dry before applying the smoothing underlayment

MIXING

Add 4.0 litres of clean water into a STOPGAP mixing bucket and gradually add all the powder whilst stirring with a power whisk fitted in an electric drill until a smooth creamy lump free consistency is achieved. The material should be mixed for a minimum of 2 minutes.

Water addition

4.0 litres minimum - 4.25 litres maximum per 16kg depending on consistency and flow properties required. Do not exceed 4.25 litres of water per 16kg bag.

APPLICATION

Pour the mixed material onto the prepared subfloor and allow to flow and attain a smooth finish. Minimal work with a smoothing trowel is required. The use of a spiked roller will help eliminate entrapped air and smooth out flow lines to give a more uniform surface appearance. The mixed material should be applied at thicknesses between 2mm to 10mm, but can be taken down to a feathered edge if required. For optimum smoothing and levelling characteristics and when covering adhesive residues, an overall thickness of at least 3mm should be maintained.

FAST-TRACK 30 is self-smoothing, but should any imperfections remain they can be removed by rubbing with a carborundum stone when the underlayment will accept foot traffic - typically 30 minutes after application at 20°C. This time will be extended with reduced temperatures i.e. approximately 60 minutes at 10°C.

FAST-TRACK 30 should be applied at a 3mm minimum thickness when used over STOPGAP waterproof surface membranes prior to the installation of resilient floorcoverings.

DRYING

Drying is dependent on the absorbency of the subfloor, ambient temperature and humidity.

Application of adhesives onto the surface can commence as soon as the surface is hard enough not to be damaged by the adhesive trowel – typically 45 minutes at 20°C when applied to absorbent subfloors and from 1 hour when applied to STOPGAP waterproof surface membranes and other non-absorbent subfloors.

CAUTION

Due to the fast setting nature of FAST-TRACK 30, apply the material immediately to avoid issues with joining mixes. If working alone, we would recommend that sufficient water is available and measured ready for the required number of units to minimise time taken between mixing units and application. Care should be taken with the use of a spiked roller with such a fast setting product.

TOOLS

Suitable steel smoothing trowel, spiked roller, mixing bucket, electric drill and power whisk.

Wash tools with water immediately after use.

STORAGE

This product must be stored under cover, in unopened bags clear of the ground in cool dry conditions, protected from frost and excessive draught. Dampness will reduce the shelf life and may cause the powder to set in the sack.

SHELF LIFE

6 months in unopened bags and stored under good conditions.

HEALTH & SAFETY ADVICE

This product is not classified under the Chemicals (Hazard Information and Packaging for Supply) Regulations. Obtain the relevant Material Safety Data Sheet and follow the advice given. These can be found at www.f-ball.co.uk. Alternatively they can be obtained from the point of purchase or from F. Ball and Co. Ltd. at the address below.

Site conditions vary, to ensure this product is suitable and to confirm this data sheet is current, please contact our Technical Service Department.

For further information about F. Ball products or more detailed technical assistance, please contact:



F. Ball and Co. Ltd.

Churnetside Business Park
Station Road, Cheddleton, Leek
Staffordshire ST13 7RS
United Kingdom

Tel: +44 (0) 1538 361633

Fax: +44 (0) 1538 361622

Tech Services Fax: +44 (0) 1538 361567

Email: mail@f-ball.co.uk

www.f-ball.co.uk

