

P26151
LARGFIELD

1 of 4

STOCK NATURAL L
- HC 510

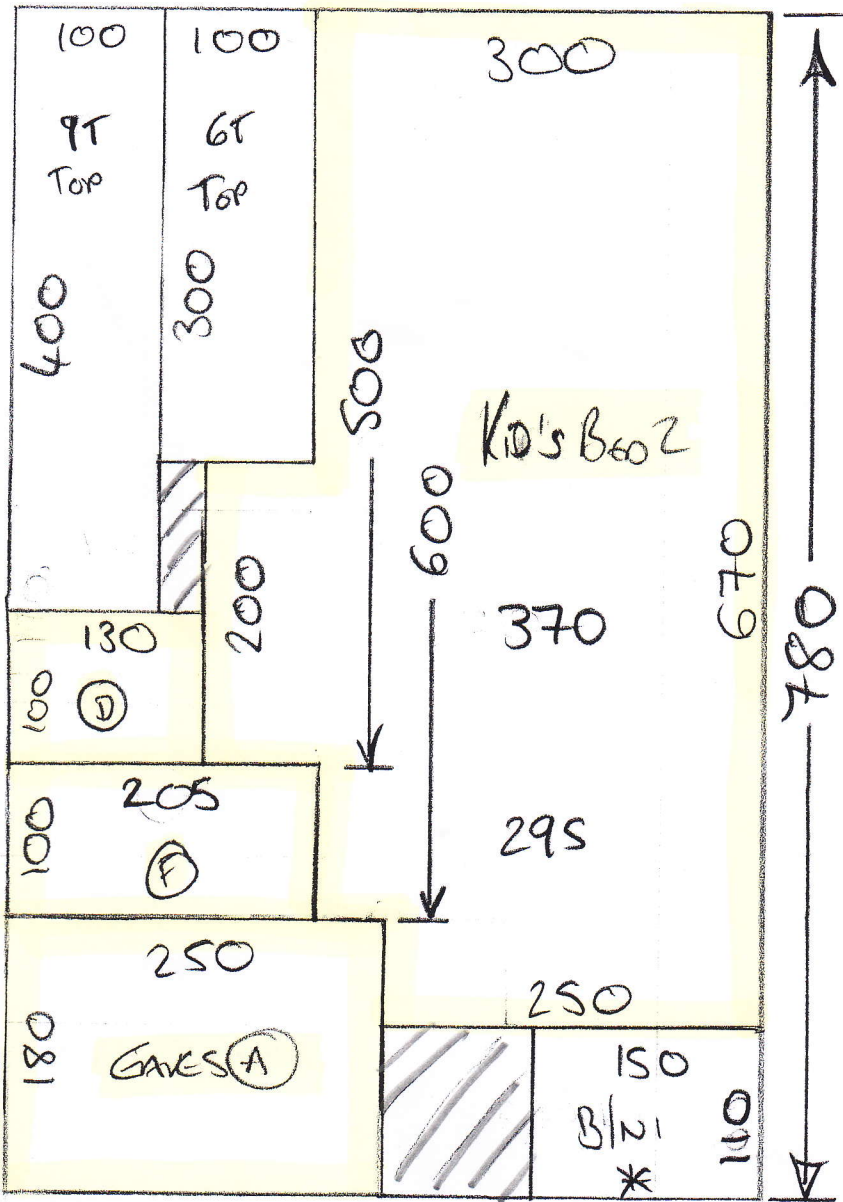
- Cut (KAW) = 700 x 500
- " 2 = 420 x 500
- " 3 = 780 x 500
- " 4 = 505 x 500
- " 5 = 560 x 500
- 2965 x 500

= 148.25m²

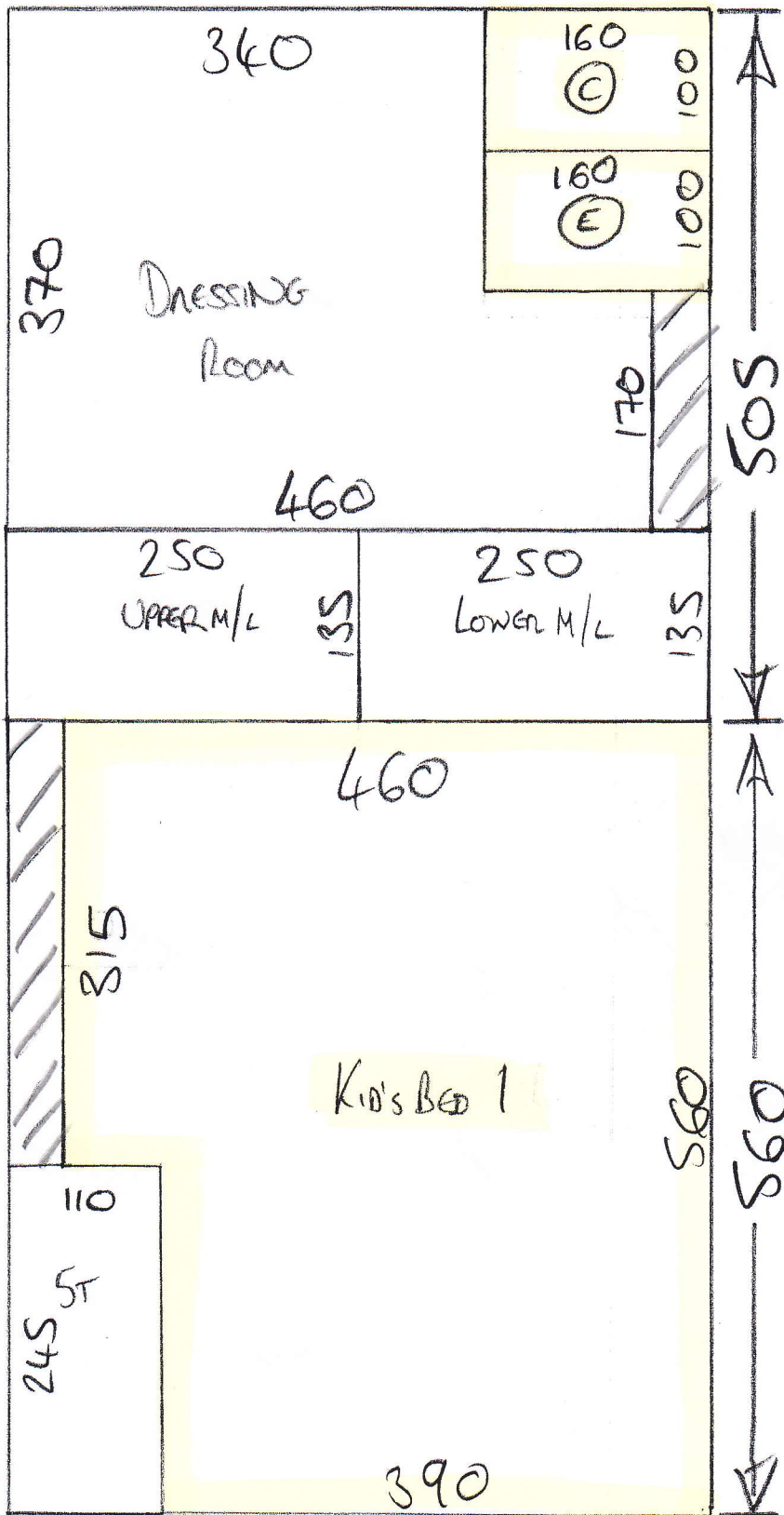
* = RUNNER

= PHASE 1

MARK UP REMAINING
PIECES WITH JOB NUMBER
& STORE @ WAREHOUSE
UNTIL NEXT PHASE



P26151
 LONGFIELD
 2014



P26151
LANGFIELD

3 of 4

