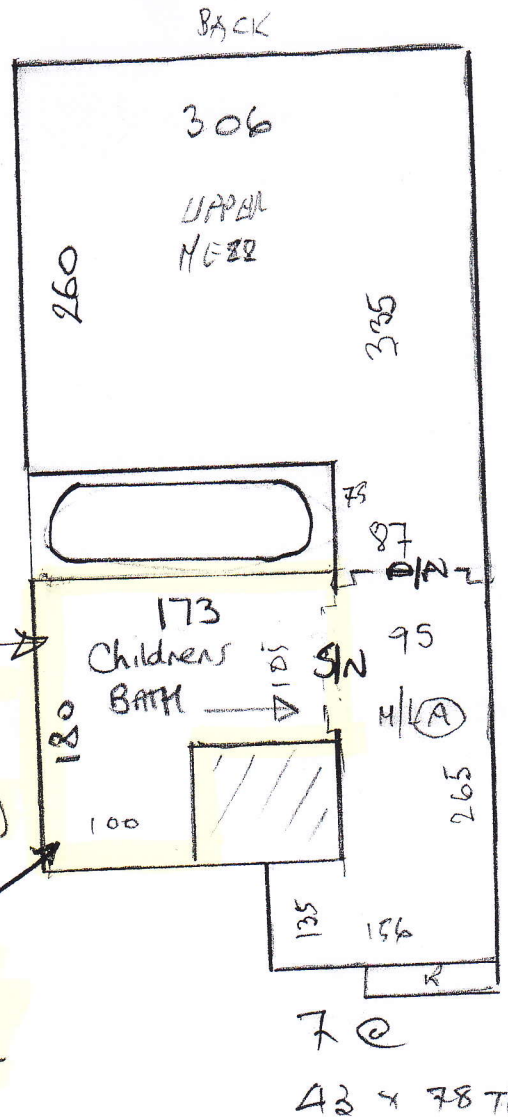
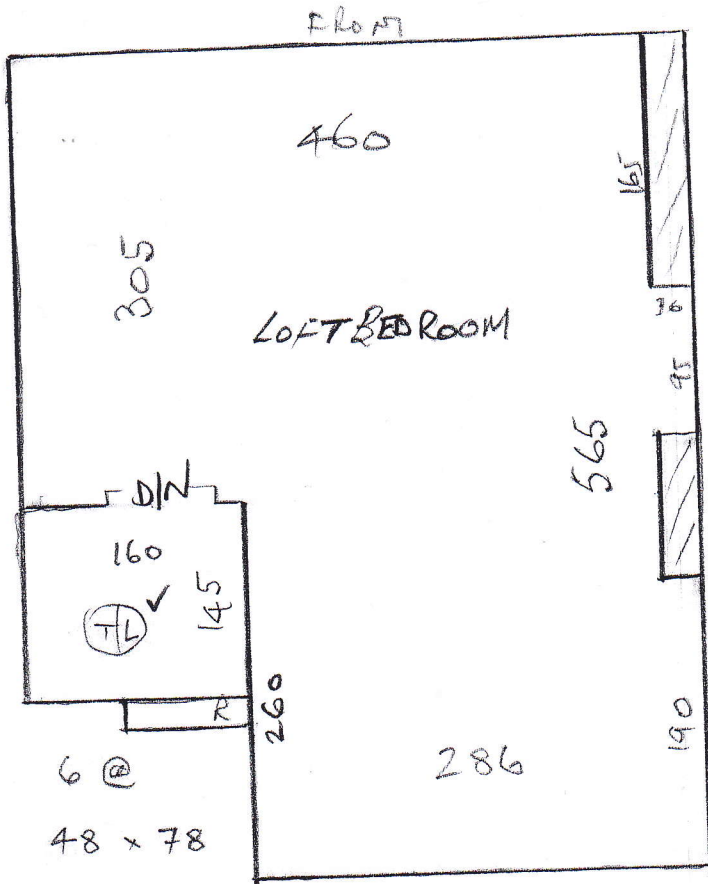


TOP FLOOR

P26295  
WILLIAMS

10/1

ROY H - 2/4



UNatural flooring  
Col. OYSTER VF2003  
(BATH HAS UP/flow heating)

176 x 200  
Very tight!

\* Builder to lay electric up/flow heating & screed over top. Stick vinyl direct to builders screed, but up/flow heating must be off & remain off for 48 hours after