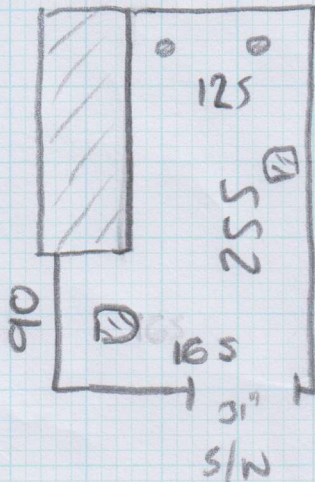


Kevin - 23/9

Job No: P26586  
Name: VAN BIEVE  
Address:

Tel: 10/2  
Sheet: of:

Bathroom



- H/Board Req'd

Ultimate elements

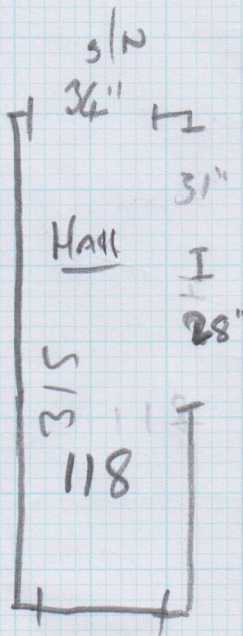
Sand 005

= 175 x 300

\* Lay H/BOARD

TOO LANDING - (CARPET)

MAIN HALL  
(CARPET)



Boiler  
STOP @ Doorway

WC  
EX. C/WORK

Titanium XT

Sansen 493

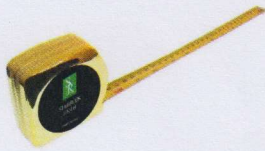
= 130 x 400

\* Screed with  
fastrack 30  
over existing  
Crunchy tiles

F/O

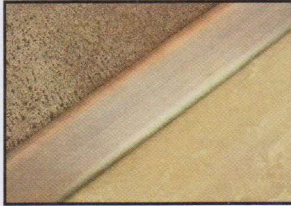
CRUNCHY Tiles Down With  
Some GRANULS + BITS MISSING  
Especially Around Edge

P26586 - Van - Biene  
2012



# Measuring And Technical Guide For The Premier Trim Eurocover Range

*\*Use this for the WC Door*



The Premier Trim Eurocover range of door bars are a high quality product for a high quality installation.

The Premier Trim Eurocover range are available in three lengths: 90cm, 180cm and 270cm.



## Premier Trim Eurocover.

The Premier Trim Eurocover range can be used where two hard floors meet either level or with a height difference of up to 6mm and gentle ramp is required.

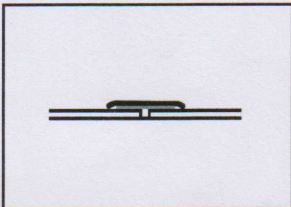
The Eurocover is a 'Stick Down' product.

## Hard Floor To Hard Floor

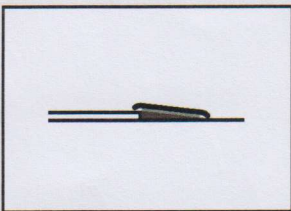
*(For Doorway  
Gap = 170)*

Your Premier Trim Eurocover will arrive ready to cut to size and fit.

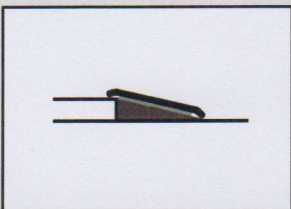
When using the Eurocover where the floor levels are the same simply clean the floor surface to remove any dust or surface contaminants. Now peel off the backing from the adhesive tape and stick down applying pressure along the length to ensure good adhesion.



When used on floors with a height difference of up to 6mm you can use the Stairrods Dimstrip to produce a ramp.



Measure the height difference and choose the Dimstrip which is closest to that measurement, they are available from 1mm to 6mm in one millimetre increments.



The Dimstrip is fitted directly to the floor using either adhesive or nails and the Eurocover sticks to the Dimstrip, again, ensuring a dust free surface for adhesion.



Satin Brass and Polished Brass Trims can be left to age (oxidize) for a natural finish. To keep the brass like new and protect it from oxidation simply polish every few months using a very light acid treatment, like distilled malt vinegar (Sarson's vinegar), which contains only 5% acetic acid. It is worth noting that the longer stains are left unpolished, the more difficult stains are to remove. For highly tarnished Satin Brass and Polished Brass trims, try using the Salt and Lemon Method. The combination of lemon juice and salt can also break down oxidation, due to the intense combination of citric acid and sodium chloride. Simply cut a lemon in half, sprinkle salt on the moist surface and scrub the entire brass surface. Rub as hard as you can to slowly remove the tarnish.