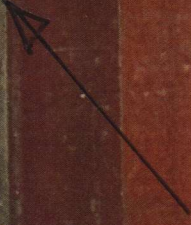


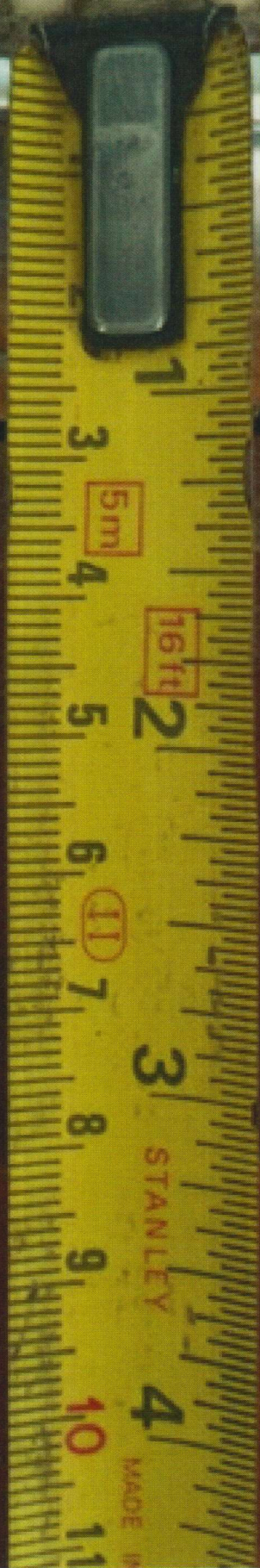
P26865
Raggett

Fit Cover Plate
to Here



Must reach
this line

Needs to
be covered
by SAM.





Technical

Product

- The Posh 38 range of Solid Brass door bars are a high quality product for a high quality installation.
- The Posh 38 range are available in three lengths: 90cm, 180cm, 270cm and in nine colours, see facing page.

ANY QUESTIONS
Please call 01207 591176 For friendly expert advice.

Fitting

- The Posh 38 range can be used for a carpet to carpet, carpet to hard floor and hard floor to hard floor installations.



The Posh 38 is screw down product and the screw heads are then hidden using the stick down inlay.

When using on a carpet to carpet installation you must still use gripper and fit the Posh 38 over the gripper to give the carpet a good grip making sure the Posh 38 is screwed down firm enough so as not to allow the screws to lift and interfere with the inlay.



- When using on carpet to hard floor fit the Posh 38 over the gripper on the carpet side and rest the other edge on the hard floor and screw down making sure the Posh 38 is screwed down firm enough so as not to allow the screws to lift and interfere with the inlay.



- When using on hard floor to hard floor ensure a gap of 12mm between the surfaces to accommodate the underside of the fitting channel, again, screw down firmly to prevent the screws from lifting the inlay from its channel.



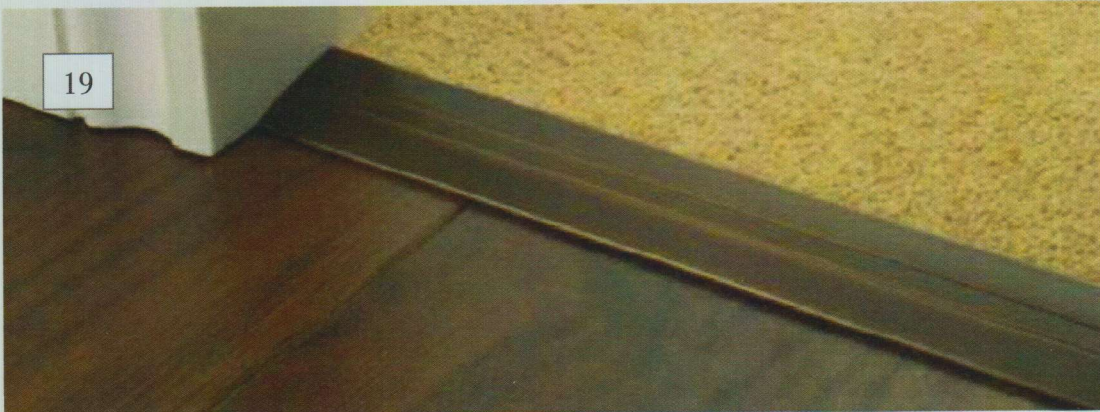
- When using on hard floor to hard floor with a height difference the Posh 38 will accommodate up to a 6mm edge, again screw down firmly to prevent the screws from lifting the inlay from its channel.



Care and Maintenance

- Satin Brass and Polished Brass Trims can be left to age (oxidise) for a natural finish. However to keep the brass like new these two finishes will need to be polished from time to time with a propriety brass polish. Ensure that you follow the instructions on the tin and protect your flooring during polishing.
- Satin Nickel, Chrome, and Brushed Chrome These finishes will need to be polished from time to time with a propriety metal polish. Ensure that you follow the instructions on the tin and protect your flooring during polishing.
- Pewter, Antique Bronze and Antique Brass If these finishes become contaminated the only option is to polish them with a propriety metal polish and allow them to age again naturally. Ensure that you follow the instructions on the tin and protect your flooring during polishing.

P26865
Raggett



Premier Posh 38

The Premier Posh 38 is a product suitable for all floor coverings be it carpet, vinyl, laminate, stone or any combination of these, and because it can be used as a ramp, height differences of up to 6mm are not a problem.

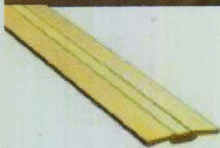
Manufactured from solid brass with a profile width of 38mm and including a self adhesive inlay strip to cover the fixing screws, Posh 38 will give you an attractive, clean finish to your flooring.

Base Material: Solid brass.

Choice of standard finishes: Antique Brass, Antique Bronze, Polished Brass, Satin Brass.

Choice of specialised finishes: Brushed Chrome, Chrome, Pewter, Polished Nickel and Satin Nickel.

Choice of length: 90cm (36"), 180cm (71") and 270cm (106")



Polished Brass



Satin Brass



Antique Brass



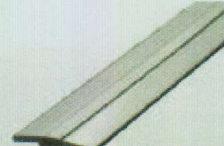
Antique Bronze



Pewter



Chrome



Brushed Chrome



Polished Nickel



Satin Nickel

