

Phase 1

mrcarpet
DESIGNS FOR FLOORS

Job No: P26876
Name: MJT Holdings
Address:
Tel: 10/4
Sheet:

Milestone

Col. Tungsten 990

Cut Plan ① 800 x 400
Cut Plan ② 200 x 400
10.00 x 400
= 40m²

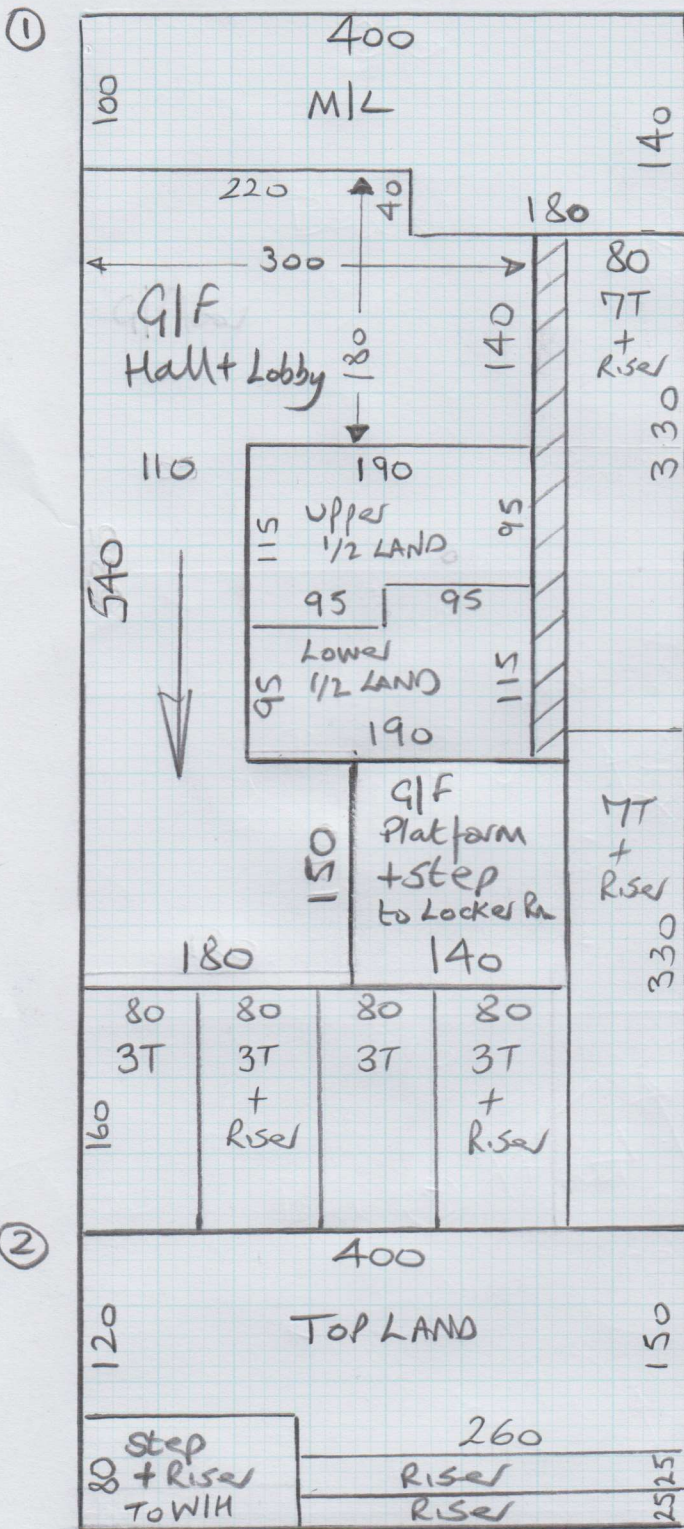
Gradius G11 Nosings

Drilled + Plugged (Black)

33 NOSINGS at
Various sizes

= 25.03 Lin mts

(See Sheet attached)



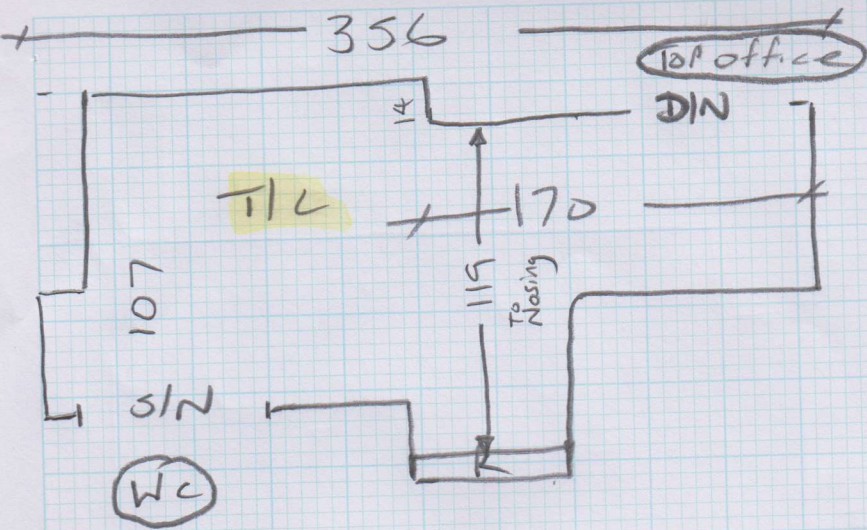
Step gap 1200 x 4

Andurapid 45 x 2

S/N x 4

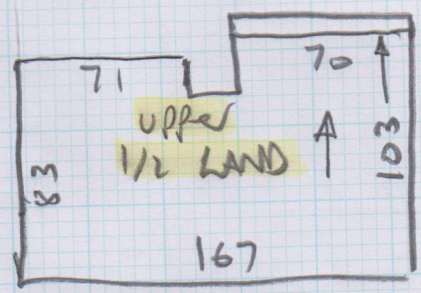
D/N x 1

*Any problems Contact
Molly Koran on
07968-276682



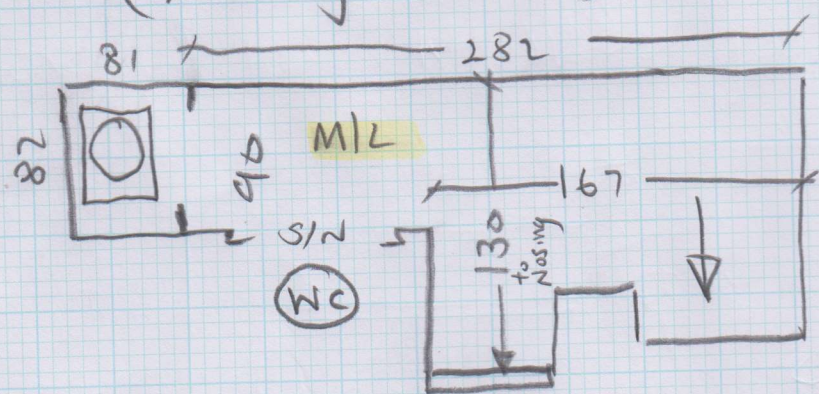
mrcarpets
 Job No: P26876
 Name: MJT Holdings
 Address:
 Tel:
 Sheet: 2 of 4

7 Trends + rises $\approx 39 \times 72$
 1 Rise $\approx 17 \times 72$
 (8 nosings ≈ 72 cm)

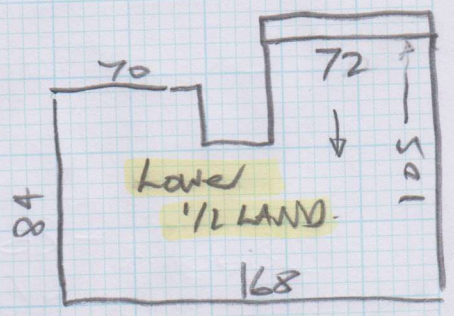


2 Bags
 ALU RAPID to
 Repair Stairs

6 Trend + rises $\approx 39 \times 72$
 1 Rise $\approx 17 \times 72$
 (7 Nosings ≈ 72 cm)



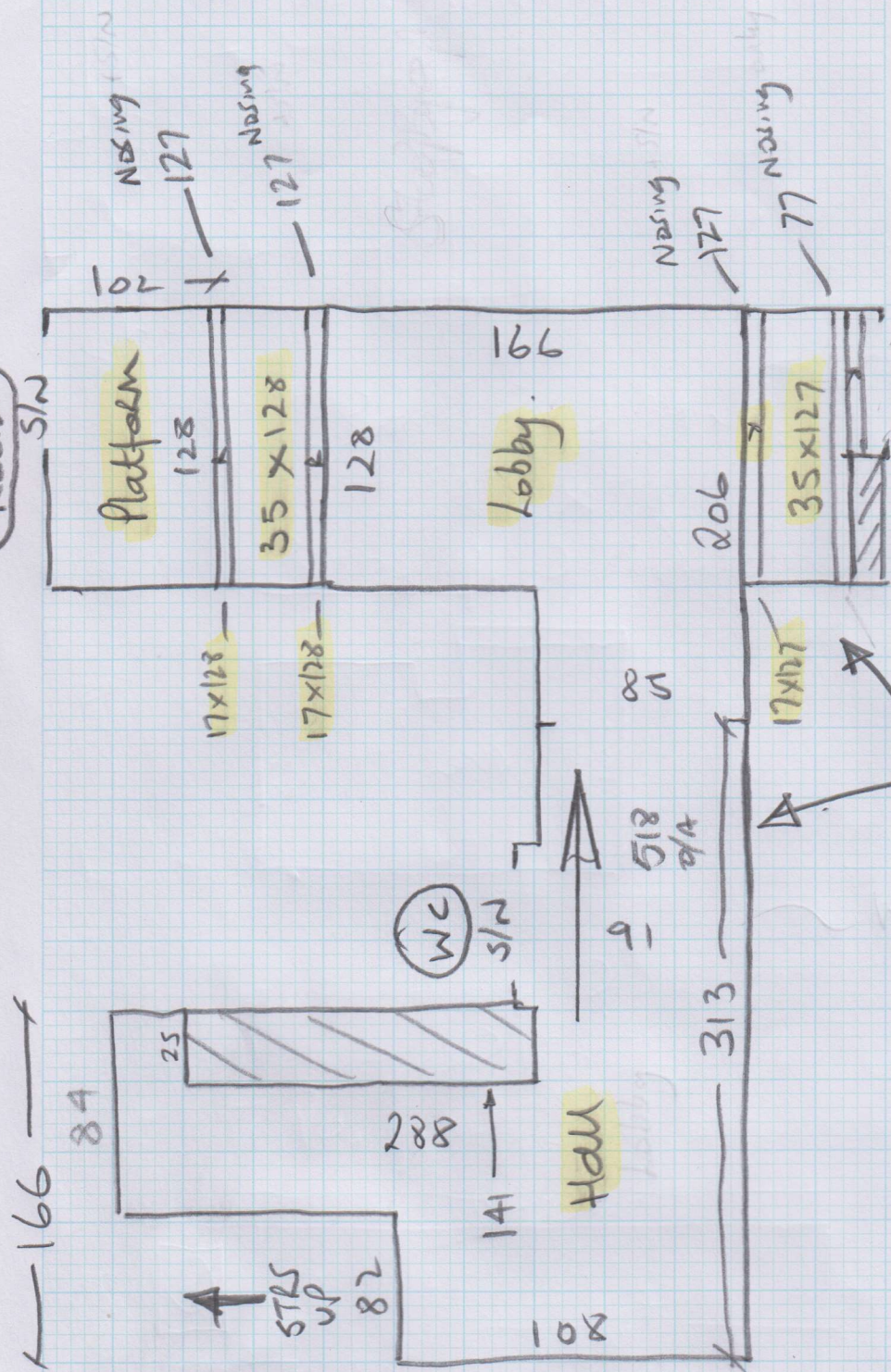
6 T + L $\approx 40 \times 70$
 1 R $\approx 17 \times 70$
 (7 Nosings ≈ 72 cm)



6 Trend + rises $\approx 39 \times 72$
 1 Rise $\approx 17 \times 72$
 (7 Nosings ≈ 72 cm)

Job No: P26876
Name: MJT Holdings
Address:
Tel:
Sheet: of: 3 of 4

Locker Room

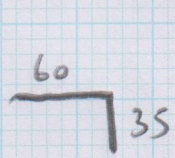


Painted floor here

Screed with stopgap 1200

Uplift stuck down carpet over vinyl tiles in Hall & stuck carpet over concrete to all landings & stairs

Nosings G11
D&P (no back trim)



(Drill + Plug + Stick)

Nosings (From Top floor Down)

mrcarpet
DESIGNS FOR FLOORS

Job No: P2687C
Name: MJT Holdings
Address: _____
Tel: _____
Sheet: _____ of: 4 of 4

- 1) 714mm (TOP LAND)
- 2) 716
- 3) 713
- 4) 714
- 5) 715

- 6) 712
- 7) 711
- 8) 708
- 9) 703 (Upper 1/2 LAND)

- 10) 710
- 11) 707
- 12) 707
- 13) 707
- 14) 711

- 15) 714
- 16) 694 (MEZZ LAND)

- 17) 709
- 18) 698
- 19) 700
- 20) 695
- 21) 697
- 22) 700

- 23) 704mm (Lower 1/2 LAND)

- 24) 701
- 25) 698
- 26) 698
- 27) 697
- 28) 695
- 29) 689

- 30) 1,273mm (Platform)
- 31) 1,272 (Step to Platform)
- 32) 1,276 (Step to WH)
- 33) 769 (Step to WH)

TOTAL 25.027 Lin Mtrs

GRADUS - G11 - B
Black Insert
Drilled & Plugged.

* Please provide screws & rawplugs, Thanks.

* All dimensions are in mm



STOPGAP 1200 PRO

High Performance Smoothing Underlayment

Screed classification: CT-C16-F6 to EN 13813:2002



Scan to view the product demonstration video

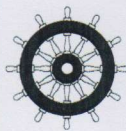


PRODUCT DATA

INTRODUCTION

STOPGAP 1200 is a low odour, fast setting, fast drying, two component smoothing underlayment suitable for preparing sound internal subfloors prior to the installation of new floorcoverings.

STOPGAP 1200 is particularly suitable for use over old adhesive residues (including bitumen and carpet tile tackifiers) without the need for priming. STOPGAP 1200 can be used for patch filling timber floors prior to overlaying with plywood. It is suitable for use in clinical and biologically sensitive areas such as hospitals, laboratories, clean rooms etc.



STOPGAP 1200 mixed with STOPGAP 1200 Liquid has been tested in accordance with IMO 2010 FTPC Part 5 (IMO Res. MSC 307(88)) and Annex 2 item 2.2 and approved for use in marine application. STOPGAP 1200 can be applied to suitably prepared steel decks in light to medium-duty traffic areas. *Note STOPGAP 1200 is not to be used as an integrated part of a horizontal A-Class division. USCG approval No. 164.106/1121/WVCL MED 0390.

STOPGAP 1200 is suitable for application over damp, clean, uneven concrete and sand/cement screeds, prior to application of STOPGAP waterproof surface membranes or STOPGAP ISOLATOR MEMBRANE.

STOPGAP 1200 is also suitable for use over a wide range of other subfloor types including STOPGAP waterproof surface membranes, sand/cement screed, concrete, granolithic, terrazzo, asphalt, steel, epoxy and polyurethane resins, ceramic and quarry tiles.

COVERAGE

A 20kg bag of STOPGAP 1200 Powder mixed with 5.0 litres of STOPGAP 1200 Liquid will cover approximately 5.0m² at a thickness of 2 - 3mm.

TECHNICAL INFORMATION

EN 13813 Class Designation	CT-C16-F6	
Working Time @ 20°C	15-20 minutes	
Setting Time @ 20°C	60 minutes	
At 3mm ready to receive most floorcoverings:	From 4 hours	
Compressive Strength N/mm ² (EN 13892-2)	1 Day	>6.0
	7 Days	>10.0
	28 Days	>16.0
Flexural Strength N/mm ² (EN 13892-2)	1 Day	>2.0
	7 Days	>4.0
	28 Days	>6.0
Consumption per mm thickness	1.98 kg / m ²	
Application thickness	Unfilled	2-10 mm
	Filled	Up to 30mm



FEATURES

- Suitable direct to adhesive residues, carpet tile tackifier and waterproof surface membranes
- Lay floorcoverings from 4 hours
- Application thickness from 2 – 10mm
- Can be filled up to 30mm
- Fast setting
- Protein Free
- Excellent self-smoothing properties

EN 13813:2002

The above standard refers to the properties and performance of the product and the specification to which it has been tested. The data shown confirms the minimum compressive and flexural strengths that the product will achieve.

PACKAGES

20kg lined paper sacks.
5 litre bottles.

HOW MUCH MATERIAL?

APPLIED THICKNESS	COVERAGE PER UNIT	CONSUMPTION PER 100m ² AREA	GRADED AGGREGATE
2-3mm	5.0m ²	20 units	n/a
5mm	2.5m ²	40 units	n/a
10mm	1.3m ²	79 units	n/a
30mm	0.6m ²	172 x powder and 86 x aggregate	

Note. Coverage rates are based on 5.0 litre addition and will vary according to the condition of the subfloor.

SURFACE PREPARATION

Floor surfaces must be suitably prepared; sound, dry (<75%RH*) and free from contaminants that may prevent adhesion. Use STYCCOCLEAN CI40 for removing grease, oil, polish, soap etc. from non-absorbent substrates.

Concrete and sand/cement screeds must be fully cured and any laitance or surface treatments must be removed. The temperature of the floor must be maintained above 10°C throughout the application and drying of the underlayment. Underfloor heating must be off for at least 48 hours before, during and after application.

Steel surfaces must be grit blasted to SA2½ or rotary disc/wire brushed to ST2, corrosion-free and clean. For detailed information, request the F. Ball Subfloor Preparation Guide.

PRIMING

Absorbent surfaces - in certain situations priming may not be necessary, for example, when installing textile floorcoverings. However, we would recommend priming with STOPGAP P131 diluted 4:1 with water to prevent uncontrolled drying of the underlayment, pin-holing and to aid the flow and workability.

*Prior to application onto damp concrete or sand/cement screeds prime with STOPGAP P131 diluted 1:7 with water.

Non-absorbent surfaces – Priming of sound flooring grade asphalt, firmly bonded adhesive residues, terrazzo and quarry tiles, and non-flexing steel surfaces is not essential. STOPGAP 1200 can also be applied directly to STOPGAP waterproof surface membranes within 24 hours of curing, providing there is no contamination. After 24 hours, or where underfloor heating is present, the membrane should be primed with neat STOPGAP P131.

Primers should be used in accordance with instructions printed on the bottle and must be allowed to dry before applying the smoothing underlayment.

MIXING

Standard Mix - Add 5.0 litres of STOPGAP 1200 Liquid into a STOPGAP mixing bucket and gradually add all the powder whilst stirring with a power whisk fitted in an electric drill until a smooth creamy lump free consistency is achieved. The material should be mixed for a minimum of 2 minutes.

Filled Mix - Add 12.5kg of STOPGAP GRADED AGGREGATE to the prepared standard mix. It is advisable to reduce the level of liquid to 4.75 litres to prevent separation of the mix.

Mix only with STOPGAP 1200 Liquid.

APPLICATION

Pour the mixed material onto the prepared substrate and allow to flow and attain a smooth finish. Minimal work with a smoothing trowel is required. A spiked roller should be used to eliminate entrapped air and smooth out flow lines to give a more uniform surface appearance. The mixed material should be applied at a thickness between 2mm to 10mm unfilled or up to 30mm filled, but can be taken down to a feather edge if required. For optimum smoothing and levelling characteristics, an overall thickness of at least 3mm should be maintained.

STOPGAP 1200 is self-smoothing, but should any imperfections remain they can be removed by rubbing with a carborundum stone when the compound will accept foot traffic – typically 60 minutes after application at 20°C. This time will be extended with reduced temperature i.e. approximately 2 hours at 10°C.

DRYING

Drying is dependent on the absorbency of the subfloor, ambient temperature and humidity.

On all surfaces, at a nominal 2 - 5mm thickness, the compound will be ready to receive most floorcoverings from 4 hours. At an applied thickness of 6 - 10mm, most floorcoverings can be installed after 24 hours. For thicknesses greater than 10mm and up to 30mm, the drying time will be extended up to 7 - 14 days.

When used to pre-smooth prior to the application of a STOPGAP waterproof surface membrane the underlayment should be left for a minimum of 24 hours before proceeding.

PRECAUTIONS

If applying to asphalt, ensure a minimum application of 3mm and a maximum application of 6mm is used and is applied uniformly. Not suitable for use over adhesive residues beneath surface damp proof membranes or over water softenable adhesive residues - these residues must be fully removed.

TOOLS

Suitable steel smoothing trowel, spiked roller, mixing bucket, electric drill and power whisk.

Wash tools with water immediately after use.

STORAGE

This product must be stored under cover, in unopened bags clear of the ground in cool dry conditions, protected from frost and excessive draught. Dampness will reduce the shelf life and may cause the powder to set in the sack.

SHELF LIFE

Powder: 6 months in unopened bags and stored under good conditions.
Liquid: 12 months in unopened bottles.

HEALTH & SAFETY ADVICE

This product is classified. Obtain the relevant Safety Data Sheet and follow the advice given. These can be found at www.f-ball.co.uk. Alternatively they can be obtained from the point of purchase or from F. Ball and Co. Ltd. at the address below.

Site conditions vary, to ensure this product is suitable and to confirm this data sheet is current, please contact our Technical Service Department.

For further information about F. Ball products or more detailed technical assistance, please contact:



Churnetside Business Park
Station Road, Cheddleton, Leek
Staffordshire ST13 7RS
United Kingdom

Tel: +44 (0) 1538 361633
Fax: +44 (0) 1538 361622
Tech Services Fax: +44 (0) 1538 361567
Email: mail@f-ball.co.uk

www.f-ball.co.uk

