

P26909
CANE GASKIN INTERIORS

10F4

Havana
Col. HAV 04
Cut Plan ② 900x500

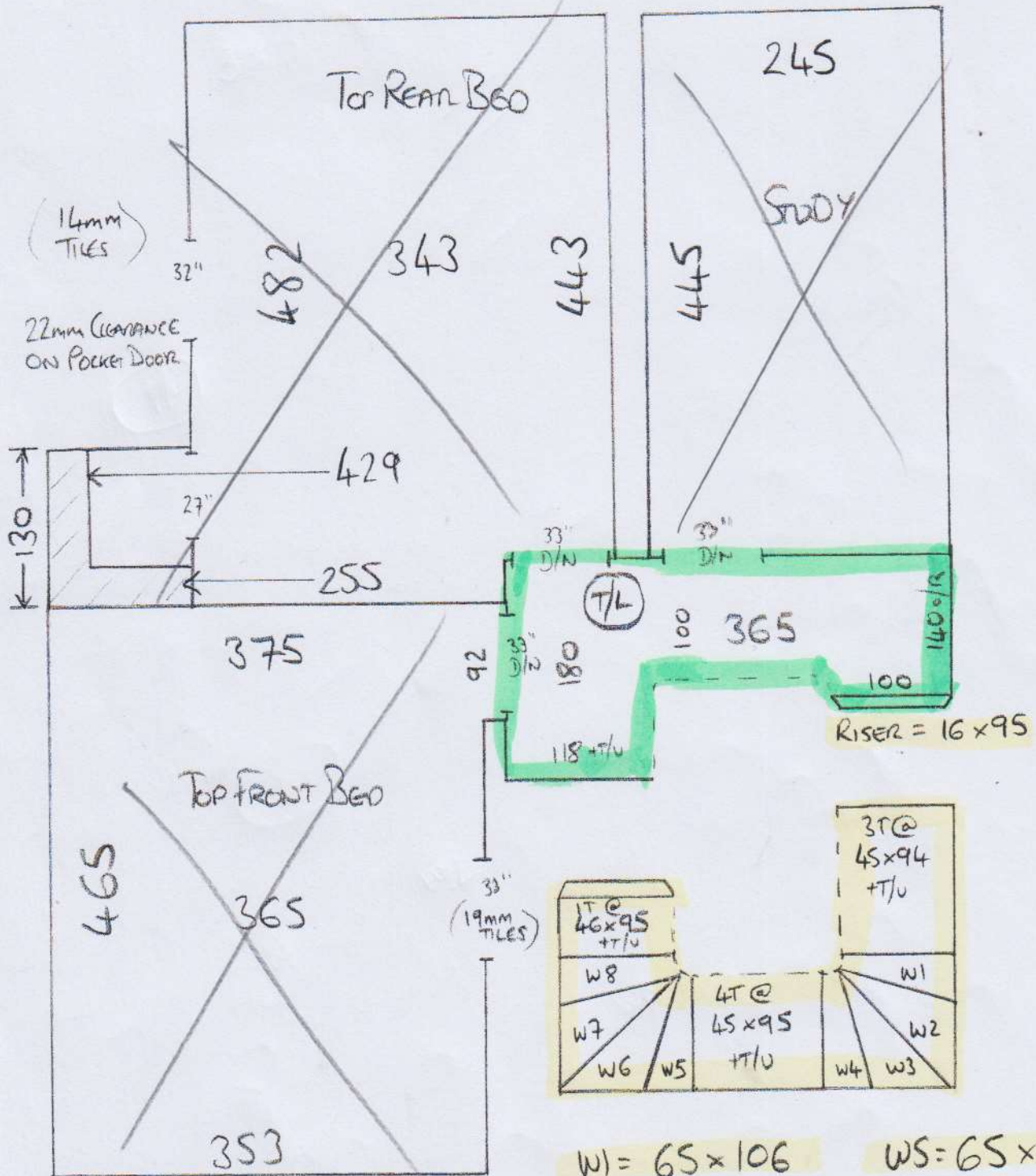
= 45m²

ALL STAIRS & WINDERS AS
BOUND RUNNERS

Cut ALL ONSITE (INC. STRAIGHTS)

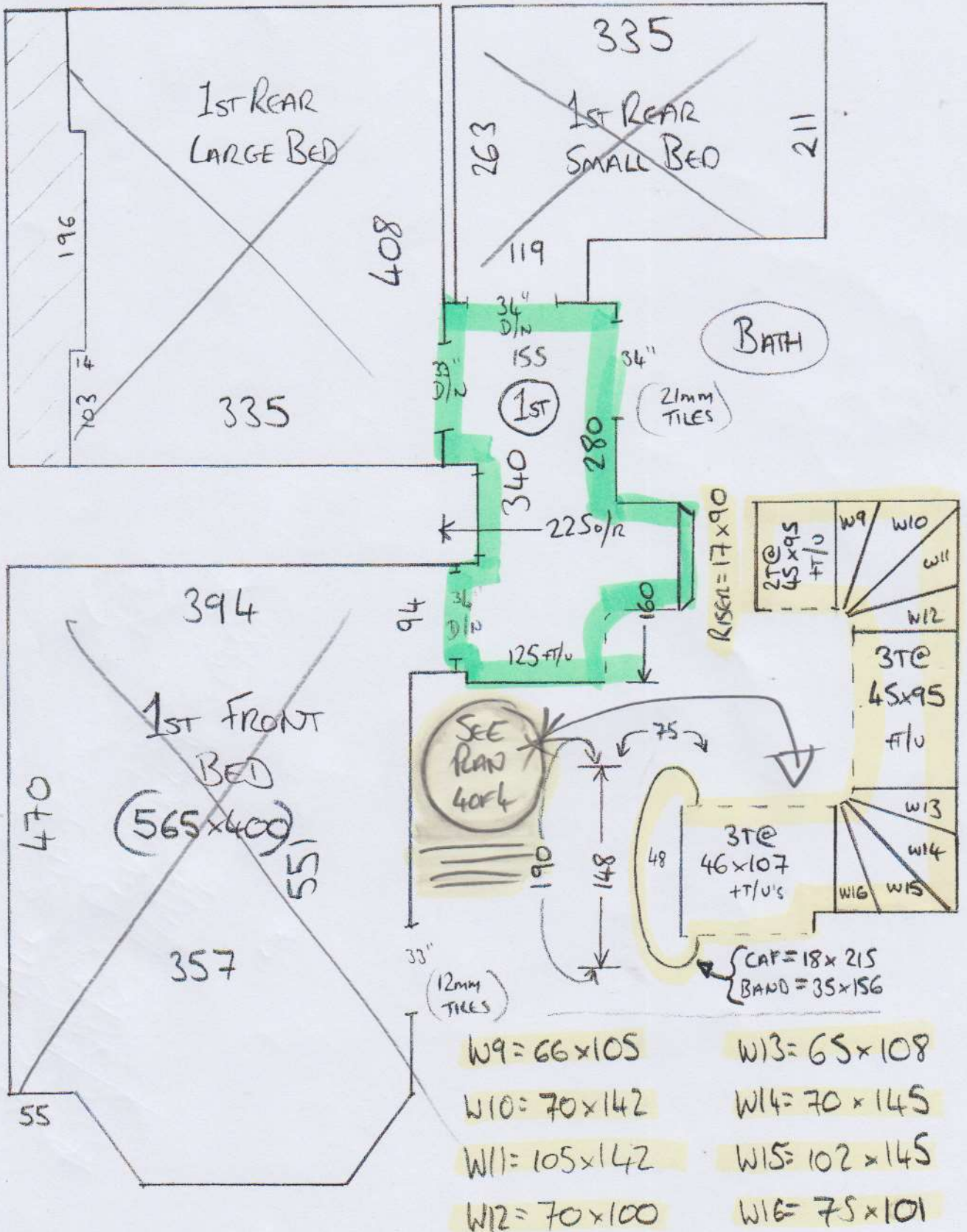
* STAIRS TO HAVE 10cm GAP EACH
SIDE - THIS WILL DETERMINE WIDTH *
OF RUNNERS

P26909
 CURVE GASKIN INTERIORS
 2 of 4

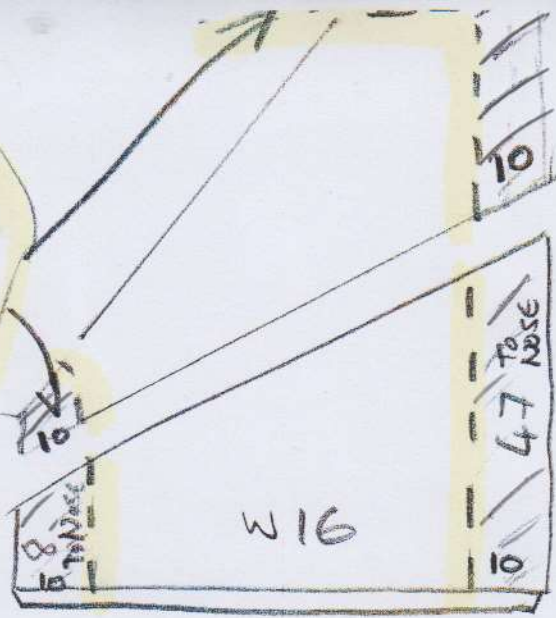


- W1 = 65 x 106
- W2 = 70 x 140
- W3 = 103 x 142
- W4 = 69 x 100
- W5 = 65 x 107
- W6 = 70 x 140
- W7 = 104 x 142
- W8 = 70 x 99

P26909
 CLARE GASKIN/ASTORIONS
 3044



10cm Gap To Be Kept Same Size Around Windows



P26909
CLARE GASKIN
INTERIORS

40K4

BOTTOM
STEPS
IN DETAIL

* KEEP RUNNER
SAME WIDTH
AS MAIN
FLIGHTS ON
THESE
FINAL STEPS

