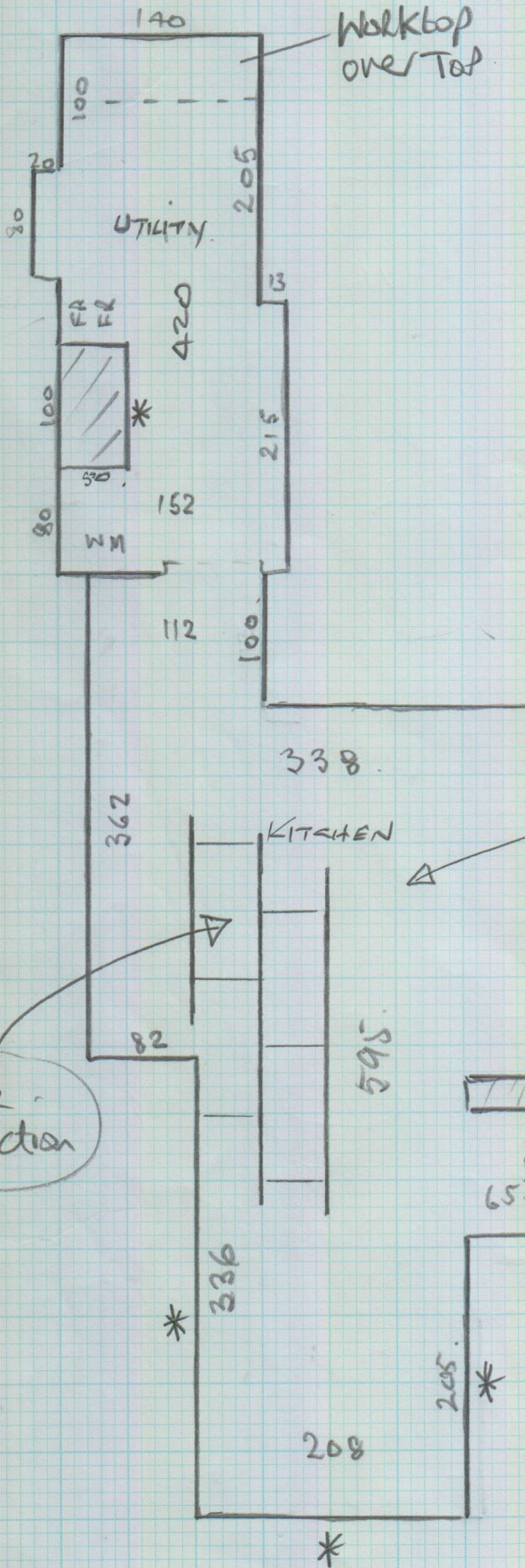


* See Instructions Sheet attached

Job No: P26921
 Name: Bloomfield
 Address:
 Tel: **1 of 2**
 Sheet:



* OPUS - Stone, Col.
SP213 urbus with
5mm AF05 feature
stripping between tiles

6.38
 17.61
 23.99 M²
 - 0.50
 23.49 M² NET

Large OAK table to be removed by Customer = 8 Boxes 23.34m² = 26.72m²

+ 8 packs of feature strip.

uplift

* Remove Plinths (Screwed on) & Plinthe details of Somebody to trim down if Nec.

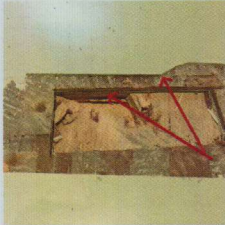
P26921
Bloomfield

20/2



Alarm Instruction On Entry

Hold key fob against top L/H corner to turn alarm off



Sub-floor prep

Take up top layer of 6mm ply & both layers of 2mm rubber flooring. Lay new 6mm ply & screed over with Stopgap 700 Flex. Lay tiles broken bond with 5mm feather strip between tiles



Tile Direction

Lay Opus - SP213 Urbus broken bond with 5mm AF05 feature stripping between tiles. Use universal adhesive due to South East facing Velux windows in roof



Alarm Instruction On Exit

Hold key fob against top L/H corner & then press 'Yes' to set alarm



Cleaning Products

Leave 1 x Karndean Clean Start pack with customer for her own use