

* See Vikki on arrival

Fit in this order:-

Flats 3, 4, 5, 6 + flat 1 (last)

If you need any assistance with tile edges where tile heights vary from one side to the other speak to Adrian & he will sort.

* underfloor heating T/OUT

* MUST stick all sledge & D/BARS

* Do NOT use any nails.

Phase 2

P27707

Mandara

Developments

1 of 7

Soft Velvet

Col. SV-671

Flat 5 - Top Bed 425×400

Flat 4 - Top Bed 415×400

Flat 6 - Lower Bed 275×400

Flat 5 - Lower Bed 360×400

Flat 4 - Lower Bed 355×400

Flat 3 - Lower Bed 285×400

2115×400

= $8460m^2$

Flat 6 - Top Bed 345×500

Flat 3 - Top Bed 345×500

(Fitted 17/8) ~~Flat 2 - Bed 2 300×500~~

Flat 1 - Middle Bed 325×500

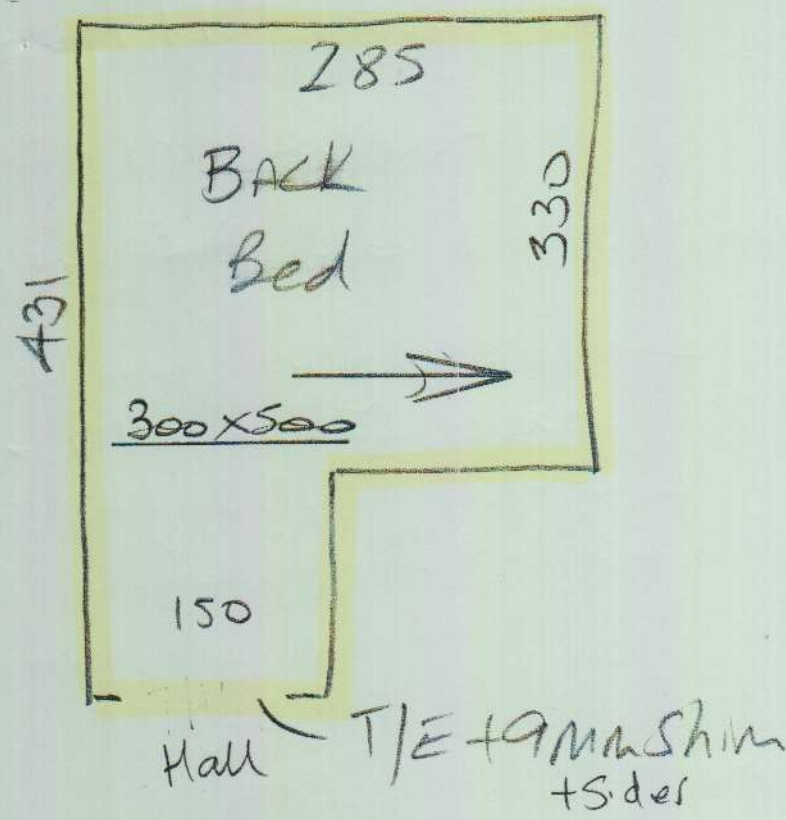
Flat 1 - Back Bed 300×500

1615×500

= $80.75m^2$

Total = $165.35m^2$

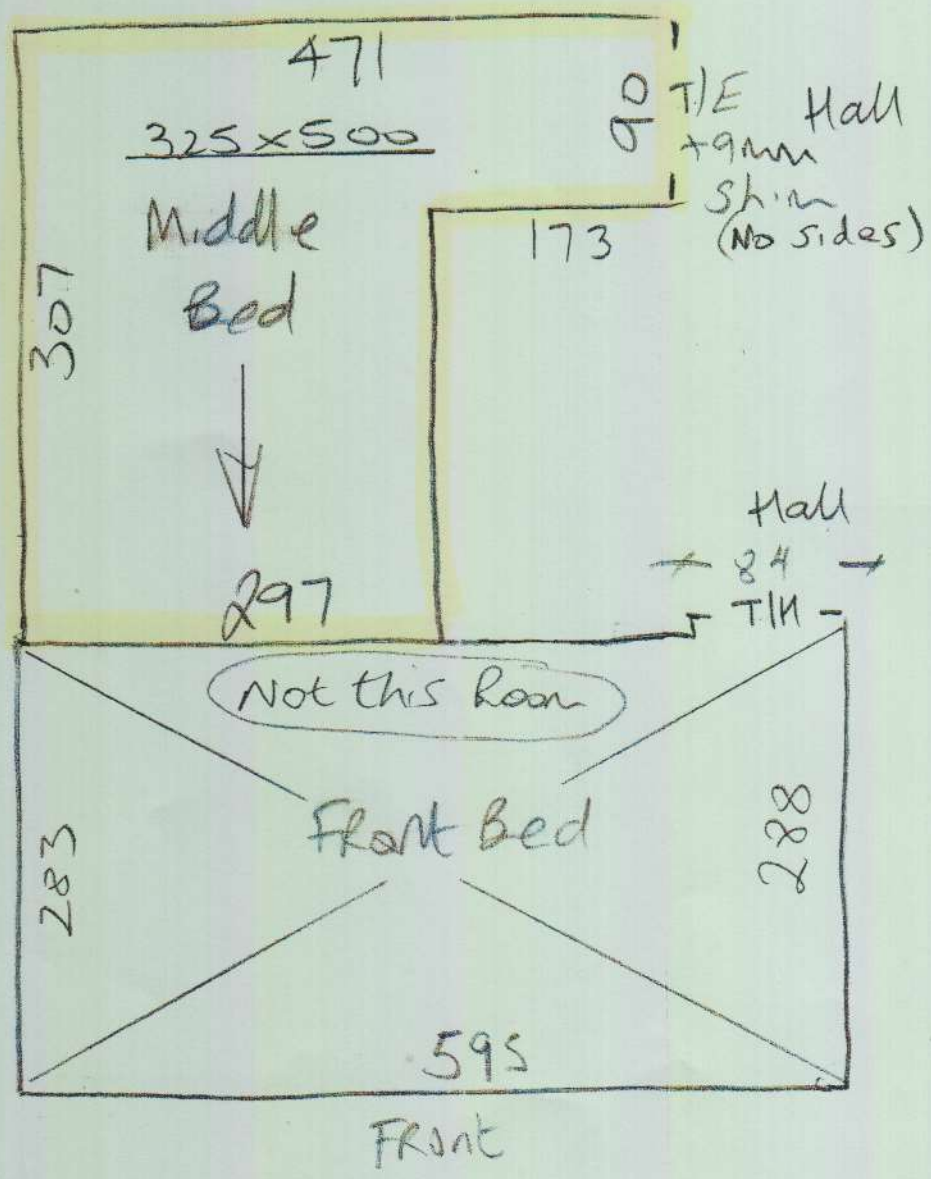
Flat 1



P27707
Mandara Dev.

2 of 7

U/Lay = 23.50m²
S/e = 20 sticks



Rough Concrete Floors
Could do with a good scrape & Patch Screed.

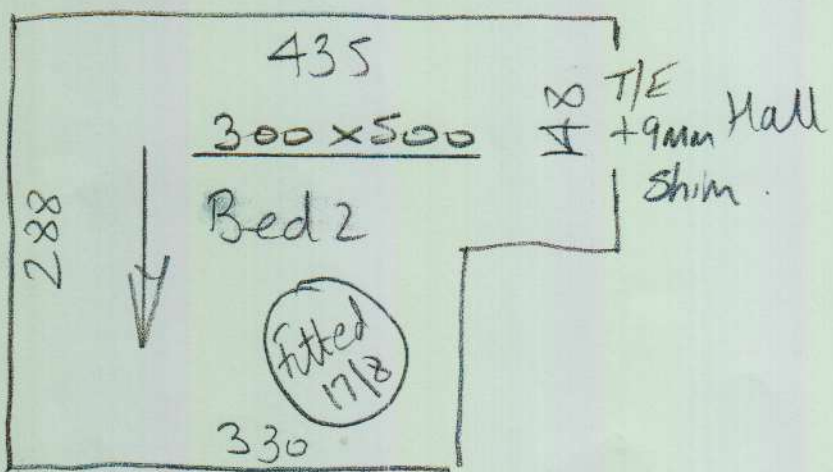
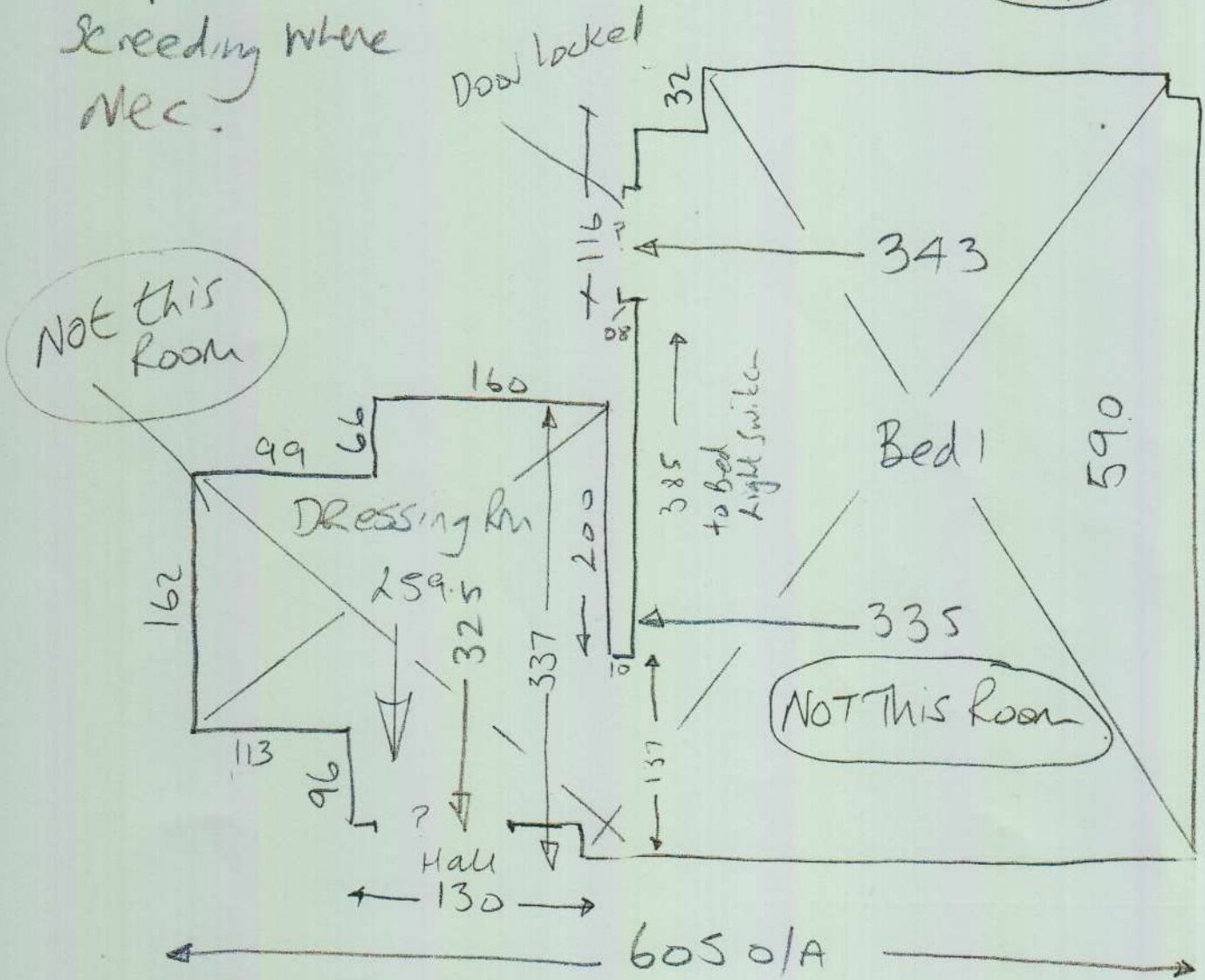
Flat 2

Rough Concrete floors

P27707
Mandara Dev.

Could do with a good
Scrape & patch
& reeding where
Nec.

3 of 7



U/Lay = 12m²
S/e = 10sticks

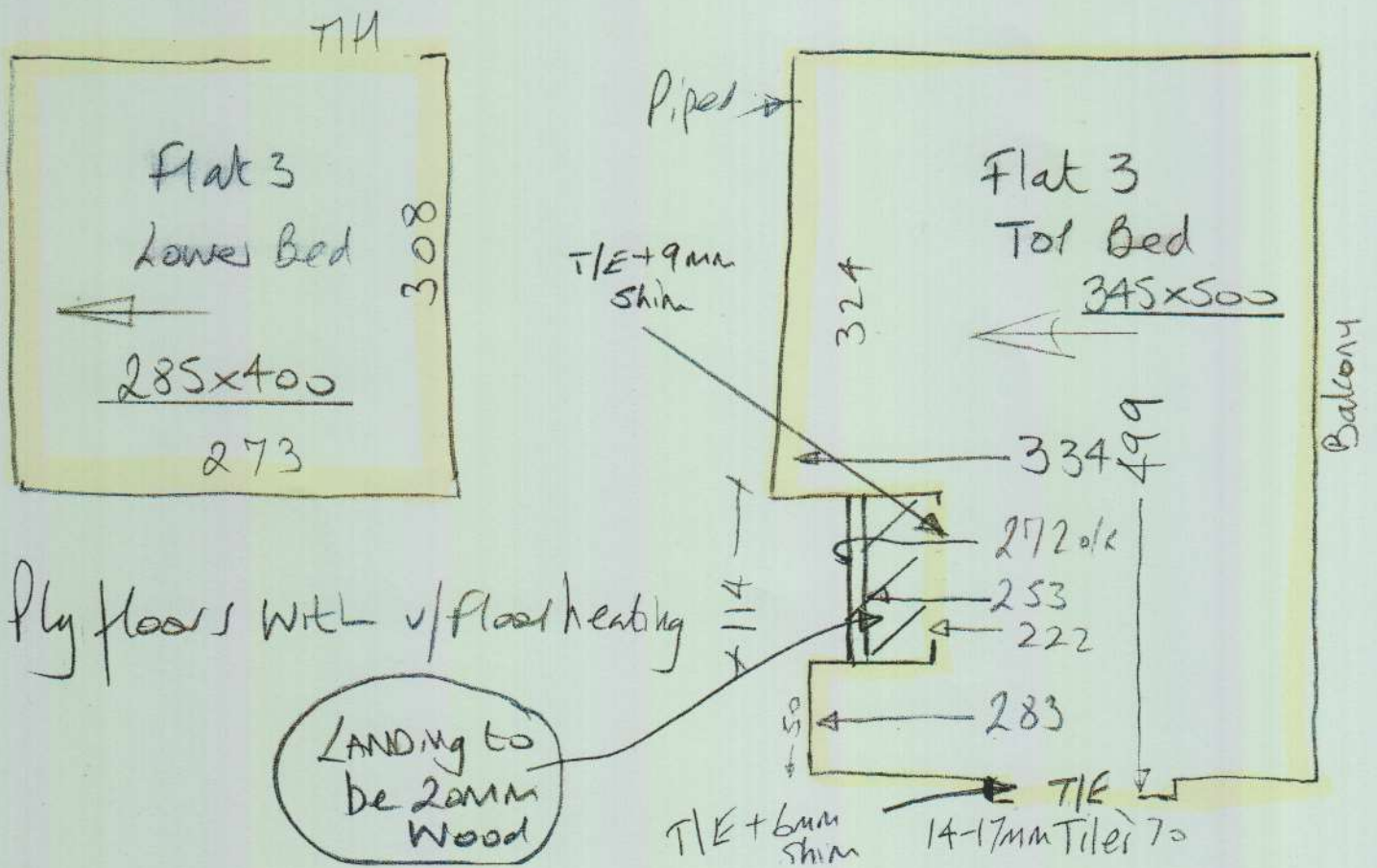
Flat 3

P27707
Mandara Dev

Top BATH = 6mm Shim + T/E
 Top Bed to Land = T/E + 9mm Shim
 Lower Bed to Hall = 9mm Shim + T/E

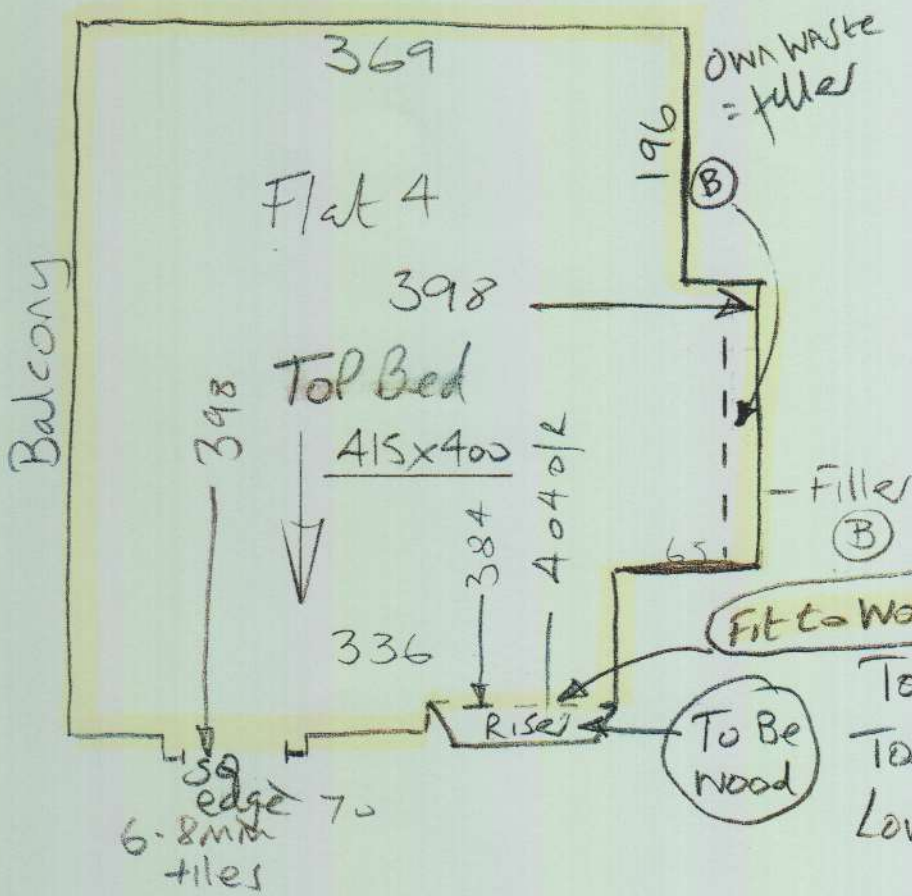
4 of 7

v/Lay = 25.50m²
 S/e = 19 sticks

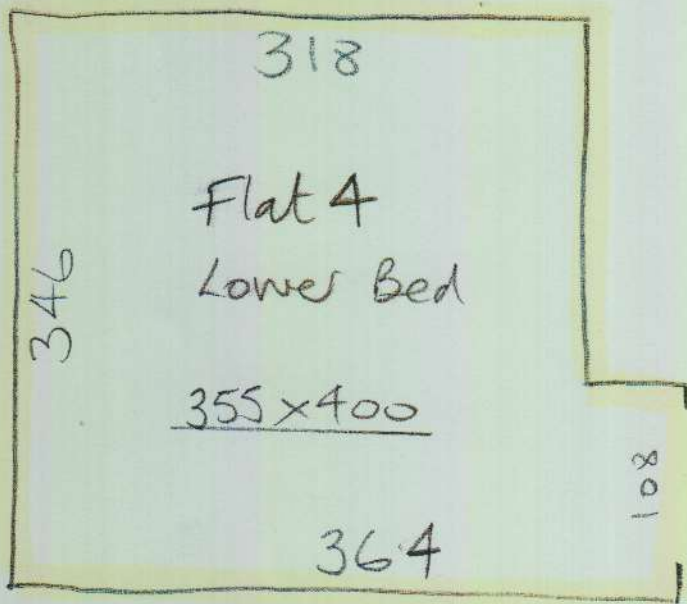


Flat 4

P27707
Mandara Dev.



Top Bed to BATH = SQ edge
Top Bed to STR = Wood nosing
Lower bed to Hall 9mm skin + T/E



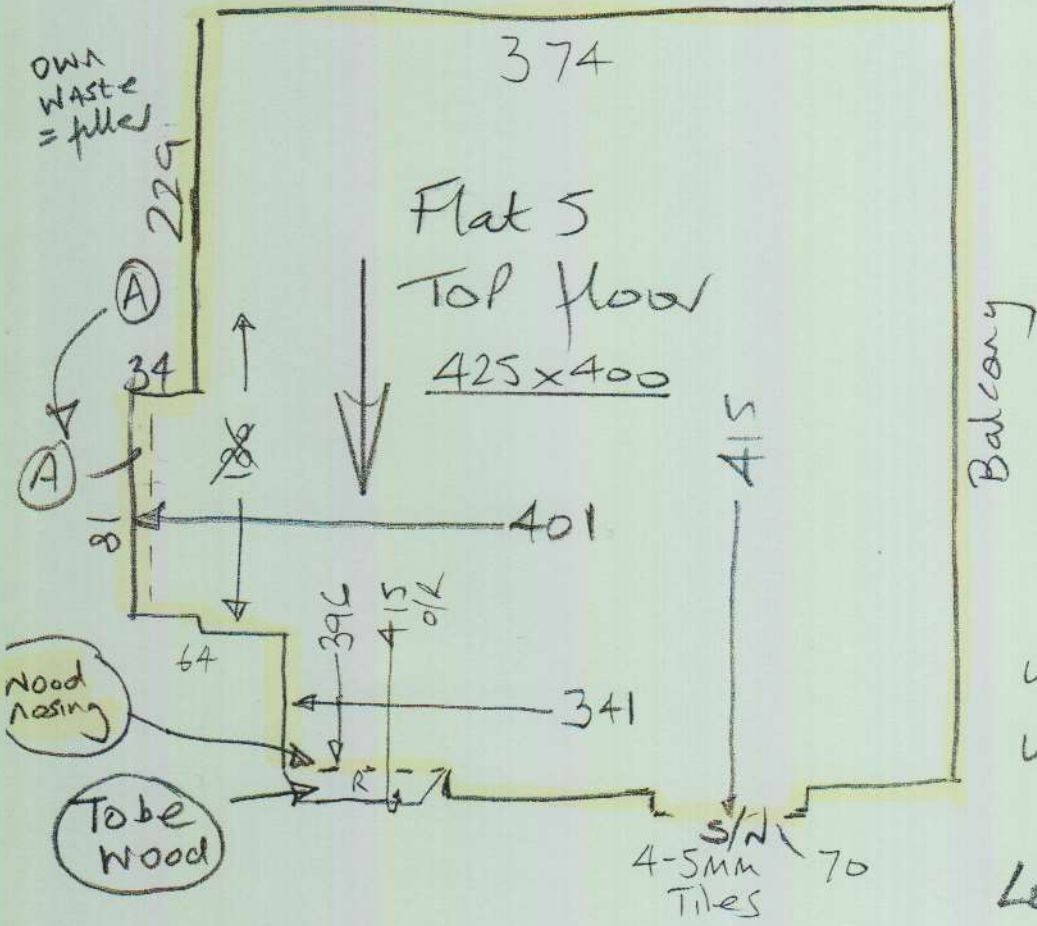
v/lay = 28.50m²
s/e = 20 sticks

Ply floors with v/flow heating

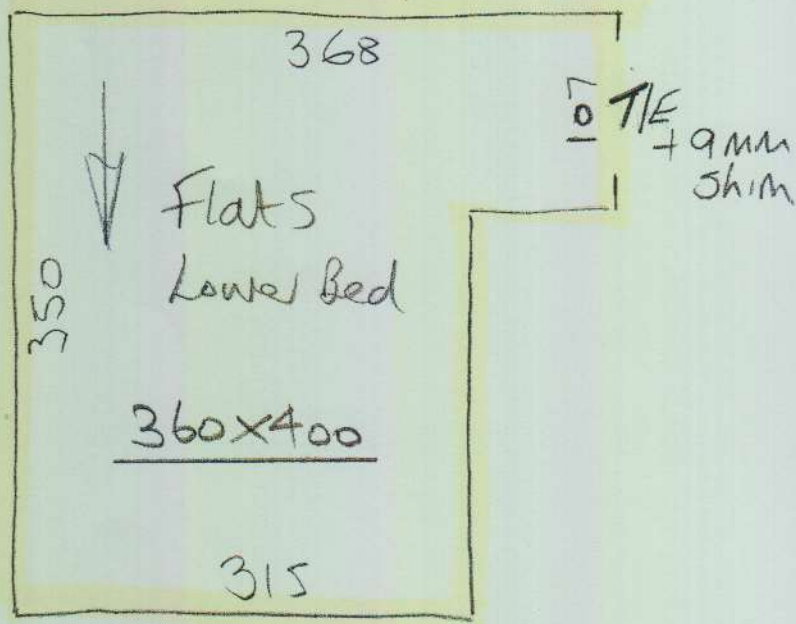
Flat 5

P27707
Mandava Dev.

6 of 7



upper bed to BATH = S/N
 upper bed to STKS = Wood nosing
 Lower bed to Hall =
 9mm Shim + T/E



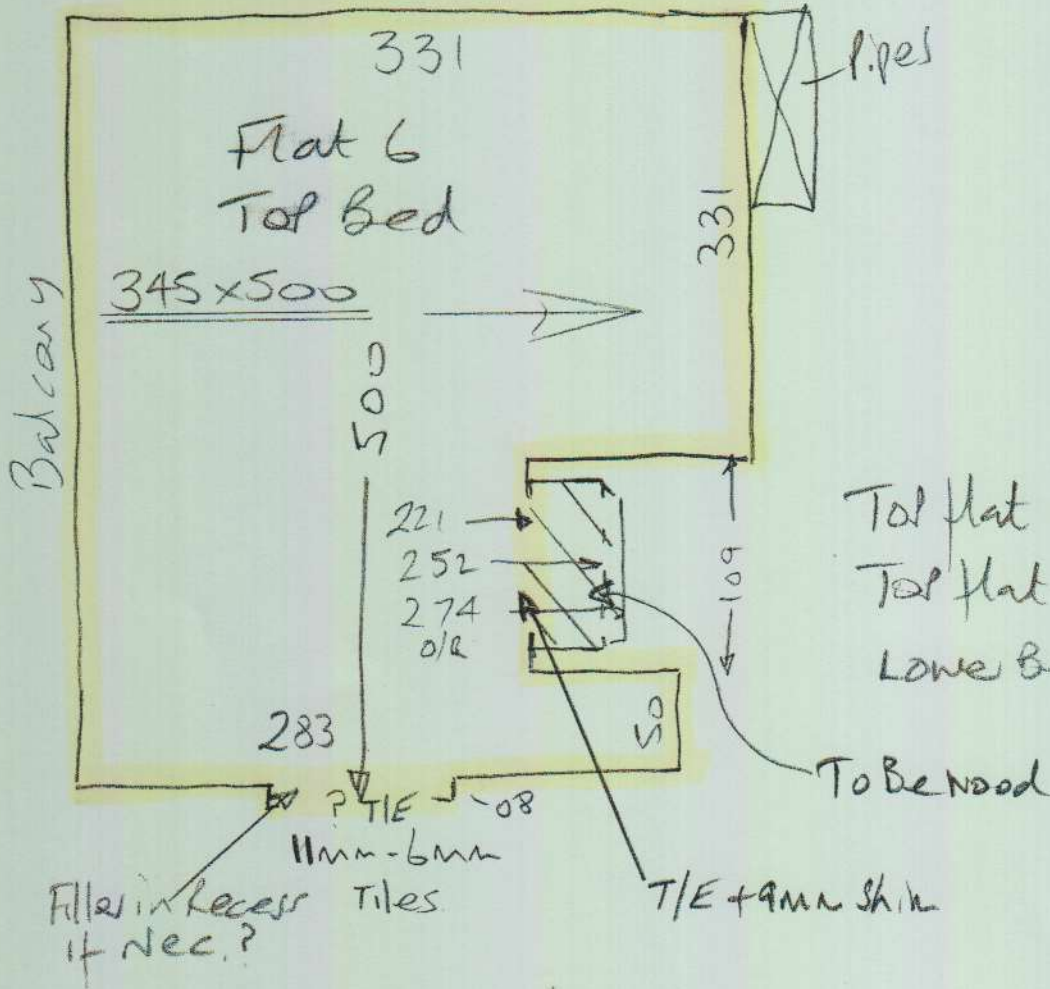
u/Lay = 29.25m²
 s/e = 21 sticks

Ply floors with u/Floor heating

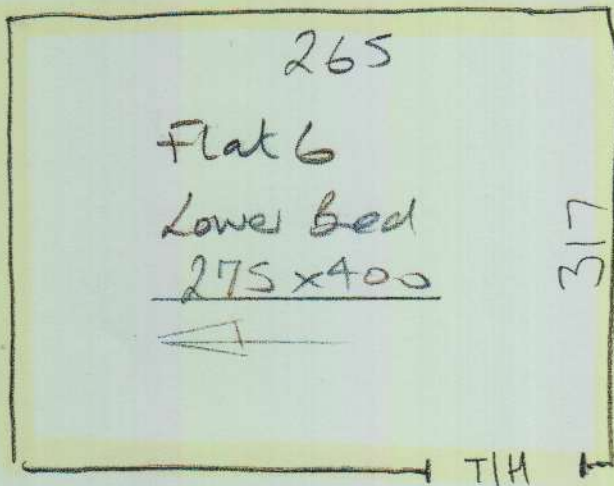
Flat 6

P27707
Mandara Dev.

7 of 7



Top flat to Bath = T/E (No Shim)
Top flat to Land = T/E + 9mm Shim
Lower Bed to Hall = T/E + 9mm Shim



v/Lay = 25.50m²
S/e = 19 sticks

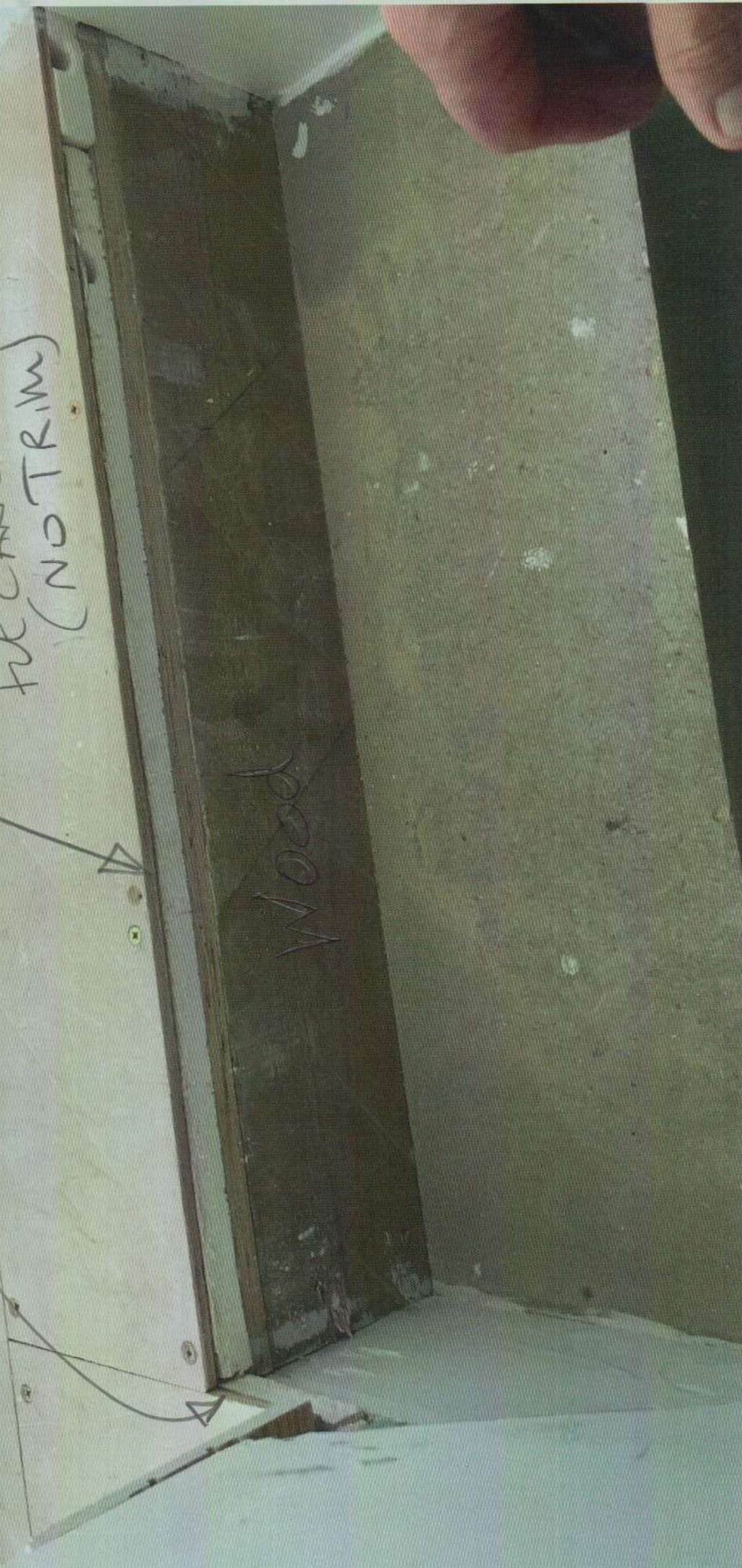
Plyfloors with upflow heating

P27707
Mendocino Dev

Flats
4#5

Builders to fit
* Wood nosing with
20mm upstand.
Fit carpet to nosing
(NO TRIM)

Wood



P27707
Mandara
Dev.



20mm
Thick

A
Fit Carpet to
Wood Nosing
(No trim)

Flats 4 + 5

P27707
Mandara Dev

Flats ~~3~~ 3+6

To Be Down Wood

File Nisheet
+ 9mm skin

