

Designatex 2141
Chalk white oak

Top Landing Cup'd 200x100
= 2m²

* Piece left at WH by
Mike from P27825 on 9/8

Key 9/8 + 10/8

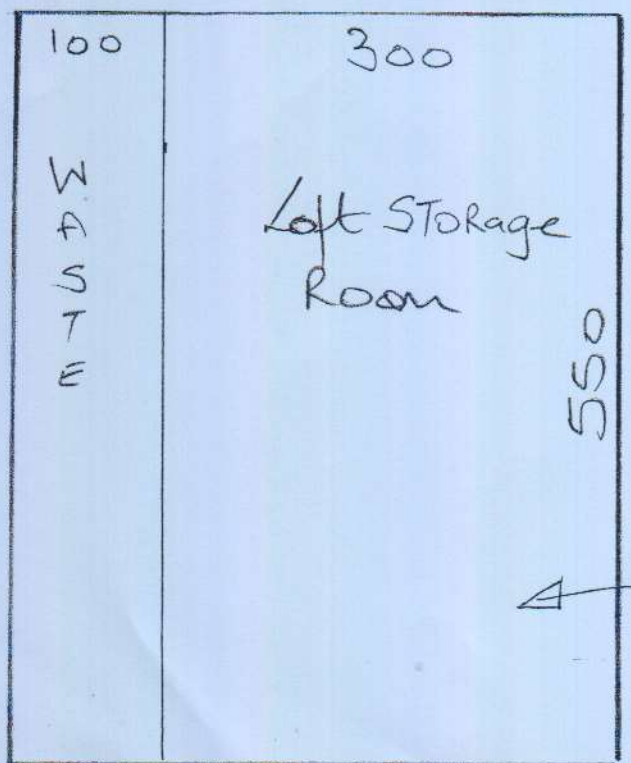
P27783
Bird Build LTD

1 of 3

Moduleo Select
Col. Classic OAK 24228

TOP BATH	3.68m ²
Main BATH	4.00m ²
ENSUITE	2.70m ²
	<u>10.38m²</u>
10% waste	1.04
	<u>11.42m²</u>

= 3 Boxes @ 3.88m²
= 11.64m²



Champion Twist (Felt Back)
Col. Indian Ivory

Cut Plan 550x400
= 22m²

* Cut down @ WH as
limited space in this
Room due to angled Ceiling

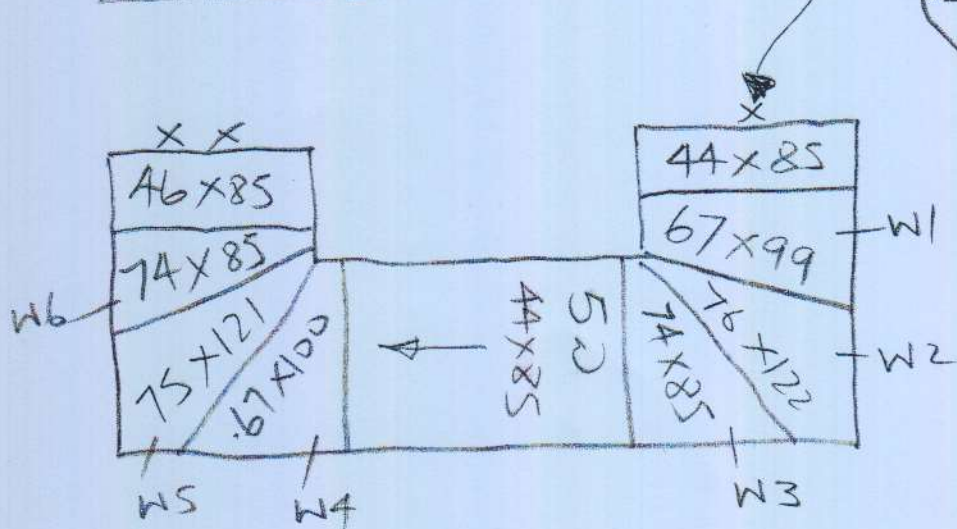
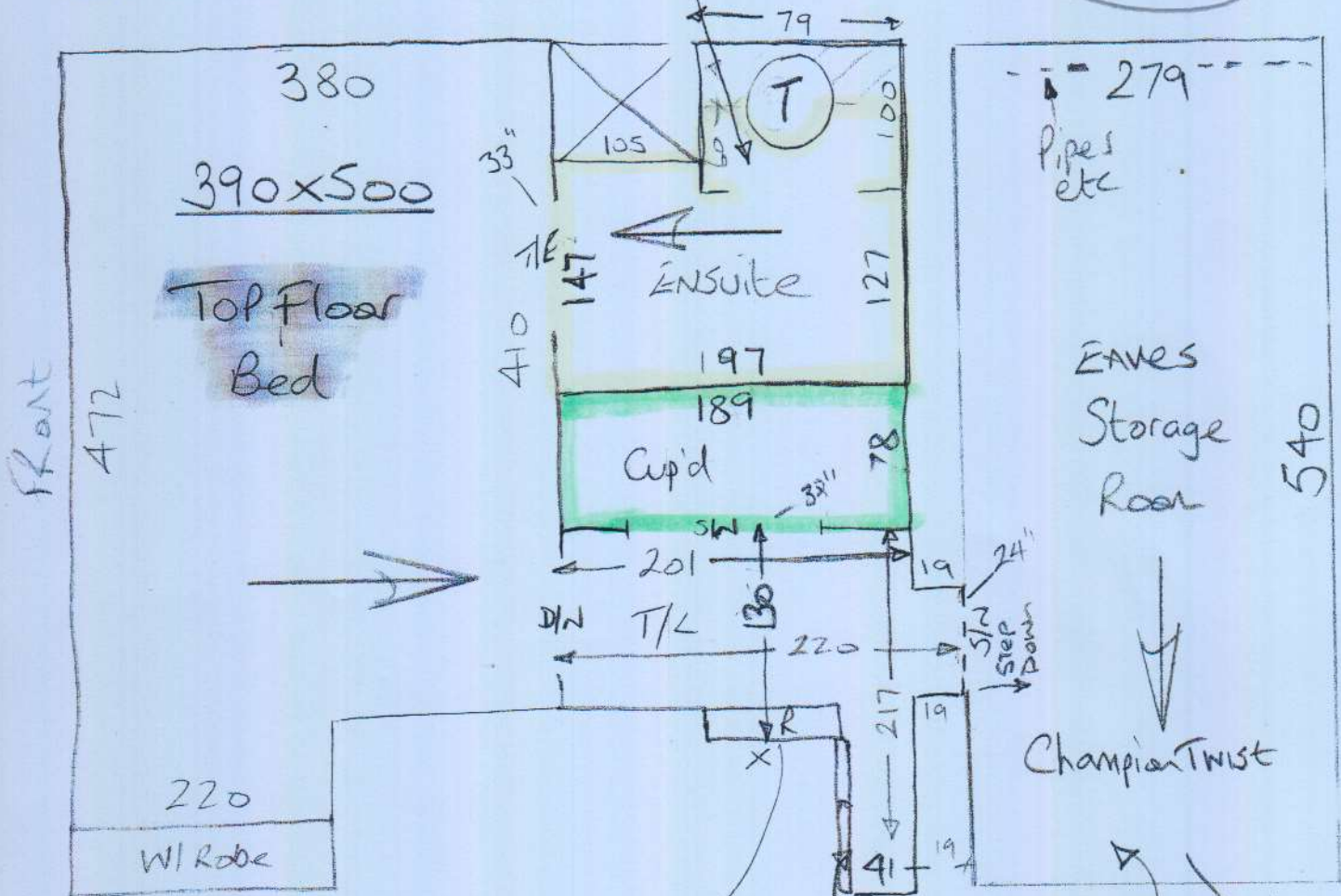
* Gate Code 1580
 Report to farmer Ray
 on arrival

P27783
 Bird Build LTD
 7 Hutton Mews

2 of 3

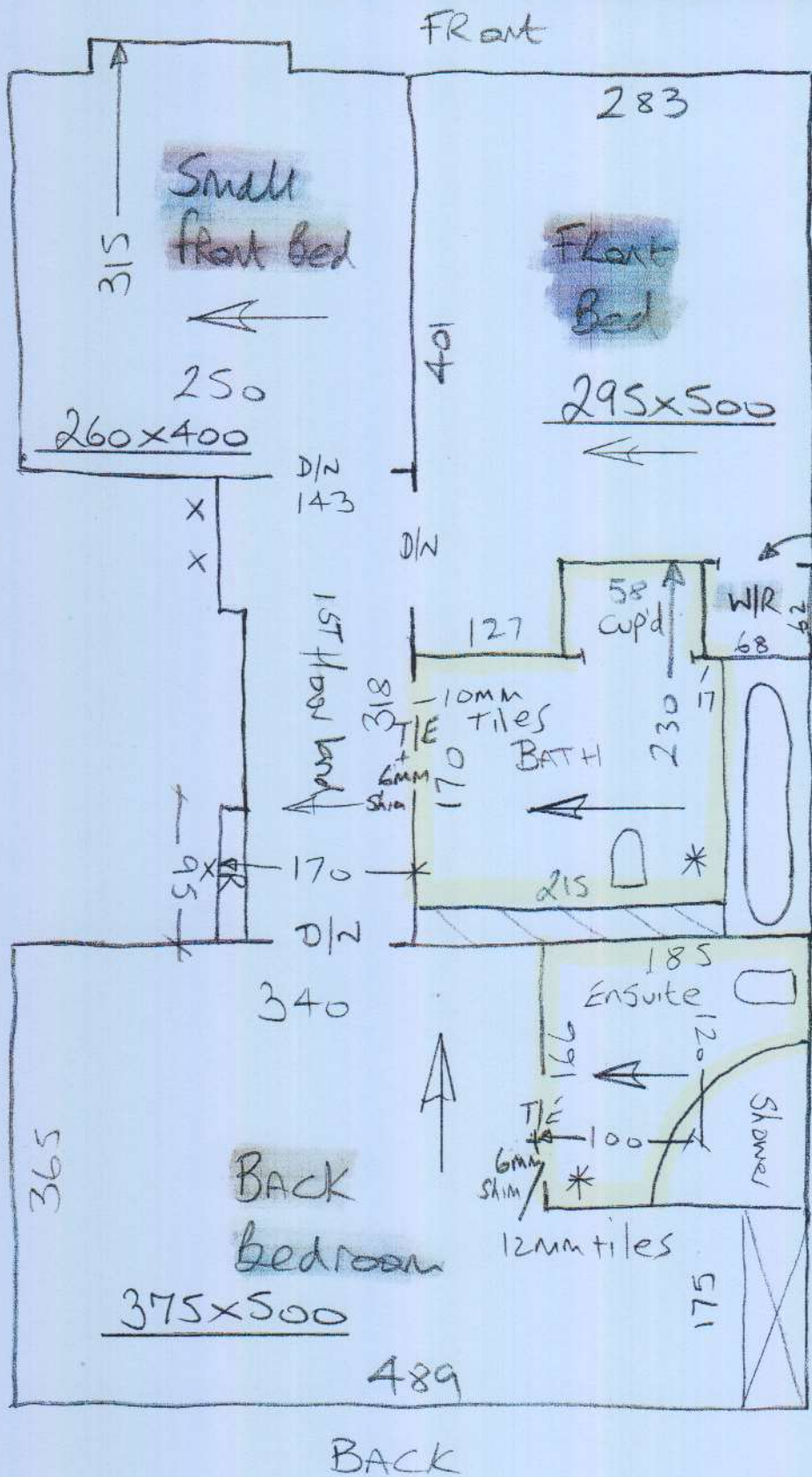
Top floor

Chipboard floor
 Lay 6mm ply
 & skin joints
 with feather



Felt Back
 Fix with
 SPRAY Glue

Chipboard floors



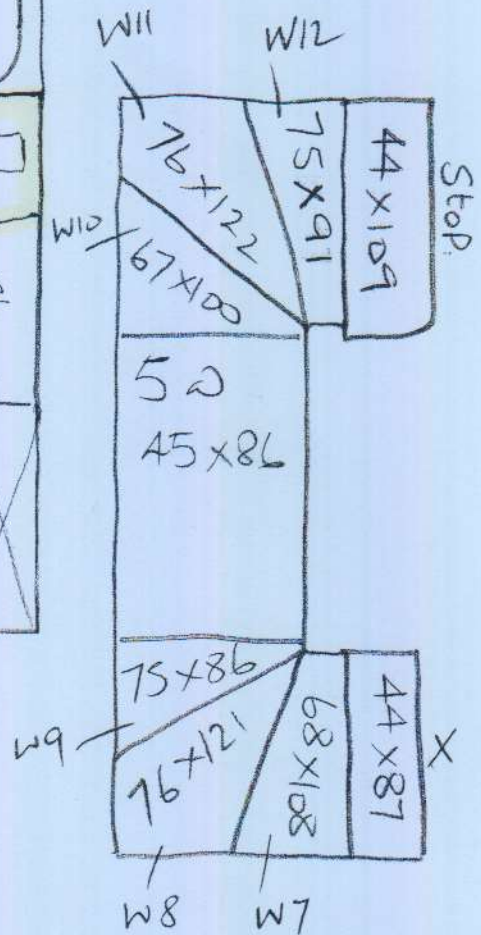
P27783
Bird Build LTD
7 Hutton Mews

3 of 3

157 floor

Run into Cup'd in one

* Ceramic tiles
Screed over top



Chipboard floors

Fit 6mm shim + T/E to both BATHS
on this floor