

* Replace Hall & part Living Room

P28391

KARNDLEAN ANT SELECT

-RLO2 Summer Oak

~~P27719~~
NATHANSON

3 ~~Packs~~ @ $3.25m^2 = 9.75m^2$

~~10/3~~

10/3

F/D

15mm T/H

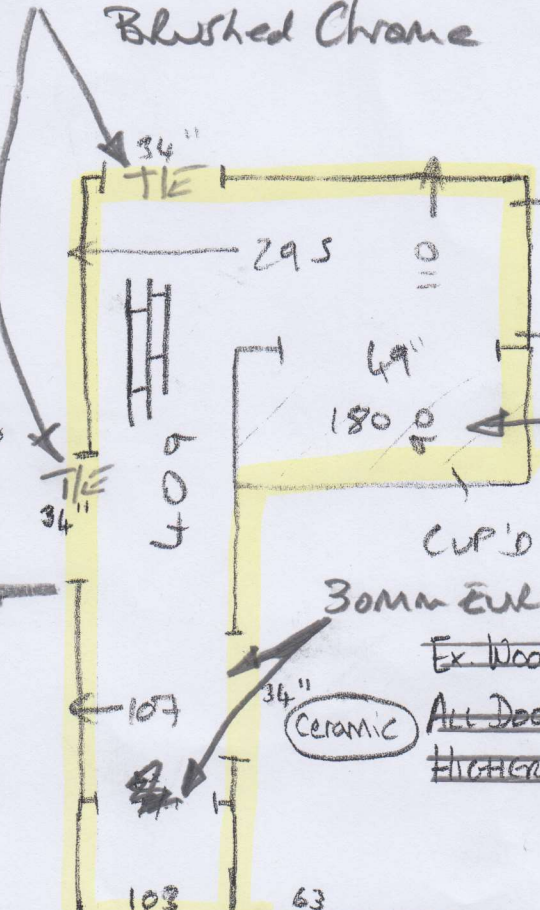
Hall = $6.45m^2$ NETT
 RECEPTION/KITCHEN = $21.24m^2$ NETT
TOTAL = $27.69m^2$ NETT

~~DAY 1 = Pull Screens, Remove Existing~~
~~SLOPED SCREEN + SCREEN LEVEL~~
~~WITH KITCHEN~~

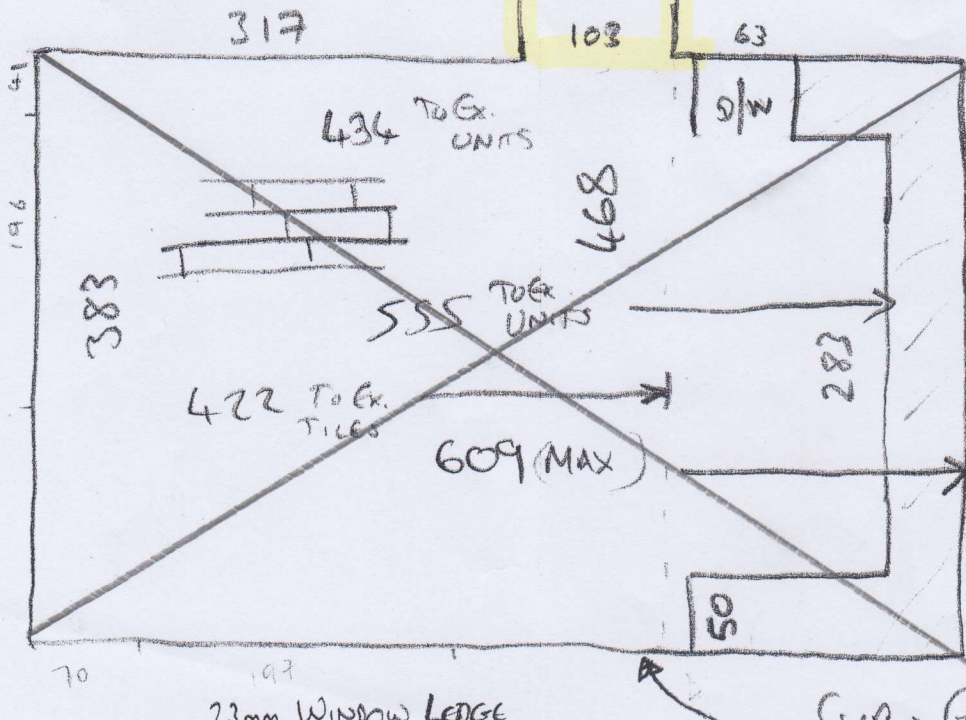
~~DAY 2 = LAY VERSILAY THROUGHOUT~~

~~DAY 3+4 = FIT KARNDLEAN~~

Double 2TM9
 Brushed Chrome



fit tile into cup'd



EX. TILES TOTAL
 16mm THICK
 (TILE + U/LAY)
 * BUILDER TO REMOVE *
 (EX. TILED SECTION)
 $4.2m^2$ NETT

SUB-FLOOR 1cm.
 SLOPE 50mm FROM

Double ZTM9

P28391
Nathan

2 of 3



Technical

34

Post fit cleaning tips: See page 92

Product

- The Premier Trim DoubleZTM9 range of door bars are manufactured using a base material of solid brass for a high quality installation.
- The Premier Trim DoubleZTM9 range are available in three lengths: 90cm, 180cm and 270cm.

Fitting

- The Premier Trim DoubleZTM9 range can be used for a carpet to carpet and carpet to hard floor installations due to an ingenious design feature.
- To transform the DoubleZTM9 into a Z Bar simply score along the peel line on the back of the base plate with a Stanley Knife and peel away with a pair of pliers.

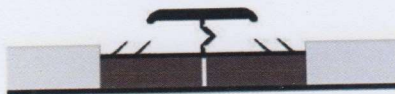


ANY QUESTIONS
Please call 01207 591176 For friendly expert advice.

- When used with thin underlays of 6mm and below the DoubleZTM9 can be fitted directly to the floor.
- Remember to 'Nap' down the DoubleZTM9 to give the carpet a firm grip on the pins.
- Be sure you have a 3mm or more gap between the underside of the top part of the Z Bar and the hard floor surface, this will allow you to 'Nap' down to secure the carpet on the pins.



- If you are using underlays of over 6mm or you have a high hard floor you can use Stairrods 'Easylocks' on page 31 to provide a convenient raised base for the DoubleZTM9 or Z Bar.
- Use individually or stack the 'Easylocks' to raise the base close to the level of the underlay and the top to at least 3mm above the hard floor. In a carpet to carpet situation this will allow the carpet to gain a better fix on the pins and with carpet to hard floor it will also raise the Z Bar sufficiently to allow a 'Nap' of 3mm or more to the floor surface.
- The 'Easylocks' should be placed at the fixing points and nailed through.



Care and Maintenance

- Satin Brass and Polished Brass Trims Lemon wipes will remove light tarnishing. However to keep the brass like new these two finishes will need to be polished from time to time with a propriety brass polish. Ensure that you follow the instructions on the tin and protect your flooring during polishing.
- Satin Nickel, Chrome, and Brushed Chrome Lemon wipes will remove light tarnishing. These finishes will need to be polished from time to time with a propriety metal polish. Ensure that you follow the instructions on the tin and protect your flooring during polishing.
- Pewter, Antique Bronze and Antique Brass Lemon wipes will remove light tarnishing. If these finishes become contaminated the only option is to polish them with a propriety metal polish and allow them to age again naturally. Ensure that you follow the instructions on the tin and protect your flooring during polishing.

30mm Floating Euro Cover

P28391

3 of 3



Technical



50

Post fit cleaning tips: See page 92

Product

- The Premier Floating Euro Cover range of door bars are manufactured using a base material of solid brass for a high quality installation.
- The Premier Floating Euro Cover range are available in three lengths: 90cm, 180cm and 270cm.

Fitting

- The Premier Floating Euro Cover range are for use on hard flooring installations and can be used on floating or stick down installations which are level.
- The Premier Floating Euro Cover range can accommodate expansion of up to 18mm when using the 50mm profile.
- Consider side ways expansion.

ANY QUESTIONS
Please call 01207 591176 For friendly expert advice.

Stick Down / Floating Installations

- On a level installation where one surface is stick down and the other is floating, or both surfaces float, use the Floating Euro Cover. The Floating Euro Cover can be stuck to either the fixed or floating surface but make sure you allow enough room for the maximum expansion. For floating floors remove the backing off one piece of the pre applied tape and stick down leaving the backing on the other piece to give a cushion. For fixed floors remove the backing off both pieces of the pre applied tape and stick down.
- **NOTE: For expansion information consult the flooring manufacturers specifications.**

20mm Floating Cover



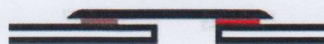
30mm Floating Cover



40mm Floating Cover



50mm Floating Cover



Care and Maintenance

- Satin Brass and Polished Brass Trims Lemon wipes will remove light tarnishing. However to keep the brass like new these two finishes will need to be polished from time to time with a propriety brass polish. Ensure that you follow the instructions on the tin and protect your flooring during polishing.
- Satin Nickel, Chrome, and Brushed Chrome Lemon wipes will remove light tarnishing. These finishes will need to be polished from time to time with a propriety metal polish. Ensure that you follow the instructions on the tin and protect your flooring during polishing.
- Pewter, Antique Bronze and Antique Brass Lemon wipes will remove light tarnishing. If these finishes become contaminated the only option is to polish them with a propriety metal polish and allow them to age again naturally. Ensure that you follow the instructions on the tin and protect your flooring during polishing.