

P28407

~~P27763~~
Poppins Nurseries
165 New Kings
Road

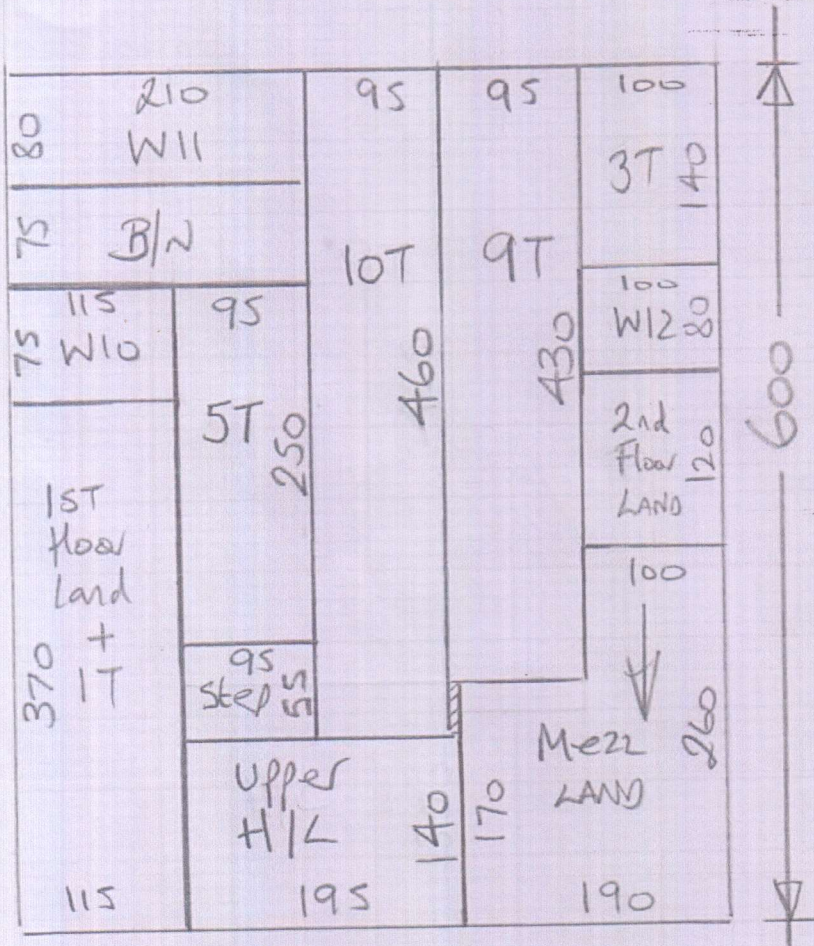
1 of 2

Ultima Major
Col. Bluebird

Cut Plan 600x500
= 30m²

* Fit new formalux
u/Lay to 1st flight
of STAIRS only.
Re-use ex u/Lay
elsewhere.

STAIRS from Ground to 2nd floor
(excluding stairs up to office)

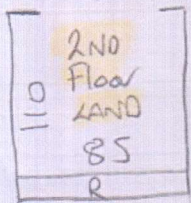


Re-use ex sledge. ^{+D/BARS} ~~Change All Doorbars to Polished Chrome~~

* ~~ASK Glen the Handyman to remove protective door shields so you can change the door bars (if not already removed?)~~

STOP Here (Not doing STAIRS up to office)

~~NEW~~
EX
2/2



P28407

~~P27163~~

Poppins Nurseries
165 New Kings Rd
Sw6

20/2

3a) 45x84 + Turn

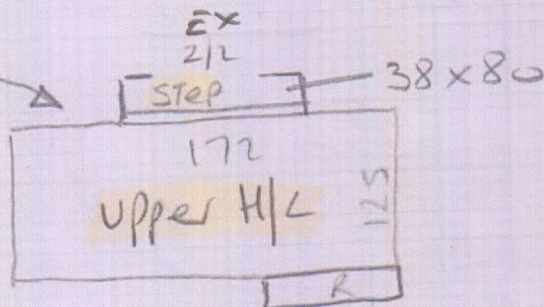
H/L 125x172 + step 38x80 (2/2)

9a) 45x85 + Turn

W10 65x100

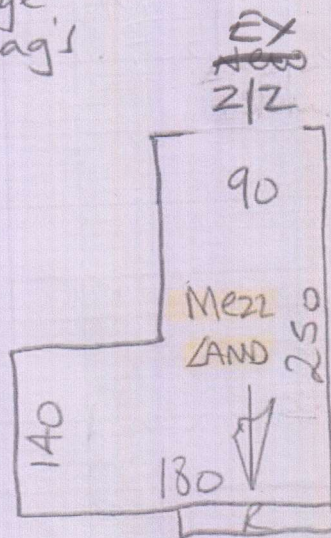
W11 70x115

W12 70x80



1a) 42x84 + Turn

EX 2/2
EX 2/2
EX laminate T/Holds are broken. Change to Chrome Zig Zag's



14a) 45x83 + Turn

BIN 60x135