

P29010  
HDWE

Freedom Twist

Col. 460 HAZELNUT

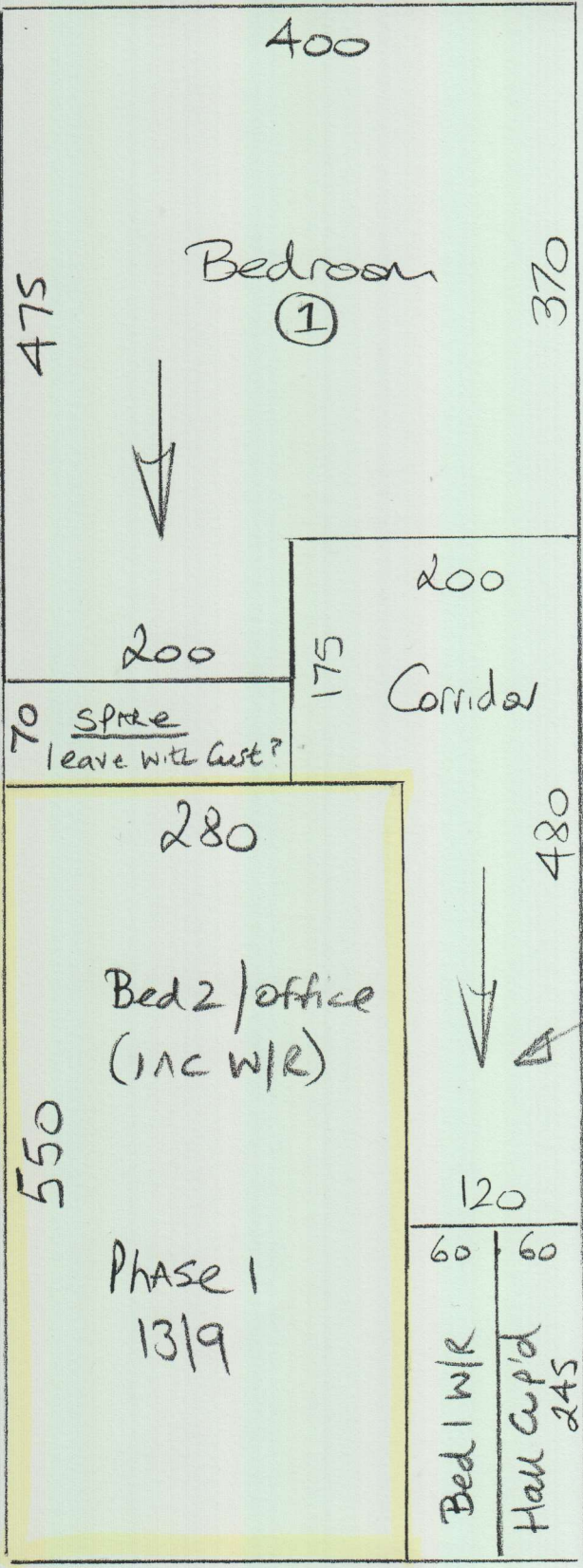
Cut Plan ①  $980 \times 400$   
 Cut Plan ②  $1095 \times 400$   
 $2075 \times 400$   
 = 83M<sup>2</sup>

PHASE 1 - 13/9 - 1ST Call

Access via Gary the decorator 07889-807808

\* MUST Hoover flat & Common Parts on Completion.

②



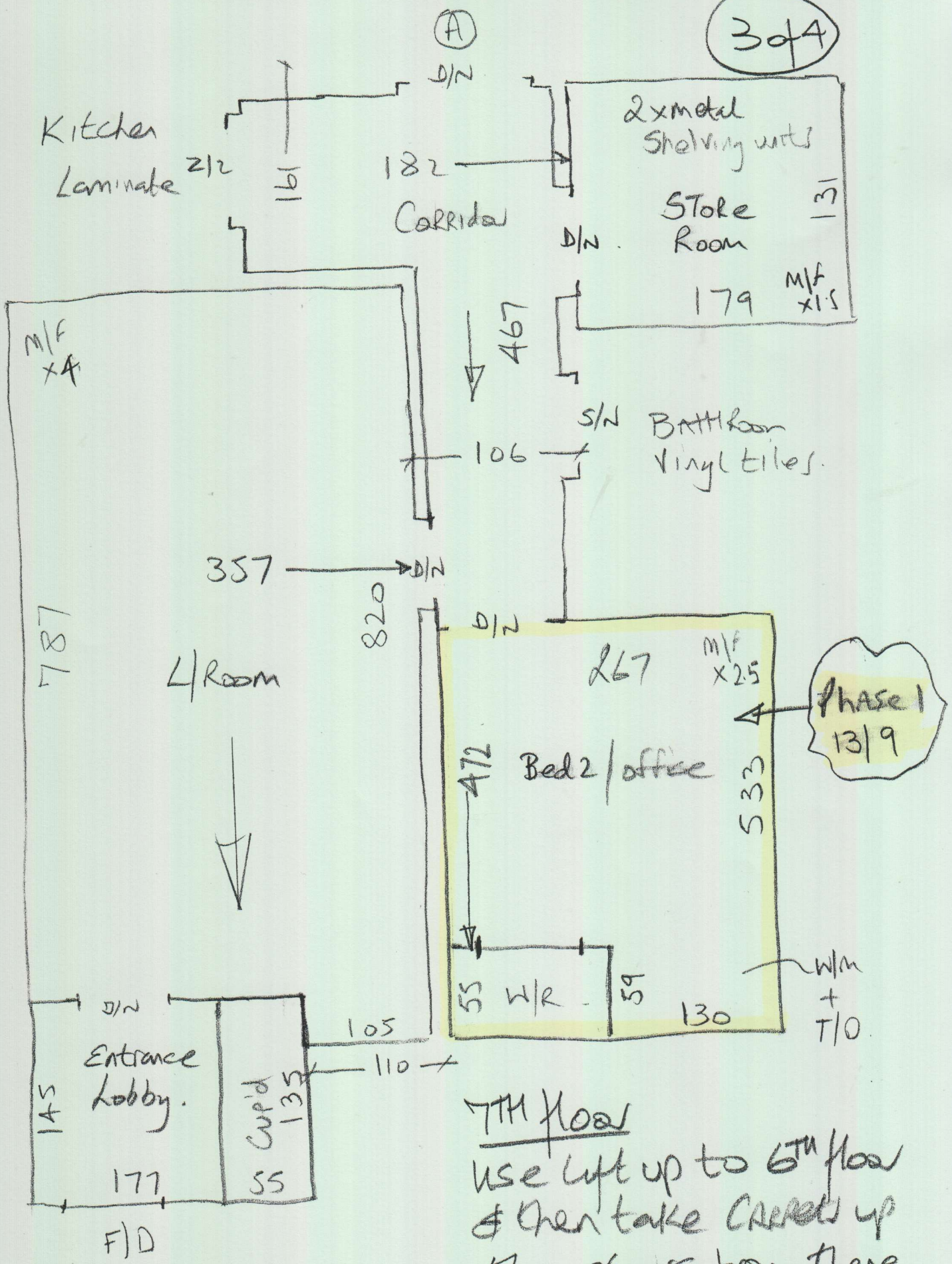
P29010 HdWE

②44

\* MARK UP  
Remainder of  
Cut plan &  
Store w/WH  
for future  
fitting

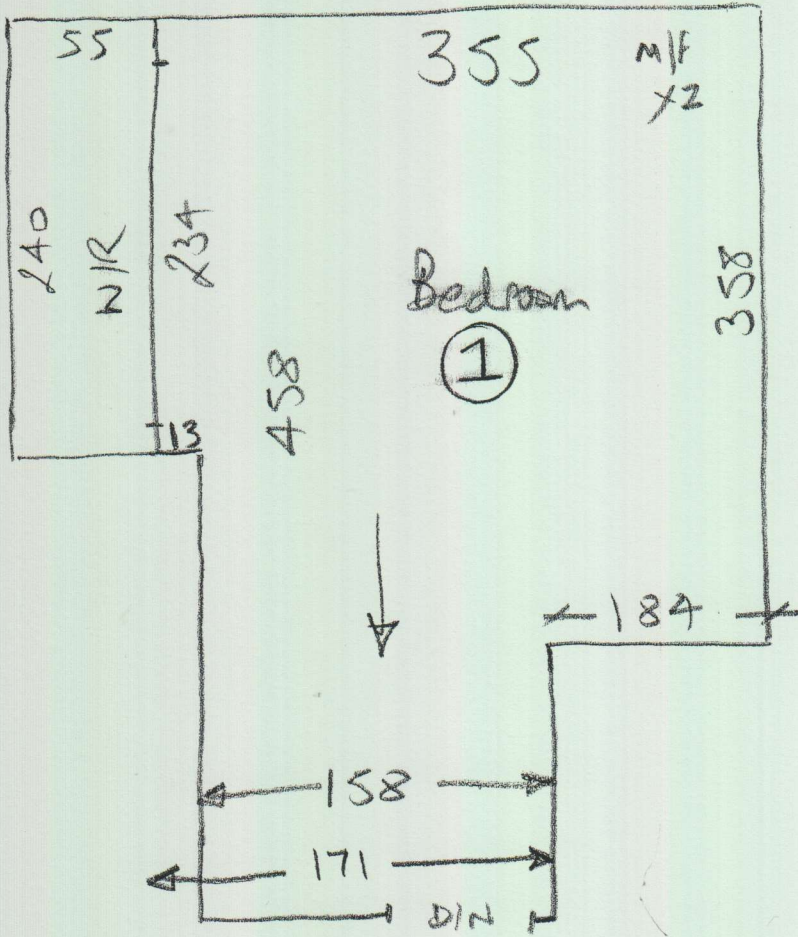
P29010-Hdwe

3 of 4



7TH floor

Use lift up to 6TH floor  
& then take Corridor up  
the stairs from there.



P29010  
Hdwe

4x4

Ⓐ