

P29010  
HdWE

① of 4

Freedom Twist

Col. 460 HAZELNUT

Cut Plan ①  $980 \times 400$

Cut Plan ②  $1095 \times 400$

$2075 \times 400$

$= 83m^2$

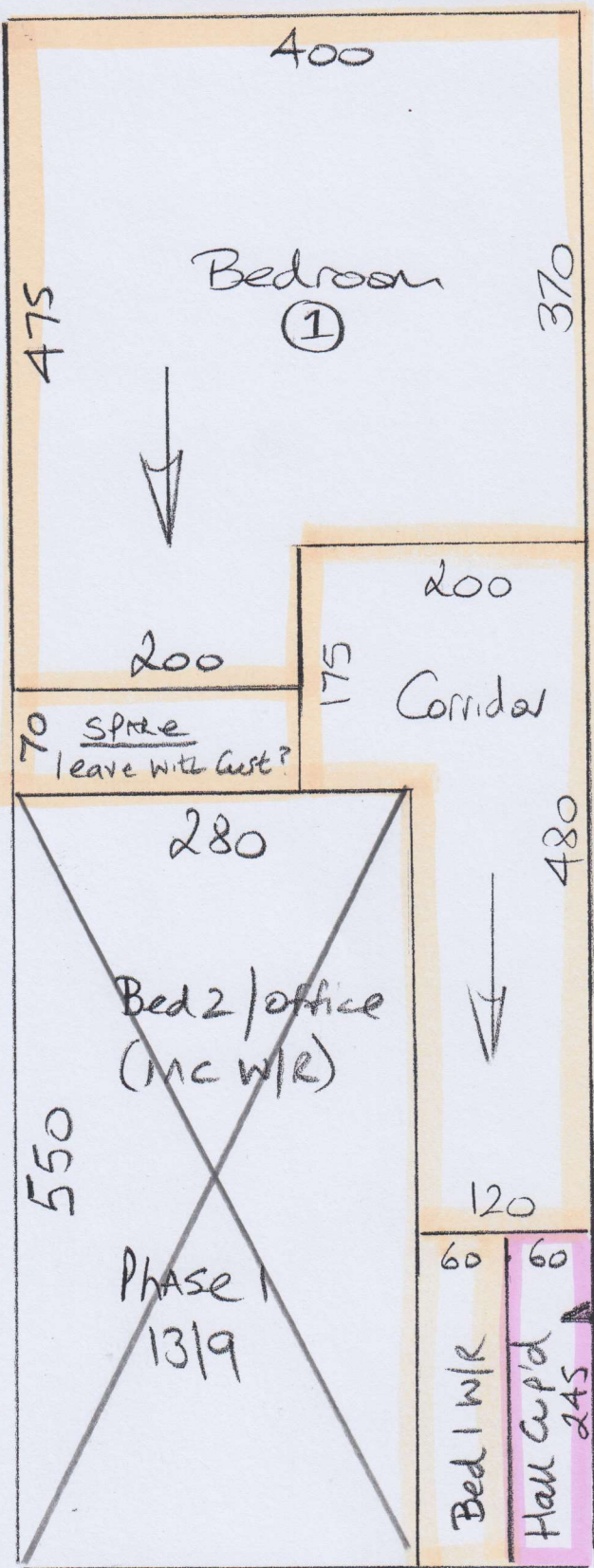
PHASE 1 - 13/9 - 1ST Call

PHASE 2 - 20/9 - 3RD Call

Access via Gary the decorator 07889-807808

\* MUST Hoover flat & Common Parts on Completion.

②



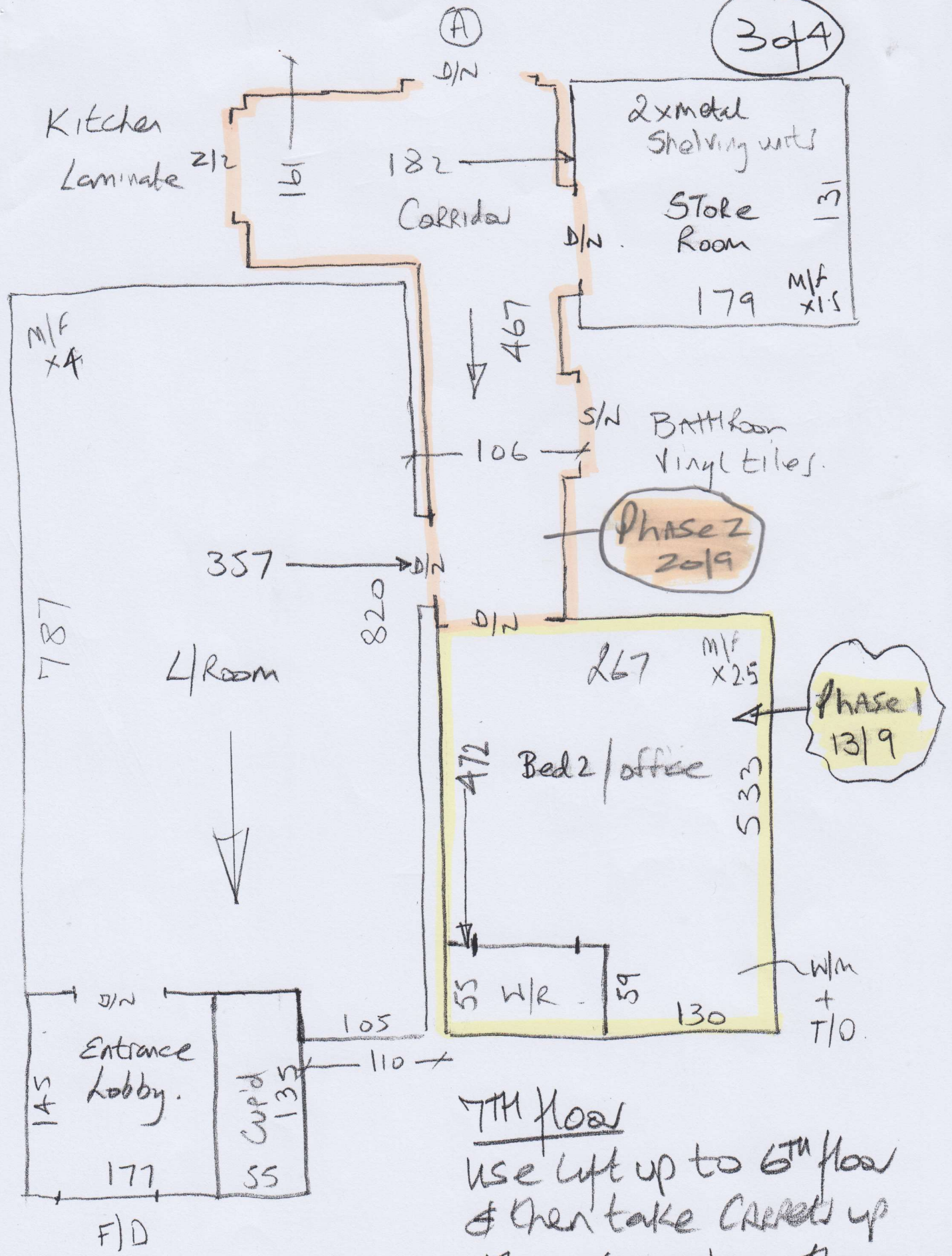
P29010 HdWE

②44

Phase 2 - 2019

\* MARK UP  
 Remainder of  
 Cut plan &  
 Store w/WH  
 for future  
 fitting

3 of 4



7TH floor  
 Use lift up to 6TH floor  
 & then take stairs up  
 the stairs from there.

