

Phase 2 - Supply only  
Collect on 22/7

P29104  
 TE Design & Build

1 of 8

Arabica  
Col Truffle

- ~~Cut Plan ① 775 x 500~~
- ~~Cut Plan ② 330 x 500~~
- Cut Plan ③ 640 x 500
- Cut Plan ④ 595 x 500
- Cut Plan ⑤ 725 x 500 (PART)
- Cut Plan ⑥ 475 x 500 (PART)
- Cut Plan ⑦ 715 x 500
- Flat 5 Bed 450 x 500
- Flat 7 Bed 450 x 500

$$51.55 \times 500 = \underline{\underline{257.75 \text{ m}^2}}$$

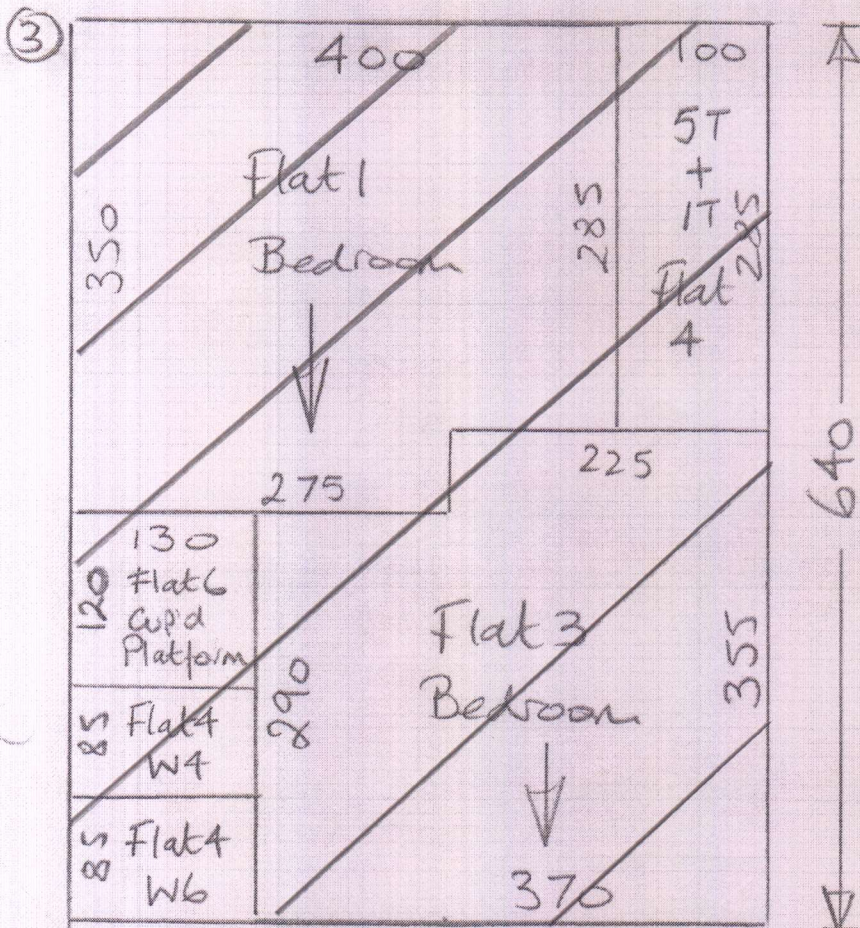
\* Must floor on completion as they have viewings @ W/E

Phase 1

Billy - Fri 21/6 = Flats 1, 3 + 4

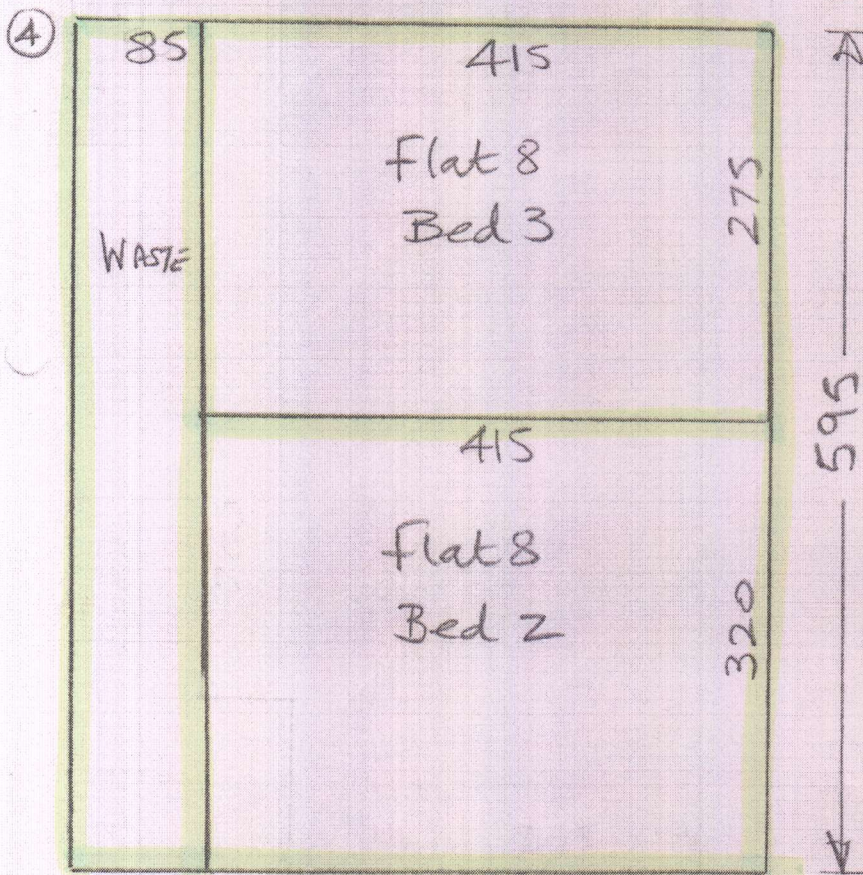
Martin - Fri 21/6 = Flat 6

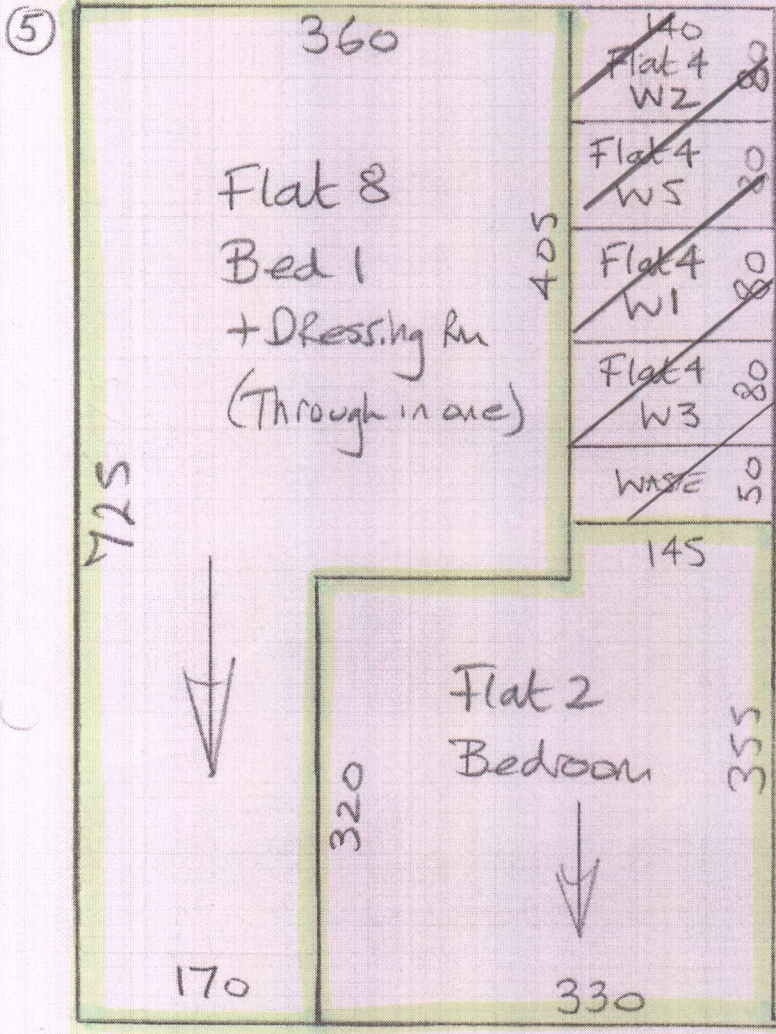
MARK up any CARPETS that are not required for PHASE 1 & STORE @ W/H for future fitting



P2910A  
TE Design & Build

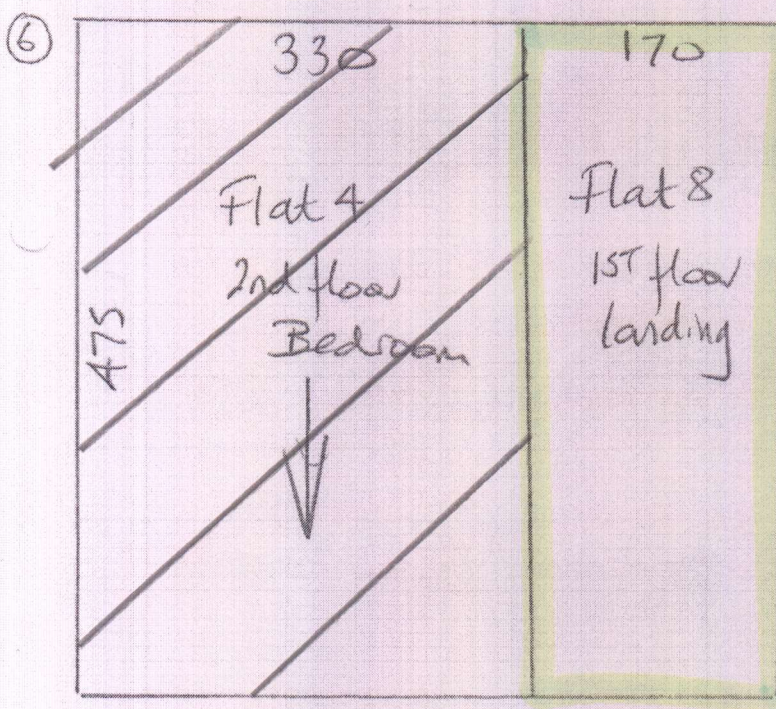
2 of 8



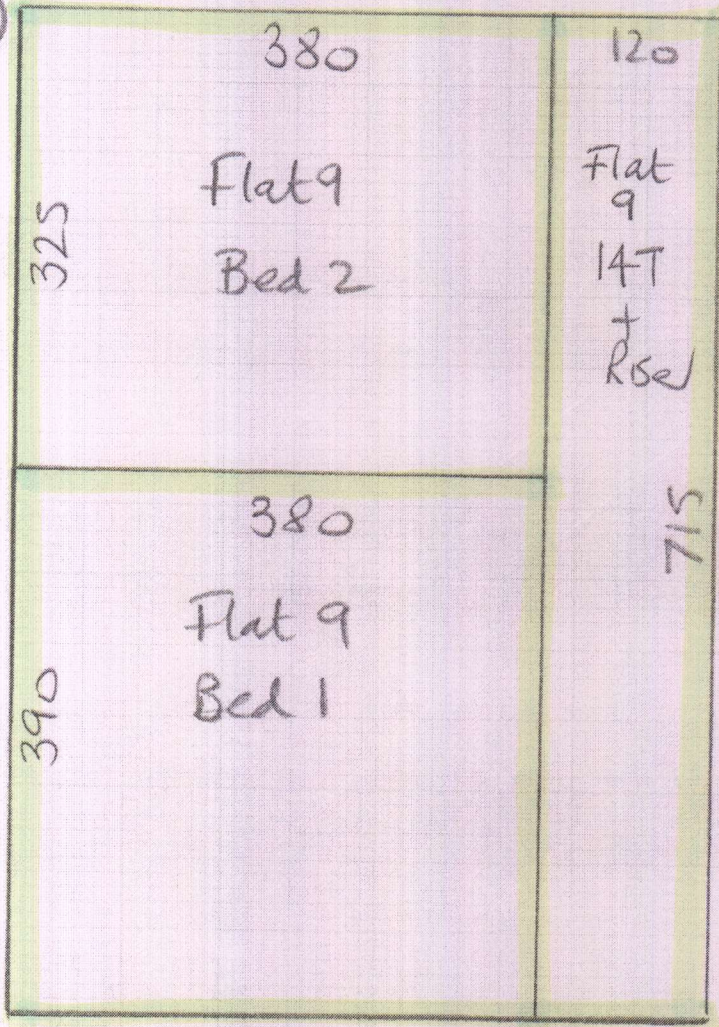


P29104  
TE Design & Build

3 of 8



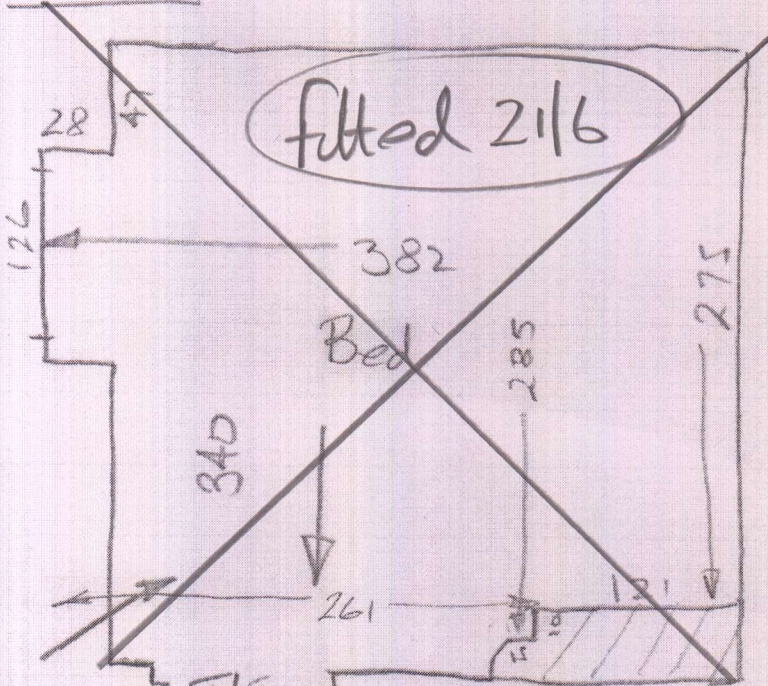
7



P2910A  
TE Design + Build

4 of 8

Flat 1



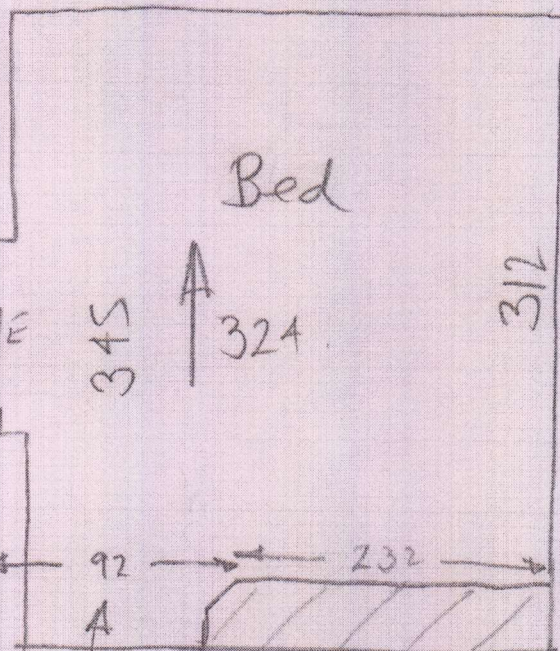
P29104  
TE Design  
Flats 1+2

5 of 8

Conc  
stick  
s/e

T/E  
11mm  
Laminate  
Hall

Flat 2



Ground floor

URGENT - Phase 1  
Flats 1, 3, 4 + 6

11mm  
Laminate  
T/E  
Hall

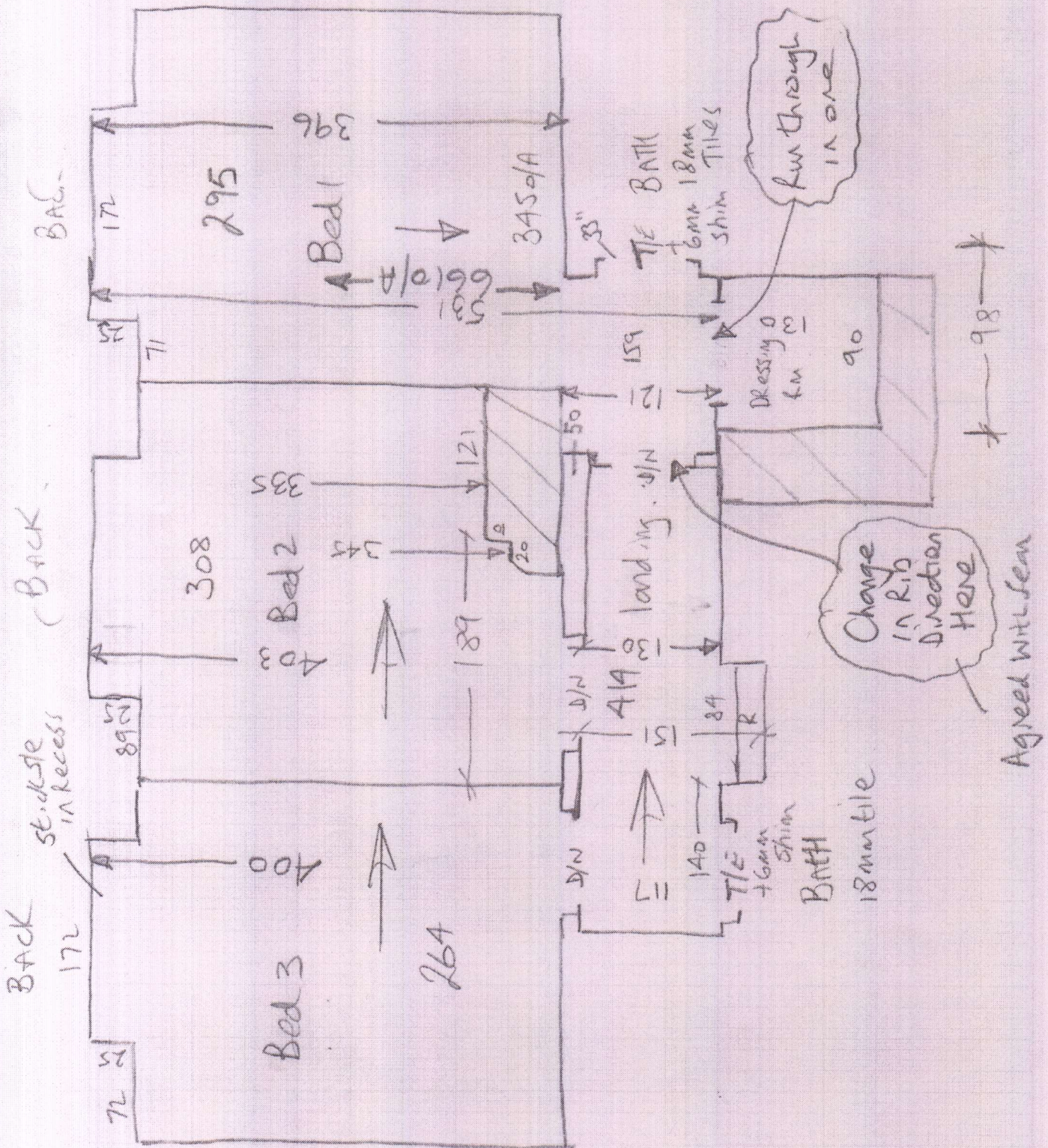
Conc stick s/e



P29104  
TE Design + Build  
Flat 8

(7 of 8)

1st floor



Grand floor

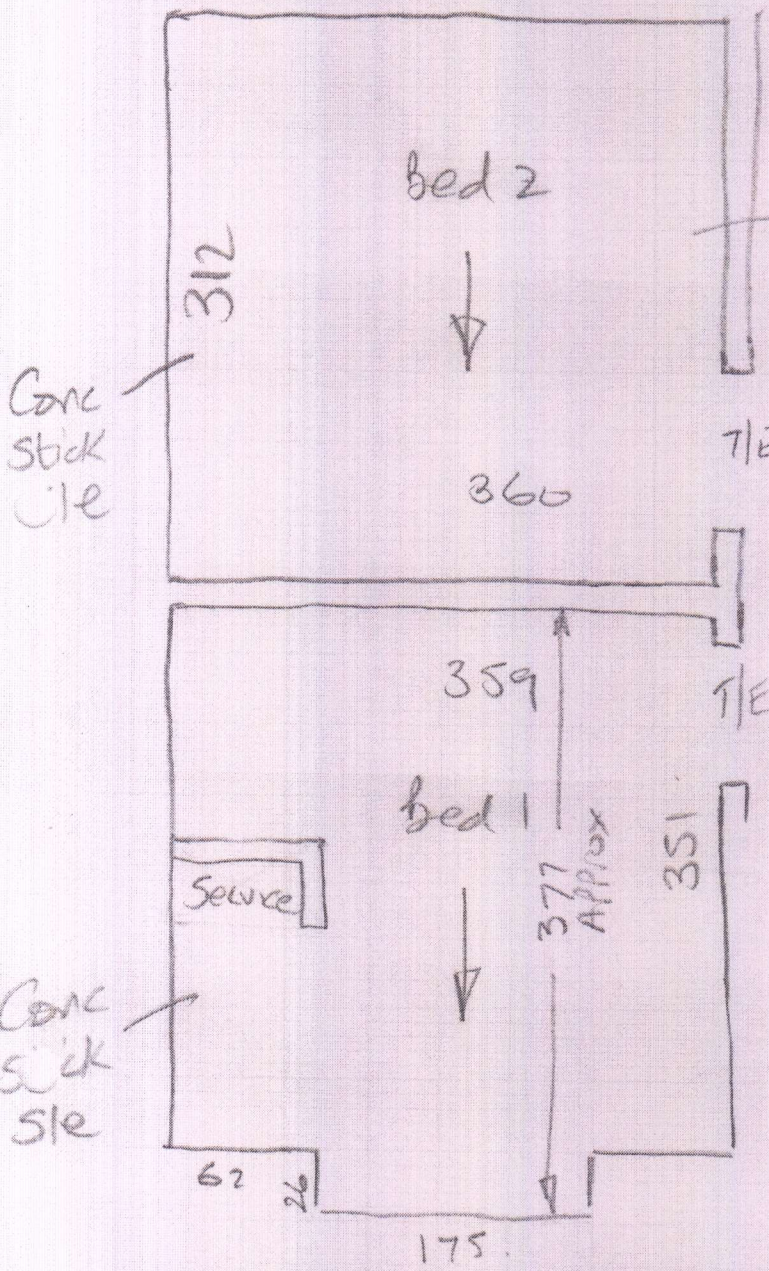
Front

P2910A  
VE Design + Build  
Flat 9

80x8

laminated  
Need 1 Trim

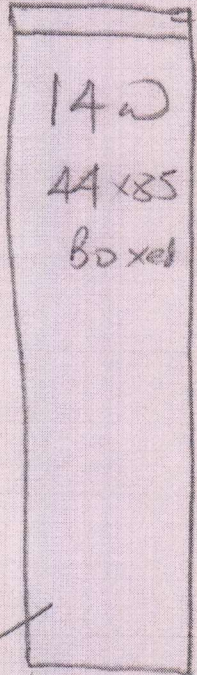
20x83



Concrete  
stick  
s/c

Conc  
stick  
s/c

Hall  
laminated  
trim  
(NOT  
IN  
yet)



Timber

Check Measure  
this flat.