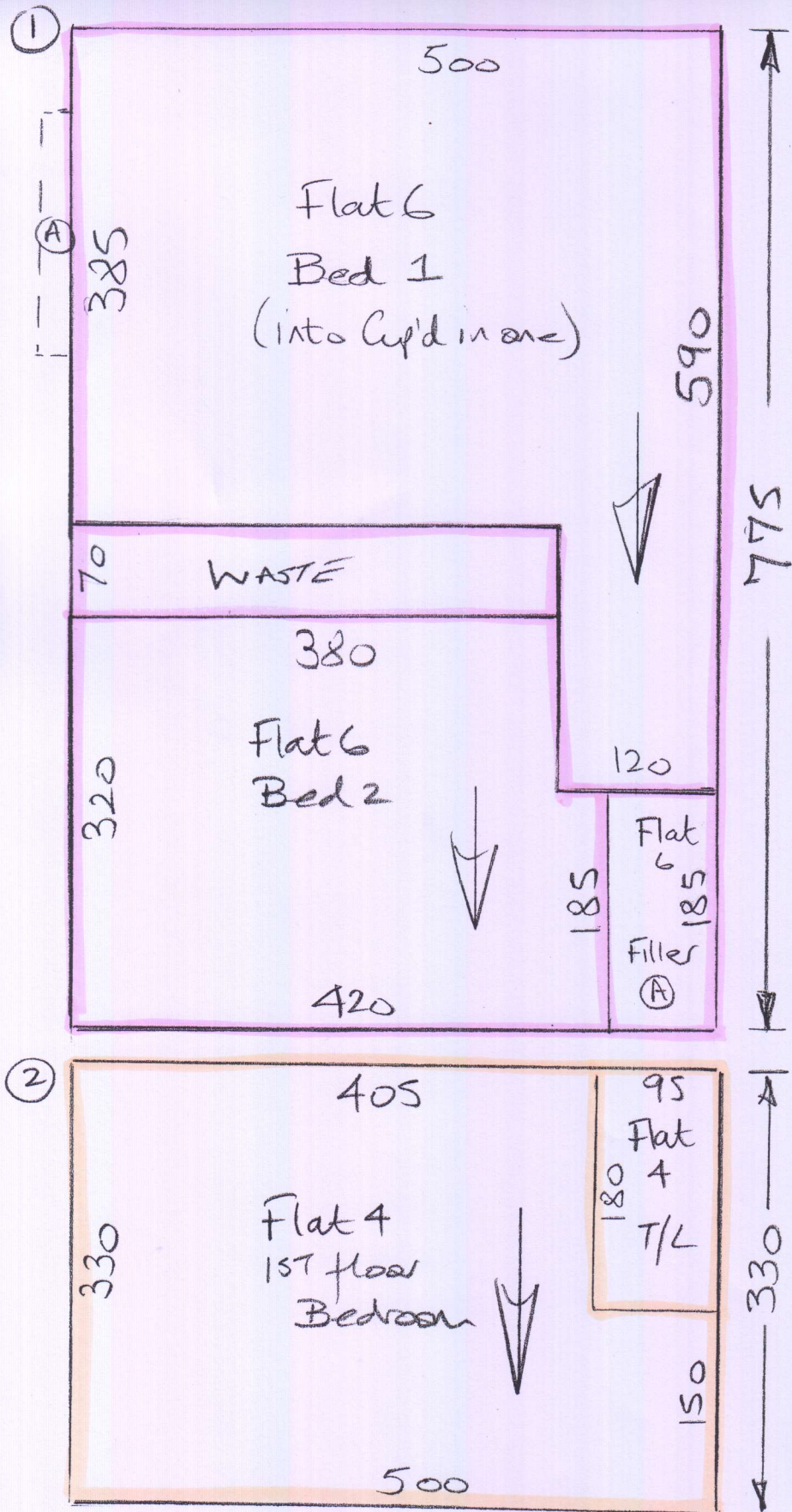


Phase 1 - 21/6

P29104
TE Design & Build

1 of 12

Arabica
Col Truffle



- Cut Plan ① 775 x 500
- Cut Plan ② 330 x 500
- Cut Plan ③ 640 x 500
- Cut Plan ④ 595 x 500
- Cut Plan ⑤ 725 x 500
- Cut Plan ⑥ 475 x 500
- Cut Plan ⑦ 715 x 500
- Flat 5 Bed 450 x 500
- Flat 7 Bed 450 x 500

$$51.55 \times 500 = \underline{\underline{257.75m^2}}$$

* Must floor on completion as they have viewings @ W/E

Phase 1

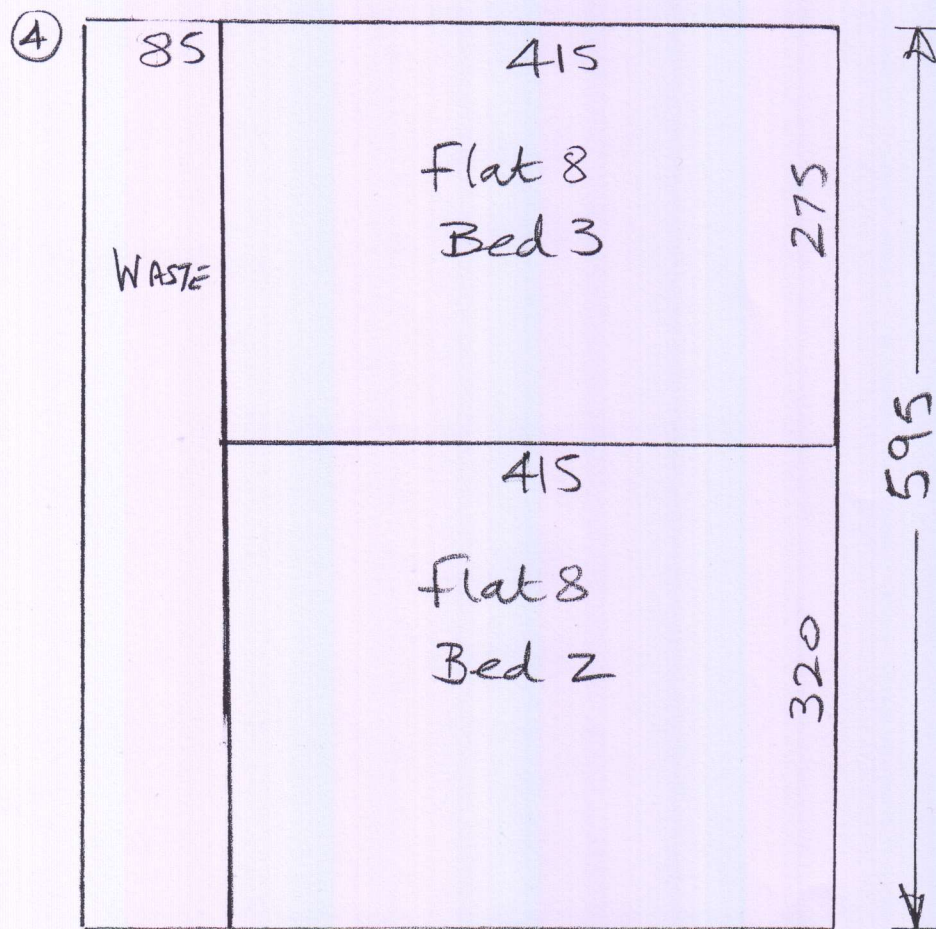
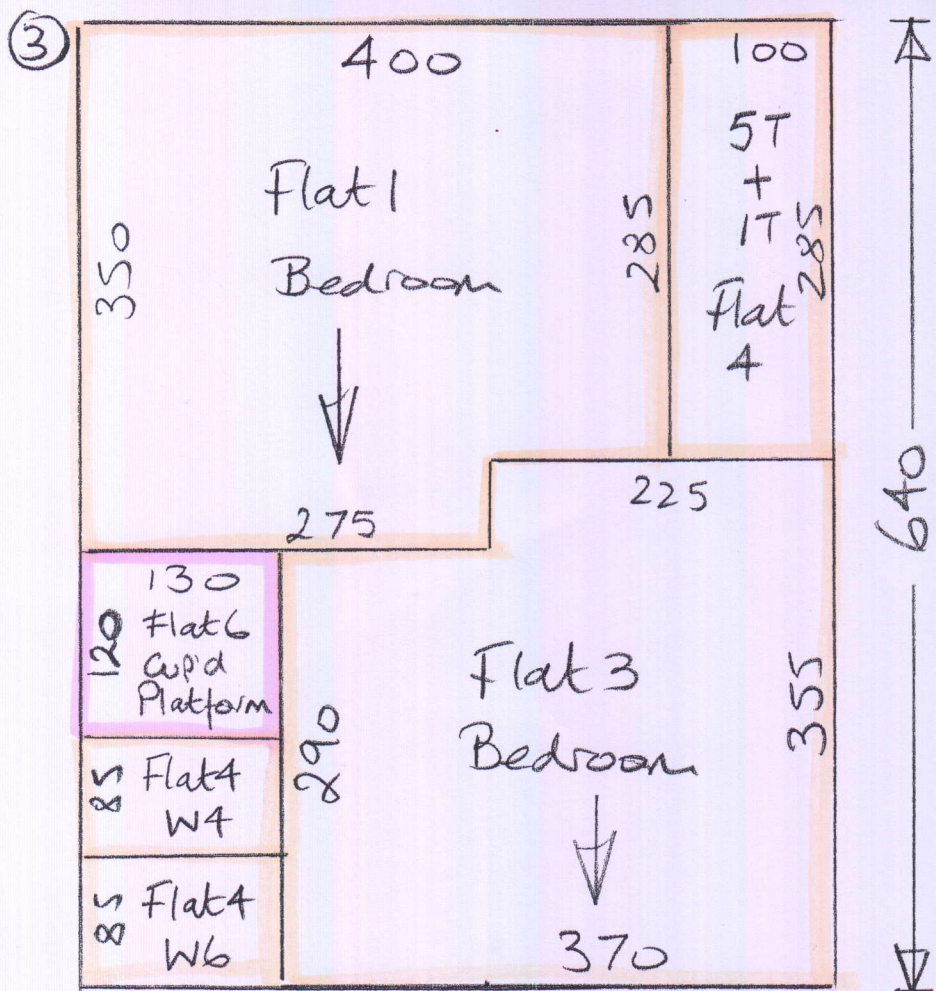
Billy - Fri 21/6 = Flats 1, 3 + 4

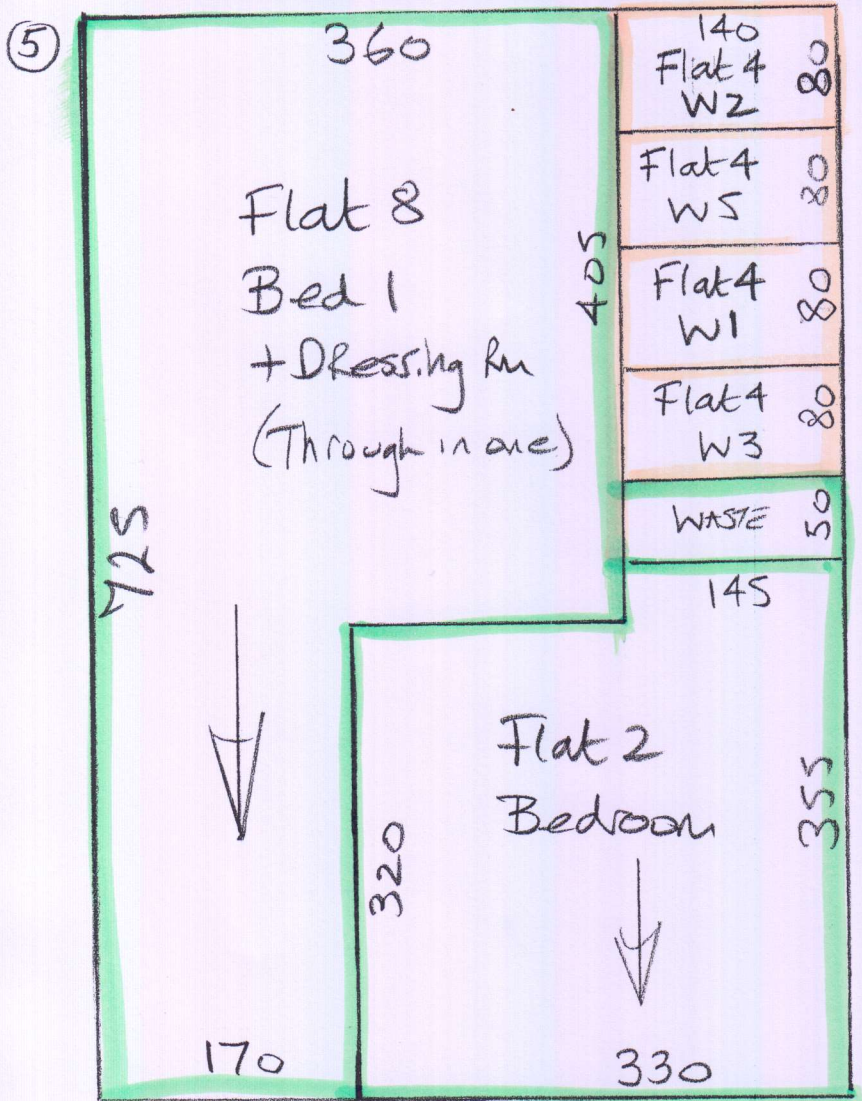
Martin - Fri 21/6 = Flat 6

MARK up any CARPETS that are not required for PHASE 1 & STONE @ W/E for future fitting

P2910A
TE Design & Build

2 of 12

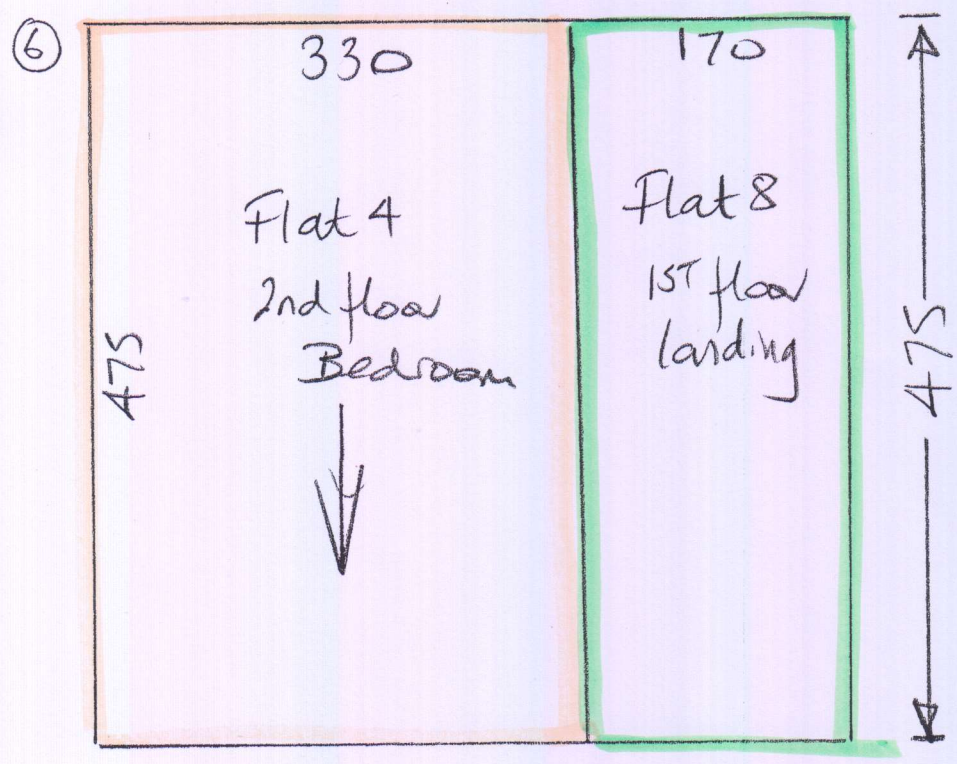




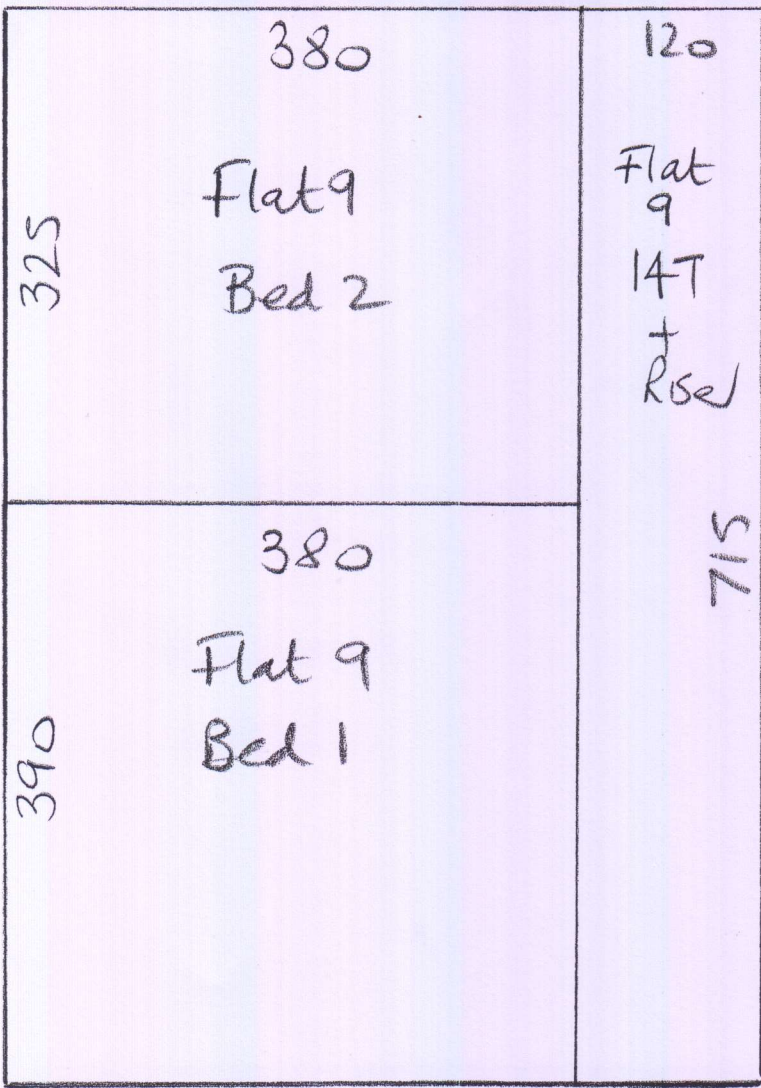
P29104
TE Design & Build

3 of 12

MARK up & store
w/ WIK for
future fitting



7



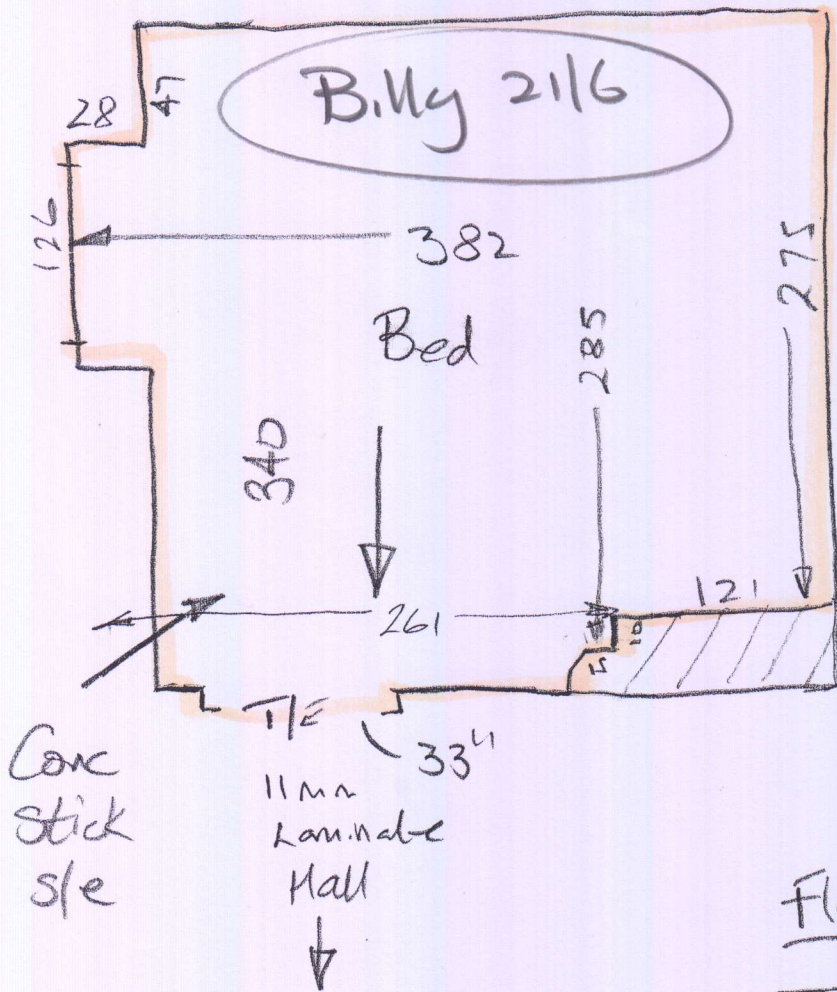
P2910A
TE Design + Build

4 of 12

Flat 1

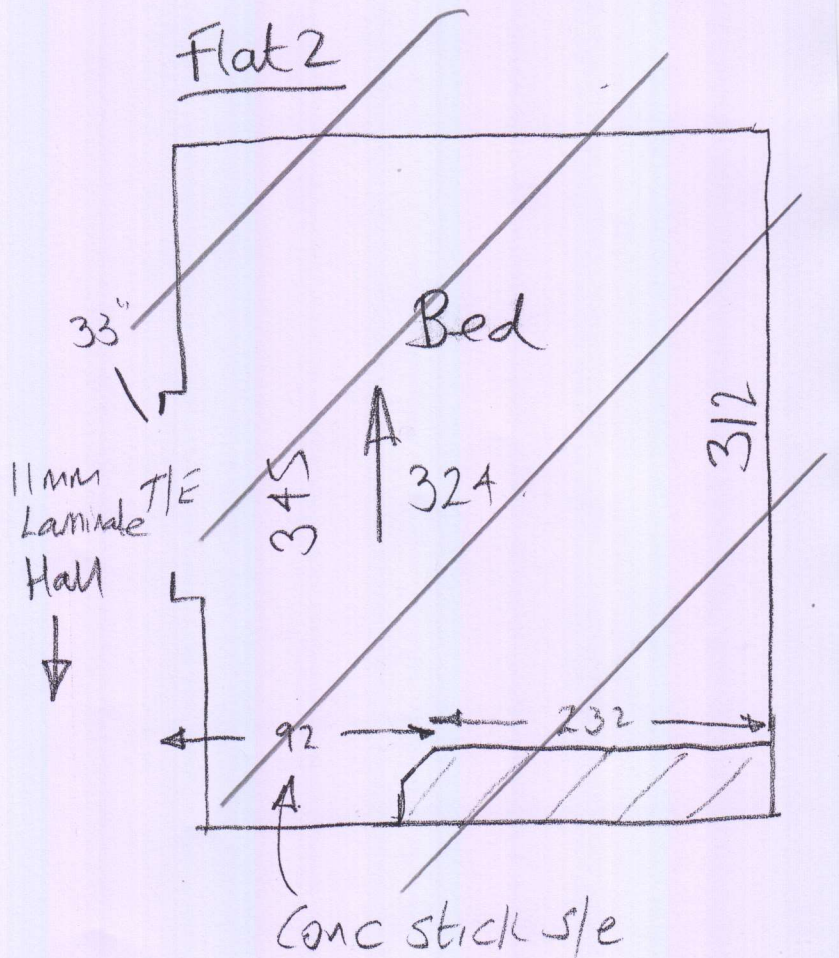
P29104
TE Design
Flats 1+2

5 of 12



Ground floor

Flat 2



URGENT - Phase 1

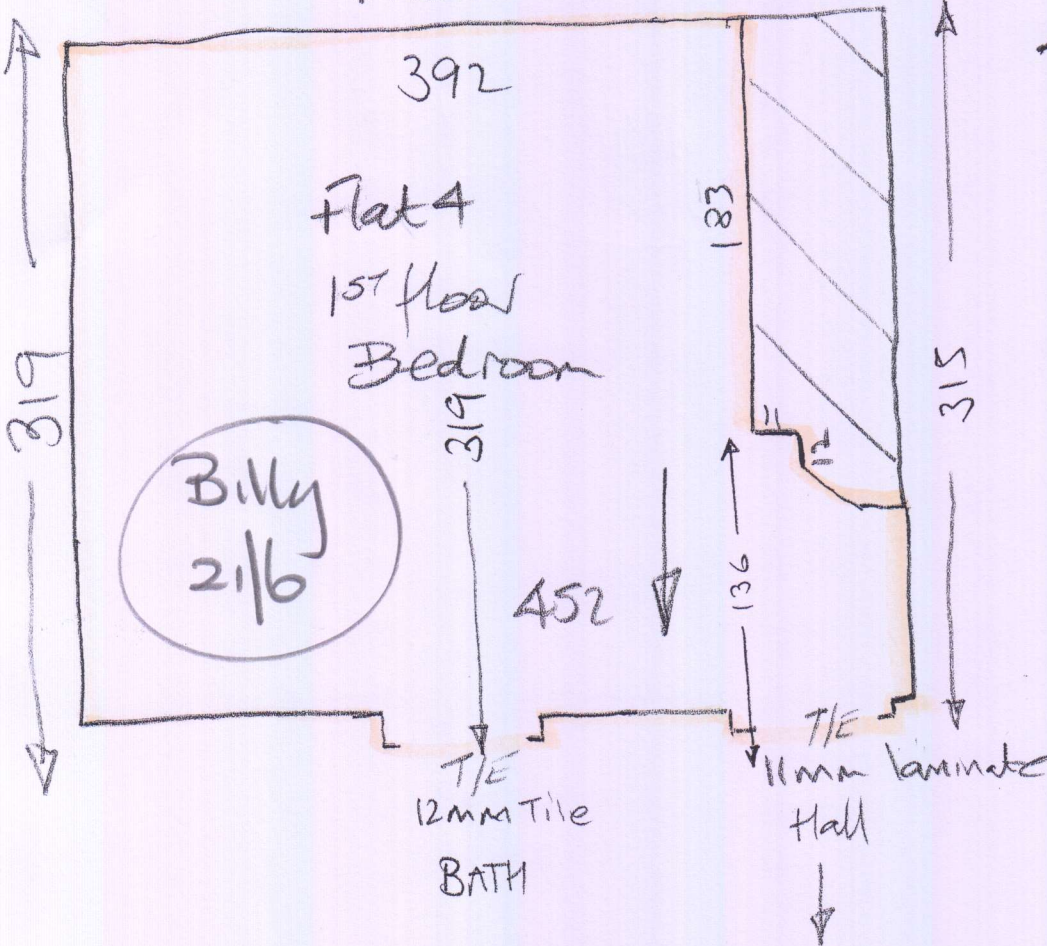
Flats 1, 3, 4 + 6

15th floor

FRONT

P29104
TE Design & Build
Flat 4

7 of 12

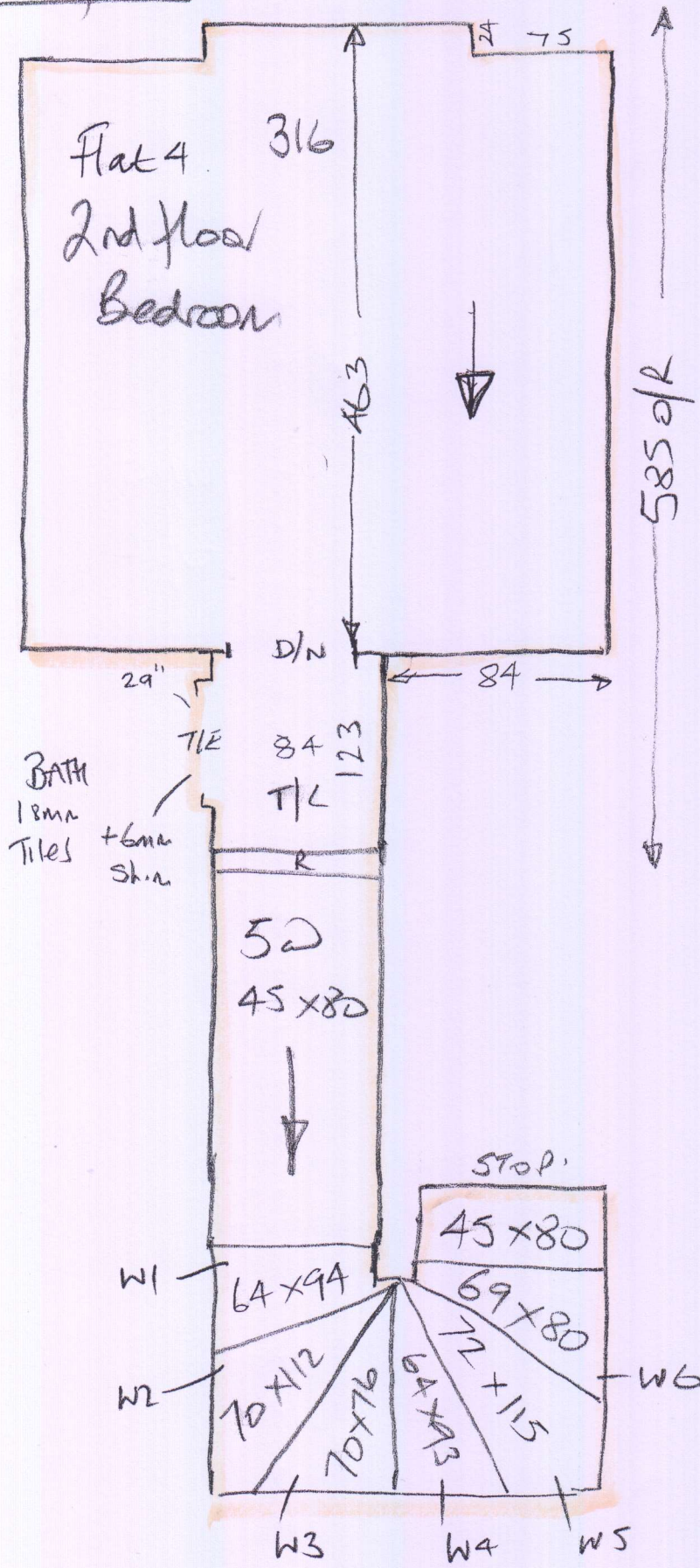


2nd floor

P29104
TE Design + Build
Flat 4

8 of 12

Billy
2/16

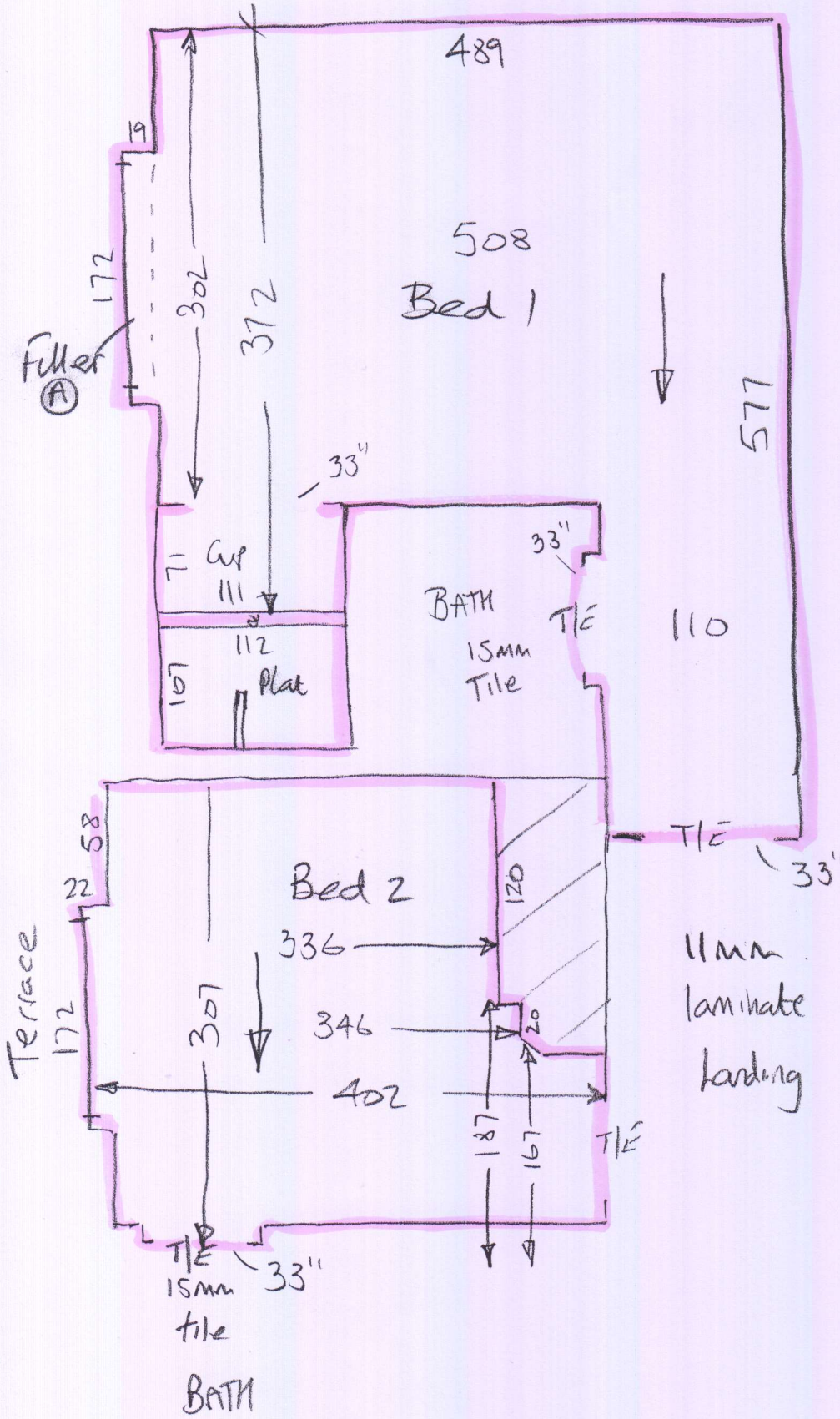


MALIN - 21/6

1st floor

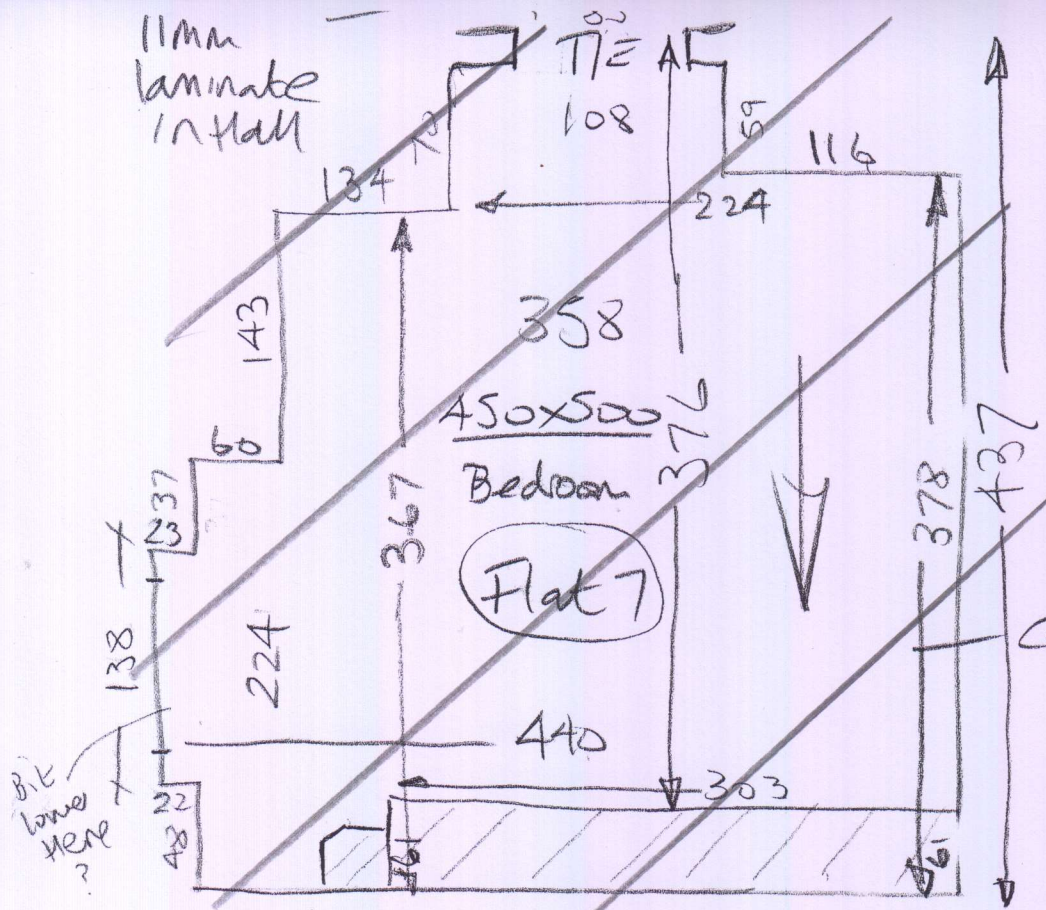
P29104
TE Design + Build
Flat 6

9 of 12

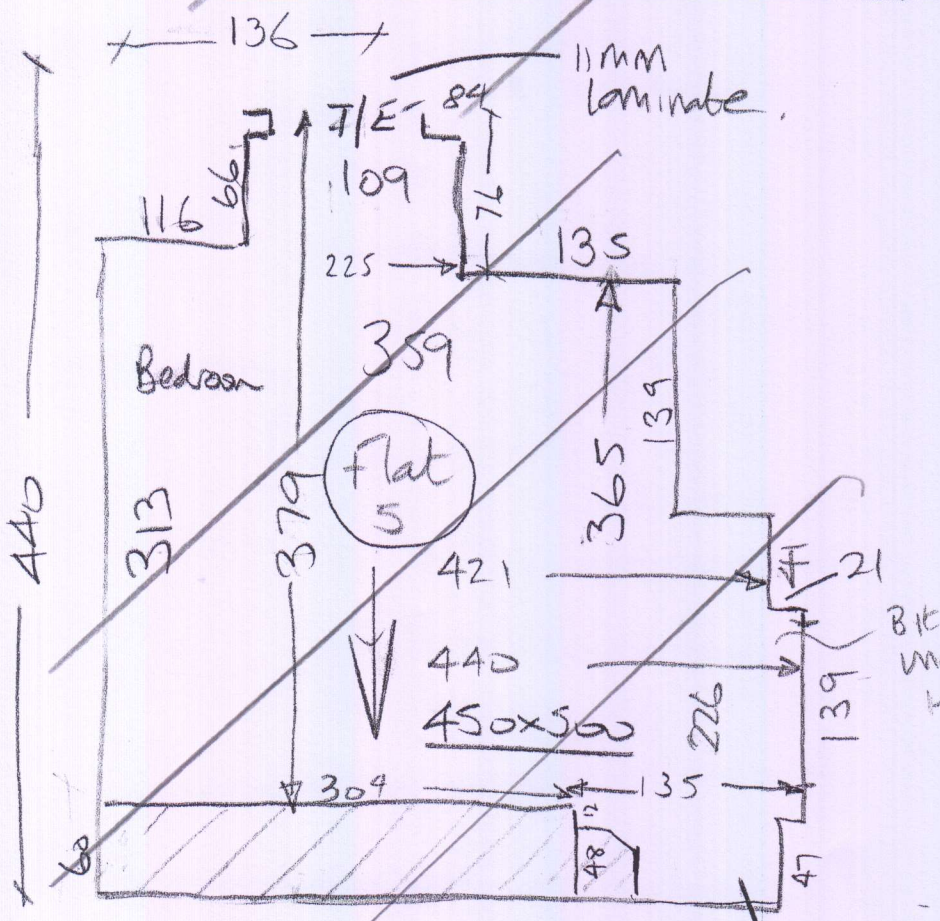


P29104
TE Design & Build

10 of 12



Conc floor - stick site

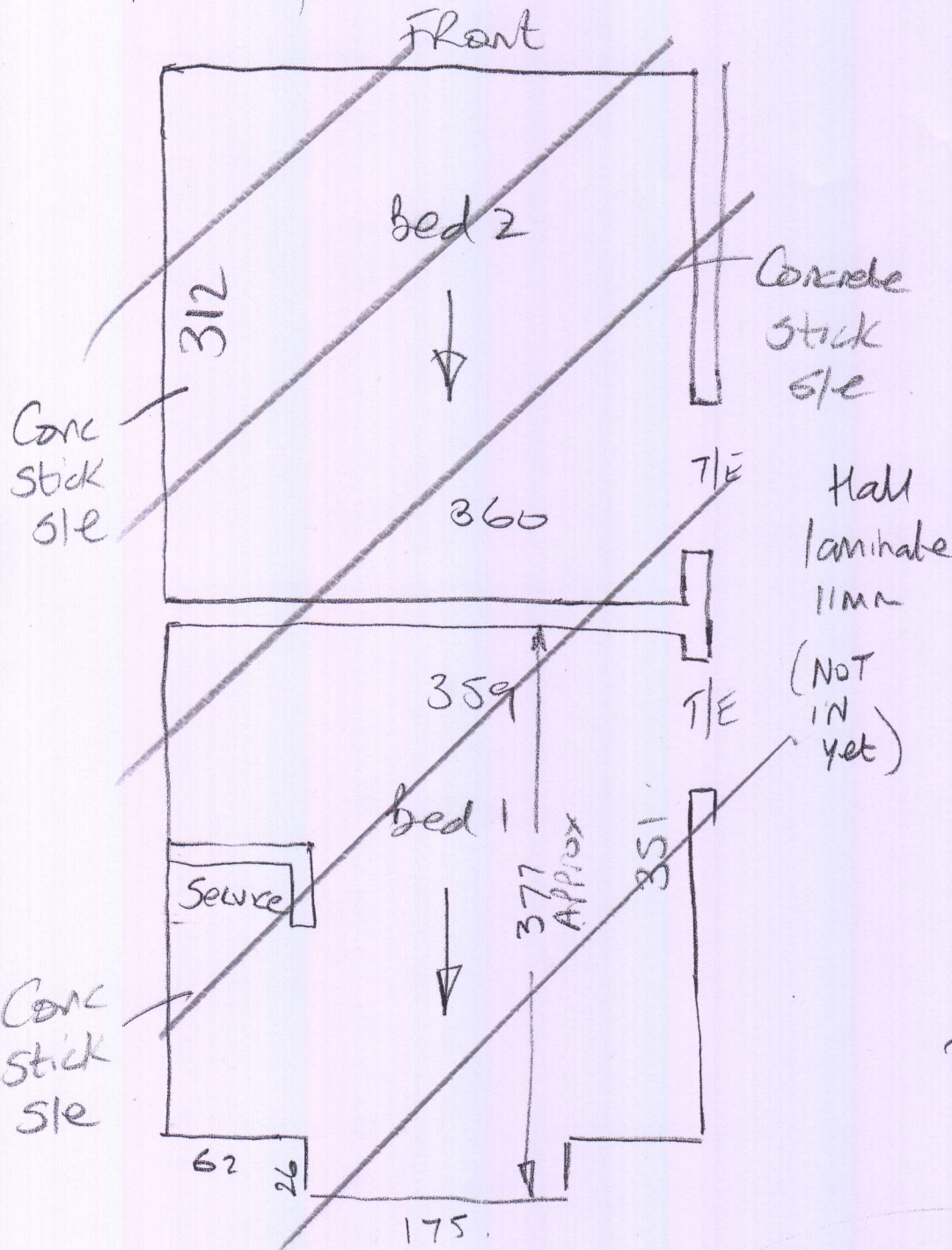


Stick site
Concrete floors

Conc floor - stick site

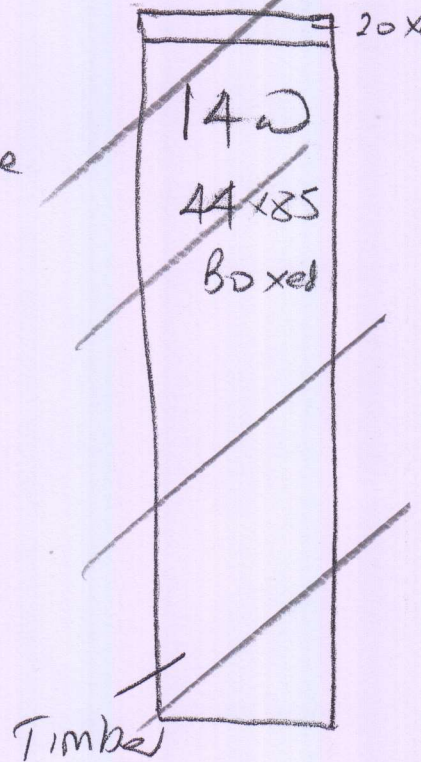
Grand floor

P29104
TE Design + Build.
Flat 9.



12 of 12

laminates needs trim 20x85



Check Measure this flat.