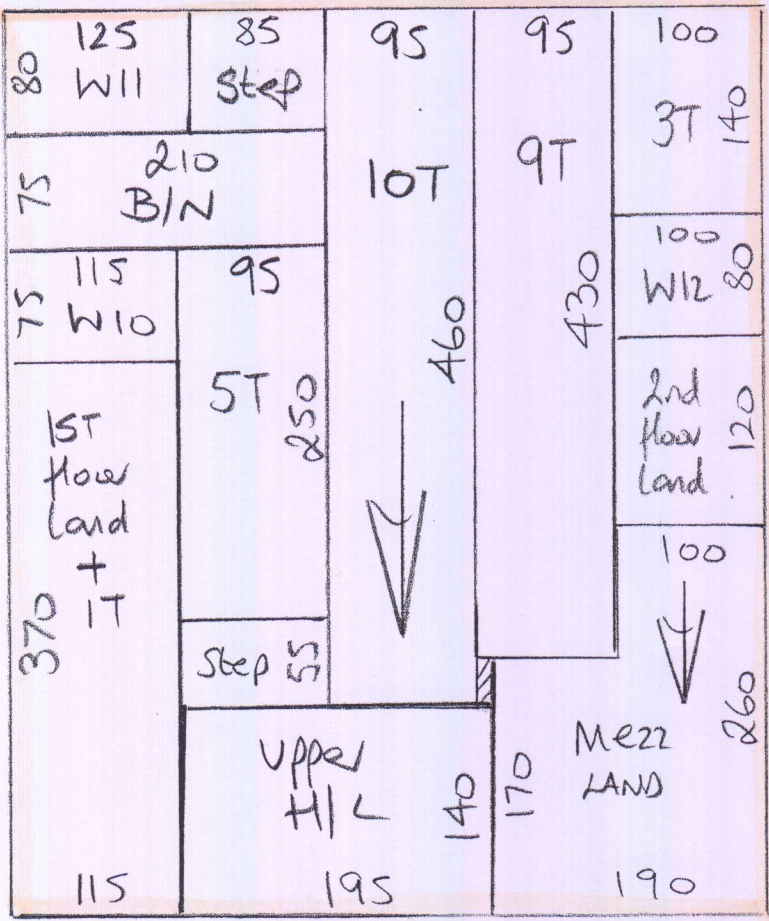


①



Phase 1 - 9/8
 Phase 2 - 28/8
 P29/47
 Poppins Nurseries
 165 New Kings Rd

① of 4

Ultima Major
Col. Bluebird

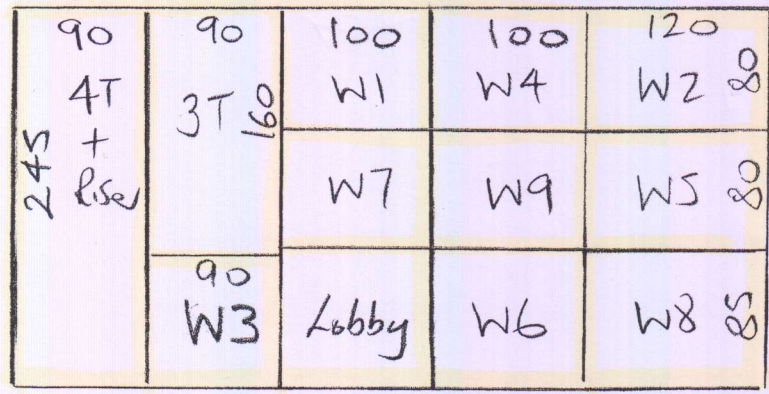
Cut plan ① 600x500

Cut plan ② 245x500

845x500

= 42.25m²

②



Coir Matting
Col. Natural

Interior Matwell 140x200
 Exterior Matwell 080x200

Phase 1 - 9/8 - Top staircase from 2nd floor up to office

Phase 2 - 28/8 - Remaining s/l + 2 Coir Mats

* Must finish on 28/8 as School re-opens on 29/8.

Top Strain (From 2nd Floor Landing to Office) P29147

EXISTING NOSING

Riser

10 x 75

AT

50 x 77

w1 65 x 92

w2 75 x 107

w3 65 x 73

BT

50 x 76

w4 70 x 90

w5 75 x 110

w6 75 x 87

w7 65 x 87

w8 80 x 110

w9 65 x 73

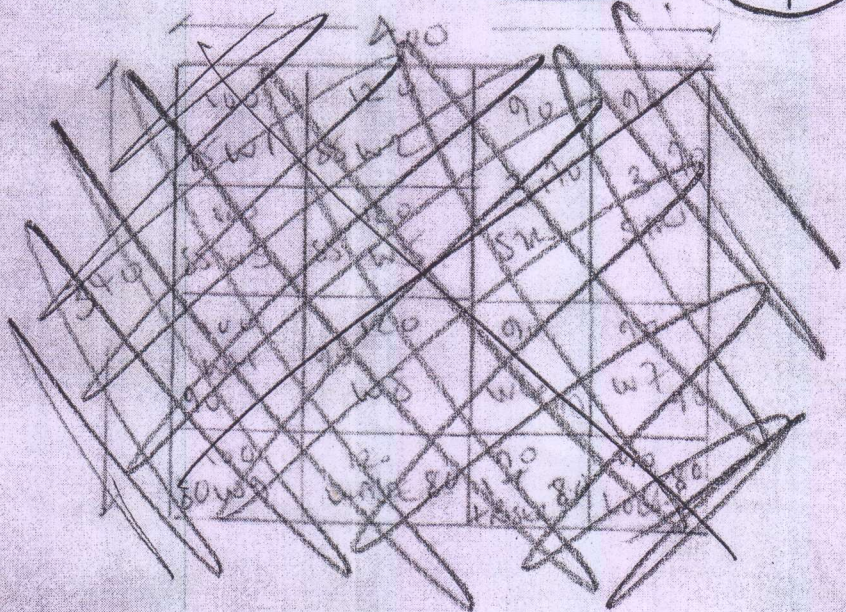
74

Libco 27

EXISTING
WOOD THRESHOLDS

~~XXXXXXXXXXXX~~
PAPERS NUMBERED
165 NEW KINGS
SW6 4SN

~~XXXXXXXXXXXX~~ (2 of 4)



ULTIMA MAJOL
COLLE BUCCHIO

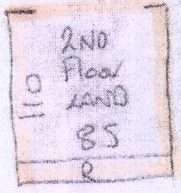
~~XXXXXXXXXXXX~~

See Jane Robertson on arrival
07976-952638

P29147

~~2/2~~
~~EX~~
~~2/2~~

~~2/2~~
~~EX~~
~~2/2~~



Poppin's Nurseries
165 New Kings Rd
Sw16



3 of 4

3a) 45x84 + Turn

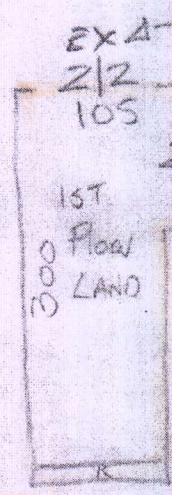
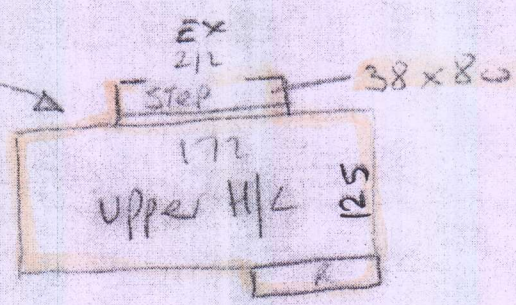
H/L 125x172 + step 38x80 (2/2)

9a) 45x85 + Turn

W10 65x100

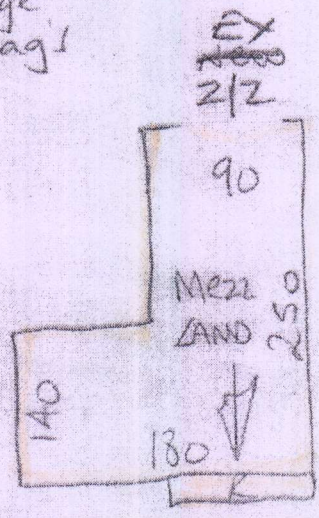
W11 70x115

W12 70x80



EX laminate T/Holds are broken Change to Chrome Zig Zag!

1a) 42x84 + Turn



14a) 45x83 + Turn

B/N 60x135

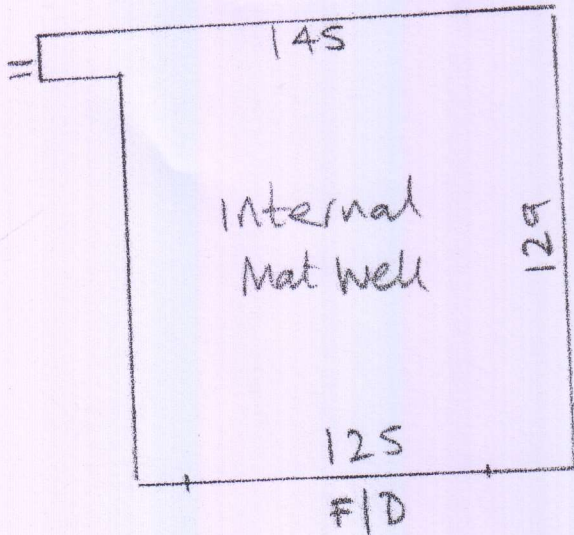
Coir Mats - NATURAL

P29147
~~XXXXXXXXXX~~

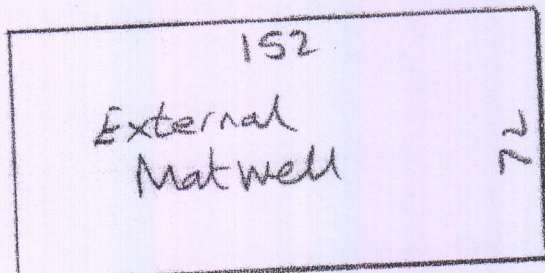
Popp. w Nurseries

~~XXXXXXXXXX~~ (4 of 4)

165 New Kings Road



= 140 x 200



= 80 x 200