

P29010
HdWE

1 of 4

Freedom Twist

Col. 460 HAZELNUT

Cut Plan ① 980x400

Cut Plan ② 1095x400

20.75x400

= 83m²

PHASE 1 - 13/9 - 1st Call

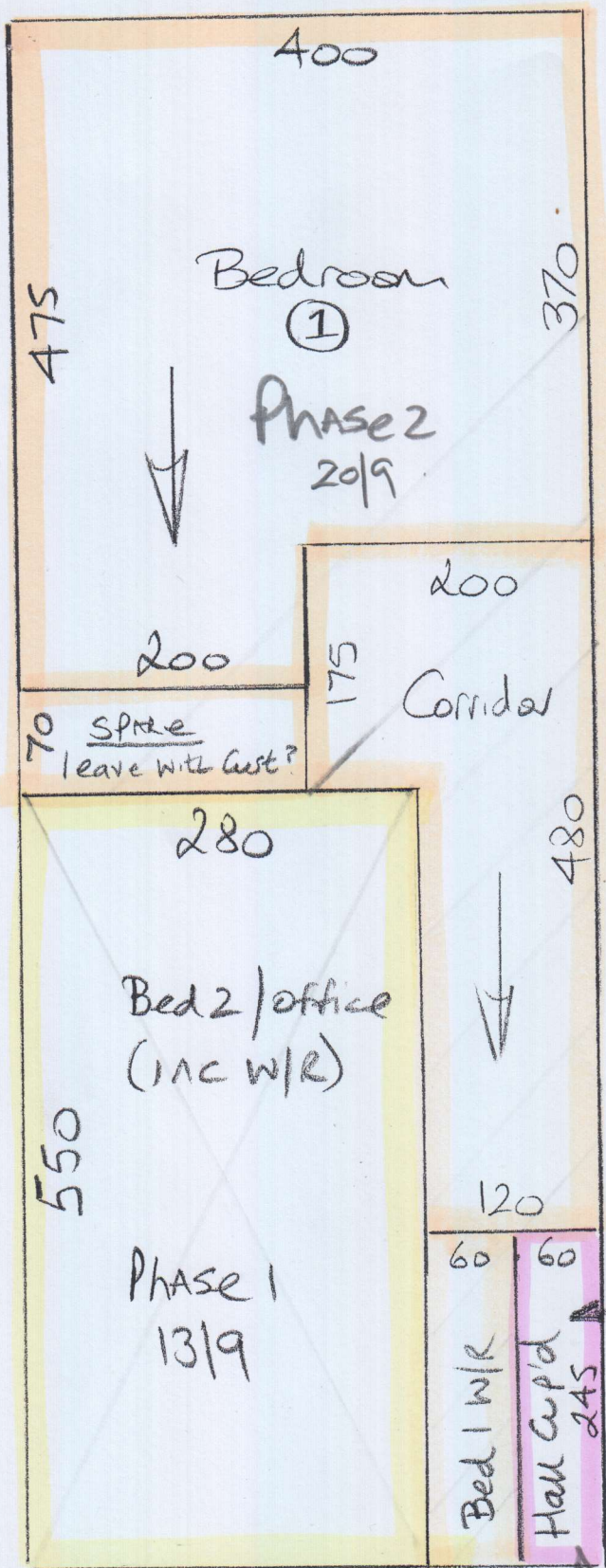
PHASE 2 - 20/9 - 3rd Call

PHASE 3 - 20/3 - 2nd Call

Access via Gary the decorator 07889-807808

* MUST Hoover flat & Common Parts on Completion.

②



P29010
HdWE

②44

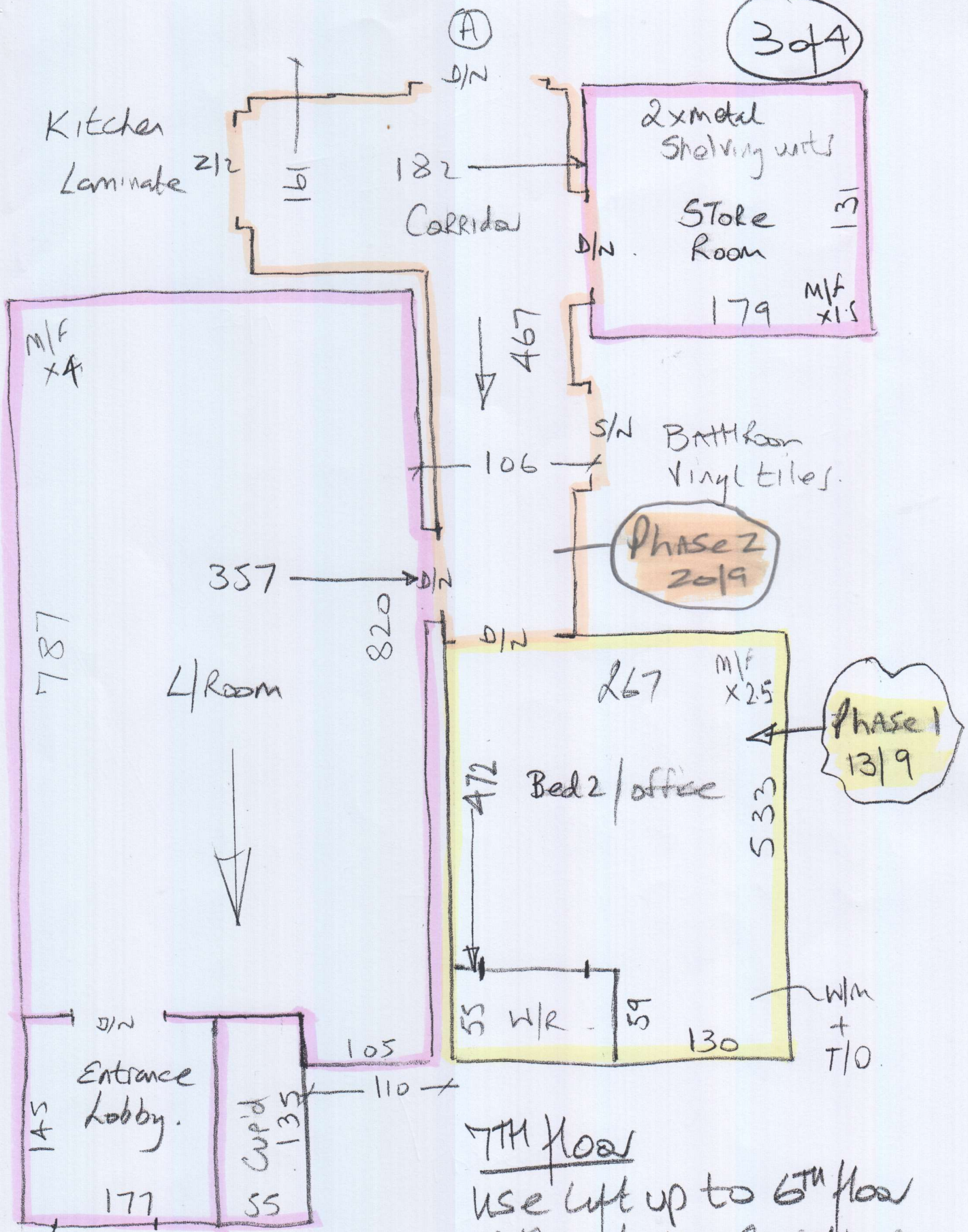
Phase 2 - 20/9

* MARK UP
 Remainder of
 Cut plan &
 Store w/WH
 for future
 fitting

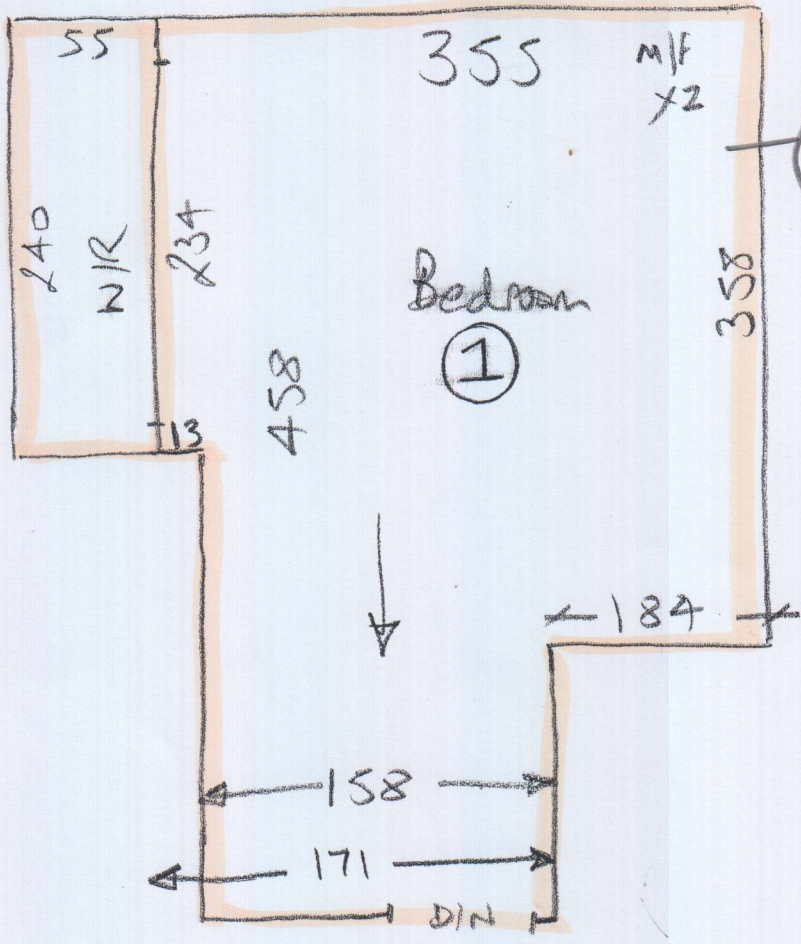
Phase 3
20/9

P29010-Hdwe

3 of 4



7TH floor
 Use lift up to 6TH floor
 & then take creeps up
 the stairs from there.



M/F
x2

Phase 2
2019

P29010
Hdwe

4 of 4

(A)